

# Always there to help you

Register your product and get support at  
[www.philips.com/welcome](http://www.philips.com/welcome)

AD295



## User manual

# PHILIPS



# Contents

---

<b>1</b>	<b>Important</b>	<b>1</b>
	Safety	1
	Notice	2

---

<b>2</b>	<b>Your docking speaker</b>	<b>3</b>
	Introduction	3
	What's in the box	3
	Overview	3

---

<b>3</b>	<b>Prepare</b>	<b>4</b>
	Connect power	4

---

<b>4</b>	<b>Play</b>	<b>4</b>
	Compatible iPod/iPhone models	4
	Adjust volume	4
	Adjust screen brightness	4
	Charge the iPod/iPhone	5
	Play from an external device	5

---

<b>5</b>	<b>Specifications</b>	<b>6</b>
	Amplifier	6
	General information	6

---

<b>6</b>	<b>Troubleshooting</b>	<b>6</b>
----------	------------------------	----------

# 1 Important

the disconnect device shall remain readily operable.

## Safety

Read and understand all instructions before you use this docking speaker. If damage is caused by failure to follow the instructions, the warranty does not apply.



This 'bolt of lightning' indicates uninsulated material within the device may cause an electrical shock. For the safety of everyone in your household, please do not remove the covering.

The 'exclamation mark' calls attention to features for which you should read the enclosed literature closely to prevent operating and maintenance problems.

**WARNING:** To reduce the risk of fire or electric shock, the device should not be exposed to rain or moisture and objects filled with liquids, such as vases, should not be placed on the device.

**CAUTION:** To prevent electric shock, fully insert the plug. (For regions with polarized plugs: To prevent electric shock, match wide blade to wide slot.)

- Only use attachments/accessories specified by the manufacturer.
- Use only power supplies listed in the user manual.
- The product shall not be exposed to dripping or splashing.
- Do not place any sources of danger on the product (e.g. liquid filled objects, lighted candles).
- Where the plug of the Direct Plug-in Adapter is used as the disconnect device,

## Warning

- Never remove the casing of this apparatus.
- Never lubricate any part of this apparatus.
- Never place this apparatus on other electrical equipment.
- Keep this apparatus away from direct sunlight, naked flames or heat.
- Ensure that you always have easy access to the power cord, plug or adaptor to disconnect the apparatus from the power.

## Notice

Any changes or modifications made to this device that are not expressly approved by Philips Consumer Lifestyle may void the user's authority to operate the equipment.

## Care of the environment

### Disposal of your old product and batteries

Your product is designed and manufactured with high quality materials and components, which can be recycled and reused. Never dispose of your product with other household waste. Please inform yourself about the local rules on the separate collection of electrical and electronic products and batteries. The correct disposal of these products helps prevent potentially negative consequences on the environment and human health. Please visit [www.recycle.philips.com](http://www.recycle.philips.com) for additional information on a recycling center in your area.

### Environmental information

All unnecessary packaging has been omitted. We have tried to make the packaging easy to separate into three materials: cardboard (box), polystyrene foam (buffer) and polyethylene (bags, protective foam sheet.)

Your system consists of materials which can be recycled and reused if disassembled by a specialized company. Please observe the local regulations regarding the disposal of packaging materials, exhausted batteries and old equipment.

---

## Trademark notice



"Made for iPod" and "Made for iPhone" mean that an electronic accessory has been designed to connect specifically to iPod or iPhone respectively, and has been certified by the developer to meet Apple performance standards. Apple is not responsible for the operation of this device or its compliance with safety and regulatory standards. Please note that the use of this accessory with iPod or iPhone may affect wireless performance. iPod and iPhone are trademarks of Apple Inc., registered in the U.S. and other countries.



### Note

- The type plate is located on the bottom of the product.

## 2 Your docking speaker

---

### Introduction

With this docking speaker, you can:

- enjoy music from your iPod/iPhone,
- charge your iPod/iPhone, and
- enjoy music from an external audio player.

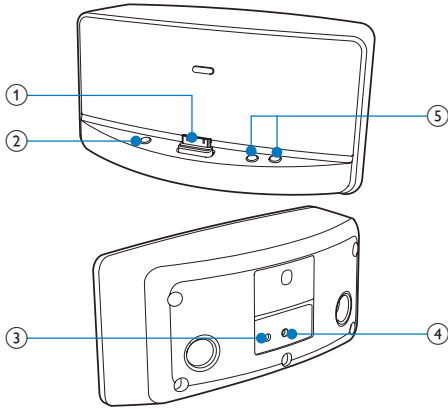
---

### What's in the box

Check and identify the contents of your package:

- Docking speaker
- AC power adapter
- Short user manual

## Overview



### ① Dock for iPod/iPhone

### ② ☼

- Adjust the screen brightness of docked iPod touch or iPhone.

### ③ Power socket

- Connect to the power adapter.

### ④ MP3 LINK

- Connect to an external audio player by MP3 link cable.

### ⑤ +/-

- Adjust volume.

## 3 Prepare

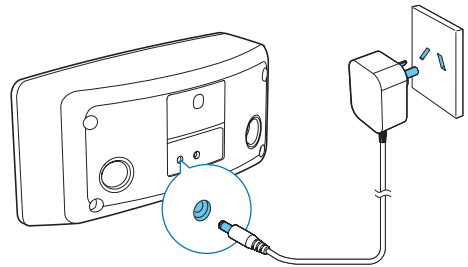
Always follow the instructions in this chapter in sequence.

### Connect power



#### Caution

- Risk of product damage! Make sure that the power supply voltage matches the voltage printed on the bottom of the unit.
- Risk of electric shock! When you unplug the AC power adapter, always pull the plug from the socket. Never pull the power cord.
- Before you connect the AC power adapter, make sure that you have completed all the other connections.



Connect the AC power adapter to

- the power socket on the back of the docking speaker, and
- the power supply.  
↳ The docking speaker is ready for use.

## 4 Play

### Compatible iPod/iPhone models

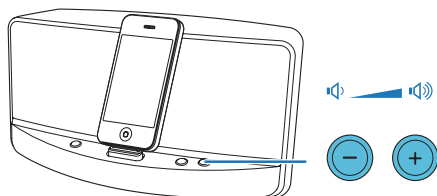
This docking speaker supports the following iPod and iPhone models.

- iPhone 4
- iPhone 3GS
- iPhone 3G
- iPhone
- iPod touch (1st, 2nd, 3rd, and 4th generations)
- iPod nano (1st, 2nd, 3rd, 4th, 5th, and 6th generations)
- iPod classic
- iPod with video
- iPod with color display
- iPod mini


## Adjust volume

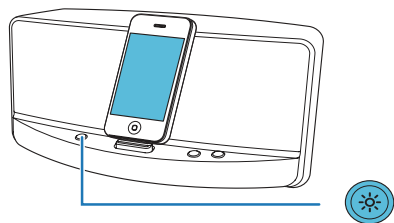
Press +/- repeatedly.

- +: Increase the volume
- -: Decrease the volume



## Adjust screen brightness

To adjust the screen brightness of your iPod touch or iPhone, press  repeatedly.



### Note

- This function is only available for iPod touch (1st, 2nd, 3rd, and 4th generations), iPhone, iPhone 3G, iPhone 3GS, and iPhone 4.

## Charge the iPod/iPhone

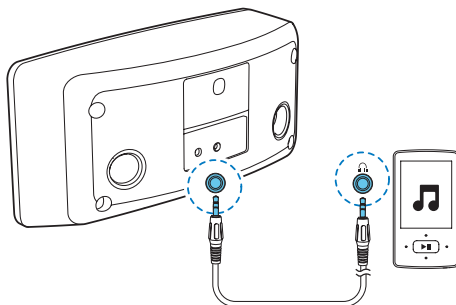
When this product is connected to power, the docked iPod/iPhone begins to charge.

## Play from an external device

You can also listen to an external audio player through this product.

### Note

- When an iPod/iPhone is docked and playing music, the docking speaker plays the audio input transferred through the dock. To play audio input that is transferred through the **AUX IN** socket, pause/stop the music play on the docked iPod/iPhone, or remove the iPod/iPhone.



- 1 Connect the MP3 link cable to
  - the **AUX IN** socket on the back panel of this product, and
  - the audio output socket (usually the headphone socket) of the external audio player.
- 2 Play the external audio player (refer to its user manual for details).

## 5 Specifications

### Note

- Specifications are subject to change without notice.

### Amplifier

Rated output power	2 X 2 W RMS
Signal-to-noise ratio	65 dB
AUX IN	0.6 V RMS 10 kohm

### General information

AC power adapter	Y12FE-050-2000S (Philips) Input: 100-240 V ~, 50/60Hz 0.35 A; Output: DC 5.0V --- 2 A
------------------	--

Operation power consumption	< 10 W
-----------------------------	--------

Standby power consumption	< 0.5 W
---------------------------	---------

Dimensions of main unit (W x H x D)	216 x 102 x 112 mm
-------------------------------------	--------------------

Weight of main unit	0.68 kg
---------------------	---------

## 6 Troubleshooting



### Warning

- Never remove the casing of this product.

To keep the warranty valid, never try to repair the product yourself.

If you encounter problems when using this product, check the following points before requesting service. If the problem remains unsolved, go to the Philips Web page ([www.philips.com/support](http://www.philips.com/support)). When you contact Philips, make sure that the product is nearby and the model number and serial number are available.

### No power

- Make sure that the AC power adaptor of this product is connected properly.
- Make sure that there is power at the AC outlet.

### No sound

- Adjust the volume.

### Docked iPod/iPhone can't be charged.

- Make sure that the iPod/iPhone is compatible with this product.
- Make sure that the iPod/iPhone is securely docked.
- Remove the protective case of your iPod/iPhone.
- Make sure that the power supply is available.



**Philips Electronics Australia Limited and Philips New Zealand Limited  
Warranty against Defects**

In this warranty:

**We or us** means Philips Electronics Australia Limited ACN 008 445 743 or Philips New Zealand Limited (Company Number 1723), and our contact details are set out at the end of this warranty;

**You** means the purchaser or the original end-user of the Goods;

**Supplier** means the authorised distributor or retailer of the Goods that sold you the Goods in Australia or New Zealand; and

**Goods** means the product or equipment which was accompanied by this warranty and purchased in Australia or New Zealand.

If you require assistance with the operation of the product, its features or specifications please call the Philips Consumer Care Centre on 1300 363 391 in Australia or 0800 658 224 in New Zealand.

**Australia:** Our Goods come with guarantees that cannot be excluded under the Australian Consumer Law. You are entitled to a replacement or refund for a major failure and for compensation for any other reasonably foreseeable loss or damage. You are also entitled to have the Goods repaired or replaced if the goods fail to be of acceptable quality and the failure does not amount to a major failure. This is not a complete statement of your legal rights as a consumer.

**New Zealand:** Our Goods come with guarantees that cannot be excluded under the Consumer Guarantees Act 1993. This guarantee applies in addition to the conditions and guarantees implied by that legislation.

**Additional Warranty:**

In addition to the rights and remedies that you have under the Australian Consumer Law, Consumer Guarantees Act of New Zealand or any other applicable law, we provide the following warranty against defects:

1. If, during the first 12 months from their date of purchase from the Supplier (**Warranty Period**), the Goods prove defective by reason of improper workmanship or materials and none of your statutory rights or remedies apply, we will repair or replace the Goods without charge.
2. We do not have to repair or replace the Goods under this Additional Warranty if the Goods have been used for a commercial purpose; misused, improperly or inappropriately installed, operated or repaired; abused; damaged; or not maintained in accordance with the manufacturer's instructions.
3. Even when we do not have to repair or replace the Goods, we may decide to do so anyway. In some cases, we may decide to substitute the Goods with a similar alternative product of our choosing. All such decisions are at our absolute discretion.
4. All such repaired, replaced or substituted Goods continue to receive the benefit of this Additional Warranty for the time remaining on the original Warranty Period.
5. This Additional Warranty is limited to repair, replacement or substitution only. As far as the law permits, we will not be liable for any loss or damage caused to property or persons arising from any cause whatsoever.
6. In order to claim under this Additional Warranty you must telephone us on 1300 363 391 in Australia or 0800 658 224 in New Zealand within the Warranty Period. You will be asked for details of the Goods, a description of the defect and your personal details. Upon accepting your claim, we shall assist you with either returning the Goods to the Supplier for replacement or to the most convenient Philips Authorised Service Centre for your Goods to be repaired. In some case we may require that you return to the Goods to us (at the address below) for repair, replacement or substitution.
  - \* All returned Goods must be accompanied by satisfactory proof of purchase which clearly indicates the name and address of the Supplier, the date and place of purchase and identifies product. It is best to provide a legible and unmodified receipt or sales invoice.
  - \* You must bear any expense for return of the Goods or otherwise associated with making your claim under this Additional Warranty.
7. This warranty is only valid and enforceable in Australia and New Zealand.

Contact us or the place of purchase for further details.

Philips Electronics Australia Limited  
Level 1, 65 Epping Rd,  
North Ryde, SYDNEY NSW 2113  
**Consumer Care:** 1300 363 391  
**E-mail:** [pceinfo.australia@philips.com](mailto:pceinfo.australia@philips.com)  
**Website:** [www.philips.com/support](http://www.philips.com/support)

Philips New Zealand Limited  
Level 2, 1 Nugent St,  
Grafton, AUCKLAND, 1023  
**Consumer Care:** 0800 658 224  
**Email:** [pceinfo.australia@philips.com](mailto:pceinfo.australia@philips.com)  
**Website:** [www.philips.com/support](http://www.philips.com/support)



Specifications are subject to change without notice  
© 2013 Koninklijke Philips Electronics N.V.  
All rights reserved.

AD295\_79\_UM\_V1.0

