

Register your product and get support at
www.philips.com/welcome

HTS5131



EN User manual

HI उपयोगकर्ता पुस्तिका

PHILIPS

Contents

1 Help and support	4	7 Change settings	26
Tutorials	4	Picture	26
FAQs	4	Sound	26
Contact Philips	4	Language	27
		Parental control	27
		Energy saving	28
		Apply factory settings	28
2 Notice	4	8 Wall mount and stand	29
Copyright	4	Wall mount	29
Compliance	4	Stand for home theater and TV - STS1100/STS1300	29
Mains fuse	4		
Open source software	5	9 Update software	30
Trademarks	5	Check software version	30
		Update software through the Internet	30
3 Important	6	Update software through USB	30
Safety	6		
Care for your product	7	10 Product specifications	31
Care of the environment	7		
		11 Troubleshooting	34
4 Your home theater	8		
Main unit	8	12 Language code	37
Remote control	8		
		13 Index	38
5 Connect your home theater	10		
Subwoofer	10		
Connectors	10		
Connect to TV	11		
Connect audio from TV and other devices	13		
Internet	14		
6 Use your home theater	16		
Choose sound	16		
Discs	17		
USB storage devices	19		
DivX	20		
Audio, video, and picture options	20		
Radio	22		
MP3 player	23		
iPod or iPhone	23		
YouTube videos	23		
Picasa Web Albums	24		
EasyLink	25		

1 Help and support

Watch video tutorials, download a software update, and find answers to many frequently answered questions (FAQs) on your product at www.philips.com.

Tutorials

To set up your home theater and get additional information, refer to the video tutorials at www.philips.com/support.

FAQs

If you have a problem, refer to the frequently asked questions (FAQs) for this home theater at www.philips.com/support.

If you still need help, contact Philips Consumer Care in your country.



Warning

- Do not attempt to repair your home theater yourself. This may cause severe injury, irreparable damage to your home theater, or void your warranty.

Contact Philips

If you contact Philips, you will be asked for the model and serial number of your product. The model number and serial number are on the back or bottom of your product. Note the numbers before you call Philips:

Model No. _____

Serial No. _____

2 Notice

This section contains the legal and trademark notices.

Copyright



**Be responsible
Respect copyrights**

This item incorporates copy protection technology that is protected by U.S. patents and other intellectual property rights of Rovi Corporation. Reverse engineering and disassembly are prohibited.

Copyright in the UK

Recording and playback of material may require consent. See Copyright Act 1956 and The Performers Protection Acts 1958 to 1972.

Compliance



This product is in compliance with the essential requirements and other relevant provisions of Directives 2006/95/EC (Low Voltage), 2004/108/EC (EMC).

Mains fuse

This information applies only to products with a UK mains plug.

This product is fitted with an approved molded plug. If you replace the fuse, use one with:

- the ratings shown on the plug,
- a BS 1362 approval, and
- the ASTA approval mark.

Contact your dealer if you are not sure about what type of fuse to use.

Caution: To conform with the EMC directive (2004/108/EC), do not detach the plug from the power cord.

Open source software

Philips Electronics Singapore Pte Ltd hereby offers to deliver, upon request, a copy of the complete corresponding source code for the copyrighted open source software packages used in this product for which such offer is requested by the respective licenses. This offer is valid up to three years after product purchase to anyone in receipt of this information. To obtain source code, please contact open.source@philips.com. If you prefer not to use email or if you do not receive confirmation receipt within a week after mailing to this email address, please write to "Open Source Team, Philips Intellectual Property & Standards, P.O. Box 220, 5600 AE Eindhoven, The Netherlands". If you do not receive timely confirmation of your letter, please email to the email address above. The texts of the licenses and acknowledgements for open source software used in this product are included on a separate leaflet.



Java and all other Java trademarks and logos are trademarks or registered trademarks of Sun Microsystems, Inc. in the United States and/or other countries.



Manufactured under license under U.S. Patent #'s: 5,451,942; 5,956,674; 5,974,380; 5,978,762; 6,226,616; 6,487,535; 7,392,195; 7,272,567; 7,333,929; 7,212,872 & other U.S. and worldwide patents issued & pending. DTS and the Symbol are registered trademarks, & DTS-HD, and DTS-HD Master Audio | Essential and the DTS logos are trademarks of DTS, Inc. Product includes software. © DTS, Inc. All Rights Reserved.



Manufactured under license from Dolby Laboratories. Dolby and the double-D symbol are trademarks of Dolby Laboratories.



DivX®, DivX Certified®, DivX Plus™ HD and associated logos are trademarks of DivX, Inc. and are used under license.

ABOUT DIVX VIDEO: DivX® is a digital video format created by DivX, Inc. This is an official DivX Certified® device that plays DivX video. Visit divx.com for more information and software tools to convert your files into DivX video.

ABOUT DIVX VIDEO-ON-DEMAND: This DivX Certified® device must be registered in order to play purchased DivX Video-on-Demand (VOD) movies. To obtain your registration code, locate the DivX VOD section in your device setup menu. Go to vod.divx.com for more information on how to complete your registration.

Trademarks



"Blu-ray Disc", "Blu-ray" and "Blu-ray Disc" logo are trademarks of Blu-ray Disc Association.



'DVD Video' is a trademark of DVD Format/Licensing Corporation.



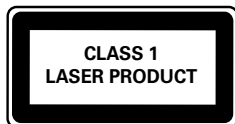
BONUSVIEW™

'BD LIVE' and 'BONUSVIEW' are trademarks of Blu-ray Disc Association.

x.v.Colour

'x.v.Colour' is a trademark of Sony Corporation.

HDMI, the HDMI logo, and High-Definition Multimedia Interface are trademarks or registered trademarks of HDMI licensing LLC in the United States and other countries.



3 Important

Read and understand all instructions before you use your home theater. If damage is caused by failure to follow instructions, the warranty does not apply.

Safety

Risk of electric shock or fire!

- Never expose the product and accessories to rain or water. Never place liquid containers, such as vases, near the product. If liquids are spilt on or into the product, disconnect it from the power outlet immediately. Contact Philips Consumer Care to have the product checked before use.
- Never place the product and accessories near naked flames or other heat sources, including direct sunlight.
- Never insert objects into the ventilation slots or other openings on the product.
- Where the mains plug or an appliance coupler is used as the disconnect device, the disconnect device shall remain readily operable.
- Disconnect the product from the power outlet before lightning storms.
- When you disconnect the power cord, always pull the plug, never the cable.

Risk of short circuit or fire!

- Before you connect the product to the power outlet, ensure that the power voltage matches the value printed on the back or bottom of the product. Never connect the product to the power outlet if the voltage is different.

Risk of injury or damage to the home theater!

- For wall-mountable products, use only the supplied wall mount bracket. Secure the wall mount to a wall that can support the combined weight of the product and the wall mount. Koninklijke Philips Electronics N.V. bears no responsibility for improper wall mounting that results in accident, injury or damage.
- For speakers with stands, use only the supplied stands. Secure the stands to the speakers tightly. Place the assembled stands on flat, level surfaces that can support the combined weight of the speaker and stand.

- Never place the product or any objects on power cords or on other electrical equipment.
- If the product is transported in temperatures below 5°C, unpack the product and wait until its temperature matches room temperature before connecting it to the power outlet.
- Visible and invisible laser radiation when open. Avoid exposure to beam.
- Do not touch the disc optical lens inside the disc compartment.
- Parts of this product can be made of glass. Handle with care to avoid injury and damage.

Risk of overheating!

- Never install this product in a confined space. Always leave a space of at least four inches around the product for ventilation. Ensure curtains or other objects never cover the ventilation slots on the product.

Risk of contamination!

- Do not mix batteries (old and new or carbon and alkaline, etc.).
- Remove batteries if they are exhausted or if the remote control is not to be used for a long time.
- Batteries contain chemical substances, they should be disposed of properly.

Risk of swallowing batteries!

- The product/remote control may contain a coin type battery, which can be swallowed. Keep the battery out of reach of children at all times!

Care for your product

- Do not insert any objects other than discs into the disc compartment.
- Do not insert warped or cracked discs into the disc compartment.
- Remove discs from the disc compartment if you are not using the product for an extended period of time.
- Use only microfiber cloth to clean the product.

Care of the environment



Your product is designed and manufactured with high quality materials and components, which can be recycled and reused.



When this crossed-out wheeled bin symbol is attached to a product it means that the product is covered by the European Directive 2002/96/EC. Please inform yourself about the local separate collection system for electrical and electronic products.

Please act according to your local rules and do not dispose of your old products with your normal household waste.

Correct disposal of your old product helps to prevent potential negative consequences for the environment and human health.



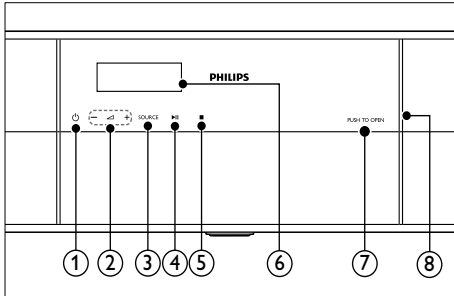
Your product contains batteries covered by the European Directive 2006/66/EC, which cannot be disposed with normal household waste.

Please inform yourself about the local rules on separate collection of batteries because correct disposal helps to prevent negative consequences for the environmental and human health.

4 Your home theater

Congratulations on your purchase, and welcome to Philips! To fully benefit from the support that Philips offers, register your home theater at www.philips.com/welcome.

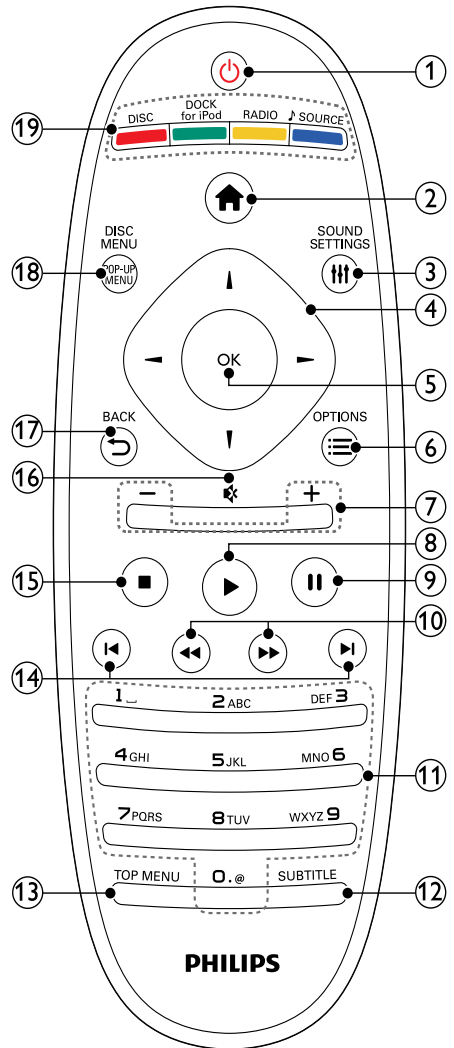
Main unit



- ① **⏻ (Standby-On)**
Switch the home theater on or to standby.
- ② **+/- (Volume)**
Increase or decrease volume.
- ③ **SOURCE**
Select an audio or video source for the home theater.
- ④ **▶|| (Play/Pause)**
Start, pause or resume play.
- ⑤ **■ (Stop)**
Stop play.
- ⑥ **Display panel**
- ⑦ **PUSH TO OPEN**
Push to open the disc compartment.
- ⑧ **Disc compartment**

Remote control

This section includes an overview of the remote control.



- ① **⏻ (Standby-On)**
 - Switch the home theater on or to standby.
 - When EasyLink is enabled, press and hold for at least three seconds to switch all connected HDMI CEC compliant devices to standby.
- ② **🏠 (Home)**
Access the home menu.
- ③ **🔊 SOUND SETTINGS**
Access or exit sound options.
- ④ **Navigation buttons**
 - Navigate menus.
 - In radio mode, press left or right to start auto search.
 - In radio mode, press up or down to tune the radio frequency.
- ⑤ **OK**
Confirm an entry or selection.
- ⑥ **☰ OPTIONS**
 - Access more play options while playing a disc or a USB storage device.
 - In radio mode, set a radio station.
- ⑦ **+/- (Volume)**
Increase or decrease volume.
- ⑧ **▶ (Play)**
Start or resume play.
- ⑨ **⏸ (Pause)**
Pause play.
- ⑩ **◀◀ / ▶▶ (Fast Backward/Fast Forward)**
Search backwards or forward. Press repeatedly to change the search speed.
- ⑪ **Alphanumeric buttons**
 - Enter values or letters (using SMS style entry).
 - In radio mode, select a preset radio station.
- ⑫ **SUBTITLE**
Select subtitle language for video.
- ⑬ **TOP MENU**
Access the main menu of a video disc.
- ⑭ **◀ / ▶ (Previous/Next)**
 - Skip to the previous or next track, chapter or file.
 - In radio mode, select a preset radio station.

- ⑮ **■ (Stop)**
Stop play.
- ⑯ **✱ (Mute)**
Mute or restore volume.
- ⑰ **↶ BACK**
 - Return to a previous menu screen.
 - In radio mode, press and hold to erase the current preset radio stations.
- ⑱ **POP-UP MENU/DISC MENU**
Access or exit the disc menu when you play a disc.
- ⑲ **Source buttons**
 - **Color buttons:** Select tasks or options for Blu-ray discs.
 - **DISC:** Switch to disc source.
 - **DOCK for iPod:** Switch to Philips dock for iPod or iPhone.
 - **RADIO:** Switch to FM radio.
 - **🔊 SOURCE:** Select an audio input source.

EasyLink controls

With Easylink, you can control your home theater and the TV with the following buttons on your home theater remote control (see 'EasyLink' on page 25).

- **⏻ (Standby-On):** Press and hold to switch your home theater, TV and the connected devices to standby.
- **▶ (Play):** When a video disc is in the disc compartment, wake up the TV from standby, and then play a disc.

5 Connect your home theater

This section helps you connect your home theater to a TV and other devices.

For information about the basic connections of your home theater and accessories, see the quick start guide. For a comprehensive interactive guide, see www.connectivityguide.philips.com.

Note

- For identification and supply ratings, refer to the type plate at the back or bottom of the product.
- Before you make or change any connections, make sure that all devices are disconnected from the power outlet.

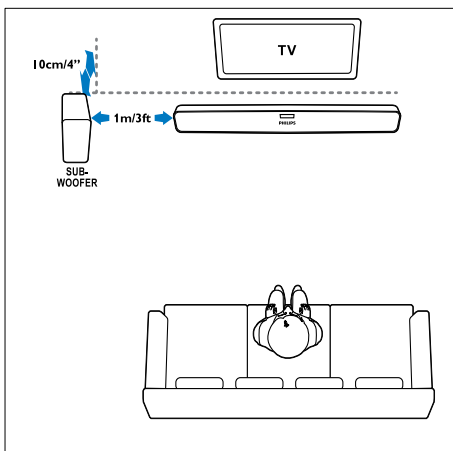
Subwoofer

Follow the steps below to position, connect, and set up your subwoofer.

Position

Place the subwoofer at least one meter (three feet) away from either the left or right of your home theater, and ten centimeter away from the wall.

For best results, place your subwoofer as shown below.



Connect

Connect your subwoofer to your home theater as described in the Quick start guide.

Setup

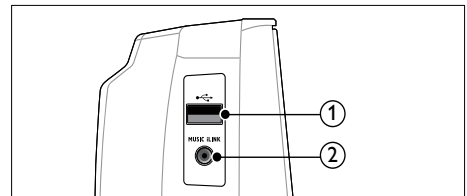
Set up your subwoofer through the audio menu.

- 1 Press **⬆** (Home) on your home theater remote control, and select **[Setup] > [Audio] > [Subwoofer volume]**.
- 2 Change the volume.

Connectors

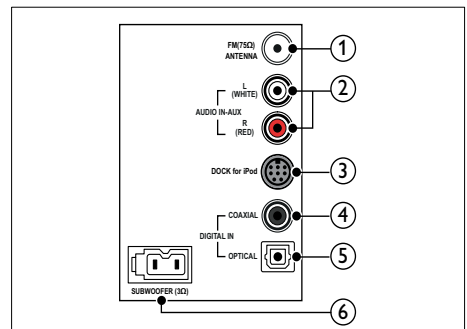
Connect other devices to your home theater.

Side left



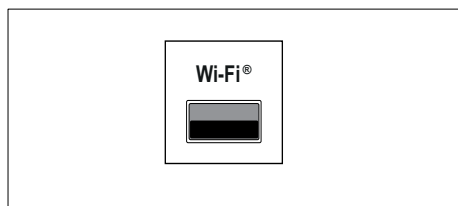
- ① **USB**
Audio, video or picture input from a USB storage device.
- ② **MUSIC iLINK**
Audio input from an MP3 player.

Rear left



- ① **ANTENNA FM 75 Ω**
Signal input from an antenna, cable or satellite.
- ② **AUDIO IN-AUX**
Connect to an analog audio output on the TV or an analog device.
- ③ **DOCK for iPod**
Connect to a Philips dock for iPod or iPhone. (Model: Philips DCK3060)
- ④ **DIGITAL IN-COAXIAL**
Connect to a coaxial audio output on the TV or a digital device.
- ⑤ **DIGITAL IN-OPTICAL**
Connect to an optical audio output on the TV or a digital device.
- ⑥ **SUBWOOFER**
Connect to the supplied subwoofer.

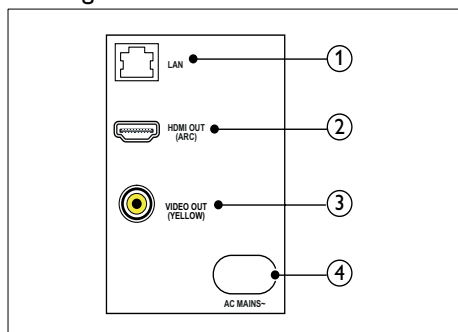
Rear center



Wi-Fi ®

Connect to a Wi-Fi dongle (Model: Philips WUB1110).

Rear right



- ① **LAN**
Connect to the LAN input on a broadband modem or router.
- ② **HDMI OUT (ARC)**
Connect to the HDMI input on the TV.
- ③ **VIDEO OUT**
Connect to the composite video input on the TV.
- ④ **AC MAINS~**
Connect to the power supply.

Connect to TV

Connect your home theater to a TV to watch videos. You can listen to audio from TV programs through your home theater speakers. Use the best quality connection available on your home theater and TV.

Option 1: Connect to TV through HDMI (ARC)

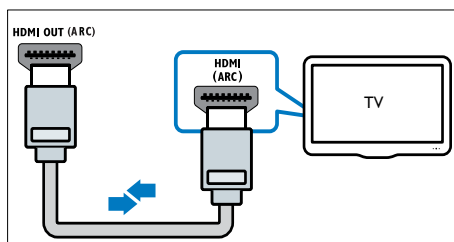
Best quality video

Your home theater supports HDMI version 1.4 - Audio Return Channel (ARC). If your TV is HDMI ARC compliant, connect your home theater to the TV through the HDMI ARC connection for easy and quick setup.

With HDMI ARC, you do not need an additional audio cable to play audio from TV through your home theater.

- 1 Using a High Speed HDMI cable, connect the **HDMI OUT (ARC)** connector on your home theater to the **HDMI ARC** connector on the TV.

The **HDMI ARC** connector on the TV might be labeled **HDMI IN** or **HDMI**. For details on TV connectors, see the TV user manual.



- 2 On your TV, turn on HDMI-CEC. For details, see the TV user manual.
 - ↳ When you play a disc on your home theater, the video is automatically displayed on TV and the audio is automatically played on the home theater.
- 3 If audio from the TV does not play automatically on your home theater, set up the audio manually (see 'Set up audio for connected devices' on page 13).

Option 2: Connect to TV through HDMI

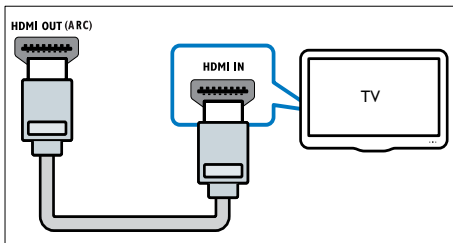
Best quality video

If your TV is not HDMI ARC compliant, connect your home theater to the TV through a standard HDMI connection.

With a standard HDMI connection, you need an additional audio cable to play the audio from the TV through your home theater (see 'Connect audio from TV and other devices' on page 13).

- 1 Using a High Speed HDMI cable, connect the **HDMI OUT (ARC)** connector on your home theater to the **HDMI** connector on the TV.

The HDMI connector on the TV might be labeled **HDMI IN**.



- 2 On your TV, turn on HDMI-CEC. For details, see the TV user manual.
 - ↳ When you play a disc on your home theater, the video is automatically displayed on TV and the audio is automatically played on the home theater.
- 3 To play audio from TV programs through your home theater, connect an additional audio cable (see 'Connect audio from TV and other devices' on page 13).
- 4 If audio from the TV does not play automatically on your home theater, set up the audio manually (see 'Set up audio for connected devices' on page 13).

Note

- If your TV has a DVI connector, you can use an HDMI/DVI adapter to connect to TV.

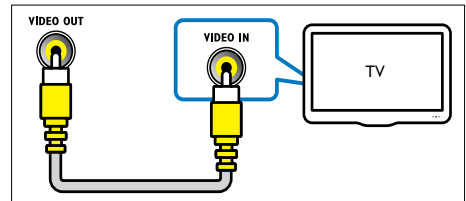
Option 3: Connect to the TV through composite video

Basic quality video

If your TV does not have HDMI connectors, connect your home theater to the TV through a composite connection. A composite connection does not support high-definition video.

With a composite connection, you need an additional audio cable to play the audio from the TV through your home theater (see 'Connect audio from TV and other devices' on page 13).

- 1 Using a composite video cable, connect the **VIDEO** connector on your home theater to the composite video connector on the TV. The composite video connector might be labeled **AV IN**, **VIDEO IN**, **COMPOSITE**, or **BASEBAND**.



- 2 On your TV, switch to the correct video input.
- 3 To play audio from TV programs through your home theater, connect an additional audio cable (see 'Connect audio from TV and other devices' on page 13).

On your home theater, press **SOURCE** repeatedly to select the correct audio input.

Connect audio from TV and other devices

Play audio from TV or other devices through your home theater.

Use the best quality connection available on your TV, home theater, and other devices.

Note

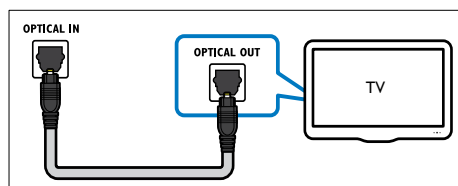
- The audio connections in this user manual are only recommendations. You can use other connections too.
- When your home theater and TV are connected through **HDMI ARC**, an audio connection is not required.

Option 1: Connect audio through a digital optical cable

Best quality audio

Using an optical cable, connect the **OPTICAL** connector on your home theater to the **OPTICAL OUT** connector on the TV or other device.

The digital optical connector might be labeled **SPDIF**, **SPDIF OUT**, or **OPTICAL**.

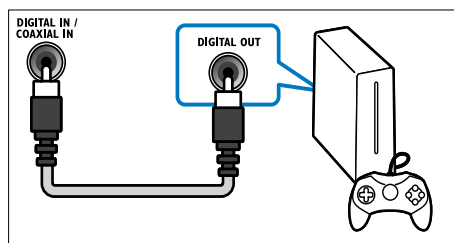


Option 2: Connect audio through a digital coaxial cable

Good quality audio

Using a coaxial cable, connect the **COAXIAL** connector on your home theater to the **COAXIAL/DIGITAL OUT** connector on the TV or other device.

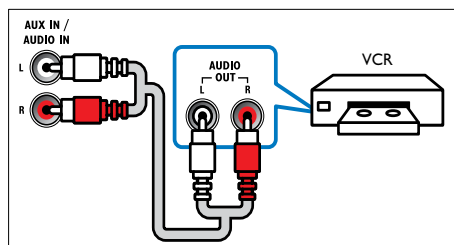
The digital coaxial connector might be labeled **DIGITAL AUDIO OUT**.



Option 3: Connect audio through analog audio cables

Basic quality audio

Using an analog cable, connect the **AUX** connectors on your home theater to the **AUDIO OUT** connectors on the TV or other device.



Set up audio for connected devices

When you connect a device to your home theater, check the audio settings.

- 1 On your TV and other devices, turn on HDMI-CEC. For details, see the user manual of the TV and the other device.
- 2 Select 'Amplifier' from the TV speakers menu. For details, see the TV user manual.
- 3 On your home theater, turn on System Audio Control, and then map the audio of the connected device to the correct connectors on your home theater (see 'Play audio from home theater' on page 25).

If the connected device is not HDMI-CEC compliant, press **SOURCE** repeatedly on your home theater to select the correct audio input.

Internet

Connect your home theater to the internet and enjoy:

- **YouTube videos:** Browse, search, and watch YouTube videos through the Internet (see 'YouTube videos' on page 23).
- **Picasa web albums:** Access, search, and view photos stored in your Picasa web albums through the Internet (see 'Picasa Web Albums' on page 24).
- **BD-Live applications:** Access exclusive services from the BD-Live enabled Blu-ray discs (see 'BD-Live on Blu-ray' on page 18).
- **Software update:** update the home theater software through the network (see 'Update software through the Internet' on page 30).

Caution

- Familiarize yourself with the network router and networking principles before you try to connect the home theater to a network. If necessary, read documentation that accompanies the network components. Philips is not responsible for lost, damaged, or corrupt data.

Wired connection

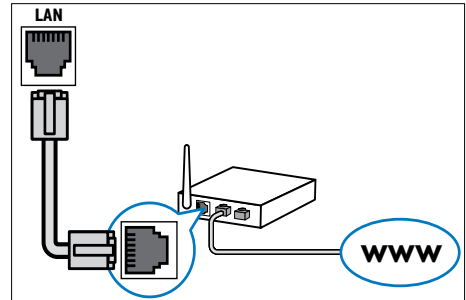
Connect your home theater to your router through a network cable.

What you need

- A network router (with DHCP enabled).
- A network cable (RJ45 straight cable).
- For BD-Live application and software update, make sure that the network router has access to the Internet and the firewall is disabled.

Set up the wired network

Connect your home theater to your router as shown below, and then switch on the devices.



- 1 Connect the home theater to a network router through a wired connection (see 'Wired connection' on page 14).
- 2 Turn on your TV, and switch to the correct source for the home theater.
- 3 Press **⬆** (Home).
- 4 Select **[Setup]**, and then press **OK**.
- 5 Select **[Network] > [Network Installation] > [Wired (Ethernet)]**, and then press **OK**.
- 6 Follow the instructions on the TV to complete the setup.
 - ➡ The home theater connects to the internet. If connection fails, select **[Retry]**, and then press **OK**.
- 7 Select **[Finish]**, and then press **OK** to exit.

Check wired network settings

- 1 Press **⬆** (Home).
- 2 Select **[Setup]**, and then press **OK**.
- 3 Select **[Network] > [View Network Settings]**, and then press **OK**.
 - ➡ The current network settings are displayed.

Wireless connection

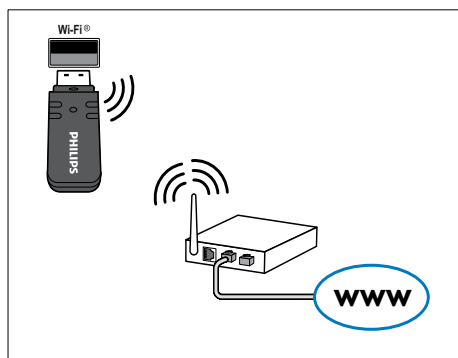
Connect your home theater to your router through a wireless connection.

What you need

- A network router (with DHCP enabled).
- A Wi-Fi dongle (Model: Philips WUB1110).
- For software update, make sure that the network router has access to the Internet and is not restricted by firewalls or other security systems.

Set up the wireless network

Connect your home theater to your router as shown below, and then switch on the devices.



- 1 Connect the home theater to a network router through a wireless connection (see 'Wireless connection' on page 15).
- 2 Turn on your TV, and switch to the correct source for the home theater.
- 3 Press **⬆** (Home).
- 4 Select **[Setup]**, and then press **OK**.
- 5 Select **[Network]** > **[Network Installation]** > **[Wireless (Wi-Fi)]**, and then press **OK**.
- 6 Follow the instructions on the TV to complete the setup.
 - ↳ The home theater connects to the internet. If connection fails, select **[Retry]**, and then press **OK**.
- 7 Select **[Finish]**, and then press **OK** to exit.

Check wireless network settings

- 1 Press **⬆** (Home).
- 2 Select **[Setup]**, and then press **OK**.
- 3 Select **[Network]** > **[View Wireless Settings]**, and then press **OK**.
 - ↳ The current Wi-Fi settings are displayed.

6 Use your home theater

This section helps you use the home theater to play media from a wide range of sources.

Before you start

- Make the necessary connections described in the Quick start guide and the user manual.
- Switch the TV to the correct source for the home theater.

Choose sound

This section helps you choose the ideal sound for your video or music.

- 1 Press **III SOUND SETTINGS**.
- 2 Press the **Navigation buttons** (left/right) to access the sound options on the display.

Sound settings	Description
SOUND	Select a sound mode.
SURROUND	Select surround sound or stereo sound.
TREBLE	Change the high frequency output.
BASS	Change the low frequency output.
AUD SYNC	Delay the audio to match the video.

- 3 Select an option, and then press **OK**.
- 4 Press **↩ BACK** to exit.

Sound mode

Select predefined sound modes to suit your video or music.

- 1 Press **III SOUND SETTINGS**.
- 2 Select **SOUND**, and then press **OK**.
- 3 Press the **Navigation buttons** (up/down) to select a setting on the display:
 - **MOVIE**: Enjoy a cinematic audio experience, specially enhanced for movies.

- **MUSIC**: Recreate the original recording environment of your music, in the studio or at a concert.
- **ORIGINAL**: Experience the original sound of your movies and music, without added sound effects.
- **NEWS**: Hear every word with optimized speech and clear vocals.
- **GAMING**: Enjoy thrilling arcade sounds, ideal for action-packed video games or loud parties.

- 4 Press **OK** to confirm.

Surround sound mode

Experience an immersive audio experience with surround sound modes.

- 1 Press **III SOUND SETTINGS**.
- 2 Select **SURROUND**, and then press **OK**.
- 3 Press the **Navigation buttons** (up/down) to select the following settings:
 - **AUTO**: Surround sound based on the audio stream.
 - **V SURR**: Virtual Surround.
 - **STEREO**: Two-channel stereo sound. Ideal for listening to music.
- 4 Press **OK** to confirm.

Equalizer

Change the high frequency (treble) and low frequency (bass) settings of the home theater.

- 1 Press **III SOUND SETTINGS**.
- 2 Select **TREBLE** or **BASS**, and then press **OK**.
- 3 Press the **Navigation buttons** (up/down) to change the frequency.
- 4 Press **OK** to confirm.

Discs

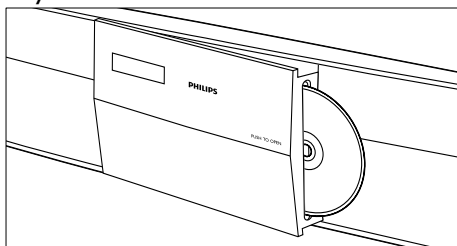
Your home theater can play DVDs, VCDs, CDs, and Blu-ray discs. It can also play discs that you've made at home, such as CD-R discs of photos and music.

What you need

For audio or 2D video:

- Audio and video connection between your home theater and the TV.
- An audio or a video disc.

Play discs



- 1 When you switch on your home theater, press **PUSH TO OPEN** to open the disc compartment.
- 2 Insert a disc, and then close the disc compartment.
→ Your TV switches to the correct source and the disc plays automatically.
- 3 If the disc does not play automatically, press **DISC** or select **[play Disc]** in the home menu, and then press **OK**.
- 4 Press the play buttons to control play (see 'Play buttons' on page 17).

Play buttons

Button	Action
Navigation buttons	Navigate menus.
OK	Confirm an entry or selection.
▶ (Play)	Start or resume play.
II	Pause play.
■	Stop play.
◀ / ▶	Skip to the previous or next track, chapter or file.
◀◀ / ▶▶	Fast backwards or fast forwards. Press repeatedly to change the search speed.
Navigation buttons (up/down)	Rotate the picture clockwise or counter-clockwise.
SUBTITLE	Select subtitle language for video.
POP-UP MENU/DISC MENU	Access or exit the disc menu.
≡ OPTIONS	Access the advanced options when you play your audio, video, or media files (see 'Audio, video, and picture options' on page 20).

For video formats such as DivX:

- To stop play, press **■**.
- To resume the video from where you stopped, press **▶ (Play)**.
- To play the video from the start, press **OK**.

Display menu for VCD and SVCD

Display the content menu on VCD and SVCD discs.

- 1 Press **⬆ (Home)**.
- 2 Select **[Setup] > [Preference]**, and then press **OK**.
- 3 Select **[VCD PBC] > [On]**, and then press **OK**.

Note

- To skip the content menu, select **[Off]**.

Synchronize picture and sound

If the audio and video are not synchronized, delay the audio to match the video.

- 1 Press **III SOUND SETTINGS**.
- 2 Select **AUD SYNC**, and then press **OK**.
- 3 Press the **Navigation buttons** (up/down) to synchronize the audio with the video.
- 4 Press **OK** to confirm.

Bonus View on Blu-ray

On Blu-ray discs that support the Bonus View, enjoy extra content, such as a director's commentary, while you watch the main feature. Bonus View is also known as picture-in-picture.

- 1 Enable Bonus View (picture-in-picture) in the Blu-ray disc menu.
- 2 While you play the main feature, press **≡ OPTIONS**.
 - ↳ The options menu is displayed.
- 3 Select **[PIP Selection] > [PIP]**, and then press **OK**.
 - ↳ Depending on the video, PIP option [1] or [2] is displayed.
 - ↳ The picture-in-picture video is displayed in a small window.
- 4 Select **[2nd Audio Language]** or **[2nd Subtitle Language]**, and then press **OK**.
- 5 Select the language, and then press **OK**.

Note

- To turn off Bonus View, press **≡ OPTIONS**, select **[PIP Selection] > [Off]**, and then press **OK**.

BD-Live on Blu-ray

On Blu-ray discs with BD-Live content, access additional features, such as internet chats with the director, latest movie trailers, games, wallpaper, and ringtones.

What you need

- a Blu-ray disc with BD-Live content
- an internet connection
- a USB storage device, with at least 1GB of memory

Note

- BD-Live services vary from country to country, and depend on the disc.
- When you use BD-Live, data on the disc and home theater are accessed by the content provider.

Access BD-Live with a USB storage device

- 1 Connect your home theater to the home network and internet (see 'Internet' on page 14).
- 2 Connect the USB storage device to the home theater.
 - The USB storage device is used to store the downloaded BD-Live content.
- 3 Select the BD-Live icon in the disc menu, and then press **OK**.
 - ↳ BD-Live starts to load. The loading time depends on the disc and your internet connection.
- 4 Press the **Navigation buttons** to navigate BD-Live, and then press **OK** to select an item.

Clear memory

If your storage device does not have enough memory for the BD-Live content, clear the memory on the storage device.

- 1 Press **⬆ (Home)**.
- 2 Select **[Setup]**, and then press **OK**.
- 3 Select **[Advanced] > [Clear memory]**, and then press **OK**.
 - ↳ This clears the local memory and deletes the BD-Live files that you downloaded on your storage device.

Disable BD-Live

To restrict access to BD-Live, turn on the BD-Live security.

- 1 Press **⬆** (Home).
- 2 Select **[Setup]**, and then press **OK**.
- 3 Select **[Advanced] > [BD-Live security] > [On]**, and then press **OK**.
 ↳ BD-Live access is restricted.

Note

- You cannot restrict internet access on commercial Blu-ray discs.

USB storage devices

Enjoy pictures, audio and video on a USB storage device.

What you need

- A USB storage device that is formatted for FAT or NTFS file systems, and complies with the Mass Storage Class.
- A USB extension cable, if the USB storage device does not fit into the connector.

Note

- You can use digital cameras connected by USB if they can play the files without using a special computer program.
- To play DivX DRM - protected files from a USB storage device, connect your home theater to a TV through an HDMI cable.

Play buttons

Button	Action
Navigation buttons	Navigate menus.
OK	Confirm an entry or selection.
▶ (Play)	Start or resume play.
II	Pause play.
■	Stop play.
⏮ / ⏭	Skip to the previous or next track, chapter or file.
⏮ / ⏭	Fast backwards or fast forwards. Press repeatedly to change the search speed.
Navigation buttons (up/down)	Rotate the picture clockwise or counter-clockwise.
SUBTITLE	Select subtitle language for video.
≡ OPTIONS	Access the advanced options when you play your audio, video, or media files (see 'Audio, video, and picture options' on page 20).

For video formats such as DivX:

- To stop play, press **■**.
- To resume the video from where you stopped, press **▶ (Play)**.
- To play the video from the start, press **OK**.

Play files

- 1 Connect the USB storage device to the home theater.
- 2 Press **⬆** (Home).
 ↳ The home menu is displayed.
- 3 Select **[browse USB]**, and then press **OK**.
 ↳ A content browser is displayed.
- 4 Select a file, and then press **OK**.
- 5 Press the playback buttons to control play (see 'Play buttons' on page 19).

DivX

Play DivX videos from :

- a disc (see 'Discs' on page 17),
- a USB storage device (see 'USB storage devices' on page 19).

 **Note**

- To play DivX DRM protected files from a disc or a USB storage device, connect your home theater to a TV through an HDMI cable.

VOD code for DivX

Before you purchase DivX videos and play them on your home theater, register the home theater on www.divx.com using the DivX VOD code.

- 1 Press **⬆** (**Home**).
- 2 Select **[Setup]**, and then press **OK**.
- 3 Select **[Advanced] > [DivX® VOD Code]**, and then press **OK**.
↳ The DivX VOD registration code for your home theater is displayed.

Subtitles

If your video has subtitles in multiple languages, select a subtitle language.

- 1 While playing video, press **SUBTITLE** to select a language.

 **Note**

- Make sure that the subtitle file has the same name as the video file. For example, if the video file is named 'movie.avi', save the subtitle file as 'movie.srt' or 'movie.sub'.
- Your home theater can play subtitle files in the following formats: .srt, .sub, .txt, .ssa, .ass, .smi, and .sami. These files do not appear in the file navigation menu.
- If the subtitles do not appear correctly, change the character set.

Subtitle character set

If the subtitles do not appear correctly, change the character set that supports the DivX subtitle.

- 1 Press **≡ OPTIONS**.
↳ The options menu is displayed.
- 2 Press the **Navigation buttons** to select **[Character Set]**, and then press **OK**.
- 3 Select a character set.

Character Set	Language
[Standard]	English, Albanian, Danish, Dutch, Finnish, French, Gaelic, German, Italian, Kurdish (Latin), Norwegian, Portuguese, Spanish, Swedish and Turkish
[Central Europe]	Albanian, Croat, Czech, Dutch, English, German, Hungarian, Irish, Polish, Romanian, Slovak, Slovene and Sorbian
[Cyrillic]	Bulgarian, Belorussian, English, Macedonian, Moldavian, Russian, Serbian and Ukrainian
[Greek]	Greek

Audio, video, and picture options

Use advanced features when you play audio, video, or media files from a disc or a USB storage device.

Audio options

While playing audio, repeat an audio track, a disc, or a folder.

- 1 Press **≡ OPTIONS** repeatedly to cycle through the following functions:
 - **RPT TRACK / RPT FILE**: Repeat the current track or file.
 - **RPT DISC / RPT FOLDER**: Repeat all the tracks on the disc or the folder.
 - **RPT RANDOM**: Play audio tracks in random order.
 - **RPT OFF**: Turn off the repeat mode.

Video options

While watching video, select options such as subtitles, audio language, time search, and picture settings. Depending on the video source, some options are not available.

- 1 Press **≡** **OPTIONS**.
 ↳ The video options menu is displayed.
- 2 Press the **Navigation buttons** and **OK** to select and change:
 - **[Audio Language]**: Select audio language for video.
 - **[Subtitle Language]**: Select subtitle language for video.
 - **[Info]**: Display information about what is playing.
 - **[Character Set]**: Select a character set that supports the DivX subtitle.
 - **[Time Search]**: Skip to a specific part of the video by entering the time of the scene.
 - **[2nd Audio Language]**: Select the second audio language for Blu-ray video. (For Blu-ray discs only)
 - **[2nd Subtitle Language]**: Select the second subtitle language for Blu-ray video. (For Blu-ray discs only)
 - **[Titles]**: Select a specific title.
 - **[Chapters]**: Select a specific chapter.
 - **[Angle List]**: Select a different camera angle.
 - **[Menus]**: Display the disc menu.
 - **[PIP Selection]**: Display Picture-in-Picture window when playing a Blu-ray disc that supports the Bonus View. (For Blu-ray discs only)
 - **[Zoom]**: Zoom into a video scene or picture. Press the **Navigation buttons** (left/right) to select a zoom factor.
 - **[Repeat]**: Repeat a chapter or title.
 - **[Repeat A-B]**: Mark two points within a chapter or track to repeat play, or turn off the repeat mode.
 - **[Picture Settings]**: Select a predefined color setting.

Picture options

While viewing a picture, zoom into the picture, rotate it, add animation to a slideshow, and change the picture settings.

- 1 Press **≡** **OPTIONS**.
 ↳ The video options menu is displayed.
- 2 Press the **Navigation buttons** and **OK** to select and change:
 - **[Rotate +90]**: Rotate the picture 90 degree clockwise.
 - **[Rotate -90]**: Rotate the picture 90 degree counter-clockwise.
 - **[Zoom]**: Zoom into a video scene or picture. Press the **Navigation buttons** (left/right) to select a zoom factor.
 - **[Info]**: Display picture information.
 - **[Duration per slide]**: Select the display speed for each picture in a slide show.
 - **[Slide Animation]**: Select animation for the slide show.
 - **[Picture Settings]**: Select a predefined color setting.
 - **[Repeat]**: Repeat a selected folder.

Slideshows

While playing audio, access fun features such as picture and musical slideshows.

Picture slideshows

View a slideshow of your pictures stored in your disc or a USB storage device.

- 1 Select a picture from a disc or USB storage device, and then press **▶** (**Play**).
- 2 Press **≡** **OPTIONS**.
- 3 Press **Navigation buttons** and **OK** to select the following settings:
 - **[Slide Animation]**: Select an animation for the slideshow.
 - **[Duration per slide]**: Select a display speed for each picture in a slideshow.
- 4 Press **■** to stop the slideshow.

Musical slideshows

Create a musical slideshow to play music and pictures at the same time.

- 1 Select a music track, and then press **OK**.
- 2 Press **↶ BACK**, and go to the picture folder.
- 3 Select a picture, and then press **▶ (Play)** to start the slideshow.
- 4 Press **■** to stop slideshow.
- 5 Press **■** again to stop music.

Radio

Listen to FM radio on your home theater; and store up to 40 radio stations.

What you need

- FM antenna.

Note

- AM and digital radio are not supported.
- If no stereo signal is detected, you are prompted to install the radio stations again.
- For the best reception, place the antenna away from the TV or other sources of radiation.

Tune stations

- 1 Connect the FM antenna as described in the Quick start guide.
- 2 Press **RADIO**.
 - ↳ If you have already installed the radio stations, the last channel that you listened to is played.
 - ↳ If you have not installed any radio stations, the message **AUTO INSTALL... PRESS PLAY** appears on the display panel. Press **▶ (Play)**.
- 3 Press the following buttons to listen or to change radio stations:

Button	Action
◀/▶ or Alphanumeric buttons	Select a preset radio station.
Navigation buttons (left/right)	Search for a radio station.
Navigation buttons (up/down)	Fine tune a radio frequency.
■	Press to stop the installation of radio stations.
↶ BACK	Press and hold to erase the preset radio station.
≡ OPTIONS	Manual: Press once to access program mode, and press again to store the radio station. Automatic: Press and hold for three seconds to reinstall the radio stations.
RADIO	Toggle between the stereo and mono sounds.

Listen to radio

- 1 Press **RADIO**.
 - To listen to a preset station, press **◀** or **▶**.
 - To search for a radio station, and then listen, press **Navigation buttons** (left/right).
- 2 Press **+/- (Volume)** to change the volume.

Tuning grid

In some countries, you can toggle the FM tuning grid between 50 kHz and 100 kHz. Switching the tuning grid erases all preset radio stations.

- 1 Press **RADIO**.
- 2 Press **■**.
- 3 Press and hold **▶ (Play)** to toggle between 50 kHz or 100 kHz.

MP3 player

Connect your MP3 player to play your audio files or music.

What you need

- An MP3 player.
- A 3.5mm stereo audio cable.

Play music

- 1 Connect the MP3 player to the home theater as described in the quick start guide.
- 2 Press **⏮ SOURCE** repeatedly until **MUSIC I-LINK** appears on the display panel.
- 3 Press the buttons on the MP3 player to select and play audio files or music.

iPod or iPhone

When you connect a Philips dock for iPod/iPhone, you can use the home theater to play music, movies and photos from your iPod or iPhone.

What you need

- A Philips dock (Model: Philips DCK3060).
- A yellow composite cable.



Note

- Charge your iPod/iPhone on the dock while the home theater is in iPod mode.

Dock your iPod or iPhone

- 1 Move the slide at the bottom of the dock to **STANDARD**, and then connect the dock to the home theater.
- 2 Connect the yellow composite cable to the dock and TV.
- 3 Switch on the iPod or iPhone, and place it on the dock.

Play music

- 1 Dock your iPod or iPhone (see 'Dock your iPod or iPhone' on page 23).
- 2 Press **DOCK for iPod** on the home theater remote control.
- 3 Browse on the iPod or iPhone screen to select music tracks.

Play video and slideshows

- 1 Dock your iPod or iPhone (see 'Dock your iPod or iPhone' on page 23).
- 2 Press **DOCK for iPod** on the home theater remote control.
- 3 Switch the TV to the **AV/VIDEO** source (corresponding to the yellow composite cable).
↳ The TV screen goes blank.
- 4 Browse on the iPod or iPhone screen to select videos or photos.
- 5 Press **▶ (Play)** to play the videos or photos.

YouTube videos

Browse, search, and watch YouTube videos through your home theater:

- 1 Connect your home theater to the Internet (see 'Internet' on page 14).
- 2 Press **⬆ (Home)**.
- 3 Select the YouTube icon, and then press **OK**.
↳ The default YouTube Leanback page is displayed.
- 4 To navigate the YouTube Leanback menu and select options, press the **Navigation buttons**, and then press **OK**.
- 5 To exit YouTube and return to the home menu, press **⬆ (Home)**.



Note

- If you don't press any button for few seconds, the onscreen buttons and menu disappear.

Play and search buttons

Button	Action
Navigation buttons (up)	Display the onscreen keyboard. Use the onscreen keyboard to search for a video.
Navigation buttons (down)	Display the onscreen play buttons.
Navigation buttons (left/right)	While browsing the video playlist, select the previous or next video. Select the onscreen play buttons to play the video.
OK	Confirm an entry or selection.
▶ (Play)	Start or resume play.
⏸	Pause play.
■	Stop play.
◀ / ▶	Skip to the previous or next video.
◀◀ / ▶▶	Skip backwards or forwards while playing video.

Picasa Web Albums

Access, search, and view photos stored in your Picasa Web Albums through your home theater.

What you need

- An account with Picasa Web Albums.
- A wired or wireless home network (depending on the network capability of your home theater).

1 Connect your home theater to the Internet (see 'Internet' on page 14).

2 Press **⬆ (Home)**.

3 Select the Picasa icon, and then press **OK**.
➡ The default Picasa menu is displayed.

4 Log in to the Picasa Web Albums using your Picasa web account.

- The first time you log in, select New User+, and then enter your username and password. Save your login data for easy access later.
- If you have logged in before, select a stored username and enter the password.
- Press the alphanumeric keys on the remote control to enter your username and password.

5 Press the **Navigation buttons** to select one of the following, and then press **OK**.

- My Photos: Display thumbnails of the photos saved in your Picasa Web Albums.
- Featured: Display thumbnails of featured photos from Picasa website.
- Friends: Display the list of friends.
- Search: Search photos based on keywords.
- Favorites: Display the favorite albums from your Picasa Web Albums.
- Tag: Display the photos that are tagged in the Picasa Web Albums.

6 Press **⬆ (Home)** to exit Picasa menu.

View albums and slideshows

1 Press the **Navigation buttons** to select My Photos from the Picasa menu, and then press **OK**.

➡ The photo albums in your Picasa Web Albums are displayed.

2 Press the **Navigation buttons** to select a photo, and then press **OK** to view the photo in full screen.

3 Press **OK** again to view the photos in a slideshow.

4 While viewing a slideshow, press **≡ OPTIONS** and **Navigation buttons** to select one of the following, and then press **OK**:

- Current playing: Display the index of the current photo.
- Slideshow pause/ play: Select to pause or play a slideshow.
- Rotate: Select to rotate the current photo.
- Zoom: Select to zoom in or zoom out the photo.
- Effect: Select a slideshow effect.
- Speed: Select a slideshow speed.
- Friends: Add the owner of the current photo to the friends list.

5 Press **⬅ BACK** to return to the previous screen.

EasyLink

The home theater supports Philips EasyLink, which uses the HDMI-CEC (Consumer Electronics Control) protocol. EasyLink-compliant devices that are connected through HDMI can be controlled by a single remote control.

Philips does not guarantee 100% interoperability with all HDMI-CEC devices.

What you need

- HDMI-CEC compliant devices.
- An HDMI connection between the connected devices.

Switch on

- 1 On the TV and other connected devices, turn on the HDMI-CEC operations. For details, see the manual of the TV or other devices.
- 2 Press **⬆** (Home).
- 3 Select **[Setup]**, and then press **OK**.
- 4 Select **[EasyLink] > [EasyLink]**, and then press **OK**.
- 5 Select **[On]**, and then press **OK**.

Control devices

Control the home theater and the other connected HDMI-CEC compliant devices with a single remote control.

One-touch play

If you enable One-touch play, the TV automatically switches to the correct channel when you play a disc in your home theater.

One-touch standby

When you press and hold **⏻** (Standby) on the remote control, the home theater and all the connected HDMI-CEC devices (that support one-touch standby) switch to the standby mode.

If one-touch standby is enabled on your home theater, you can switch to standby with the remote control of the TV or other HDMI-CEC devices.

System Audio Control

When you play a device that has its audio output routed to the home theater, the home theater switches to the corresponding audio source automatically.

To use one-touch audio, turn on System Audio Control and follow the instructions on the TV to map connected devices to the audio input connectors of the home theater.

Audio Input Mapping

When you connect a new device to your home theater, map the device to the audio input connector (see 'Play audio from home theater' on page 25).

Play audio from home theater

Play the audio from a connected device through your home theater.

- 1 Press **⬆** (Home).
- 2 Select **[Setup]**, and then press **OK**.
- 3 Select **[EasyLink] > [System Audio Control] > [On]**, and then press **OK**.
 - To play the audio from the TV speakers, select **[Off]**, and skip the following steps.
- 4 Select **[EasyLink] > [Audio Input Mapping]**, and then press **OK**.
- 5 Follow the instructions on the TV to map the audio of the connected device to the audio inputs on your home theater.



Note

- If you connect your home theater to the TV through an HDMI ARC connection, make sure that the TV audio is mapped to the ARC input on your home theater.



7 Change settings

This section helps you to change the settings of your home theater.

Caution

- Most of the settings are already configured with the best value for your home theater. Unless you have a reason to change a setting, it is best to leave it at the default value.

Note

- You cannot change a setting that is grayed out.
- To return to the previous menu, press  **BACK**. To exit the menu, press  (Home).


Picture

Change the picture settings to suit your preferences.

Note

- The best setting is automatically selected for the TV. If you change the setting, make sure that the TV supports the new settings.


Picture settings and format

- 1 Press  (Home).
- 2 Select **[Setup]**, and then press **OK**.
- 3 Select **[Video]**, and then press **OK**.
- 4 Change the following settings, and then press **OK**:
 - **[TV Display]**: Picture format.
 - **[Picture Settings]**: Predefined color settings.

Picture color


Deep Color recreates the natural world on your TV screen and displays vivid images in over a billion of colors.

If your TV supports Deep Color and is connected to your home theater through an HDMI cable, you can change the Deep Color.

- 1 Press  (Home).
- 2 Select **[Setup]**, and then press **OK**.
- 3 Select **[Video]** > **[HDMI Deep Color]**, and then press **OK**.
- 4 Select the following options, and then press **OK**:
 - **[Auto]**: Automatically select HDMI Deep Color.
 - **[On]**: View vivid images.
 - **[Off]**: Display standard 8-bit color.

Picture resolution

For HDMI video settings, connect your home theater to the TV through an HDMI cable.


- 1 Press  (Home).
- 2 Select **[Setup]**, and then press **OK**.
- 3 Select **[Video]** > **[HDMI Video]**, and then press **OK**.
- 4 Change the HDMI resolution setting, and then press **OK**.

Sound

Change the sound settings to suit your preference.

HDMI audio

To hear an HDMI audio output from your TV, connect your home theater to the TV through an HDMI cable.

- 1 Press  (Home).
- 2 Select **[Setup]**, and then press **OK**.
- 3 Select **[Audio]** > **[HDMI Audio]**, and then press **OK**.
- 4 Select the following options, and then press **OK**:
 - **[Bitstream]**: Enable bitstream output over HDMI.
 - **[Auto]**: Automatically select the best supported audio format.
 - **[Off]**: Disable audio from the TV.

Night mode

For quiet listening, decrease the volume of loud sounds when you play discs. Night mode is only available for Dolby-encoded DVD and Blu-ray discs.

- 1 Press **▲** (Home).
- 2 Select **[Setup]**, and then press **OK**.
- 3 Select **[Audio]** > **[Night Mode]** > **[On]**, and then press **OK**.

Language

Select a language for the home menu, audio, and subtitles.

Home menu

- 1 Press **▲** (Home).
- 2 Select **[Setup]**, and then press **OK**.
- 3 Select **[Preference]** > **[Menu language]**, and then press **OK**.
- 4 Select a menu language, and then press **OK**.

Disc audio

- 1 Press **▲** (Home).
- 2 Select **[Setup]**, and then press **OK**.
- 3 Select **[Preference]** > **[Audio]**, and then press **OK**.
- 4 Select an audio language for discs, and then press **OK**.

Note

- If your preferred disc language is not available, select **[Others]** from the list, and enter the 4-digit language code found at the end of this user manual (see 'Language code' on page 37).
- If you select a language that is not available on a disc, the home theater uses the default language of the disc.

Disc subtitle

- 1 Press **▲** (Home).
- 2 Select **[Setup]**, and then press **OK**.
- 3 Select **[Preference]** > **[Subtitle]**, and then press **OK**.
- 4 Select a subtitle language for discs, and then press **OK**.

Disc menu

- 1 Press **▲** (Home).
- 2 Select **[Setup]**, and then press **OK**.
- 3 Select **[Preference]** > **[Disc Menu]**, and then press **OK**.
- 4 Select a menu language for discs, and then press **OK**.

Note

- If your preferred disc language is not available, select **[Others]** from the list, and enter the 4-digit language code found at the end of this user manual (see 'Language code' on page 37).
- If you select a language that is not available on a disc, the home theater uses the default language of the disc.

Parental control

Restrict access to discs that are recorded with ratings.

Password

You can set or change your password to play a restricted disc.

- 1 Press **▲** (Home).
- 2 Select **[Setup]**, and then press **OK**.
- 3 Select **[Preference]** > **[Change Password]**, and then press **OK**.
 - ↳ A change password menu is displayed.
- 4 Follow the instructions on the TV to set or change password.
 - If you do not have a password or you have forgotten, enter **0000**.
- 5 Press **OK**.

Ratings

Some discs are recorded with ratings according to age. You can set up your home theater to play only discs with an age rating lower than your child's age.

- 1 Press **▲** (Home).
 - 2 Select **[Setup]**, and then press **OK**.
 - 3 Select **[Preference]** > **[Parental Control]**, and then press **OK**.
 - ↳ A message prompts you to enter the password.
 - 4 Enter the password with the **Numeric buttons**.
 - 5 Select an age rating, and then press **OK**.
 - To play all discs irrespective of the rating, select level **8** or **[Off]**.
-

Energy saving

Save energy by changing the following settings.

Auto standby

When playing a disc or a USB storage device, automatically switch your home theater to standby if:

- it is in pause or stop mode, and
 - no button is pressed for 30 minutes.
- 1 Press **▲** (Home).
 - 2 Select **[Setup]**, and then press **OK**.
 - 3 Select **[Preference]** > **[Auto Standby]** > **[On]**, and then press **OK**.
-

Sleep timer

Set timers to switch the home theater to standby after a specified time.

- 1 Press **▲** (Home).
- 2 Select **[Setup]**, and then press **OK**.
- 3 Select **[Preference]** > **[Sleep Timer]**, and then press **OK**.
- 4 Select the duration of the sleep timer:
 - ↳ The sleep timer can be set up to 60 minutes. If the sleep timer is set to **[Off]**, it switches off.
- 5 Press **OK** to activate.
 - ↳ The home theater switches to standby after the specified time.

Screen saver

Automatically switch your home theater to screen saver mode if:

- it is in pause or stop mode, and
 - no button is pressed for 10 minutes.
- 1 Press **▲** (Home).
 - 2 Select **[Setup]**, and then press **OK**.
 - 3 Select **[Preference]** > **[Screen Saver]** > **[On]**, and then press **OK**.
-

Display panel

Change the brightness of the home theater display panel.

- 1 Press **▲** (Home).
 - 2 Select **[Setup]**, and then press **OK**.
 - 3 Select **[Preference]** > **[Display Panel]**, and then press **OK**.
 - 4 Select the brightness, and then press **OK**.
-

Apply factory settings

Reset your home theater to the default settings. You cannot reset the parental control settings.

- 1 Press **▲** (Home).
- 2 Select **[Setup]**, and then press **OK**.
- 3 Select **[Advanced]** > **[Restore default settings]**, and then press **OK**.
- 4 Select **[OK]**, and then press **OK**.

8 Wall mount and stand

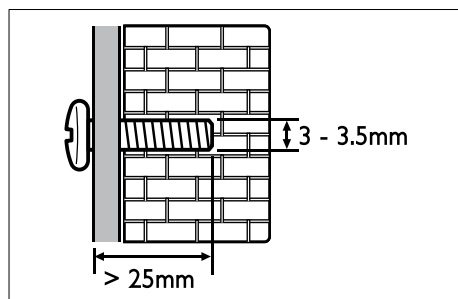
Before you mount your home theater to the wall or onto a single stand, read all safety precautions (see 'Safety' on page 6).

If you have any query, contact Philips Consumer Care in your country.

Wall mount

Screw length/diameter

Depend on the type of wall mounting this wall mount bracket, make sure that you use screws of a suitable length and diameter:



For information about how to wall your home theater, see the wall mount guide.

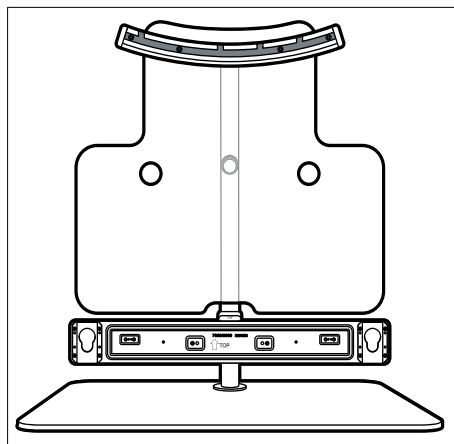
Stand for home theater and TV - STS1100/STS1300

If you have a Philips TV, you can mount your home theater and the TV onto a single stand.

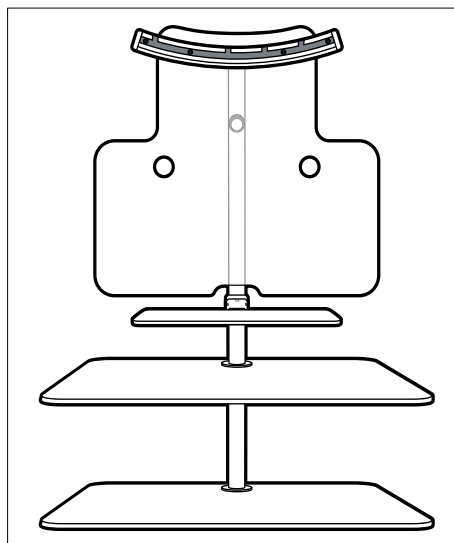
Purchase the STS1100 or STS1300 stand from an authorized Philips dealer:

For instructions on how to install the stand with the home theater and Philips TV, see the stand quick start guide.

STS1100:



STS1300:



9 Update software

To continue to get the best features and support for your home theater, update the software regularly. Compare the version of your current software with the latest version on www.philips.com/support.

Check software version

- 1 Press **⬆** (Home).
- 2 Select **[Setup]**, and then press **OK**.
- 3 Select **[Advanced]** > **[Version Info.]**, and then press **OK**.
↳ The software version is displayed.

Update software through the Internet

- 1 Connect your home theater to the network. Use a
 - wired network connection (see 'Set up the wired network' on page 14), or
 - a wireless network connection (see 'Set up the wireless network' on page 15).
- 2 Press **⬆** (Home).
- 3 Select **[Setup]**, and then press **OK**.
- 4 Select **[Advanced]** > **[Software Update]** > **[Network]**.
↳ If an upgrade media is detected, you are prompted to start or cancel the update.
- 5 Follow the instruction on the TV to confirm the update.
↳ When the software update is complete, the home theater automatically switches off and restarts. If it does not, disconnect the power cord for a few seconds and then reconnect it.

Note

- If the home theater cannot connect to the Philips server, press **⬆** (Home), and then select **[Setup]** > **[Network]** > **[Network Installation]** to set up the network.

Update software through USB

What you need

- A USB flash drive, with at least 75MB of memory. The USB flash drive must be FAT or NTFS formatted. Do not use a USB hard drive.
- A computer with Internet access.
- An archive utility that supports the ZIP file format (for example, WinZip® for Microsoft® Windows® or StuffIt® for Macintosh®).

Step 1: Download the latest software

- 1 Connect a USB flash drive to your computer.
- 2 In your web browser, go to www.philips.com/support.
- 3 At the Philips Support website, find your product and locate the **Software and drivers**.
↳ The software update is available as a zip file.
- 4 Save the zip file in the root directory of your USB flash drive.
- 5 Use the archive utility to extract the software update file in the root directory of the USB flash drive.
↳ The files are extracted under the **UPG_ALL** folder of your USB flash drive.
- 6 Disconnect the USB flash drive from your computer.

Step 2: Update the software

! Caution

- Before you connect the USB flash drive to your home theater, make sure that there is no disc in the disc compartment, and the disc compartment is closed.

- 1 Connect the USB flash drive to your home theater.
- 2 Switch your TV to the correct source for your home theater.
- 3 Press **▲** (Home), and then select **[Setup]**.
- 4 Select **[Advanced]** > **[Software Update]** > **[USB]**.
- 5 Follow the instructions on the TV to confirm the update.
 - ➔ When the software update is complete, the home theater automatically switches off and restarts. If it does not, disconnect the power cord for a few seconds, and then reconnect it.

≡ Note

- When the software update is in progress, do not turn off the power or remove the USB flash drive.

10 Product specifications

≡ Note

- Specifications and design are subject to change without notice.

Region codes

The type plate on the back or bottom of the home theater shows which regions it supports.

Country	DVD	BD
Europe, United Kingdom		
Asia Pacific, Taiwan, Korea		
Latin America		
Australia, New Zealand		
Russia, India		
China		

Media formats

- AVCHD, BD-RE, BD-Video, DVD-Video, DVD+R/+RW, DVD-R/-RW, DVD+R/-R DL, CD-R/CD-RW, Audio CD, Video CD/SVCD, Picture files, MP3-CD, WMA-CD, DivX (Ultra)-CD, USB storage device

File formats

- Audio: .aac, .mka, .mp3, .wma, .wav
- Video: .avi, .divx, .mp4, .mkv, .asf, .mpg, .mpeg
- Picture: .jpg, .jpeg, .gif, .png

Audio formats

Your home theater supports the following audio files.

Extension	Container	Audio codec	Bit rate
.mp3	MP3	MP3	32 kbps ~ 320 kbps
.wma	ASF	WMA	64 kbps ~ 160 kbps
.aac	AAC	AAC, HE-AAC	192 kbps
.wav	WAV	PCM	1.4 Mbps
.m4a	MKV	AAC	192 kbps
.mka	MKA	PCM	27.648 Mbps
.mka	MKA	Dolby Digital	640 kbps
.mka	MKA	DTS core	1.54 Mbps
.mka	MKA	MPEG	912 kbps
.mka	MKA	MP3	32 kbps ~ 320 kbps
.mka	MKA	WMA	64 kbps ~ 160 kbps
.mka	MKA	AAC, HE-AAC	192 kbps

Video formats

If you have a high definition TV, your home theater allows you to play your video files with:

- Resolution: 1920 x 1080 pixels at
- Frame rate: 6 ~ 30 frames per second.

.avi files in AVI container

Audio codec	Video codec	Bit rate
PCM, Dolby Digital, DTS core, MP3, WMA	DivX 3.11, DivX 4.x, DivX 5.x, DivX 6.x	10 Mbps max
	MPEG 1, MPEG 2	20 Mbps (peak 40 Mbps)
	MPEG 4 ASP	10 Mbps max
	H.264/AVC HP@4.1/4.0; MP@3.2/3.1/3.0	20 Mbps (peak 40 Mbps)

.divx files in AVI container

Audio codec	Video codec	Bit rate
PCM, Dolby Digital, MP3, WMA	DivX 3.11, DivX 4.x, DivX 5.x, DivX 6.x	10 Mbps max
	MPEG 1, MPEG 2	20 Mbps (peak 40 Mbps)
	MPEG 4 ASP	10 Mbps max

.mp4 or .m4v files in MP4 container

Audio codec	Video codec	Bit rate
Dolby Digital, MPEG, MP3, AAC, HE-AAC	MPEG 1, MPEG 2	20 Mbps (peak 40 Mbps)
	MPEG 4 ASP	10 Mbps max
	H.264/AVC HP@4.1/4.0; MP@3.2/3.1/3.0	20 Mbps (peak 40 Mbps)

.mkv files in MKV container

Audio codec	Video codec	Bit rate
PCM, Dolby Digital, DTS core, MPEG, MP3, WMA, AAC, HE-AAC	MPEG 1, MPEG 2	20 Mbps (peak 40 Mbps)
	MPEG 4 ASP	10 Mbps max
	H.264/AVC HP@4.1/4.0; MP@3.2/3.1/3.0	20 Mbps (peak 40 Mbps)

.asf files in ASF container

Audio codec	Video codec	Bit rate
PCM, Dolby Digital, MP3, WMA	MPEG 4 ASP	10 Mbps max
	H.264/AVC HP@4.1/4.0; MP@3.2/3.1/3.0	20 Mbps (peak 40 Mbps)

.mpg and .mpeg files in PS container

Audio codec	Video codec	Bit rate
PCM, DTS core, MPEG, MP3	MPEG 1, MPEG 2	20 Mbps (peak 40 Mbps)
	MPEG 1, MPEG 2	20 Mbps (peak 40 Mbps)

Amplifier

- Total output power: 400W RMS (30% THD)/ 300W RMS (10% THD)
- Frequency response: 20 Hz-20 kHz / ± 3 dB
- Signal-to-noise ratio: > 65 dB (CCIR) / (A-weighted)
- Input sensitivity:
 - AUX: 500 mV
 - Music iLink: 250 mV

Video

- Signal system: PAL / NTSC
- HDMI output: 480i/576i, 480p/576p, 720p, 1080i, 1080p, 1080p24

Audio

- S/PDIF Digital audio input:
 - Coaxial: IEC 60958-3
 - Optical: TOSLINK
- Sampling frequency:
 - MP3: 32 kHz, 44.1 kHz, 48 kHz
 - WMA: 44.1 kHz, 48 kHz
- Constant bit rate:
 - MP3: 32 kbps - 320 kbps
 - WMA: 48 kbps - 192 kbps

Radio

- Tuning range:
 - Europe/China: FM 87.5-108 MHz (50 kHz)
 - Asia Pacific/Russia/Latin America: FM 87.5-108 MHz (50/100 kHz)
- Signal-to-noise ratio: FM 50 dB
- Frequency response: FM 180 Hz-12.5 kHz / ± 3 dB

USB

- Compatibility: Hi-Speed USB (2.0)
- Class support: USB Mass Storage Class (MSC)
- File system: FAT16, FAT32, NTFS
- Maximum memory support: < 160 GB

Main unit

- Output power: 2 x 100W RMS (30% THD)/ 2 x 75W RMS (10% THD)
- Power supply:
 - Europe/China: 220-240 V~, 50 Hz
 - Latin America/Asia Pacific: 110-127 V/220-240 V~, 50-60 Hz
 - Russia/India: 220-240 V~, 50 Hz
- Power consumption: 75 W
- Standby power consumption: ≤ 0.3 W
- Left/Right speakers:
 - Speaker impedance: 6 ohm
 - Speaker drivers: 2 x 64 mm (2.5") woofer + 1 x 25 mm (1") tweeter
 - Frequency response: 150 Hz-20 kHz
- Dimensions (WxHxD): 945 x 178.5 x 96 mm
- Weight: 5.0 kg

Subwoofer

- Output power: 200W RMS (30% THD)/ 150W RMS (10% THD)
- Impedance: 3 ohm
- Speaker drivers: 165 mm (6.5") woofer
- Frequency response: 20 Hz-150 Hz
- Dimensions (WxHxD): 123 x 309 x 369 mm
- Weight: 3.6 kg
- Cable length: 3 m

Wall mount

- Dimensions (WxHxD): 37.6 x 50 x 46.4 mm
- Weight: 0.05 kg/each

Remote control batteries

- 2 x AAA-R03-1.5 V

Laser

- Laser Type (Diode): InGaN/AlGaIn (BD), AlGaInP (DVD/CD)
- Wave length: 405 +7 nm/-7 nm (BD), 655 +10 nm/-10 nm (DVD), 790 +10 nm/-20 nm (CD)
- Output power (Max. ratings): 20 mW (BD), 6 mW (DVD), 7 mW (CD)

11 Troubleshooting



Warning

- Risk of electric shock. Never remove the casing of the product.

To keep the warranty valid, never try to repair the product yourself.

If you have problems using this product, check the following points before you request service. If you still have a problem, register your product and get support at www.philips.com/welcome.

Main unit

The buttons on the home theater do not work.

- Disconnect the home theater from the power supply for a few minutes, then reconnect.

ERROR appears on the display panel.

- Disconnect the home theater from the power supply for a few minutes, then reconnect.

OPEN appears on the display panel.

- Remove disc from the disc compartment.
- If you remove an eight inch disc from the disc compartment, the display remains **OPEN**.
- Make sure that the disc compartment is closed.
- Make sure that no object blocks the disc compartment before closing it.

BLOCKED appears on the display panel.

- Make sure that no object blocks the disc compartment before closing it.

Cannot eject a disc from the disc compartment.

- Press and hold **■ (Stop)** for three seconds to eject.
- In disc source, press **■ (Stop)** and then enter **159** to eject the disc.
- Make sure that the home theater is not in standby mode.
- Disc compartment is blocked. Make sure that no object blocks the disc compartment.
- Close the disc compartment and open it again to eject the disc.

Picture

No picture.

- Make sure that the TV is switched to the correct source for the home theater.

No picture on a TV connected through HDMI.

- Make sure that you use a High Speed HDMI cable to connect the home theater and TV. Some Standard HDMI cables do not display properly for some images, 3D video, or Deep Color.
- Make sure that the HDMI cable is not faulty. If it is faulty, replace it with a new cable.
- Press **⬆️ (Home)** and then **731** on the remote control to restore the default picture resolution.
- Change the HDMI video setting, or wait for 10 seconds for auto recovery (see 'Picture resolution' on page 26).

Disc does not play high-definition video.

- Make sure that the disc contains high-definition video.
- Make sure that the TV supports high-definition video.
- Use an HDMI cable to connect to the TV.

Sound

No sound from home theater speakers.

- Connect the audio cable from your home theater to your TV or other devices. However, you do not need a separate audio connection when:
 - the home theater and TV are connected through an **HDMI ARC** connection, or
 - a device is connected to the **HDMI IN** connector on your home theater.
- Set up the audio for the connected device (see 'Set up audio for connected devices' on page 13).
- Reset your home theater to its factory settings (see 'Apply factory settings' on page 28), and then switch it off and switch on again.
- On your home theater, press **SOURCE** repeatedly to select the correct audio input.

Distorted sound or echo.

- If you play audio from the TV through the home theater, make sure that the TV is muted.

Audio and video are not synchronized.

- 1) Press **⌘ SOUND SETTINGS**. 2) Press the **Navigation buttons** (left/right) to select **AUD SYNC**, and then press **OK**. 3) Press the **Navigation buttons** (up/down) to synchronize the audio with the video.

Play

Cannot play a disc.

- Clean the disc.
- Make sure that the disc compartment is closed.
- Make sure that the home theater supports the type of disc (see 'Media formats' on page 31).
- Make sure that the home theater supports the region code of the disc (see 'Region codes' on page 31).
- If the disc is a DVD±RW or DVD±R disc, make sure that it is finalized.

Cannot play a DivX file.

- Make sure that the DivX file is encoded according to the 'Home Theater Profile' with the DivX encoder.
- Make sure that the DivX file is complete.

DivX or RMVB/RM subtitles do not display correctly.

- Make sure that the subtitle file name is the same as the movie file name (see 'Subtitles' on page 20).
- Select the correct character set: 1) Press **⌘ OPTIONS**. 2) Select **[Character Set]**. 3) Select the supported character set. 4) Press **OK**.

Cannot read the contents of a USB storage device.

- Make sure that the format of the USB storage device is compatible with the home theater.
- Make sure that the file system on the USB storage device is supported by the home theater.

'No entry' or 'x' sign appears on the TV.

- The operation is not possible.

EasyLink does not work.

- Make sure that the home theater is connected to a Philips brand EasyLink TV, and the EasyLink option is on (see 'EasyLink' on page 25).

When you switch on the TV, the home theater automatically switches on.

- This behavior is normal when you are using Philips EasyLink (HDMI-CEC). To make the home theater work independently, switch off EasyLink.

Cannot access BD-Live features.

- Make sure that the home theater is connected to the network. Use a wired network connection (see 'Wired connection' on page 14) or wireless network connection (see 'Wireless connection' on page 15).
- Make sure that the network is set up. Use a wired network installation (see 'Set up the wired network' on page 14) or wireless network installation (see 'Set up the wireless network' on page 15).
- Make sure that the Blu-ray disc supports BD-Live features.
- Clear memory storage (see 'Clear memory' on page 18).

Cannot play video or photos from an iPod or iPhone on the TV.

- Browse and select videos and photos from the iPod or iPhone screen, and play them on your TV.
- Make sure that the iPod or iPhone software has not been tampered with or illegally modified.

Cannot view pictures from an iPod or iPhone on the TV.

- Connect a yellow composite cable to the iPod dock and the TV.
- Switch the TV to the **AV/VIDEO** source (corresponding to the yellow composite cable).
- Press the play button on the iPod or iPhone to start a slideshow.
- Make sure that the iPod or iPhone software has not been tampered with or illegally modified.

TV screen is black when you play a Blu-ray 3D video or a DivX copy protected video.

- Make sure that the home theater is connected to the TV through an HDMI cable.
- Switch to the correct HDMI source on the TV.

Network

Wireless network distorted or not found.

- Make sure that the wireless network is not disturbed by microwave ovens, DECT phones, or other neighboring Wi-Fi devices.
- Place the wireless router and the home theater within five meters of each other.
- Use a USB extension cable to connect the Wi-Fi dongle to the home theater.
- If the wireless network does not work properly, try a wired network installation (see 'Set up the wired network' on page 14).

12 Language code

Abkhazian	6566	Inupiaq	7375	Pushto	8083
Afar	6565	Irish	7165	Russian	8285
Afrikaans	6570	Íslenska	7383	Quechua	8185
Amharic	6577	Italiano	7384	Raeto-Romance	8277
Arabic	6582	Ivrit	7269	Romanian	8279
Armenian	7289	Japanese	7465	Rundi	8278
Assamese	6583	Javanese	7486	Samoan	8377
Avestan	6569	Kalaallisut	7576	Sango	8371
Aymara	6589	Kannada	7578	Sanskrit	8365
Azerbaijani	6590	Kashmiri	7583	Sardinian	8367
Bahasa Melayu	7783	Kazakh	7575	Serbian	8382
Bashkir	6665	Kernowek	7587	Shona	8378
Belarusian	6669	Khmer	7577	Shqip	8381
Bengali	6678	Kinyarwanda	8287	Sindhi	8368
Bihari	6672	Kirghiz	7589	Sinhalese	8373
Bislama	6673	Komi	7586	Slovensky	8373
Bokmål, Norwegian	7866	Korean	7579	Slovenian	8376
Bosanski	6683	Kuanyama; Kwanyama	7574	Somali	8379
Brezhoneg	6682	Kurdish	7585	Sotho; Southern	8384
Bulgarian	6671	Lao	7679	South Ndebele	7882
Burmese	7789	Latina	7665	Sundanese	8385
Castellano, Español	6983	Latvian	7686	Suomi	7073
Catalán	6765	Letzeburgesch;	7666	Swahili	8387
Chamorro	6772	Limbungan; Limburger	7673	Swati	8383
Chechen	6769	Lingala	7678	Svenska	8386
Chewa; Chichewa; Nyanja	7889	Lithuanian	7684	Tagalog	8476
中文	9072	Luxembourgish;	7666	Tahitian	8489
Chuang; Zhuang	9065	Macedonian	7775	Tajik	8471
Church Slavic; Slavonic	6785	Malagasy	7771	Tamil	8465
Chuvash	6786	Magyar	7285	Tatar	8484
Corsican	6779	Malayalam	7776	Telugu	8469
Česky	6783	Maltese	7784	Thai	8472
Dansk	6865	Manx	7186	Tibetan	6679
Deutsch	6869	Maori	7773	Tigrinya	8473
Dzongkha	6890	Marathi	7782	Tonga (Tonga Islands)	8479
English	6978	Marshallese	7772	Tsonga	8483
Esperanto	6979	Moldavian	7779	Tswana	8478
Estonian	6984	Mongolian	7778	Türkçe	8482
Euskara	6985	Nauru	7865	Türkmen	8475
Ελληνικά	6976	Navaho; Navajo	7886	Twí	8487
Faroese	7079	Ndebele, North	7868	Uighur	8571
Français	7082	Ndebele, South	7882	Ukrainian	8575
Frysk	7089	Ndonga	7871	Urdu	8582
Fijian	7074	Nederlands	7876	Uzbek	8590
Gaelic; Scottish Gaelic	7168	Nepali	7869	Vietnamese	8673
Gallegan	7176	Norsk	7879	Volapuk	8679
Georgian	7565	Northern Sami	8369	Walloon	8765
Gikuyu; Kikuyu	7573	North Ndebele	7868	Welsh	6789
Guarani	7178	Norwegian Nynorsk;	7878	Wolof	8779
Gujarati	7185	Occitan; Provençal	7967	Xhosa	8872
Hausa	7265	Old Bulgarian; Old Slavonic	6785	Yiddish	8973
Herero	7290	Oriya	7982	Yoruba	8979
Hindi	7273	Oromo	7977	Zulu	9085
Hiri Motu	7279	Ossetian; Ossetic	7983		
Hrwatski	6779	Pali	8073		
Ido	7379	Panjabi	8065		
Interlingua (International)	7365	Persian	7065		
Interlingue	7365	Polski	8076		
Inuktitut	7385	Português	8084		

13 Index

A

advanced	
BD-Live security	19
restore default settings	28
software update	30
software version	30
amplifier	33
audio	
formats	32
HDMI audio	26
input mapping	25
language	27
night mode	27
options	20
predefined modes	16
quality	13
settings	26
source	13
specifications	33
subwoofer volume	10
audio formats	32
audio input mapping	25
audio language	27
audio options	20
auto standby	28

B

BD-Live	
BD-Live	18
clear memory	18
disable	19
troubleshooting	35
Blu-ray	17
Bonus View	18
brightness	28
browse	
disc	17
from iPod or iPhone	23
USB storage device	19

C

care	
environment	7
product	7
character set	20
close disc compartment	8
compliance	4
computer	
connect to	14

connect

audio (analog cable)	13
audio (coaxial cable - digital)	13
audio (optical cable - digital)	13
audio from TV and other devices	13
home network	14
speakers	10
subwoofer	10
TV (Composite)	12
TV (HDMI ARC)	11
TV (HDMI)	12

connectors

back connectors - center	11
back connectors - left	10
back connectors - right	11
side connectors	10

control

disc play	17
Easylink (HDMI-CEC)	9
main unit	8
parental control	27
radio	22
USB storage device	19

copyright protection

4

D

disable

BD-Live	19
HDMI-CEC	25

discs

audio	20
audio language	27
BD-Live	18
Bonus View	18
control buttons	17
DivX	20
menu language	27
options	20
picture	21
picture-in-picture	18
play	17
subtitle	27
synchronize picture and sound	18
time search	21
titles	21

display panel

8

DivX

character set	20
subtitles	20
VOD code	20

dock your iPod or iPhone

23

E

EasyLink (HDMI-CEC)	
audio input mapping	25
control buttons	9
one-touch play	25
one-touch standby	25
system audio control	25
enable	
auto standby	28
BD-Live	19
HDMI-CEC	25
screen saver	28
energy	
auto standby	28
brightness	28
screen saver	28
sleep timer	28

F

factory settings	28
FAQs	4
FM antenna	10
format	33

H

HDMI	
audio	26
Deep color	26
TV (HDMI ARC)	11
video	26
HDMI-CEC	25
help	4

I

Internet	
BD-Live	18
connect to	14
Picasa web albums	24
update software	30
YouTube videos	23
iPod and iPhone	
dock your iPod or iPhone	23
music	23
Philips dock	10
video and slideshow	23

L

language	
2nd audio language	18
2nd subtitle language	18
audio	27
disc menu	27
language code	37
onscreen menu	27
subtitle	27
legal notices	4

M

main unit	
overview	8
specifications	33
troubleshooting	34
mains fuse (UK only)	4
media formats	31
MP3	
play	23
multimedia content	
from disc	17
from USB storage device	19

N

network	
home network	14
settings	14
troubleshooting	36
update software	30
Wi-Fi	15
wired connection	14
wireless connection	15
night mode	27

O

one-touch play	25
one-touch standby	25
online video stores	
troubleshooting	35
open disc compartment	8
open source software	5
options	
audio	20
picture	21
video	21
overview	
connectors	10
HDMI-CEC	25
main unit	8
remote control	8
settings	26

P

parental control	
password	27
ratings	28
password	27
PC	
connect to	14
Philips Easylink	25
Picasa web albums	24
picture	
options	21
rotate	21
settings	26
slideshows	21
troubleshooting	35
zoom	21
picture options	21
picture-in-picture	
2nd audio language	18
2nd subtitle language	18
play	
discs	17
DivX	20
iPod and iPhone	23
MP3	23
radio	33
troubleshooting	35
USB	19
position	
connectors	10
position	10
power options	
auto standby	28
brightness	28
screen saver	28
sleep timer	28
preference	
audio	26
auto standby	28
change password	27
disc menu	27
display panel	28
menu language	27
parental control	27
screen saver	28
sleep timer	28
subtitle	27
product specifications	31

R

radio	
control buttons	22
FM antenna	10
listen to radio	22
specifications	33
tune stations	22
tuning grid	22
ratings	28
recycling	7
region codes	31
remote control	
batteries	34
overview	8
rent video	
troubleshooting	35
repeat	20

S

safety	
disposal	7
use of the product	6
screen saver	28
settings	
audio	26
default	28
disc language	27
HDMI audio	26
HDMI video	26
HDMI-CEC	25
menu language	27
parental rating	
password	27
ratings	28
password	27
picture	26
power	28
ratings	28
resolution	26
restore	28
screen saver	28
sleep timer	28
subtitle language	27
video	26
side connectors	10
sleep timer	28
slideshows	
animation	21
duration	21
musical	22
picture	21
software	
check current version	30
update	30

sound	
predefined sound mode	16
surround sound	16
synchronize picture and sound	18
troubleshooting	35
speaker setup	
predefined modes	16
settings	26
speakers	
connect	10
surround sound	16
specifications	31
specifications	33
standby	28
subtitle	
character set	20
language	27
subwoofer	
specifications	34
subwoofer volume	10
synchronize picture and sound	18
system audio control	25

T	
time search	21
titles	21
trademarks	5
troubleshooting	
connection	34
main unit	34
network	36
picture	35
play	35
serial number	4
sound	35
tuning grid	22
tutorials	4

U	
update software	
check current version	30
from a USB storage device	30
from network	30
USB storage device	
control buttons	19
options	20
play	19
specifications	33
update software	30

V	
video	
HDMI deep color	26
picture resolution	26
picture settings	26
specifications	33
synchronize picture and sound	18
video and slideshow	23
VOD code for DivX	20
video formats	33
video options	21
VOD code for DivX	20

W	
wired network	
settings	14
wired connection	14
wireless network	
settings	15
Wi-Fi	15
Wi-Fi dongle	15
wireless connection	15

Y	
YouTube videos	23

WARRANTY

This Philips Home Theatre System is covered under warranty against any defect arising out of faulty or defective material or workmanship for a period of 12 Months from the date of purchase.

Should a defect develop during the period of warranty, Philips Electronics India Limited undertakes to repair the apparatus free of charge through an Authorised Philips service centre. If the purchaser shifts his residence to other town, the warranty will be valid at the nearest Authorised Philips service center.

The Warranty is not valid in case:

- Proof of purchase is not accompanied with this warranty form
- This warranty form is not completed immediately after purchase
- The Apparatus is not used according to this manual
- Defects are caused by improper or reckless use
- Any repair work are done by person other than Authorised Philips service center
- Any modification or alteration of any nature are made in the apparatus
- The serial number is tampered
- Defects due to causes beyond control like lightning, abnormal voltage, Acts of God or while in transit to the purchaser's residence

Maintenance Tips for your Home Theatre System:

- Always keep a Disc loaded in your Home Theatre System tray.
- Keep the home theatre away from the dusty areas. Keep it covered with a dust cover.
- Clean your Home Theatre System Lens after every 20 Discs played.
 - Use the 2 brush Philips DVD Lens Cleaner SVC2520 for best results.
- Clean the CDs / VCD / DVD / MP3 CD before inserting in your Home Theatre System

Philips Electronics India Limited,

Registered Office: 7, Justice Chandra Madhab Road, Kolkata – 700 020

For Any Sales & Service Enquiry:

Email us at customercare.india@philips.com

Call us on Tel No. 1800 102 2929 *
1860 180 1111 *
0124- 429 1111*

*Standard Call rates apply for the calls made to above telephone lines

Pls fill the following for your reference and warranty validity:-

- Serial No: _____
- Bill No. & Date of Purchase: _____
- Purchaser's Name: _____
- Location & Tel No.: _____
- Dealer's Name: _____
- Location & Tel No: _____
- Dealer's Stamp & Sign: _____

