

Register your product and get support at
www.philips.com/welcome



EN User manual

PHILIPS

Contents

1 Important	4
Notice	4
2 Your car audio system	6
Introduction	6
What's in the box	6
Install the car audio	6
Connect	7
Connect parking brake cable and reverse driving cable to a rear view backup camera	7
Mount into dashboard	8
Install remote control battery	9
3 Get started	10
Turn on and turn off	10
Adjust volume	10
Mute	10
4 Play	11
Load and eject discs	11
Insert and remove USB device	12
Insert and remove SD/MMC card	12
Skip/search	12
Intro play	13
Repeat play	13
Random play	14
Select Language	14
Dynamic Bass Boost	14
MAX sound	15
Zoom	15
5 Radio	16
Select tuner sensitivity	16
Manual tune to a radio station	16
Auto tune to a radio station	17
Store stations manually	17
Store stations automatically	17
Select the preset station	17
Select stereo or mono broadcasting	18

6 System settings	19
Adjust general settings	19
Select DVD video settings	19
Select language settings	20
Adjust radio settings	20
7 Other settings	21
Select equalizer settings	21
Control zone settings	21
Other sound settings	22
Select Video Output format	22
Turn on or off the screen backlight	22
Reset	23
Replace fuse	23
8 Product information	24
General	24
Disc player	24
Tuner	24
LCD	24
Compatible USB devices	24
Supported formats	24
Unsupported formats	25
9 Troubleshooting	26

1 Important

- Read and understand all instructions before you use the apparatus. If damage is caused by failure to follow instructions, the warranty does not apply.
- Use of controls or adjustments or performance of procedures other than herein may result in hazardous radiation exposure or other unsafe operation.
- This unit is designed for negative ground (earth) 12 V DC operation only.
- To reduce the risk of traffic accident, do not watch video during driving.
- To ensure safe driving, adjust the volume to a safe and comfortable level.
- Improper fuses can cause damage or fire. When you need to change the fuse, consult a professional.
- Use only the supplied mounting hardware for a safe and secure installation.
- To avoid short circuit, do not expose the apparatus, remote control or remote control batteries to rain or water.
- Never insert objects into the ventilation slots or other openings on the apparatus.
- Never place any objects other than discs into the disc tray/slot.
- Visible and invisible laser radiation when open. Avoid exposure to beam.
- Risk of damage to the screen! Never touch, push, rub or strike the screen with any object.
- Never use solvents such as benzene, thinner, cleaners available commercially, or anti-static sprays intended for discs.
- Clean the apparatus with soft, damp cloth. Never use substances such as alcohol, chemicals or household cleaners on the apparatus.

Notice



**Be responsible
Respect copyrights**

The making of unauthorized copies of copy-protected material, including computer programs, files, broadcasts and sound recordings, may be an infringement of copyrights and constitute a criminal offence. This equipment should not be used for such purposes.



"DivX, DivX" Certified, and associated logos are trademarks of DivX, Inc. and are used under license.

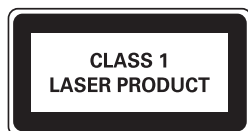
Official DivX® Certified product. Plays all versions of DivX® video (including DivX® 6) with standard playback of DivX® media files.



Manufactured under license from Dolby Laboratories.

"Dolby" and the double-D symbol are trademarks of Dolby Laboratories. Other trademarks and trade names are those of their respective owners.

This apparatus includes this label:



Environmental information

All unnecessary packaging has been omitted. We have tried to make the packaging easy to separate into three materials: cardboard (box), polystyrene foam (buffer) and polyethylene (bags, protective foam sheet.)

Your system consists of materials which can be recycled and reused if disassembled by

a specialized company. Please observe the local regulations regarding the disposal of packaging materials, exhausted batteries and old equipment.

Any changes or modifications made to this device that are not expressly approved by Philips Consumer Lifestyle may void the user's authority to operate the equipment.

2010 © Koninklijke Philips Electronics N.V. All rights reserved.

Specifications are subject to change without notice. Trademarks are the property of Koninklijke Philips Electronics N.V. or their respective owners. Philips reserves the right to change products at any time without being obliged to adjust earlier supplies accordingly.

2 Your car audio system

Congratulations on your purchase, and welcome to Philips!

To fully benefit from the support that Philips offers, register your product at www.Philips.com/welcome.

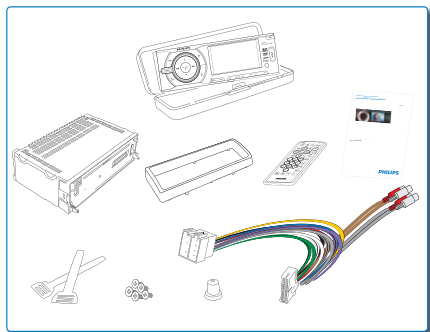
Read this user manual carefully before you install and use the unit. Save it for future reference.

Introduction

With the in-car audio system, you can enjoy your drive while you listen to:

- FM or AM (MW) radio
- Audio from a USB drive, a SD/SDHC card, external devices.
- Music CDs
- DVD and VCD video

What's in the box



! Caution

- Use the controls only as stated in this user manual.

Always follow the instructions in this chapter in sequence.

If you contact Philips, you will be asked for the model and serial number of your apparatus. The model number and serial number are on the bottom of your apparatus. Write the numbers here:

Model No. _____

Serial No. _____

Install the car audio

These instructions are for a typical installation. However, if your car has different requirements, make the corresponding adjustment. If you have any questions regarding installation kits, consult your Philips car audio dealer.



Caution

- This unit is designed for negative ground (earth) 12 V DC operation only.
- Always install this unit in the car dashboard. Other locations can be dangerous as the rear of the unit heats up during use.
- To avoid short-circuit: before you connect, ensure that the ignition is off.
- Ensure that you connect the yellow and red power supply leads after all other leads are connected.
- Ensure that all loose leads are insulated with electrical tape.
- Ensure that the leads do not get caught under screws or parts that will move (e.g. seat rail).
- Ensure that all ground (earth) leads are run to a common ground (earth) point.
- Use only the supplied mounting hardware for a safe and secure installation.
- Improper fuses can cause damage or fire. When you need to change the fuse, consult a professional.

Note on the power supply lead (yellow)

- When you connect other devices to this apparatus, ensure that the rating of the car circuit is higher than the total fuse value of all the connected devices.

Notes on speaker connection

- Never connect speaker wires to the metal body or chassis of the car.
- Never connect speaker wires with stripes to one another.

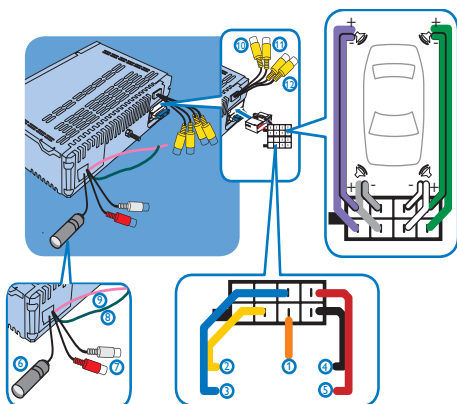
Connect

! Caution

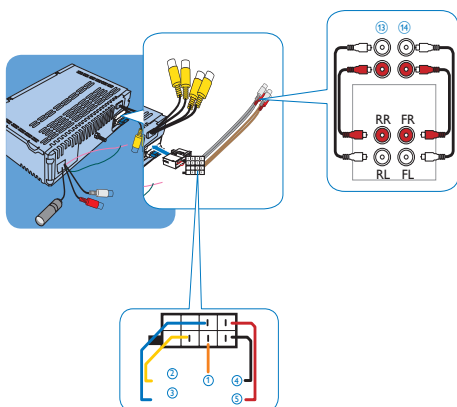
- Make sure that all bare wires are insulated with electrical tape.

≡ Note

- As different cars have different requirements, you might need to connect CED229 differently from the user manual's instructions. In that case, consult a professional mechanic to connect.



OR



①	Illumination switch
②	To the +12V car battery which is energized at all time
③	Motor/electric antenna relay control lead/ Amplifier relay control lead
④	Ground
⑤	Ignition Key +12V DC when ON/ ACC
⑥	Antenna
⑦	Aux-In
⑧	Parking Switch Cable
⑨	Reverse Driving Cable
⑩	Video-In
⑪	Camera-In
⑫	Video-Out 1 and 2
⑬	Rear line-Out
⑭	Front line-Out

Connect parking brake cable and reverse driving cable to a rear view backup camera

≡ Note

- Check your local driving regulations on whether it is legally required to install the rear view backup camera. These connections require a professional mechanic to install.

This car audio video system allows you to connect to the rear view backup camera. You can view the things that happens behind your car in the display, especially you are driving a big vehicle. This helps protecting your bumper and anything it might contact.

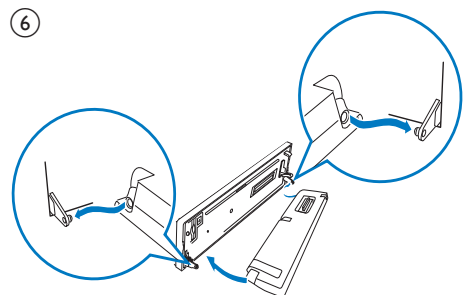
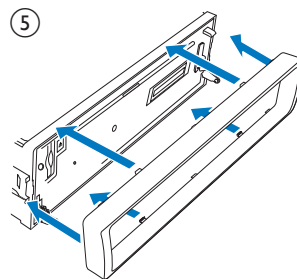
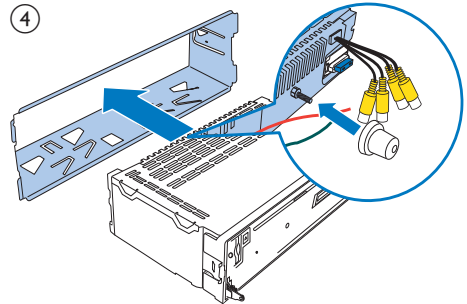
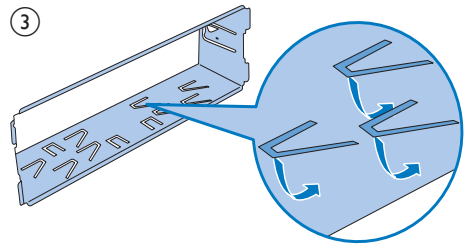
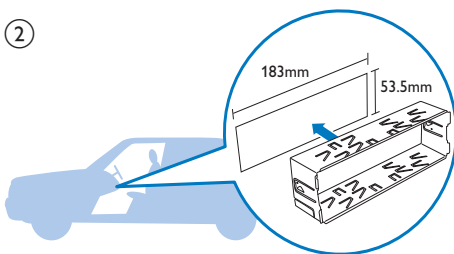
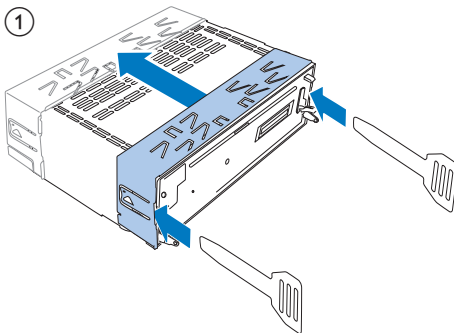
Mount into dashboard

Note

- For proper operation of the DVD player, the chassis must be mounted within 20 degree horizontal. Ensure that the unit is mounted within this limitation.

Caution

- Keep the connection of the car battery if there is an on-board drive or navigation computer. Otherwise, the computer may lost its memory.
- To avoid short circuit, ensure the bare wires do not touch each other and disconnect the negative terminal of the car battery.

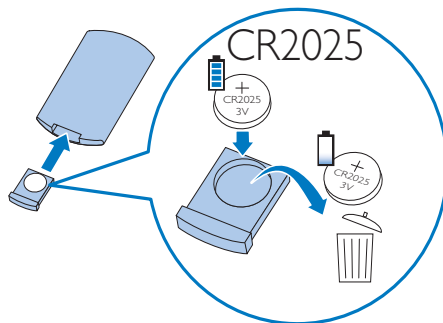


- ⑦ Reconnect the negative terminal of the car battery.

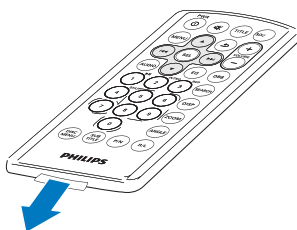
Install remote control battery

! Caution

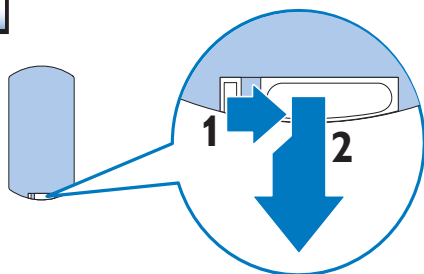
- Risk of explosion! Keep batteries away from heat, sunshine or fire. Never discard batteries in fire.
- Risk of decreased battery life! Never mix different brands or types of batteries.
- Risk of product damage! When the remote control is not used for long periods, remove the batteries.
- Perchlorate Material - special handling may apply. See www.dtsc.ca.gov/hazardouswaste/perchlorate.



For first time use



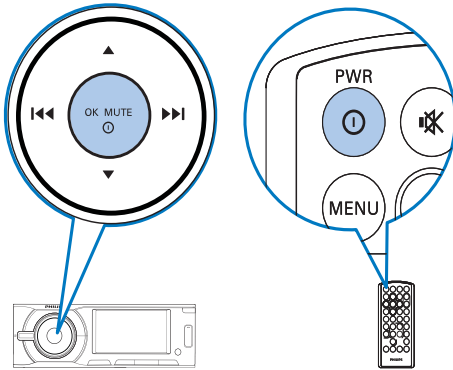
To replace the remote control battery



3 Get started

Turn on and turn off

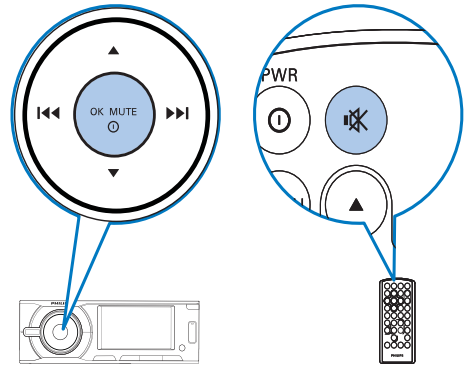
Turn On



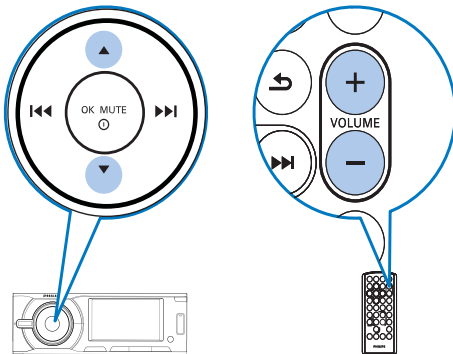
Turn Off

Press and hold the same power button for 3 seconds.

Mute



Adjust volume



4 Play

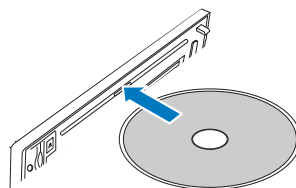
Make sure that the disc or device contains playable music or video.

Note

- For CDs recorded in multiple sessions, only the first session is played.
- Does not support MP3 Pro audio format.
- It may not support and display special characters track name (ID3) or album name properly.
- It cannot play some WMA is protected by Digital Rights Management (DRM).
- The system does not display or play the folders or files that exceed the supporting limit.

Warning

- To reduce the risk of traffic accident, do not watch video during driving.



- 3 To remove the disc, press the **▲** button.
↳ When the disc is ejected, the unit switches to TUNER mode automatically.

- 4 Close the front panel.
↳ After a few seconds, the screen illuminates.

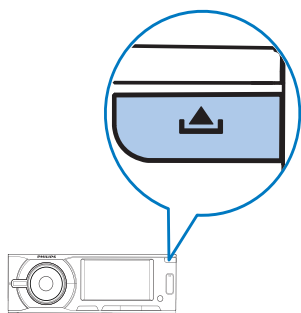
- For video discs, press **◀◀** or **▶▶** to select an item, then press **OK/MUTE** to start playing.
- For discs that contain MP3s, WMAs, or JPEGs, press **◀◀** or **▶▶** to select a folder, track or picture. Press **OK/MUTE** to start playing.

Tip

- If the disc is blocked in the disc compartment, press and hold the **▲** button until the disc comes out.

Load and eject discs

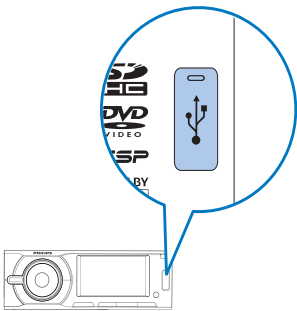
- 1 Press **▲** to open the front panel.



- 2 Insert the disc into the disc slot with label side facing up.
↳ Play resumes from the point where it was last stopped.

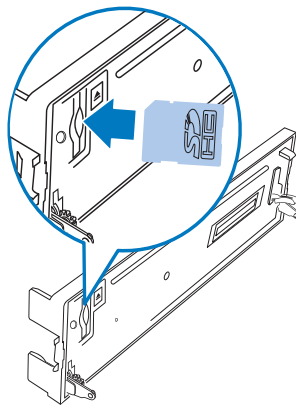
Insert and remove USB device

- 1 Slide down the USB socket cover.



- 2 Insert the USB device into the USB socket.
↳ The unit starts playing from the USB device automatically.
- 3 To remove the USB device, press **OK/MUTE** to turn off the unit.
- 4 Remove the USB device.

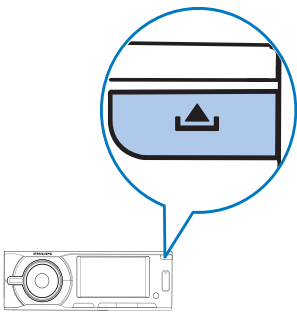
↳ The unit starts playing from the SD/SDHC card automatically.



- 3 To remove the SD or SDHC card, press **OK/MUTE** to turn off the unit.
- 4 Press the card until you hear a click sound.
↳ The card is now disengaged.

Insert and remove SD/MMC card

- 1 Press **▲** to open the front panel.

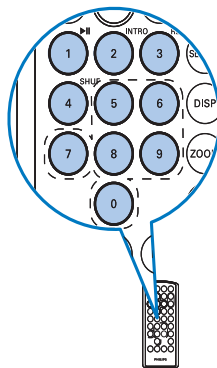


- 2 Insert SD or SDHC card into the card slot.

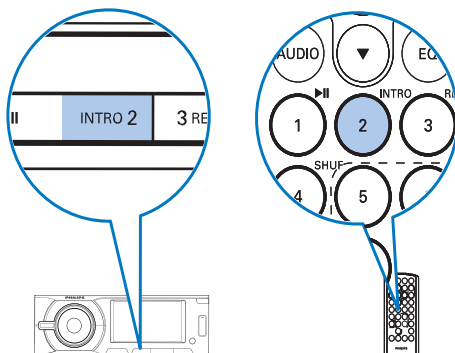
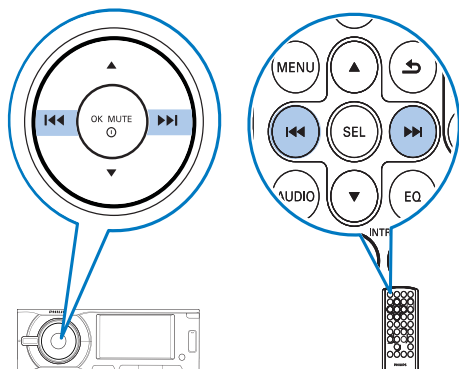
Skip/search

During video and audio disc play

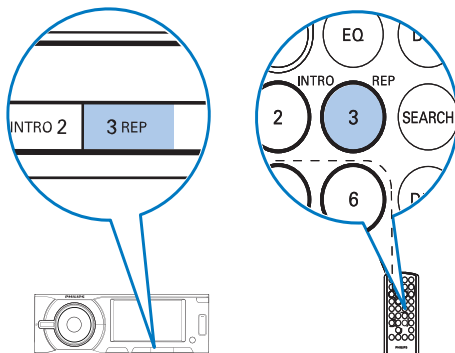
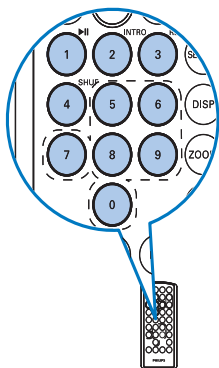
- To skip to a specified chapter or track, press the numeric buttons.



- To skip to the previous or next chapter or track, press **◀◀** or **▶▶**.



- To search backward or forward quickly, press **⏮** or **⏭** for 3 seconds.
 - Press **⏸** to resume normal play.
- During MP3/WMA play**
- To select a track, press **▲** or **▼** to select a folder. Press **⏮** or **⏭** to skip to previous or next track.
 - To skip to a specified chapter or track, press the numeric buttons.



- **[REP ONE]**: play the current chapter or track repeatedly.
- **[REP DIR]**: play the current folder repeatedly.
- **[REP ALL]**: play all chapters in the title or all tracks repeatedly.
- **[REP CANCEL]**: cancel repeat play.

Intro play

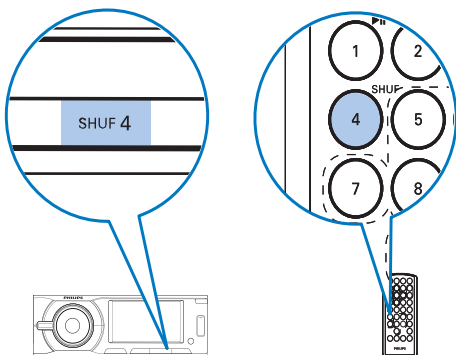
This feature plays the first 10 seconds of each audio track.

Press the **INTRO 2** button to select **[INTRO ON]** or **[INTRO OFF]**.

Random play

There are 3 standard modes of random play for audio and MP3/WMA.

Press the **SHUF 4** button repeatedly to select.



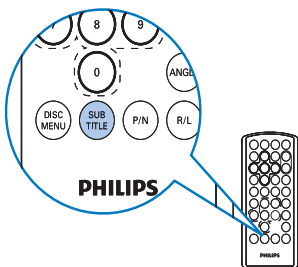
- **[SHUFFLE ALL]**: start random play for all tracks.
- **[SHUFFLE DIR]**: start random play in current folder.
- **[SHUFFLE OFF]**: cancel random play.

Select Language

Subtitle

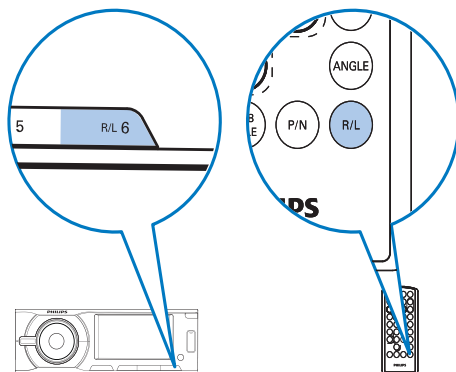
You can select the subtitle language if the DVD or DivX discs contain two or more subtitle languages.

During play, press **SUBTITLE** on the remote control repeatedly until the language is selected.



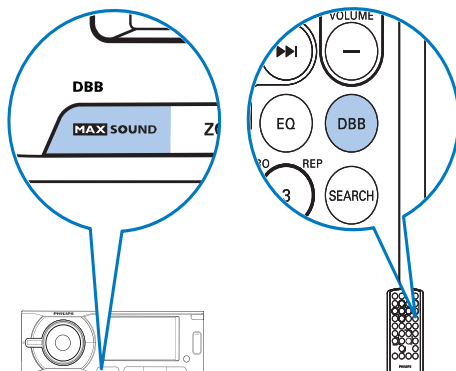
Audio

You can select the audio language if the video discs contain two or more audio channels. During play, press **R/L** on the remote control repeatedly until the language is selected.



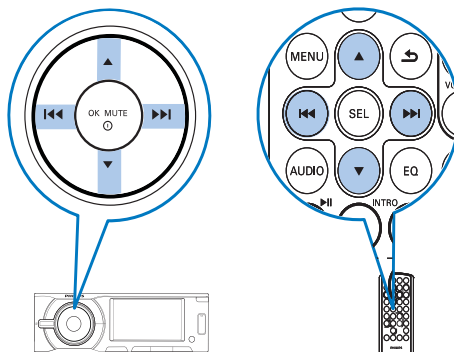
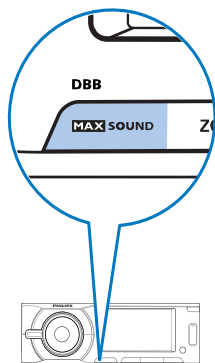
Dynamic Bass Boost

- 1 Press **MAX SOUND/DBB** on the car audio system for 3 seconds or press **DBB** on the remote control.
 - ↳ **[DBB ON]**: The Dynamic Bass Boost (DBB) function is on.
 - ↳ **[DBB OFF]**: The DBB function is off.
- 2 Press **DBB** again to change the DBB setting.



MAX sound

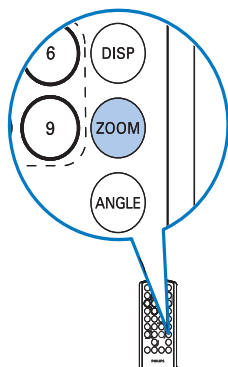
- 1 Press **MAX SOUND** / **DBB** to produce an instant boost in bass and maximize volume.
- 2 Press **MAX SOUND** / **DBB** again to turn off.



Zoom

To zoom in and out of video images and pictures:

- 1 Press **ZOOM** on the remote control repeatedly.
↳ **[ZOOM]** is displayed.



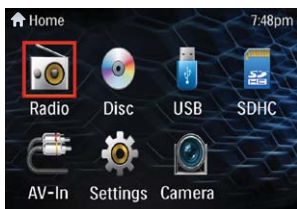
- 2 Press the navigation buttons to pan across the display.

5 Radio

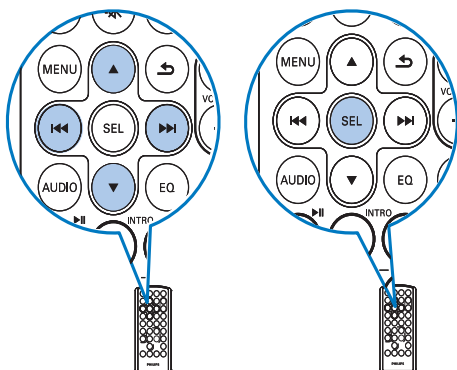
Select tuner sensitivity

Before you start to search for radio station, you can select tuner sensitivity.

- 1 Press **MENU**.
↳ The main menu is displayed.



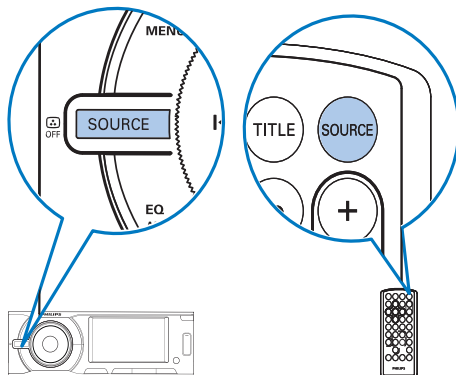
- 2 Press the navigation buttons to select **[RADIO]**, then press **SEL**.



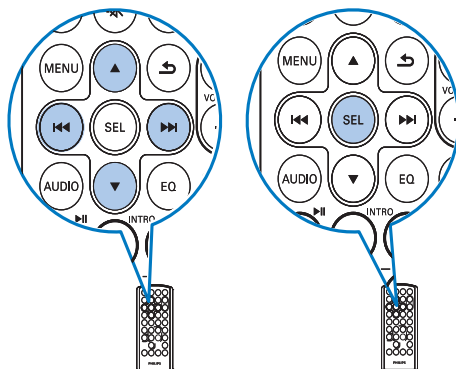
- 3 Press **▶▶** to select **[LOC/DX]**, then press **▶▶**.
 - **[LOC]**: only broadcast local stations with strong signals.
 - **[DX]**: broadcast any stations with strong and weak signals.
- 4 Press **▲** or **▼** buttons to select **[LOC]** or **[DX]**, then press **SEL** to confirm.

Manual tune to a radio station

- 1 Press **SOURCE**.



- 2 Press the navigation buttons to select **[RADIO]**, then press **SEL**.



- 3 Press and hold **▲** or **▼** to select band.
↳ **[FM]** or **[AM]** is display.
- 4 Press **◀◀** or **▶▶** to tune to a radio station manually.



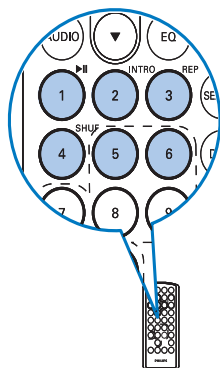
Auto tune to a radio station

In [RADIO] mode, press and hold ◀◀ or ▶▶ for 3 seconds.

Store stations manually

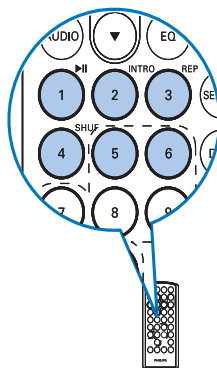
You can store up to 6 stations in each band.

- 1 Tune to the station which you want to store.
- 2 Press and hold the numeric buttons (1 to 6) for 3 seconds.



Select the preset station

- 1 Press and hold ▲ or ▼ to select band.
↳ [FM] or [AM] is display.
- 2 Press the numeric button (1 to 6) to select the preset station.
 - You may also press ▲ or ▼ to select the preset station.



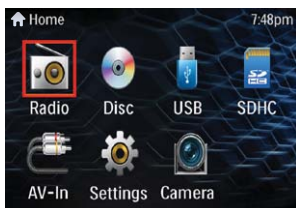
Store stations automatically

You can store up to 6 stations in each band.

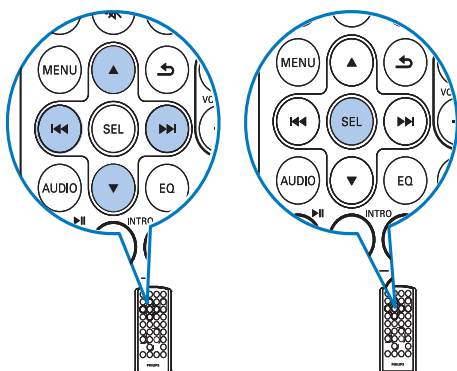
- 1 Press SEARCH.
↳ The six strongest stations of the selected band are saved in preset channels 1-6 automatically.

Select stereo or mono broadcasting

- 1 Press **MENU**.
↳ The main menu is displayed.



- 2 Press the navigation buttons to select **[RADIO]**, then press **SEL**.



- 3 Press **▶▶** to select **[STEREO/MONO]**, then press **▶▶**.
- 4 Press **▲** or **▼** buttons to select **[STEREO]**, **[MIX MONO]**, **[MONO L]**, or **[MONO R]**, then press **SEL** to confirm.

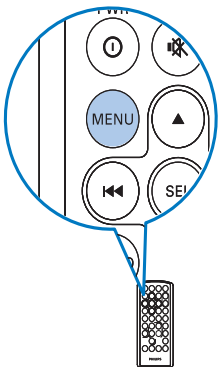
6 System settings


Within system settings, there are:

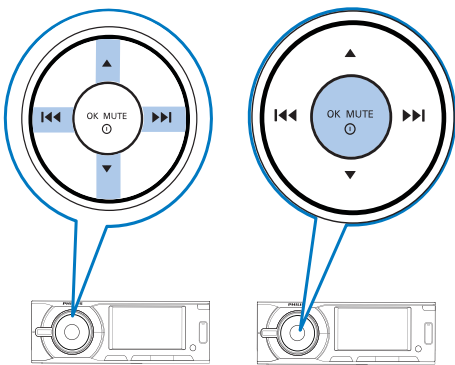
- General settings,
- DVD settings,
- Language settings, and
- Radio settings.

Adjust general settings

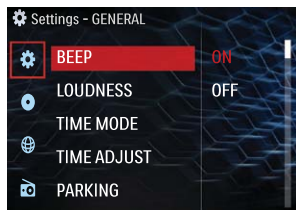
- 1 Press MENU.



- 2 Press the navigation buttons to select [SETTINGS], the press  to confirm.




↳ The settings menu is displayed

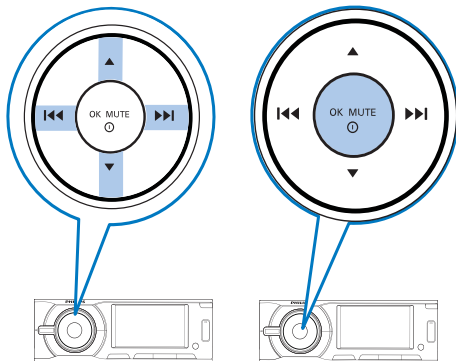


- 3 Press  or  buttons to select the general setting .
- 4 Press , and then  or  to select the sub-menus.

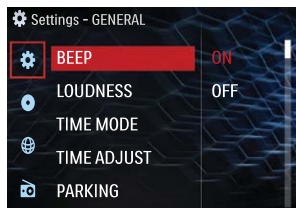
Select DVD video settings


You can adjust the settings for the video output and the screen display.

- 1 Press MENU.
- 2 Press the navigation buttons to select [SETTINGS], the press  to confirm.




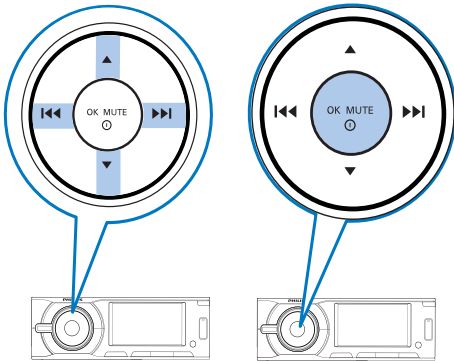
↳ The general settings menu is displayed



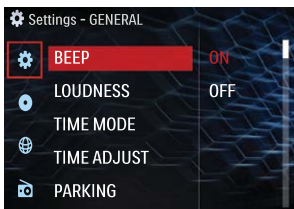
- 3 Press ▲ or ▼ buttons to select the DVD setting .
- 4 Press ►►, and then ▲ or ▼ button to select the sub-menus.


Select language settings

- 1 Press MENU.
- 2 Press the navigation buttons to select [SETTINGS], the press  to confirm.




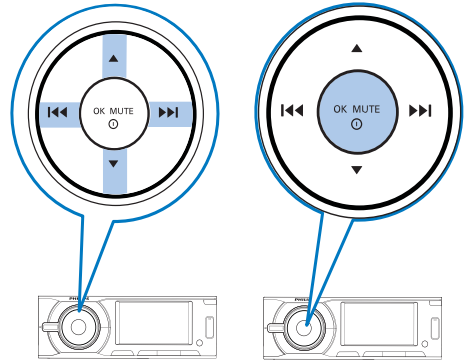
↳ The settings menu is displayed



- 3 Press ▲ or ▼ buttons to select the language setting .
- 4 Press ►►, and then ▲ or ▼ button to adjust.


Adjust radio settings

- 1 Press MENU.
- 2 Press the navigation buttons to select [SETTINGS], the press  to confirm.



↳ The settings menu is displayed



- 3 Press ▲ or ▼ buttons to select the radio setting .
- 4 Press ►►, and then ▲ or ▼ button to select [LOC/DX] or [STEREO/MONO].

7 Other settings

Select equalizer settings

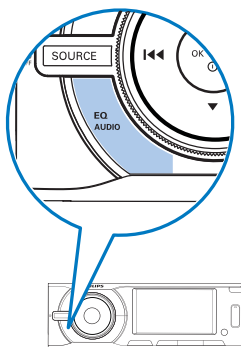
You can select preset equalizer settings, and they are:

- [USER]
- [TECHNO]
- [ROCK]
- [CLASSIC]
- [JAZZ]
- [OPTIMAL]
- [FLAT]
- [POP]

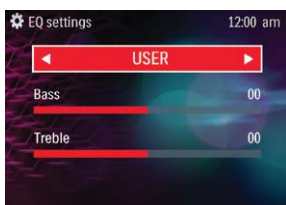
Note

- Only when you select [USER], then you can adjust the sound value of [BASS] and [TREBLE] .

- 1 Press EQ/AUDIO.



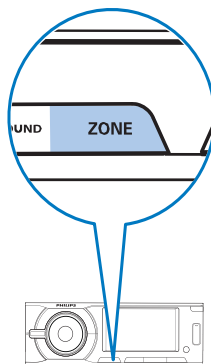
- ↳ The current equalizer setting is displayed.



- 2 Press **◀◀** or **▶▶** to select one of the preset equalizer settings.
- 3 You can also select [USER], and then press **OK/MUTE** to confirm.
- 4 Then, press **▲** or **▼** to select of [BASS] and [TREBLE].
- 5 Press **◀◀** or **▶▶** to adjust the values.
- 6 Press **↶** to exit.

Control zone settings

- 1 Press ZONE.



- ↳ The current zone setting is displayed.



- 2 Press **◀◀** or **▶▶** to select one of the preset zone settings:
 - [ALL] - all speakers are in same volume level.
 - [LEFT] - front left speaker is louder than the rest of the speakers.
 - [RIGHT] - front right speaker is louder than the rest of the speakers.

- **[FRONT]** - the front speakers are louder than the rear speakers.

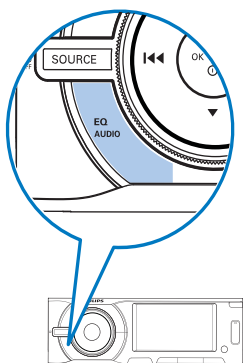
3 Press  to confirm.

4 Press  to exit.

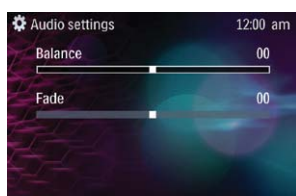
Other sound settings



You can adjust the front and rear speaker balance, and the left and right speaker balance.

1 Press EQ/AUDIO for 3 seconds.






→ The following options are displayed.

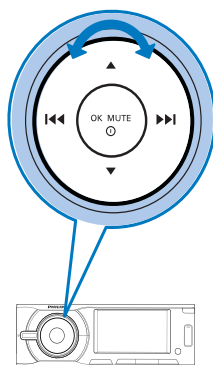


2 Press  or  to select the audio settings to be adjusted.

- **[BALANCE]**: 7L to 7R (L= left speaker ; R= right speaker)
- **[FADE]**: 7R to 7F (R= rear speaker ; F= front speaker)

3 Press  or  to change the value, and then press  to confirm.

- You can also turn the control knob to select a value.

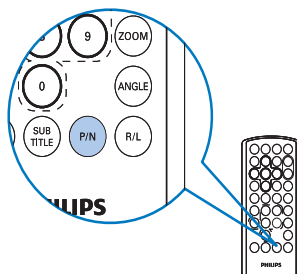


4 Press  to exit.

Select Video Output format

The default video output format is based on the format that is broadcast in your country. If the picture is distorted, change the video output.

Simply press the P/N button repeatedly to select the correct video output format.



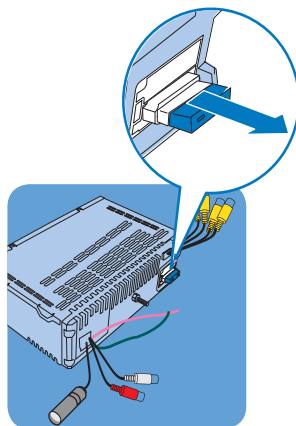
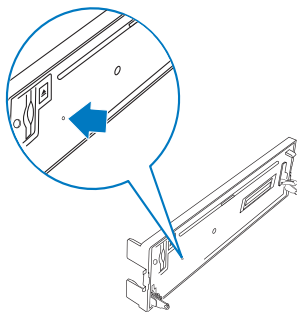
Turn on or off the screen backlight

To turn on or off the screen backlight of the system, press and hold **SOURCE**.

Reset

To reset the car audio system to its default setting:

- 1 Detach the front panel.
- 2 Press **RESET** by using a ball-point pen or similar tool.
 ↳ All settings are erased except clock.



Replace fuse

If the system does not power on, the fuse may be damaged and need replacement.

- 1 Detach the front panel and take out the system.
- 2 Check the electric connection.
- 3 Buy a new fuse that matches the voltage of the damaged fuse (15A).
- 4 Replace the fuse.