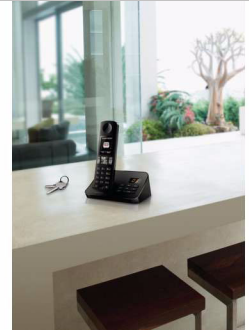


Philips  
Cordless phone

30-min answering machine

1.7" display/white backlight  
Speakerphone  
2 handsets



D6052B

## Rich set of features

Outstanding sound quality of HQ-Sound meets ergonomic and modern design. With large, full-colour display and rich set of features like keypad backlight, privacy settings, baby monitor and answering machine, this phone has all that you need.

### As simple as ever

- High-contrast 4.3-cm (1.7") TFT colour display
- Up to 30 min. message on your answering machine
- Privacy settings: call barring, silence mode with filtering
- Baby monitor alerts you when baby needs your attention
- Keypad backlight for fast access even in dark rooms
- Textured back cover for non-slip grip
- Up to 18 hours talk time

### Exceptional sound

- HQ-Sound: high quality acoustic engineering for superb sound
- MySound profiles to match your sound preference
- Full-duplex echo cancellation ensures a smooth conversation
- Freestanding handset with a speaker for easy hands-free calls

### Eco-conscious product

- Low radiation (ECO and ECO+ modes) and power consumption



# PHILIPS

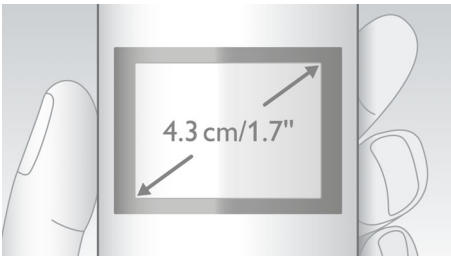
# Highlights

## Full-duplex echo cancellation



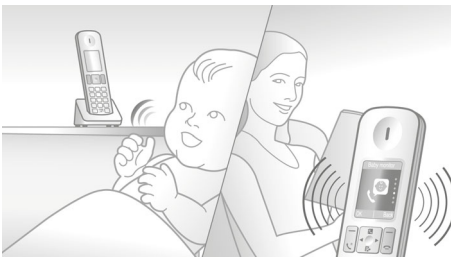
Natural conversation does not involve taking turns — there is always some natural overlap. Now, thanks to our full-duplex echo cancellation, you can hear perfectly, even if you are both talking at the same time.

## 4.3-cm (1.7") TFT colour display



High-contrast 4.3-cm (1.7") TFT colour display

## Baby monitor



Receive an alert when your baby needs you. Just place the DECT handset in the baby's room and receive an alert on your base or on another DECT phone (i.e. another landline number) or mobile phone (when you're out) when the baby starts to cry.

## Eco-conscious model with ECO+



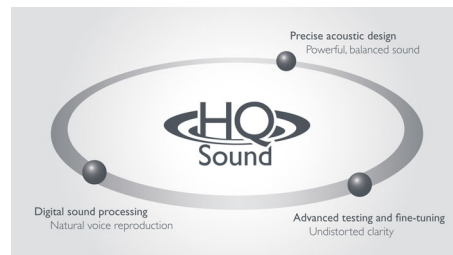
Philips phones are energy efficient and designed to be respectful to the environment. When ECO mode is activated, the emitted radiation is reduced by up to 60%, and up to 95% when the phone is charging. With ECO+ mode activation, the radiation drops to zero.

## Handset speakerphone



Hands-free mode uses a built-in loudspeaker to amplify the voice of the caller, allowing you to speak and listen during a call without holding the phone to your ear. This is especially useful if you want to share the call with others or simply multitask.

## HQ-Sound



Philips cordless phones with HQ-Sound build upon decades of experience and breakthrough innovations in developing Hi-Fi audio products and high-end headphones to deliver excellent voice clarity on our DECT phones. When it comes to improving sound quality, our acoustics engineers and architects have thought of everything – high-quality

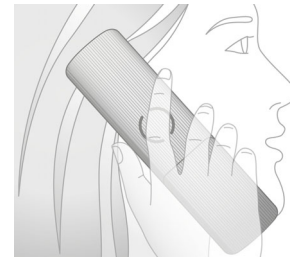
components, digital signal processing, precise acoustic design, advanced testing and fine-tuning. The result is sound that is crisp, clear and authentic. Sound so good and natural, it is almost like being there in person.

## Keypad backlight



The soft amber backlight makes keys easy to read in low light conditions and at night.

## Non-slip grip



The rear of the handset is treated with a special texture for added comfort and better grip.

## Privacy modes



Value your privacy and quiet at home? Easily disable the ringtones for specific "no call" times to enjoy peace and silence. An additional filtering function allows the ring still to sound when you receive a call from any number chosen from the phone book, making sure that only the "right" people can reach you. Thanks to call barring you can avoid expensive phone bill surprises by blocking calls to specific numbers, numbers starting with certain digits (for example pay-per-call numbers) or specific area codes.

# Specifications

## Sound

- HQ-Sound
- Sound Profile: MySound
- Volume control on handset
- Ringtones on handset: 15 polyphonic

## Picture/Display

- Display size: 4.3 cm / 1.7"
- Display type: TFT colour 262K
- Backlight: Yes
- Backlight colour: White

## Answering Machine

- Recording time capacity: up to 30 minutes
- Pre-recorded OGM
- Message counter on base: Amber counter (2 x 7 segments)
- Answering machine control: from base and handset
- Loud speaker on base

## Convenience

- Menu structure in the handset: Icon Menu
- Speakerphone — talk hands-free
- Personalisation: Silence mode and Night mode
- Call barring: Restrict the phone from making specific outgoing calls
- Signal strength indicator: 3- bar indicator
- Battery level indicator: 5- bar battery icon
- Intercom — multiple handsets
- Room monitoring
- Date/Time display
- Alarm Clock
- Event light on the handset
- Programmable hot keys: Keys 1 to 9
- Call Management: Call Waiting\*, Caller ID\*, Microphone mute, Missed Calls, Received Calls
- Key tone on/off
- Auto Registration
- Auto hang up
- Multi-base capability: 1
- Multi-handset capability: Up to 4
- Number of keys: 22
- Backlit keypad: Soft Amber
- Enlarge dialling digit
- Base Station keys: Paging key

- Charge time: 8 hours
- Line cord length: 1.8 m
- Power cord length: 1.8 m
- Range: Open field <300 m; indoor <50 m
- Base ringer
- Keypad lock
- Non-slip grip: Pinstripe
- Up to 18 hrs talk time
- Up to 250 hrs standby time

## Memory Capacity

- VIP Caller Identification
- Phonebook: 100 names and numbers
- Redial List Capacity: Last 20 numbers
- Call log entries: 50 entries
- Phonebook store in the base

## Power

- Battery capacity: 550 mAh
- Battery type: AAA NiMH Rechargeable
- Mains power: AC 100-240 V ~50/60 Hz

## Security

- Transmission encryption: Yes

## Network Features

- Compatible: GAP

## SAR Value

- Philips handsets: <0.1 W/kg

## Eco Design

- EcoMode: automatic and manual
- Eco+

## Packaging dimensions

- EAN: 87 12581 68630 7
- Number of products included: 1
- Packaging type: Soother
- Type of shelf placement: Soother
- Packaging dimensions (W x H x D): 18.5 x 13.6 x 11 cm
- Gross weight: 0.755 kg
- Net weight: 0.624 kg
- Tare weight: 0.131 kg

