

RC9800i Touch Screen Remote Control User Manual

© Copyright 2004 Royal Philips Electronics, Interleuvenlaan 72 - 74, 3000 Leuven (Belgium).

Remark:

All rights are reserved. Reproduction in whole or in part is prohibited without prior consent of the copyright owner.

Royal Philips Electronics is not liable for omissions or for technical or editorial errors in this manual or for damages directly or indirectly resulting from the use of the RC9800i Touch Screen Remote Control.

The information in this user guide may be subject to change without prior notice. All brand or product names are trademarks or registered trademarks of their respective companies or organizations.

Important Information

- Please read this guide carefully before using the RC9800i. Keep it for future reference.
- Install and connect the RC9800i Touch Screen Remote Control only in the order described in this manual. This ensures optimal installation results. You must set up your RC9800i before you can actually use it to control other devices.
- During set-up and installation, we recommend that you have available the original remote controls for your audio/video equipment, and other wireless network components that you want to control with your RC9800i.
- Broadband Internet access (min. 256 kbps) is required if you want to make optimal use of the Internet functions of the RC9800i.

Safety Precautions

- Before operating the system, check that the operating voltage indicated on the power adapter matches the voltage of your local power supply. If it does not, please consult your retailer.
- Radio equipment for wireless applications is not protected against disturbance from other radio services.
- Do not expose the product to dripping or splashing.
- Do not expose the product to excessive moisture, rain, sand or heat from heating equipment or direct sunlight.



- Do not open the product. Consult the website <http://www.philips.com/support> if you experience technical difficulties. If your problems cannot be solved by consulting the website, contact your Philips retailer.

Website

To consult the latest User Manual and to find information on the most recent firmware updates, please check the RC9800i Touch Screen Remote's website:
<http://www.homecontrol.philips.com>.

Contents of the Box

The RC9800i Touch Screen Remote Control box contains the following items:

- The RC9800i;



- A cradle and an adapter;



- A USB cable;



- A User Manual that helps you to start using the RC9800i and getting the most out of it;
- A Quick Start Guide that supports you in getting the device up and running;
- A CD with the following contents:
 - This manual in English, Finnish, Dutch, French, Swedish, Danish, Norwegian, German, Greek, Italian, Spanish and Portuguese (in US only in English, Spanish and French);
 - The Quick Start guide in English, Finnish, Dutch, French, Swedish, Danish, Norwegian, German, Greek, Italian, Spanish and Portuguese (in US only in English, Spanish and French);
 - The Philips Media Manager Software.
- Warranty Information;
- A Warranty Registration Card (only in US and Canada);
- An End User License Agreement: Your use of the RC9800i is subject to your agreement to be bound by and become a party to the Software End User License Agreement included in the RC9800i box and any terms presented electronically to you during setup of the RC9800i.

Contents

Pick Up Your RC9800i and Take a Good Look	6
On and Off	6
First-Time Power On	6
Everyday Use	6
The Touch Screen	7
The Hard Keys	7
The Network Activity Indicator	8
Charging the RC9800i	8
The Cradle as Digital Music Media Adapter	8
The USB Connector	9
Learning the Basics	10
Controlling Legacy Audio/Video Devices	10
What You Should Know About Home Networking	11
Home Networking and Connected Devices	11
Wireless Connectivity	12
What You Should Know About Activity-Based Control	12
Watch Activities	13
Listen Activities	13
Getting the Settings Right	14
RC9800i Settings	14
Calibrating the Touch Screen	14
End User License Agreement	14
Selecting Your Location	15
Network Settings	15
Date & Time Settings	17
Set Up Rooms and A/V Devices	18
Set Up Rooms	18
Set Up Devices	19
Set Up Activities	25
Getting the Most Out of It	26
Homepage	26
System Management Area	27
Smart Navigation	27
Home Hard Key	27
Back Hard Key	27
Page Hard Key	27
Activities	29
Watching Cable TV	29
Watching Satellite TV	31
Watching Broadcast TV	31
Watching DVD	31
Watching PVR	31
Watching Video Tape	32
Watching a Program Using EPG	32
Watching Digital Pictures From Your PC on Your TV	34
Watching Digital Pictures From Your PC on the RC9800i	35

Playing Games	36
Listening to a CD	36
Listening to a DVD	37
Listening to Broadcast Radio	37
Listening to Cable Radio	37
Listening to Satellite Radio	37
Listening to Audio Files From Your PC via the Audio System	38
Listening to MP3 Files From Your PC via the RC9800i	38
Synchronization Wizard	39
Individual Device Control	40
“Device Off”, “Activity Off” and “Room Off”	41
Adjusting the Settings	42
Accessing the Settings	42
RC9800i Setup	42
Power Settings	42
Screen Settings	43
Network Settings	43
Audio Settings	43
Date & Time	43
Set Up Rooms & A/V Devices	43
Add/Edit Rooms	44
Add/Edit A/V Devices	44
Electronic Program Guide (EPG)	46
Service-related Settings on the PC	46
Settings on the RC9800i	47
Installing the Software	51
Installing Philips Media Manager	51
Advanced Philips Media Manager Use	51
Philips Media Manager on More PCs	51
Organizing Media Files	51
Creating Playlists	51
Upgrading the Firmware	52
List of Symbols	53
Tips and Troubleshooting	54
Online Information	56
Support for Your Philips Connected Planet Product	56
Technical Specifications	57
Environmental Information	58
Communications Regulation Information	58
Glossary	60
Index	61

Pick Up Your RC9800i and Take a Good Look

Congratulations on the purchase of your new RC9800i Touch Screen Remote Control! This device is a “must have” if you want to enjoy a real state-of-the-art home entertainment experience. You will see that using the RC9800i is very easy.

Before going into details, let’s first have a look at the RC9800i itself.

In this chapter you will get acquainted with the various elements of the RC9800i.

You will learn:

- how to turn the RC9800i on and off;
- how to operate the touch screen;
- how to use the hard keys;
- how to charge the device by means of a cradle;
- the purpose and use of the USB connector.

Note You must set up your RC9800i before you actually can use it to control other devices. This set-up procedure is explained later on in this manual.

On and Off

First-Time Power On

The first time you use your RC9800i, you switch it on with the **On/Off Switch** by means of a pointed object, e.g. tip of a pen. The On/Off Switch is located at the bottom of the RC9800i.



On/Off Switch

Note The first time you activate your RC9800i, an **initial setup wizard** appears. This wizard will assist you in setting up your RC9800i. You must go through this initial setup before you actually can use the RC9800i to control other devices.

Before you proceed, we advise you to **fully charge your RC9800i**. See page 8 for more information on how to charge the device.

Everyday Use

During normal everyday use, the RC9800i will automatically go into standby mode when it isn’t being used. Since you can leave the RC9800i on all the time, you don’t need to switch the RC9800i off with the On/Off Switch. Leaving your device on also gives you the advantage of not having to wait for the device to start up.

To wake up the RC9800i from standby mode, simply tap the touch screen.

The Touch Screen

The RC9800i has a landscape-oriented touch screen. You can operate the touch screen either with your fingers or with a small stylus-like object with a blunt tip.

⚠ Attention! *Never use a ballpoint pen tip or other sharp object. These objects can damage the touch screen.*



The Hard Keys

At the right-hand side of your RC9800i's touch screen you will find several hard keys.



After you have properly set up the RC9800i, you can use the hard keys for the following functions:


- **Channel:** Press this hard key to go one TV Channel up or down.
- **Volume:** Press this hard key to control the volume.
- **Mute:** Press this hard key to mute the device that is being controlled.
- **Page:** Press this hard key to cycle through several screens in a loop. When only one page is available, the Page hard key is inactive.
- **Cursor:** Up-Down-Left-Right and OK hard keys. The action resulting from pressing the cursor depends on what is shown on the touch screen. In general the cursor keys allow you to navigate around.
The **Up and Down** hard keys can be either partially or fully pressed:
 - **Partially:** To move through a list one item at a time, partially press the up or down key.
 - **Fully:** To move quickly through a list, fully press the up or down key.
- The **OK hard key** in the middle of the cursor is used to confirm a selection and to trigger the corresponding action.
- **Back:** To quickly move back through the series of screens that you have been viewing, press the Back key. For more information see 'Smart Navigation' on page 27.
- **Home:** Press this hard key to return to the Homepage.

■ The Network Activity Indicator

At the top of your RC9800i there is an area that emits a blue light whenever the device is communicating in a wireless network.

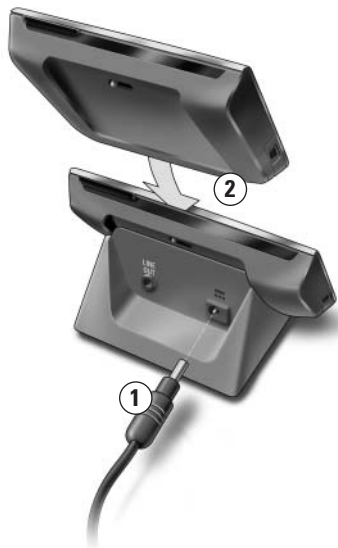
■ Charging the RC9800i

The battery level of the RC9800i is displayed on the touch screen. At any time you can charge the device as follows:

- 1 Plug the power adapter into the cradle.
- 2 Dock the RC9800i in the cradle.
The RC9800i is being charged and an animation of the battery icon appears on the touch screen .

It takes about 3 hours to fully charge the RC9800i. When the RC9800i is in standby mode, the battery lasts for approximately 2 weeks. However, we advise you to recharge the device frequently.

Note When the RC9800i is in standby mode, it will beep from time to time when the battery is getting low.



The Cradle as Digital Music Media Adapter

Besides using the cradle for charging the RC9800i, you can also use it as a digital music Media Adapter.

Note A **Media Adapter** is a wireless digital device that allows movies, pictures or music files to be streamed from a PC to non-networked audio-video devices like conventional TVs and audio systems. A **digital music Media Adapter** has less functionality in that it only allows music files to be streamed.

When you connect the cradle to the amplifier of your audio system by means of an audio extension cable, the cradle will function as a digital music Media Adapter.

Note The audio extension cable is not included.

To turn the cradle into a digital music Media Adapter, proceed as follows:

- 1** Plug one end of the audio extension cable (not included) into the analog 3.5 mm Line Out port of the cradle.
- 2** Plug the other end of the cable into an audio input of your audio system's amplifier and select this input on your amplifier as the current signal source.
- 3** Dock the RC9800i in the cradle.
If the RC9800i is playing music via its speaker, the RC9800i will be muted. The audio content can now be played on your audio system.



■ The USB Connector

The mini USB connector is located at the left-hand side of your RC9800i.

You will be using this USB connector to connect to a PC in order to download new firmware when it becomes available. For further information, see 'Upgrading the Firmware' on page 52.



Learning the Basics

In this chapter, you will get to know more about:

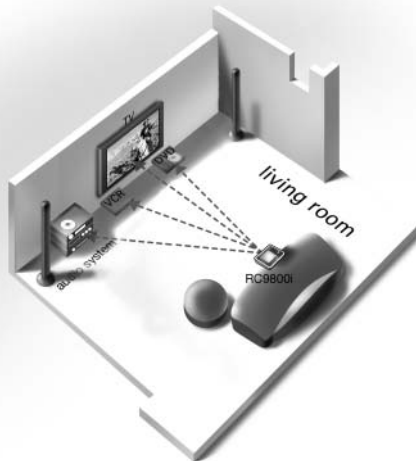
- Controlling legacy audio/video devices;
- Home networking;
- Activity-Based Control.

■ Controlling Legacy Audio/Video Devices

Legacy audio-video devices are non-networked devices that are typically operated by means of a remote control. Your TV, for example, is such a device. When you press a button on the TV's remote control (e.g. Mute), the remote control sends an Infrared (IR) signal to the TV. The TV receives this signal and executes the command (in this case: mutes the speakers).

Today, most households own many legacy A/V devices. Since most, if not all, of these devices come with their own remote control, the coffee table gets pretty crowded.

In this situation, the RC9800i is the perfect solution for you. The RC9800i is a universal remote control that can control a wide variety of devices, such as TVs, VCRs, DVD players and so on.



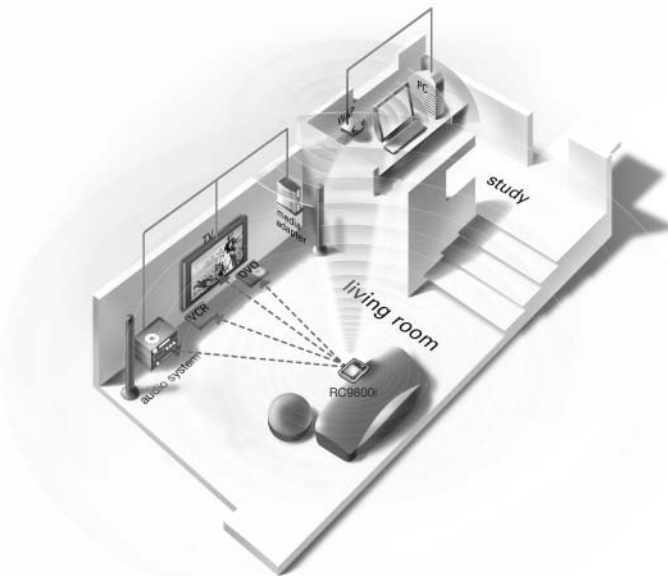
In the home plan above, you can see the RC9800i functioning as a universal remote control: it is controlling the audio system, the flat screen TV, the VCR and the DVD.

■ What You Should Know About Home Networking

Home Networking and Connected Devices

The RC9800i goes one step further than ordinary universal remotes. The RC9800i is revolutionary in that it can also operate most of the connected devices in your home network.

Connected devices are devices that comply with the **UPnP (Universal Plug and Play) A/V Protocol**. UPnP allows various devices like PCs and intelligent networked appliances (e.g. Media Adapters) to communicate with each other. More specifically, UPnP allows connected devices to find each other and to communicate about their capabilities and their content. Throughout this manual, connected devices are understood to be compliant with the UPnP A/V Protocol.



In the home plan above, a typical situation is depicted: A desktop PC (with peripherals like monitor, mouse and keyboard) and a Wireless Access Point (WAP) are located in the study.

In the living room, a flat screen TV is hanging on the wall. An audio system sits in the left-hand corner and there is a Media Adapter in the right-hand corner. The Media Adapter is wired to the flat screen TV or to the audio system.

Note A **Media Adapter** is a wireless digital device that allows movies, pictures or music files to be streamed from a PC to non-networked audio-video devices like conventional TVs and audio systems.

As you can see, the RC9800i on the couch in the living room, controls **not only legacy audio/video devices**, such as the TV and the audio system, **but also connected devices** such as the PC and the Media Adapter.

Wireless Connectivity

Connected devices can be wired, yet nowadays they are becoming more and more part of a wireless network. There are various technologies used for wireless networking. Most of them are WiFi 802.11 variants, e.g. '802.11a', '802.11b' and '802.11g'. The RC9800i can be operated in both 802.11b and 802.11g networks.

The RC9800i uses wireless technology to:

- connect to networked entertainment devices, such as Philips Connected Planet TVs or audio systems;
- connect to PCs (the PC should be equipped with appropriate UPnP A/V compliant software);
- connect to bridge devices like UPnP A/V compliant Media Adapters;
- access the Internet to download Electronic Program Guide data.

The center of the wireless home network is the Wireless Access Point (WAP). The communication between devices in the wireless network is carried out via the WAP.

⚠ Attention! *Most wireless devices can also operate in **peer-to-peer mode**. This means that there is a direct wireless communication link between two communicating devices without intervention of a Wireless Access Point. If you have set up devices in peer-to-peer mode, we strongly recommend that you make your wireless home network operate with a Wireless Access Point (WAP) and that you **disable all peer-to-peer links**.*

For example, let's see how an MP3-file, residing on the PC's hard disk, can be played on the audio system in the living room. After selecting the file on the RC9800i and pressing the play button, the Media Adapter and the PC establish communication via the WAP upon the RC9800i's instruction. The file's digital content is wirelessly streamed from the PC to the Media Adapter. The Media Adapter then converts this digital content into an analog signal that feeds into the audio system's amplifier, and from there it goes to the speakers.

What You Should Know About Activity-Based Control

Your RC9800i comes equipped with a very powerful feature called **Activity-Based Control**. Activity-Based Control allows you to automate and substantially simplify your listening and viewing experience. When using Activity-Based Control you no longer have the hassle of switching on/off devices and selecting the appropriate inputs (sources). Instead, you indicate the activity you want to do, e.g. watch DVD on your flat screen TV. The RC9800i will take care of switching on your flat screen TV and DVD, while tuning the TV to the appropriate input (source).

Whether the controlled devices are connected devices or legacy A/V devices does not really matter. The RC9800i blends them into a single unified control concept: Activity-Based Control.

To control all of your audio-video devices, the RC9800i needs to know where they are located and how they are connected to each other. This is addressed during a **one-time set-up**. During set-up, you tell your RC9800i, by means of an easy-to-use wizard, which devices are available in a room and for which activities these devices are used. Your RC9800i then knows, each time you use it, which devices and activities are available in a specific room. Moreover, the RC9800i also knows how to switch the

devices that are used for an activity on and off, and how to select the appropriate inputs (sources). You, as a user, will not have to bother with any of this: The RC9800i will take care of it all.

Activity-Based Control falls into two categories: **watch activities** and **listen activities**.

Watch Activities

You can enjoy a whole range of 'Watch' Activities. Just a few examples:

- Tonight, you're going to watch a DVD movie on your flat screen TV. With the RC9800i, you select the flat screen TV as the device on which you'll be watching the movie and the DVD player as the source that holds the content. Next, the RC9800i will show you a screen with all of the relevant TV and DVD control buttons, as if it were the TV's and DVD's remotes in one.
- You want to watch television, but don't know what is on. Take your RC9800i and launch the Electronic Program Guide (EPG). You can select any program from the EPG; the RC9800i will take care of tuning your TV to the appropriate channel.
- Some friends are coming over to see your summer holiday pictures. It won't be easy for everyone to gather around the PC to view the photos. Why not view them on the flat screen TV in the living room? With a Media Adapter connected to the TV, you are all set, and with the RC9800i, you can control the whole viewing session, including previewing photos on the RC9800i's screen and setting up a slide show.
- A couple of weeks ago, you went snowboarding with some friends. Now you would love to see those pictures again. You can do that right away on the RC9800i's screen.

Listen Activities

You can also perform various 'Listen' activities:

- When you want to listen to a CD on your audio system, you no longer need to look for the right remote. With your RC9800i you can control both your CD-player and your audio system.
- Instead of listening to a CD, you would like to enjoy some MP3 audio-files from your PC. With the RC9800i you can browse through your PC folders, select your favorite songs and play them on the RC9800i or on any connected audio system.

Note *The undocked RC9800i features only a speaker intended for pre-listening. Enjoying music via the RC9800i can be done best via the cradle, connected by an audio extension cable to your audio system. For further information, please check 'The Cradle as Digital Music Media Adapter' beginning on page 8.*

To learn more about the activities you can perform with your RC9800i, please check 'Activities' beginning on page 29.

Getting the Settings Right

When you start the RC9800i for the first time, a sequence of screens will guide you through the **initial setup process**. During this setup process, you will be guided through the **most important settings** concerning:

- The RC9800i;
- Your home situation, more specifically the rooms where you are going to use the RC9800i;
- The audio-video devices that you want to control with the RC9800i.

Setting up the RC9800i may take between 30 minutes and 2 hours, depending on the amount of audio-video devices that you are going to control with it.

Note *This initial setup process is carried out only during the first-time startup of the RC9800i. However, you can modify all settings afterwards as explained in 'Adjusting the Settings' beginning on page 42.*

⚠ Attention! *Before you proceed, we advise you to charge your RC9800i for 3 hours.*

RC9800i Settings

Calibrating the Touch Screen

On first use you have to calibrate the RC9800i's touch screen. This ensures that the touch screen will respond accurately when you touch it.

Note *It is recommended that you calibrate the screen and go through the initial setup using the blunt tip of a non-metallic stylus-like object. In daily use, you can operate the device with your fingers.*

Tap very precisely the center of the crosshairs that appear in the four corners of the screen. The RC9800i may repeat this process a number of times, until its screen is accurately calibrated.

Note *If you notice that after some time the touch screen no longer responds accurately to the screen areas you are touching, you can recalibrate the touch screen. See 'Screen Settings', on page 43.*

End User License Agreement

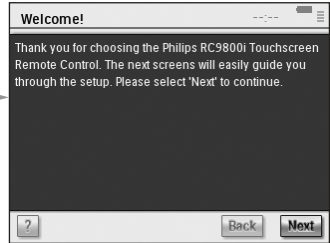
The RC9800i will display a message informing you of the existence of the End User License Agreement (EULA), included in the RC9800i box. Read this EULA carefully. Your use of the RC9800i and its software is subject to your agreeing to be bound by and become a party to the Software End User License Agreement included in the RC9800i box and any license terms presented electronically to you during setup of the RC9800i and/or printed terms included in the RC9800i box. Only if you agree to be bound by these terms, choose **I Agree**. Otherwise discontinue using the RC9800i.

Selecting Your Location

Next, you will be prompted to indicate what region you live in.

⚠ Attention! *The location you select in this screen affects applications like the Electronic Programming Guide, the remote control codes database and the questions asked during setup.*

- 1 Select either **North America** or **Europe**.
The RC9800i will automatically restart to configure the location settings and will then display the following welcome screen. →



- 2 Choose **Next** to start the setup process.

Network Settings

Tip *Make sure that you have your Wireless Access Point (WAP) settings information at hand. You will need this information in the following screens. If you're unfamiliar with network terminology, consult the 'Glossary' on page 60.*

⚠ Attention! *Most wireless devices can also operate in peer-to-peer mode. This means that there is a direct wireless communication link between two communicating devices without intervention of a Wireless Access Point. If you have set up devices in peer-to-peer mode, we strongly recommend that you make your wireless home network operate with a Wireless Access Point (WAP) and that you disable all peer-to-peer links.*

- 1 Indicate whether you use the RC9800i with a wireless network or not.
 - If not, choose **No** and click **Next**. The screen 'Date & Time Settings' will appear. In this case proceed with the setup on page 17.

Tip *In the event that you have a wireless network set up in your home, choose **Yes**, even if you do not use the RC9800i to control other networked devices. This way, if you want, the RC9800i can retrieve date and time information from dedicated time servers on the Internet, see 'Date & Time Settings' beginning on page 17.*
 - If you do use the RC9800i with a wireless network, choose **Yes** and click **Next**.
A screen with the current network connection status will appear.
- 2 Indicate whether you want to continue using the current network connection status or not.
 - If so, choose **Next**.
The screen 'Date & Time Settings' will appear. In this case proceed with the setup on page 17.
 - If you want to connect to another network or alter the network settings, choose **Change**.
The screen 'RC9800i Network Settings' will appear.

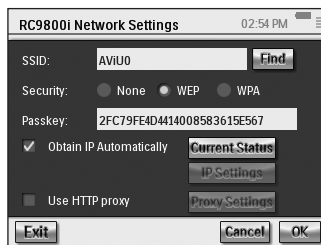
Change Network Settings

1 In the screen, 'RC9800i Network Settings', enter the **SSID** number of your wireless network.

1 Choose **Find** to find all available wireless networks.

2 Select the **SSID** of the network you want the RC9800i to connect to.

2 Select the appropriate Security settings that apply to your wireless network:



Tip Check the settings of your WAP.

- **None:** Communication over your network will not be encrypted and can therefore be captured and understood by other people in the proximity of your network.

- **WEP:** When you choose this option, you must enter your **WEP Passkey**. This Passkey is a 64-bit (enter 10 characters) or a 128-bit (enter 26 characters) hexadecimal (0...9, A,B,C,D,E,F) encryption key that secures your wireless network by encoding all communication. Other people who do not have the appropriate key will be unable to decipher the communication over your network.

- **WPA:** WiFi Protected Access is a network communication standard that increases the level of data protection (encryption) and access control (authentication) for existing and future WiFi wireless networks.

For security reasons, you are strongly advised to use WEP or WPA encryption for all devices that are part of your wireless network.

3 Select **Obtain IP automatically** to use a **dynamic IP address**.

Note When you select **Obtain IP automatically**, your Wireless Access Point (WAP) will, by means of DHCP (Dynamic Host Configuration Protocol), automatically assign IP addresses to your devices.

-OR-

Deselect **Obtain IP automatically** and choose **IP Settings** to manually enter your IP, DNS (Domain Name Server), Netmask and Gateway settings.

Note The **Status** button gives information concerning your IP address, Network and MAC address.

4 If you connect to the Internet via a proxy server, select **Use HTTP proxy** and choose **Proxy Settings**.

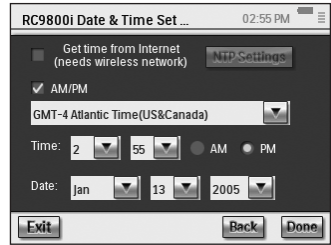
Note A proxy server is an intermediary between your own PC and the Internet to ensure security, allow administrative control, provide a caching service and so on. If your Internet Service Provider (ISP) uses such a proxy server, please check your ISP documentation or your browser settings to retrieve the proxy settings.

5 Choose **Next**.

A screen will appear with the message that the RC9800i is applying your network settings.

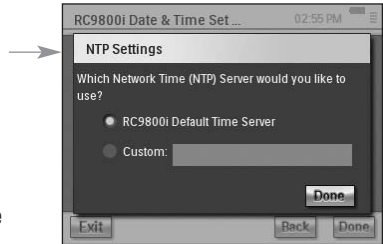
Date & Time Settings

You can have the RC9800i retrieve date and time information from **dedicated time servers on the Internet**, or you can set the date and time **yourself**.



Use a dedicated time server on the Internet

- 1 Select **Get time from Internet**.
- 2 Choose **NTP settings**.
The NTP settings appear:



- 3 Select **RC9800i Default Time Server** from the list.
-or-
Select a **Custom Server** and fill in the server's address.

- 4 Select **12 hour (AM/PM)** if you want to use this time format. Otherwise the RC9800i will use the 0-24 hours time format.
- 5 Choose **Done**.
- 6 Select a **time zone**.

List of timezones

(GMT - 12:00): International Dateline West

(GMT - 11:00): Midway Island, Samoa

(GMT - 10:00): Hawaii

(GMT - 09:00): Alaska

(GMT - 08:00): Pacific Time (US & Canada); Tijuana

(GMT - 07:00): Arizona, Mountain Time (US & Canada)

(GMT - 06:00): Central Time (US & Canada), Central America

(GMT - 05:00): Eastern Time (US & Canada), Indiana

(GMT - 04:00): Atlantic Time (US & Canada)

(GMT - 03:30): Newfoundland

(GMT - 03:00): Greenland

(GMT - 02:00): Mid Atlantic

(GMT - 01:00): Azores, Cape Verde Islands

GMT: Greenwich Mean Time: Dublin; Edinburgh; Lisbon; London

(GMT + 01:00): Amsterdam; Berlin; Bern; Rome; Stockholm; Vienna

(GMT + 01:00): Belgrade; Bratislava; Budapest; Ljubljana; Prague

(GMT + 01:00): Brussels; Copenhagen; Madrid; Paris

(GMT + 01:00): Sarajevo; Skopje; Sofia; Vilnius; Warsaw; Zagreb

(GMT + 02:00): Athens; Istanbul; Minsk

(GMT + 02:00): Bucharest

(GMT + 02:00): Helsinki; Riga; Tallinn

- 7 Choose **Next**.

The RC9800i will now proceed with the setup of rooms and A/V devices.

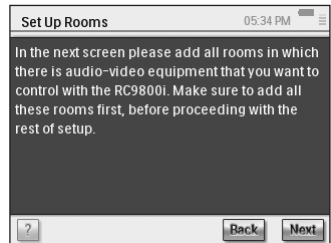
Set date and time yourself

- 1 Make sure that **Get time from Internet** is not selected.
- 2 Select **12 hour (AM/PM)** if you want to use this time format. Otherwise the RC9800i will use the 0-24 hours time format.
- 3 Select a **time zone**.
- 4 Set the **date and time**.
- 5 Choose **Next**.
The RC9800i will now proceed with the setup of rooms and A/V devices.

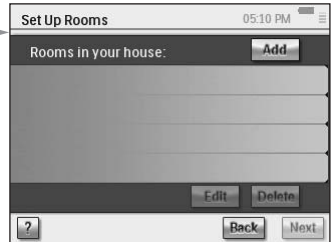
■ Set Up Rooms and A/V Devices

Next, the RC9800i will prompt you with questions to find out which rooms contain audio-video equipment that you want to control with the RC9800i, as well as to learn more about the nature of this equipment.

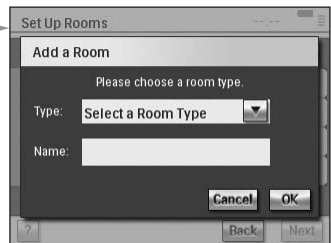
Set Up Rooms















- 1 To continue, tap **Next**.
The screen 'Set Up Rooms' appears.



- 2 Choose **Add**.
The screen to add rooms appears.



- 3** Select the **room type** of your choice, for example Living Room.
You can choose from the list below:

	Living room		Garage
	Bedroom		Gym, Exercise room
	Bar		Library, Study
	Dining room, Kitchen		Office
	Family room		Theater, Movie room
	Game room, Kids room		Other

The name of the room is filled out automatically. If desired, you can rename the room.

Tip If you have a room that is not in the list, select a room that most closely matches your room and rename it.

- 4** Choose **OK**.
The screen 'Set Up Rooms' appears again. The newly added room is displayed in the list. If you wish, you can add additional rooms.
You can also edit or delete rooms that are already in the list by selecting them and choosing **Edit** or **Delete**.

Attention! You should add all the rooms that contain audio-video devices you want to control with your R9800i. Please make sure to add all these rooms first before proceeding with the remainder of the setup process, as you will not be able to add rooms later on in the first-time setup process.

If you have forgotten to add a room or if you want to add a room later on, you can add it afterwards as explained in 'Add/Edit Rooms' on page 44.

- 5** After adding all your rooms, choose **Next**.

Set Up Devices

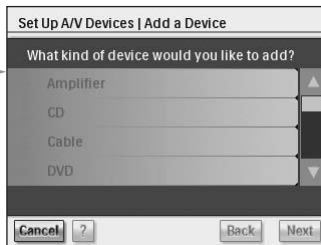
For each room you have added, you can now add the A/V devices you want to control with your RC9800i.

- 1** Choose **Next**.
- 2** Select a **room** of your choice.
For this example, let's select the **Living Room**.
Since you haven't configured any devices yet, an empty device list appears.



3 Choose **Add**.

The screen 'Set Up A/V Devices | Add a Device' appears:



You can choose from the list below:

- Amplifier
- CD (CDR) player
- Cable Box
- DVD Player
- DVDR (+HDD)
- DVD - VCR
- Game Console
- Home Cinema / Home Theater
- Media Adapter
- Media Center PC
- PVR (DVR, Tivo, Replay TV, ...)
- Projector
- Receiver (Amplifier + Tuner)
- Satellite Receiver
- TV
- Tuner (Radio)
- VCR

4 Select a device located in the room currently selected that you want to control with the RC9800i and choose **Next**.

For example, let's select a TV.
The following screen appears:



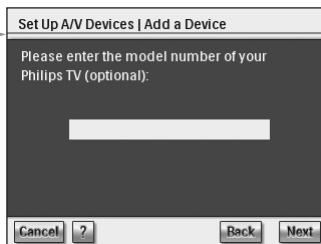
5 Choose the **alphabet buttons** to jump to the appropriate brand list.

Note These buttons *work like buttons on a cell phone*: choose a button once to jump to a brand list starting with the first character, choose it twice for a list that starts with the second character, three times for the third character, and so on.

6 Select the brand of the device and choose **Next**.

For example, let's select **Philips** as the TV's brand.

A screen, where you can optionally enter a model number, appears:



Note If you have multiple devices of the same brand and type, we strongly advise you to fill out the model number. This way, the RC9800i will automatically copy all relevant device information when you add the next device of the same type, saving you setup time.

If you don't have this information, leave the text field blank and choose **Next**.

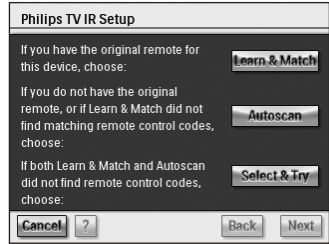
Note If the brand of your device is not in the list, simply choose any other brand in the list.

Determining Remote Control Codes

Good To Know: About Remote Control Codes

Your RC9800i sends infrared (IR) signals to your devices to trigger an action, e.g. to make the VCR start recording.

For every action/function, the RC9800i sends a specific IR signal, called a 'remote control code'. The codes for various functions of a device are clustered in a 'codeset'. Your RC9800i comes with a huge database that contains numerous remote control codesets for all kinds of devices and brands.



There are 3 different ways to learn the remote control codes used by your device:

- If you have the original remote control for the device, choose **Learn & Match**;
- If you don't have the original remote control or if Learn & Match didn't find matching remote control codes, choose **Autoscan**;
- If neither Learn & Match or Autoscan found matching codes, choose **Select & Try**.

Learn & Match

With this method, you use the device's original remote control to determine the remote control codes that your RC9800i has to use. The RC9800i will first tell you which function it will learn. Then, follow the on-screen instructions until an animated picture appears.

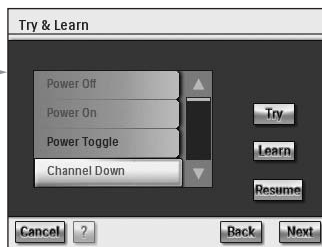
- 1 Aim your device's original remote control to the RC9800i's infrared sensor. Keep it at a distance of approximately 5 cm / 2 inches. Make sure to aim at the area between the two white stripes.



- 2 On the original remote control, press the button indicated by the RC9800i. Keep it pressed until the RC9800i indicates that it has learned the remote control code (or that it was unable to learn the code). Choose **Skip** if your original remote control doesn't feature the command asked for by the RC9800i.

Note In some cases, depending on the kind of device you're configuring, **steps 1-2 above may be repeated** several times. Also, depending on the kind of device, the actual buttons to press may vary.

When the RC9800i has determined the appropriate remote control codes, the 'Try & Learn Codeset' screen will appear. →



You can try the functions mentioned in the list, to check whether the selected codes work properly.

Note Buttons with text in red have no remote control code assigned to them. If you want to use these functions with your RC9800i, you can learn them individually using your original remote control. Some functions may not be available on your original remote; you can then safely disregard them in the list.

3 Select a function and choose **Try**.

If the device doesn't respond correctly to a function, choose **Learn** and perform the procedure as described in steps 1-2 on page 21.

Tip It is strongly advised to verify that all functions that were available on your original remote are also available on the RC9800i and that they do work correctly.

4 If the device responds correctly to the various functions, choose **Next**.

Note If the **Learn & Match** method was unable to determine the appropriate remote control codes, or if you don't have the original remote control, use the **Autoscan** method.

Autoscan

This method attempts to find a set of remote control codes by automatically sending codes to your device to find out which codes your device reacts to. Make sure that your device is on and follow the on-screen instructions, until a progress bar appears: →



1 When the device reacts, choose **My Device Reacted**.

A confirmation screen will appear.

2 To use the set of codes presented, choose **Next**. Otherwise, to resume scanning, choose **Back**.

3 After choosing **Next**, the screen 'Try & Learn' will appear. You can try the functions mentioned in the list to check whether the selected codes work properly.

Note Buttons with text in red have no remote control code assigned to them. If you want to use these functions with your RC9800i, you can learn the codes individually using your original remote control. Some functions may not be available on your original remote; you can then safely disregard them.

4 Select a function and choose **Try**.

- If the device doesn't respond to the function, choose **Learn** and perform the procedure as described in steps 1-2 on page 21.

Tip You are strongly advised to verify that all functions that were available on your original remote are also available on the RC9800i and that they do work correctly. If you find that many functions do not work correctly, it is likely that a better matching set of codes can be found for your device. To find out if another set of codes can be found for your device, choose **Resume**.

- If the device responds correctly to the various functions, choose **Next**. A confirmation screen will appear.

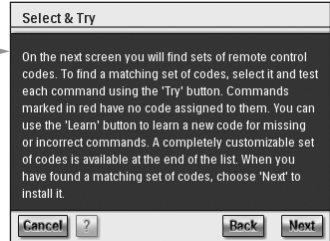
Note If the **Autoscan** method was unable to determine the appropriate remote control codes, or if you don't have the original remote, use the **Select & Try** method.

Select & Try

This method lets you select remote control codes and try them.

1 In the screen for IR Setup, choose **Select & Try**.

The following screen will appear:



2 Select a set of codes.

After choosing a codeset, you can try the functions mentioned in the list, to check whether the selected set of codes works properly. The list is populated with all the functions that are relevant for the device type that you're setting up.

3 Select a button and choose **Try**.

If you feel the selected set of codes is not working properly, i.e. many functions do not trigger the appropriate action, you can select a different codeset to try.

Once you have identified the best matching codeset for your device, you can manually learn incorrect or missing functions (missing functions have no remote control codes assigned to them; they are marked in red.)

4 When finished, choose **Next**.

A confirmation screen will appear.

Power on, channel switching and input selection

After having determined the correct remote control codes for a device, the RC9800i will now determine the most appropriate methods for powering on, switching channels and selecting inputs on the device.

Note In the following paragraph, the example of a TV is discussed. Depending on the kind of device you're configuring, some questions may be omitted.

Power on questions



Follow the on-screen instructions. The RC9800i will determine the best power on method for the TV.

Channel switching questions

The RC9800i will now prompt you with questions to find the best method for tuning to 1, 2 and 3-digit channels. Follow the on-screen instructions.

Input selection questions

When the channel switching method is defined, you will be asked a few questions about how you select A/V inputs (i.e. audio-video sources that feed audio-video signals into your television), e.g. AV1, AV2, EXT1, EXT2, RGB or YC2.

- 1 Use the  and  buttons to browse through the different input selection options.

⚠ Attention! Make sure that you carefully read all the options. Some options look very similar, but differ considerably. Choose the input selection method that best matches your situation.

- 2 Choose **Select this option** when you have found the input selection method that best matches the mechanism that your TV uses.

Note The sequence of screens discussed below depends on the option chosen.

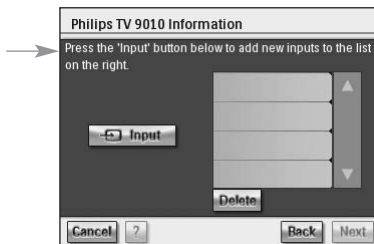
For example, let's select option 2/7 'Using a single button, I cycle through inputs until I reach the one I want'.

- 3 Choose **Next**.
- 4 Follow the **on-screen instructions**.

You will be asked to turn on the TV and to try the TV's input button.

- 5 Choose **Next**.

The following screen will appear:



- 6** Choose **Input** to make the TV switch to an input. Indicate whether your TV shows the signal from its tuner (i.e. broadcasted programs) or an input. Repeat this step until all inputs, including the TV's internal tuner, have been added.

Tip You can add inputs with exactly the same name as they are worded on your TV. You can also choose names of your own choice.

- 7** Choose **Next** and indicate which input is currently being displayed.

- 8** Choose **Next**.

You will receive a confirmation message when the TV details are successfully added.

Note Repeat the 'Set Up Device' process for all devices that you want to control with the RC9800i. Make sure also to add media adapters and other connected devices if you want the RC9800i to control them.

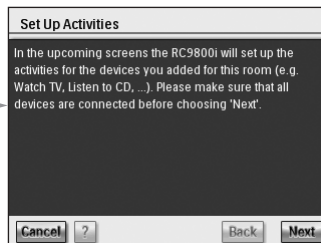
Set Up Activities

In 'Set Up Devices', you have configured each individual device that you want to control with the RC9800i. The RC9800i will now collect information on which devices are used for activities (e.g. Watch a DVD, listen to a CD, etc.). This information will allow the RC9800i to automate and simplify your listening and viewing experience by means of Activity-Based Control.

Note If you want to know more about Activities and Activity-Based Control, please read 'What You Should Know About Activity-Based Control' on page 12. This background information is not mandatory for completing the Activity Setup.

In the course of the Activities Setup, all activities will be configured room by room.

An introductory screen will automatically appear.



- 1** Choose **Next** twice.

The following screen will appear.

- 2** Check the activities that are relevant for you (i.e. things that you want to do with your equipment and that you want to control with the RC9800i).



3 Choose **Next** and follow the **on-screen instructions** to configure all the activities you have selected. This means indicating which devices are involved in an activity, what A/V inputs are being used and, if applicable, what channels the device(s) must tune to.

If you have configured devices in more than one room, steps 1-3 will be repeated for every room.

A confirmation screen will appear when all activities have been added successfully. →



Your RC9800i is now fully set up and you can start using it!

Getting the Most Out of It

This chapter explains in detail the various features of the RC9800i. Here you can learn how to maximize your entertainment experience.

First, the following concepts will be explained:

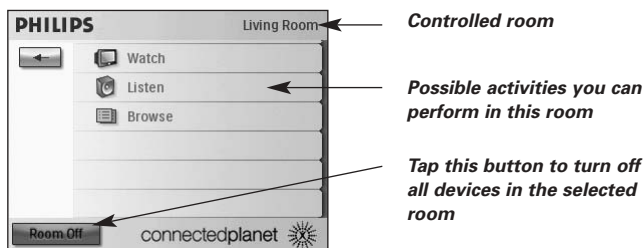
- the **Homepage**, which is the starting point for all Activities;
- the **System Management Area**, which is the heart of your RC9800i;
- the **Smart Navigation Concept**, which allows quick and easy navigation by means of the **Home**, **Back** and **Page** hard keys.

Next, several **Activities** are discussed in detail. Finally, there is also an explanation on how to control devices individually, outside of the context of activities.


■ Homepage

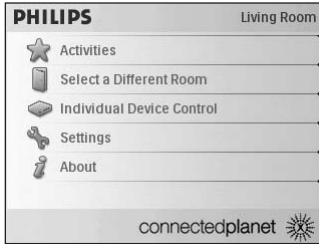
The Homepage of the RC9800i is the starting point for all activities.

At the top of the Homepage, the current room (in this case the living room) is displayed. The Homepage itself lists the 3 available activities: **Watch**, **Listen** and **Browse**.



System Management Area

By choosing  on the Homepage, you go to the System Management Area.



The System Management Area contains the following items:

- **Activities** displays the Home Page with the available activities: Watch, Listen and Browse. Depending on the room and the devices located in that room, the available activities may differ.
- **Select a Different Room** allows you to select a different room. For further information, see 'Good To Know: Changing the Room' on page 36.
- When you select **Individual Device Control**, a list will appear showing the devices that you can watch or listen to in the chosen room. For each device, a series of screens with remote control functions is available.
- **Settings** allows you to change your RC9800i settings, add or edit rooms and A/V devices information, and set up Internet services.
- **About** contains information on the software version of your RC9800i.

Smart Navigation

The **Home**, **Page** and **Back** hard keys allow you to navigate easily through the RC9800i screens.

Home Hard Key

During daily use, to easily return to the Homepage, use the Home hard key. No matter which screen is displayed, the RC9800i will show the Homepage.

Back Hard Key

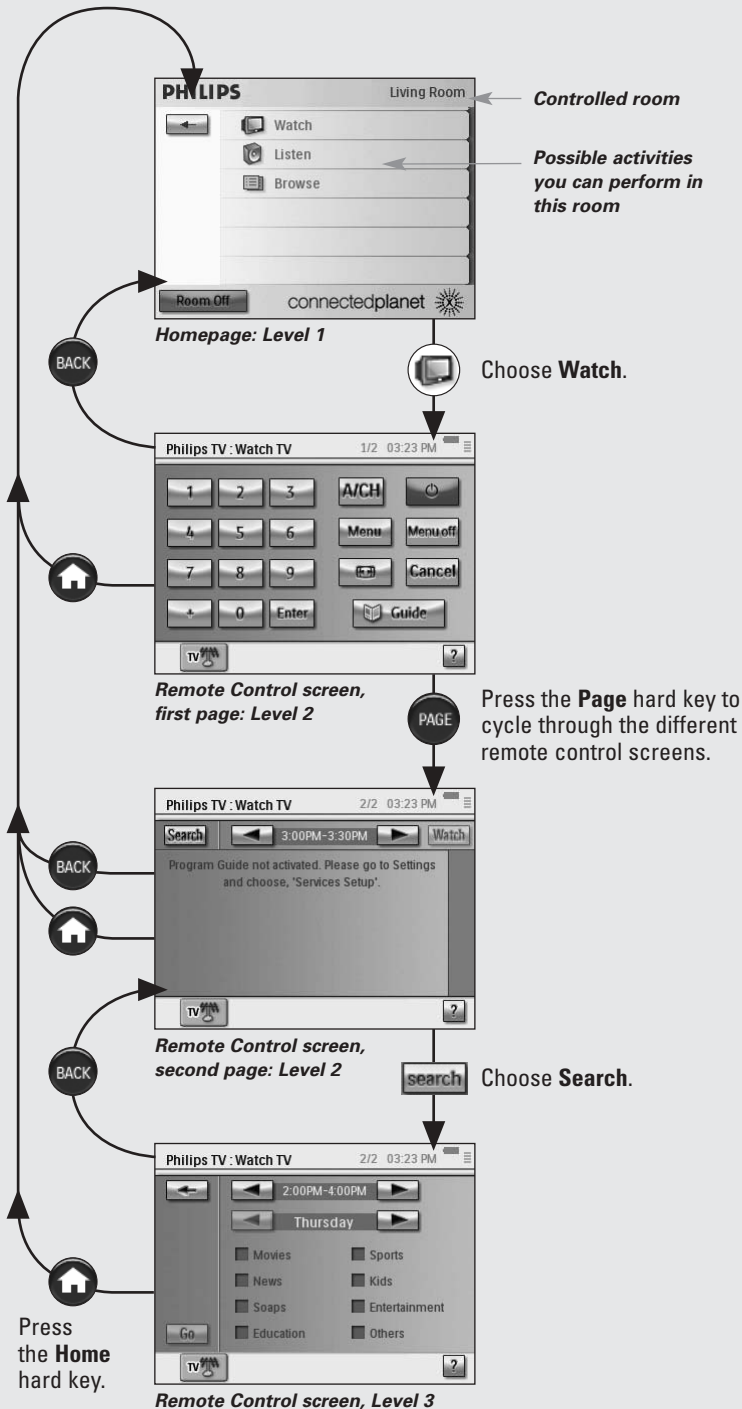
Your RC9800i is equipped with a Back hard key, that is useful for quickly going back to higher levels. Each time you press the Back hard key, you access the last screen you viewed on a higher level. As this happens, screens at the same level are skipped.

Page Hard Key

Press this hard key to quickly move through the various remote control screens belonging to a particular activity or device.

Note When only one page is available, the **Page** hard key is inactive.





Activities

In 'What You Should Know About Activity-Based Control' on page 12, you can read the basics about Activity-Based Control. This will now be described in more detail.



Watching Cable TV

Tonight, a great movie is being broadcast. You're going to have a cinema experience by watching it on your living room's flat screen TV. With the RC9800i you select the cable box as the source that holds the content and the flat screen TV as the device you'll be watching the movie on.

To do so, proceed as follows:

- 1 On the Homepage, choose **Watch**.

The following screen will appear.

Note If you have multiple display devices in the room, the RC9800i will prompt you to select the display device you want to watch.

Note Icons in bottom bar may differ depending on the activities you have set up.

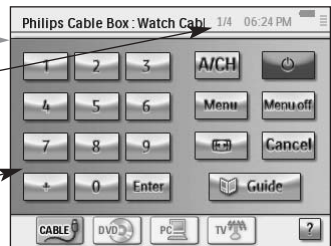


- 2 Choose the cable box icon (the source that holds the content you would like to enjoy).

The combined control screen will appear.

This indicates the number of pages available. Use the Page hard key to scroll through the pages.

These are the typical controls for watching television via a cable box.



- 3 Choose the digits corresponding to **the channel you want to watch**, the one that broadcasts the movie.

The RC9800i will send remote control codes to tune the cable box to the appropriate channel.

The RC9800i offers two ways to interact with the television and the cable box:

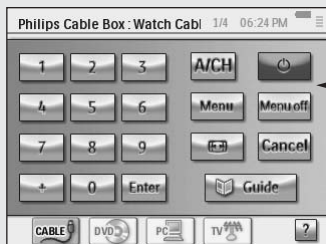
- Choose a soft button on the control button page;
- Press the hard keys on the RC9800i.
 - **Channel up/down** to switch channels;
 - **Volume up/down/Mute** to adjust the television's volume;
 - **Home** to go to the RC9800i Homepage.

Good To Know: Combined Control Screens

Combined Control screens are the core elements of the Activity-Based Control concept. They allow you to control the involved devices and their content during the activity. You can cycle through the various control screens with the **Page** hard key.

For example, in the scenario above, the combined control screens for a cable box hooked up to a TV appear. The first screen shows the most frequently used control buttons for both devices. By pressing the **Page** hard key, you have access to additional, less frequently used controls.

An example page of a combined control screen:



← The most frequently used controls for the television and the cable device.

The following elements are part of a combined control screen:




- The page number and the total number of pages available for this particular activity: **1/3**
- The 'activity' bar with all the activities that the TV can participate in. The selected activity is highlighted:

: TV, VCR, cable box (current selection), DVD;

You can switch from one activity to another by simply tapping the icon of your choice. Below is a list of all activities.


	Watching broadcast TV		Playing Games
	Watching Cable TV		Listening to CD
	Watching Satellite TV		Listening to DVD
	Watching PVR		Listening to Broadcast Radio
	Watching Video Tape		Listening to Cable Radio
	Watching DVD/DVDR(+HDD)		Listening to Satellite Radio
	Watching PC content		Listening to PC content

Note The number and nature of activity icons that are shown depend on the activities that you configured during set up. To add activities, first add the appropriate device, see 'Add/Edit AV Devices' on page 44.

- The 'battery status' indicator: . This indicator goes through 4 stages (full, 2/3, 1/3, minimum). When your RC9800i is docked and charging, the battery status indicator is animated.
- The 'Time' indicator: The time is indicated in HH.MM or HH.MM PM/AM format. To change the time or time format, see page 43.
- The 'IR active' indicator: . This indicator lights up when remote control codes are being sent. In the event that the RC9800i has no remote control code available for the button pressed, the IR indicator will turn red and the RC9800i will beep. You can find out which codes are missing. See 'Changing the remote control codes of a device' on page 45.
- The 'Network' indicator: . The number of bars is an indication of the network strength. In the event of the network strength becoming low, a single red bar will be displayed.




Watching Satellite TV

To watch satellite TV, perform steps 1 to 3 as described in 'Watching Cable TV' on page 29. Instead of selecting the cable box as the applicable source, select the satellite receiver .



Watching Broadcast TV


To watch broadcast TV (i.e. use the TV's internal tuner), perform steps 1 - 3 as described in 'Watching Cable TV' on page 29. Instead of selecting the cable box as the applicable source, select the TV's internal tuner .



Watching DVD


You're going to watch a DVD movie on your TV in the living room.

To do so proceed as follows:

- 1 On the Homepage of your RC9800i, choose **Watch**.
- 2 Select the **DVD**  as the applicable source.
The combined control screen TV-DVD will appear.
The RC9800i will take care of switching your TV to the DVD input.
- 3 In the combined control screen for TV-DVD, choose the desired function.



Watching PVR

To watch PVR, perform steps 1 and 2 as described in 'Watching DVD'. Instead of selecting the DVD as the applicable source, select the PVR . In the combined control screen for TV-PVR, choose the desired function.



Watching Video Tape

To watch a videotape, perform steps 1 and 2 as described in Watching DVD. Instead of selecting the DVD as the applicable source, select the VCR . In the combined control screen for TV-VCR, choose the desired function.



Watching a Program Using EPG

Let's go back to the situation where you want to watch a movie on your flat screen TV in the living room. In the event that you don't know what is on, you may want to use the **Electronic Program Guide (EPG)** to find out tonight's program schedule.

The EPG displays television program information on the RC9800i. For example, you can check which programs Station XYZ is broadcasting today between 7 and 9 pm. Likewise, you can search for a sports program in any given time slot in the upcoming 7 days.

In order to be able to use the EPG, you must first perform some EPG service-related settings, see 'Electronic Program Guide (EPG)' beginning on page 46.

⚠ Attention! Some service-related settings are to be performed on a PC using a Web browser, NOT on the RC9800i. You must first perform these settings before you can use the EPG on the RC9800i.

After you have performed the service settings, you can activate the EPG on your RC9800i, download the television program data and start consulting them.

To access the EPG information on your RC9800i, proceed as follows:

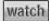
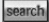
- 1 On the Homepage of your RC9800i, choose **Watch**.
- 2 Select the **internal tuner** , the **cable box** or the **satellite box** as the applicable broadcast source. A combined control screen will then appear.
- 3 Choose the **Guide** button.
The EPG screen will appear.

Note Make sure your date, time and time zone are correctly set. For further information on Date & Time Settings, please see page 17.


Good To Know: Electronic Program Guide

The EPG application uses lists (US) or grids (Europe) to display the program listings.



- **TV station call signs** are listed vertically according to their channel number. In grids, the horizontal axis represents time in 2-hour slots. In lists, time slots are displayed in 30-minute slots.
- Color coding is used for the various **program genres**.
- **Program information:** You can get additional program information by choosing the highlighted program, or choosing OK. See 'Consulting Program Information' below.
- **Watch button** : You can watch a highlighted program on television (if it is now playing) by choosing the Watch button. See 'Watching a Program from EPG' below.
- **Search button** : You can search for specific programs by genre(s) and by time and date, see 'Searching Programs' on page 34.

Navigating the EPG Screen

You can navigate the EPG screen by means of the cursor keys. You can also select any program simply by tapping the screen. To display another time slot, use the time selector .

⚠ Attention! *Moving the highlight from one program to another does NOT switch your TV to the newly selected program. To actually watch a program, see 'Watching a Program from EPG' below.*

Consulting Program Information

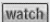
To obtain more information on a program, you can consult the Program Information Screen:

- 1 In the EPG grid/list, make sure that the highlight is on the program for which you want more detailed information (e.g. by moving the highlight with the cursor keys).
- 2 Tap the highlight or choose **OK**.
A screen with more detailed information will appear.

Note Use the **Back** hard key to go back to the previous EPG screen.

Watching a Program from EPG

From the various EPG screens you can make the RC9800i tune your TV to the program you want to watch. To do so, proceed as follows:

- 1 Make sure that the highlight is on the program that you want to watch (by moving the highlight with the cursor keys or simply tapping the program's name).
- 2 Choose the **Watch** button  (the Watch button is enabled only if the highlighted program is currently being broadcast).

Switching Channels

To switch channels either:

- use the channel up/down keys;
- choose a station call sign in any of the EPG screens;
- select a program and choose **Watch**.

In all of the above cases the RC9800i will tune your TV to the corresponding channel.

Searching Programs

To search for programs of a specific genre, proceed as follows:

- 1 In the EPG grid/list screen, choose **Search** .

The following screen will appear.



- 2 You can search on the basis of day, time and genre. Refine the search criteria by selecting the appropriate day, time and genres.

Tip You can choose multiple genres.

- 3 Choose **Go**.

The message 'Searching' will appear and after a few seconds a screen with the search results will appear.




Watching Digital Pictures From Your PC on Your TV

Imagine the following scenario:

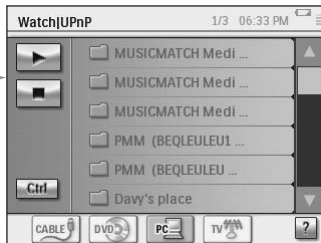
The grandparents are staying for the weekend. You're going to show them the photos of your child's birthday party.

Note Watching Digital Pictures on your legacy television requires a UPnP-compliant Media Adapter to convert the digital signals from your PC to analogue signals for your television. For more information on Media Adapters, see 'What You Should Know About Home Networking' on page 11.

You must also install the Philips Media Manager software. For further information, please check 'Installing the Software' on page 51.

- 1 On the Homepage of your RC9800i, choose **Watch**.
- 2 Select **PC** .


The combined control screen Watch|UPnP will appear.



- 3 Select the PC where the pictures are stored.

- 4 Browse through the **PC folders** and open the folder that contains the photos of your child's birthday party.





- 5 Choose a picture to be displayed on your television. Select one of the following options to browse through the pictures:
 - Choose each picture individually that you want to display from the list, and press **Play** (or press the **OK** key).
The picture that you selected will appear on the TV.
 - Choose the first picture you want to show from the list and press **Preview**. The picture that you selected will appear on the RC9800i, next press **Play**. To display the next picture on the television, choose the soft buttons **Next/Previous**  and press **Play**.
 - Run a slide show of all the pictures in one folder.
Choose **Ctrl** (Control) to display the slide show options.

Note Files that cannot be decoded are marked in gray. These files cannot be displayed on the current display device.




Watching Digital Pictures From Your PC on the RC9800i

Note To be able to watch digital pictures, you must install the Philips Media Manager software first. For further information, please check 'Installing the Software' beginning on page 51.

- 1 On the Homepage of your RC9800i, choose **Browse**.
- 2 Select the **PC** where the pictures are stored.
- 3 Browse the **PC folders** and open the folder that contains the pictures you want to watch on RC9800i.
- 4 Select the **picture** in the PC folder.
- 5 Choose the **Play**  soft button.
The selected picture is displayed on the RC9800i.
- 6 To go to the next/previous picture, choose the soft buttons **Next/Previous** .
-or-
Press the **Left/Right** cursor key.



Playing Games

To play Games, perform steps 1 and 2 as described in 'Watching DVD'. Instead of selecting the DVD as the applicable source, select **Games** .

Note The activity 'Playing Games' mainly serves the purpose of switching your display device to the appropriate input, so that you can view the content of your game console. Once the RC9800i has switched the display device to the appropriate input, to actually play games, you are advised to use the game pad that came with your game console.



Listening to a CD

You just bought a new CD and want to listen to it on the audio system in your bedroom. Until now, we've only addressed living room activities. As you're now going to use the RC9800i in your bedroom, you must first make the RC9800i aware of this change of room.


Good To Know: Changing the Room

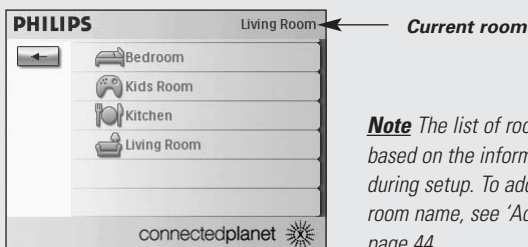
Check the top of the Homepage to see if the room indication matches the current location in which you're using the RC9800i. If not, change the room.

For example, suppose that the present controlled room is the living room, as displayed on the Homepage:



To change the room controlled by the RC9800i, proceed as follows:

- 1 On the Homepage, choose  to access the System Management Area. The 'System Management Area' screen will appear.
- 2 Choose **Select a Different Room**. The screen with the available rooms will appear.



Note The list of rooms that is displayed is based on the information that you provided during setup. To add a room, or edit the room name, see 'Add/Edit Rooms' on page 44.

3 Select Bedroom.

The Homepage reappears. Note that the room indication now reads 'Bedroom'.
Now, you're all set to start listening to the CD on your bedroom's audio system.

To listen to the CD in the bedroom, proceed as follows:

1 On the Homepage, choose Listen.


Note If you have multiple audio devices in the room, the RC9800i will prompt you to select the audio device you want to listen to.

2 Select CD from the list of sources.


The corresponding combined control screen will appear.
The CD starts playing.

You can control the Volume with the RC9800i's hard keys: **Volume Up/Down, Mute**.
The **Home** hard key allows you to switch to the RC9800i Homepage.


**Listening to a DVD**

To listen to a DVD, perform steps 1 to 2 as described in 'Listening to a CD' beginning on page 36. Instead of selecting your CD, select your DVD .


**Listening to Broadcast Radio**

- 1 On the Homepage of your RC9800i, choose **Listen**.
- 2 Select the **Radio** (via tuner)  as the device that holds the content.
The corresponding combined control screen will appear.
- 3 Select the **radio station** you'd like to listen to.

**Listening to Cable Radio**

To listen to cable radio, perform steps 1 to 3 as described in 'Listening to Broadcast Radio' on page 37. Instead of selecting the radio (tuner), select the Cable Radio .

**Listening to Satellite Radio**

To listen to satellite radio, perform steps 1 to 3 as described in 'Listening to Broadcast Radio' on page 37. Instead of selecting the radio (tuner), select the Satellite Radio .




Listening to Audio Files From Your PC via the Audio System


Note Listening to audio files on your non-networked audio system requires a UPnP-compliant Media Adapter to convert the digital signals from your PC to analogue signals for your audio system. For more information on Media Adapters, see 'What You Should Know About Home Networking' on page 11.

You must also install the Philips Media Manager software. For further information, please check 'Installing the Software' on page 51.

Instead of listening to a CD, you would like to enjoy some audio files from your PC.

To do so, proceed as follows:

- 1 Choose the appropriate room. See page 36 on how to do this.
- 2 On the Homepage of your RC9800i, choose **Listen**.
- 3 Select **PC**  as the device that gives input to your speakers.
- 4 Select the PC that holds your audio files.
- 5 Browse the **PC folders** and open the folder that contains the songs you want to listen to via the speakers.
The song list will appear.

- 6 Select the song you want to listen to and press the **OK** hard key or choose **Play** .
The song will start playing.




Listening to MP3 Files From Your PC via the RC9800i

Note To be able to listen to MP3 files, you must first install the Philips Media Manager software. For further information, please check 'Installing the Software' on page 51.

Imagine the following scenario:

While you're reading a book, you would love to have some music in the background. Instead of using your audio system, you will use your RC9800i to listen to your MP3 audio-files.

To do so, proceed as follows:

- 1 On the Homepage of your RC9800i, choose **Browse**.
- 2 Select the **PC**.
- 3 Browse the **PC folders** and open the folder that contains the songs you want to listen to on your RC9800i.
- 4 Select a song.
- 5 Choose the **Play**  soft button.
The song will start playing.

Note Enjoying music via the RC9800i can best be done via the cradle, connected by means of an audio extension cable to your audio system. See 'The Cradle as Digital Music Media Adapter' on page 8.

To listen to MP3 files from your PC via the Docked RC9800i, repeat steps 1 - 6 as described above and dock the RC9800i into the cradle. The RC9800i mutes and the audio-system plays the music.

Synchronization Wizard

When the RC9800i sends remote control commands to the various devices involved in an activity, it may happen that something blocks the 'line of sight' between the RC9800i and the controlled device (e.g. somebody passing in front of the controlled device). In that case the remote control signals will not reach the device they are supposed to control. Consequently, your system may be desynchronized:

- A device is powered off instead of on; or
- a wrong input has been selected; or
- a device has tuned to the wrong channel.

When such a situation occurs you can choose the **question mark icon** in the bottom right corner of the combined control screen. This will start the synchronization wizard, which brings up a screen that holds a few buttons that allow you, depending on the activity, to change inputs, change channels and turn devices on and off. With these buttons, you will be able to resynchronize your system.


Note Should you find out that your system is desynchronized every time that you launch a certain activity, even when there is nothing blocking the remote control signals of reaching the controlled devices, this indicates that the activity has not been correctly set up.

In this case, revisit the settings for that activity and the devices that are used for it, see 'Add/Edit A/V Devices' on page 44. Also check that remote control codes use the correct timing, see 'Changing other device settings' on page 46.

■ Individual Device Control


















With **Individual Device Control** you can control a single device **outside of the context of activities**. Individual Device Control screens offer you more and less frequently used functions than the combined control screens that you get when controlling activities.

Follow the steps below to use **Individual Device Control**:

- 1 On the Homepage, tap .
The System Management Area will appear.
- 2 Choose **Individual Device Control**.
A list of available devices that you can watch or listen to in the current room will appear.



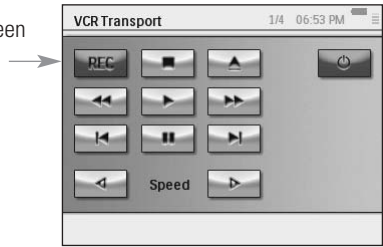
Depending on the information you provided during setup, the following devices may be available:

	Television		DVD-VCR combo
	Projector		Home Theater
	VCR		Receiver
	DVD Player		Amplifier
	DVDR (+HDD)		Tuner
	CD(R) Player		Media Center PC
	Satellite Receiver		Media Adapter
	Cable box		Game Console
	PVR		

Note To add devices or edit device names, see 'Add/Edit AV Devices' on page 44.

3 To check the remote control functions of a device, choose the device.

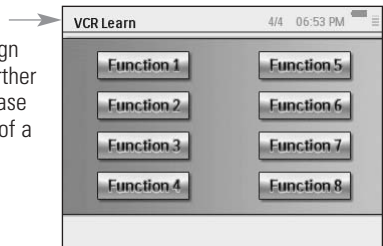
A series of screens with remote control functions for that device will become available. For example the following screen is one of the screens for a VCR:



4 To move through the series of screens, use the **Page** hard key.

For each device, there is also one screen with **8 user-defined buttons**.

These are buttons to which you can assign remote control functions yourself. For further information on user-defined buttons, please see 'Changing the remote control codes of a device' on page 45.



“Device Off”, “Activity Off” and “Room Off”

For your convenience, there are three types of buttons that allow you to turn devices off simply by pressing a button: **Device Off**, **Activity Off** and **Room Off**.

Device Off

When controlling an individual device, on the first page, there is an **Off** button that switches off the device you are currently controlling.

Activity Off

When in **Activities**, there is a similar button that switches off all devices involved in the activity.

Note *If you have multiple activities being performed simultaneously, the devices involved in other activities will stay on.*

Room Off

Finally, in the Home page, there is a **Room Off** button that switches off all devices in the room.


Adjusting the Settings

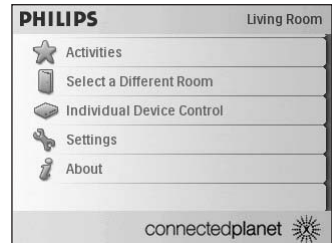
After the initial setup, whenever necessary, you can change the settings regarding:

- Your RC9800i;
- Your equipment e.g. editing, deleting or adding devices and rooms;
- The available Internet services.

■ Accessing the Settings

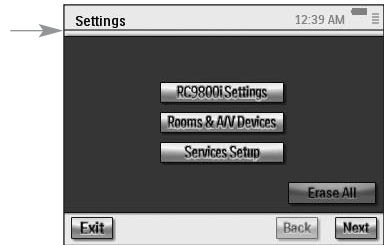
1 The Settings section can be accessed from the System Management Area.

To go to the System Management Area, choose  on the Homepage.



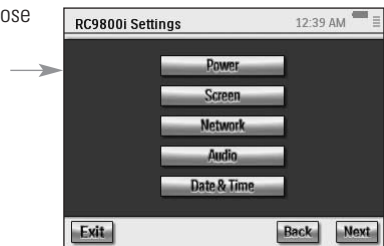
2 Choose **Settings**.

The 'Settings' screen will appear.



■ RC9800i Setup



To change the settings of your RC9800i, choose **RC9800i Settings**. The 'RC9800i Settings' screen will appear:



Power Settings



In the Power Settings you can define 2 settings:

- How many seconds the **key backlight** should stay on;
- After how many seconds the RC9800i should go to sleep (**Power Save**).

To change these settings, choose  or .

Screen Settings

Adjusting the Brightness

In the Screen Settings you can adjust the brightness of your touch screen by choosing  or .

Calibrating

If you notice that after some time the touch screen no longer responds accurately to the screen areas you are touching, you can recalibrate the touch screen. To do so, tap very precisely the center of the crosshairs that appear in the four corners of the screen. The RC9800i may repeat this process a number of times, until its screen is accurately calibrated.

Network Settings

- 1 In the 'RC9800i Settings' screen, choose **Network**.
The 'RC9800i Network Settings' screen will appear.
- 2 Perform the steps as explained in 'Network Settings' on page 15.
- 3 Choose **Back**.

Audio Settings

In the Audio settings you can change the following items by choosing  or .

- Touch screen Volume: volume produced when tapping the RC9800i soft buttons;
- Hard Key Volume: volume produced when pressing the RC9800i hard keys;
- Alert Volume: volume produced by the RC9800i when an error occurs.

You can test the changes you have made by choosing **Try**.

Date & Time

- 1 On the screen 'RC9800i Settings', choose **Date & Time**.
The 'Date & Time Settings' screen will appear.
- 2 Perform the steps as explained in 'Date & Time Settings' on page 17.
- 3 Choose **Back**.

Set Up Rooms & A/V Devices

To change your equipment settings, choose **Rooms & A/V Devices**. The 'Rooms & A/V Devices' screen will appear.

You can choose between two different options:

- Add/Edit Rooms;
- Add/Edit A/V Devices.



Add/Edit Rooms

- 1 On the 'Rooms & A/V Devices' screen, choose **Add/Edit Rooms**.

The 'Set Up Rooms' screen will appear.



- 2 To **add a room**, choose **Add**.

A screen will appear in which you can select a room type and optionally rename it.

-or-

To **edit room information**, select a room from the list and choose **Edit**.

A screen will appear in which you can change the room type and, if desired, rename it.

-or-

To **delete a room**, select a room from the list and choose **Delete**.

The room will be deleted from the list.

- 3 Choose **Back**.

⚠ Attention! *If you delete a room, all setup information that you provided regarding the devices in the room will be deleted. It is therefore advisable to first assign these devices to another room before deleting a room.*

Add/Edit A/V Devices

- 1 On the 'Rooms & A/V Devices' screen, choose **Add/Edit A/V Devices**.

The 'A/V Devices Setup' screen will appear.



- 2 Select a **room**.

The available devices for the selected room appear in the list. Now you can add, edit or delete devices. After having modified device information you can (re)define the activities in which these devices are involved (the 'Activities' button turns green).

Adding a Device

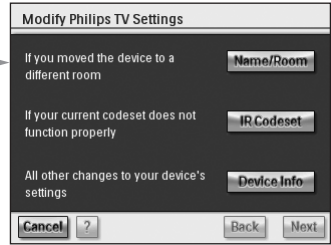
To add a device, perform the steps as explained in 'Set Up Devices' on page 19.

Deleting a Device

- 1 On the screen 'Set Up A/V Devices', choose the device you want to delete. The selected device is highlighted.
- 2 Choose **Delete**.

Moving a Device

- 1 Select a device and choose **Edit**.
The 'Modify a Device' screen will appear.
- 2 Choose **Name/Room**.
The 'Modify Device Assignment' screen will appear.
- 3 In the **Room** list, select the room to which you want to reassign the device to.



Note If you want, you can optionally also rename the device.

- 4 Choose **OK**.
The RC9800i will display the 'Set Up A/V Devices' screen. The device is now reassigned to the room you selected.

Changing the remote control codes of a device

- 1 On the screen 'Set Up A/V Devices', select a device and choose **Edit**.
The 'Modify a Device' screen will appear.
- 2 Choose **IR Codeset**.
The 'Codes Setup' screen will appear.



The screen displays 3 possibilities to change your IR settings:

- If some of your buttons don't work and/or you want to learn/replace codes, use the **Try & Learn** method. To do so, please perform steps 3 - 4 as described in 'Learn & Match' beginning on page 21.
- If you want to assign codes to user-defined buttons yourself, use the **User buttons** method. To do so, take the following steps:

- 1 Choose **User buttons**.
The 'Try & Learn - User Defined Buttons' screen will appear.
Note All functions are red, since they are all unknown to the device.
- 2 Select a **function**.
The selected function will be highlighted.
- 3 Choose **Learn**.
Learn the function from your device's original remote control.
Note To test the function and see if the device reacts, choose **Try**.

- If you want to choose a different codeset, use the **Select & Try method**. To do so, perform the steps described in 'Select & Try' beginning on page 23.

Changing other device settings

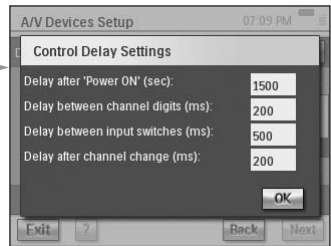
- 1 On the screen 'Set Up A/V Devices', select a device and choose **Edit**.
The 'Modify a Device' screen will appear.
- 2 Choose **Device Info**.
The 'Modify Device Details' screen will appear.

The Device Info Wizard will guide you through a number of settings for the device that you have selected. Choose **OK** to start the wizard.

Before proceeding with the wizard you can also modify the IR control delays: different devices

of different brands have different timings for reacting when you turn on the device, switch channels and select input. Normally the timing of these actions is automatically defined during the initial setup. In the unusual event that this fails, you can edit the delays manually. To do so, proceed as follows:

- 1 Choose **Control Delays**.
The 'Control Delay Settings' screen will appear.
- 2 To edit the delays, click on the field.



Electronic Program Guide (EPG)

Your RC9800i comes with a 1 year free-of-charge subscription to the Philips Internet EPG Service. Before you can use the EPG application on the RC9800i, you first must perform a few service-related settings.

⚠ Attention! *Some service-related settings are to be performed on a PC using a Web browser, NOT on the RC9800i.*

Service-related Settings on the PC

The following service-related settings are to be done on the PC:

- Subscribing to the EPG service;
- Personalizing your subscription, i.e. choosing the TV stations for which you want EPG data.

Subscribing to the EPG Service

- 1 On your PC, go to <http://www.homecontrol.philips.com>.
- 2 Follow the 'Philips Internet EPG Service' link.
- 3 Register and choose a username and password.

- 4 Choose the link to create a **subscription** and follow the instructions.
- 5 In the screen that summarizes your subscription details, choose **Next**. The 'Create a subscription – Activation Key' screen will appear. This screen contains your activation key. Make a note of this key and choose Proceed to Personalization.

Tip You will need the activation key later on to activate the EPG on your RC9800i.

Personalizing the EPG

You can **personalize** your EPG by indicating the stations you want to include in the EPG. This list of stations is called a **lineup**. The EPG application on your RC9800i will download and display only stations that are in the lineup(s) that you have defined, and leave out stations that you don't receive or are not interested in.

On your PC, perform the following steps to define your lineup(s). A wizard will guide you through:

- 1 In the 'Create a subscription – Activation Key' screen, choose **Proceed to personalization**.
- 2 In the Personalization Home Page, choose **Add a lineup**.
- 3 (US users only) Enter your ZIP code.
- 4 Choose the appropriate TV signal source (Cable, Satellite, Antenna), then choose **Next**.
- 5 (US users only) If applicable, choose your provider.
- 6 Select the stations that you want EPG data for (European users: also indicate the corresponding channel number). When done choose **Finish** (European users: Choose **Next**).
- 7 (European users only) When satisfied with the selection you have made, choose **Finish**. Otherwise choose **Back**.

If you have multiple TV signal sources, e.g. a satellite receiver and a cable box, you can define additional lineups (up to 4). In this case repeat steps 2 to 5 for all your TV signal sources. When you have added all lineups, in the Personalization Home Page, choose **Advanced** and assign a lineup ID to every TV signal source. Make a note of the lineup IDs that you have assigned, as you will need them when doing the EPG-related settings on the RC9800i.


Settings on the RC9800i

Once you have created an EPG subscription and received an activation key, you must bind it to link your RC9800i to the subscription you made in order to make the EPG available on the RC9800i. This so-called "Activating the EPG" is something that you only have to do once.

Activating the EPG on the RC9800i

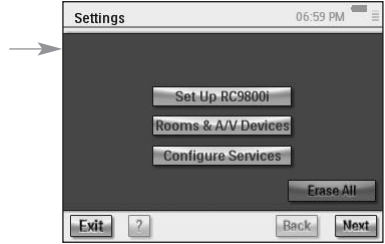
Note Make sure that your WiFi connection to the Internet is operational and that you have your Activation Key available.

To activate the EPG on your RC9800i, proceed as follows:

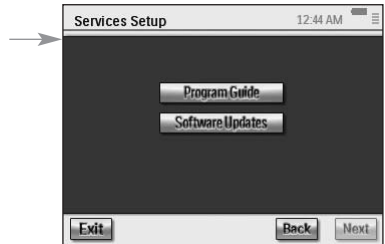
- 1 On the Homepage, choose .
The System Management Area will appear.



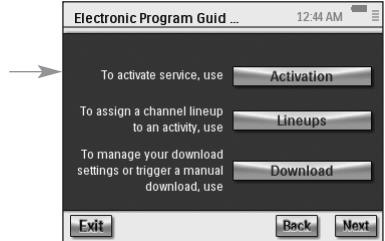
- 2 Choose **Settings**.
The 'Settings' screen will appear.



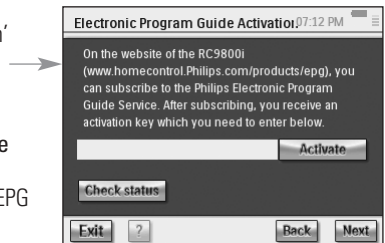
- 3 Choose **Services Setup**.
The 'Services Setup' screen will appear.



- 4 Choose **Program Guide**.
The 'Electronic Program Guide Service Setup' screen will appear.



- 5 Choose **Activation**.
The 'Electronic Program Guide Activation' screen will appear.



- 6 Enter your Activation Key and choose **Activate**.
The RC9800i will now be linked to your EPG subscription on the EPG web site.

If the activation is successful, the message 'Congratulations your EPG subscription is now activated' will appear.

Note If you receive a message saying that the EPG activation has failed, choose Done. The 'Setup Program Guide Service' screen will appear again. In this case, consult 'Tips and Troubleshooting' on page 54.

If you have only one TV signal source, your RC9800i will now be ready to download program data from the Philips Internet EPG Service. See 'Downloading EPG Data' below. If you have multiple TV signal sources, you should first assign to each of these sources the lineup IDs that you defined when personalizing your subscription. See 'Assigning Lineups to Devices' on page 50.


Downloading EPG Data

Note Before you can start downloading EPG data you must activate the EPG on your RC9800i (see page 47) and, in the event of multiple TV signal sources, you must assign lineup IDs (see 'Assigning Lineups to Devices' on page 50).

Downloading EPG data is a completely automated process. You, as a user, need not do anything: the EPG data, stored on your RC9800i, is automatically updated over the Internet, every night between 1.00 AM and 7.00 AM.

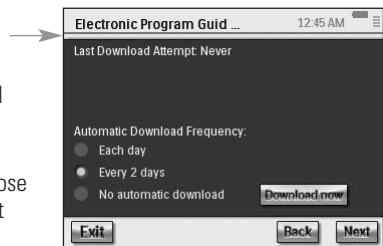
⚠ Attention! Make sure that your RC9800i is within reach of your wireless network and that it is sufficiently charged. If battery power is too low, the RC9800i will postpone downloading of EPG data.

If you wish, you can update the EPG data on the spot. In order to do so, proceed as follows:

- 1 On the Homepage, choose . The System Management Area will appear.
- 2 Choose **Settings**. The 'Settings' screen will appear.
- 3 Choose **Services Setup**. The 'Services Setup' screen will appear.
- 4 Choose **Program Guide**. The 'Electronic Program Guide Service Setup' screen will appear.
- 5 Choose **Program Guide**. The 'Electronic Program Guide' screen will appear.
- 6 Choose **Download**. The following screen will appear:

This screen displays the latest download status, and allows you to define the RC9800i's download pattern.


If you want to refresh the EPG data, choose **Download Now**. The RC9800i will start downloading EPG data from the Philips Internet EPG Service.

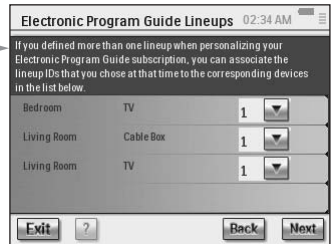


Assigning Lineups to Devices

If you have multiple TV signal sources and accordingly defined multiple lineups when personalizing your EPG subscription, you should now assign your chosen lineup IDs to the corresponding devices in your home.

Note Before attempting to assign lineups to devices, make sure that you have properly set up the RC9800i to control the activities that involve the TV signal sources to which you are going to assign lineup IDs (e.g. a cable box, the TV's built-in tuner, etc.). To set up activities, see 'Set Up Activities' on page 25.

- 1 On the Homepage, choose .
The System Management Area will appear.
- 2 Choose **Settings**.
The 'Settings' screen will appear.
- 3 Choose **Services Setup**.
The 'Services Setup' screen will appear.
- 4 Choose **Program Guide**.
The 'Electronic Program Guide Service Setup' screen will appear.
- 5 Choose **Lineups**.
The 'Electronic Program Guide Lineups' screen will appear. This screen contains a list of TV signal sources.
- 6 For every TV signal source, **select the value in the drop down list** that corresponds to the lineup ID that you chose for this TV signal source when you personalized your EPG subscription.
- 7 When you have finished, choose **Next**.



Using the EPG

To learn more about how to use the EPG on the RC9800i, please refer to 'Watching a Program Using EPG' on page 32.

Installing the Software

Note You need Windows 2000 or Windows XP on your PC to use this software.

Installing Philips Media Manager

This software makes the music, photo and movie files on your computer available for transfer to a Philips Connected Planet device.

- 1 Place the RC9800i CD in your PC's CD or DVD drive.
The CD will start automatically.

Note If the CD does not start automatically, double-click **My computer**. Then choose the **CD-ROM drive** icon, and, finally, choose the **Setup.exe** to start the CD.

- 2 In the menu that appears, choose to install **Philips Media Manager** and follow the on-screen instructions.
- 3 To start the program, choose **Start > Programs > Philips Media Manager**.
When opening the Philips Media Manager for the first time, you will be asked if you want to add a folder and scan for media files.
- 4 Choose **Add**.
- 5 Select a folder or one or more media files and choose **Open** to add the selected folder or files to the Media Manager window.

Note When you close the Media Manager window, its icon remains active in the status notification area (lower right-hand corner of the desktop). This icon must remain visible. Double-clicking the icon opens the Media Manager window.

Advanced Philips Media Manager Use

Philips Media Manager on More PCs

The Philips Media Manager can run on more than one computer at the same time. To do so, proceed as follows:

- 1 Install the Philips Media Manager in the same way as you did for the first computer. Perform steps 1 to 5 of 'Installing Philips Media Manager'.
- 2 In the Media Manager window, choose **Settings**.
- 3 Choose the **Server** tab and change the Server name.

Note This server name will appear in the top menu when you browse the directories holding media. This way, you can keep separated all of the computers in the network that are simultaneously running the Philips Media Manager.

Organizing Media Files

To help you organize and sort your media files, right-click a music track, photo or movie and select **Edit Media Information**.


Creating Playlists

To create a playlist, right-click a music track or movie and select **Add to Playlist**.

Upgrading the Firmware







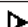





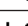
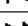
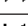
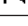
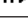
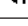
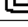
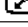





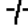





You can upgrade the RC9800i firmware via USB.

⚠ Attention! Dock the RC9800i into its cradle while upgrading its firmware.

- 1** On your PC, open your Internet browser and go to <http://www.homecontrol.philips.com>. Follow the link to the software upgrades section.
- 2** Download the RC9800i Firmware Update Tool onto your PC.
- 3** Connect the RC9800i to your PC by means of the USB cable.
- 4** Dock the RC9800i in its cradle.
- 5** On the Homepage of the RC9800i, tap . The System Management Area will appear.
- 6** Choose **Settings**.
The 'Settings' screen will appear.
- 7** Choose **Services Setup**.
The 'Services Setup' screen will appear.
- 8** Choose **Software Updates**.
The 'Software Updates' screen will appear.
- 9** Choose **USB Update**.
- 10** Start the **RC9800i Firmware Update Tool** on your PC.
- 11** Follow the instructions on the PC screen and on your RC9800i.
A series of messages will appear on the PC monitor. When the firmware is upgraded, the RC9800i will reboot automatically.

Tip You can check in the **About** area that a newer firmware is installed and running on your RC9800i.

List of Symbols

	Pause
	Stop
	Play; normal speed
	Play reverse; normal speed
	Fast forward
	Fast reverse
	Slow forward
	Slow reverse
	Eject
	Recording
	Navigate (down, right, left, up)
	Next track
	Previous track
	Fast forward to index
	Rewind to index
	Forward Frame by frame
	Reverse Frame by frame
	Picture-in-picture shift
	Picture-in-picture swap
	Teletext mode
	Page enlargement
	TV and Teletext mixed
	Last viewed program; previous program
	Stand-by
	Single or multi-digit selection
	Movie expand, change screen size/aspect ratio
	Actual time on screen
	EPG/ Electronic Program Guide
	Sound muting
	Additional information on screen
	Television mode

Tips and Troubleshooting

You can quickly solve most problems that you encounter with the RC9800i by following the advice in this chapter.

RC9800i device

My RC9800i switches off automatically

If your RC9800i is not being used, it will switch to standby mode. To wake the RC9800i, see 'Everyday Use' on page 6.

You can set the amount of time the RC9800i waits before going into sleep mode. For further information, see Power Settings on page 42.


My RC9800i doesn't respond

When the battery is running empty, your RC9800i may not respond anymore. You should then recharge it, see 'Charging the RC9800i' on page 8.

If after recharging your device still does not respond, you may have to reset it. Under normal circumstances you'll never have to reset the RC9800i. However on rare occasions, if the touch screen freezes or if you notice unusual behavior, you may need to perform a reset. Switch the On/Off Switch off and, after a few seconds, on again. The Homepage will appear. The On/Off Switch is located at the backside of the RC9800i, see page 6.

The soft buttons on my touch screen do not respond properly


If after some time the touch screen doesn't respond correctly to the area that you are touching, you should recalibrate the screen. To calibrate the touch screen, take the following steps:

- 1 On the homepage, choose .
The System Management Area will appear.
- 2 Choose **Settings**.
The 'Settings' screen will appear.
- 3 Choose **RC9800i settings**.
The 'RC9800i Settings' screen will appear.
- 4 Choose **Screen**.
- 5 Choose **Calibrate screen**.
- 6 Very precisely tap the crosshairs that appear in the four corners of the screen.
The RC9800i may repeat this process a number of times until its screen is accurately calibrated.

How do I clear all settings on my RC9800i?

Reverting to the original configuration or factory settings restores the settings that were on your RC9800i when you purchased it. To revert to Factory Settings, take the following steps:

⚠ Attention! *Reverting to factory settings will delete all rooms and devices information that you provided during the earlier setups.*

- 1 On the Homepage choose .
The 'System Management Area' screen will appear.
- 2 Choose **Settings**.
The 'Settings' screen will appear.
- 3 Choose **Erase All**.
A screen asking for confirmation will appear. If you are sure you want to erase all settings, choose **OK**. Otherwise choose **Cancel**.
- 4 The RC9800i will restart and launch the initial setup wizard.

I don't have a WiFi network at home. Can I use the RC9800i as a remote?

Of course you can. The RC9800i can also be used as a remote control for your non-networked audio-video devices. For further information, please check 'Controlling Legacy Audio/Video Devices' beginning on page 10.

Can I recharge the RC9800i any time I want?

Yes, you can. The RC9800i is equipped with a Li-polymer battery, which cannot be overcharged, and can be charged even when the battery is not fully empty.

How can I clean my RC9800i?

When cleaning the RC9800i, remember these instructions:

- Use a soft, damp cloth to clean your RC9800i.
- If the touch screen is dirty, clean it with a soft cloth moistened with a diluted window-cleaning solution.
- Do not use a corrosive detergent or an abrasive sponge.
- Avoid the use of excessive water.

Remote control codes

The devices do not respond to the commands I send

To use your RC9800i as a remote control, you must make sure that it uses the correct remote control codes. To assign remote control codes, refer to 'Determining Remote Control Codes' beginning on page 21.

I can't find the right set of codes for my device

If you can't find the right set of codes, please use the Select & Try procedure. For further information, refer to 'Select & Try' on page 23.

I have a function on my old remote control that I can't find on the new one

You can make use of user-defined buttons. These are buttons to which you can assign remote control codes yourself. For each device, you have 8 of these buttons available. For further information, please check 'Individual Device Control' on page 40.

Rooms and Devices

I can't add a device

If you can't add a device, you must check whether at least 1 room is defined. Refer to 'Add/Edit Rooms' on page 44 to check which rooms are defined.

My brand is not in the list! What do I do?

If the brand of your device is not in the list, simply choose another brand. The algorithms that the RC9800i uses are very powerful and may still be capable of finding a set of codes that works for your device.

The room name already exists

You can use a room name only once. Either choose another name or rename the room that currently has the name that you want to use. For more information, see 'Add/Edit Rooms' on page 44.

Firmware upgrades

The USB Firmware Upgrade Tool does not work

If you can't download the Firmware Upgrade, verify that your RC9800i is fully charged or docked in the cradle, and that the USB cable is connected. Perform steps 1 to 9 on page 52 and verify that your PC detects the device: on your PC choose **My Computer** and verify that your RC9800i is displayed in the list.

When upgrading software, the messages appear in the wrong language

- 1 On your PC, open your Internet browser and go to <http://www.homecontrol.philips.com>. Follow the link to the software upgrades section.
- 2 Download and start the RC9800i Firmware Upgrade Tool;
- 3 Connect the RC9800i to your PC via the USB cable;
- 4 Switch the RC9800i off and on again, and keep the **Back** key pressed while the device starts up;
- 5 Choose your language;
- 6 Follow the instructions on the PC screen and on your RC9800i.

■ EPG

I can't activate the EPG

If you can't activate your EPG, check the following:

- Is your wireless network operational?
- Can your device access the wireless network? See 'Network Settings' on page 15;
- Have you entered the correct activation code? See 'Electronic Program Guide (EPG)' on page 46.

I have activated the EPG application on my RC9800i, but it still doesn't work

If the activation of the EPG was successful, but the EPG application still doesn't work, check the following:

- Have you assigned your EPG lineup? See 'Assigning Lineups to Devices' beginning on page 50;
- If there are no EPG Data displayed in the EPG application, check whether your Time, Date and Time Zone settings are correct. See 'Date & Time Settings' on page 17;
- Have valid EPG data been downloaded? To find out how to consult the EPG download status, see 'Downloading EPG Data' on page 49. If the download is in progress, allow time for the EPG to finish downloading.
- Are the search criteria correct? If no items have been found in the EPG data, change your search criteria/filters. See 'Searching Programs' on page 34.

Note If any download errors occurs, the Download Status screen will indicate the error.

Online Information

Consult <http://www.homecontrol.philips.com> to find the latest information on your RC9800i. You will find, amongst other material, the most up to date version of this 'Tips and Troubleshooting' chapter.

Support for Your Philips Connected Planet Product

Philips products have been designed and manufactured in accordance with the highest quality standards. If your Philips Connected Planet product is not working correctly, we recommend that you check your user manual to verify that your product is properly connected and configured. The website for Connected Planet support (<http://www.philips.com/support>) offers you all of the information you need to optimally enjoy your product – this includes help to get started, frequently asked questions and interactive troubleshooting.

Technical Specifications

General Specifications

<i>Operating temperature:</i>	5°C to 45°C (41°F to 113°F)
<i>Storage temperature:</i>	-25°C to +60°C (13°F to 140°F)
<i>Dimensions:</i>	102 (W) x 150 (L) x 26 (H) mm 4.01 (W) x 5.90 (L) x 1.02 (H) inch
<i>Weight:</i>	225 g (7.94 oz)

Display	<i>Color active matrix touch screen TFT LCD with white LED backlight (320 x 240, 16bit color) Diagonal screen size: 3,5 inch</i>
----------------	--

Infrared (IR) capabilities

<i>Transmitted code:</i>	RC5, RC6 and learnable format
<i>Infrared wavelength:</i>	950 nm ± 50 nm
<i>IR learning distance:</i>	2,5 - 10 cm (1-4 inch)
<i>Learning frequency:</i>	56 KHz carrier frequency and 455 KHz for some formats (B&O)

Memory	32 MB flash memory 32 MB SDRAM
---------------	-----------------------------------

Interfaces	USB port for PC connection Analog 3.5 mm Audio Line Out port on cradle
-------------------	---

Wireless Connectivity

<i>Standards:</i>	IEEE 802.11b WiFi module embedded
<i>Wireless Data Rate:</i>	Up to 11 megabits per second (Mbps)
<i>Frequency Band:</i>	2.4 gigahertz (GHz)

Battery

<i>Embedded Li-Pol battery:</i>	1750mAH capacity (replaceable by a Philips Service Center)
<i>Nominal battery voltage:</i>	3.7 V (Li-Pol battery pack)
<i>Operating voltage:</i>	+ 4.2 → 3.0 V (Li-Pol battery pack)
<i>Battery lifetime (typical):</i>	3hrs continuous use
<i>Standby time (typical):</i>	14 days

Power Management	Automatic power off Battery low indication Battery charging indication
-------------------------	--

Multimedia Application

<i>Playback formats:</i>	MP3, m3u
--------------------------	----------

Still Picture Playback	Supported picture compression format: BMP, GIF, JPEG
-------------------------------	--

⚠ Attention! The specifications and design of this product are subject to change without notice.

Environmental Information

All redundant packaging has been omitted. We have done our utmost to make the packaging easily separable into two materials: Cardboard and PET. Your set consists of materials that can be recycled if disassembled by a specialized company.

Please observe the local regulations regarding the disposal of packaging, exhausted batteries and old equipment.

Battery Disposal



Your device uses a rechargeable Li Polymer battery. Do not dispose the battery with household waste. Contact your local waste disposal agency for the address of the nearest battery deposit site.

Communications Regulation Information

FCC Declaration of Conformity

This device complies with Part 15 of the FCC Rules. Operation is subject to the following two conditions:

- This device should not cause harmful interference.
- This device must accept any interference received, including interference that may cause undesired operation.

This equipment has been tested and found to comply with the limits for a Class B digital device, pursuant to part 15 of the FCC rule.

These limits are designed to provide reasonable protection against harmful interference in residential installations. This equipment generates, uses, and can radiate radio frequency energy and, if not installed and used in accordance with the instructions, may cause harmful interference to radio communications.

However, there is no guarantee that interference will not occur in a particular installation. If the equipment does cause harmful interference to radio or television reception, which can be determined by turning the equipment off and on, the user is encouraged to try to correct the interference by using one or more of the following measures:

- Reorient or relocate the receiving antenna.
- Increase the separation between the equipment and receiver.
- Connect the equipment into an outlet on a different circuit from the receiver.
- Consult the retailer or an experienced radio/TV technician for help.

⚠ CAUTION *User changes or modifications not expressly approved by the party responsible for compliance may void the user's authority to operate the equipment.*

Notice for Canada / Remarque pour le Canada

This Class B digital apparatus complies with Canadian ICES-003.

Cet appareil numérique de la Classe B est conforme à la norme NMB-003 du Canada.

Europe – EU Declaration of Conformity

Royal Philips Electronics hereby declares that this universal remote control is in compliance with the essential requirements and other relevant provisions of the Radio & Telecom Terminal Equipment Directive (R&TTE Directive) 1999/5/EC:

- Radio: EN 300 328
- EMC: ETSI EN 301 489-1, ETSI EN 301 489-17
- Safety: EN60950

Finnish	Philips Consumer Electronics, Remote Control Systems vakuuttaa täten että RC9800i tyyppinen laite on direktiivin 1999/5/EY oleellisten vaatimusten ja sitä koskevien direktiivin muiden ehtojen mukainen.
Dutch	Hierbij verklaart, Philips Consumer Electronics, Remote Control Systems dat het toestel RC9800i in overeenstemming is met de essentiële eisen en de andere relevante bepalingen van richtlijn 1999/5/EG.
French	Par la présente, Philips Consumer Electronics, Remote Control Systems, déclare que l'appareil RC9800i est conforme aux exigences essentielles et aux autres dispositions pertinentes de la directive 1999/5/CE
Swedish	Härmed intygar, Philips Consumer Electronics, Remote Control Systems, att denna RC9800i står i överensstämmelse med de väsentliga egenskapskrav och övriga relevanta bestämmelser som framgår av direktiv 1999/5/EG.
Danish	Undertegnede Philips Consumer Electronics, Remote Control Systems erklærer herved, at følgende udstyr RC9800i overholder de væsentlige krav og øvrige relevante krav i direktiv 1999/5/EF
German	Hiermit erkläre Philips Consumer Electronics, Remote Control Systems die Übereinstimmung des Gerätes RC9800i mit den grundlegenden Anforderungen und den anderen relevanten Festlegungen der Richtlinie 1999/5/EG.
Greek	ΜΕ ΤΗΝ ΠΑΡΟΥΣΑ Philips Consumer Electronics, Remote Control Systems ΔΗΛΩΝΕΙ ΟΤΙ RC9800i ΣΥΜΜΟΡΦΩΝΕΤΑΙ ΠΡΟΣ ΤΙΣ ΟΥΣΙΩΔΕΙΣ ΑΠΑΙΤΗΣΕΙΣ ΚΑΙ ΤΙΣ ΛΟΙΠΕΣ ΣΧΕΤΙΚΕΣ ΔΙΑΤΑΞΕΙΣ ΤΗΣ ΟΔΗΓΙΑΣ 1999/5/ΕΚ.
Italian	Con la presente Philips Consumer Electronics, Remote Control Systems dichiara che questo RC9800i è conforme ai requisiti essenziali ed alle altre disposizioni pertinenti stabilite dalla direttiva 1999/5/CE.
Spanish	Por medio de la presente, Philips Consumer Electronics, Remote Control Systems, declara que el RC9800i cumple con los requisitos esenciales y cualesquiera otras disposiciones aplicables o exigibles de la Directiva 1999/5/CE
Portuguese	Philips Consumer Electronics, Remote Control Systems declara que este RC9800i está conforme com os requisitos essenciais e outras disposições da Directiva 1999/5/CE.

Declaration of Conformity (DoC)

The Declaration of Conformity can be found at <http://www.homecontrol.philips.com/products/DoC>

Marking

In accordance with CE marking regulations, the CE mark, the notified body number and the class 2 identifier are added to the equipment:

CE 0682 Ⓢ

This device can be used in:								
FR	UK	DE	DK	SV	ES	GR	PT	CH
AT	BE	FI	IRE	IT	LU	NL	NO	

Glossary

Bridge device Bridge devices are devices that convert signals. For example, a Media Adapter is a bridge device. It converts PC residing digital video, pictures or audio files to analogue signals. The Media Adapter receives input from the PC and transforms it into a number of analogue video and audio outputs that feed into classical non-networked TVs or audio systems.

DHCP When a device communicates with another device, it must have a unique address to identify itself. Such an address is called an IP address. DHCP or Dynamic Host Configuration Protocol is an Internet Protocol that manages and automates the assignment of IP addresses on the network (along with distributing information about the network's broadcast address, netmask, gateway address and DNS addresses). A device that uses DHCP, requests an open address from a DHCP server each time it makes a connection to that server. An alternative is to use a fixed IP address (see IP address).

DMA *Digital Media Adapter* A Digital Media Adapter is a wireless digital device that allows movies, pictures or music files to be streamed from a PC to non-networked audio-devices like classical TVs and audio systems.

DNS DNS stands for Domain Name Server. A domain name is a meaningful and easy-to-remember name for an Internet address e.g. www.homecontrol.philips.com. A Domain Name Server translates domain names to IP addresses. (see IP address)

EPG EPG stands for Electronic Program Guide. EPG is the electronic equivalent of a printed television program guide.

Gateway A gateway is a network point that acts as an entrance to another network. More specifically, a gateway connects two networks that use different protocols. This way, gateways make it possible for members of one network to make use of another network.

Hard Key Hard keys refer to the buttons on the right hand side of the RC9800i's touch screen.

IR IR or Infrared is used to control audio-video devices. For instance, when you press a button on a TV's remote control, the remote control sends an Infrared (IR) signal to the TV. The TV receives this signal and executes the command.

IP address When a device communicates with another device, it must have a unique address to identify itself. Such an address is called an IP address, e.g. 192.168.100.1. When you add a device to a network, you can either assign a fixed IP address to it or you can use DHCP (see DHCP).

Netmask A netmask masks the network part of an IP address so that only the host computer part of the address remains. A frequently used netmask is 255.255.255.0.

NTP NTP stands for Network Time Protocol. This protocol is used to synchronize date and time information in a network of computers.

PVR PVR stands for Personal Video Recorder. This device is also known as a DVR, or Digital Video Recorder.

SSID A Service Set Identifier is a sequence of characters that uniquely identifies a wireless local area network. This name allows devices to connect to the desired network when multiple independent networks operate in the same physical area.

UPnP Universal Plug and Play (UPnP) is a standard that uses Internet and Web protocols to enable devices such as PCs, peripherals, intelligent appliances, and wireless devices to be plugged into a network and automatically know about each other. With UPnP, when you plug a device into the network, the device will configure itself, acquire a IP address, and use a discovery protocol based on the Internet's Hypertext Transfer Protocol (HTTP) to announce its presence on the network to other devices.

USB USB stands for Universal Serial Bus. It is a plug-and-play interface between a computer and add-on devices (such as audio players, joysticks and printers). With USB, a new device can be added to your PC without having to add an adapter card or turn your computer off.

WAP Wireless Access Point or WAP is the center of a wireless home network. All communication between devices in a wireless network is carried out via the WAP.

WEP Wired Equivalent Privacy (WEP) is a security protocol that provides a wireless local area network (WLAN) with a high level of security and privacy by encoding all communication in the network

WiFi WiFi or Wireless Fidelity is a term that is used for certain types of wireless local area networks (WLANS) that make use of the 802.11 standard.

WPA WPA or WiFi Protected Access is a network communication standard that increases the level of data protection (encryption) and access control (authentication) for existing and future WiFi wireless networks.

Index

- Activity
 - listen, 13
 - watch, 13
- Activity-Based Control, 12
- Add Device, 44
- Audio settings, 43
- Autoscan, 22
- Backlight
 - settings, 42
- Battery
 - level, 8
- Brightness, 43
- Calibrate, 14, 43
- Change Remote control codes, 45
- Channel switching, 24
- Charging, 8
- Combined control screen, 30, 32
- Communications Regulation Information, 59
- Connected device, 11
- Cradle, 8
 - as Media Adapter, 8
- Date settings, 17, 43
- Device
 - add, 44
 - change, 44
 - change Remote control codes, 45
 - legacy device, 10
 - move, 45
 - settings, 43
- DHCP, 16, 61
- DNS, 61
- dynamic IP address, 16
- Encryption, 16
- Environmental Information, 59
- EPG, 46
 - activation, 47
 - display, 50
 - download data, 49
 - information screen, 33
 - line up, 50
 - navigate, 33
 - Personalize, 47
 - search, 34
 - Subscribe, 46
 - switch a channel, 34
- Equipment
 - add, 44
 - change, 44
- EULA, 14
- Firmware, 52
- Gateway, 61
- Hard keys, 7
 - Back, 27
 - Channel, 7
 - Cursor, 7
 - Mute, 7
 - Page, 7
 - Volume, 7
- Home networking, 11
- Individual Device Control, 40
- Input selection, 24
- IP, 61
- IP address, 61
- Learn & Match, 21
- Legacy device, 10
- Listen, 13
 - CD, 36
 - MP3 files, 38
- Location
 - select, 15
- Media Adapter, 34, 38
- Move Device, 45

- Netmask, 61
- Network Activity Indicator, 8
- Network settings, 15, 43
- Network Time Sync, 17
- On/Off Switch, 6
- Online, 57
- Peer-to-peer, 12, 15
- Power
 - power adapter, 8
 - power on, 6
 - settings, 42
- Power on, 24
- Proxy
 - server, 16
 - settings, 16
- PVR, 60
- Red buttons, 23
- Remote control codes
 - autoscan, 22
 - change, 45
 - determine, 21
 - learn, 21
 - select & try, 23
- Room
 - add, 44
 - change, 36, 44
- Screen settings, 43
- Security Settings, 16
- Settings
 - access, 42
 - Activity, 25
 - audio, 43
 - backlight, 42
 - date, 17, 43
 - network, 15, 43
 - proxy, 16
 - RC9800i, 14
 - screen, 43
 - time, 17, 43
 - time zone, 17
 - set-up, 13
 - SSID, 15, 60
 - Standby mode, 6, 8
 - Support, 56
 - Synchronize
 - network time, 17
 - System Management Area, 27
 - Technical specifications, 58
 - Battery, 58
 - Display, 58
 - General Specifications, 58
 - Infrared capabilities, 58
 - Interfaces, 58
 - Memory, 58
 - Power Management, 58
 - Wireless Connectivity, 58
 - Time settings, 17, 43
 - Time zone settings, 17
 - Touchscreen, 7
 - calibrate, 14
 - clean, 56
 - Troubleshooting, 55
 - Upgrade firmware, 52
 - UPnP, 61
 - USB, 9
 - firmware, 9
 - Upgrading, 52
 - Watch, 13
 - broadcast program, 29
 - digital pictures, 34
 - EPG, 32
 - WEP, 16, 60
 - WEP encryption, 16
 - WEP Passkey, 16
 - WiFi, 12, 47
 - Wireless Access Point, 12, 15
 - Wireless network, 12
 - WPA, 16

Concept and Realization of this User Manual:
The Human Interface Group
De Regenboog 11, 2800 Mechelen (Belgium)
<http://www.higroup.com>