



Philips
Mini Hi-Fi System

Bluetooth®

Channel fader between 2 USBs
CD, MP3-CD, 2 USB, Tuner
1100W, NX bass



NTRX700



The ultimate sound machines

Obsessed with sound

Revel in bone shaking bass with this 1000W Philips system featuring NX bass to power up any party. Get tracks on USB drives mixed automatically with Auto DJ, 260K LED lighting effects, and effortless Bluetooth streaming from smartphones.

Convenient and easy to use

- Music transfer between 2 USB for easy music sharing

Enjoy your music from multiple sources

- Rip music from CDs, radio and karaoke onto USB device
- Stream music via Bluetooth®
- Enjoy MP3 music directly from your portable USB devices

Designed to party

- 260K LED lights for great party atmosphere
- Auto-DJ for automatic mixing of tracks on USB drive
- DJ Crossfader for mixing your tracks
- Handles and wheels for easy transportation

Engineered for powerful sound

- 5-band equalizer provides a personal music experience
- NX bass button for instant sound boost & light effects
- 1100W RMS total output power / 13000W PMPO

PHILIPS

Mini Hi-Fi System

Bluetooth® Channel fader between 2 USBs, CD, MP3-CD, 2 USB, Tuner, 1100W, NX bass

NTRX700/55

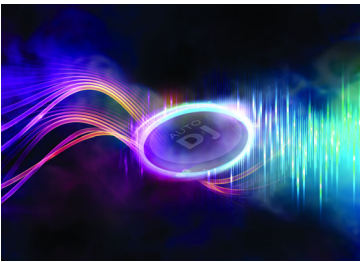
Highlights

260K LED lights



Add the ultimate atmosphere, ambiance and passion to any party, with thousands of colored lights that flicker, flash and flow in time with your music. Easily choose light colors to match your theme, or just pick one of the systems many presets. Flick the NX bass button to make the light show even more intense.

Auto-DJ for automatic mixing



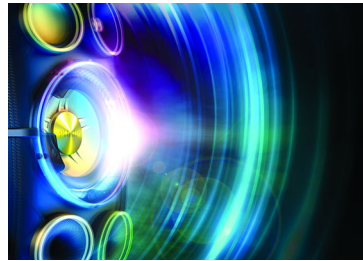
You can automate your tunes with Auto-DJ, which automatically mixes tracks on a connected USB drive. Add sound effects with the DJ jogwheel. Rock the house continuously!

DJ Crossfader for mixing



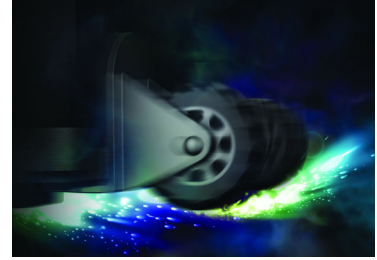
Be the master of every party! DJ cross fader lets you mix your favorite tracks between channel A and B, so you can flow seamlessly between songs. Just select the device output for deck A (USB, Bluetooth®, CD, Audio in or tuner) to start the music, then choose the input device for deck B (USB or audio in). To change tracks, swipe the fader from one side to another for a smooth transition that keeps the party pumping.

NX bass button



Available throughout the range, NX bass temporarily boosts bass and loudness to the extreme. Hit the NX bass button to instantly juice up your sound, make lighting effects go wild, and feel the immense bass of the subwoofers thundering through your bones.

Handles and wheels



Bring massive sound wherever you need it, upstairs, downstairs, indoors or out. NITRO audio solutions slip smoothly into any home thanks to their optimized footprints and clutter free, convenient controls integration. Link them up with your TV or PC to supersize your experience and make music and movies to sound bigger than ever. Or move them outside using built-in handles and wheels to turn them into the ultimate outdoor party sound system.

Stream music via Bluetooth®



If you've got a big music collection stored away on a smartphone, tablet or computer, stream it to a NITRO system using digital Bluetooth® wireless music streaming and make it sound incredible. Powerful sound is rarely this easy or this convenient.



Specifications

Sound

- Total Sound Power (RMS): 1100 W
- Sound enhancement: Dynamic Bass Boost 3 steps, digital sound control 4 modes, NX Bass
- Equalizer: 63Hz, 250Hz, 1kHz, 4kHz, 12kHz
- Output power: 13000PMPO

Loudspeakers

- Number of speaker boxes: 2
- Speaker drivers: 8" woofer, 2" tweeter
- Speaker types: bass reflex speaker system

Audio playback

- Playback media: CD, CD-R, CD-RW, MP3-CD
- Disc playback modes: repeat/one/all/program, repeat/shuffle/program
- USB Direct playback modes: fast backward/fast forward, play/pause, previous/next, repeat, shuffle, stop

Audio recording

- Recording media: USB device
- USB recording sources: CD, tuner, AUX, microphone in, USB, Bluetooth
- USB recording modes: instant record, programmed tracks, schedule radio program, single disc, single track

Tuner/Reception/Transmission

- Station presets: 40
- Tuner bands: FM, MW
- Antenna: FM antenna, MW antenna
- Tuner enhancement: auto digital tuning, auto scan, Easy set (plug & play)

Connectivity

- Microphone: Dual microphone sockets(6.3mm)
- USB: Dual USB host
- Audio in: 3.5mm stereo line in x2
- Aux in: 4 x RCA, DVD, Game, PC in, TV

Convenience

- Number of discs: 1
- Loader type: slot

- Karaoke: MIC volume
- Light Effect: Peace, Passion, Power, Samba, Fiesta, Cielo, Custom

Accessories

- Remote control: 28-key with 2xAAA batteries
- Cables/Connection: MP3 Link cable
- Others: batteries for remote control, FM/MW antenna, Quick start guide
- User Manual: B-Portuguese, Spanish
- Warranty: World Wide Guarantee booklet

Dimensions

- Gross weight (each box): 31.41 kg
- Main unit width: 390 mm
- Main unit height: 1135 mm
- Main unit depth: 396.5 mm
- Speaker box width: 390 mm
- Speaker box height: 1090 mm
- Speaker box depth: 396.5 mm
- Main unit packaging width: 566 mm
- Main unit packaging height: 1252 mm
- Main unit packaging depth: 486 mm
- Speaker box packaging width: 566 mm
- Speaker box packaging height: 1220 mm
- Speaker box packaging depth: 486 mm

Power

- Power supply: 100 - 240V AC, 50/60Hz

Auto DJ

- Metal
- Party

DJ Effect

- Beat Box
- Reverb
- Scratch
- Yeah

DJ Mix

- Source A: Audio in, Bluetooth, Disc, Tuner, USB
- Source B: Audio in, USB



Issue date 2014-12-04

Version: 4.0.2

12 NC: 8670 001 06428
EAN: 87 12581 69717 4

© 2014 Koninklijke Philips N.V.
All Rights reserved.

Specifications are subject to change without notice.
Trademarks are the property of Koninklijke Philips N.V.
or their respective owners.

www.philips.com

* Avoid extensive use of the set in a volume higher than 85 decibel
because this may damage your hearing.