

user manual

manuel d'utilisation | benutzerhandbuch | manual del usuario
gebruikershandleiding | manuale per l'utente | manual do usuário
användar-handbok

micro jukebox



Contents

Welcome

About your new product	1
Accessories	1
Register your product	1
More information	1

Connect and Charge

Battery level indication	2
--------------------------------	---

Enjoy

Powering on and off	2
Overview of controls and connections	3
Root menu	4
Navigation	4
Music mode	4
Searching for your desired music.....	5
Getting digital music onto your device.....	6
Playback	7
Playback features	8-9
Radio mode***	10
Making voice recordings	11
Playing recordings	12
Customizing settings	13
Using your player to store and carry data files	14

About Philips Device Manager and Windows Media Player

About Philips Device Manager.....	15
About Windows Media Player	15
Install Windows Media Player and Device Manager	15

Windows Media Player 9

Search and add tracks to the Library.....	16
Transfer tracks to your device.....	17-18
Add Tracks to a Playlist on your PC using WMP	19
Delete Tracks and Playlists.....	20
Edit Track Information	21
Search for Tracks.....	22

Windows Media Player 10

Search and add tracks to the Library.....	23-24
Transfer tracks to your device.....	25-26
Add Tracks to a Playlist on your PC using WMP	27
Delete Tracks and Playlists.....	28
Edit Track Information	29
Search for Tracks.....	30

Update and repair with Philips Device Manager

 Upgrade31

 Firmware Update31

 Device Repair32

Troubleshooting33

Safety and Maintenance

 General maintenance 34

 About operating and storage temperatures 34

 Take care when using headphones 34

 Copyright information 34

 Data logging 35

 Environmental information 35

 Disposal of your old product 35

 Modifications 35

Notice for the USA 36

Notice for the Canada and European Union 36

Technical data 37

Welcome

About your new product

With your newly purchased product, you can enjoy the following:

- MP3 and WMA playback (see [MUSIC MODE](#) section)
- FM radio*** (see [RADIO MODE](#) section)
- Voice recording (see [MAKING RECORDINGS](#) section)

***FM radio is available only to some regional versions. FM radio is currently not available in Europe.

Accessories



Headphones



USB cable



protective pouch



Neck-strap



multi-voltage adaptor



CD ROM with Windows Media Player
Note: HD082 has 2CDs, both need to be installed

Register your product

Since it is possible for you to upgrade your product, we recommend that you register your product on www.philips.com/register so we can inform you as soon as new free upgrades become available.

More information

Please visit www.philips.com/support or www.usasupport.philips.com (for US residents) and enter your product name to view:

- Tutorials
- FAQ, Frequently Asked Questions
- Latest user manuals
- Latest PC software downloads
- Firmware upgrade files

The type number can be found at the back of the product.
The serial number can be found at the bottom of the product.

Connect and Charge

Connect the included multi-voltage adaptor / charger into the jack marked 5V DC, and then plug the multi-voltage adaptor / charger into a standard AC outlet.

Please charge for 4 hours for 100% battery power for first time use or fast charge 70% in 1 hour:

The device is fully charged when the charging animation stops and the icon  shows.



TIP

You can also charge your device during USB connection. Please connect your device to your computer using the included USB cable.

Battery level indication

You can see the approximate power level of your batteries on the display.



Battery full



Battery two-thirds full



Battery half full




Battery low



Battery empty



TIP

When the batteries are nearly empty, the battery low screen  blinks.
Your device will save all settings and un-finished recordings before it powers down.

Enjoy

Powering on / off

Power on: Press and hold  until the splash screen lights up.

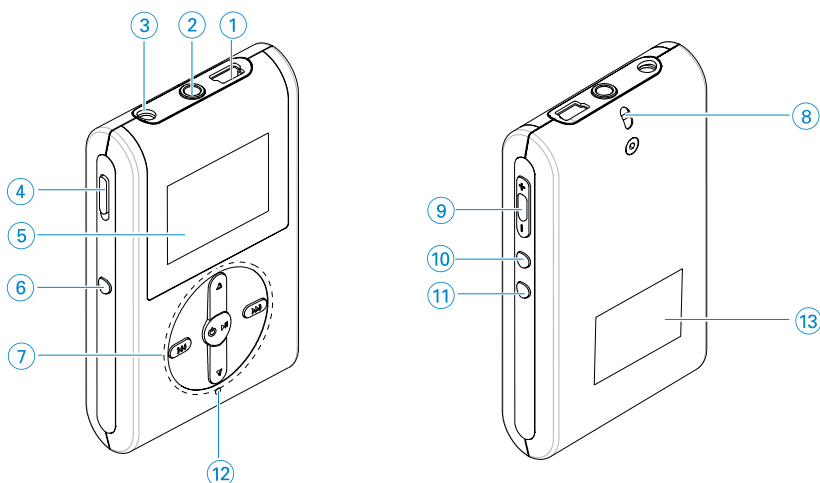
→ PHILIPS splash screen appears briefly

Power off: Press and hold  again until the device shuts down.



TIP

Your device automatically powers down if there is no operation and no music played for 10 minutes. Last playback status / screen will be resumed at next powering on.







Overview of controls and connections

- | | | |
|---|-------------------------------|--|
| ① | USB cable connector | |
| ② | 🎧 | Headphones jack |
| ③ | 5V DC | Charging socket |
| ④ | HOLD slider | To disable key press |
| ⑤ | LCD display | Dynamically displays menu, options and track information |
| ⑥ | VIEW | To switch between root menu, library and now playing screens |
| ⑦ | ▲ / ▼ | Scroll; SuperScroll; Playmode shortcut and ▲ / ▼ |
| | ⏮ / ⏭ | Rewind / Fast forward; Skip to previous / next; Up / Down to 1 level |
| | ⏻ ⏸ | Power on / off and Play / Pause; |
| ⑧ | Neckstrap eyelet | |
| ⑨ | Volume + / - | Volume control |
| ⑩ | REC | Start or Stop Voice recording |
| ⑪ | PLAYLIST | Add the current track to My Playlist |
| ⑫ | MIC | Microphone |
| ⑬ | Type number and serial number | |

Root menu

When your device powers up, you will see the ROOT MENU.

	Music	select to play your digital music tracks
	Radio***	select to listen to your radio presets
	Settings	select to customize settings for your device
	Recordings	select to play recordings

***FM radio is available only to some regional versions. FM radio is currently not available in Europe.

Navigation

Your device has an intuitive menu navigation system to guide you through various settings and operations. Use ▲, ▼, ◀, ▶ to browse through menus. Press ► to confirm your selection.

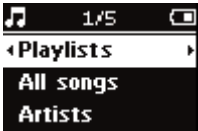
Music mode

We have put some music tracks on your device so that you can jump start your music experience. You can also transfer your digital music collection from your computer to your device through the included music management software. (see [GETTING DIGITAL MUSIC ON YOUR DEVICE](#) for more information)

Searching for your desired music

① From the root menu, select MUSIC to enter the music mode. As you enter the music mode, you can search from the following display options:

Playlists	—	Playlists collections	—	Tracks listed in chronologically saved or most played order (see ADVANCED FEATURES IN PLAYBACK for more information)				
All songs	—	Alphabetically listed tracks						
Artists	—	Alphabetically listed artists	—	Alphabetically listed albums	—	Tracks listed in album order		
Genres	—	Alphabetically listed genres	—	Alphabetically listed artists	—	Alphabetically listed albums	—	Tracks listed in album order
Albums	—	Alphabetically listed albums	—	Tracks listed in album order				



- ② Press ▲ to scroll up or ▼ to scroll down for your option.
Press ►► for next or ◀◀ for previous levels.
- ③ Press ►|| to play your selection.



TIP
You can also press and hold ▲ or ▼ key to fast scroll lists of songs (SuperScroll).
An enlarged head letter will show as the tracks scroll quickly.
Stop pressing when you have arrived at your desired head letter:

Getting digital music onto your device

Before you can play your MP3 or WMA collection on your device using Windows Media Player, you need to have both Windows Media Player and Device Manager installed as follows:

Install Philips Device Manager and Windows Media Player

- 1 Insert the supplied CD into your computer's CD-ROM drive.
- 2 Follow screen instructions to complete installation of Philips **Device Manager and Windows Media Player**.



TIP
HDD082 users: Install the Easy start CD first, followed by the "GoGear Software and user manuals" CD.

Connect your device to the computer

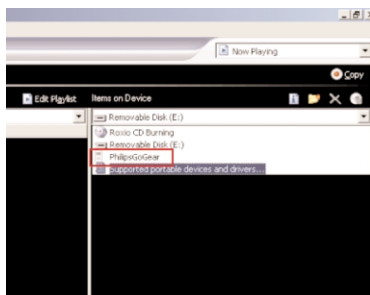
- 1 Connect your device to your computer using the supplied USB cable. A USB connection animation will be shown as soon as your device is connected.
- 2 You can organize files and transfer music to your device during USB connection.



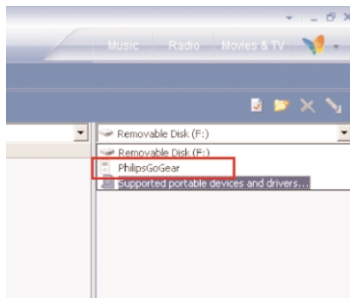
Organize and transfer music using Windows Media Player 9 / 10

- 1 Launch Windows Media Player from Windows desktop or Start menu.
- 2 To transfer files from your computer to your device, click Copy to CD or Device (WMP 9) or Sync (WMP 10) tab.
- 3 In the Items to Copy pane, in the drop-down list, click the playlist, category, or other item that you want to copy.
- 4 Clear the check boxes next to any files you do not want to copy.
- 5 In the Items on Device pane, in the drop-down list, click the device that you want to copy files to. i.e. Philips GoGear*.
- 6 Click the Copy (WMP 9) or Start Sync (WMP 10) button.

*Windows Media Player 9




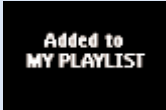
*Windows Media Player 10



TIP
You can refer to the Help > Copying files to your portable device for WMP 9 or Help > Synchronizing content to devices for WMP 10 for further details on music transfer.

Playback (also applicable to playback of recordings)

The ►||, ▲, ▼, ◀◀, ▶▶ keys are multi-functional. They work according to how you press them: *press* or *press and hold*. During music playback, you can do the following:

Operation	Controls to press	On screen indication
Pause music	Press ► during playback	
Go to next track	Press ▶▶	
Go to previous track	Press ◀◀ twice	
Forward search	Press and hold ▶▶	▶▶
Backward search	Press and hold ◀◀	◀◀
Volume control	Volume + / -	
Add to my playlist	Playlist	
Switch between Play and Library screens*	View	



TIP

You can also press Playlist on a highlighted track while you are scrolling from the MUSIC library.

* View only functions when device is playing music or radio. Entering and Exiting menu is only possible when device is playing a song/ recording/ radio.

Playback features

PLAY MODES

You can set your device to play music tracks randomly (Shuffle) and / or repeatedly (repeat).

Changing play modes

- ① From the root menu, select **Settings**.
- ② Use scroll controls to select the following options. Press ►► to confirm your selection. Press ►► to deslect a checked option.

Play mode	Shuffle	Repeat
Shuffle	On	Off
Repeat	Off	On



TIP

You can go straight to the above play modes by pressing ▲ or ▼ key during music playback.

Playback features

EQUALIZERS

You can set your device to play music tracks with different EQ (equalizers).

Changing equalizers

- ① From the root menu, select **Settings > Equalizers**.
- ② Use scroll controls to select **Rock, RnB, Electronica, HipHop, Classical, Jazz** or **Off**.



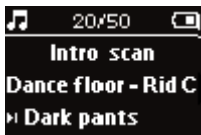
TIP

You can also adjust Equalizer settings by pressing the ▼ key during music playback.

IntrosCAN

You can preview the first 10 seconds of each track in your selection using introsCAN

- ① Press ▼ during music playback. Select **IntrosCAN**.
- ② The first 10 seconds of each track in your selection (where you entered the playscreen) will be played.
- ③ Press ▼ again to exit **IntrosCAN**.



TIP

You can play the full song by pressing ► once.

MY PLAYLIST

You can add your favourite songs, albums, artists and genres to your playlist.

- ① During music playback, press "PLAYLIST" to add music to MY PLAYLIST.
- ② Clear songs in MY PLAYLIST by selecting MUSIC > Playlists > MY PLAYLIST > Clear MY PLAYLIST.

MY MOST PLAYED

You can play back your most played songs by selecting this playlist.

- ① From the root menu, select MUSIC > Playlists > MY MOST PLAYED.
- ② Use scroll controls to select **songs in the most played order**.

Radio mode***

Select your FM region***

- ① Connect your headphones to your device. From the root menu, select **SETTINGS** to enter the settings mode.
- ② Select Radio > Radio settings. Use scroll controls to select your option. Press ►► to confirm your selection. Press ►► to deslect a checked option.

***FM radio is available only to some regional versions. FM radio is currently not available in Europe.

Region	Frequency range	Tuning steps
USA	87.5 - 108 MHz	0.1 MHz
Europe & ROW	87.5 - 108 MHz	0.05 MHz

Auto tune

- ① From the root menu, select **RADIO** to enter the radio mode.
- ② To find the radio stations with the strongest signals available in your area and store them as preset stations, use the Auto tune function.
 - 1. From the root menu select "Settings"
 - 2. Select "radio" and choose "Auto tune"



Playing a saved radio station

- ① From the root menu, select **RADIO** to enter the radio mode.
- ② Press ◀◀ to scroll up or ▶▶ to scroll down through your presets.

Manual tune

- ① In the radio screen press ▲ / ▼ to tune step by step. The screen will show a change in frequency.
- ② Press and hold the ▲ / ▼ to search for the next / previous available station
- ③ Press ►► to save the newly tuned station as a preset.



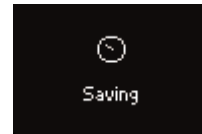
Making voice recordings

Preparing to make recordings

- ① From the root menu, select **SETTINGS** to enter the settings mode.
- ② Select **SETTINGS > Advanced** to make settings before recording. Press **▶▶** to confirm your selection.

Making voice recording

- ① Make sure you are not in the radio mode.
- ② Press and hold **REC** for 3 seconds to start voice recording.
→ Device shows the recording state.
- ③ Press **REC** again to stop voice recording.
→ Device shows the saving state. Your voice recording will be saved on your device
(filename = **recordings > mic > DDMM* MIC xxx.wav**;
xxx = track number).



*D = Date, M = Month



TIP

You can record for a maximum of 200 tracks. Any recording made beyond this level will overwrite those starting from the first track. Please remember to back up any previously stored tracks to prevent the loss of data (see next page for further details).

Playing recordings

You can find your recordings in the RECORDINGS library.

Searching for your desired recording

- ① From the root menu, select **RECORDING** to enter the recordings library. As you enter the recording library, you can search from the following options:
- ②

Recordings	_____	MIC recordings	_____	Chronologically listed recordings
Press ▲ to scroll up or ▼ to scroll down for your option.				
Press ►► for next or ◀◀ for previous levels.				
- ③ Press ►|| to play your selection.

Back up your recordings

- ① Connect to computer.
- ② Go to Windows Explorer and select your device.
- ③ You can find your recordings in the **Media / Recordings** folder.
- ④ Drag and drop your files to any desired location.

Delete your recordings

- ① From the root menu, go to Recordings > MIC recordings > Delete all.
- ② Press ►|| to delete.



TIP

Playback of recordings functions the same way as in the MUSIC library.
See [MUSIC MODE: Playback](#) for more information.

Customizing settings

- ① From the root menu, select **SETTINGS** to enter the settings mode.
- ② Use scroll controls to select your option. Press ►► to confirm your selection. Press ►► to deslect a checked option.
- ③ You can adjust the following settings.
- ④ Press and hold ◀◀ to exit the menu display.



TIP

- Options for each setting are shown on the device display.
- Available settings vary with selected mode.

Setting	Options (Default option in bold)
Shuffle	On / Off
Repeat	On / Off
Smart Save	On / Off
DBB	On / Off
Radio	
Auto tune	
Radio setting***	USA / Europe / Japan
Equalizer	Rock, RnB, Electronica, HipHop, Classical, Jazz, Off.
Backlight	5 seconds / 10 seconds / 30 seconds / Off
Contrast	Levels 1 - 6 (default value: 4)
Language	English, French, Italian, German, Spanish, Dutch, Swedish, Portuguese, Chinese (Simplified), Chinese (Traditional), Japanese, Korean
Sleep Timer	Off / 15 minutes/ 30 minutes/ 60 minutes
Factory settings	Restore Factory settings
Information	Free space
Advanced	
Smart Hide	Off / 1 / 2 / 3 / 4

***FM radio is available only to some regional versions. FM radio is currently not available in Europe.



TIP

- Smart Save is a battery power saving mode. It selects or deselects certain settings for optimal battery performance.
- Smart Hide is a function to hide some library information. With Smart Hide, you can scroll faster to the right content by hiding albums and artists which contain songs that are fewer than a specified number:
 - Smart Hide 1 will hide all artists and albums that has only 1 track in the library.
 - Smart Hide 2 will hide all artists and albums that has only 2 or fewer tracks in the library.
 - Smart Hide 3 will hide all artists and albums that has only 3 or fewer tracks in the library.
 - Smart Hide 4 will hide all artists and albums that has only 4 or fewer tracks in the library.

Using your player to store and carry data files

You can use your player to store and carry data files by copying data files to your player via Window Explorer. Windows XP users: make sure to copy the data files into the data folder of your player.

About Philips Device Manager



With Philips Device Manager, you can update and repair your device with a few simple clicks.

About Windows Media Player

With Windows Media Player you can easily manage your digital music collection and transfer music to your device.

Note:

Music that has not been transferred to your device using Windows Media Player can not be played on your device.

Install Windows Media Player and Device Manager

- ① Insert the supplied CD into your computer's CD-ROM drive.
- ② Follow screen instructions to begin and complete installation.
- ③ For Windows 2000 users, install WMP 9. For Windows XP users, install WMP 10.
- ④ Fill in necessary information when prompted to do so.



TIP

HDD082 users: Install the Easy start CD first, followed by the Philips GoGear CD.

Windows Media Player 9

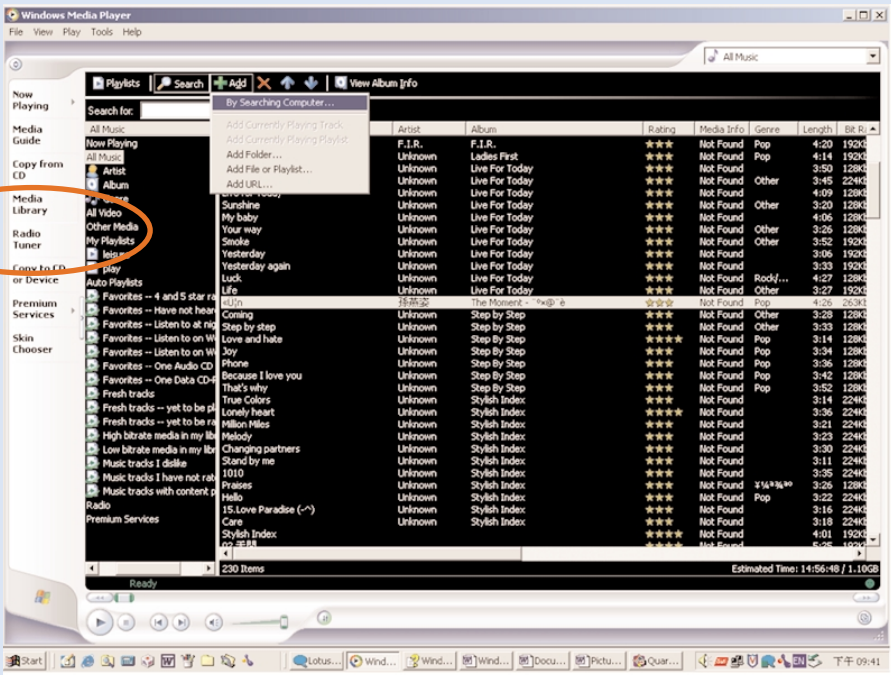
- ① Connect your device to your computer using the supplied USB cable.
The USB connection screen will automatically appear.



TIP

Please refer to your computer's manual for the exact position of your USB port.
Look for the USB symbol on the processing unit of your computer:

- ② Launch Windows Media Player:



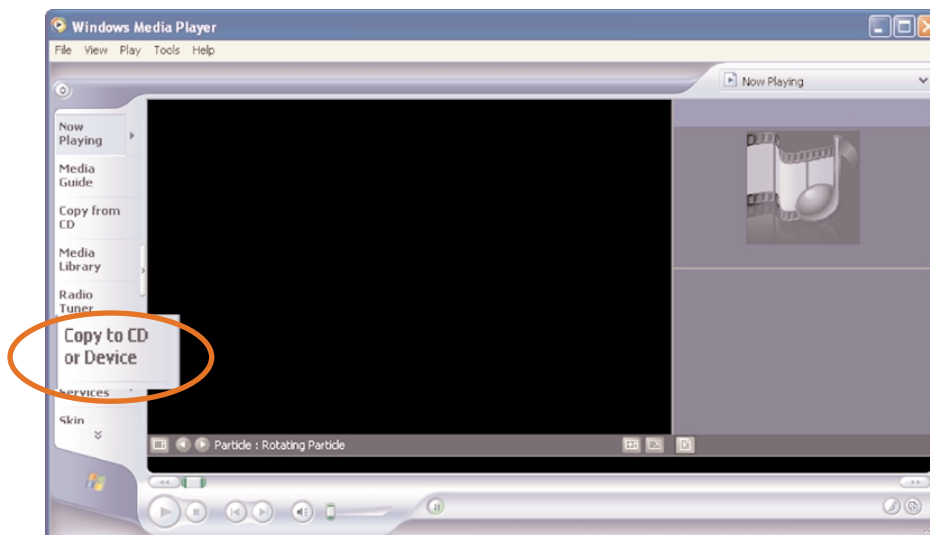
* Actual display varies with use.

Search and add tracks to the Library

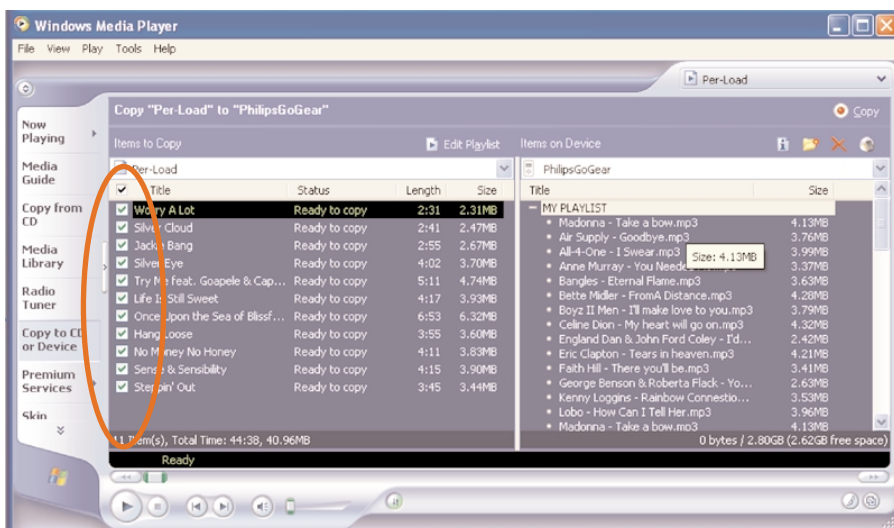
- ① Go to the Media Library tab to enter the Media Library. Click Add.
- ② From the menu, choose to add files from folder; playlist, URL or by searching your computer. You can also choose to add playing tracks or playlists.
- ③ Files will be added to the Library.

Transfer tracks to your device

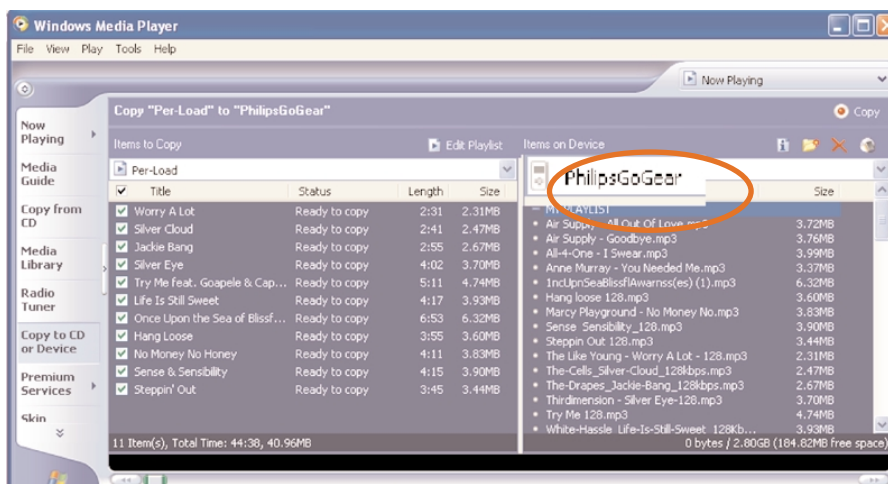
- 1 Click on Copy to CD or Device.



- 2 In the Items to Copy pane, show the playlist, category, or other items that you want to copy that you want to copy. Clear the check boxes next to any files you do not want to copy.



- ③ In the Items on Device pane, show the device that you want to copy files to, i.e. Philips GoGear /Philips. Clear the check boxes next to any files you do not want to copy.

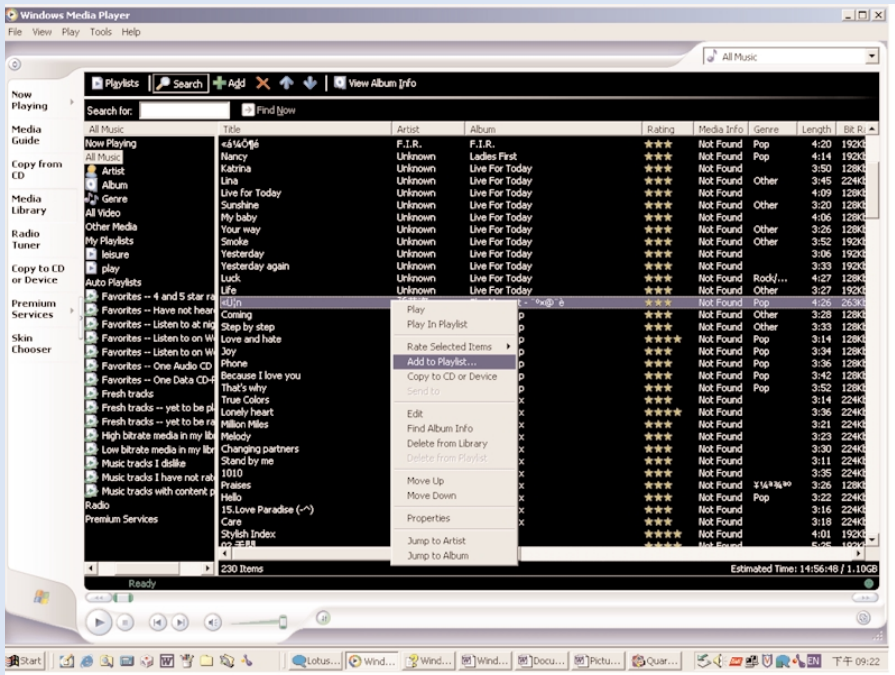


- ④ Click the Copy button.



TIP

For further details of music transfer on WMP 9, go to the help section of Windows Media Player and click **Help > Copying files to your portable device.**



*Actual display varies with use.

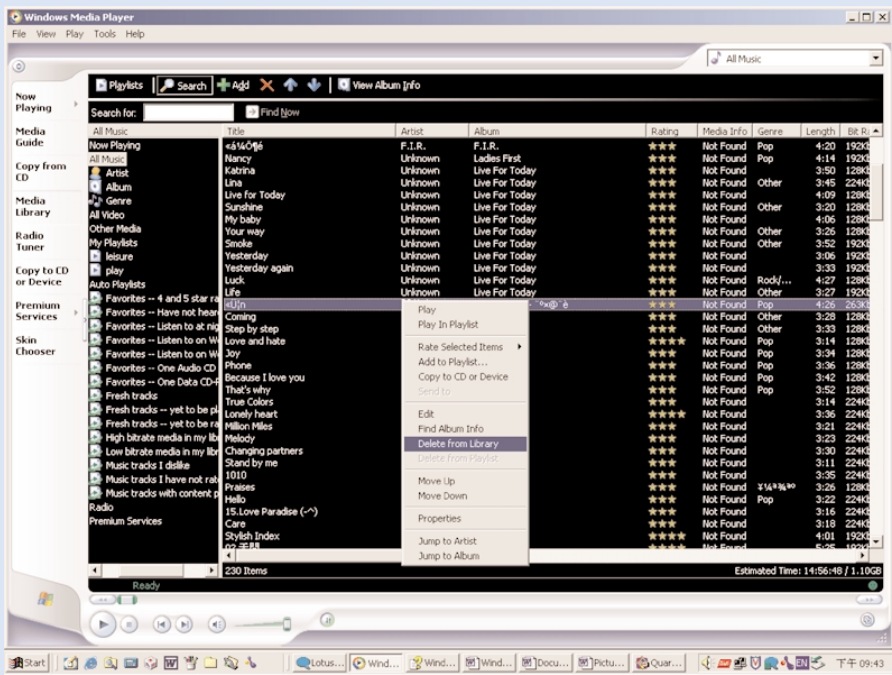
Add Tracks to a Playlist on your PC using WMP

- 1 Click to highlight an item.
- 2 Right click on the item and select Add to Playlist.
- 3 From the Add to Playlist pop-up window, select an existing playlist or add new one.
- 4 The selection is added to playlist.



TIP

Press and hold <Ctrl> on your keyboard and click to select more than one item. To select consecutive items, click the first item, press and hold <Shift> on your keyboard, and then click the last item.



*Actual display varies with use.

Delete Tracks and Playlists

- ① Click to highlight an item.
- ② Right click and select Delete from Library to delete.



TIP

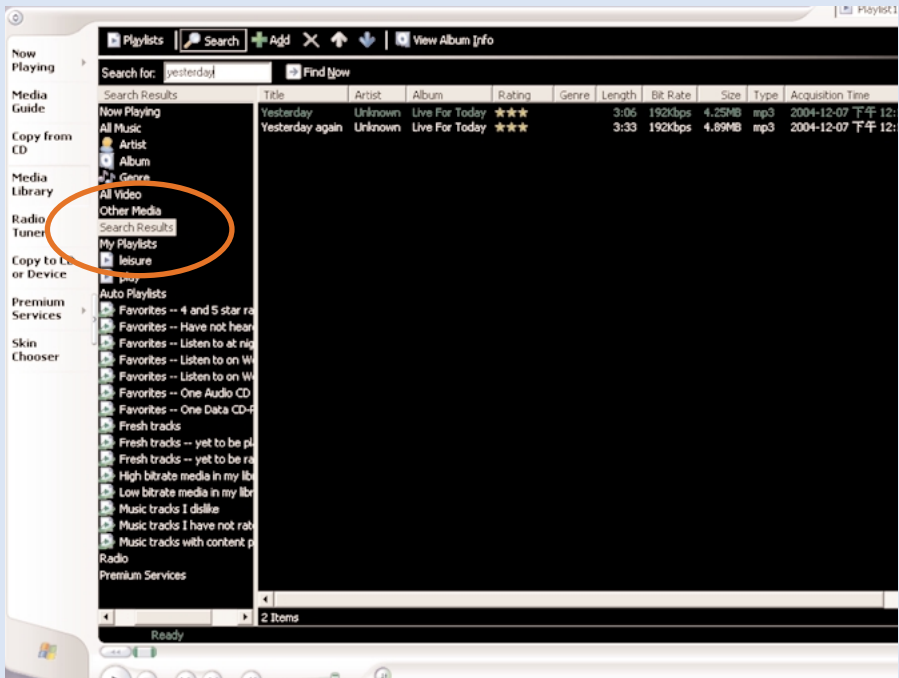
Press and hold <Ctrl> on your keyboard and click to select more than one item. To select consecutive items, click the first item, press and hold <Shift> on your keyboard, and then click the last item.



*Actual display varies with use.

Edit Track Information

- ① Click on a track.
- ② Right click and select Edit.
- ③ Click on the text boxes to edit relevant information.



*Actual display varies with use.

Search for Tracks

- ① Type a search string in the Search for field.
- ② Click on Find Now to start searching.
- ③ You will see tracks that contain the search string.
- ④ You can play, transfer, delete or add these tracks.

Windows Media Player 10

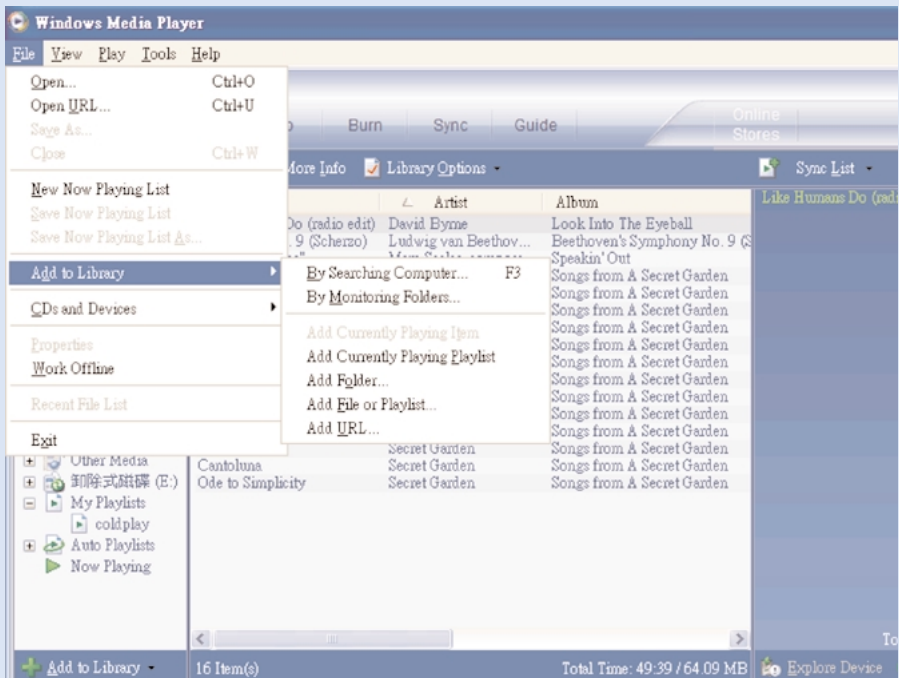
- ① Connect your device to your computer using the supplied USB cable.
The USB connection screen will automatically appear.



TIP

Please refer to your computer's manual for the exact position of your USB port.
Look for the USB symbol on the processing unit of your computer.

- ② Launch Windows Media Player.



Search and add tracks to the Library

Transfer tracks to your device



TIP

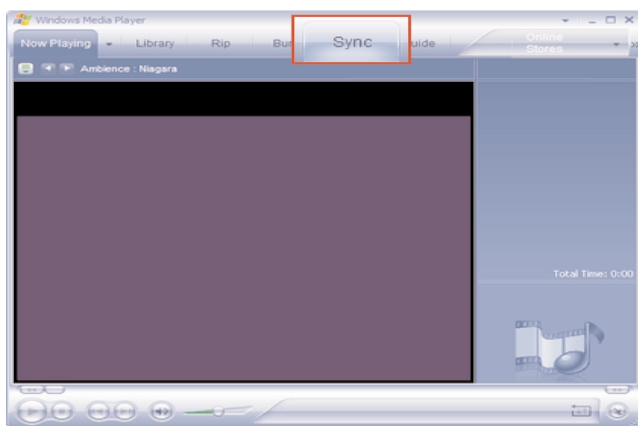
Simply connect your device to your computer, choose the synchronization method you want, and you're ready to synchronize your library to your device.

Choose a synchronization method:

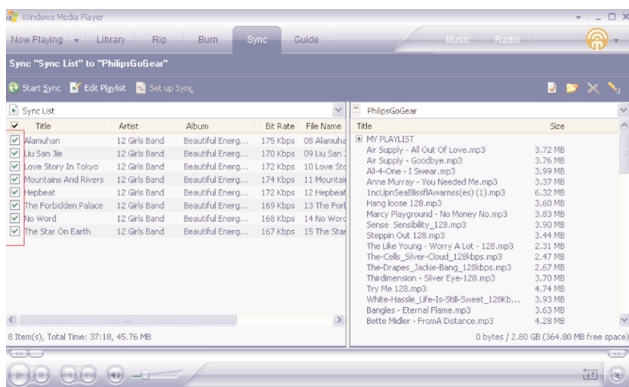
Automatic. With this option, the Player synchronizes content to the device when you connect it to your computer or when you change synchronization settings. The Player synchronizes your entire library if it can fit, or the Player synchronizes your favorite content first.

Manual. With this option, you pick specific files or playlists you want to synchronize each time you want to make changes to the content on your device.

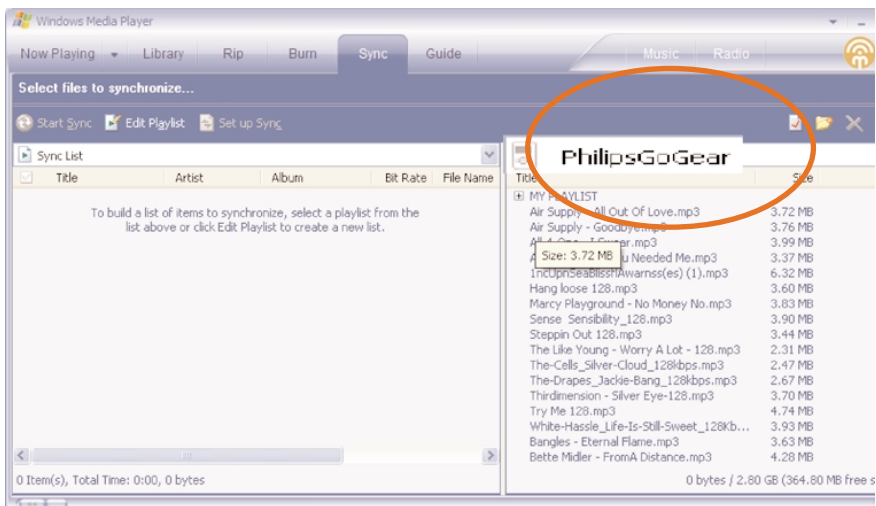
- 1 Click on Sync.



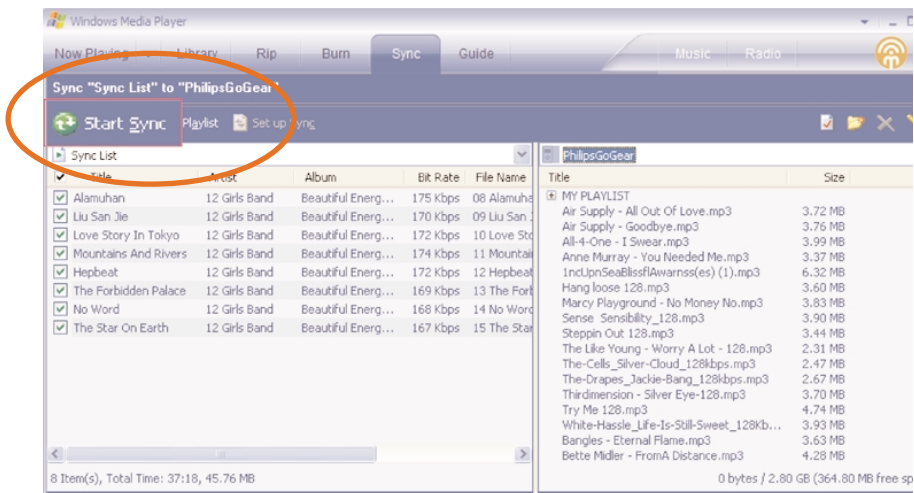
- 2 In the Items to Copy pane, show the playlist, category, or other items that you want to copy that you want to copy. Clear the check boxes next to any files you do not want to copy.



- ③ In the Items on Device pane, show the device that you want to copy files to, i.e. Philips GoGear /Philips. Clear the check boxes next to any files you do not want to copy:

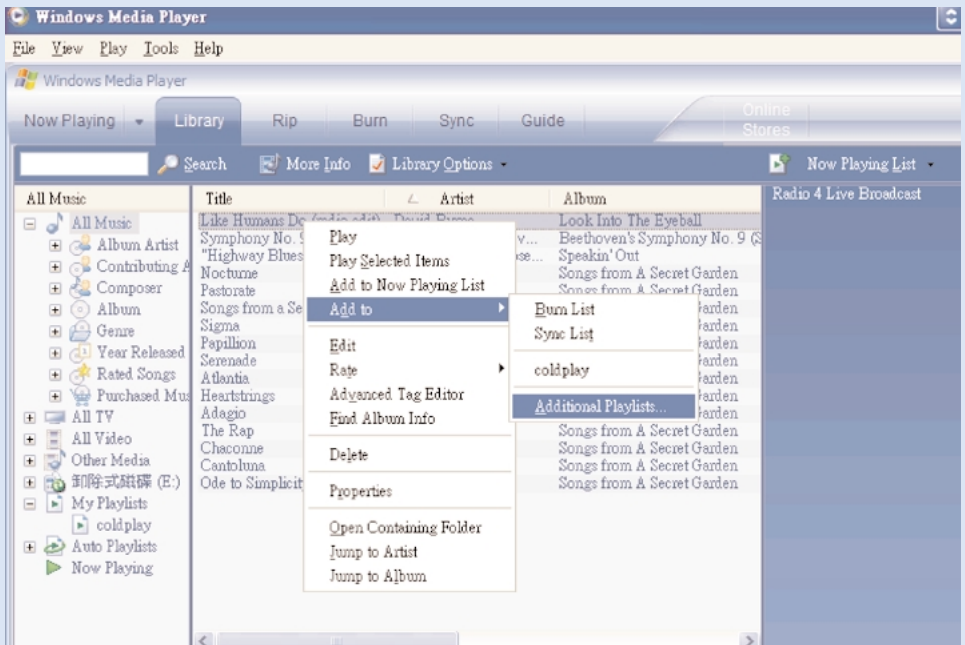


- ④ Click the Start Sync button 



TIP

For further details of music transfer on WMP 10, go to the help section of Windows Media Player and click **Help > Synchronizing content to devices**.



* Actual display varies with use.

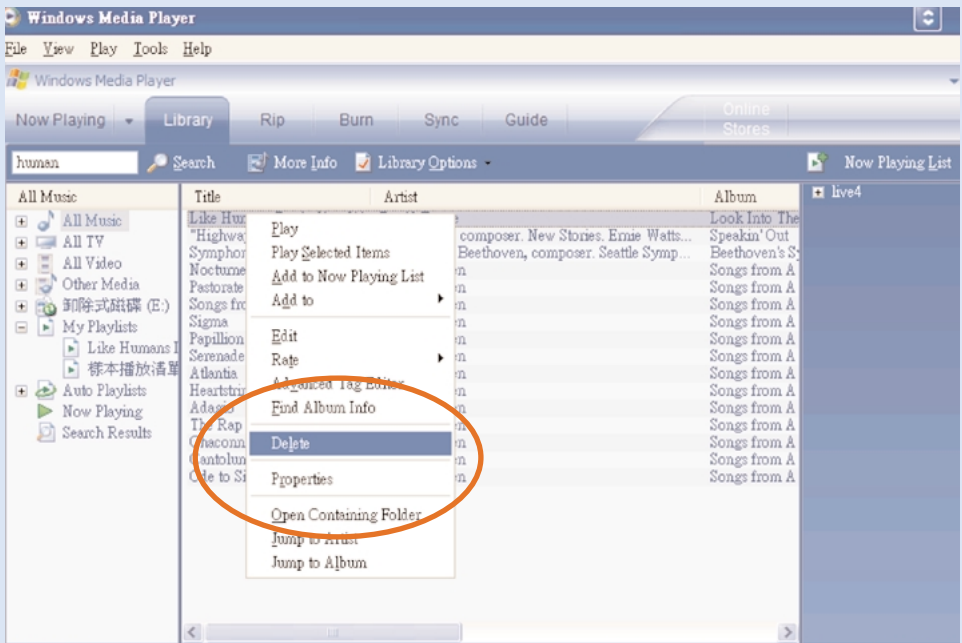
Add Tracks to a Playlist on your PC using WMP

- ① Click to highlight an item.
- ② Right click on the item and select Add to > Additional Playlist...
- ③ From the Add to Playlist pop-up window, select an existing playlist or add new one.
- ④ The selection is added to playlist.



TIP

Press and hold <Ctrl> on your keyboard and click to select more than one item. To select consecutive items, click the first item, press and hold <Shift> on your keyboard, and then click the last item.



* Actual display varies with use.

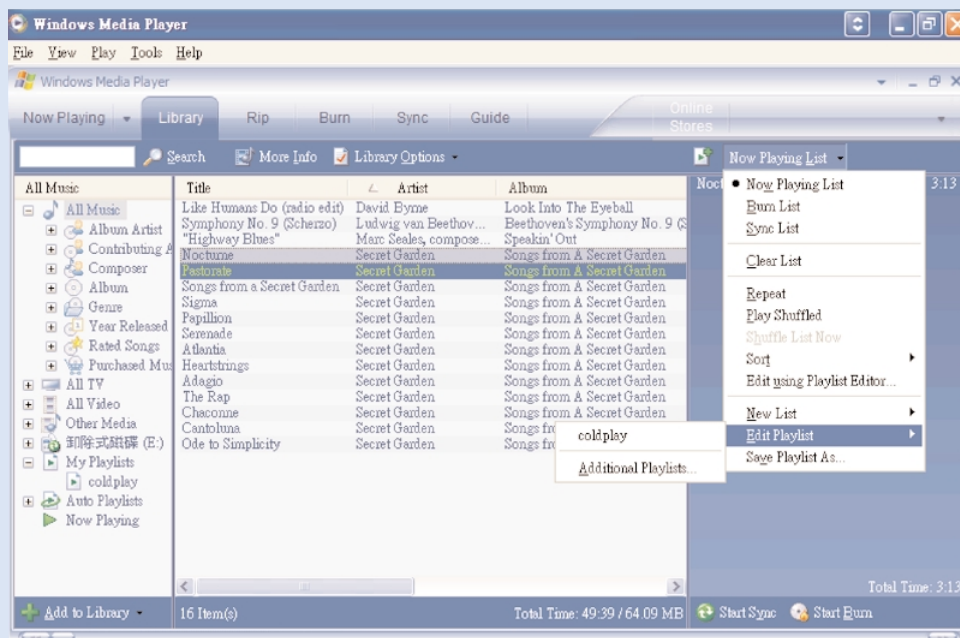
Delete Tracks and Playlists

- ① Click to highlight an item.
- ② Right click and select Delete to delete.



TIP

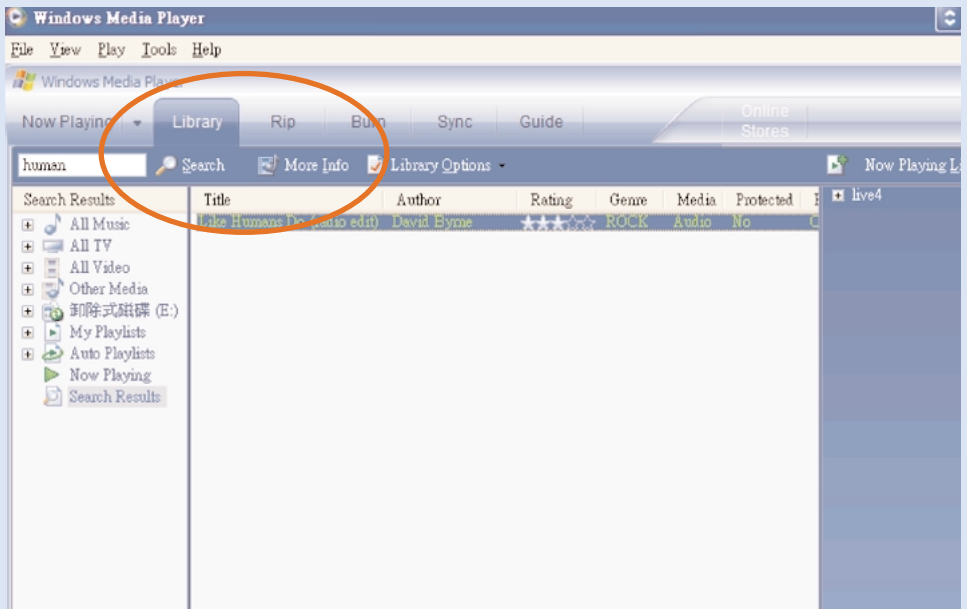
Press and hold <Ctrl> on your keyboard and click to select more than one item. To select consecutive items, click the first item, press and hold <Shift> on your keyboard, and then click the last item.



*Actual display varies with use.

Edit Track Information

- ① Click on a track.
- ② Right click and select Edit.
- ③ Click on the text boxes to edit relevant information.



* Actual display varies with use.

Search for Tracks

- 1 Type a search string in the Search field.
- 2 Click on Search to start searching.
- 3 You will see tracks that contain the search string.
- 4 You can play, transfer, delete or add these tracks.

Update and repair with Philips Device Manager

Upgrades

We know you will enjoy your product for a long time. For best performance, we recommend that you regularly check in to www.philips.com for free upgrades of the latest software and firmware for your product.

If your:

- internet connection is activated
- your Device Manager has been installed on your PC
- your device is connected and powered on

then your Device manager will pop-up a message if new firmware is available for your device


Firmware Update

Your device is controlled by an internal program called firmware. You can install the latest firmware from the bypacked CD and download it from www.philips.com/support to keep your device updated.



TIP

Please charge your device fully before firmware update. This will ensure steady power supply for completing the whole process.

- 1 Install Philips Device manager from the "GoGear digital audio player software and user manuel" CD.
- 2 Connect your device to your computer.
- 3 Launch **Device Manager** User Interface by right-clicking on this  icon in the taskbar and selecting "Launch Device Manager" or from the Desktop icons or by going to **Start → Programs → Philips Device Manager →** or from the desktop.
- 4 Select your device and click Update, Device Manager will check whether a new firmware is available and install it on your device.
- 5 If a new firmware file is available for your device, you will be prompted to download the same. You can choose "**Yes**" to download the latest firmware or choose "**Cancel**" to use the existing firmware file on your PC.
- 6 If you have chosen to download the latest firmware, after the download, the Device Manager will prompt you for permission to load the firmware onto the device. On selecting "**Yes**" the latest firmware will be loaded into the device.
- 7 In case you have chosen "**Cancel**", the firmware present on the PC will be loaded onto the device.
- 8 The process is complete when the device restarts and displays the power up splash screen.


Device Repair

Your device is controlled by an internal program called firmware. In case your device has a problem, or you wish to format the device, you may need to repair it.



TIP

Please charge your device fully before device repair. This will ensure steady power supply for completing the whole process.

- ① Connect your device to your computer (powered by the supplied AC/DC adapter).
- ② Launch Device Manager User Interface by right-clicking on this  icon in the taskbar and selecting "Launch Device Manager" or by going to **Start → Programs → Philips Device Manager**
- ③ In the main window, go to the repair tab and click Repair.
- ④ You will be prompted before repair begins.

ATTENTION!

All media contents will be erased!

- ⑤ Click OK to continue. Click Cancel to stop.
- ⑥ The Device Manager will repair your device. Once the repair is complete, the device can be disconnected from the PC and is ready to be used again.

Troubleshooting

If a fault occurs, first check the points listed in the following pages. For further help and other troubleshooting tips, please also check out FAQs at www.philips.com/support.
If you are unable to find a solution by following these hints, consult your dealer or service center.

WARNING:

Under no circumstances should you try to repair the set yourself, as this will invalidate the warranty.

Symptom	Solution
Hang up	Press and hold [VOLUME +] and ► simultaneously. Your device will reset.
Cannot power up	Charge your device. In case of device error, connect your device to the computer. Use Device Manager to restore your device.
Player skips track	The skipped track is protected. You may not have enough rights to play the skipped track on your device. Check music rights with song provider.
Short playback time	Over time, the internal rechargeable battery will become weaker. It is replaceable. Please contact your nearest Philips Service Center for a battery replacement.

Safety and Maintenance

General maintenance

To avoid damage or malfunction:

- Do not expose to excessive heat caused by heating equipment or direct sunlight.
- Do not drop your player or allow objects to fall on your player.
- Do not allow your player to be submersed in water. Do not expose earphone socket or battery compartment to water as water entering the set may cause major damage.
- Do not use any cleaning agents containing alcohol, ammonia, benzene, or abrasives as these may harm the set.
- Active mobile phones in the vicinity may cause interference.
- **Backup your files.** Please ensure that you retain the original files that you have downloaded to your device. Philips is not responsible for any loss of content if the product becomes damaged or not readable / legible.
- Manage (transfer, delete, etc.) your files only through included music software to avoid problems!

About operating and storage temperatures

- Operate in a place where the temperature is always between 0 and 35° C (32 to 95° F).
- Store in a place where the temperature is always between -20 and 45° C (-4 to 113° F).
- Battery life may shorten in low temperature conditions..

Take care when using headphones

Hearing safety

Listen at a moderate volume. Using headphones at high volume can impair your hearing. We recommend headphone no. SHE775 for this product.

Important (for models with bypacked headphones):

Philips guarantees compliance with the maximum sound power of its audio players as determined by relevant regulatory bodies only with the original model of provided headphones. In case this one needs replacement, we recommend that you contact your retailer to order a model identical to that of the original provided by Philips.

Traffic safety

Do not use headphones while driving or cycling as you may cause an accident.

Copyright information

- All other brand and product names are trademarks of their respective companies or organizations.
- Unauthorized duplication of any recordings downloaded from the internet or made from audio CDs is a violation of copyright laws and international treaties.
- The making of unauthorized copies of copy-protected material, including computer programmes, files, broadcasts and sound recordings, may be an infringement of copyrights and constitute a criminal offence. This equipment should not be used for such purposes.

Important

This product is protected by certain intellectual property rights of Microsoft Corporation. Use or distribution of such technology outside this product is prohibited without a license from Microsoft or an authorized Microsoft subsidiary.

Content providers are using the digital rights management technology for Windows Media contained in this device ("WM-DRM") to protect the integrity of their content ("Secure Content") so that their intellectual property, including copyright, in such content is not misappropriated. This device uses WM-DRM software to play Secure Content ("WM-DRM Software"). If the security of the WM-DRM Software in this device has been compromised, owners of Secure Content ("Secure Content Owners") may request that Microsoft revoke the WM-DRM Software's right to acquire new licenses to copy, display and/or play Secure Content. Revocation does not alter the WM-DRM Software's ability to play unprotected content. A list of revoked WM-DRM Software is sent to your device whenever you download a license for Secure Content from the Internet or from a PC. Microsoft may, in conjunction with such licenses, also download revocations lists onto your device on behalf of Secure Content Owners.

Data logging

Philips is committed to improving the quality of your product and enhancing the Philips user experience. To understand the usage profile of this device, this device logs some info/data to the non volatile memory region of the device. These data are used to identify and detect any failures or problems you as a user may experience while using the device. The data stored, for example, will be the duration of playback in music mode, duration of playback in tuner mode, how many times battery low was encountered, etc. The data stored do not reveal the content or media used on the device or the source of downloads. The data stored on the device are retrieved and used ONLY if the user returns the device to the Philips service centre and ONLY to simplify error detection and prevention. The data stored shall be made available to user on users' first request.

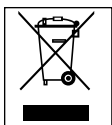
Environmental information

We have reduced the packaging to its minimum and made it easy to separate into materials: cardboard, PS, PE, PET.

Your set consists of material which can be recycled if disassembled by a specialized company. Please observe the local regulations to dispose of packaging, exhausted batteries and old equipment.

Disposal of your old product

Your product is designed and manufactured with high quality materials and components, which can be recycled and reused.



When this crossed-out wheeled bin symbol is attached to a product it means the product is covered by the European Directive 2002/96/EC

Please inform yourself about the local separate collection system for electrical and electronic products.

Please act according to your local rules and do not dispose of your old products with your normal household waste. The correct disposal of your old product will help prevent potential negative consequences for the environment and human health.

Modifications

Modifications not authorized by the manufacturer may void user authority to operate this device.

Notice for the USA



**Philips
HDD082
HDD084
HDD085**

Note:

This equipment has been tested and found to comply with the limits for a Class B digital device, pursuant to part 15 of the FCC Rules. These limits are designed to provide reasonable protection against harmful interference in a residential installation. This equipment generates, uses, and can radiate radio frequency energy and, if not installed and used in accordance with the instruction manual, may cause harmful interference to radio communications.

However, there is no guarantee that interference will not occur in a particular installation.

If this equipment does cause harmful interference to radio or television reception, which can be determined by turning the equipment off and on, the user is encouraged to try to correct the interference by one or more of the following measures:

- Relocate the receiving antenna.
- Increase the separation between the equipment and receiver.
- Connect the equipment into an outlet on a circuit different from that to which the receiver is connected.
- Consult the dealer or an experienced radio/TV technician for help.

Notice for Canada

This Class B digital apparatus complies with Canadian ICES-003.

The set complies with the FCC-Rules, Part 15 and with 21 CFR 1040.10.

Operation is subject to the following two conditions:

1. This device may not cause harmful interference, and
2. This device must accept any interference received, including interference that may cause undesired operation.

Notice for the European Union

This product complies with the radio interference requirements of the European Union.

Technical Data

Power supply	610 mAh Li-ion internal rechargeable battery Multi-voltage charger / adaptor: 4 hours full charge; 1 hour fast charge	
Dimensions	53 × 86 × 16.7 mm (2.1 × 3.4 × 0.7 inches)	
Weight	78 g (3.3 oz)	
Picture / Display	White backlight LCD, 96 × 64 pixels	
Sound	Channel separation	50 dB
	Equalizer settings	Rock,RnB, Electronica, HipHop, Classical, Jazz
	Frequency response	30-18 000 Hz
	Signal to noise ratio	>80 dB
	Output Power (RMS)	2 × 4 mW
Audio Playback		
Play time	10 hours	
Compression format	MP3 (8-320 kbps and VBR; Sample rate: 8, 11.025, 16, 22.050, 24, 32, 44.1, 48 kHz) WAV WMA (32-192 kbps)	
DRM	PDRM	
ID3-tag support	Album title and artist name	
Audio Capturing	Built-in microphone	Mono
Storage Media		
Built-in memory capacity	HDD082 2GB* micro hdd	
	HDD084 3GB* micro hdd	
	HDD085 4GB* micro hdd	
Tuner / Reception / Transmission Auto store / Tuner band: FM***		
***FM radio is available only to some regional versions. FM radio is currently not available in Europe.		
Connectivity	Headphone 3.5 mm, USB 2.0 (type B mini), 5V DC	
Music transfer	via Windows Media Player 9 or 10	
Data transfer	via Windows Explorer	
System Requirements	Windows®2000 (SP4) or XP(SP1 or above)	
	Pentium II or better	
	64 MB RAM	
	100 MB hard drive space	
	Internet connection	
	Microsoft Internet Explorer 5.5 or later	
	Video display card	
	Soundcard	
	USB port	

PHILIPS reserves the right to make design and specification changes for product improvement without prior notice.

*Note that some operating systems display capacity in units of "GB" where $1.0 \text{ GB} = 2^{30} = 1,073,741,834$ bytes. The resulting "GB" capacity displayed by the OS will be smaller because of using this base-2 definition for "Gigabyte".



Be responsible
Respect copyrights

Specifications are subject to change without notice.
Trademarks are the property of Koninklijke Philips Electronics N.V.
or their respective owners
2005 © Koninklijke Philips Electronics N.V. All rights reserved.
www.philips.com

