

PET708 User manual

Part1 PET708 main unit page 2-3

Part2 PAC130 2nd display page 4

Portable DVD player



PHILIPS

PHILIPS CONSUMER ELECTRONICS COMPANY
Marietta, GA 30006-0026
Meet Philips at the Internet
http://www.philips.com/us/support
1-888-philips (744-5477)
or call
1-888-philips (744-5477)
or visit us on the web at www.usa.philips.com

Printed in China

Canada

English
This digital apparatus does not exceed the Class B limits for radio noise emissions from digital apparatus as set out in the Radio Interference Regulations of the Canadian Department of Communications.
Français
Cet appareil numérique n'émet pas de bruits radioélectriques dépassant les limites applicables aux appareils numériques de Classe B prescrites dans le Règlement sur le Brouillage Radioélectrique édicté par le Ministère des Communications du Canada.

The set complies with the FCC-Rules, Part 15 and with CFR 104.10. Operation is subject to the following two conditions:

- 1. This device must not cause harmful interference, and
2. This device must accept any interference received, including interference that may cause undesired operation.
L'appareil répond aux normes FCC, Part 15 et 21 CFR 104.10. Fonctionnement soumis aux deux conditions suivantes:
1. Cet appareil ne doit pas provoquer d'interférences nuisibles, et
2. Cet appareil doit accepter toute interférence reçue, y compris les interférences susceptibles de provoquer un fonctionnement peu satisfaisant.

El aparato cumple las normas FCC, Parte 15 y 21 CFR 104.10. Funcionamiento dependiente de dos condiciones siguientes:

- 1. Este aparato no puede provocar interferencia dañina, y
2. Este aparato debe aceptar cualquier interferencia recibida, incluido las interferencias que pueden provocar un funcionamiento insuficiente.

COPYRIGHT INFORMATION

The making of unauthorized copies of any copyrighted material, including computer programmes, film, broadcasts and sound recordings, may be an infringement of copyright and constitute a criminal offence. This equipment should not be used for such purposes.
Windows Media and the Windows logo are trademarks, or registered trademarks of Microsoft Corporation in the United States and/or other countries.

DISPOSAL OF YOUR OLD PRODUCT

Your product is designed and manufactured with high quality materials and components, which can be recycled and reused.
When this crossed-out wheeled bin symbol is attached to a product it means the product is covered by the European Directive 2002/96/EC.

PHILIPS

PHILIPS reserves the right to make design and specification changes for product improvement without prior notice.
Modifications not authorized by the manufacturer may void users authority to operate this device.
All rights reserved.

IMPORTANT SAFETY INSTRUCTIONS

- 1. Read these instructions.
2. Keep these instructions.
3. Heed all warnings.
4. Follow all instructions.
5. Do not use this apparatus near water.
6. Clean only with dry cloth.
7. Do not block any ventilation openings.
8. Do not install near any heat sources such as radiators, heat registers, stoves, or other apparatus.
9. Do not defeat the safety purpose of the polarized or grounding-type plug.
10. Protect the power cord from being walked on or pinched.
11. Only use attachments/accessories specified by the manufacturer.
12. Use only with the cart, stand, tripod, bracket, or table specified by the manufacturer or sold with the apparatus.
13. Unplug this apparatus during lightning storms or when unused for long periods of time.
14. Refer all servicing to qualified service personnel.
15. Battery usage CAUTION
16. Apparatus shall not be exposed to dripping or splashing.
17. Do not place any sources of danger on the apparatus.
18. This product may contain lead and mercury.

CONSIGNES DE SÉCURITÉ IMPORTANTES

- 1. Lisez ces instructions.
2. Conservez ces instructions.
3. Respectez les avertissements.
4. Suivez toutes les instructions.
5. N'utilisez pas cet appareil à proximité d'une source d'eau.
6. Nettoyez l'appareil uniquement avec un chiffon sec.
7. N'obstruez aucun orifice de ventilation.
8. N'installez pas l'appareil près d'une source de chaleur.
9. Ne détruisez pas la prise polarisée C.A.
10. Protégez le cordon d'alimentation.
11. Utilisez uniquement des accessoires ou options recommandés par le fabricant.
12. Utilisez uniquement un meuble sur roulettes.
13. Débranchez l'appareil pendant les orages.
14. Pour toute réparation, faites appel à un personnel qualifié.
15. Précaution d'emploi des piles.
16. Cet appareil ne doit pas être exposé à des éclaboussures.
17. N'exposez pas cet appareil à sources de chaleur.
18. Ce produit peut contenir du plomb et du mercure.

English FUNCTIONAL OVERVIEW

- 1. OPEN
2. POWER
3. PH
4. VOL
5. SETUP
6. MENU
7. OK
8. POWER/CH/IR

GENERAL INFORMATION

Power Sources
This unit operates on a supplied AC adapter, car adapter, or a rechargeable battery pack.
Safety and maintenance
Do not disassemble the unit as laser rays are dangerous to eyes.
Hearing safety
Listen at a moderate volume.

FUNCTIONAL OVERVIEW

- 1. PHONE
2. AV IN
3. AV OUT
4. COAXIAL
5. DC IN 12V
6. REPEAT
7. VOL
8. PH
9. VOL
10. SETUP
11. MENU
12. OK

GENERAL INFORMATION

Hearing safety
Listen at a moderate volume.
Environmental information
We have reduced the packaging to its minimum and made it easy to separate into more materials: cardboard, PS, PET and PE.

REMOTE CONTROL

- 1. Power
2. Play/Pause
3. Stop
4. Previous/Next
5. Stop
6. Stop
7. Stop
8. Stop
9. Stop
10. Stop
11. Stop
12. Stop

GENERAL INFORMATION

Handling discs
Do not attach paper or tape to the disc.
On handling the LCD screen
The LCD is manufactured using high precision technology.
Environmental information
We have reduced the packaging to its minimum and made it easy to separate into more materials: cardboard, PS, PET and PE.

INTRODUCTION

Your portable DVD player
Playable disc formats
Video CD
Audio CD/MP3
CD with JPEG files

PREPARATIONS

- 1. Switch off the set.
2. Connect the supplied adapter to the set and the main power supply.
3. Turn the player upside down.
4. Press down the battery pack lock switch.

INTRODUCTION

Playable disc formats
Video CD
Audio CD/MP3
CD with JPEG files

PREPARATIONS

- 1. Switch off the set.
2. Connect the supplied adapter to the set and the main power supply.
3. Turn the player upside down.
4. Press down the battery pack lock switch.

INSTRUCCIONES IMPORTANTES DE SEGURIDAD

- 1. Lea estas instrucciones.
2. Conserve estas instrucciones.
3. Lea todos los avisos.
4. Siga todas las instrucciones.
5. No utilice este aparato cerca del agua.
6. Para limpiar el aparato utilice sólo un trapo seco.
7. No tape las aperturas de ventilación.
8. No instale el equipo cerca de fuentes de calor.
9. No anule la seguridad de la clavija de corriente.
10. Proteja debidamente el cable impidiendo que pueda pisarse o incluso perforarse.
11. Utilice exclusivamente aquellos dispositivos/ accesorios recomendados por el fabricante.

CONSIGNES DE SÉCURITÉ IMPORTANTES

- 1. Lisez ces instructions.
2. Conservez ces instructions.
3. Respectez les avertissements.
4. Suivez toutes les instructions.
5. Ne utilisez pas cet appareil à proximité d'une source d'eau.
6. Nettoyez l'appareil uniquement avec un chiffon sec.
7. N'obstruez aucun orifice de ventilation.
8. N'installez pas l'appareil près d'une source de chaleur.
9. Ne détruisez pas la prise polarisée C.A.
10. Protégez le cordon d'alimentation.
11. Utilisez uniquement des accessoires ou options recommandés par le fabricant.

PREPARATIONS

- 1. Switch off the set.
2. Connect the supplied adapter to the set and the main power supply.
3. Turn the player upside down.
4. Press down the battery pack lock switch.

PREPARATIONS

- 1. Switch off the set.
2. Connect the supplied adapter to the set and the main power supply.
3. Turn the player upside down.
4. Press down the battery pack lock switch.

BASIC FUNCTIONS

- 1. Press the POWER switch to ON to switch on the player.
2. Press SETUP for the set up menu.
3. Select GENERAL SETUP and press OK.
4. Scroll and select OSD LANG and press ► to select from OSD language options.
5. Select your preferred language and press OK.

BASIC FUNCTIONS

- 1. Press the POWER switch to ON to switch on the player.
2. Press SETUP for the set up menu.
3. Select GENERAL SETUP and press OK.
4. Scroll and select OSD LANG and press ► to select from OSD language options.
5. Select your preferred language and press OK.

NOTES

PHILIPS
PHILIPS reserves the right to make design and specification changes for product improvement without prior notice.
Modifications not authorized by the manufacturer may void users authority to operate this device.
All rights reserved.

NOTES

PHILIPS
PHILIPS reserves the right to make design and specification changes for product improvement without prior notice.
Modifications not authorized by the manufacturer may void users authority to operate this device.
All rights reserved.

SETUP OPERATIONS

- 1. Press SETUP. A list of features is shown.
2. Use the ▲/▼ keys to highlight your selection, and press OK.
3. Press ► to accept current settings or go back to previous menu level.
4. Press ► to accept current settings or go back to previous menu level.

SETUP OPERATIONS

- 1. Press SETUP. A list of features is shown.
2. Use the ▲/▼ keys to highlight your selection, and press OK.
3. Press ► to accept current settings or go back to previous menu level.
4. Press ► to accept current settings or go back to previous menu level.

TROUBLESHOOTING

- Symptom
Disc can't be played
The player does not respond to the remote control
No power
Distorted or B/W picture with DVD
No audio at digital output
Player does not respond to all operation commands during playback
Player feels warm
Display goes dimmer when AC is unplugged
No sound

TROUBLESHOOTING

- Symptom
Disc can't be played
The player does not respond to the remote control
No power
Distorted or B/W picture with DVD
No audio at digital output
Player does not respond to all operation commands during playback
Player feels warm
Display goes dimmer when AC is unplugged
No sound

TECHNICAL DATA

Table with 2 columns: Dimensions, Weight, Power supply, Operating temperature range, Laser wavelength, Video system, Frequency response, Signal/noise ratio, Audio distortion, Channel separation, Dynamic range, Output, Audio out (analog audio), Lead impedance, Video out Output level, Load impedance.

Portable DVD player

PET830

User manual
 Manuel d'utilisation
 Manual del usuario
 Manual do usuário

PHILIPS



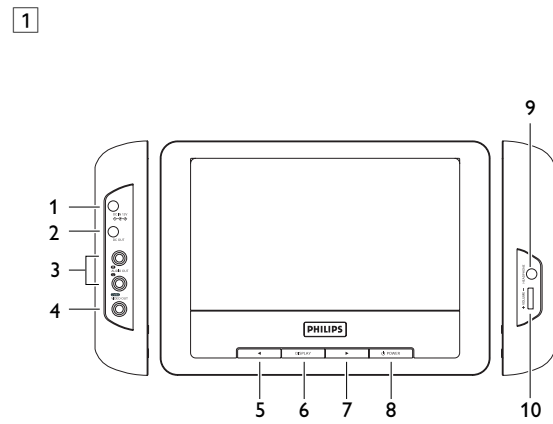
**Be responsible
 Respect copyrights**

Specifications are subject to change without notice.
 Trademarks are the property of Koninklijke Philips Electronics N.V.
 or their respective owners
 2006 © Koninklijke Philips Electronics N.V. All rights reserved.



Printed in China

wk6461



English

Content

1 Control elements and functional components	3.3	Connect to headphone
1.1 Left side of the player	3.4	Connect to camcorder
1.2 Front side of the player	4 Enjoyment	
1.3 Right side of the player	4.1	Screen brightness and contrast
2 General information	4.2	Volume control
3 Connection	4.3	Screen brightness and contrast
3.1 Use in car environment	5 Troubleshooting	
3.2 Use at home	6 Technical data	

1 Control elements and functional components

1.1 Left side of the player (see figure 1)

- 1 DC IN** Adapter connection for power supply
- 2 DC OUT**
- 3 AUDIO IN** Audio input
- 4 VIDEO IN** Video input

1.2 Front side of the player (see figure 1)

- 5,7** ◀ ▶ Left/right cursor
- 6 DISPLAY** Adjust the display value of the system
- 8** ⏻ **POWER** Switch the player on / off

1.3 Right side of the player (see figure 1)

- 9** Headphone jack
- 10 + VOLUME** - Volume control

2 General information

Power Sources

This unit operates on a supplied AC adaptor or car adapter.

- Make sure that the input voltage of the AC adaptor is in line with the local voltage. Otherwise, the AC adaptor and unit may be damaged.
- Do not touch the AC adaptor with wet hands to prevent electric shock.
- When connecting with car power (cigarette lighter) adaptor, be sure the input voltage of the adaptor is identical with car voltage.
- Unplug the AC adaptor from the outlet or remove the battery pack when the unit is not used for long periods of time.
- Hold the plug to disconnect the AC adaptor. Do not pull the power cord.

Please always use supplied AC/DC adaptor (AY4129)

Safety and maintenance

- Do not disassemble the unit for laser rays are dangerous to eyes.
Any service should be done by qualified service personnel.
- Unplug the AC adaptor to cut the power if liquid or objects get inside the unit.
- Take care not to drop the unit or subject it to strong shocks, which may cause malfunction.

Hearing Safety

Listen at a moderate volume.

- Using headphones at a high volume can impair your hearing. This product can produce sounds in decibel ranges that may cause hearing loss for a normal person, even for exposure less than a minute. The higher decibel ranges are offered for those that may have already experienced some hearing loss.
- Sound can be deceiving. Over time your hearing "comfort level" adapts to higher volumes of sound. So after prolonged listening, what sounds "normal" can actually be loud and harmful to your hearing. To guard against this, set your volume to a safe level before your hearing adapts and leave it there.

To establish a safe volume level:

- Set your volume control at a low setting.
- Slowly increase the sound until you can hear it comfortably and clearly, without distortion.

Listen for reasonable periods of time:

- Prolonged exposure to sound, even at normally "safe" levels, can also cause hearing loss.
- Be sure to use your equipment reasonably and take appropriate breaks.

Be sure to observe the following guidelines when using your headphones.

- Listen at reasonable volumes for reasonable periods of time.
- Be careful not to adjust the volume as your hearing adapts.
- Do not turn up the volume so high that you can't hear what's around you.
- You should use caution or temporarily discontinue use in potentially hazardous situations.
- Do not use headphones while operating a motorized vehicle, cycling, skateboarding, etc.; it may create a traffic hazard and is illegal in many areas.
- Important (for models with by-packed headphones): Philips guarantees compliance with the maximum sound power of its audio players as determined by relevant regulatory bodies only with the original model of provided headphones. In case this one needs replacement, we recommend that you contact your retailer to order a model identical to that of the original provided by Philips.
- Traffic safety: do not use while driving or cycling as you may cause an accident.
- Do not expose to excessive heat caused by heating equipment or direct sunlight.
- This product is not waterproof. do not allow your player to be submersed in water. Water entering the player may cause major damage.
- Do not use any cleaning agents containing alcohol, ammonia, benzene, or abrasives as these may harm the player.
- Apparatus shall not be exposed to dripping or splashing. Do not place any sources of danger on the apparatus (e.g. liquid filled objects, lighted candles)
- Do not touch the lens!

When the player is in use for a long period of time, the surface will be heated. This is normal.

On handling the LCD screen

The LCD is manufactured using high precision technology. You may, however, see tiny black points and/or bright points (red, blue, green) that continuously appear on the LCD. This is a normal result of the manufacturing process and does not indicate a malfunction.

Environmental information

We have reduced the packaging to its minimum and made it easy to separate into mono materials: cardboard, PS, PE and PET. Your set consists of material which can be recycled if disassembled by a specialized company. Please observe the local regulations to dispose of packaging, exhausted batteries and old equipment.

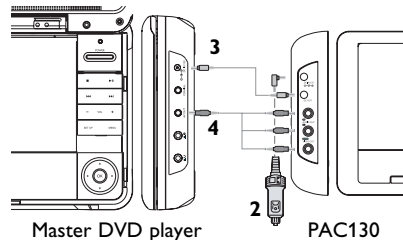
Copyright information

All other brand and product names are trademarks of their respective companies or organizations.

3 Connection

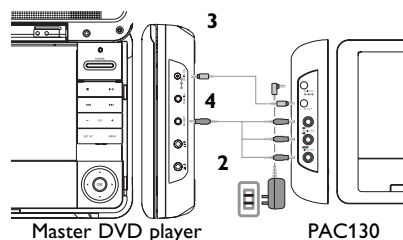
Make sure that the master DVD player; slave LCD screen and any other electrical equipment are off before connection.

3.1 Use in car environment



- 1 Mount the devices to the headrest with the mounting kits.
- 2 Connect the car adapter power plug to the PAC130
- 3 Connection the power source to the master DVD with the power cord
- 4 Connection the video and audio signal to the devices

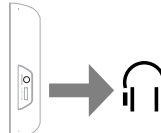
3.2 Use at home



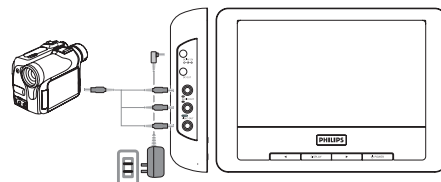
- 1 Connect the AC/DC adapter power plug to the PAC130
- 2 Connection the power source to the master DVD with the power cord
- 3 Connection the video and audio signal to the devices

3.3 Connect to headphone

Connect the headphones to the right side of the player for private listening.



3.4 Connect to camcorder



You can connect with you Camcorder to view video with bigger screen.

- 1 Connect the PAC130 to power source
- 2 Connect to video/audio between the the camcorder and PAC130

4 Enjoyment

During enjoy the video you can adjust the sound volume and screen display brightness.

4.1 Screen brightness and contrast

- 1 Power on the connected device such as master DVD player, camcorder etc.
- 2 Power on the PAC130
- 3 PAC130 will show the video content automatically
- 4 Power off all the devices when you finish enjoyment

4.2 Volume control

Adjust the rotary volume control on the right side of the screen.

4.3 Screen brightness and contrast

- 1 Press **DISPLAY** repeatedly for brightness or contract setting.
- 2 Press ◀ or ▶ key to adjust the values.

5 Troubleshooting

If it appears that the DVD-Video player is faulty, first consult this checklist. It may be that something has been overlooked.

WARNING Under no circumstances should you try to repair the set yourself as this will invalidate the guarantee. If a fault occurs, first check the points listed, before taking the set for repair. If you are unable to solve a problem by following these hints, consult your dealer or service centre.

Symptom	Remedy
No sound	<ul style="list-style-type: none"> • Make sure system connection is correct. • Make sure the speakers are turned on. • Make sure the audio source is correct.
No sound	<ul style="list-style-type: none"> • Make sure LCD screen is on and in correct video mode. • Make sure your system connection is correct. • Make sure the video source is correct.
No video	<ul style="list-style-type: none"> • Make sure all the connected device is power on. • Make sure your system connection is correct. • Make sure the master device such as DVD player, camcorder start to playback video • Sometimes the video out of the master devices have to be switched on / activated.

6 Technical data

TFT screen size	7 inches
Weight	0.86 kg / 1.89 lb
Power supply	DC 9V 1.8A
Power Consumption	≤ 20W
Operating temperature range	0 - 50°C (32 - 122°F)
Video system	NTSC / PAL / AUTO

PHILIPS reserves the right to make design and specification changes for product improvement without prior notice. Modifications not authorized by the manufacturer may void users authority to operate this device. All rights reserved.