

Always there to help you

Register your product and get support at
www.philips.com/welcome



BTM2335



User manual

PHILIPS

Contents

1 Important	2
Safety	2

2 Notice	3
-----------------	---

3 Your micro system	4
Introduction	4
What's in the box	4
Overview of the main unit	5
Overview of the remote control	6

4 Get started	7
Connect speakers	7
Connect power	7
Demonstrate the features	7
Prepare the remote control	7
Set clock	8
Turn on	8

5 Play	9
Play from disc	9
Play from USB	9
Control play	10
Skip to a track	10
Program tracks	10
Play from Bluetooth-enabled devices	10

6 Listen to the radio	12
Tune to a radio station	12
Program radio stations automatically	12
Program radio stations manually	12
Select a preset radio station	12

7 Other features	13
Set the alarm timer	13
Set the sleep timer	13
Listen to an external device	13

8 Product information	14
Specifications	14
USB playability information	15
Supported MP3 disc formats	15

9 Troubleshooting	16
--------------------------	----

1 Important

Safety

Safety



Warning

- Never remove the casing of this apparatus.
 - Never lubricate any part of this apparatus.
 - Never look into the laser beam inside this apparatus.
 - Never place this apparatus on other electrical equipment.
 - Keep this apparatus away from direct sunlight, naked flames or heat.
 - Ensure that you always have easy access to the power cord, plug or adaptor to disconnect the apparatus from the power.
-
- The device shall not be exposed to dripping or splashing.
 - Do not place any source of danger on the device (e.g. liquid filled objects, lit candles).
 - Where the MAINS plug or an appliance coupler is used as the disconnect device, the disconnect device shall remain readily operable.
 - Make sure that there is enough free space around the product for ventilation.
 - Only use attachments/accessories specified by the manufacturer.

2 Notice

Any changes or modifications made to this device that are not expressly approved by WOOX Innovations may void the user's authority to operate the equipment.

CE 0890

Hereby, WOOX Innovations declares that this product is in compliance with the essential requirements and other relevant provisions of Directive 1999/5/EC. You can find the Declaration of Conformity on www.philips.com/support.



Your product is designed and manufactured with high quality materials and components, which can be recycled and reused.



When this crossed-out wheeled bin symbol is attached to a product it means that the product is covered by the European Directive 2002/96/EC. Please inform yourself about the local separate collection system for electrical and electronic products.

Please act according to your local rules and do not dispose of your old products with your normal household waste. Correct disposal of your old product helps to prevent potential negative consequences for the environment and human health.



Your product contains batteries covered by the European Directive 2006/66/EC, which cannot be disposed with normal household

waste. Please inform yourself about the local rules on separate collection of batteries because correct disposal helps to prevent negative consequences for the environmental and human health.

Environmental information

All unnecessary packaging has been omitted. We have tried to make the packaging easy to separate into three materials: cardboard (box), polystyrene foam (buffer) and polyethylene (bags, protective foam sheet.)

Your system consists of materials which can be recycled and reused if disassembled by a specialized company. Please observe the local regulations regarding the disposal of packaging materials, exhausted batteries and old equipment.



This item incorporates copy protection technology that is protected by U.S. patents and other intellectual property rights of Rovi Corporation. Reverse engineering and disassembly are prohibited.

Bluetooth

The Bluetooth® word mark and logos are registered trademarks owned by Bluetooth SIG, Inc. and any use of such marks by WOOX Innovations is under license.

This apparatus includes this label:



Note

- The type plate is located on the back of the device.

3 Your micro system

Congratulations on your purchase, and welcome to Philips! To fully benefit from the support that Philips offers, register your product at www.philips.com/welcome.

Introduction

With this unit, you can:

- enjoy audio from discs, Bluetooth-enabled devices, USB storage devices, or other external devices;
- listen to FM radio stations.

You can enrich sound output with below sound effect:

- Digital Sound Control (DSC)
 - DSC 1: Powerful
 - DSC 2: Clear
 - DSC 3: Balanced
 - DSC 4: Warm
 - DSC 5: Bright

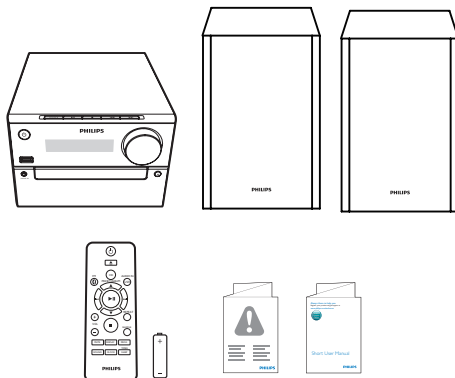
The unit supports these media formats:



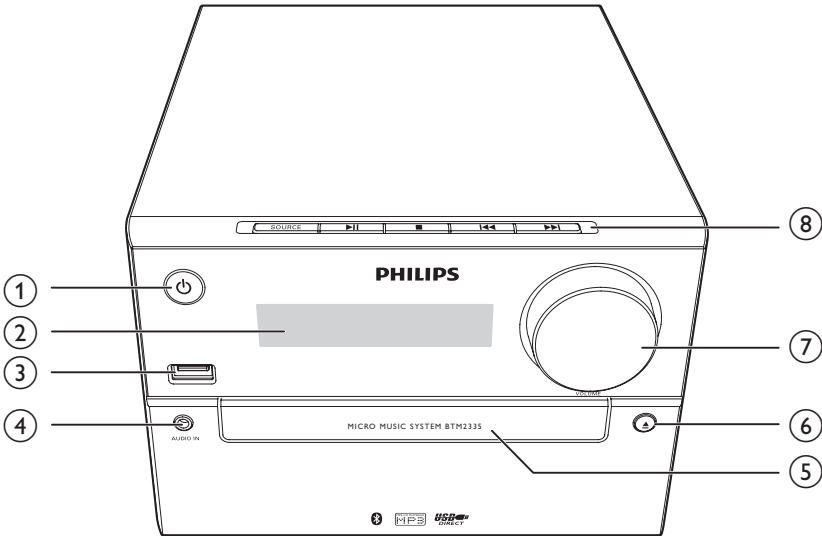
What's in the box

Check and identify the contents of your package:

- Main unit
- 2 x speakers
- Remote control (with one AAA battery)
- Short user manual
- Safety and notice



Overview of the main unit



①

- Turn on the product.
- Switch to standby mode or Eco power standby mode.

② **Display panel**

- Show current status.

③

- Connect USB storage devices.
- Charge your device.

④ **AUDIO IN**

- Connect external audio devices.

⑤ **Disc compartment**

⑥

- Open or close the disc compartment.

⑦ **VOLUME**

- Adjust volume.

⑧ **SOURCE**

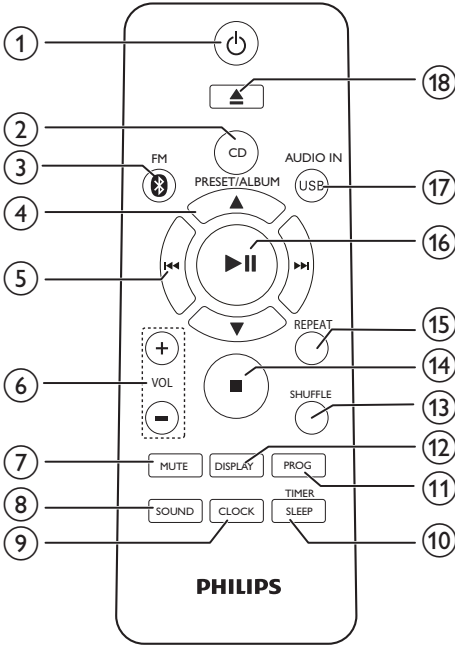
- Select a source: DISC, USB, TUNER, AUDIO IN, BT (Bluetooth).


- Start, pause, or resume play.

- Stop play or erase a program.

- Skip to previous/next track.
- Search within a track/disc/USB.
- Tune to a radio station.
- Adjust time.

Overview of the remote control



- ① **⏻**
- Turn the unit on or off.
 - switch to standby mode or Eco power standby mode.
- ② **CD**
- Select CD source.
- ③ **FM/ **
- Select FM or Bluetooth source.
- ④ **PRESET/ALBUM ▲ / ▼**
- Select a preset radio station.
 - Skip to previous/next album.
- ⑤ **◀◀ / ▶▶**
- Skip to the previous/next track.
 - Search within a track/disc/USB.
 - Tune to a radio station.
 - Adjust time.

- ⑥ **VOL +/-**
- Adjust volume.
- ⑦ **MUTE**
- Mute or restore volume.
- ⑧ **SOUND**
- Enrich sound effect with Digital Sound Control (DSC).
- ⑨ **CLOCK**
- Set the clock.
 - View clock information.
- ⑩ **SLEEP/TIMER**
- Set sleep timer.
 - Set alarm timer.
- ⑪ **PROG**
- Program tracks.
 - Program radio stations.
 - Auto store FM radio stations.
- ⑫ **DISPLAY**
- Adjust display brightness.
- ⑬ **SHUFFLE**
- Play tracks randomly.
- ⑭ **■**
- Stop play or erase a program.
- ⑮ **REPEAT**
- Play a track or all tracks repeatedly.
- ⑯ **▶ ||**
- Start, pause, or resume play.
- ⑰ **USB/AUDIO IN**
- Select USB or AUDIO IN source.
- ⑱ **▲**
- Press to open or close the disc compartment.

4 Get started

! Caution

- Use of controls or adjustments or performance of procedures other than herein may result in hazardous radiation exposure or other unsafe operation.

Always follow the instructions in this chapter in sequence.

If you contact Philips, you will be asked for the model and serial number of this apparatus. The model number and serial number are on the back of the apparatus. Write the numbers here:

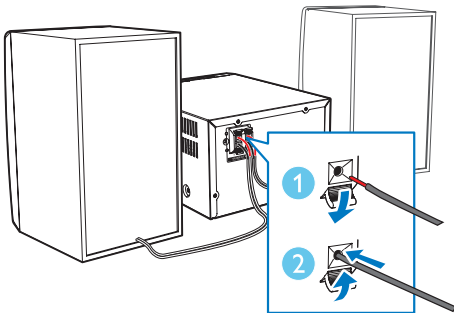
Model No. _____

Serial No. _____

Connect speakers

≡ Note

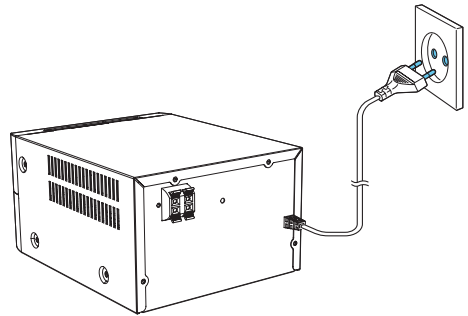
- For optimal sound, use the supplied speakers only.
- Connect only speakers with impedance that is the same or higher than the supplied speakers. Refer to the Specifications section of this manual.



Connect power

! Caution

- Risk of product damage! Ensure that the power supply voltage corresponds to the voltage printed on the back or the underside of the unit.
- Risk of electric shock! When you unplug the AC power cord, always pull the plug from the socket. Never pull the cord.
- Before you connect the AC power cord, ensure that you have completed all other connections.



Demonstrate the features

In standby mode, press **■** to demonstrate features of this device.

- ↳ The features are displayed one by one across the display panel.
- To turn off the demonstration, press **■** again.

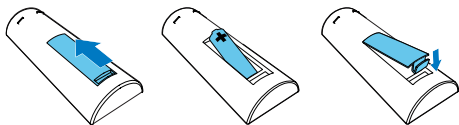
Prepare the remote control

! Caution

- Risk of explosion! Keep batteries away from heat, sunshine or fire. Never discard batteries in fire.
- Risk of decreased battery life! Never mix different brands or types of batteries.
- Risk of product damage! When the remote control is not used for long periods, remove the batteries.

To insert the remote control battery:

- 1 Open the battery compartment.
- 2 Insert the supplied AAA battery with correct polarity (+/-) as indicated.
- 3 Close the battery compartment.



Set clock

- 1 In standby mode, press and hold **CLOCK** on the remote control for more than two seconds.
↳ [24H] or [12H] hour format is displayed.
- 2 Press **◀▶** to select [24H] or [12H] hour format.
- 3 press **CLOCK** to confirm.
↳ The hour digits are displayed and begin to blink.
- 4 Repeat steps 2-3 to set hour and minute.

Note

- If no button is pressed in 90 seconds, the system exits clock setting mode automatically.

Tip

- You can view clock information in power-on mode by pressing **CLOCK**.

Turn on

Press **⏻**.

- ↳ The unit switches to the last selected source.

Switch to standby mode

Press **⏻** again to switch the unit to standby mode.

- ↳ The clock (if set) is displayed on the panel.

Switch to ECO standby mode:

Press and hold **⏻** for more than two seconds.

- ↳ The display panel is dimmed.

Note

- The unit switches to Eco Power Standby mode after 15 minutes in standby mode.

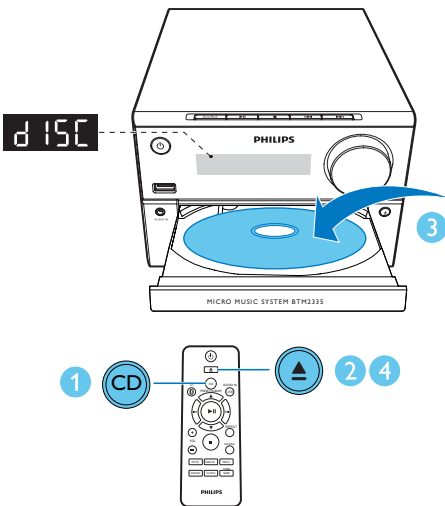
Switch between standby mode and ECO standby mode:

Press and hold **⏻** for more than two seconds.

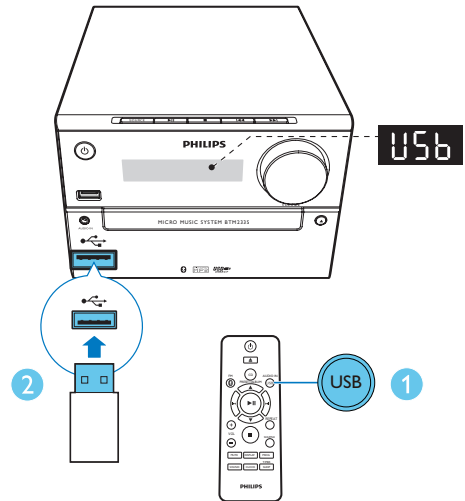
5 Play

Play from disc

- 1 Press **CD** to select the **CD** source.
- 2 Press **▲** to open the disc compartment.
- 3 Insert a disc with printed side facing upward.
- 4 Press **▲** to close the disc compartment.
↳ Play starts automatically. If not, press **▶||**.



- 2 Insert a USB device into the **USB** socket.
↳ Play starts automatically. If not, press **▶||**.



Charge your device

You can charge your device through the USB socket on this product with a USB cable (not supplied).

Note

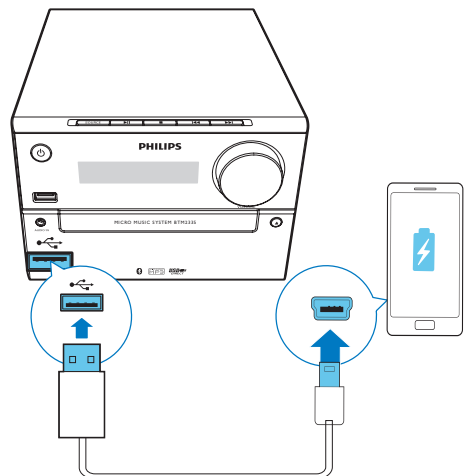
- The maximum current for USB charging is 1 A.
- Not all devices for USB charging are guaranteed.

Play from USB

Note

- Make sure that the USB device contains playable audio content.

- 1 Press **USB/AUDIO IN** repeatedly to select the **USB** source.



Control play

▲ / ▼	Select a folder.
◀◀ / ▶▶	Select an audio file.
▶	Pause or resume play.
■	Stop play.
REPEAT	Play a track or all tracks repeatedly.
SHUFFLE	Play tracks randomly.
VOL +/-	Increase or decrease the volume.
MUTE	Mute or restore sound.
SOUND	Enrich sound effect with DSC: balanced, clear, powerful, warm, and bright.
DISPLAY	Adjust display brightness.

Skip to a track

For CD:

Press ◀◀ / ▶▶ to select another track.

For MP3 disc and USB:

- 1 Press ▲ / ▼ to select an album or a folder.
- 2 Press ◀◀ / ▶▶ to select a track or a file.

Program tracks

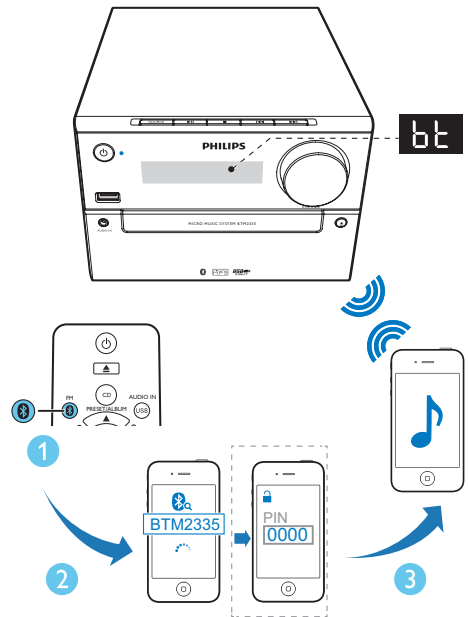
You can program a maximum of 20 tracks.

- 1 Press **PROG** to activate the program mode.
- 2 For MP3 tracks, press ▲ / ▼ to select an album.
- 3 Press ◀◀ / ▶▶ to select a track, and then press **PROG** to confirm.
- 4 Repeat steps 2-3 to program more tracks.
- 5 Press ▶|| to play the programmed tracks.
↳ During play, [**PROG**] (program) is displayed.
 - To erase the program, in the stop position, press ■.

Play from Bluetooth-enabled devices

Note

- The effective operation range between the unit and your Bluetooth enabled device is approximately 10 meters (30 feet).
- Any obstacle between the system and the device can reduce the operational range.
- Compatibility with all Bluetooth devices is not guaranteed.



- 1 Press **FM/** repeatedly to select the **Bluetooth** source.
↳ [**BT**] (Bluetooth) is displayed.
↳ The Bluetooth indicator flashes blue.
- 2 On your device that supports Advanced Audio Distribution Profile (A2DP), enable Bluetooth and search for Bluetooth devices that can be paired (refer to the user manual of the device).

- 3 Select 'Philips BTM2335' on your Bluetooth enabled device and if necessary input '0000' as the pairing password.
 - ↳ After successful pairing and connection, the Bluetooth indicator turns solid blue, and the unit beeps.
- 4 Play audio on the connected device.
 - ↳ Audio streams from your Bluetooth enabled device to this unit.



Tip

- The unit can memorize up to 4 previously connected Bluetooth devices.

To disconnect the Bluetooth-enabled device:

- Deactivate Bluetooth on your device; or
- Move the device beyond the communication range; or
- Press and hold **▶||** for 3 seconds.
 - ↳ The current Bluetooth connection is disconnected.

To clear Bluetooth pairing history:

- Press and hold **■** for 10 seconds.
 - ↳ The current Bluetooth is cleared.


6 Listen to the radio

Tune to a radio station



Tip

- Position the antenna as far as possible from TV, VCR, or other radiation source.
- For optimal reception, fully extend and adjust the position of the antenna.

- 1 Press **FM** /  repeatedly to select the **FM** source.
- 2 Press and hold **◀◀** / **▶▶** for more than two seconds.
 - ↳ The radio tunes to a station with strong reception automatically.

- 3 Repeat step 2 to tune to more stations.

To tune to a weak station:

Press **◀◀** / **▶▶** repeatedly until you find optimal reception.

Program radio stations manually

- 1 Tune to a radio station.
- 2 Press **PROG**, and then press **▲** / **▼** to select a number from 1–20.
- 3 Press **PROG** to confirm.
 - ↳ The preset number and the frequency of the preset station are displayed.
- 4 Repeat steps 2-3 to program more stations.



Note

- To overwrite a programmed station, store another station in its place.

Select a preset radio station

In tuner mode, press **▲** / **▼** to select a preset number.

Program radio stations automatically



Note

- You can program a maximum of 20 preset radio stations (FM).

In tuner mode, press and hold **PROG** for more than two seconds to activate automatic programming.

- ↳ All available stations are programmed in the order of waveband reception strength.
- ↳ The first programmed radio station is broadcast automatically.

7 Other features

Set the alarm timer

This unit can be used as an alarm clock. You can select CD, FM, or USB as alarm source.

Note

- Make sure that you have set the clock correctly.

- 1 In standby mode, press and hold **SLEEP/TIMER** for more than two seconds.
↳ The hour digits are displayed and begin to blink.
- 2 Press **◀▶** repeatedly to set hour.
- 3 Press **SLEEP/TIMER** to confirm.
↳ The minute digits are displayed and begin to blink.
- 4 Repeat steps 2-3 to set minute, select a source (**CD**, **FM**, or **USB**), and adjust volume.

Note

- If no button is pressed in 90 seconds, the system exits timer setting mode automatically.

To activate or deactivate the alarm timer:
Press **SLEEP/TIMER** repeatedly to activate or deactivate the alarm.
↳ If timer is activated, **⌚** is displayed.

Tip

- If CD/USB source is selected, but no disc is placed or no USB connected, the system switches to the tuner source automatically.

Set the sleep timer

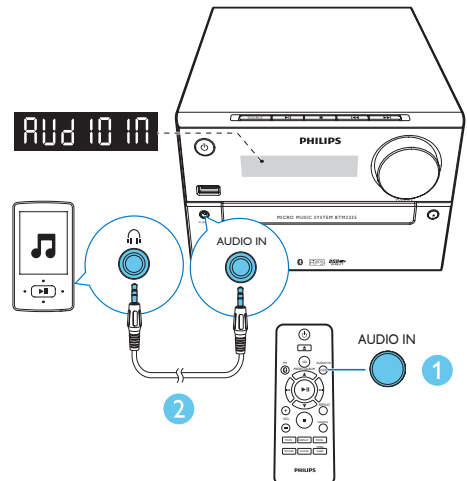
To set the sleep timer; in turn on mode, press **SLEEP/TIMER** repeatedly to select a set period of time (in minutes).

- ↳ When sleep timer is activated, **zZ** is displayed. Otherwise, **zZ** disappears.

Listen to an external device

You can listen to an external device through this unit with an MP3 link cable.

- 1 Press **USB/AUDIO IN** repeatedly to select **AUDIO IN** source.
- 2 Connect an MP3 link cable (not supplied) between:
 - **AUDIO IN** jack (3.5 mm) on the unit,
 - and the headphone jack on an external device.
- 3 Start to play the device (see the device user manual).



8 Product information

Note

- Product information is subject to change without prior notice.

Specifications

Amplifier

Maximum Output Power	30 W
Frequency Response	60 Hz - 16 kHz; +3 dB
Signal to Noise Ratio	≥70 dBA
Total Harmonic Distortion	<1%
Aux Input	800 mV RMS

Speakers

Speaker Impedance	4 ohm
Speaker Driver	Full range 4"
Speaker Sensitivity	>83 dB/m/W

Bluetooth

Bluetooth Version	V4.0
Bluetooth Frequency Band	2.4 GHz ~ 2.48 GHz ISM Band
Bluetooth Range	10 m (free space)

Tuner (FM)

Tuner Tuning Range	87.5-108 MHz
Tuner Tuning grid	50 KHz
Tuner Sensitivity	
- Mono, 26dB S/N Ratio	<22 dB u
- Stereo, 46dB S/N Ratio	<45 dB u
Search Selectivity	<30 dB u
Total Harmonic Distortion	<3%
Signal to Noise Ratio	>45 dBA

USB

USB Direct Version	2.0 full speed
USB 5 V Power	≤1 A

Disc

Laser Type	Semiconductor
Disc Diameter	12 cm/8 cm
Support Disc	CD-DA, CD-R, CD-RW, MP3-CD
Audio DAC	24 Bits/44.1 kHz
Total Harmonic Distortion	<1% (1 kHz)
Distortion	
Frequency Response	60 Hz - 16 kHz; ±3 dB
S/N Ratio	>70 dBA

General information

AC power	100-240V~, 50/60 Hz
Operation Power Consumption	20 W
Eco Standby Power Consumption	<0.5 W
Dimensions	
- Main Unit (W × H × D)	180 × 121 × 247 mm
- Speaker Box (W × H × D)	156 × 253.5 × 128 mm
Weight	
- Main Unit	1.6 kg
- Speaker Box	2 × 1.10 kg

USB playability information

Compatible USB devices:

- USB flash memory (USB2.0 or USB1.1)
- USB flash players (USB2.0 or USB1.1)
- memory cards (requires an additional card reader to work with this unit)

Supported USB formats:

- USB or memory file format: FAT12, FAT16, FAT32 (sector size: 512 bytes)
- MP3 bit rate (data rate): 32-320 Kbps and variable bit rate
- Directory nesting up to a maximum of 8 levels
- Number of albums/ folders: maximum 99
- Number of tracks/titles: maximum 999
- File name in Unicode UTF8 (maximum length: 32 bytes)

Unsupported USB formats:

- Empty albums: an empty album is an album that does not contain MP3/WMA files, and will not be shown in the display.
- Unsupported file formats are skipped. For example, word documents (.doc) or MP3 files with extension .dlf are ignored and not played.
- WMA, AAC, WAV, PCM audio files
- DRM protected WMA files (.wav, .m4a, .m4p, .mp4, .aac)
- WMA files in Lossless format

Supported MP3 disc formats

- ISO9660, Joliet
- Maximum title number: 128 (depending on file name length)
- Maximum album number: 99
- Supported sampling frequencies: 32 kHz, 44.1 kHz, 48 kHz
- Supported Bit-rates: 32~256 (kbps), variable bit rates

9 Troubleshooting



Warning

- Never remove the casing of this device.

To keep the warranty valid, never try to repair the system yourself.

If you encounter problems when using this device, check the following points before requesting service. If the problem remains unsolved, go to the Philips Web page (www.philips.com/support). When you contact Philips, make sure that the device is nearby and the model number and serial number are available.

No power

- Make sure that the AC power cord of the device is connected properly.
- Make sure that there is power at the AC outlet.
- As a power-saving feature, the system switches off automatically 15 minutes after track play reaches the end and no control is operated.

No sound or poor sound

- Adjust the volume.
- Check that the speakers are connected correctly.
- Check if the stripped speaker wires are clamped.

No response from the unit

- Disconnect and reconnect the AC power plug, then turn on the unit again.

Remote control does not work

- Before you press any function button, first select the correct source with the remote control instead of the main unit.
- Reduce the distance between the remote control and the unit.
- Insert the battery with its polarities (+/- signs) aligned as indicated.
- Replace the battery.
- Aim the remote control directly at the sensor on the front of the unit.

No disc detected

- Insert a disc.
- Make sure that the disc is inserted with printed side facing upward.
- Wait until the moisture condensation at the lens has cleared.
- Replace or clean the disc.
- Use a finalized CD or correct format disc.

Cannot display some files in USB device

- The number of folders or files in the USB device has exceeded a certain limit. This phenomenon is not a malfunction.
- The formats of these files are not supported.

USB device not supported

- The USB device is incompatible with the unit. Try another one.

Poor radio reception

- Increase the distance between the unit and your TV or VCR.
- Fully extend the FM antenna.

Music playback is unavailable on this unit even after successful Bluetooth connection.

- The device cannot be used to play music through this unit wirelessly.

The audio quality is poor after connection with a Bluetooth-enabled device.

- The Bluetooth reception is poor. Move the device closer to this unit or remove any obstacle between them.

Bluetooth cannot be connected with this unit.

- The device does not support the profiles required for this unit.
- The Bluetooth function of the device is not enabled. Refer to the user manual of the device to find out how to enable the function.
- This unit is not in pairing mode.
- This unit is already connected with another Bluetooth-enabled device. Disconnect that device and then try again.

The paired mobile device connects and disconnects constantly.

- The Bluetooth reception is poor. Move the device closer to this unit or remove any obstacle between them.

- Some mobile phones may connect and disconnect constantly when you make or end calls. This does not indicate any malfunction of this unit.
- For some devices, the Bluetooth connection may be deactivated automatically as a power-saving feature. This does not indicate any malfunction of this unit.

Timer does not work

- Set the clock correctly.
- Switch on the timer:

Clock/timer setting erased

- Power has been interrupted or the power cord has been disconnected.
- Reset the clock/timer.



2014 © WOOX Innovations Limited. All rights reserved.

Philips and the Philips' Shield Emblem are registered trademarks of Koninklijke Philips N.V. and are used by WOOX Innovations Limited under license from Koninklijke Philips N.V.

BTM2335_12_UM_V2.0

