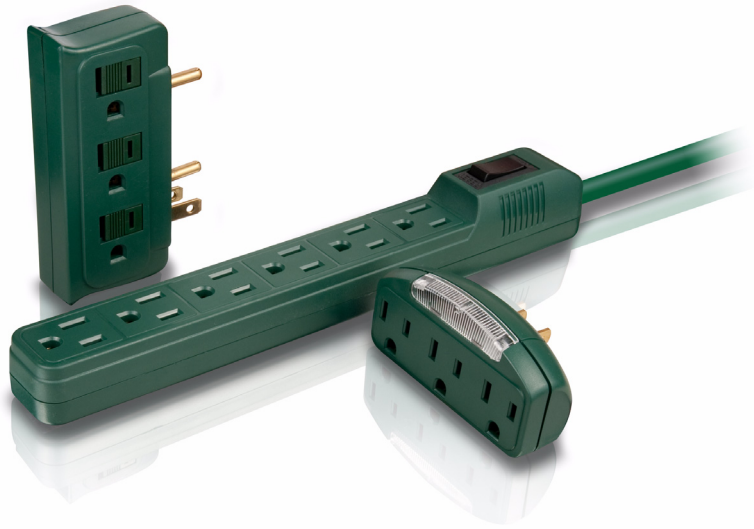


Philips
Power strip

SPS2690WB



Multiple Outlet

Expand your number of outlets

This value pack of multiple outlet adapters allows you to expand 1 grounded outlet into 3 or expand 1 grounded outlet into 6.

Plug more

- Converts 1 grounded outlet into 3
- Expands 1 grounded outlet into 6

Dependable protection

- 15 amp circuit breaker
- 6 child-safe outlets

Auto night light

- Sensor activated night light

PHILIPS
sense and simplicity

Specifications

Packaging dimensions

- Packaging dimensions (W x H x D): 6.4 x 13.4 x 2 inch
- Nett weight: 0.772 lb
- Gross weight: 0.838 lb
- Tare weight: 0.066 lb
- UPC: 6 09585 17429 0
- Number of products included: 1
- Packaging type: Card
- Type of shelf placement: Laying

Outer Carton

- GTIN: 1 06 09585 17429 7
- Gross weight: 7.504 lb
- Outer carton (L x W x H): 13.5 x 7.4 x 14.1 inch
- Nett weight: 4.63 lb
- Number of consumer packagings: 6
- Tare weight: 2.875 lb

Highlights

15 amp circuit breaker

Safeguards against overburdening the power multiplier by sensing when the connected equipment is drawing more electricity than the power multiplier can handle. It then disconnects from the power, guarding against electrical fires.

6 child-safe outlets

Safety slides provide a protective barrier that block the outlet so small objects cannot get in. Keeps children safer.

Sensor activated night light

A sensor activated night light that turns on automatically in the dark



Issue date 2009-11-06

Version: 1.1.6

12 NC: 8670 000 54232
UPC: 6 09585 17429 0

© 2009 Koninklijke Philips Electronics N.V.
All Rights reserved.

Specifications are subject to change without notice.
Trademarks are the property of Koninklijke Philips
Electronics N.V. or their respective owners.

www.philips.com