

Register your product and get support at
www.philips.com/welcome

HTS9520

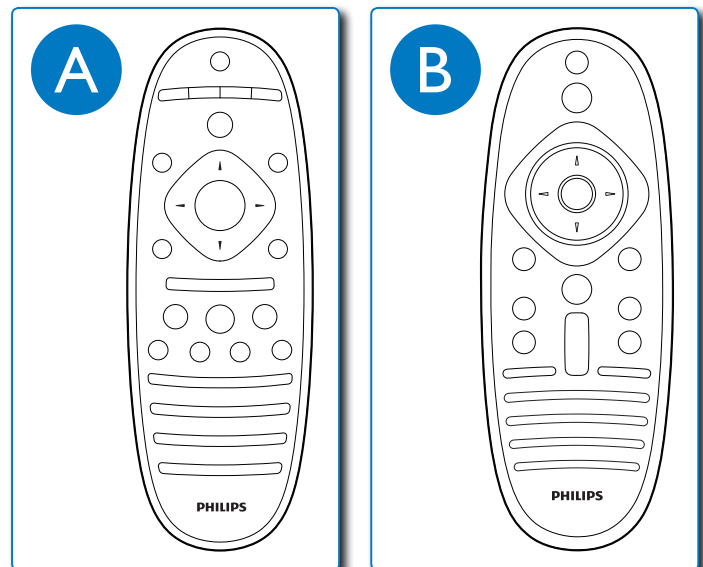


Quick Start

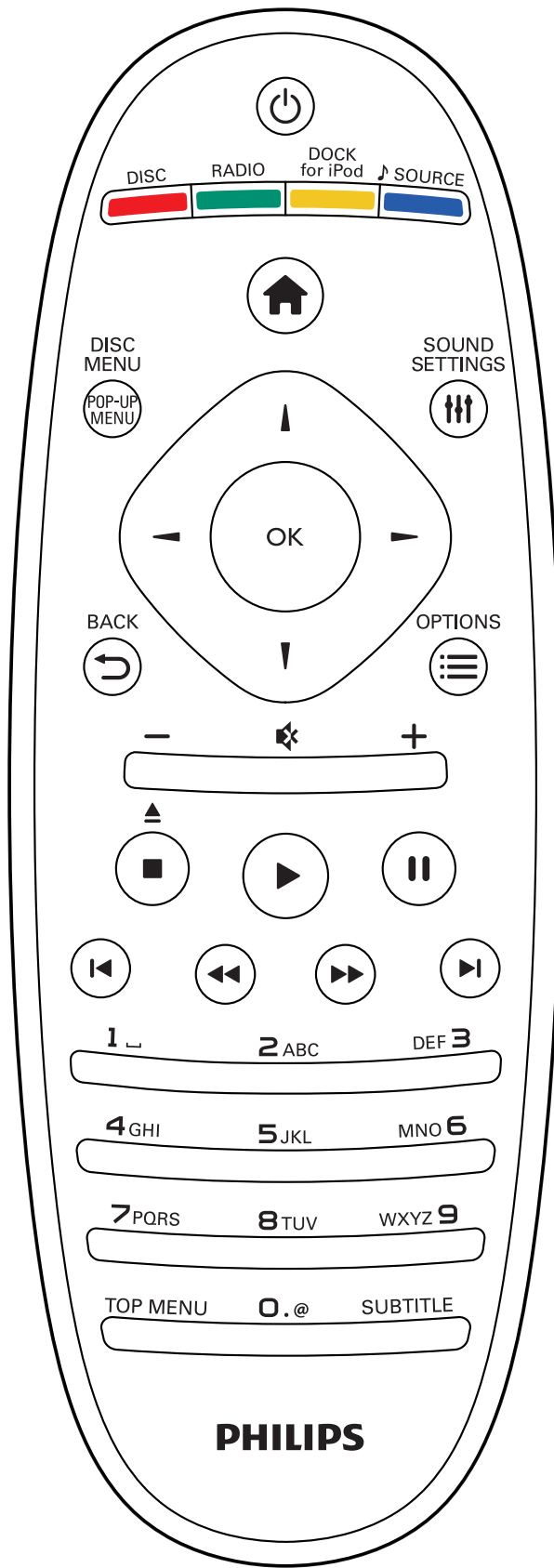
PHILIPS

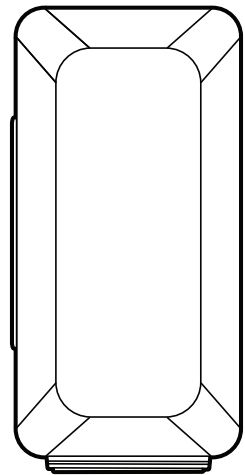
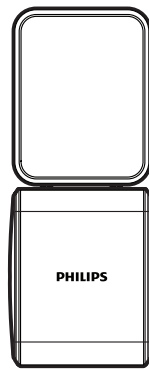
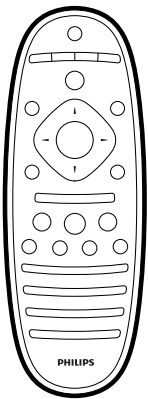
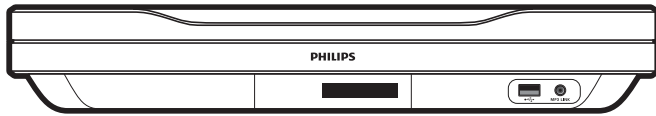


- EN** This document contains two Quick start guides. To set up your home theater, click on the image that corresponds to the remote control available in your box.
- DE** Dieses Dokument enthält zwei Kurzanleitungen. Um Ihr Heimkino einzurichten, klicken Sie auf das Bild, das der in Ihrem Paket enthaltenen Fernbedienung entspricht.
- FR** Ce document contient deux guides de démarrage rapide. Pour configurer votre système Home Cinéma, cliquez sur l'image correspondant à la télécommande fournie dans la boîte.
- NL** Dit document bevat twee Snelstartgidsen. Om uw home cinema in te stellen, klikt u op de afbeelding die overeenkomt met de afstandsbediening in de doos.
- IT** Questo documento contiene due Guide di avvio rapido. Per impostare il sistema Home Theater, fare clic sull'immagine corrispondente al telecomando disponibile nella scatola.
- ES** Este documento incluye dos guías de inicio rápido. Para configurar su sistema de cine en casa, haga clic en la imagen que corresponde al mando a distancia disponible en la caja.
- PT** Este documento contém dois Guias de início rápido. Para configurar o sistema de cinema em casa, clique na imagem correspondente ao telecomando disponível na sua caixa.
- DA** Dette dokument indeholder to lynvejledninger. For at sætte din hjemmebiograf op, skal du klikke på det billede, som svarer til den fjernbetjening, som er tilgængelig i din boks.
- SV** Detta dokument innehåller två snabbstartsguider. För att installera din hemmabio, ska du klicka på bilden som överensstämmer med fjärrkontrollen i förpackningen.
- NO** Dette dokumentet inneholder to hurtigstartguider. Når du skal konfigurere hjemmekinosystemet, klikker du bildet som svarer til fjernkontrollen i esken du fikk.
- FI** Tässä asiakirjassa on kaksi pikaopasta. Ota kotiteatteri käyttöön napsauttamalla kuvaa, joka vastaa pakkauksessa olevaa kaukosäädintä.
- EL** Το έγγραφο αυτό περιέχει δύο οδηγούς Γρήγορης εκκίνησης. Για να ρυθμίσετε το σύστημα home theater, κάντε κλικ στην εικόνα που αντιστοιχεί στο διαθέσιμο τηλεχειριστήριο της συσκευασίας σας.
- RU** В этом документе содержатся два руководства по началу работы. Чтобы настроить ваш домашний кинотеатр, щелкните на изображении, соответствующем пульту ДУ, находящемуся в коробке.
- PL** Niniejszy dokument zawiera dwie skrócone Instrukcje obsługi. Aby skonfigurować swoje kino domowe należy kliknąć na obraz, który odpowiada pilotowi zdalnego sterowania z Twojego opakowania.
- HU** Ez a dokumentum két üzembe helyezési útmutatót tartalmaz. A házimozirendszer beállításához kattintson a csomagban található távirányítónak megfelelő képre.
- SK** Tento dokument obsahuje dve stručné príručky. Ak chcete nastaviť svoje domáce kino, kliknite na obrázok, ktorý zodpovedá diaľkovému ovládaču nachádzajúcemu sa v balení.
- CS** Tento dokument obsahuje dvě příručky Rychlý start. Chcete-li nastavit domácí kino, klikněte na obrázek dálkového ovládní dodaného v balení produktu.
- TR** Bu belge iki Hızlı başlangıç kılavuzu içerir. Ev sinema sisteminizi kurmak için kutunuzdan çıkan uzaktan kumandaya uygun resmi tıklayın.
- RO** Acest document conține două ghiduri de Pornire rapidă. Pentru a vă configura aparatul dumneavoastră home theater, faceți clic pe imaginea care corespunde telecomenzii disponibile în cutia dumneavoastră.
- UK** Цей документ містить два Коротких посібники. Щоб налаштувати систему домашнього кінотеатру, клацніть на зображенні, яке відповідає пульта дистанційного керування в комплекті.
- PT BR** Este documento contém dois guias de Instruções básicas de uso. Para configurar seu home theater, clique na figura correspondente ao controle remoto disponível na caixa do produto.
- ES MX** Este documento contiene dos Guías de inicio rápido. Para configurar su sistema de cine en casa, haga clic en la imagen que corresponde al control remoto disponible en el televisor.
- MS** Dokumen ini mengandungi dua Panduan bermula ringkas. Untuk membuat persediaan teater rumah anda, klik pada imej yang sepadan dengan alat kawalan jauh yang tersedia dalam kotak anda.
- HI** इस दस्तावेज़ में दो क्विक स्टार्ट गाइड शामिल हैं। अपना होम थिएटर सेट करने के लिए, अपने बॉक्स में दिए गए रिमोट कंट्रोल से दिए गए चित्र पर क्लिक करें।
- ZH CN** 本文档包含两个快速入门指南。要设置您的家庭影院，请单击与包装盒中的遥控器相对应的图片。
- ZH HK** 本文件包含两份快速入门指南。如果要安装家庭影院，按一下對應到盒子中遥控器的影像。

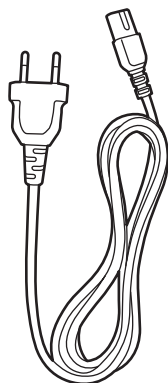
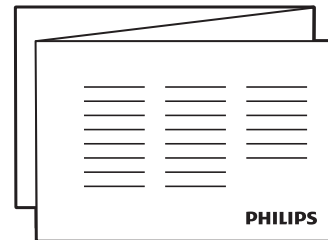
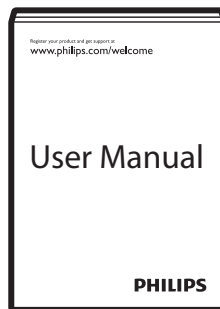


A

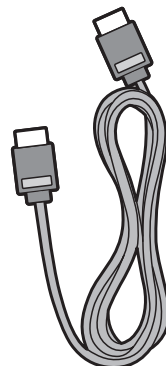




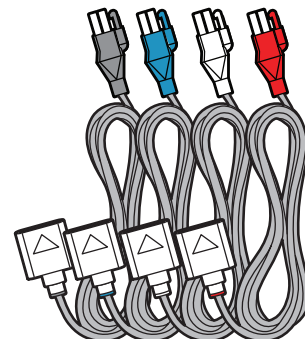
FM Antenna



Power Cord

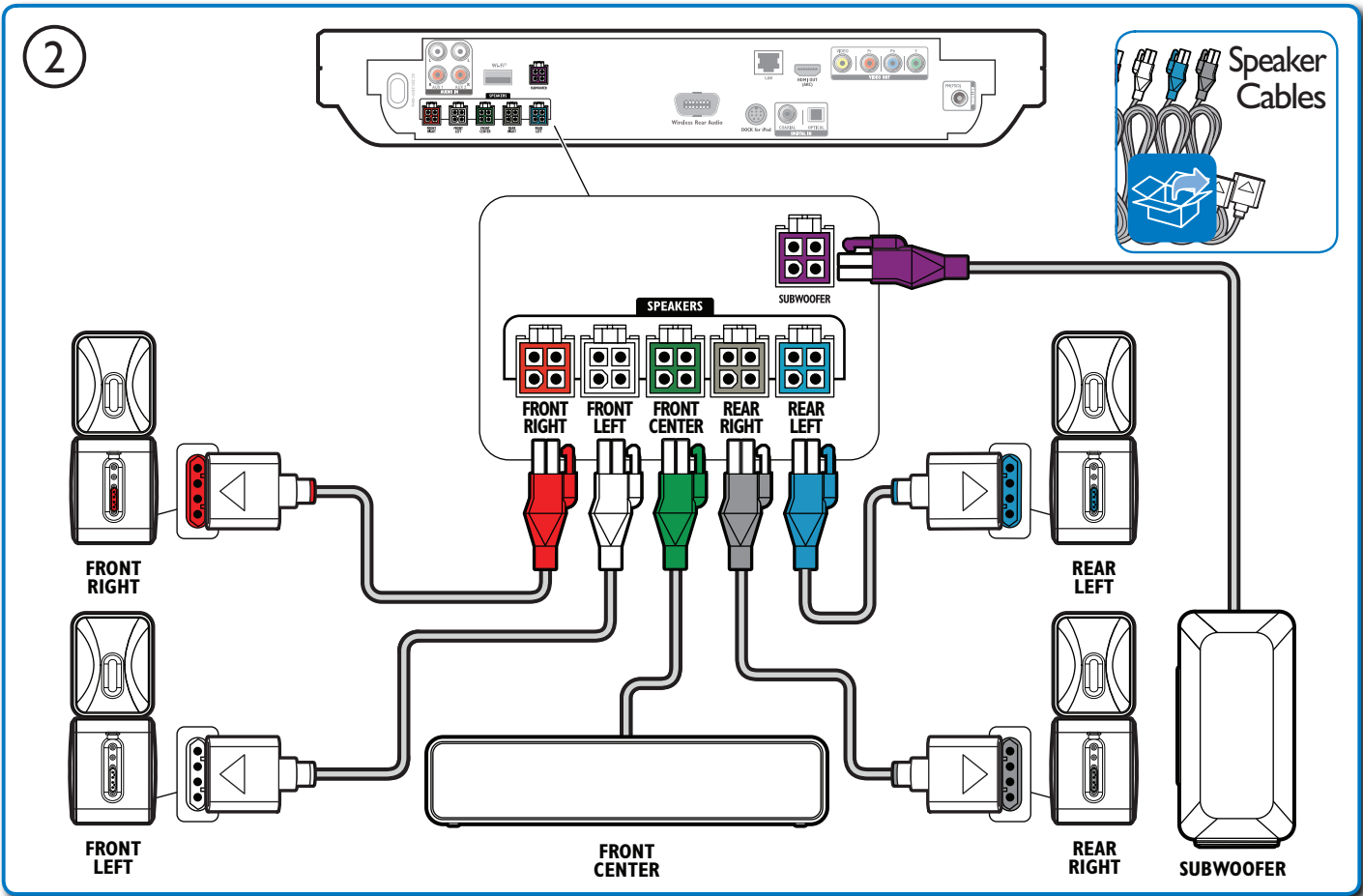
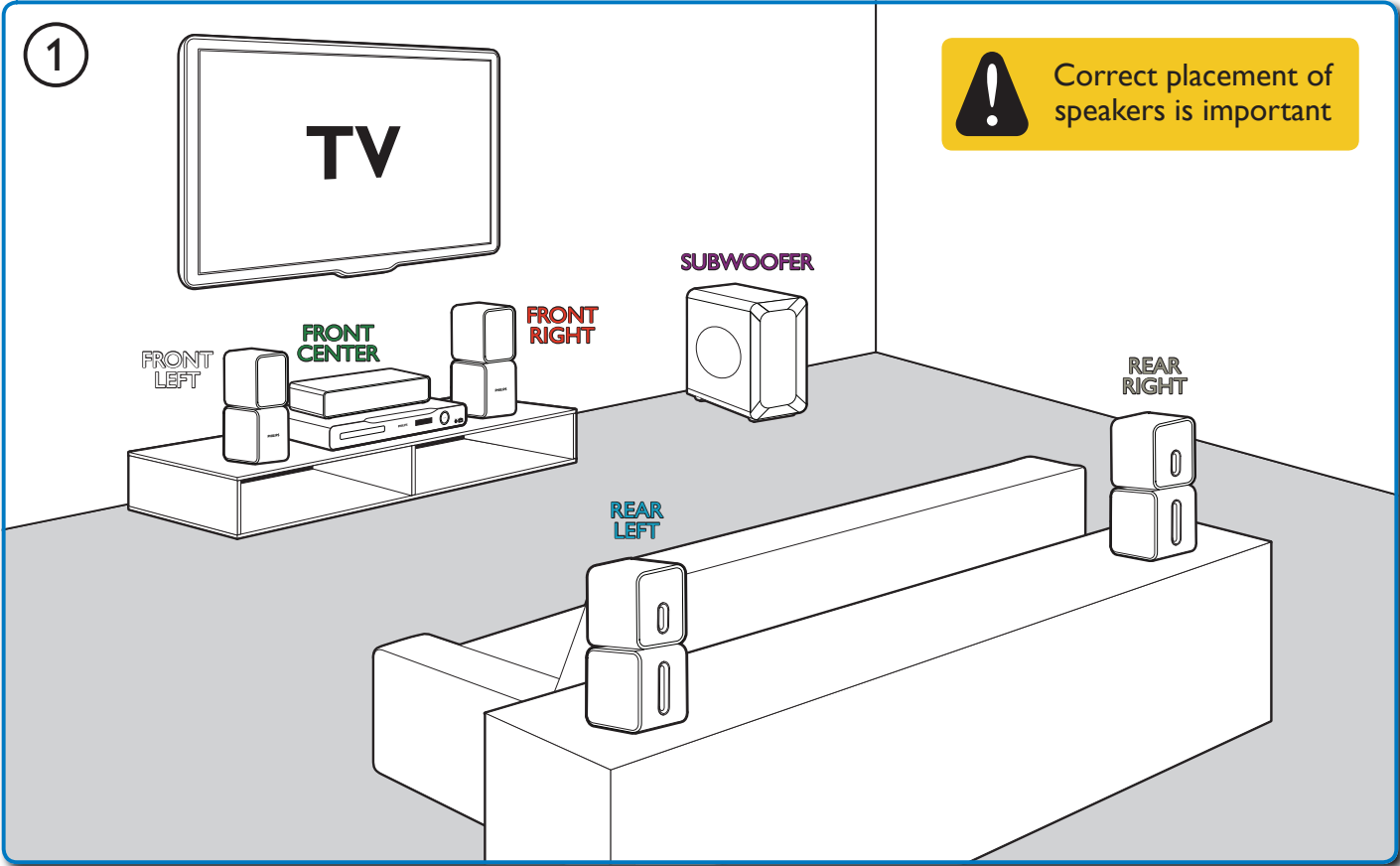


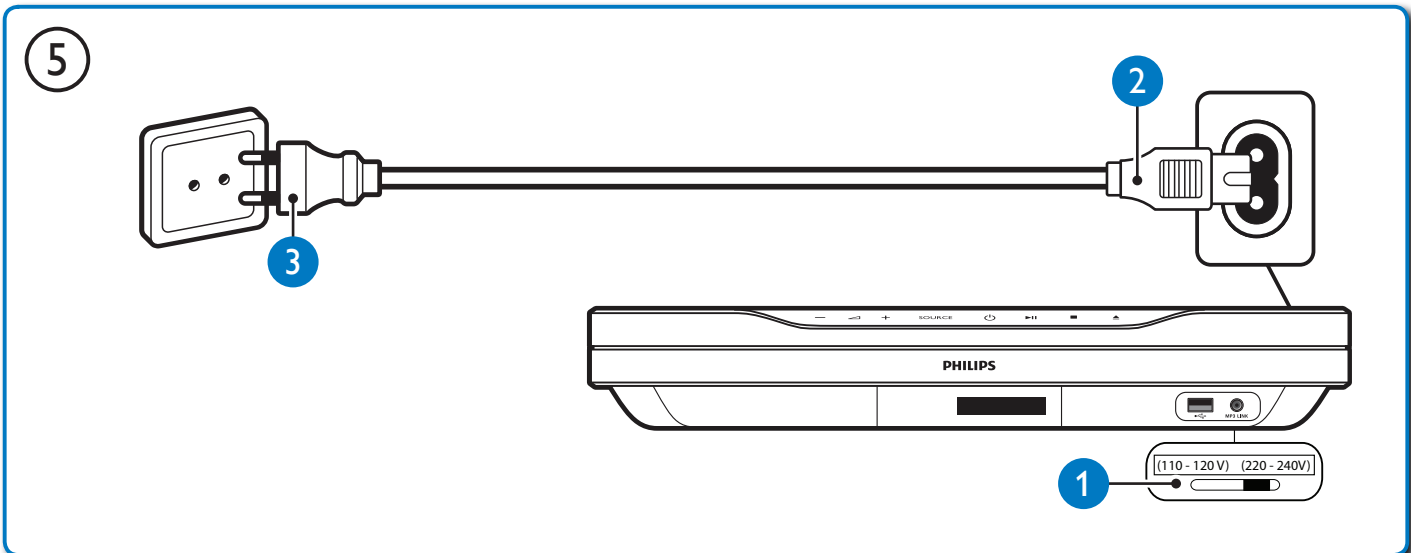
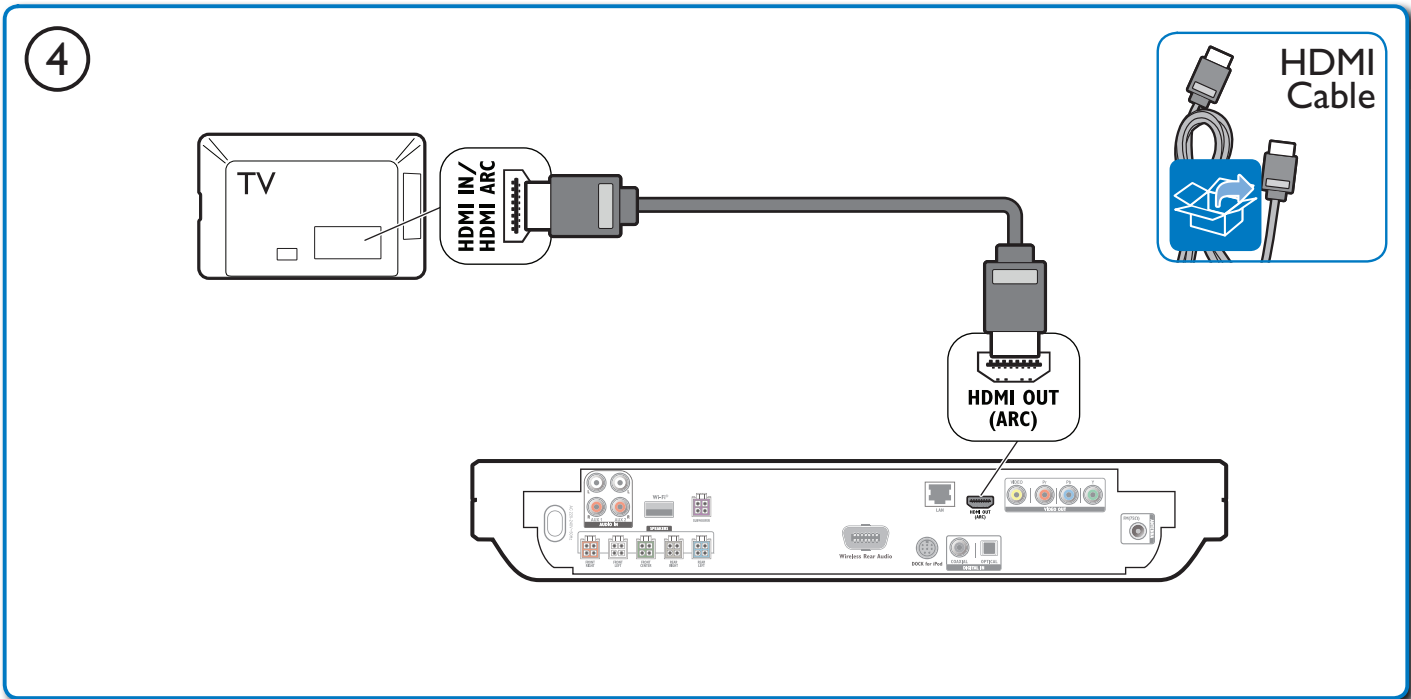
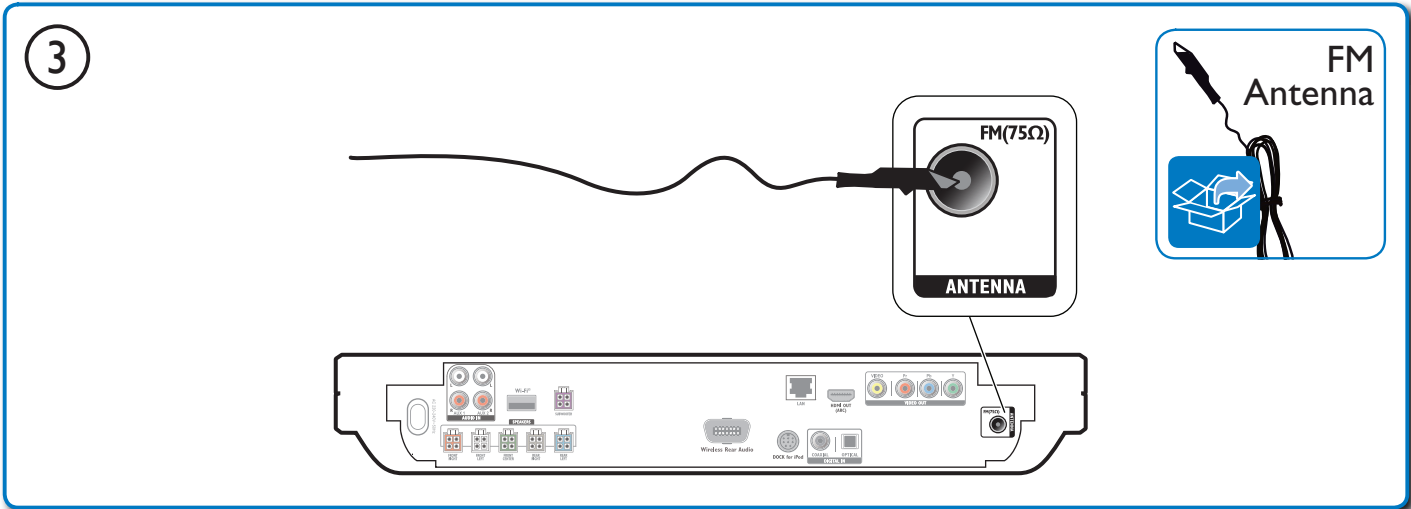
HDMI



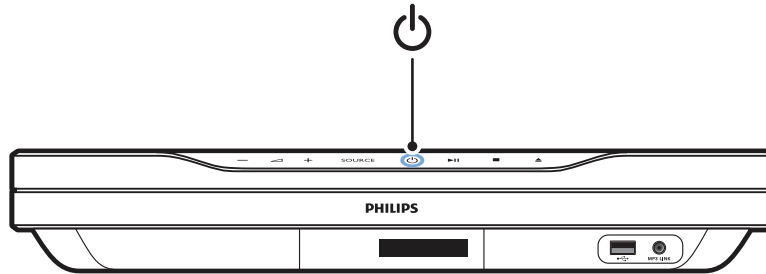
Speaker Cables

1

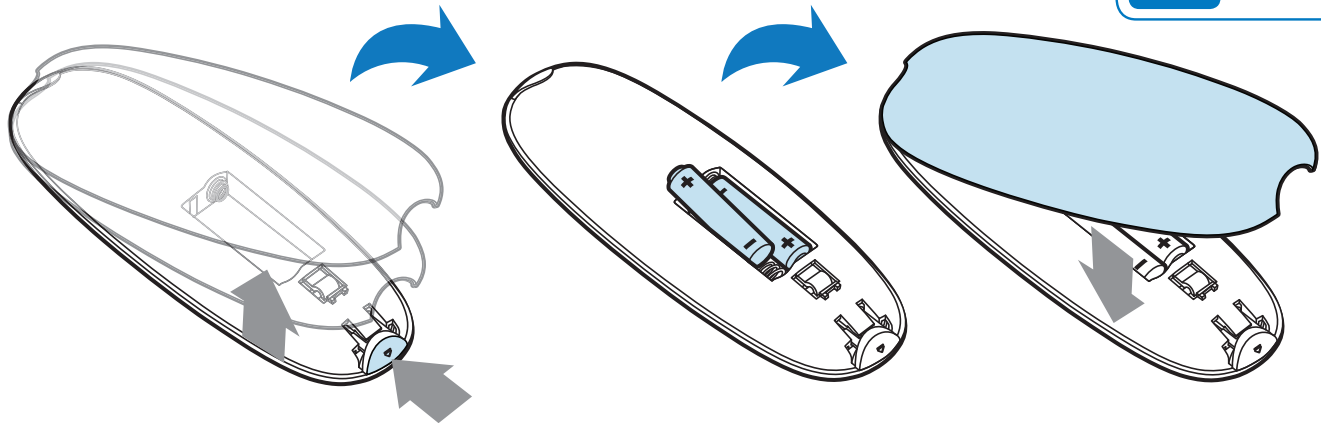




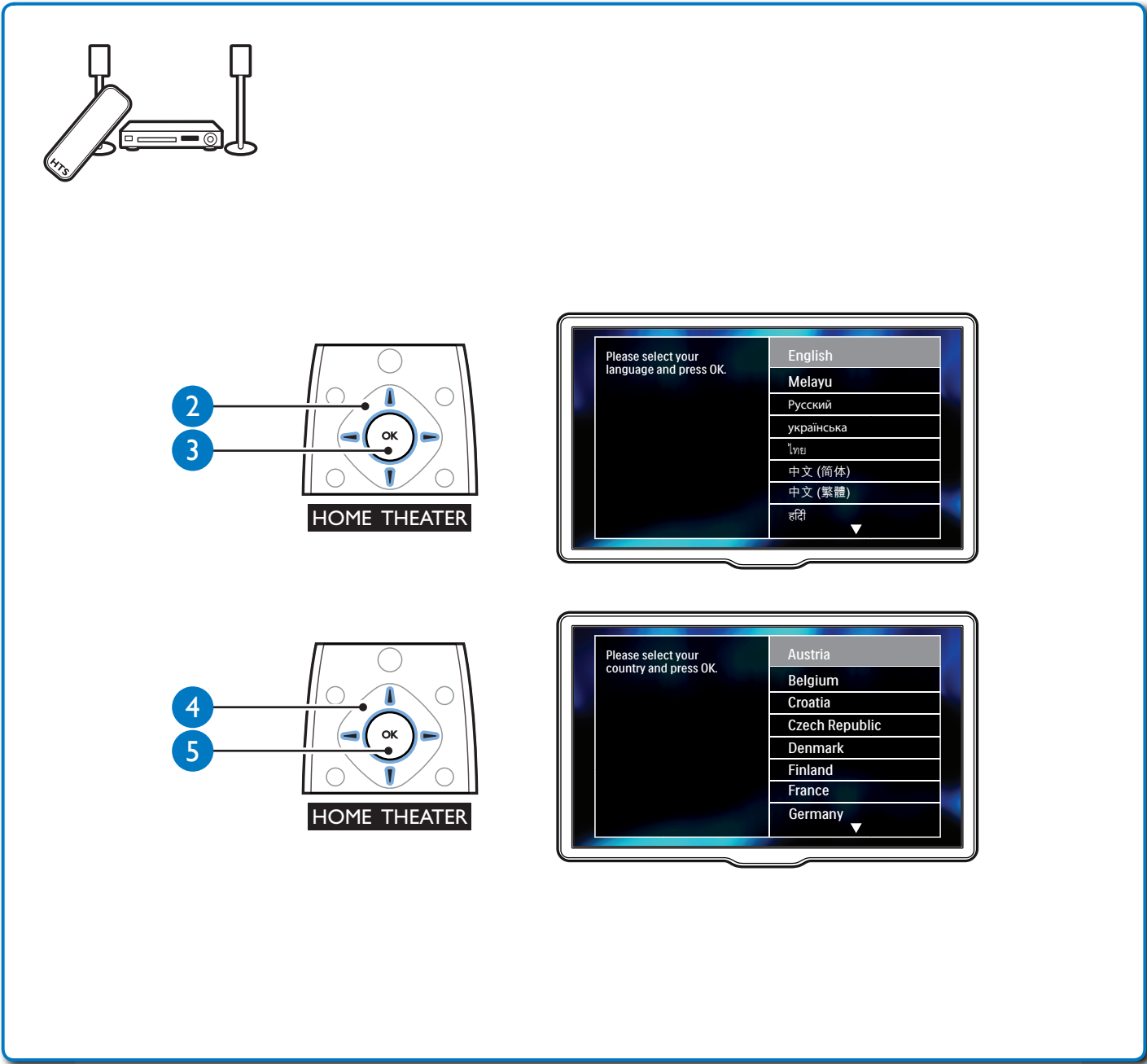
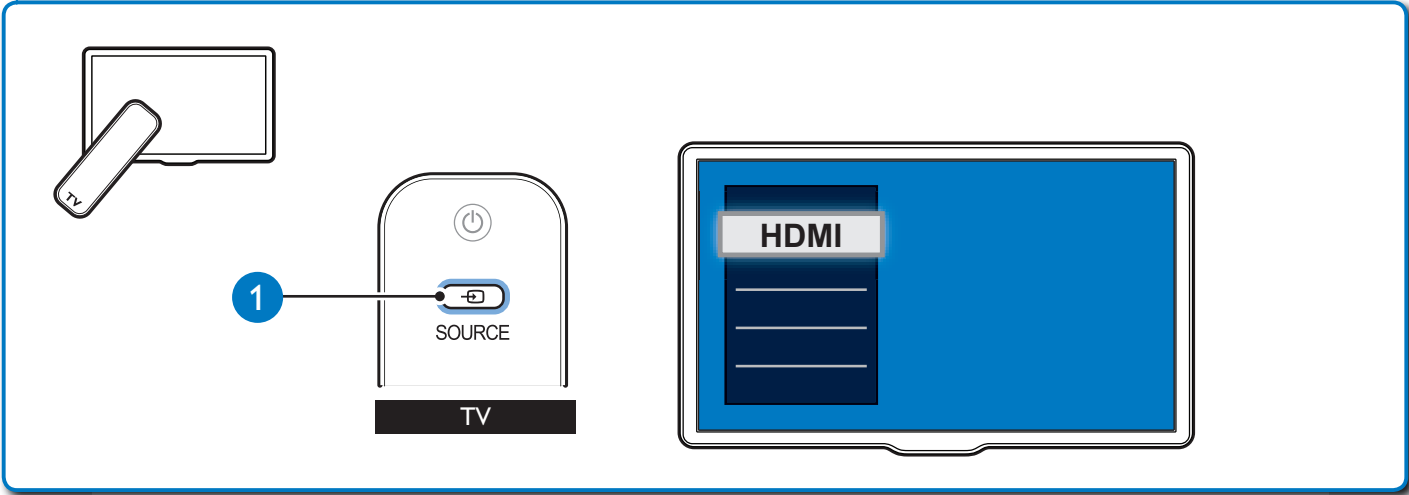
6



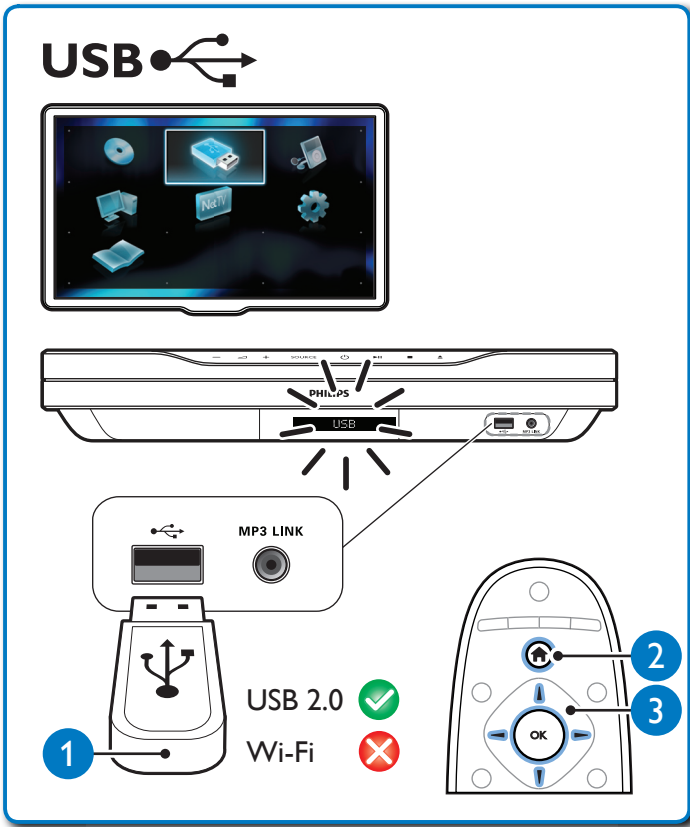
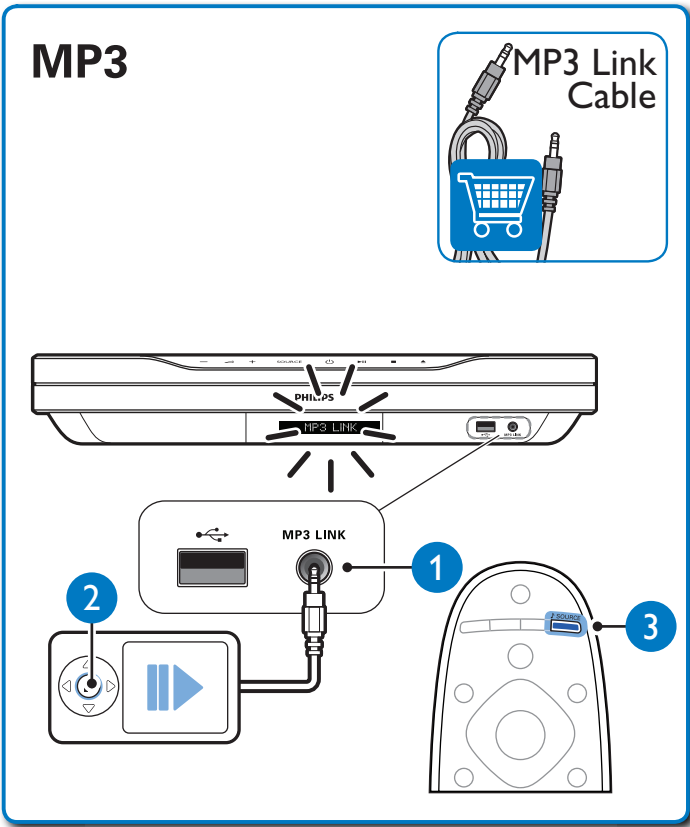
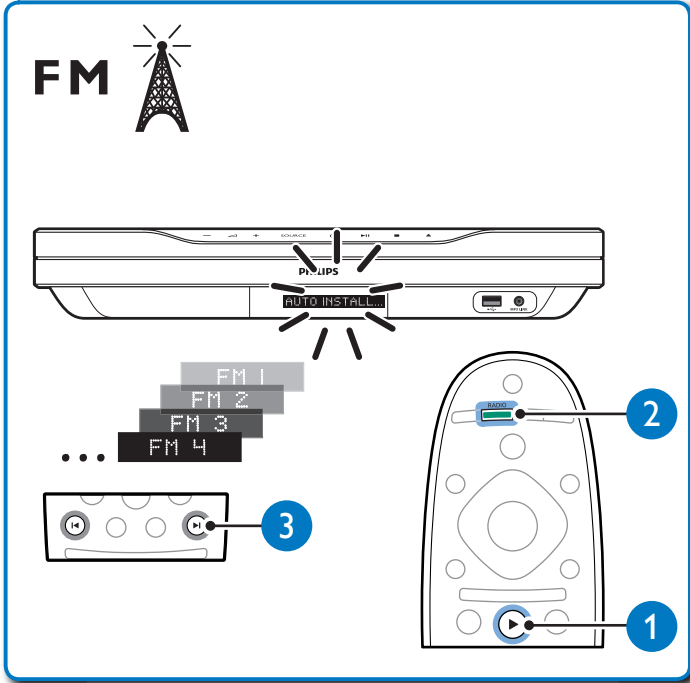
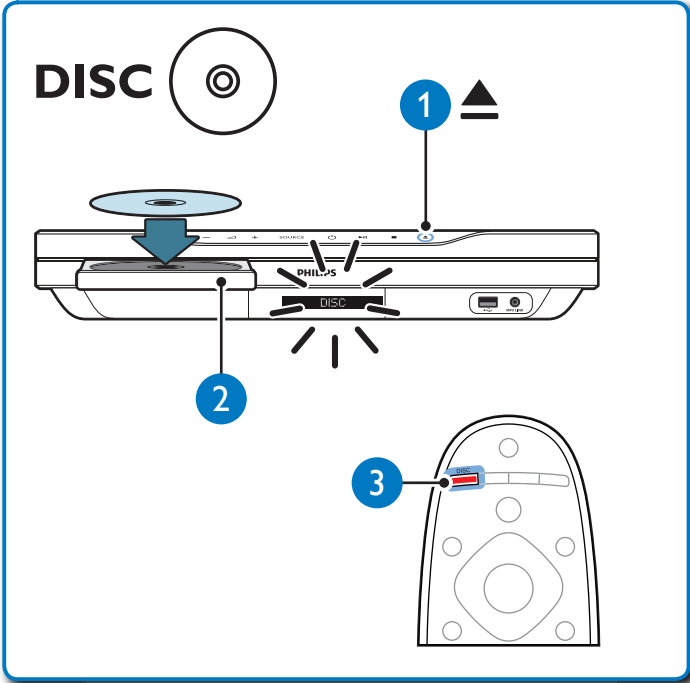
7



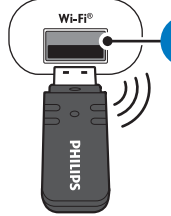
2



3



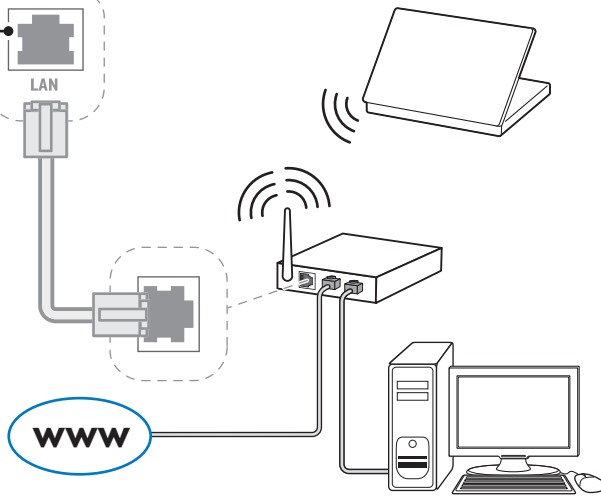
Browse PC / NetTV



Philips WUB1110

USB 2.0 ❌

Wi-Fi ✅



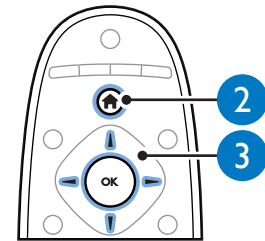
Wireless USB adapter



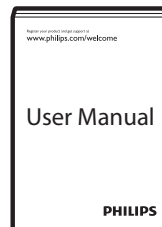
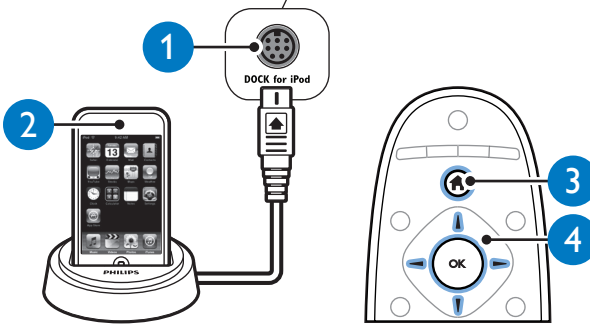
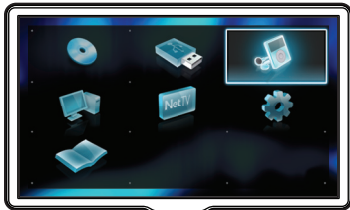
Philips WUB1110

OR

Network Cable



iPod / iPhone



www.philips.com/support

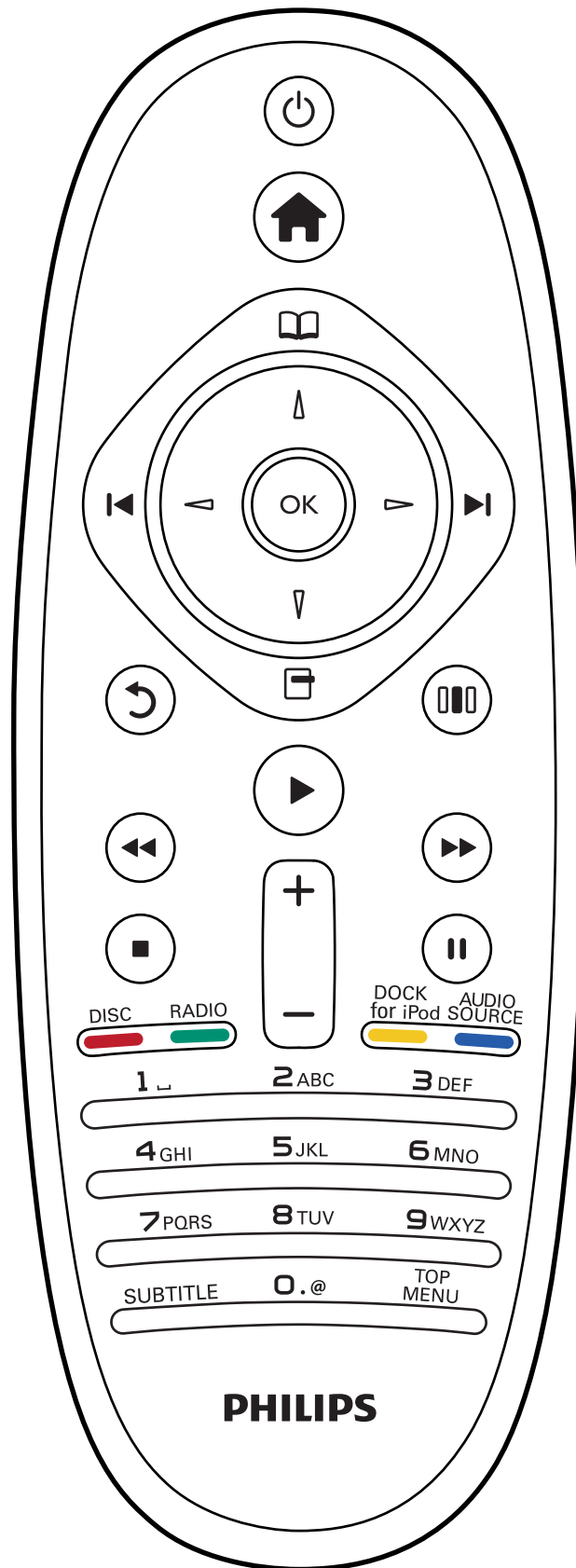


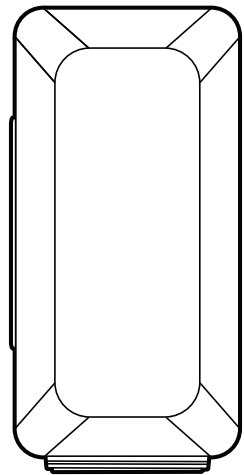
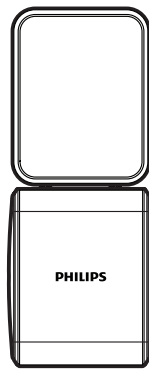
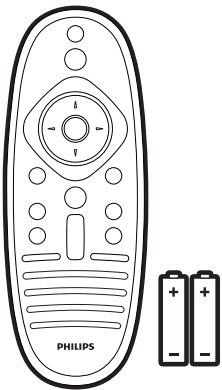
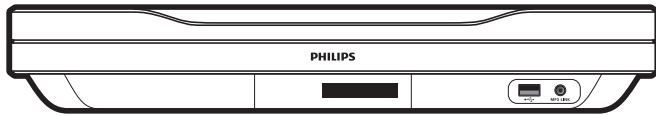
Specifications are subject to change without notice
 Trademarks are the property of Koninklijke Philips Electronics N.V.
 or their respective owners
 2010 © Koninklijke Philips Electronics N.V. All rights reserved.
 sgythy_1050/98_v4

Be responsible
 Respect copyrights

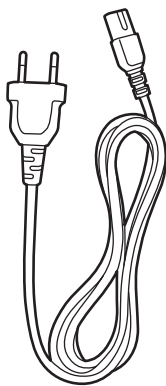
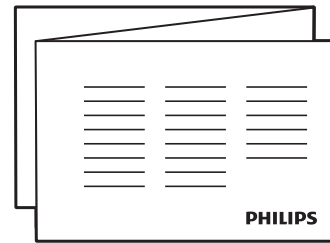
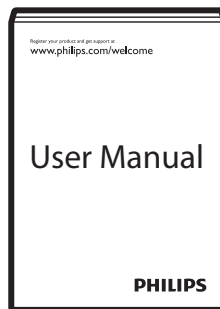


B

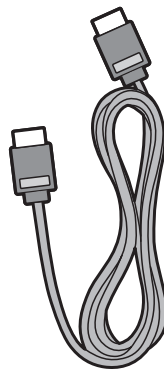




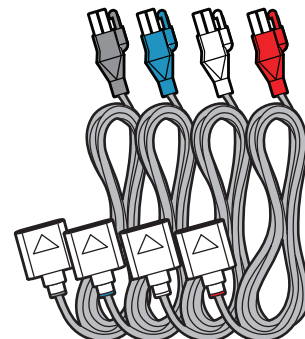
FM Antenna



Power Cord

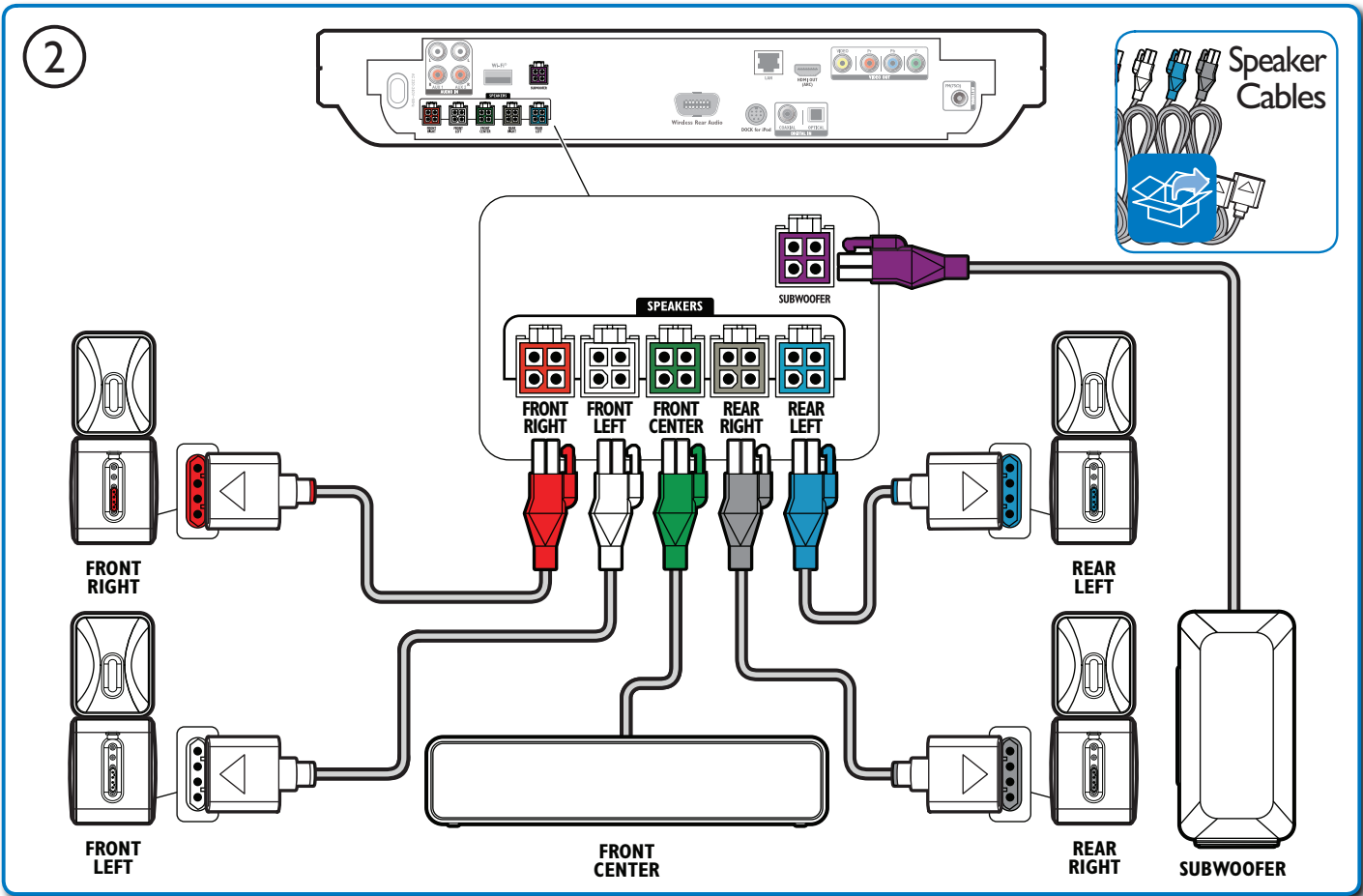
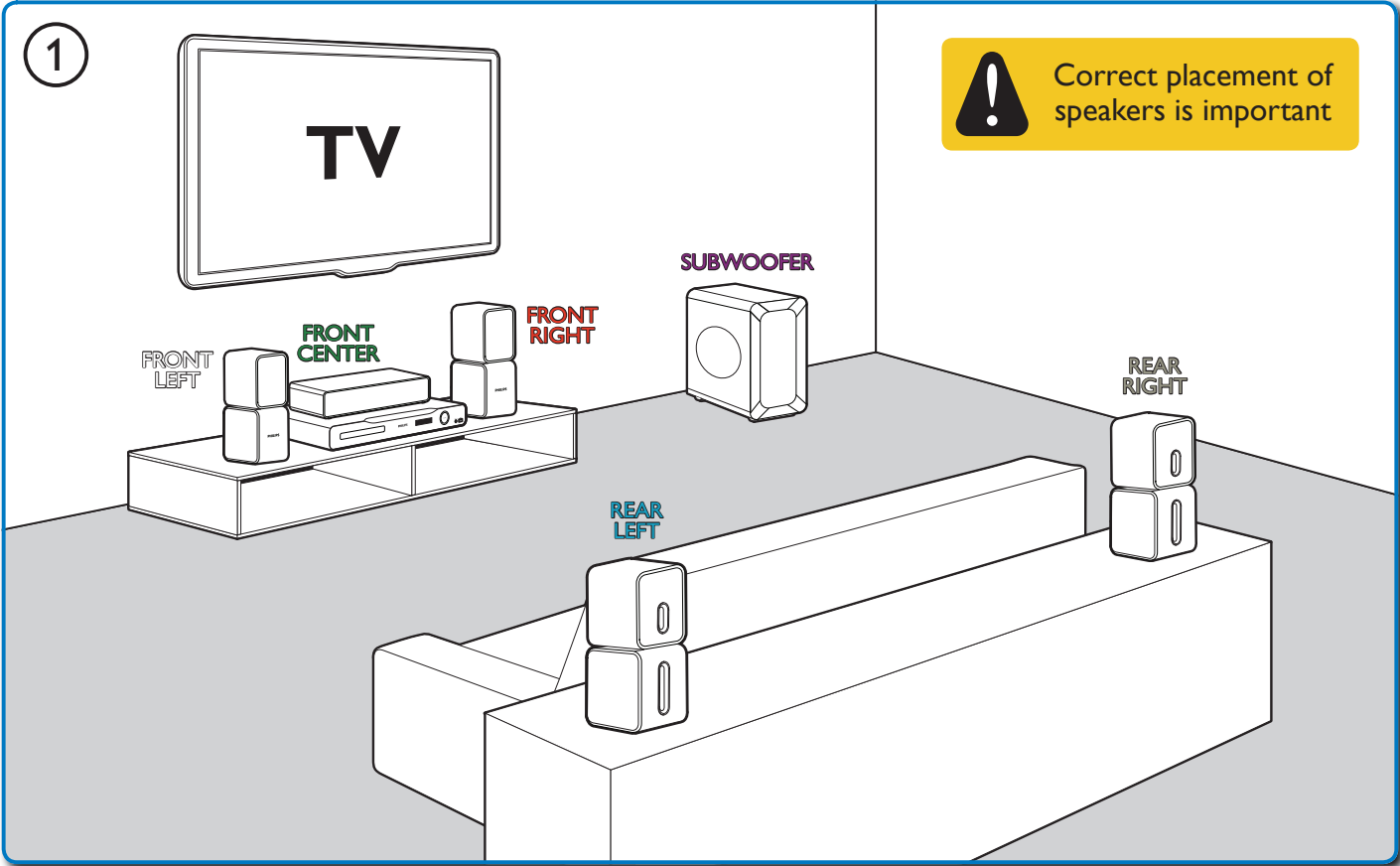


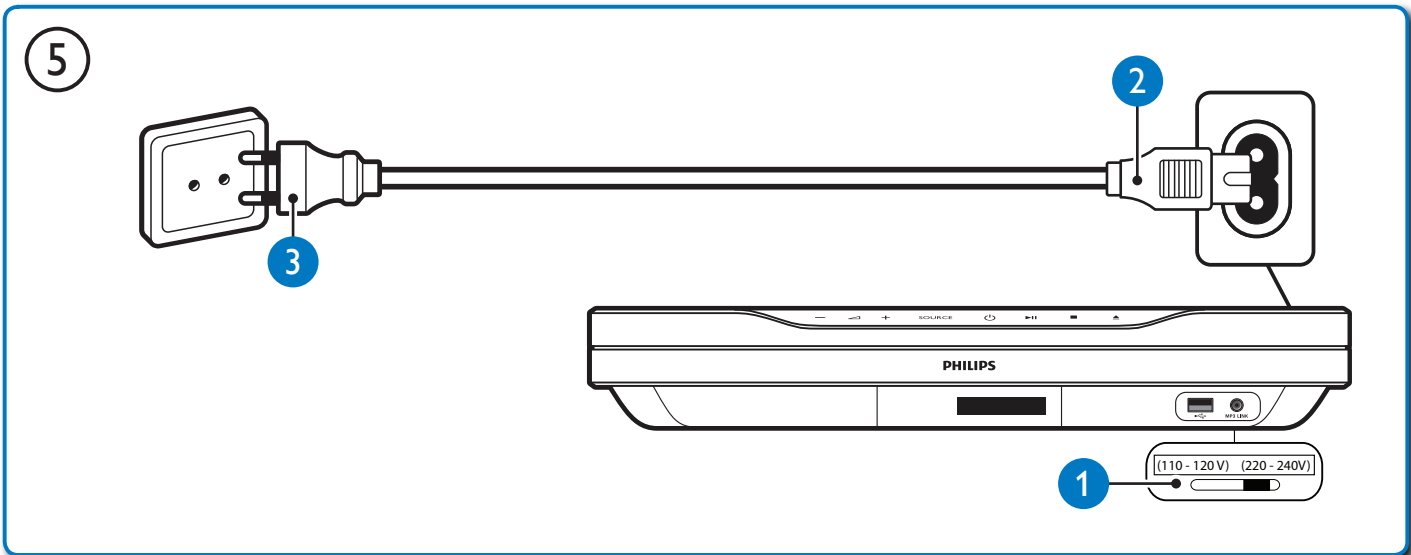
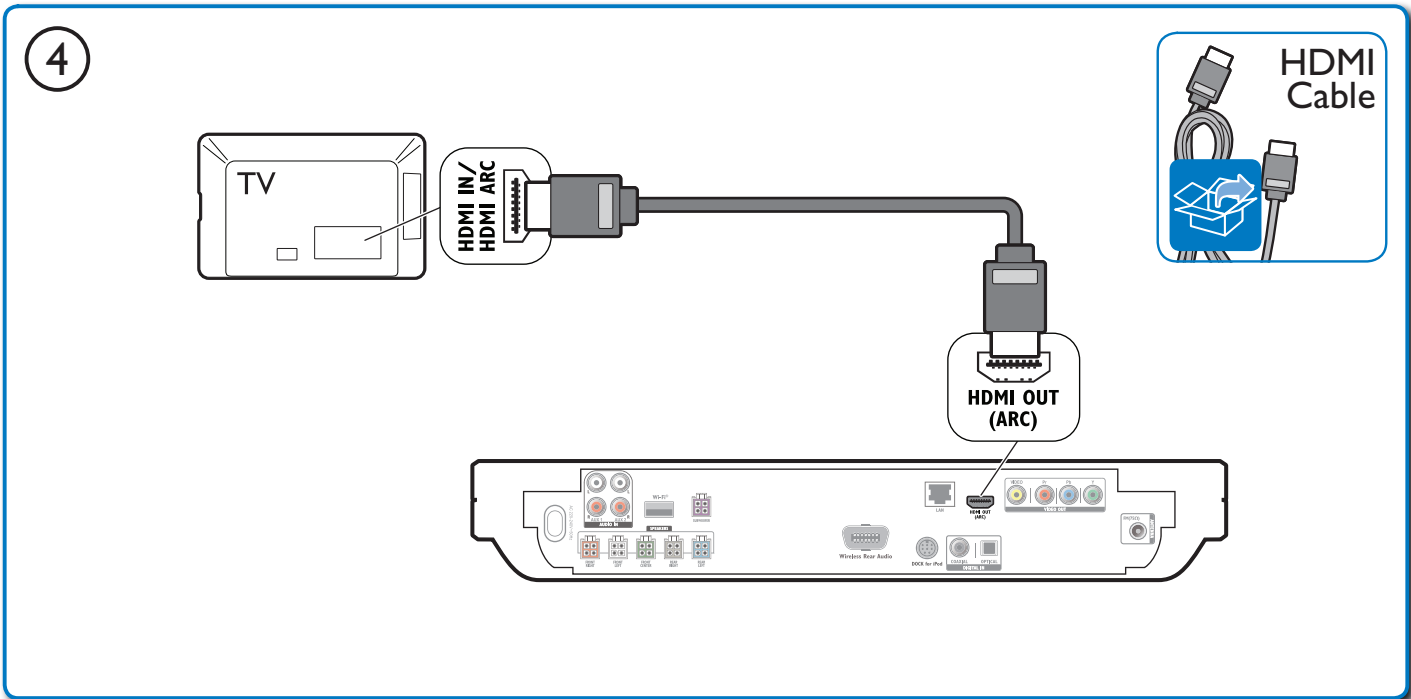
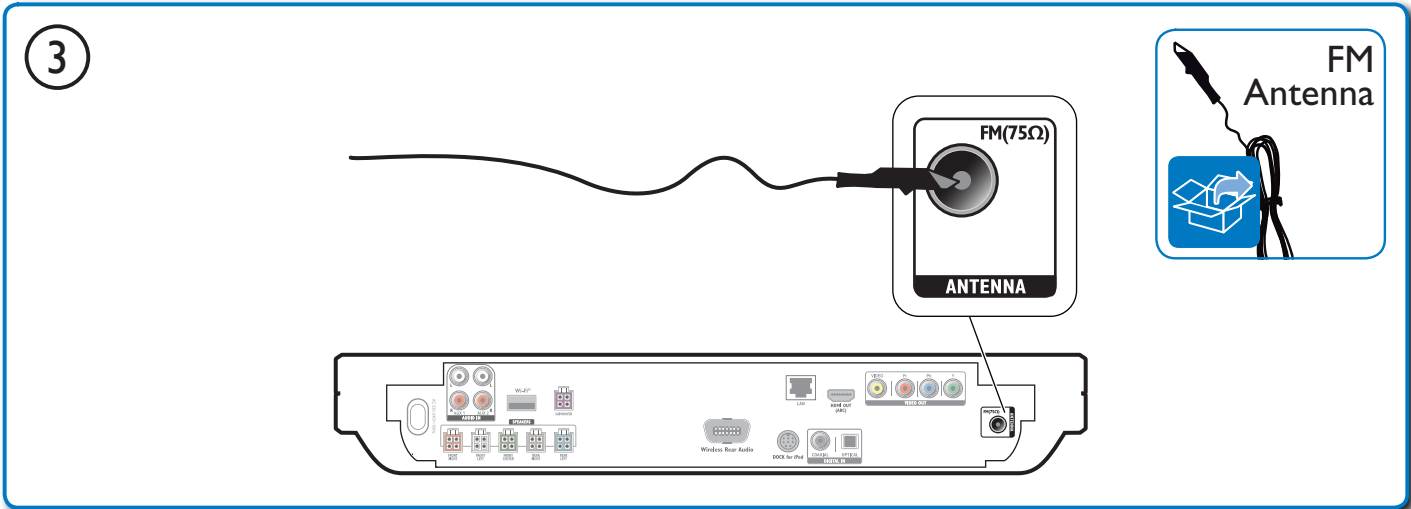
HDMI



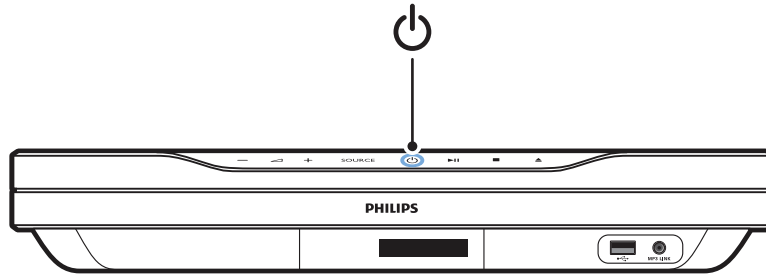
Speaker Cables

1

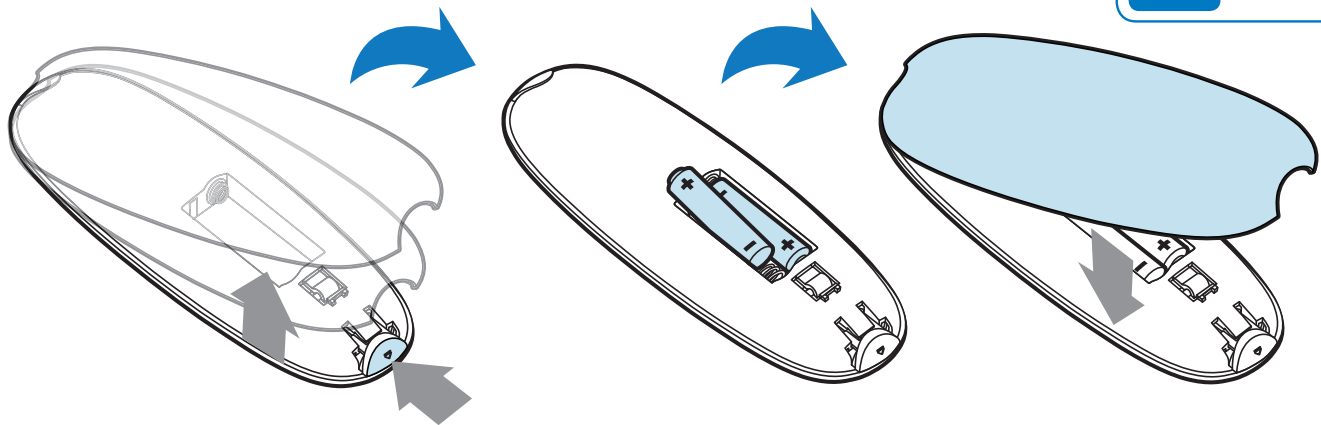




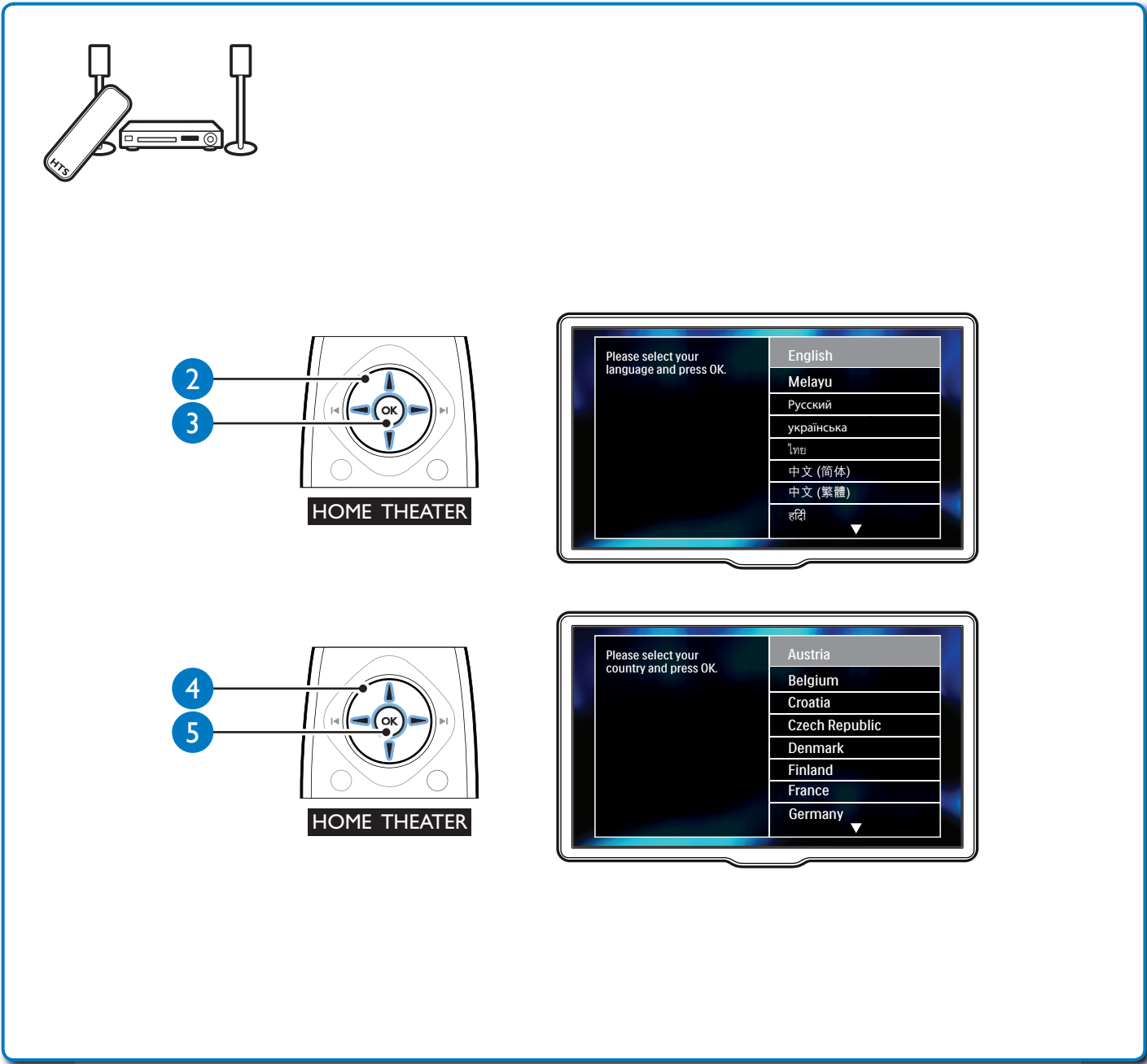
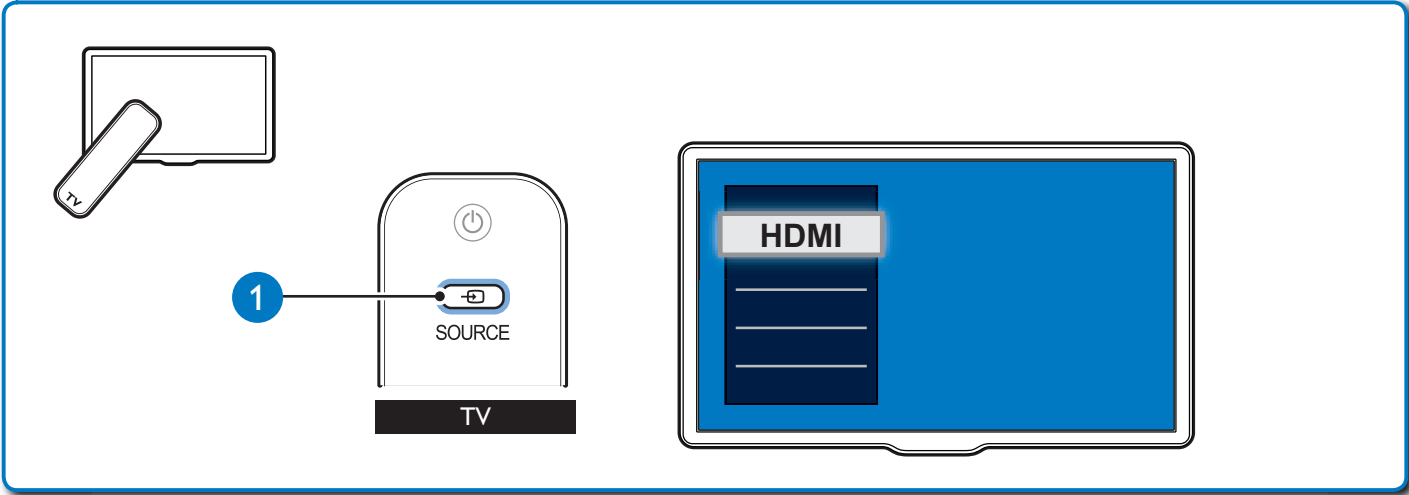
6



7

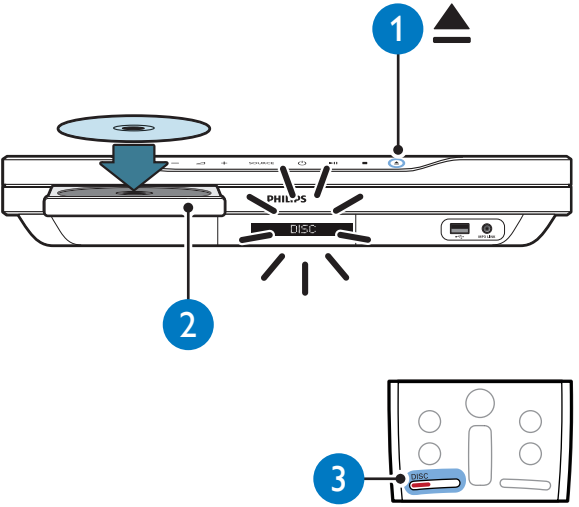


2



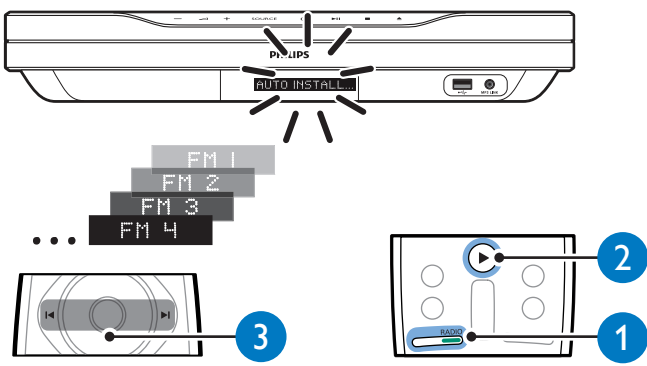
3

DISC



1. Press disc down
2. Disc is loaded
3. Disc tray is closed

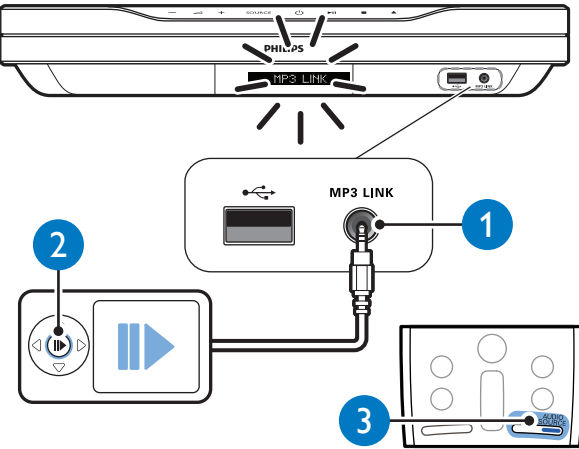
FM



1. Press 'AUTO INSTALL' button
2. Station list appears on screen
3. Select a station on the tuner

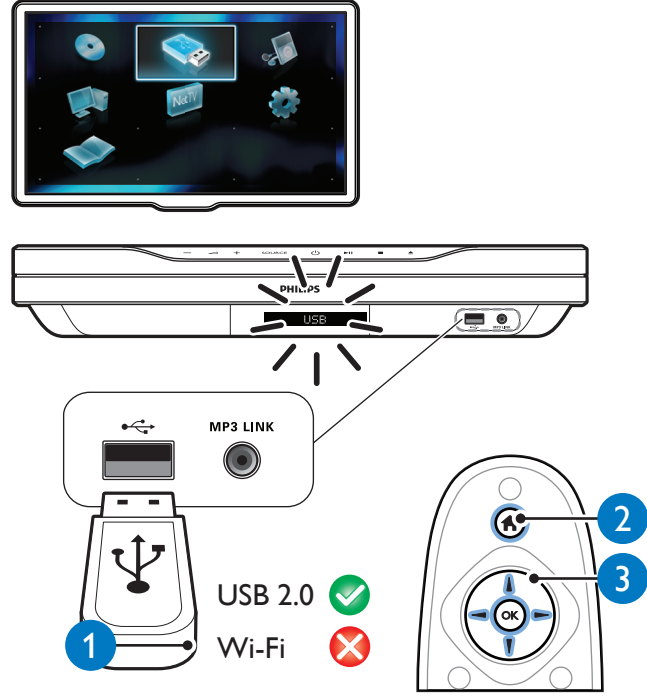
▶

MP3





1. Connect MP3 Link cable to the MP3 LINK port on the device
2. Connect the other end to an MP3 player
3. Press play on the MP3 player

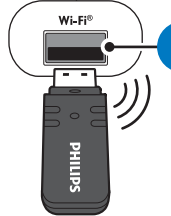
USB



1. Connect USB device to the USB port
2. Press the OK button on the remote control
3. Select the device on the screen

USB 2.0 
 Wi-Fi 

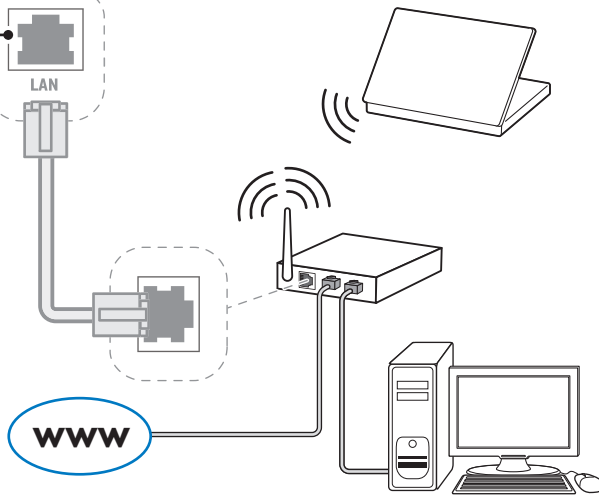
Browse PC / NetTV



Philips WUB110

USB 2.0 ❌

Wi-Fi ✅

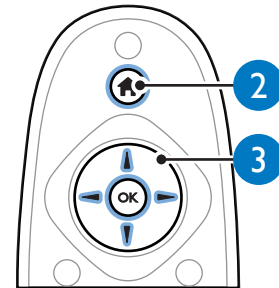


Wireless USB adapter

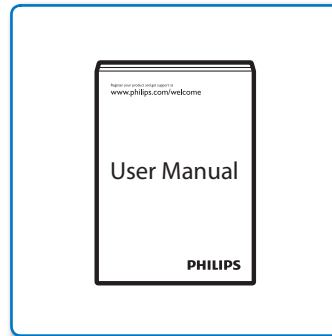
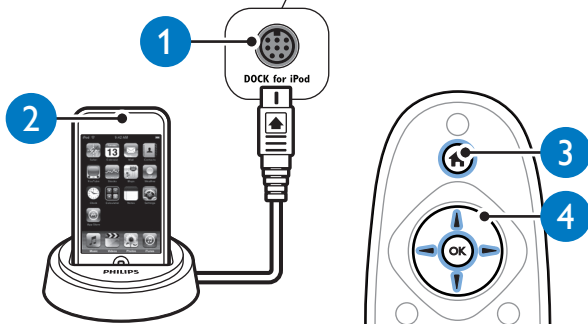
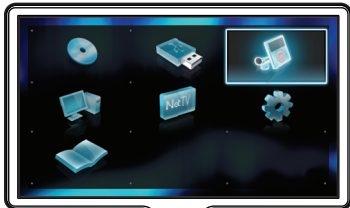


Philips WUB110

OR



iPod / iPhone



Specifications are subject to change without notice
 Trademarks are the property of Koninklijke Philips Electronics N.V.
 or their respective owners
 2010 © Koninklijke Philips Electronics N.V. All rights reserved.
 sgythy_1025/98_v3

Be responsible
 Respect copyrights

