



Quick start guide

SE171

PHILIPS

What's in the box



Handset*



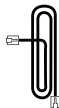
Base station (SE171)



Charger*



Power adapter*



Line cord**



User manual
Quick start guide
Guarantee

Note

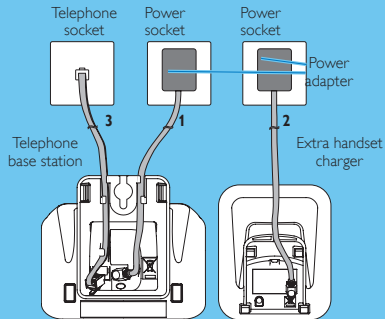
- * In multi-handset packs, there are additional handsets, chargers and power adapters.
- ** In some countries, you have to connect the line adapter to the line cord, then plug the line cord to the telephone socket.

Caution

- Use only the supplied batteries and power adapter.

1 Connect

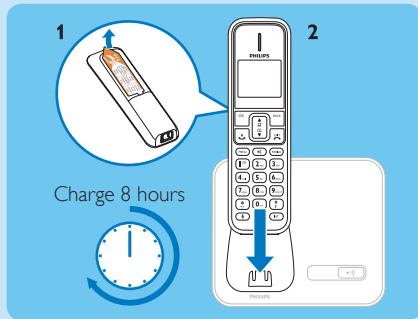
Connect the base station



- 1 Connect each end of the power adapter to:
 - the DC input jack at the bottom of the base station;
 - the power socket on the wall.
- 2 Connect each end of the power adapter to (for multi-handset packs):
 - the DC input jack at the bottom of the extra handset charger;
 - the power socket on the wall.
- 3 Connect each end of the line cord to:
 - the telephone socket at the bottom of the base station;
 - the telephone socket on the wall.

2 Install

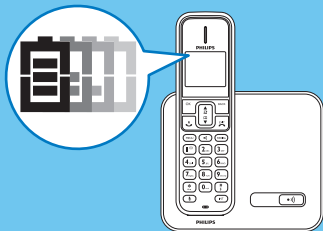
Install the handset



- 1 The batteries are pre-installed in the handset. Pull the battery tape off from the battery door before charging.
- 2 Place the handset on the base station to charge the handset. When the handset is placed correctly on the base station, you hear the docking sound.
↳ The handset starts charging.

Note Charge the batteries for 8 hours before first use.

Check the battery level



When the handset is off the base station/charger, the bars indicate the battery level (full, medium and low). When the handset is on the base station/charger, the bars keep scrolling until charging completes.


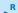



The empty battery icon flashes and you hear an alert tone.


The battery is low and needs recharging.

3 Enjoy

Call

- To make a call, press  and dial the phone number.
- To answer a call, press  when the phone rings.
- To end a call, press .

Adjust the earpiece volume

Press  or  to adjust the volume during a call.

Add a contact in the phonebook

- 1 Press **MENU**.
- 2 Select **[PHONEBOOK]** > **[NEW ENTRY]**, then press **OK** to confirm.
- 3 Enter the name then press **OK** to confirm.
- 4 Enter the number, then press **OK** to confirm.

Welcome to Philips

Register your product at
www.philips.com/welcome

Need help?

User manual

Refer to the user manual that came with your new phone.

Online help

www.philips.com/support



Reproduction in whole or in part is prohibited without the written consent of the copyright owner. Trademarks are the property of Koninklijke Philips Electronics N.V. or their respective owners. © 2010 Koninklijke Philips Electronics N.V. All rights reserved.

CE 0168



Printed in China

QSG_SE171_90_EN_V1.0
WK10254