

Register your product and get support at

www.philips.com/welcome

AJ310



EN User manual

PHILIPS

Contents

1	Important	3
<hr/>		
2	Your Alarm Clock	4
	What's in the box	4
<hr/>		
3	Get started	4
	Connect power	4
	Set clock	5
<hr/>		
4	Set alarm	6
	Select alarm source	6
	Set alarm for wake-up	6
	Set alarm for sleep	7
<hr/>		
5	Other features	8
	Select system language	8
	Announce current time	8
	Guess time	8
	Adjust display brightness	9
<hr/>		
6	Product information	9
	Specifications	9
<hr/>		
7	Troubleshooting	10
<hr/>		
8	Notice	10

1 Important

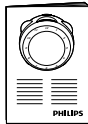
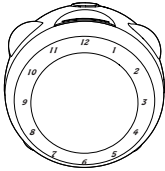
the disconnect device shall remain readily operable.

- Read these instructions.
- Heed all warnings.
- Follow all instructions.
- Do not install near any heat sources such as radiators, heat registers, stoves, or other apparatus (including amplifiers) that produce heat.
- Protect the power cord from being walked on or pinched, particularly at plugs, convenience receptacles, and the point where they exit from the alarm clock.
- Only use attachments/accessories specified by the manufacturer.
- Unplug this alarm clock during lightning storms or when unused for long periods of time.
- Refer all servicing to qualified service personnel. Servicing is required when the alarm clock has been damaged in any way, such as power-supply cord or plug is damaged, liquid has been spilled or objects have fallen into the alarm clock, the alarm clock has been exposed to rain or moisture, does not operate normally, or has been dropped.
- Battery usage **CAUTION** – To prevent battery leakage which may result in bodily injury, property damage, or damage to the alarm clock:
 - Install all batteries correctly, + and - as marked on the alarm clock.
 - Do not mix batteries (old and new or carbon and alkaline, etc.).
 - Remove batteries when the alarm clock is not used for a long time.
- This alarm clock shall not be exposed to dripping or splashing.
- Do not place any sources of danger on the alarm clock (e.g. liquid filled objects, lighted candles).
- Where the plug of the Direct Plug-in Adapter is used as the disconnect device,

2 Your Alarm Clock

What's in the box

Check and identify the contents of your package.



3 Get started

Always follow the instructions in this chapter in sequence.

Connect power

Either AC power or batteries can be used as power supply of this alarm clock.

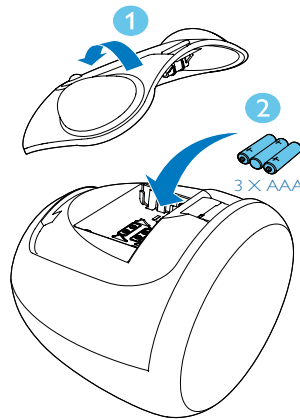
Option 1: Battery power



Caution

- Risk of explosion! Keep batteries away from heat, sunshine or fire. Never discard batteries in fire.
- The batteries contain chemical substances, so they should be disposed of properly.

Insert 3 x AAA batteries with correct polarity (+/-) as illustrated.



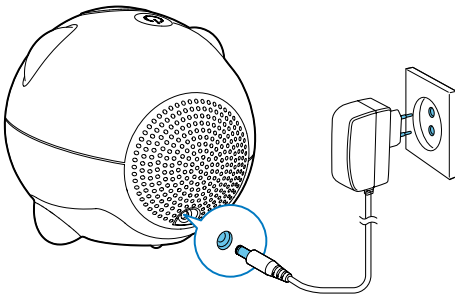
Option 2: AC power

! Caution

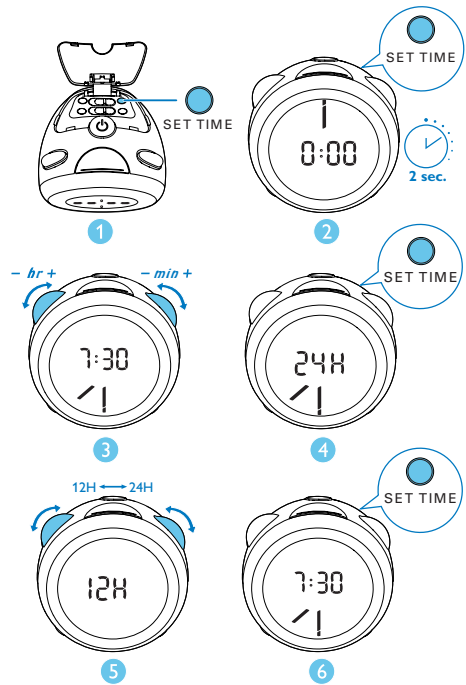
- Risk of product damage! Ensure that the power voltage corresponds to the voltage printed on the back or underside of the alarm clock.
- Risk of electric shock! When you unplug the AC adapter, always pull the plug from the socket. Never pull the cord.

≡ Note

- The type plate is located inside the battery compartment.



- 5 Rotate **- hr +** or **- min +** to adjust the 12/24 hour format.
- 6 Press **SET TIME** to confirm.
↳ The set time is displayed.



Set clock

≡ Note

- Before start, open the protective cover on the top to expose the hidden buttons.

- 1 In standby mode, press and hold **SET TIME** for 2 seconds to activate clock setting mode.
↳ The hour and minute digits link.
- 2 Rotate **- hr +** to adjust the hour.
- 3 Rotate **- min +** to adjust the minute.
- 4 Press **SET TIME** to confirm.
↳ **[24H]** begins to blink.

4 Set alarm

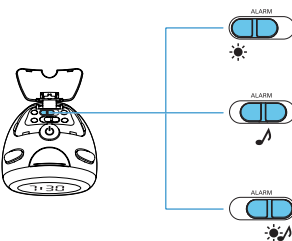
Select alarm source

Adjust ☀ / 🎵 / ☀🎵 to select different alarm sources:

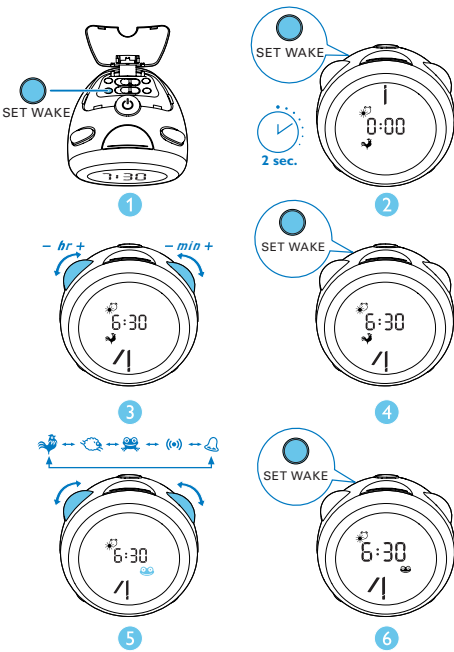
- ☀ : backlight is activated when alarm time comes.
- 🎵 : the selected sound is activated when alarm time comes.
- ☀🎵 : both backlight and sound are activated when alarm time comes..

Tip

- You can select the alarm sound when setting the alarm for wake-up or sleep.
- The alarm volume cannot be adjusted manually.



- 3 Rotate - min + to adjust the minute.
- 4 Press **SET WAKE** to confirm.
↳ The sound source blinks.
- 5 Rotate - hr + or - min + to select an alarm sound.
- 6 Press **SET WAKE** to confirm.
↳ The alarm settings are displayed.



Set alarm for wake-up

With this alarm clock, you can set an alarm to wake you up in the morning.

Note

- Make sure that you have set the clock correctly.

- 1 In standby mode, press and hold **SET WAKE** for two seconds.
↳ The hour and minute digits blink.
- 2 Rotate - hr + to adjust the hour.

Tip

- When alarm sounds, volume rises gradually.

When alarm time comes:

Power Supply	Alarm Duration	Backlight (if selected)
AC power	Max. 15 minutes	In green for 15 minutes
Battery power	Max. 5 minutes	In green for 1 minute

Activate/deactivate the alarm for wake-up

- 1 In standby mode, press **SET WAKE**.
↳ The preset alarm settings are displayed.
- 2 Press **SET WAKE** repeatedly to activate or deactivate the alarm for wake-up.
↳ The alarm icon appears if the alarm is on and disappears if it is off.
 - To stop the ringing alarm, press **SET WAKE** or **alarm off/tell time**.↳ The alarm repeats ringing for the next day.

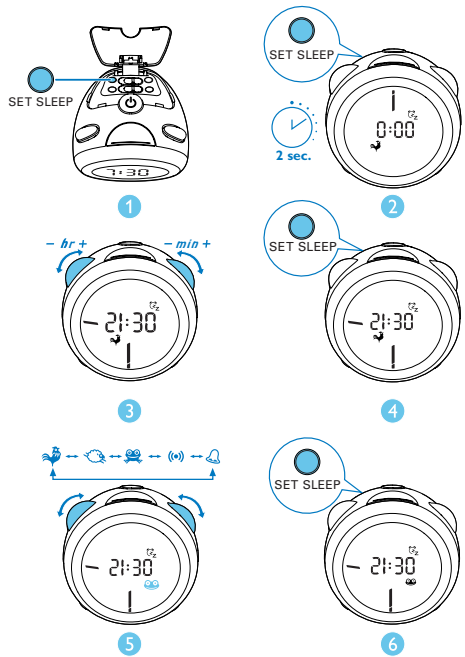
Set alarm for sleep

You can also set an alarm to remind you to sleep on time at night.

Note

- Make sure that the clock is set correctly.

- 1 In standby mode, press and hold **SET SLEEP** for two seconds.
↳ The hour and minute digits blink.
- 2 Rotate **- hr +** to adjust the hour.
- 3 Rotate **- min +** to adjust the minute.
- 4 Press **SET SLEEP** to confirm.
↳ The sound source blinks.
- 5 Rotate **- hr +** or **- min +** to select an alarm sound.
- 6 Press **SET SLEEP** to confirm.
↳ The alarm settings are displayed.



When alarm time comes:

Power Supply	Alarm Duration	Backlight (if selected)
AC power	Max. 15 minutes	In red for 15 minutes
Battery power	Max. 5 minutes	In red for 1 minute

Activate/deactivate the alarm for sleep

- 1 In standby mode, press **SET SLEEP**.
↳ The preset alarm settings are displayed.
- 2 Press **SET SLEEP** repeatedly to activate or deactivate the alarm for sleep.
↳ The alarm icon appears if the alarm is on and disappears if it is off.
 - To stop the ringing alarm, press **SET SLEEP** or **alarm off/tell time**.↳ The alarm repeats ringing for the next day.

5 Other features

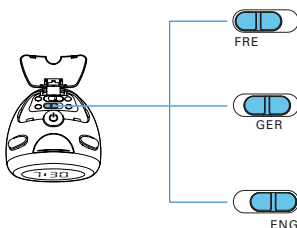
Select system language



Note

- Three languages are available for this alarm clock.

Adjust **FRE/GER/ENG** to select French, German, or English as your system language.



Announce current time

This talking alarm clock can announce the current time in a natural way when activated.

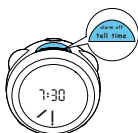


Note

- Make sure that you have selected the correct language.

In standby mode, press **alarm off/tell time**.

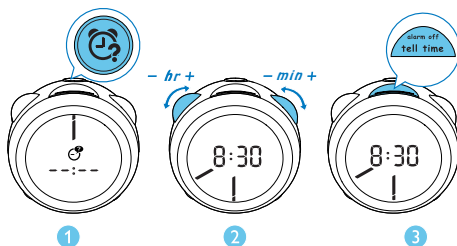
- ↳ You will hear the current time clearly (e.g. it's five o'clock).



Guess time

This alarm clock is also designed to help a child learn to tell time. By asking children questions such as "What time is it", this alarm clock helps children become accustomed to using clocks. As a result, it contributes to their intellectual growth.

- 1 Press .
↳ [- : - : -] is displayed.
↳ The alarm clock asks you "what time is it".
- 2 By referring to the clock's hour hand and minute hand, rotate - hr + and - min + to adjust time.
- 3 Press **alarm off/tell time**.
↳ If you have adjusted time correctly, you will hear an applause sound, and then the alarm clock announces the time.
↳ If your answer is wrong, you will hear a bad sound, and then the alarm clock tells you the correct time.
- 4 To exit, press again.



Tip

- Kids can press **alarm off/tell time** to get the correct answer directly, without adjusting the clock settings.

Adjust display brightness

Press **BACKLIGHT** repeatedly to select different brightness levels:

- High brightness
- Low brightness
- Brightness off

6 Product information



Note

- Product information is subject to change without prior notice.

Specifications

Amplifier

Rated Output Power	0.25 W RMS
--------------------	------------

General information

Power supply	
- AC Power	Model : AC39735T (Philips); Input : 220-230V ~, 50Hz, 20mA;
- Battery	3 x 1.5V R03/UM-4
Operation Power Consumption	
	2 W
Standby Power Consumption	
	<1 W
Dimensions	
- Main Unit (W x H x D)	110 x 110 x 110 mm
Weight	
- With Packing	0.63 kg
- Main Unit	0.29 kg

7 Troubleshooting



Warning

- Never remove the casing of this device.

To keep the warranty valid, never try to repair the system yourself.

If you encounter problems when using this device, check the following points before requesting service. If the problem remains unsolved, go to the Philips Web page (www.philips.com/support). When you contact Philips, make sure that the device is nearby and the model number and serial number are available.

No power

- Ensure that the power plug is connected properly.
- Ensure that there is power at the AC Mains.
- Ensure that the batteries are inserted correctly.

No response from the unit

- Take out the batteries and turn on the unit again.
- Disconnect and reconnect the AC power plug, then turn on the unit again.

Alarm does not work

- Set the clock/alarm correctly.

8 Notice

Any changes or modifications made to this device that are not expressly approved by WOOX Innovations may void the user's authority to operate the equipment.



This product complies with the radio interference requirements of the European Community.



Your product is designed and manufactured with high quality materials and components, which can be recycled and reused.



When this crossed-out wheeled bin symbol is attached to a product it means that the product is covered by the European Directive 2002/96/EC.

Please inform yourself about the local separate collection system for electrical and electronic products.

Please act according to your local rules and do not dispose of your old products with your normal household waste. Correct disposal of your old product helps to prevent potential negative consequences for the environment and human health.



Your product contains batteries covered by the European Directive 2006/66/EC, which cannot be disposed with normal household waste. Please inform yourself about the local rules on separate collection of batteries because

correct disposal helps to prevent negative consequences for the environmental and human health.

Environmental information

All unnecessary packaging has been omitted. We have tried to make the packaging easy to separate into three materials: cardboard (box), polystyrene foam (buffer) and polyethylene (bags, protective foam sheet.)

Your system consists of materials which can be recycled and reused if disassembled by a specialized company. Please observe the local regulations regarding the disposal of packaging materials, exhausted batteries and old equipment.



This is CLASS II apparatus with double insulation, and no protective earth provided.



Specifications are subject to change without notice.
2014 © WOOX Innovations Limited. All rights reserved.
Philips and the Philips' Shield Emblem are registered
trademarks of Koninklijke Philips N.V. and are used by WOOX
Innovations Limited under license from Koninklijke Philips N.V.

