

Always there to help you

Register your product and get support at
www.philips.com/welcome

DVP3680K



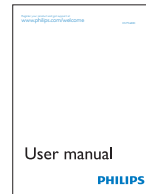
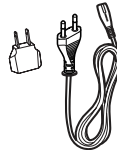
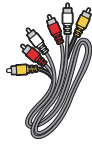
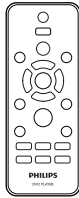
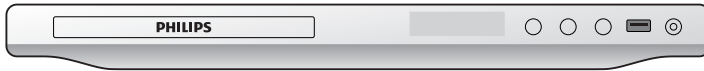
User manual

PHILIPS

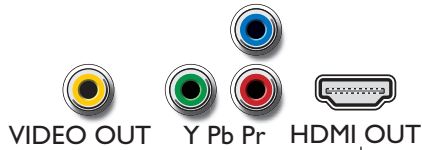


EN

Before you connect this DVD player, read and understand all accompanying instructions.



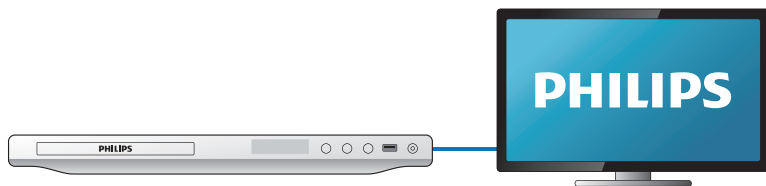
1



COAXIAL AUDIO OUT



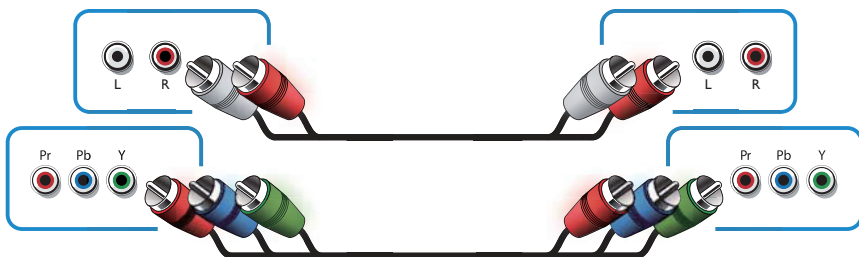
2



HDMI OUT



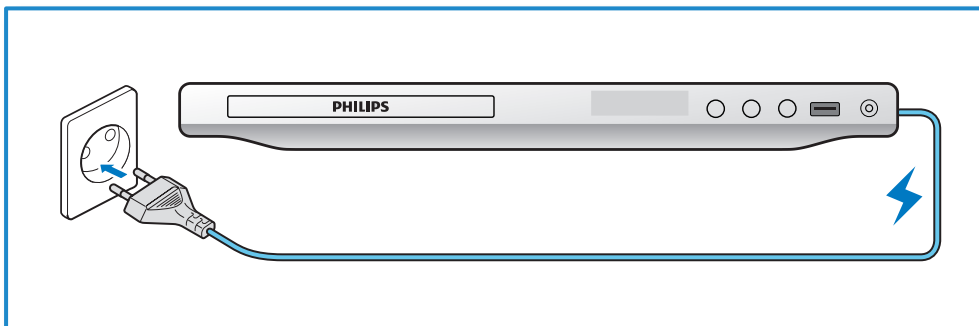
Pr PbY + AUDIO OUT



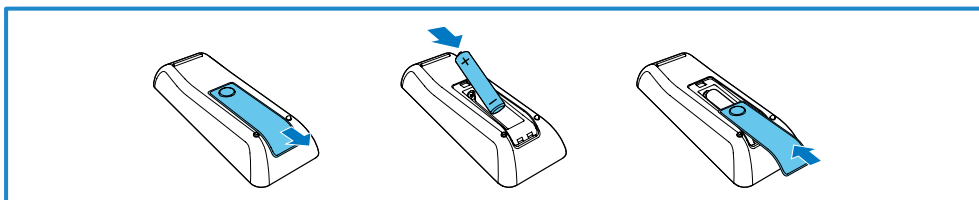
VIDEO OUT + AUDIO OUT



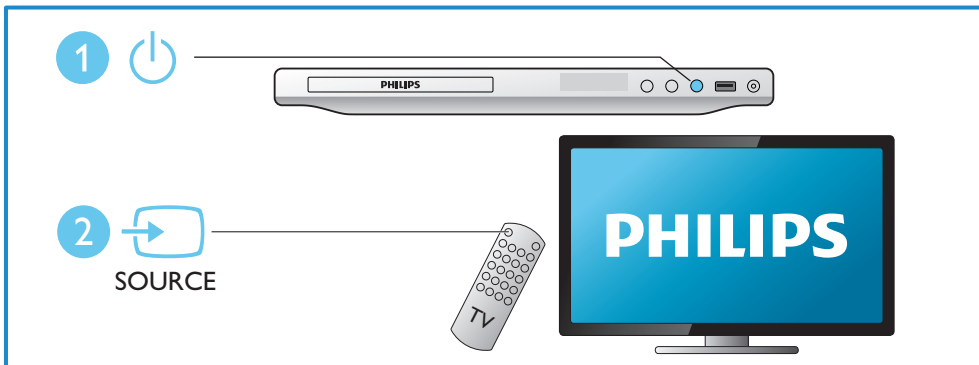
3

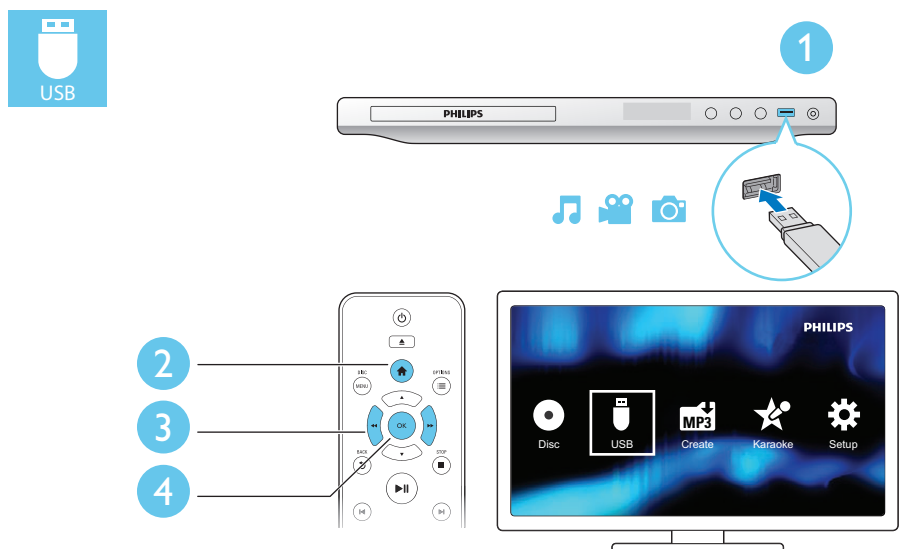
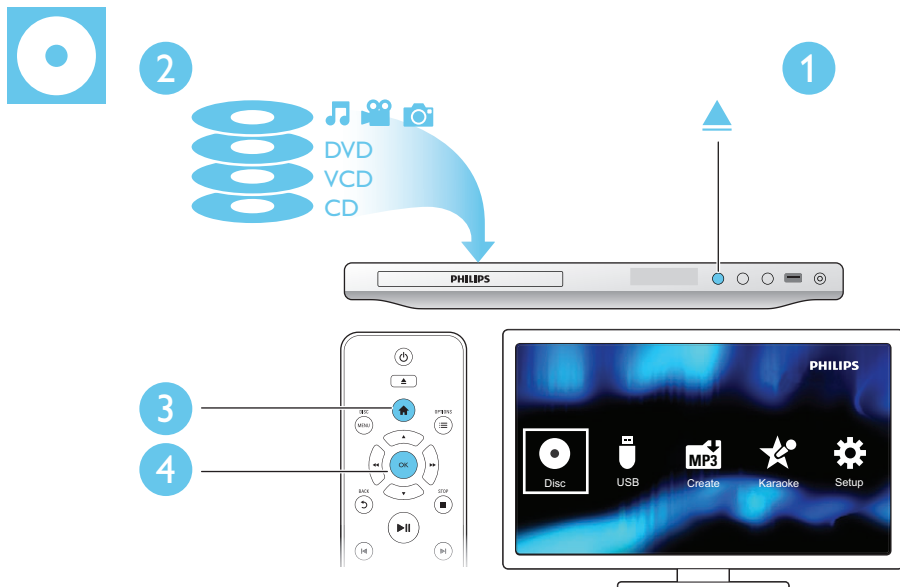


4



5





Contents

1	Hookup and play	2-6
----------	------------------------	------------

2	Use your DVD player	8
	Basic play control	8
	Video options	9
	Play a musical slideshow	9
	Repeat play	9
	Skip play	9
	DivX videos	10
	Record audio files from CD to USB	10
	Karaoke	10
	Use Philips EasyLink	11

3	Change settings	12
	General (sleep, standby...)	12
	Picture	12
	Sound	13
	Preference (languages, parental control...)	13

4	Software update	14
----------	------------------------	-----------

5	Specifications	15
----------	-----------------------	-----------

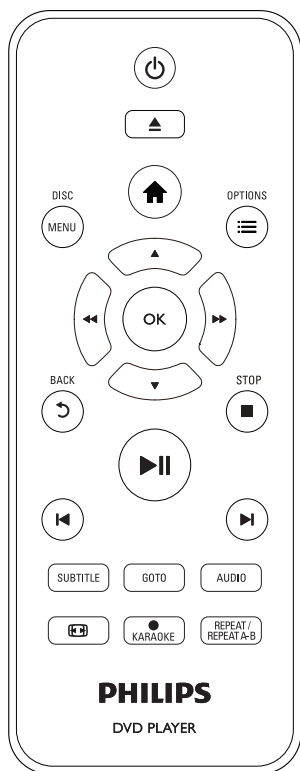
6	Troubleshooting	16
----------	------------------------	-----------

7	Safety and important notice	17
----------	------------------------------------	-----------

2 Use your DVD player

Congratulations on your purchase, and welcome to Philips! To fully benefit from the support that Philips offers, register your product at www.philips.com/welcome.


Basic play control



During play, press the following buttons to control the player:

Button	Action
	Turn on the player, or switch to standby.
	Open or close the disc compartment.
	Access the home menu.
DISC MENU	Access or exit the disc menu.
OPTIONS	Access more options during video play.
	Navigate the menus. Slow forward or backward. Press repeatedly to change a search speed.
	Navigate the menus. Fast forward or backward. Press repeatedly to change a search speed.
OK	Confirm a selection or entry.
BACK	Return to a previous display menu.
STOP	Stop play.
	Start, pause or resume play.
	Skip to the previous or next track, chapter or file.
SUBTITLE	Select a subtitle language.
GOTO	Skip to a title, a chapter or a track.
AUDIO	Select an audio language or channel.
	Fit the picture display to the TV screen. Zoom the picture in or out.
KARAOKE	Record Karaoke onto a USB storage device.
REPEAT/REPEAT A-B	Select a repeat play option.





Video options

During video play, press  **OPTIONS** to access the following options.

- **[Info]**: Display the current play information.
- **[PBC]**: Display or skip the content menu for VCD and SVCD.
- **[Aspect ratio]**: Select a picture display format to fit the TV screen.
- **[Volume]**: Change a volume level.
- **[Angle]**: Select a camera angle from which video is viewed.
- **[Microphone]**: Turn on or off microphone sound output.
- **[Karaoke]**: Change the volume level and echo level of microphone input, and the key level of music.
- **[Vocal]**: Select a Karaoke audio mode, or turn off original vocals.





Play a musical slideshow




Play music and pictures simultaneously to create a musical slideshow.

- 1 From a disc or connected USB storage device, play a music file.
- 2 Press   to navigate to the picture files.
- 3 Select a picture from the same disc or USB, and press **OK** to start slideshow.
- 4 Press  to stop slideshow.
- 5 Press  again to stop music play.

Control photo play

During a photo slideshow, use the remote control to control the play.

Button	Action
 	Rotate a picture horizontally/vertically.
 	Rotate a picture anti-clockwise/clockwise.



	Access to select [Color] to display a picture in color or black and white.
OPTIONS	Access to select [Photo preview] to display pictures in thumbnail.
	Zoom in or out of a photo. Play pauses in zoom mode.
OK	Start or resume a play.
	Stop a play.

Repeat play

During play, press **REPEAT/REPEAT A-B** repeatedly to select a repeat play option.

- Repeat the current title, chapter, or track.
- Repeat all the contents on a disc or a USB storage device.
- Repeat play for a specific section.

To Repeat play for a specific section

- 1 Press **REPEAT/REPEAT A-B** repeatedly to select  **A** as a start point.
- 2 Press **REPEAT/REPEAT A-B** again to select  **AB** as an end point.
 - ↳ The repeat play of the marked section starts.
- 3 To cancel repeat play, press **REPEAT/REPEAT A-B** until **[Off]** is displayed.

Note

- Repeat play of the marked section is only possible within a title or track.

Skip play

You can skip play to a specific title, chapter or track.

- 1 During play, press **GOTO**.
 - ↳ An input field bar is displayed, and "0" blinks.

- 2 Press ▲▼ to select a digit as a title, chapter, or track number.
- 3 After a digit is selected, press ◀▶/▶▶ to change a digit position.
- 4 If necessary, repeat step 2 and 3 to complete the input of a title, chapter, or track number.
- 5 Press **OK**.
 - ➔ The play skips to the selected title, chapter or track.

DivX videos

You can play DivX videos from a disc or a USB storage device.

VOD code for DivX

- Before you purchase DivX videos and play them on this player, go to vod.divx.com to register this player using the DivX VOD code.
- Display the DivX VOD code: press **⬆**, and select **[Setup] > [General] > [DivX(R) VOD Code]**.

DivX subtitles

- Press **SUBTITLE** to select a language.
- If subtitles are not displayed correctly, change the character set that supports DivX subtitles. Select a character set: press **⬆**, and select **[Setup] > [Preference] > [DivX Subtitle]**.

Character set	Languages
[Standard]	English, Albanian, Danish, Dutch, Finnish, French, Gaelic, German, Italian, Kurdish (Latin), Norwegian, Portuguese, Spanish, Swedish and Turkish

Note

- To play DivX DRM protected files from a USB storage device, connect this player to a TV through HDMI.
- To use the subtitles, make sure that the subtitle file has the same name as the DivX video file name. For example, if the DivX video file is named "movie.avi", save the subtitle file as "movie.srt", or "movie.sub".
- This player can play subtitle files in the following formats: .srt, .sub, .txt, .ssa, and .smi.

Record audio files from CD to USB

You can record audio files from an audio CD to a USB storage device. Audio files are recorded in .mp3 format.

- 1 Connect a USB storage device to this player.
- 2 Load a disc, and start disc play.
- 3 Press **⬆**, and select **[Create MP3]**, and then press **OK**.
- 4 Follow the on-screen instructions to complete an recording.
 - ➔ A new folder is automatically created in the USB storage device to store all the recorded MP3 files.

Note

- During recording, do not press any button.
- DTS CDs and copy-protected CDs cannot be converted.
- Write-protected or password-protected USB devices cannot be used to store MP3 files.

Karaoke

- 1 Connect a microphone (not supplied) to the **MIC** connector on this player.
- 2 Press **⬆** to display the home menu.
- 3 Select **[Karaoke]**, and press **OK**.

↳ The Karaoke menu is displayed.

- 4 Select **[Microphone]** > **[On]**, and press **OK** to turn on the microphone sound output.
- 5 Play a disc, and then sing through the microphone.

Set up Karaoke via the Karaoke menu

- **[Microphone]**: Turn on or off microphone sound output.
- **[Mic Volume]**: Change microphone volume.
- **[Echo]**: Change the echo level.
- **[Karaoke Scoring]**: Select a difficulty level to score your singing. After a song ends, a score is given.
- **[Karaoke Idol]**: Have a Karaoke contest with your friends. Follow the on-screen instructions to start the contest.
- **[Key Shift]**: Change the key level of music.
- **[Vocal]**: Select a Karaoke audio mode, or turn off original vocals.

Record your songs

You can record your own songs onto a USB storage device. The recorded songs are saved as .MP3 files.

- 1 Insert a USB storage device.
- 2 Press **● KARAOKE**.
- 3 Follow the on-screen instructions to make a setting, and press **OK** to start recording.
 - ↳ The recording stops at the end of the song.
 - To exit the recording, press **● KARAOKE** again.



Note

- Make sure that the USB storage device has enough memory remaining.
- Neither DTS discs nor copy-protected discs can be recorded.

Use Philips EasyLink

This player supports Philips EasyLink which uses the HDMI CEC (Consumer Electronics Control) protocol. You can use a single remote control to control EasyLink compliant devices that are connected through HDMI. Philips does not guarantee 100% interoperability with all HDMI CEC devices.

- 1 Connect the HDMI CEC compliant devices through HDMI, and turn on the HDMI CEC operations on the TV and other connected devices (see the user manual of the TV or other devices for details).
- 2 Press **▲**.
- 3 Select **[Setup]** > **[Video]** > **[HDMI Setup]** > **[EasyLink Setup]**.
- 4 Select **[On]** under the options: **[EasyLink]**, **[One Touch Play]** and **[One Touch Standby]**.
 - ↳ EasyLink function is turned on.

One Touch Play

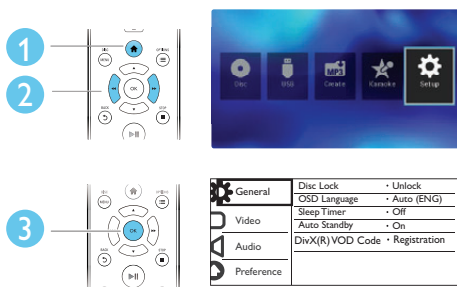
When you play a disc on this player, the TV automatically switches to the correct video input source.

One Touch Standby

When a connected device (for example TV) is put to standby with its own remote control, this player is put to standby automatically.

3 Change settings

This section helps you change the settings of this player.



Note

- You cannot change a menu option that is grayed out.
- To access **[Preference]**, stop the disc play.
- To return to the previous menu, press **⏮**. To exit the menu, press **⏴**.

General (sleep, standby...)

- 1 Press **⏴**.
- 2 Select **[Setup]** > **[General]** to access the general setup options.
 - **[Disc Lock]**: Lock or unlock a disc for play. To play a locked disc, you need to input your password: press **▲▼** to enter a digit, and press **◀▶** to change a digit position. The default password is "136900".
 - **[OSD Language]**: Select a language for on-screen menu.
 - **[Sleep Timer]**: Set a period of time for this player to switch automatically to standby mode from play.
 - **[Auto Standby]**: Enable or disable auto standby. If enabled, this player switches automatically to standby after 15

minutes of inactivity (for example, in pause or stop mode).

- **[DivX(R) VOD Code]**: Display the DivX® registration code and deregistration code.

Picture

- 1 Press **⏴**.
- 2 Select **[Setup]** > **[Video]** to access the video setup options.
 - **[TV System]**: Select a TV system that matches your TV. By default, this setting matches the common TVs in your country.
 - **[Aspect ratio]**: Select a picture display format to fit the TV screen.
 - **[Progressive]**: Turn on or off the progressive scan mode. If a progressive scan TV is connected to this player, turn on the progressive scan mode.
 - **[Picture Setting]**: Select a predefined color setting, or customize a setting.
 - **[HD JPEG]**: Enable this feature to view high-definition pictures through HDMI connection.
 - **[HDMI Setup]**: Set up for HDMI connection.
 - **[Resolution]**: Select a resolution for high definition videos.
 - **[HDMI Deep Color]**: Create vivid images with more color details when the video content is recorded in Deep Color and the TV supports this feature.
 - **[Wide Screen]**: Select a display format for wide screen videos.
 - **[EasyLink Setup]**: See "Use your DVD player" > "Use Philips EasyLink" for details.



Note

- To achieve progressive scan pictures, make sure that your TV supports the progressive scan feature, and your TV is connected to this player through the **Y/Pb/Pr** connectors.

increases the volume of soft sound (such as speech).



Note

- Night mode is only available for Dolby encoded DVD discs.

Sound

- 1 Press **▲**.
- 2 Select **[Setup]** > **[Audio]** to access the audio setup options.
 - **[Analogue Output]**: Select an audio format for sound output when this player is connected through the **AUDIO OUT L/R** connectors.
 - **[Digital Audio]**: Select an audio format for sound output when this player is connected through the **COAXIAL** connector.
 - **[Digital Output]**: Select a type of digital output: **[Off]** - Disable digital output; **[All]** - Support multi-channel audio formats; **[PCM Only]** - Downmix to two-channel audio signal.
 - **[LPCM Output]**: Select a LPCM (Linear Pulse Code Modulation) output sampling rate. The higher the sampling rate, the better the sound quality. **[LPCM Output]** is enabled only when **[PCM Only]** is selected under **[Digital Output]**.
 - **[HDMI Audio]**: Enable or disable the audio output through HDMI connection.
 - **[Audio Sync]**: Set a delay time for audio output to match the video play.
 - **[Volume]**: Change a volume level.
 - **[Sound Mode]**: Select a preset sound effect.
 - **[Night Mode]**: Select quiet or full dynamic sound. Night mode decreases the volume of loud sound and

Preference (languages, parental control...)

- 1 Press **▲**.
- 2 Select **[Setup]** > **[Preference]** to access the preference setup options.
 - **[Audio]**: Select an audio language for video.
 - **[Subtitle]**: Select a subtitle language for video.
 - **[Disc Menu]**: Select a menu language for a video disc.
 - **[Parental Control]**: Restrict access to discs that are encoded with ratings. Input "136900" to access the restriction options: When the password field is highlighted, press **OK** to enter an input stage, press **▲▼** to select a digit and press **◀▶** to change a digit position.
 - **[PBC]**: Display or skip the content menu for VCD and SVCD.
 - **[Password]**: Set or change a password to play a restricted disc. Input "136900" if you do not have a password or if you have forgotten your password
 - **[DivX Subtitle]**: Select a character set that supports the subtitle of your DivX video.
 - **[Version Info]**: Display the software version for this player.
 - **[Default]**: Reset all settings to the factory default, except for the settings for **[Disc Lock]**, **[Parental Control]** and **[Password]**.



Note

- If your preferred language is not available for disc language, audio or subtitle, you can select **[Other]** from the menu options and input 4-digit language code which can be found at the back of this user manual.
- The rating levels are country-dependent. To allow all discs to be played, select **[8 Adult]**.

4 Software update



Note

- Power supply must not be interrupted during software update.

To check for updates, compare the current software version of this player with the latest software version (if available) at the Philips website.

- 1** Press **⬆**.
- 2** Select **[Setup] > [Preference] > [Version Info]**, and then press **OK**.
- 3** Write down the model name and the software version number.
- 4** Visit www.philips.com/support to check for the latest software version, using the model name and software version number.
- 5** Refer to the upgrade instructions given on the website to complete the software update.

5 Specifications




Note

- Specifications are subject to change without notice

Region code

This player can play discs with the following region code.

DVD region code	Countries
	Latin America

Playable media

- DVD, DVD-Video, VCD, SVCD, Audio CD
- DVD+R/+RW, DVD-R/-RW, DVD+R/-R DL (Dual Layer), CD-R/-RW (maximum 200 folders and 9999 files)
- USB storage device

File format

- Video: avi, .divx, .xvid
- Audio: .mp3, .wma
- Picture: .jpg, .jpeg

USB

- Compatibility: Hi-Speed USB (2.0)
- Class support: USB Mass Storage Class
- File system: FAT16, FAT32, NTFS
- Maximum number of albums/folders: 200
- Maximum number of tracks/titles: 9999
- USB port: 5V \pm , 500mA
- Support USB HDD (Hard Disc Drive): an external power source may be needed

Video

- Signal system: PAL, NTSC
- Composite video output: 1 Vp-p (75 ohm)
- Component video output: 0.7 Vp-p (75 ohm)
- HDMI output: 480i, 480p, 576i, 576p, 720p, 1080i, 1080p, Auto

Audio

- 2-channel analog output

- Audio Front L&R : 2 Vrms (47k Ohm)
- Digital output: 0.5 Vp-p (75 Ohm)
 - Coaxial
- HDMI output
- Sampling frequency:
 - MP3: 22.05 kHz, 24 kHz, 32 kHz, 44.1 kHz, 48 kHz
 - WMA: 44.1 kHz, 48 kHz
- Constant bit rate:
 - MP3: 8 kbps - 320 kbps
 - WMA: 64 kbps - 192 kbps

Main unit

- Dimensions (W x H x D): 310 x 39.5 x 210 (mm)
- Net Weight: 1.0 kg

Power

- Power supply rating: AC 110-240V~, 50-60 Hz
- Power consumption: 11 W
- Power consumption in standby mode: < 0.5 W

Accessories supplied

- Remote control and one battery
- Power cord
- HDMI cable
- Audio/Video cables
- User Manual
- AC power plug adapter

Laser specification

- Type: Semiconductor laser InGaAlP (DVD), AlGaAs (CD)
- Wave length: 658 nm (DVD), 790 nm (CD)
- Output Power: 7.0 mW (DVD), 10.0 mW (VCD/CD)
- Beam divergence: 60 degrees

6 Troubleshooting



Warning

- Risk of electric shock. Never remove the casing of the player.

To keep the warranty valid, never try to repair the player yourself.

If you have problems using this player, check the following points before you request service. If you still have a problem, register your player and get support at www.philips.com/support.

If you contact Philips, you will be asked for the model and serial number of this player. The model number and serial number are on the back of this player. Write the numbers here:
Model No. _____
Serial No. _____

No picture.

- Refer to the TV user manual for how to select the correct video input channel.
- If you have turned on the progressive scan or changed a TV system setting, switch back to the default setting: 1) Press **▲** to open the disc compartment. 2) Press **DISC MENU** (for progressive scan) or **SUBTITLE** (for TV system).

No picture on HDMI connection.

- If this player is connected to an unauthorized display device, the audio/video signal cannot be output.
- If the HDMI cable is faulty, replace it with a new HDMI cable.
- If you have changed the setting for HDMI video resolution, switch to its default mode.

No sound output from the TV.

- Make sure that the audio cables are correctly connected between this player and the TV.

No sound during DivX video playback.

- The audio codes are not supported.

No sound on HDMI connection.

- If the connected device is non-HDCP compliant or only DVI-compatible, no sound can be heard from the HDMI output.
- Make sure that **[HDMI Audio]** is set to **[On]**.

No audio output from the loudspeakers of the connected external audio device (for example, stereo system, amplifier receiver).

- Make sure that the audio cables or coaxial cable are correctly connected.
- Switch the external audio device to correct audio input source.

Disc cannot be read.

- Make sure that this player supports the disc (see "Specifications" > "Playable media").
- For a recorded disc, make sure that the disc is finalized.

A USB storage device cannot be read.

- Make sure that the format of the USB storage device is compatible with this player (see "Specifications" > "USB").
- Make sure that the file system on the USB storage device is supported by this player (see "Specifications" > "USB").

Files cannot be displayed or read.

- Make sure that the number of files or folders does not exceed the supported limit of this player (maximum 9999 files or 200 folders).
- Make sure that this player supports these files (see "Specifications" > "File format").

DivX video files cannot be played.

- Make sure that the DivX video file is complete.
- Make sure that the file extension is correct.
- To play DivX DRM protected files from a USB storage device, connect this player to a TV through HDMI.

DivX subtitles do not display correctly.

- Make sure that the subtitle file has the same name as the DivX video file.
- Make sure that the subtitle file has an extension name supported by this player (.srt, .sub, .txt, .ssa, or .smi).

- Select the character set that supports the subtitle (see "Use your DVD player" > "DivX videos").

EasyLink feature does not work.

- Make sure that this player is connected to the Philips brand EasyLink TV, and the EasyLink option is turned on (see "Use your DVD player" > "Use Philips EasyLink").

7 Safety and important notice

Read and understand all instructions before you use this DVD player. If damage is caused by failure to follow the instructions, the warranty does not apply.

Safety

Risk of electric shock!

- Never expose the product and accessories to rain or water. Never place liquid containers, such as vases, near the product. If liquids are split on or into the product, disconnect it from the power outlet immediately. Contact Philips Consumer Care to have the product checked before use.
- Never place the product and accessories near naked flames or other heat sources, including direct sunlight.
- Never insert objects into the ventilation slots or other openings on the product.
- Where the mains plug or an appliance coupler is used as the disconnect device, it shall remain readily operable.
- Batteries (battery pack or batteries installed) shall not be exposed to excessive heat such as sunshine, fire or the like.
- Disconnect the product from the power outlet before lightning storms.
- When you disconnect the power cord, always pull the plug, never the cable.

Risk of short circuit or fire!

- Before you connect the product to the power outlet, make sure that the power voltage matches the value printed on the back of the product.

- Avoid applying pressure on the power plugs. Loose power plugs can cause arcing or fire.

Risk of injury or damage to the product!

- To avoid exposure to laser radiation, do not disassemble.
- Do not touch the optical lens inside the disc compartment.
- Never place the product or any objects on power cords or on other electrical equipment.
- If the product is transported in temperatures below 5°C, unpack the product and wait until its temperature matches room temperature before connecting it to the power outlet.

Risk of overheating!

- Never install this product in a confined space. Always leave a space of at least four inches around the product for ventilation. Make sure that curtains or other objects never cover the ventilation slots on the product.

Risk of contamination!

- Remove the batteries if flat or if the remote control is not to be used for a long time.
- Batteries contain chemical substances. They should be disposed of properly.

Risk of swallowing batteries!

- The product/remote control may contain a coin type battery, which can be swallowed. Keep the battery out of reach of children at all times!



Care for your product

- Do not insert any objects other than discs into the disc compartment.
- Do not insert warped or cracked discs into the disc compartment.
- Remove discs from the disc compartment if you are not using the product for an extended period of time.
- Only use microfiber cloth to clean the product.

Care of the environment



Your product is designed and manufactured with high quality materials and components, which can be recycled and reused. Never dispose of your product with other household waste. Please inform yourself about the local rules on the separate collection of electrical and electronic products and batteries. The correct disposal of these products helps prevent potentially negative consequences on the environment and human health.

Your product contains batteries, which cannot be disposed of with normal household waste. Please inform yourself about the local rules on separate collection of batteries. The correct disposal of batteries helps prevent potentially negative consequences on the environment and human health.

Please visit www.recycle.philips.com for additional information on a recycling center in your area.

Compliance



This is CLASS II apparatus with double insulation, and no protective earth provided.

Copyright



**Be responsible
Respect copyrights**

This item incorporates copy protection technology that is protected by U.S. patents and other intellectual property rights of Rovi Corporation. Reverse engineering and disassembly are prohibited.

Trademarks



ABOUT DIVX VIDEO: DivX® is a digital video format created by DivX, LLC, a subsidiary of Rovi Corporation. This is an official DivX Certified® device that plays DivX video. Visit divx.com for more information and software tools to convert your files into DivX videos.

ABOUT DIVX VIDEO-ON-DEMAND: This DivX Certified® device must be registered in order to play purchased DivX Video-on-Demand (VOD) movies. To obtain your registration code, locate the DivX VOD section in your device setup menu. Go to vod.divx.com for more information on how to complete your registration.

DivX®, DivX Ultra®, DivX Certified® and associated logos are trademarks of Rovi

Corporation or its subsidiaries and are used under license.

DivX Ultra® Certified to play DivX® video with advanced features and premium content.



HDMI, the HDMI logo, and High-Definition Multimedia Interface are trademarks or registered trademarks of HDMI licensing LLC in the United States and other countries.



Manufactured under license from Dolby Laboratories.

Dolby and the double-D symbol are trademarks of Dolby Laboratories.



'DVD Video' is a trademark of DVD Format/Logo Licensing Corporation.

Language Code

Abkhazian	6566
Afar	6565
Afrikaans	6570
Amharic	6577
Arabic	6582
Armenian	7289
Assamese	6583
Avestan	6569
Aymara	6589
Azerbaizani	6590
Bahasa Melayu	7783
Bashkir	6665
Belarusian	6669
Bengali	6678
Bihari	6672
Bislama	6673
Bokmål, Norwegian	7866
Bosanski	6683
Brezhoneg	6682
Bulgarian	6671
Burmese	7789
Castellano, Español	6983
Catalán	6765
Chamorro	6772
Chenchen	6769
Chewa; Chichewa; Nyanja	7889
中文	9072
Chuang; Zhuang	9065
Church Slav; Slavonic	6785
Chuvash	6786
Corsican	6779
Česky	6783
Dansk	6865
Deutsch	6869
Dzongkha	6890
English	6978
Esperanto	6979
Estonian	6984
Euskara	6985
Ελληνικά	6976
Faroese	7079
Français	7082
Frysk	7089
Fijian	7074
Gaelic; Scottish Gaelic	7168
Gallegh	7176
Georgian	7565
Gikuyu; Kikuyu	7573
Guarani	7178
Gujarati	7185
Hausa	7265
Herero	7290
Hindi	7273
Hiri Motu	7279
Hrwatski	6779
Ido	7379
Interlingua (International)	7365
Interlingue	7365
Inuktitut	7385

Inupiaq	7375
Irish	7165
Íslenska	7383
Italiano	7384
Ivrit	7269
Japanese	7465
Javanese	7486
Kalaallisut	7576
Kannada	7578
Kashmiri	7583
Kazakh	7575
Kernewek	7587
Khmer	7577
Kinyarwanda	8287
Kirghiz	7589
Komi	7586
Korean	7579
Kuanyama; Kwanyama	7574
Kurdish	7585
Lao	7679
Latina	7665
Latvian	7686
Letzeburgesch;	7666
Limbungan; Limburger	7673
Lingala	7678
Lithuanian	7684
Luxembourgish;	7666
Macedonian	7775
Malagasy	7771
Magyar	7285
Malayalam	7776
Maltese	7784
Manx	7186
Maori	7773
Marathi	7782
Marshallese	7772
Moldavian	7779
Mongolian	7778
Nauru	7865
Navaho; Navajo	7886
Ndebele, North	7868
Ndebele, South	7882
Ndonga	7871
Nederlands	7876
Nepali	7869
Norsk	7879
Northern Sami	8369
North Ndebele	7868
Norwegian Nynorsk;	7878
Occitan; Provençal	7967
Old Bulgarian; Old Slavonic	6785
Oriya	7982
Oromo	7977
Ossetian; Ossetic	7983
Pali	8073
Panjabi	8065
Persian	7065
Polski	8076
Português	8084

Pushto	8083
Russian	8285
Quechua	8185
Raeto-Romance	8277
Romanian	8279
Rundi	8278
Samoan	8377
Sango	8371
Sanskrit	8365
Sardinian	8367
Serbian	8382
Shona	8378
Shqip	8381
Sindhi	8368
Sinhalese	8373
Slovensky	8373
Slovenian	8376
Somali	8379
Sotho; Southern	8384
South Ndebele	7882
Sundanese	8385
Suomi	7073
Swahili	8387
Swati	8383
Svenska	8386
Tagalog	8476
Tahitian	8489
Tajik	8471
Tamil	8465
Tatar	8484
Telugu	8469
Thai	8472
Tibetan	6679
Tigrinya	8473
Tonga (Tonga Islands)	8479
Tsonga	8483
Tswana	8478
Türkçe	8482
Türkmen	8475
Twi	8487
Uighur	8571
Ukrainian	8575
Urdu	8582
Uzbek	8590
Vietnamese	8673
Volapuk	8679
Walloon	8765
Welsh	6789
Volof	8779
Xhosa	8872
Yiddish	8973
Yoruba	8979
Zulu	9085



Specifications are subject to change without notice
© 2012 Koninklijke Philips Electronics N.V.
All rights reserved.

DVP3680K_55_UM_V1.0

