

# Always there to help you

Register your product and get support at  
[www.philips.com/support](http://www.philips.com/support)

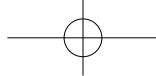


HTL1190B



## Quick start guide

# PHILIPS



# English

## Important

Read and understand all instructions before you use your product. If damage is caused by failure to follow instructions, the warranty does not apply.

## Help and support

For extensive online support, visit [www.philips.com/support](http://www.philips.com/support) to:

- download the user manual and the quick start guide
- watch video tutorials (available only for selected models)
- find answers to frequently answered questions (FAQs)
- email us a question
- chat with our support representative.

Follow the instructions on the website to select your language, and then enter your product model number.

Alternatively, you can contact Consumer Care in your country. Before you contact, note down the model number and serial number of your product. You can find this information on the back or bottom of your product.

## Safety

### Risk of electric shock or fire!

- Before you make or change any connections, make sure that all devices are disconnected from the power outlet.
- Never expose the product and accessories to rain or water. Never place liquid containers, such as vases, near the product. If liquids are spilt on or into the product, disconnect it from the power outlet

immediately. Contact Consumer Care to have the product checked before use.

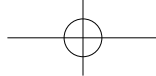
- Never place the product and accessories near naked flames or other heat sources, including direct sunlight.
- Never insert objects into the ventilation slots or other openings on the product.
- Where the mains plug or an appliance coupler is used as the disconnect device, the disconnect device shall remain readily operable.
- Batteries (battery pack or batteries installed) shall not be exposed to excessive heat such as sunshine, fire or the like.
- Disconnect the product from the power outlet before lightning storms.
- When you disconnect the power cord, always pull the plug, never the cable.

### Risk of short circuit or fire!

- For identification and supply ratings, see the type plate at the back or bottom of the product.
- Before you connect the product to the power outlet, ensure that the power voltage matches the value printed on the back or bottom of the product. Never connect the product to the power outlet if the voltage is different.

### Risk of injury or damage to this product!

- Never place the product or any objects on power cords or on other electrical equipment.
- If the product is transported in temperatures below 5°C, unpack the product and wait until its temperature matches room temperature before connecting it to the power outlet.
- Parts of this product can be made of glass. Handle with care to avoid injury and damage.



### **Risk of overheating!**

- Never install this product in a confined space. Always leave a space of at least four inches around the product for ventilation. Ensure curtains or other objects never cover the ventilation slots on the product.

### **Risk of contamination!**

- Do not mix batteries (old and new or carbon and alkaline, etc.).
- Danger of explosion if batteries are incorrectly replaced. Replace only with the same or equivalent type.
- Remove batteries if they are exhausted or if the remote control is not to be used for a long time.
- Batteries contain chemical substances, they should be disposed of properly.

### **Risk of swallowing batteries!**

- The product/remote control may contain a coin/button type battery, which can be swallowed. Keep the battery out of reach of children at all times! If swallowed, the battery can cause serious injury or death. Severe internal burns can occur within two hours of ingestion.
- If you suspect that a battery has been swallowed or placed inside any part of the body, seek immediate medical attention.
- When you change the batteries, always keep all new and used batteries out of reach of children. Ensure that the battery compartment is completely secure after you replace the battery.
- If the battery compartment cannot be completely secured, discontinue use of the product. Keep out of reach of children and contact the manufacturer.



This is CLASS II apparatus with double insulation, and no protective earth provided.

---

## **Care for your product**

Use only microfiber cloth to clean the product.

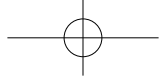
---

## **Care of the environment**

### **Disposal of your old product**



Your product is designed and manufactured with high quality materials and components, which can be recycled and reused. Do not throw away the product with the normal household waste at the end of its life, but hand it in at an official collection point or recycling. By doing this, you help to preserve the environment.



## 繁體中文

### 重要事項

在您開始使用產品之前，請先閱讀並了解所有指示。未遵守指示而造成的損壞，恕不在保固責任範圍內。

### 說明與支援

如需完善的線上支援，請造訪 [www.philips.com/support](http://www.philips.com/support) 以：

- 下載使用手冊和快速入門指南
- 觀賞影片教學課程（僅適用於部分機型）
- 瞭解產品常見問題 (FAQ) 的答案
- 以電子郵件向我們提問
- 與我們的支援代表洽談。

請遵循網站上的指示，選取您的語言，然後輸入您的產品型號。或者，您也可以聯絡貴國的客戶服務。在您聯絡前，請記下產品的機型與序號。您可以在產品背面或底部找到這項資訊。

### 安全

#### 觸電或火災的風險！

- 在您執行或變更任何連線時，請確實拔除所有裝置的電源。
- 請勿讓產品及配件暴露在雨或水中。請勿將花瓶等液體容器放置在產品附近。若不慎將水濺灑於本產品或滲入機內，請立即拔除電源。聯絡客戶服務中心，進行檢查後再使用產品。
- 請勿將本產品及配件直接靠近火燭或熱源，也勿直接曝曬於陽光下。
- 請勿將物品插入產品通風孔或其他開口中。
- 當電源插頭或產品連接器作為中斷連接裝置時，中斷連接裝置應保持隨時可操作。

- 電池（安裝的電池套組或電池）請勿暴露在過度的熱源下，例如日照或火焰等。
- 雷暴來臨前，請先將本產品插頭拔下。
- 拔除電源線時，務必從插頭部位拉起，切莫拉扯纜線。

#### 短路或火災的風險！

- 如需辨識產品機型與電源供應功率，請參閱產品背面或底部的機型牌。
- 將本產品接上電源插座之前，請確認插座電壓與印在產品背面或底部的數值相同。若兩者的電壓不符，切勿將本產品接上該電源插座。

#### 本產品損害或毀壞的風險！

- 請勿將本產品或任何物品置於電源線或其他任何電子器材上。
- 若運送本產品時溫度低於 5°C，則開箱後應待機體回溫至室溫，再插上電源。
- 產品零組件可能以玻璃製成。請小心處理，以避免受傷和損壞。

#### 有過熱危險！

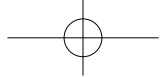
- 請勿將本產品放置於狹隘的空間。本產品周圍務必至少預留四英吋的空間以保持通風。請確保勿使窗簾或其他物品遮蓋本產品的通風孔。

#### 污染的風險！

- 請勿混用電池（新舊混用或碳鹼性電池混用等）。
- 未能正確更換電池將造成電池爆炸的危險。限換用同型或通用類型。
- 若電池電量耗盡或長時間不使用遙控器時，請將電池取出。
- 電池內含化學物質，請妥善丟棄。

#### 誤食電池的風險！

- 產品/遙控器含有一個鈕扣/按鈕型電池，可能會遭到誤食。請勿讓孩童接觸電池！如果遭到誤食，電池會導致嚴重傷害或死亡。可能在誤食後兩小時內發生嚴重體內燒傷。



- 若您懷疑電池已遭誤食或放入身體任何部位，請立即尋求醫療照護。
- 在您更換電池時，請勿讓孩童接觸新的或使用過的電池。請確認您更換電池後，電池插槽完全安全穩固。
- 如果電池插槽非完全安全穩固，請停止使用本產品。請勿讓孩童接觸，並聯絡製造商。



此為具備雙層絕緣的 CLASS II 產品，不提供保護接地。

## 保護您的產品

請僅使用超細纖維布料清潔產品。

## 保護環境

### 舊產品的處置



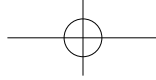
您的產品是使用高品質材質和元件所設計製造，可回收和重複使用。

本產品使用壽命結束時，請勿與一般家庭廢棄物一併丟棄。請將該產品送至政府指定的回收點或進行回收。此舉能為環保盡一份心力。

## 低功率電波輻射性電機管理辦法

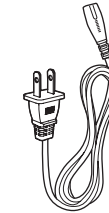
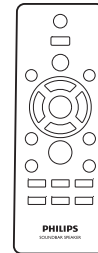
第十二條 經型式認證合格之低功率射頻電機，非經許可，公司、商號或使用者均不得擅自變更頻率、加大功率或變更原設計之特性及功能。

第十四條 低功率射頻電機之使用不得影響飛航安全及干擾合法通信；經發現有干擾現象時，應立即停用，並改善至無干擾時方得繼續使用。

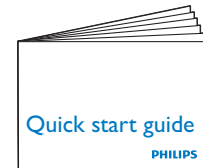


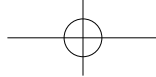
**EN** Before using your product, read all accompanying safety information

**ZH-TW** 使用您的產品前，請先閱讀所有附隨的安全資訊



Power Cord

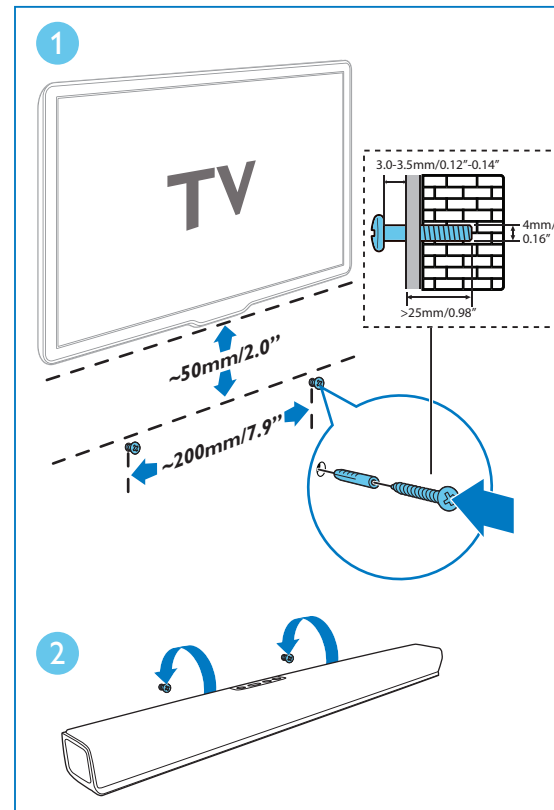
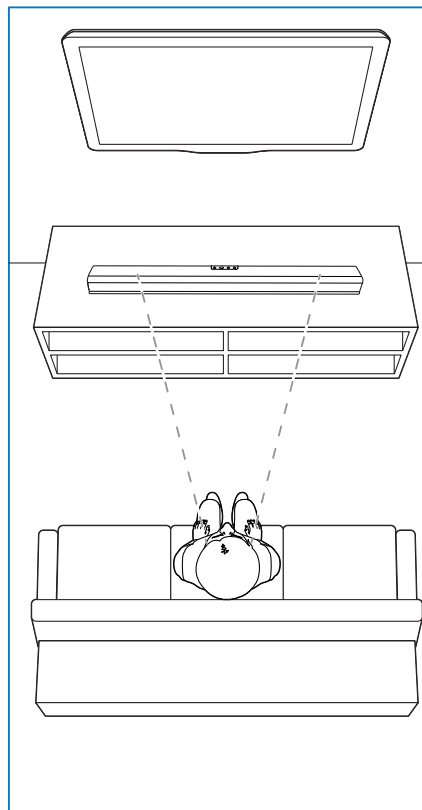




1

**EN** Position this product  
Wall mount this product  
(optional)

**ZH-TW** 放置本產品  
壁掛本產品 (自選)

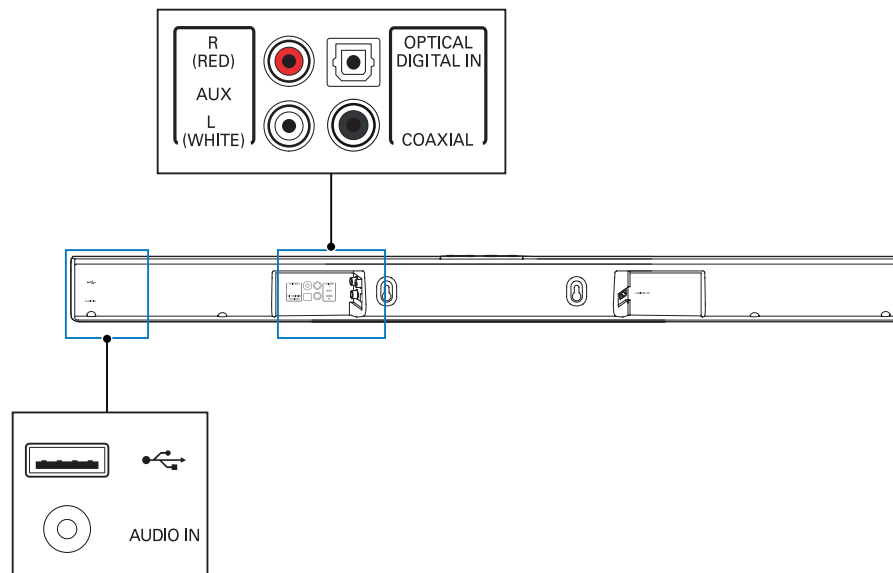




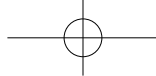
# 2

**EN** Connect this product

**ZH-TW** 連接本產品





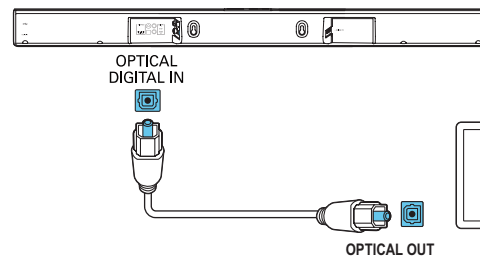


# 3

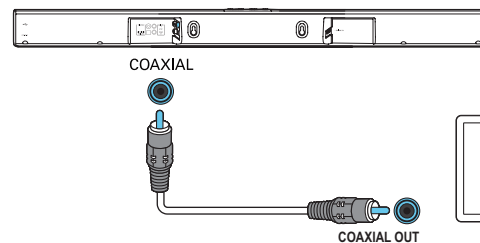
**EN** Hear audio from TV in one of the following ways  
(Mute your TV)

**ZH-TW** 用下列其中一種方式聆聽電視的音訊  
(將電視靜音)

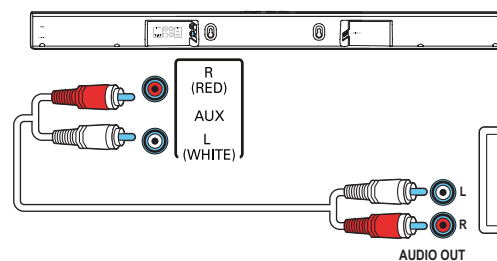
## OPTICAL

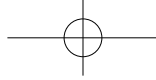


## COAXIAL



## AUDIO L/R

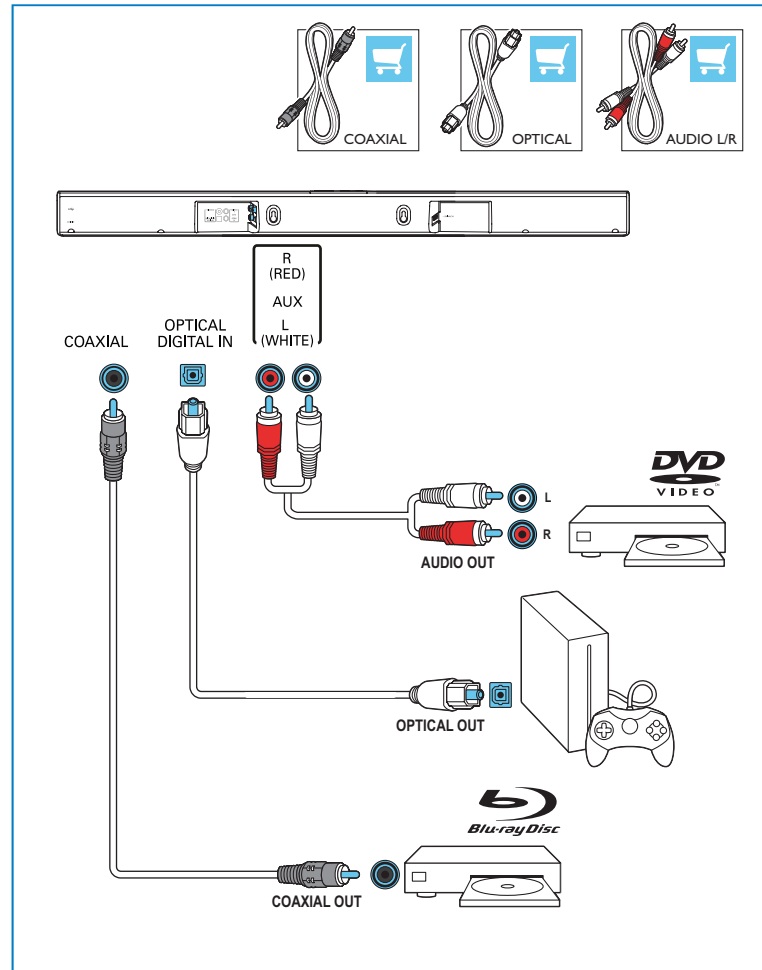


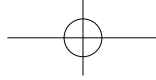


4

**EN** Enjoy audio from your devices

**ZH-TW** 享受裝置的音訊

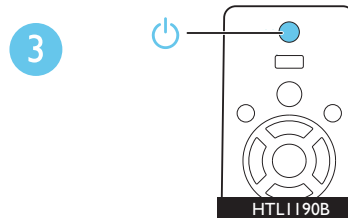
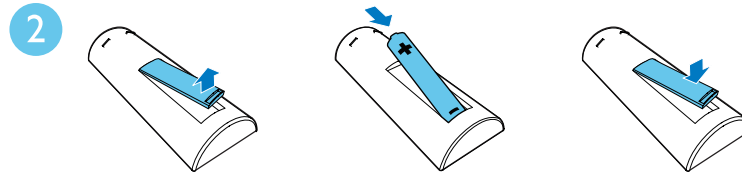
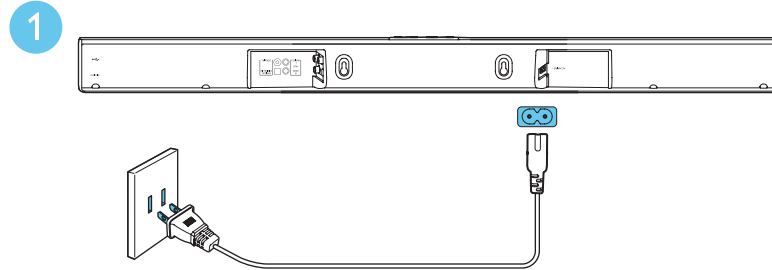


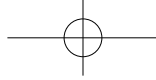


# 5

**EN** Switch on this product

**ZH-TW** 啟動本產品

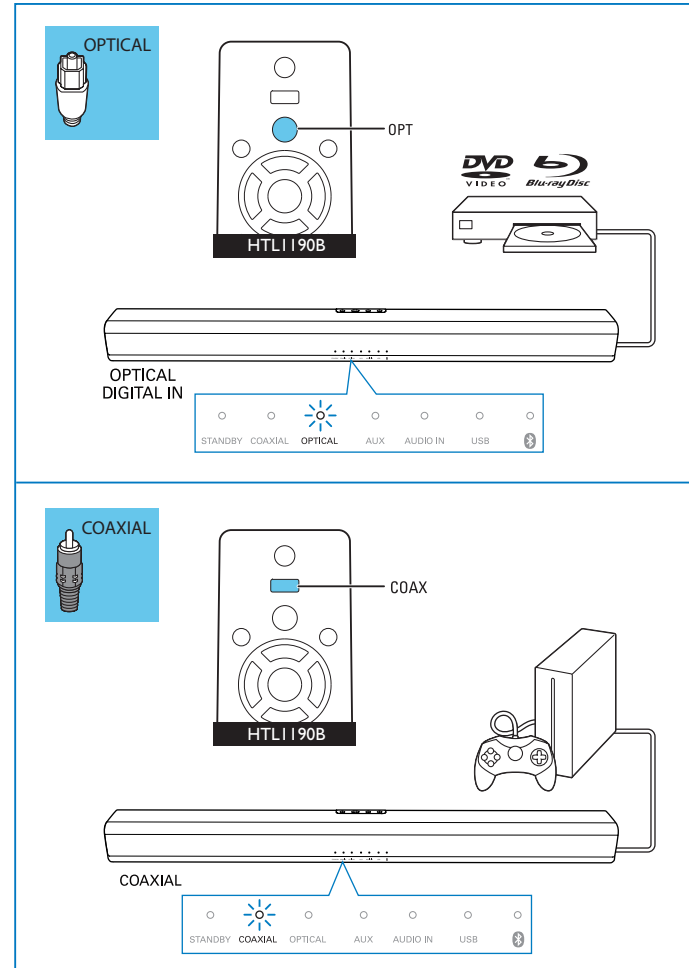


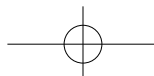
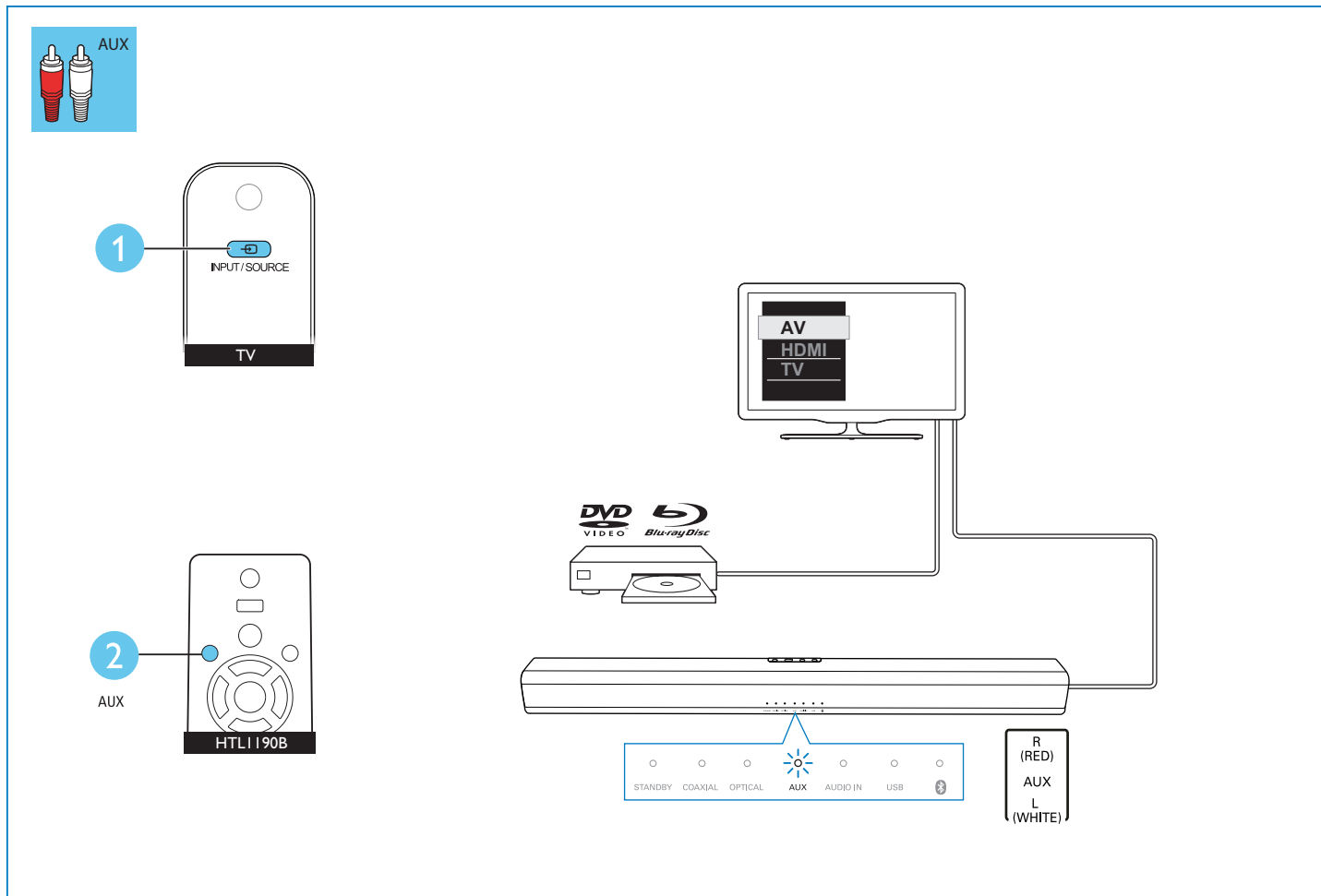


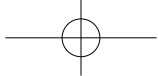
6

**EN** Select the correct audio source

**ZH-TW** 選取正確的音訊輸入



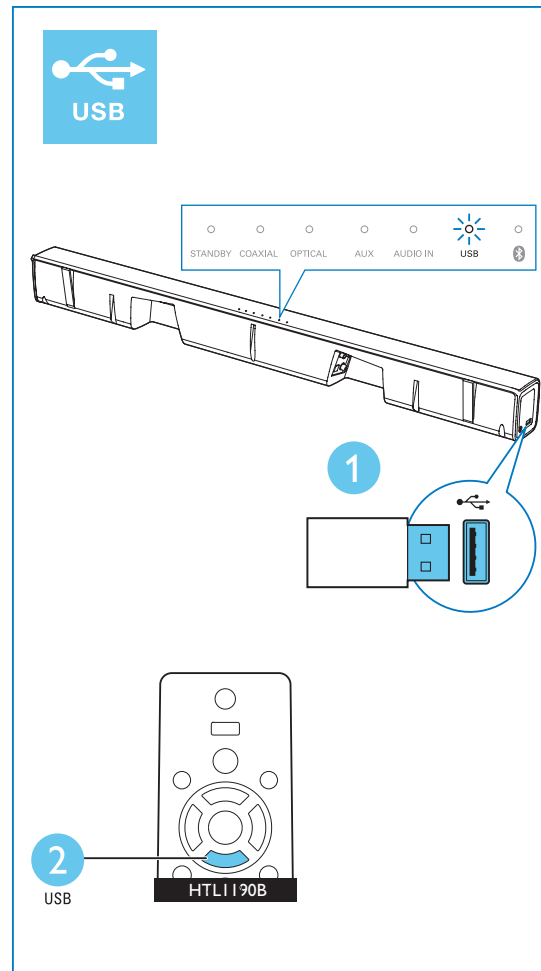
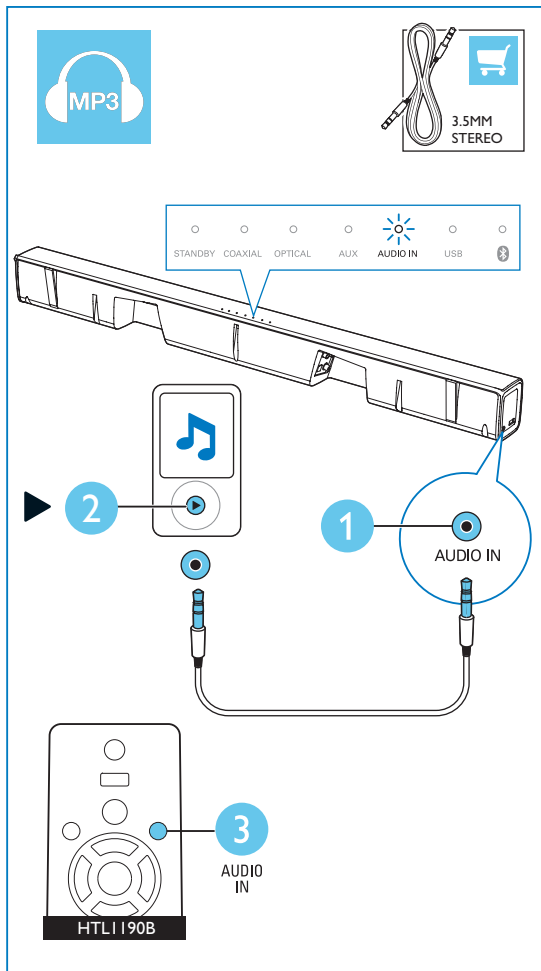


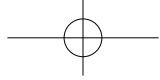


# 7

EN Play other devices

ZH-TW 播放其它裝置

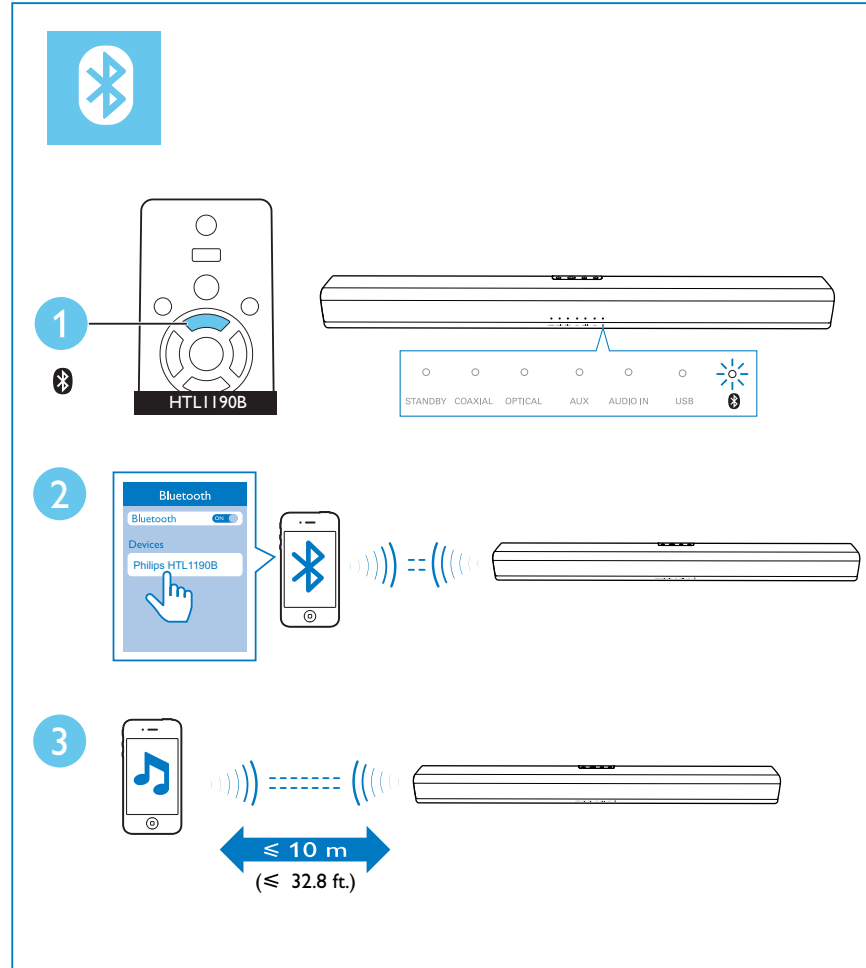




# 8

**EN** Play audio through Bluetooth

**ZH-TW** 透過藍牙播放音訊





**EN** For more information about  
using this product, visit  
[www.philips.com/support](http://www.philips.com/support)

**ZH-TW** 如果要瞭解產品的更多資訊，  
請瀏覽 [www.philips.com/support](http://www.philips.com/support)



[www.philips.com/support](http://www.philips.com/support)



Manufactured under license from Dolby Laboratories. Dolby and the double-D symbol are trademarks of Dolby Laboratories.



The Bluetooth® word mark and logos are registered trademarks owned by Bluetooth SIG, Inc. and any use of such marks by Gibson is under license. Other trademarks and trade names are those of their respective owners.



Specifications are subject to change without notice  
2015 © Gibson Innovations Limited. All rights reserved.  
This product has been manufactured by, and is sold under the responsibility of Gibson Innovations Ltd., and  
Gibson Innovations Ltd. is the warrantor in relation to this product.  
Philips and the Philips Shield Emblem are registered trademarks of Koninklijke Philips N.V. and are used under  
license from Koninklijke Philips N.V.

HTL1190B\_96\_QSG\_V1.0

