

Register your product and get support at
请在以下网站注册您的产品和获取支持
www.philips.com/welcome

PV7005



EN	User manual	2
ZH-CN	用户手册	30

PHILIPS

Contents

1 Important	3	7 Read eBooks	17
Safety	3	Browse the text files	17
Notice	3	Read text files	17
License Texts and Acknowledgements for any open source software used in this		Set text file play options	18
Philips product	5	Delete text files	18
Need help?	6		
2 Your in-car entertainment system	7	8 Adjust settings	19
Introduction	7	Select language	19
What's in the box	7	Adjust screen settings	19
Overview of the player	8	Set date and time	19
Overview of remote control	8	Other settings	19
		Check file/memory information	20
		Restore factory settings	21
3 Get started	9	9 Others	22
Charge power	9	Transfer files from internal memory to	
Install remote control battery	9	SD card	22
Turn the player on or off	10	Use the player in car	23
Calibrate the touch screen	10	Play on your HDTV	24
Adjust volume	10	Reset	25
Lock and unlock the screen	11	Upgrade software	25
Transfer files to the player	11		
Use a micro SD card	11	10 Specifications	26
Connect an USB device	11	System requirements	26
		Supported music file formats	26
4 Watch videos	12	11 Troubleshooting	27
Browse the video library	12		
Play videos	12		
Set video play options	12		
Delete videos	13		
5 Listen to music	14		
Browse the music library	14		
Play music	14		
Set music play options	14		
Delete songs	15		
6 View pictures	16		
Browse the picture library	16		
Play pictures	16		
Set picture play options	16		

1 Important

Safety

Risk of damage or malfunction!

- Do not expose the product to excessive heat caused by heating equipment or direct sunlight.
- Do not drop the product or allow objects to fall on your player.
- Never expose the product and accessories to rain or water. Never place liquid containers, such as vases, near the product. If liquids are split on or into the product, disconnect it from the power outlet immediately.
- Back up your files. Ensure that you retain the original files you have downloaded to your device. Philips is not responsible for any loss of data if the product becomes damaged or not readable / legible.

Risk of contamination!

- Remove the battery if it is exhausted or if the remote control is not to be used for an extended period of time.
- Battery contain chemical substances. It should be disposed of properly.

Risk of swallowing batteries!

- The remote control contain a coin type battery, which can be swallowed. Keep the battery out of reach of children at all times!

Hearing Safety



Listen at a moderate volume:

Using headphones at a high volume can impair your hearing. This product can produce sounds in decibel ranges that may cause hearing loss for a normal person, even for exposure less than a minute. The higher decibel ranges are offered for those that may have already experienced some hearing loss.

Sound can be deceiving. Over time your hearing 'comfort level' adapts to higher volumes of sound. So after prolonged listening, what sounds 'normal' can actually be loud and harmful to your hearing. To guard against this, set your volume to a safe level before your hearing adapts and leave it there.

To establish a safe volume level:

Set your volume control at a low setting.

Slowly increase the sound until you can hear it comfortably and clearly, without distortion.

Listen for reasonable periods of time:

Prolonged exposure to sound, even at normally 'safe' levels, can also cause hearing loss.

Be sure to use your equipment reasonably and take appropriate breaks.

Be sure to observe the following guidelines when using your headphones.

Listen at reasonable volumes for reasonable periods of time.

Be careful not to adjust the volume as your hearing adapts.

Do not turn up the volume so high that you can't hear what's around you.

You should use caution or temporarily discontinue use in potentially hazardous situations.

Do not use headphones while operating a motorized vehicle, cycling, skateboarding, etc.; it may create a traffic hazard and is illegal in many areas.

Notice



HDMI, and HDMI logo, and High-Definition Multimedia Interface are trademarks or registered trademarks of HDMI licensing LLC in the United States and other countries.



Manufactured under license from Dolby Laboratories. Dolby and the double D symbol are trademarks of Dolby Laboratories.



Real RMVB logo is a trademark or a registered trademark of RealNetworks, Inc.



Manufactured under license under U.S. Patent #'s: 5,451,942; 5,956,674; 5,974,380; 5,978,762; 6,487,535 & other U.S. and worldwide patents issued & pending. DTS and the Symbol are registered trademarks, & DTS 2.0+ Digital Out and the DTS logos are trademark of DTS, Inc. Product includes software. © DTS, Inc. All Rights Reserved.

Copyright information

All other brands and product names are trademarks of their respective companies or organizations.

Unauthorized duplication of any recordings whether downloaded from the Internet or made from audio CDs is a violation of copyright laws and international treaties.

The making of unauthorized copies of copy-protected material, including computer programs, files, broadcasts and sound recordings, may be an infringement of copyrights and constitute a criminal offense. This equipment should not be used for such purposes.

The Windows Media and the Windows logo are registered trademarks of Microsoft Corporation in the United States and/or other countries.

Be responsible! Respect copyrights.



Philips respects the intellectual property of others, and we ask our users to do the same.

Multimedia content on the internet may have been created and/or distributed without the original copyright owner's authorization. Copying or distributing unauthorized content may violate copyright laws in various countries including yours.

Compliance with copyright laws remains your responsibility.

The recording and transfer to the portable player of video streams downloaded to your computer is intended only for use with public domain or properly licensed content. You may only use such content for your private, non-commercial use and shall respect eventual copyright instructions provided by the copyright owner of the work. Such instruction may state that no further copies shall be made. Video streams may include copy protection technology that prohibits further copying. For such situations the recording function will not work and you will be notified with a message.

Modifications

Modifications not authorized by the manufacturer may void user's authority to operate the product.

Data logging

Philips is committed to improving the quality of your product and enhancing the Philips user experience. To understand the usage profile of this device, this device logs some info / data to the non-volatile memory region of the device. These data are used to identify and detect any failures or problems you as a user may experience while using the device. The data stored, for example, will be the duration of playback in music mode, duration of playback in turner mode, how many times battery low was encountered, etc. The data stored do not reveal the content or media used on the device or the source of downloads. The data stored on the device are retrieved and used ONLY if the user returns the device to the Philips service center and ONLY to simplify error detection and prevention. The data stored shall be made available to user on user's first request.

Disposal of your old product and batteries

Your product is designed and manufactured with high quality materials and components, which can be recycled and reused. Never dispose of your product with other household waste. Please inform yourself about the local rules on the separate collection of electrical and electronic products and batteries. The correct disposal of these products helps prevent potentially negative consequences on the environment and human health. Your product contains batteries, which cannot be disposed of with normal household waste. Please inform yourself about the local rules on separate collection of batteries. The correct disposal of batteries helps prevent potentially negative consequences on the environment and human health. Please visit www.recycle.philips.com for additional information on a recycling center in your area.

About operating and storage temperatures

- Operate in a place where temperature is always between 0 and 35°C (32 to 95°F)
- Store in a place where temperature is always between -20 and 45°C (-4 to 113°F).
- Battery life may be shortened in low temperature conditions.

Replacement parts/accessories:

Visit www.philips.com/support to order replacement parts/accessories.

Philips Electronics Hong Kong Ltd. hereby offers to deliver, upon request, a copy of the complete corresponding source code for the copyrighted open source software packages used in this product for which such offer is requested by the respective licenses.

This offer is valid up to three years after product purchase to anyone in receipt of this information. To obtain source code, please contact open.source@philips.com. If you prefer

not to use email or if you do not receive confirmation receipt within a week after mailing to this email address, please write to "Open Source Team, Philips Intellectual Property & Standards, P.O. Box 220, 5600 AE Eindhoven, The Netherlands." If you do not receive timely confirmation of your letter, please email to the email address above.

The translation of this document is for reference only.

In the event of any inconsistency between the English version and the translated version, the English version shall prevail.

2011 © Koninklijke Philips Electronics N.V. Specifications are subject to change without notice. Trademarks are the property of Koninklijke Philips Electronics N.V or their respective owners. Philips reserves the right to change products at any time without being obliged to adjust earlier supplies accordingly.

License Texts and Acknowledgements for any open source software used in this Philips product

SQLite

All of the deliverable code in SQLite has been dedicated to the HYPERLINK "[http://en.wikipedia.org/wiki/ Public_Domain](http://en.wikipedia.org/wiki/Public_Domain)" public domain by the authors. All code authors, and representatives of the companies they work for, have signed affidavits dedicating their contributions to the public domain and originals of those signed affidavits are stored in a firesafe at the main offices of HYPERLINK "<http://www.hwaci.com>" Hwaci. Anyone is free to copy, modify, publish, use, compile, sell, or distribute the original SQLite code, either in source code form or as a compiled binary, for any purpose, commercial or non-commercial, and by any means.

The previous paragraph applies to the deliverable code in SQLite - those parts of the SQLite library that you actually bundle and ship with a larger application. Portions of the documentation and some code used as part of the build process might fall under other licenses. The details here are unclear. We do not worry about the licensing of the documentation and build code so much because none of these things are part of the core deliverable SQLite library.

All of the deliverable code in SQLite has been written from scratch. No code has been taken from other projects or from the open internet. Every line of code can be traced back to its original author, and all of those authors have public domain dedications on file. So the SQLite code base is clean and is uncontaminated with licensed code from other projects.

Need help?

Please visit [**www.philips.com/welcome**](http://www.philips.com/welcome) where you can access a full set of supporting materials such as the user manual, the latest software updates, and answers to frequently asked questions.

2 Your in-car entertainment system

Congratulations on your purchase, and welcome to Philips! To fully benefit from the support that Philips offers, register your product at www.philips.com/welcome.

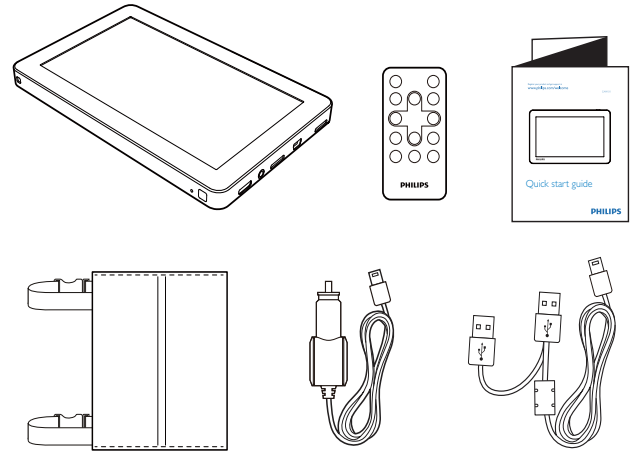
Introduction

With the portable video player, you can:

- Watch videos;
- Play music;
- View pictures;
- Read text files (.txt files);
- Expand the memory by inserting a Micro SD card (sold separately);
- Connect to external USB device
- Connect to TV via HDMI (High Definition) cable

What's in the box

Check that you have received the following items:

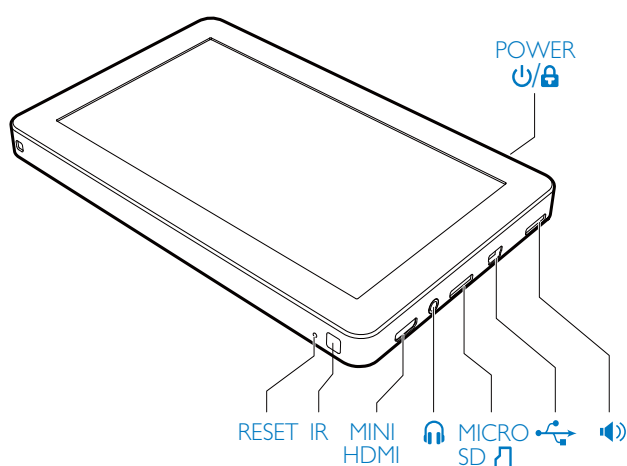


- Player
- USB cable
- Remote control
- Mounting bag
- Car adapter
- Quick start guide

Note

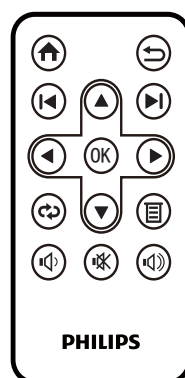
- The detailed user manual is loaded on to the player. You need to use Adobe Acrobat Reader to open the user manual.
- The images serve as reference only. Philips reserves the right to change color/design without notice.

Overview of the player



RESET	When the player hangs up, press it with a ball-point pen or similar tool to reset the player.
IR	Remote control sensor
MINI HDMI	Connect to a TV through an HDMI cable with a mini HDMI connector.
	3.5mm headphone connector
MICRO SD	Slot for Micro SD card
	USB connector for power charging and data transfer. To connect USB mass storage device.
	Speaker
POWER	Press and hold to switch the player on or off. Press it briefly to lock or unlock the screen.

Overview of remote control



	Navigate menus.
OK	Confirm a selection.
	Return to the Home menu.
	Return to the previous screen.
	Skip to the previous/next media file.
	Search backward/forward fast.
	Select a repeating mode during play.
	Access the option menu during play.
	Adjust the volume.
	Mute or restore the sound.

Note

- The remote control works only when this player is connected to an HDTV.

3 Get started

Always follow the instructions in this chapter in sequence.

Charge power

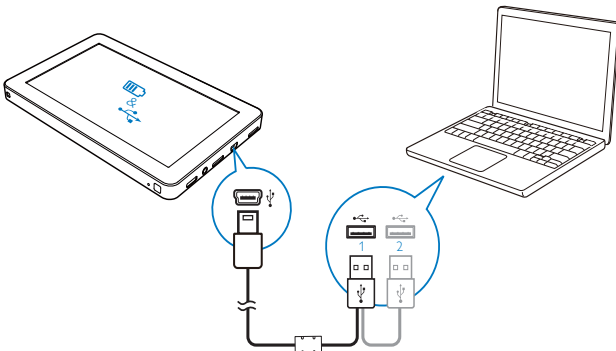
The player has a built-in battery that can be charged through the USB port of a computer.

- 1 Connect the player to a PC with the supplied USB cable.



Tip

- To complete recharging in a shorter period, connect both of the USB connectors to the USB ports of your computer.



↳ You are prompted to select:

: To transfer data to PC through the USB connection and charge the battery.

: To play media files from this player and charge the battery.

- 1 Tap or .
- ↳ The charging animation is displayed.



Note

- If no selection is made in 10 seconds, the player automatically applies (power charging and data transfer).

- 2 When the charging animation stops and the icon is displayed, the charging process is completed.








Note

- Rechargeable batteries have a limited number of charge cycles. Battery life and number of charge cycles vary by use and settings.

Battery level indication



The player shows the approximate battery level:

				
100%	75%	50%	25%	0%

When the battery is flat, the battery flashes. The player saves all settings and switches off within 10 minutes.



Tip

- To conserve battery power and increase the play time, set the backlight timer to a low value (go to  >  > [Backlight time].

Install remote control battery

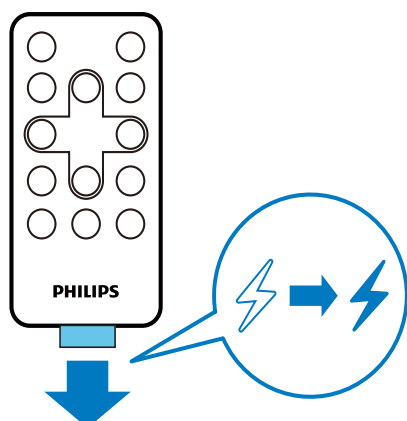


Caution

- Risk of explosion! Keep batteries away from heat, sunshine or fire. Never discard batteries in fire.
- Danger of explosion if battery is incorrectly replaced. Replace only with the same or equivalent type.
- Batteries contain chemical substances, they should be disposed of properly.

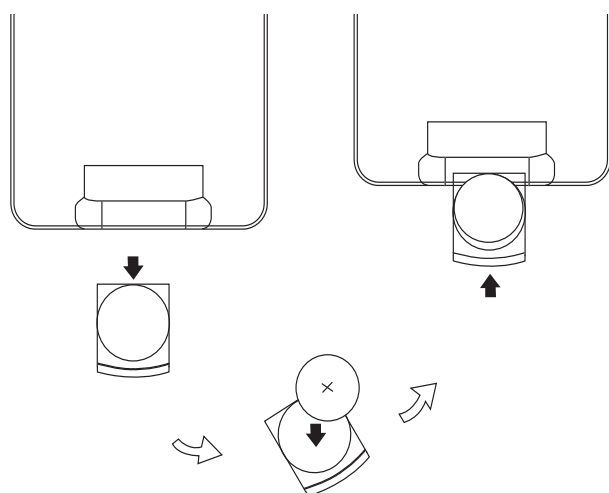
For first-time use:

Remove the protective tab to activate the remote control battery.



To replace the remote control battery:

- 1 Open the battery compartment.
- 2 Insert a new CR2025 battery with correct polarity (+/-) as indicated.
- 3 Close the battery compartment.



Turn the player on or off

- 1 Press and hold **POWER** until the player is switched on or off.
→ The home screen is displayed.



- 2 Tap on an option to access the functional menu.

Automatic standby and shut-down

If the player is idle (no play and no button is pressed) for a certain time, it switches off automatically.

To define the time duration, go to **⚙ > 🔋 > [Idle Time]**.

Calibrate the touch screen

Calibrate the touch screen to ensure that your taps can be precisely positioned.

- 1 When you turn on the player for the first time, you will be prompted to do calibration.
- 2 Follow the icon **⊕** on the screen to complete calibration.



Tip

- You can also tap **⚙ > ⚙ > [Calibrate]** to calibrate the touch screen.

Adjust volume

- 1 Tap **🔊**.
- 2 Tap **◀** or **▶** to adjust volume.



Tip

- You can directly tap a volume level on the volume bar.

Lock and unlock the screen

While watch a video or listening to music, you can lock all the touch controls to prevent unexpected operations.

To lock the screen manually

- 1 Press **POWER**.
 - ↳ The controls are locked.
 - ↳ If you are listening to music, the screen turns off.

- 2 To unlock the screen, press **POWER**.

Auto lock

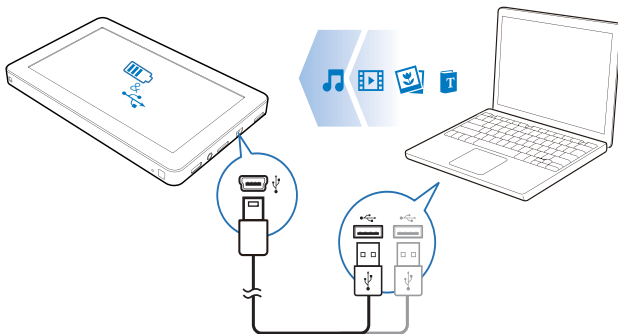
You can let the player lock automatically after being idle for a certain time.

To set the time duration, go to **⚙️ > 🔋 > [Idle Time]**.

Transfer files to the player

Transfer files in Windows Explorer

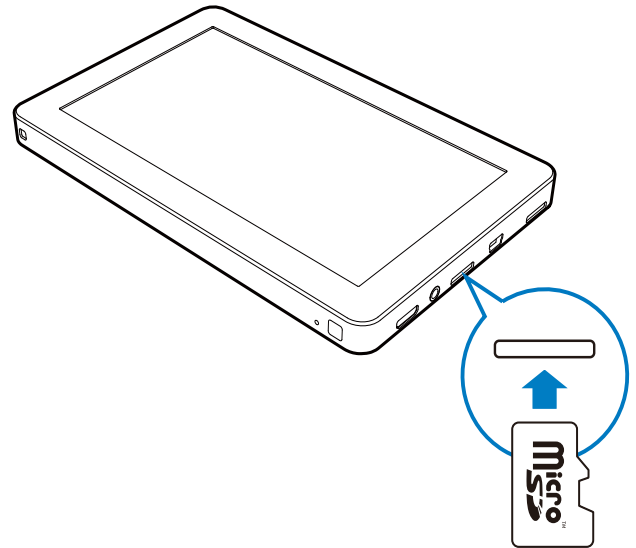
- 1 Connect the player to a PC.



- 2 Tap **⏏**.
- 3 On the PC, find "**Philips**" under **My Computer** or **Computer**.
- 4 Drag and drop the files/folders from your computer to the "**Philips**" folder.

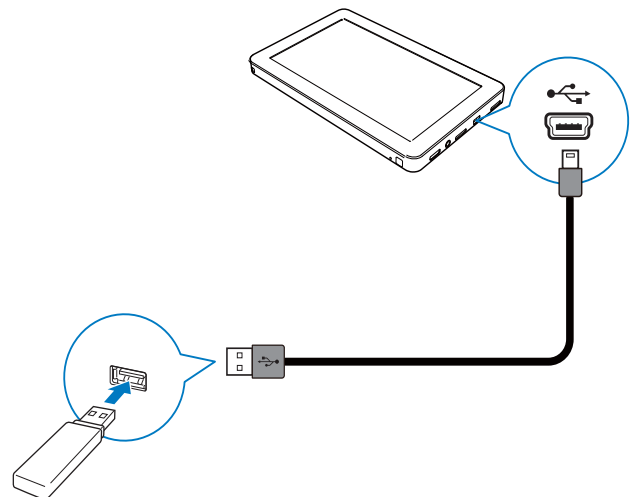
Use a micro SD card

You can expand the memory size of the player by inserting a Micro SD card (up to 32 GB).



Connect an USB device

You can also expand the memory size of the player by connecting an USB mass storage device.

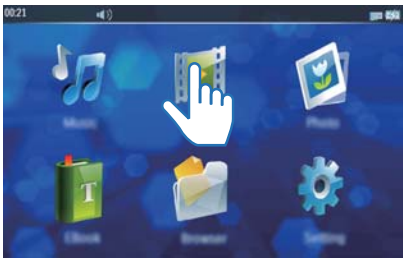


Note

- When USB device is connected, **[External]** will be displayed after you tap **⏏**.

4 Watch videos




Tap  to play videos.



Browse the video library

In the video library, video files are organized by file information.

1 Tap an icon to select a library.

	List all video files in internal memory.
	To browse video files in the folder structure. If there is micro SD card inserted, select storage first: [Internal]: Browse video files stored on this player. [Card]: Browse video files stored on the micro SD card. [USB]: Browse video files stored on the USB storage device.
	View the tag list of video files.

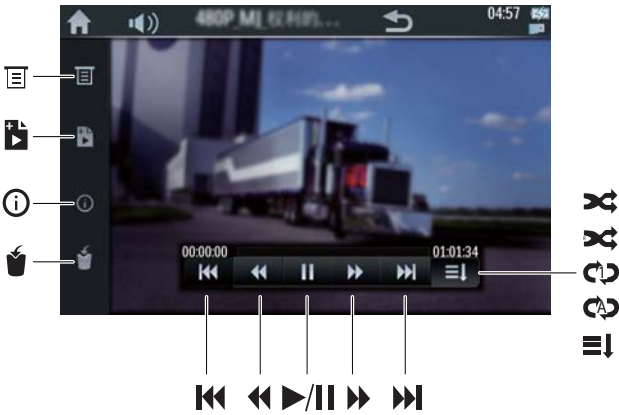
2 Swipe your finger up/down to browse through the list of options.













Play videos

1 In the video library, tap a video.
↳ Play starts.

Set video play options

On the play screen, tap icons to select play options:




	To adjust play settings: [Track]: to select a track. [Subtitle]: to select subtitle language. [Screen Size]: to select a video size: [Full Screen], [Scale], or [Original Size]. ↶: to go back to the previous menu.
	To add a tag for the current video file.
	To display the information of the current video file.
	To delete the current video file.
	To skip backward/forward.
	To search fast backward/forward within the current video.
	To pause or resume play.
	To play video files in the current folder in normal order without repetition.
	To play video files in the current folder in random order.
	To repeat video files in the current folder in random order.
	To repeat the current video file.
	To repeat all video files in current folder.

Delete videos

You can delete video files in either browse or play mode.

To delete video files in browse mode

- 1 Tap  to go to the video library.
- 2 Tap one of below icon to select a view mode




To delete video files stored in internal memory one by one.




To delete all the video files stored in internal memory, a micro SD card, or a USB device.



To delete tagged video files one by one.

- 3 Tap .
 - ↳ A warning message is displayed.
- 4 Tap [OK] to confirm.
 - ↳ The video file(s) is/are deleted.

To delete video file while playing

- 1 Tap anywhere on the screen to display control buttons.
- 2 Tap .
 - ↳ A warning message is displayed.
- 3 Tap [OK] to confirm.
 - ↳ Current video file is deleted.

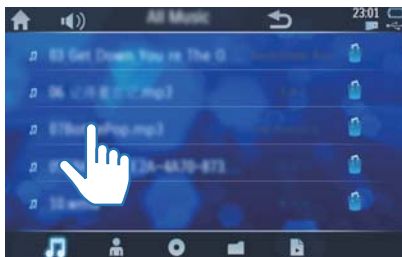
5 Listen to music

Tap  to play music.








Browse the music library

Music files are organized by file information.



1 Tap an icon to select a view mode.

	To list all songs stored in internal memory.
	To list songs by the name of artists.
	To list songs by albums.
	To browse songs in the folder mode. If there is micro SD card inserted, you need to select storage first: [Internal]: To browse songs stored in internal memory. [Card]: To browse songs stored on the micro SD card. [USB]: To browse songs stored on the USB storage device.
	To list the tagged songs.

2 Swipe your finger up/down to browse through the list of options.












Play music

1 In the music library, tap a song.
↳ Play starts.

Set music play options

While playing music, tap the icons to set play options.



	To view the album information of the current song.
	To add a tag for the current song.
	To delete the current song.
A-B	To play a specific section of a song repeatedly.
	To skip backward/forward.
	To search fast backward/forward,
	To pause or resume play.
	To play the songs in the current folder in normal order without repeat.
	To play songs in the current folder in random order.
	To repeat songs in the current folder in random order.
	To repeat current song.
	To repeat all songs in current folder.

Repeat a section


You can play a specific section of a song repeatedly.




- 1 When the song plays to the start point where you want to repeat, tap **A-B**.
↳ "A" is highlighted.
- 2 When it reaches the end point where you want to stop repeating, tap **A-B** again.
↳ "A-B" is highlighted. It plays the selection section (from A to B) repeatedly.
- 3 To exit the repeat mode, tap **A-B**.
↳ Highlight to "A-B" is removed.


Delete songs

You can delete songs in either browse or play mode.


To delete songs in browse mode

- 1 Tap  to go to the music library.
- 2 Tap one of below icons to select view mode.


	To delete songs in internal memory one by one.
	To delete all the songs in internal memory, a micro SD card, or a USB storage device.
	To delete tagged songs one by one.

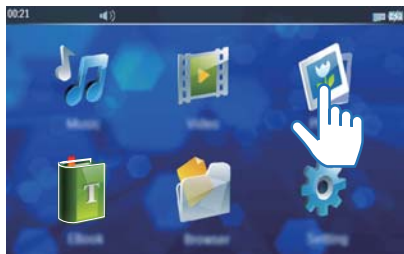
- 3 Tap .
↳ A confirmation message is prompted.
- 4 Tap **[OK]**.

To delete song in play mode

- 1 While playing the song, tap .
↳ Confirm as prompted.
- 2 Tap **[OK]**.
↳ Current song is deleted.




6 View pictures

Tap  to view pictures from the media library on the player.



Browse the picture library

Tap one of below icons to select view mode.

	To browse all pictures stored in internal memory in thumbnail view mode.
	To browse pictures in various folders in internal memory, micro SD card, or a USB storage device.
	To browse pictures files in a list.



Play pictures

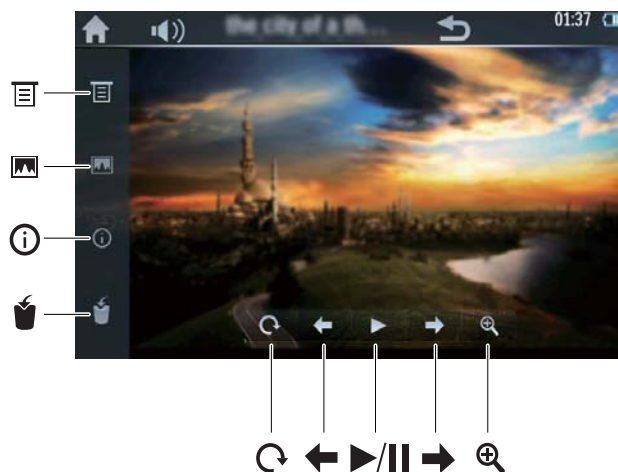
Tap on a picture file.









↳ The picture is displayed.




Set picture play options

On the play screen, tap the icons to select play options:



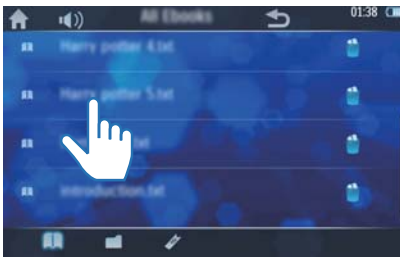
	To adjust play settings: [Slide Interval] : to set the time for switching one slide to the next. [Screen Size] : to select screen size. ↶ : to go back to the previous menu.
	To set the current picture as the wallpaper.
	To display the information of the current picture file.
	To delete the current picture file.
	To rotate the current picture clockwise by 90°.
	To skip backward/forward.
	To start slide show or to pause.
	To zoom in the current picture.

7 Read eBooks

Tap  to play text files (.txt) from the media library on the player.



Browse the text files



- 1 Tap one of below icons to select view mode.



To browse all text files stored in internal memory.



To browse text files in various folders in either internal memory , micro SD card, or a USB storage device.

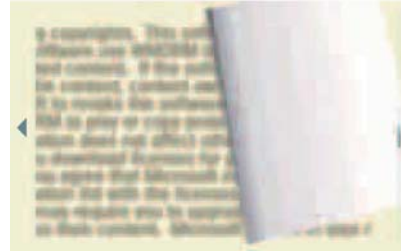


To browse tagged text files.

- 2 Swipe your finger up/down to browse through the list of files.









Read text files

- 1 Tap on a text file.
↳ The text file is displayed.
- 2 Tap ◀ or ▶ to turn pages.



Set text file play options


On the play screen, tap the icons to select play options:




	To switch to vertical view mode. Tap it again to resume the previous horizontal view mode.
	To delete the current text file.
	To add a bookmark to the current page.
	To turn pages.
	To turn pages automatically or to stop auto reading.
	To adjust settings: [Effect Setting] : select the effect of switching pages. [Auto Reading Speed] : select the time interval before one page switches to another. [Select Coding] : select the character coding to display texts normally. [Color scheme] : select a background color. [Jumppage] (Jump page) : Jump to a certain page directly.  : go back to the previous menu.
	To zoom in the current page.


Delete text files

You can delete text files either in browse mode or in play mode.

To delete text files in browse mode

- 1 Tap  to go to the eBook library.
- 2 Tap one of below icons to select view mode.

	To delete text files in internal memory one by one.
	To delete all the text files in internal memory, micro SD card, or a USB storage device.
	To delete the tagged text files one by one.



- 3 Tap .
↳ A confirmation message is displayed.
- 4 Tap **[Ok]**.

To delete text file in view mode

- 1 Tap .
- 2 Tap **[Ok]**.
↳ Current text file is deleted.



8 Adjust settings

Select language

- 1 Tap .
- 2 Tap .
- 3 Swipe your finger up/down to look for preferred language.
- 4 Tap on the language.
 - The selected language is ticked as ✓.



Adjust screen settings

- 1 Tap .
- 2 Tap .
 - ↳ Backlight settings is displayed.

[Brightness] To set screen brightness: 1lm to 5lm. To save battery power, select a low value.

[Backlight time] To set the time (10 seconds to 5 minutes) for screen auto off.

[Idle Time] To set idle time: 2 minutes to 30 minutes. After being idled for the selected time, the player will be turned off automatically.

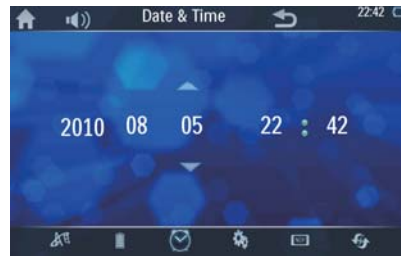
- 3 Tap on an option to enter its sub-menu.
- 4 Select a preferred setting by tapping on it and then tap **[Ok]**.
 - ↳ The selected option is ticked with ✓.

Tip

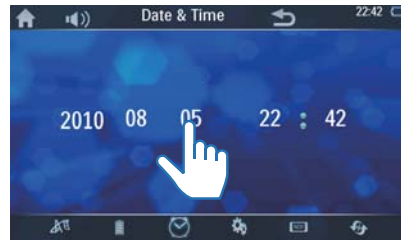
- If you do not want to have the screen or the player being turned off automatically, you can choose **[Off]** (off).

Set date and time

- 1 Tap .
- 2 Tap .
- 3 Tap on the date or time.
- 4 Tap ▲ / ▼ to select the value.





- 5 Tap on the set value to confirm.



Note

- The time is displayed in 24-hour format.

Other settings

- 1 Tap .
- 2 Tap .
 - ↳ A list of options is displayed.

[Calibrate]	To calibrate the touch screen. Follow the on screen displays.
[TVOUT]	If you connected the player to TV via HDMI cable, select [HDMI] .
[Audio setting] (Audio setting)	Adjust audio output settings.



Check file/memory information

- 1 Tap .
 - 2 Tap .
- ↳ The following information is displayed.



[Music Count]	The number of songs stored in the internal memory.
[Video Count]	The number of video files stored in the internal memory.
[Picture Count]	The number of picture files stored in the internal memory.
[TXT File Count]	The number of text files stored in the internal memory.
[Card Free]	Total space and space available on the SD card that is inserted into the player.
[Free Space]	Total space and space available in the internal memory.
[Ext. Free]	Space available on the extension device
[Firmware Version]	Current firmware version. Check the firmware version when updating firmware from the support website.

Restore factory settings



- 1 Tap .
 - 2 Tap .
- ↳ A list of options is displayed.

[Format Internal Memory]	Format the internal memory of this player.
[Format Card]	Format the micro SD card that is inserted to this player. Note: This option is available when there is a micro SD card inserted.
[Reset Default Settings]	Restore the player to factory settings. Files transferred to the player are retained.

9 Others

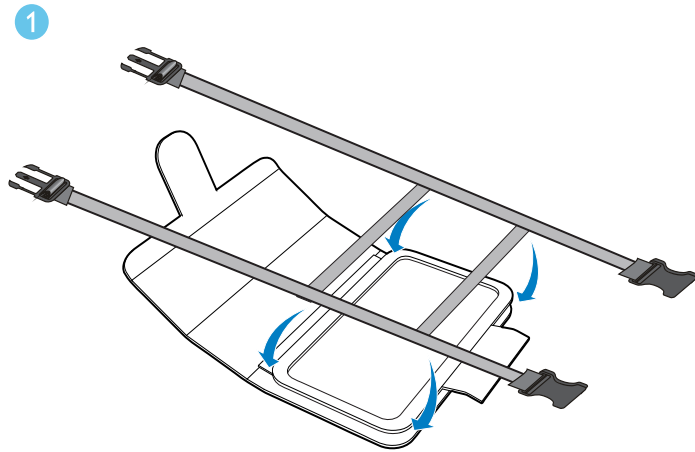
Transfer files from internal memory to SD card

You can transfer files from internal memory to micro SD card or from SD card to internal memory.

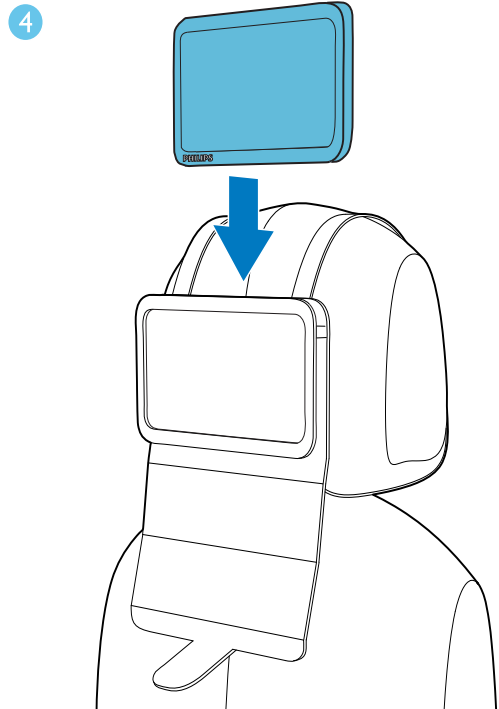
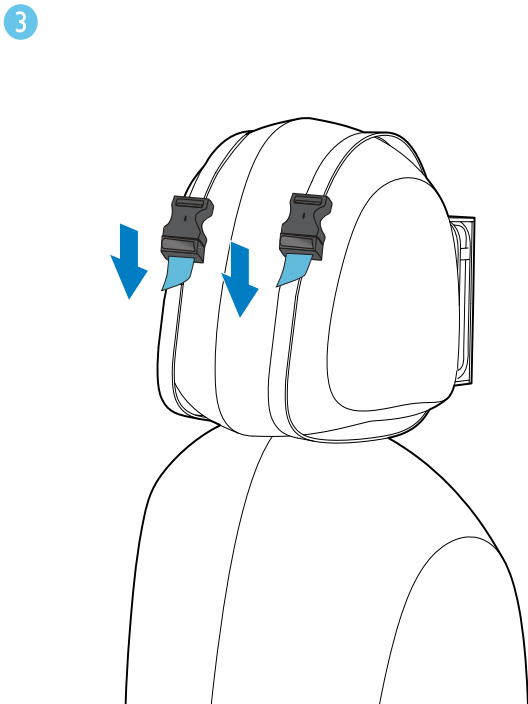
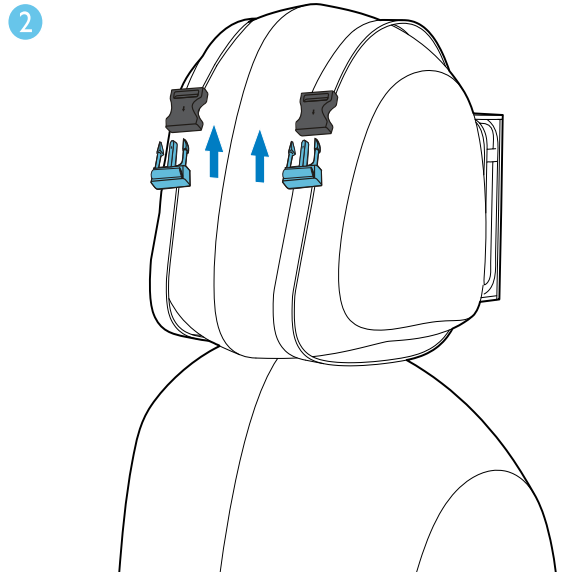
- 1 Insert a micro SD card (see section “ Use a micro SD card”).
- 2 Tap .
- 3 Tap **[Internal]** or **[Card]**.
 - ↳ A list of folders is displayed.
- 4 If you want to transfer all the files in the folder, tap ☐ on the right side. Otherwise, tap on the folder to display the files inside the folder; then tap ☐ to select the file.
 - ↳ The selected file or folder is ticked as ☒.
- 5 Tap .
- ↳ A confirmation message is displayed.
- 6 Tap **[OK]**.
 - ↳ The file(s) is/are transferred to internal memory or SD card .

Use the player in car

Mount the player on the headrest of your car



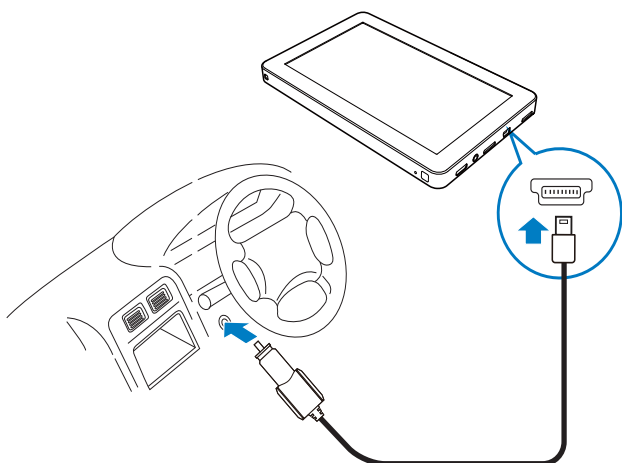
- 3 Pull the straps to secure the bag to the headrest.
- 4 Put the player into the bag.




- 1 Fit the fixing strap to the mounting bag.
- 2 Adjust the position of the bag, and then fasten the buckles.

Charge the player with car adaptor

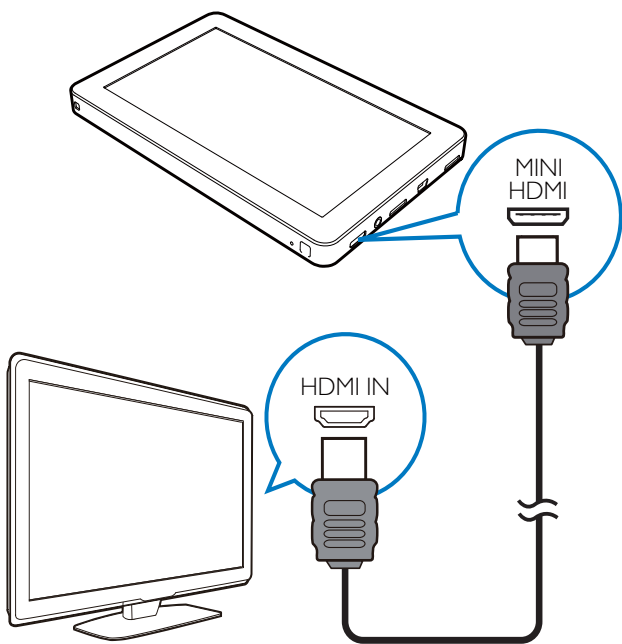
- 1 Connect the player to your car with the supplied car adaptor.
↳ The charging animation is displayed.





- 2 When the charging animation stops and the  icon is displayed, the charging process is completed.

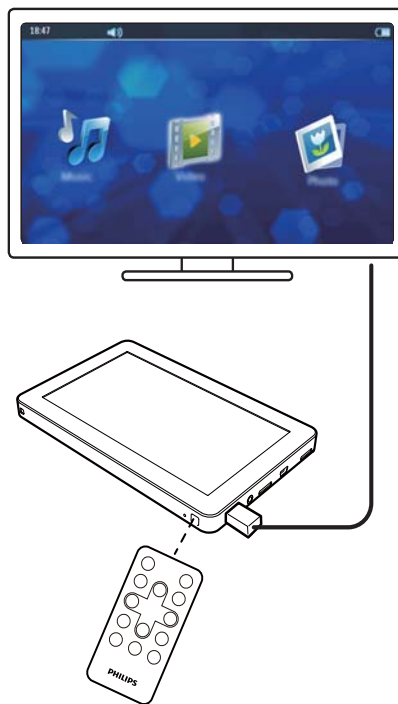
Play on your HDTV

You to play media files on a high-definition TV (HDTV) with this player.



- 1 As shown, use an HDMI cable with a mini HDMI connector to connect the player to an HDTV.
- 2 On the HDTV, select the video source:
 - With the remote control of the TV, select the HDMI that connects the player.

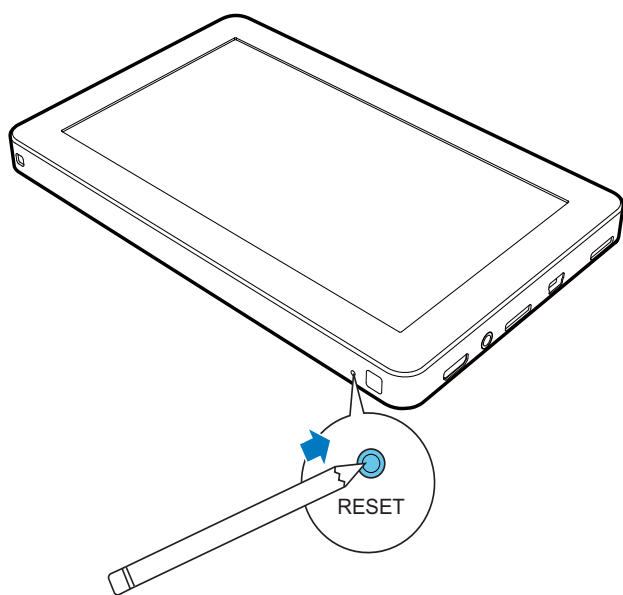
- 3 On the player, tap  > .
- 4 Tap [TVOUT] > [HDMI].
 - ↳ A list of HDTV video mode is displayed.
- 5 Tab a mode that your HDTV supports.
 - ↳ The Home menu is displayed on your HDTV.
- 6 Use the remote control of this player to play.




Reset

If the device is not working properly or the display freezes, you can reset it without losing data:

- 1 Press **RESET** with a ball-point pen or similar tool.
↳ The player restarts automatically.



Upgrade software

- 1 Ensure that the battery has more than 50% power left.
- 2 Check your firmware version. (see 'Check file/memory information' on page 20)
- 3 Go to <http://www.philips.com/support> to download the latest software onto your computer.
- 4 Connect the Player to your computer.
- 5 Tap .
- 6 Drag the latest software file into the folder "Philips PV7005".
- 7 Unplug the player from the computer.
↳ Software upgrading is done automatically.

10 Specifications

Power

Power supply	3000 mAh Li-ion polymer internal rechargeable battery	
Play time ¹ (music)	Up to 5 hours	
Play time ¹ (video)	3 hours	

Sound

Headphone	Channel separation	>60 dB
	Frequency Response	45 Hz - 16 kHz
	Output power (RMS)	2 x 3.5 mW
Loudspeakers	Signal to noise ratio	> 80 dB
	Output power (RMS)	2 x 500 mW
	Signal to noise ratio	> 80 dB

Storage media

Built-in memory capacity ²	4 GB NAND Flash
---------------------------------------	-----------------

Display

- Touch-sensitive color LCD 800 x 480 pixels

Connectivity

- Headphone 3.5 mm
- USB 2.0 High speed
- HDMI

Notes:

¹ Rechargeable batteries have a limited number of charge cycles. Battery life and number of charge cycles vary by use and settings.

² 1 GB = 1 billion bytes; available storage capacity is less. Full memory capacity may not be available as some memory is reserved

for the player. Storage capacity is based on 4 minutes per song and 128 kbps MP3 encoding.
³ Transfer speed depends on operating system and software configuration.

System requirements

- Windows® XP (SP3 or above) / Vista / 7
- Pentium III 800 MHz processor or higher
- 512 MB RAM
- 500 MB hard disk space
- Internet connection
- Windows® Internet Explorer 6.0 or later
- CD-ROM drive
- USB port

Supported music file formats

Video:

- **MPEG1/MPEG2:** Up to 40Mbps, 1920x1080 pixels, 24fps
- **MPEG4 AVC/MPEG-4 VISUAL:** Up to 50Mbps, 1920x1080 pixels, 24fps
- **MS MPEG-4:** Up to 800kbps, 352x288 pixels, 30fps
- **WMV9:** Up to 40Mbps, 1920x1080 pixels, 24fps
- **WMV7/8:** Up to 800kbps, 352x288 pixels, 30fps
- **RealVideo 3.0/4.0:** Up to 40Mbps, 1920x1080 pixels, 24fps
- **RealVideo 2.0:** Up to 800kbps, 352x288 pixels, 30fps
- **H264, X264:** Up to 50Mbps, 1920x1080 pixels, 24fps

Music:

- **MP3 bit rates:** 8 - 320 kbps and VBR
- **MP3 sample rates:** 8, 11.025, 16, 22.050, 24, 32, 44.1, 48 kHz
- **WMA bit rates:** 5 - 192 kbps VBR
- **WMA sample rates:** 8, 11.025, 16, 22.050, 24, 32, 44.1, 48 kHz
- **Flac:** 2 channels, sample rate 8 - 48 kHz

- **Ape:** 2 channels, sample rate 8 - 48 kHz, versions up to 3.99
- ID3-tag support

Picture:

- JPEG
- BMP

eBook:

- .txt file

11 Troubleshooting

The touch screen does not respond well.

What do shall I do?

- Use touch screen with a finger tip or another pointed object for better responsiveness.

The taps on the touch screen appear to be shifted. What do shall I do?

- For precisely positioned tapping on the screen, calibrate the touch screen. (see 'Other settings' on page 19)

How can I charge my player without a PC?

- You can charge your player the supplied car charger (see 'Charge the player with car adaptor' on page 22).
- Find more information about Philips chargers on www.philips.com. Go to Consumer Products --> Accessories --> Power Solutions.

Are there any tips to conserve battery power and maximize playtime?

- Adjust the brightness of the screen as low as possible.
- Set a short time for the backlight timer.
- Shorten the idle time before the display is automatically switched off. See "Adjust screen settings" for details.

Is it possible to expand the memory size of the device?

- Yes. The memory size of the device can be expanded by inserting a Micro SD card (not supplied). See "Use a micro SD card".

How do I clean my player?

- Clean your player by wiping it with a soft, slightly damp, lint-free cloth.

Caution: Don't use window cleaners, household cleaners, aerosol sprays, solvents, alcohol, ammonia, or abrasives to clean your player.

部件名称 Name of the Parts	有毒有害物质或元素 Hazardous/Toxic Substance					
	铅 (Pb, Lead)	汞 (Hg, Mercury)	镉 (Cd, Cadmium)	六价铬 (Chromium 6+)	多溴联苯 (PBB)	多溴二苯醚 (PBDE)
Housing 外壳	O	O	O	O	O	O
PWBs 电路板组件	X	O	O	O	O	O
Accessories (Remote control & cables) 附件（遥控器， 电源线，连接线）	X	O	O	O	O	O
Batteries in Remote Control (ZnC) 遥控器电池	X	O	O	O	O	O

○：表示该有毒有害物质在该部件所有均质材料中的含量均在SJ/T11363 - 2006 标准规定的限量要求以下。
O: Indicates that this toxic or hazardous substance contained in all of the homogeneous materials for this part is below the limit requirement in SJ/T11363 - 2006.

×：表示该有毒有害物质至少在该部件的某一均质材料中的含量超出SJ/T11363 - 2006 标准规定的限量要求。
X: Indicates that this toxic or hazardous substance contained in at least one of the homogeneous materials used for this part is above the limit requirement in SJ/T11363 - 2006.



环保使用期限 Environmental Protection Use Period

此标识指期限（十年），电子信息产品中含有的有毒有害物质或元素在正常使用的条件下不会发生外泄或突变，用户使用该电子信息产品不会对环境造成严重污染或对其人身、财产造成严重损害的期限。

This logo refers to the period (10 years) during which the toxic or hazardous substances or elements contained in electronic information products will not leak or mutate so that the use of these [substances or elements] will not result in any severe environmental pollution, any bodily injury or damage to any assets.

电池标识 Battery labeling logo



环保使用期限 Environmental Protection Use Period

此标识指期限（五年），电池中含有的有毒有害物质或元素在正常使用的条件下不会发生外泄或突变，用户使用该电池产品不会对环境造成严重污染或对其人身、财产造成严重损害的期限。

This logo refers to the period (5 years) during which the toxic or hazardous substances or elements contained in the **battery** will not leak or mutate so that the use of these [substances or elements] will not result in any severe environmental pollution, any bodily injury or damage to any assets.

