



Philips
Micro music system

DualDock

Dock for iPod/iPhone/iPad
DAB+



DCB2272

Sound system that fits your home

Obsessed with sound

Play and charge your iPod/iPhone/iPad with DualDock via Lightning and 30pin connectors and enjoy DAB+. The music system sounds sensational and offers an added bonus — it looks great in any home, with a 2-in-1 table stand for flexible placement.

Enrich your sound experience

- Bass Reflex Speaker System delivers a powerful, deeper bass
- Digital Sound Control
- 10 W RMS total output power

Enjoy your music from multiple sources

- DualDock to charge and play Apple devices (Lightning and 30-pin)
- DAB and FM compatible for a complete radio experience
- USB Direct for easy MP3 music playback
- Play MP3-CD, CD and CD-R/RW
- Digital tuning with preset stations for extra convenience
- Audio-in for portable music playback

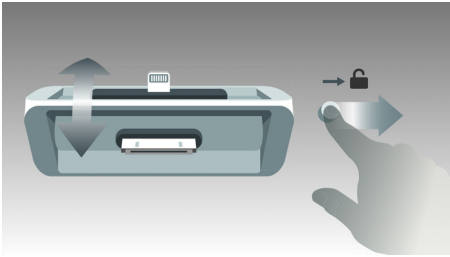
Design that blends into your interior

- Wall-mountable option for flexible placement
- Compact design fits any space, any lifestyle

PHILIPS

Highlights

DualDock to charge and play



The innovative Philips DualDock with Lightning and 30-pin connector can charge and play any Apple device. Created to meld sleek styling with effortless functionality, you can switch between either connector in a flash. Enjoy your favourite tunes no matter what Apple device you want to use.

Bass Reflex Speaker System



Bass Reflex Speaker System delivers a deep bass experience from a compact loudspeaker box system. It differs from a conventional loudspeaker box system in the addition of a bass pipe that is acoustically aligned to the woofer to optimise the low frequency roll-off of the system. The result is deeper controlled bass and lower distortion. The system works by causing the air mass in the bass pipe to vibrate like a conventional woofer. Combined

with the response of the woofer, the system extends the overall low frequency sounds to create a completely new dimension of deep bass.

Wall-mountable



The perfect combination of a slim and versatile design, your Philips audio system is cleverly designed to blend into your living space. The base of the audio system is a stand so the system can sit securely and nicely on any shelf or cabinet. When wall mounted you have all the same flexibility of the freestanding stand.

USB Direct for easy MP3 music



Thanks to the complete file transferability, you can easily enjoy the convenience and fun of accessing more digital music via the built-in USB Direct.

Digital Sound Control

Digital Sound Control offers you a choice of pre-set balanced, clear, powerful, warm and bright controls you can use to optimise the frequency ranges for different musical styles. Each mode uses graphic equalising technology to automatically adjust the sound balance and enhance the most important sound frequencies in your chosen music style. Ultimately, Digital Sound Control makes it easy for you get the most out of your music by precisely adjusting the sound balance to match the type of music you are playing.

DAB and FM compatible



DAB (Digital Audio Broadcasting) digital radio is a new way of broadcasting radio, in addition to FM analogue transmission, via a network of terrestrial transmitters. It provides listeners with more choices and information delivered in clear, crackle-free sound quality. The technology allows the receiver to lock on to the strongest signal it can find. With DAB digital stations there are no frequencies to remember, and sets are tuned by station name, so there is no retuning on the move.

Specifications

Sound

- Volume control: up/down
- Sound Enhancement: Digital Sound Control
- Output power (RMS): 10 W

Loudspeakers

- No. of built-in speakers: 2
- Speaker drivers: 2.75" woofer
- Speaker types: bass reflex speaker system

Audio playback

- Disc playback modes: fast forward/reverse, next/previous track search, repeat/shuffle/programme
- Playback media: CD, CD-R/RW, MP3-CD, USB flash drive
- USB Direct playback modes: fast reverse/fast forward, play/pause, previous/next, repeat, shuffle, stop
- Docking playback modes: fast forward and reverse, menu, up and down, next and previous track, play and pause

Tuner/Reception/Transmission

- Tuner bands: FM mono, FM stereo
- Station presets: 20
- Antenna: FM antenna (75 ohm)
- Tuner enhancement: auto digital tuning, auto scan, Easy set (plug and play)
- DAB/DAB+: Info display, Menu, Smart scan
- RDS: programme type, radio text, RDS clock set, station name

Connectivity

- Headphones: 3.5 mm
- USB: USB host
- Audio in (3.5 mm)

Convenience

- Alarms: CD Alarm, Radio Alarm, USB alarm

- Clock: On main display, sleep timer
- Charging device: iPad, iPhone, iPod
- Display type: LED display
- Loader type: slot

iPod compatibility

- Compatible with: iPod nano 7th generation, iPod touch 5th generation, iPod 5th generation, iPod 5th Generation, iPod 6th Generation, iPod nano 4th generation, iPod nano 5th generation, iPod nano 5th Generation, iPod nano 6th generation, iPod touch 2nd Gen 8/16/32 GB, iPod touch 3rd generation, iPod touch 4th generation

iPhone compatibility

- Compatible with: iPhone 5, iPhone, iPhone 3G, iPhone 3GS, iPhone 4, iPhone 4S, iPhone 5C, iPhone 5S

iPad compatibility

- Compatible with: iPad mini, iPad with Retina display, iPad, iPad 2, The new iPad

Power

- Power supply: 110-240V, 50/60 Hz

Accessories

- Included accessories: AC-DC Adapter, FM antenna
- Remote control: 21-key remote
- User Manual: English

Dimensions

- Set dimensions (W x D): 420 x 99 mm
- Set height (with stand): 223 mm
- Packaging width: 460 mm
- Packaging height: 142 mm
- Packaging depth: 265 mm
- Gross weight: 4.2 kg
- Net weight: 3.3 kg



Issue date 2014-08-22

Version: 1.0.5

12 NC: 8670 001 17478
EAN: 04 89518 56021 10

© 2014 Koninklijke Philips N.V.
All Rights reserved.

Specifications are subject to change without notice.
Trademarks are the property of Koninklijke Philips N.V.
or their respective owners.

www.philips.com