

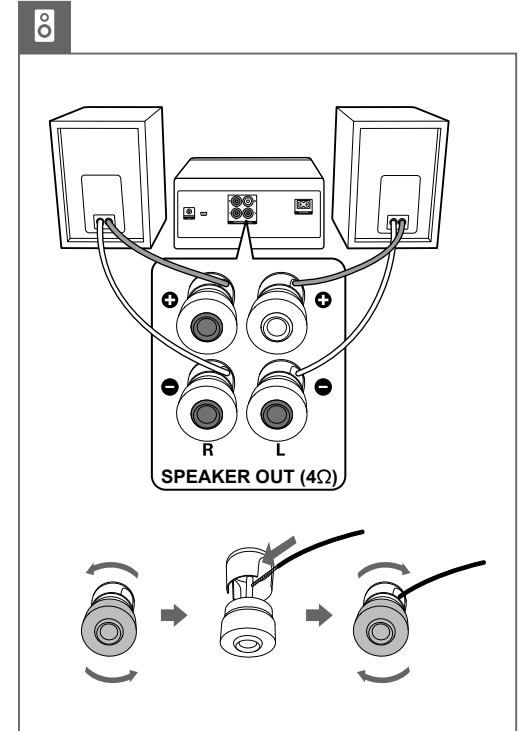
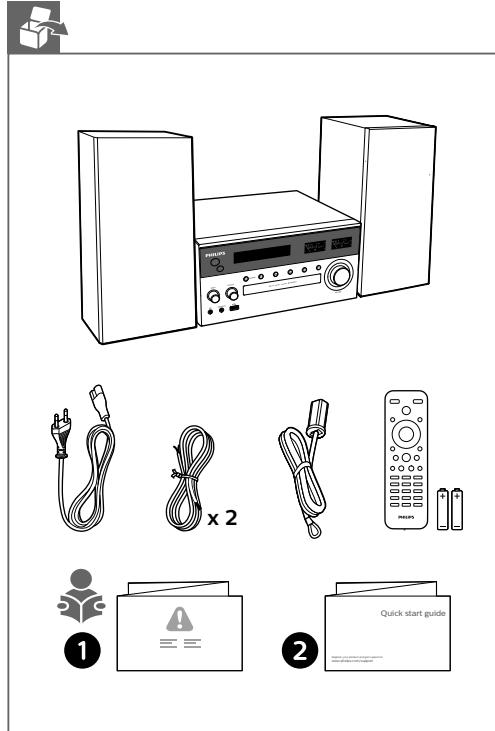
PHILIPS

Quick Start Guide

Micro music system
BTB8000



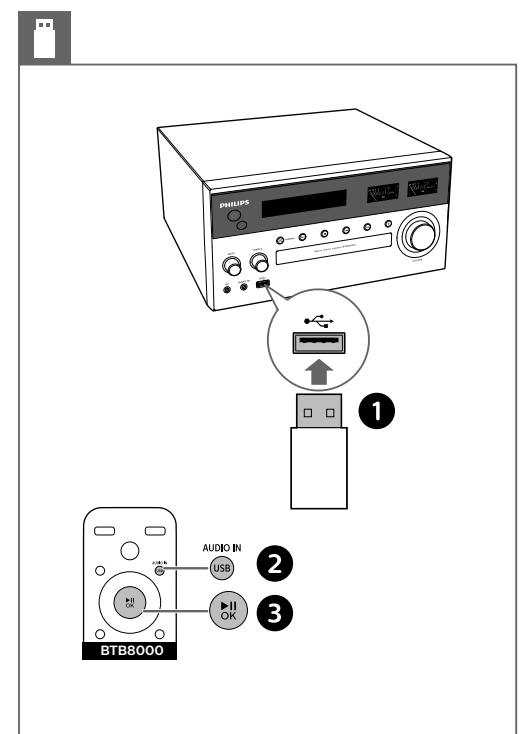
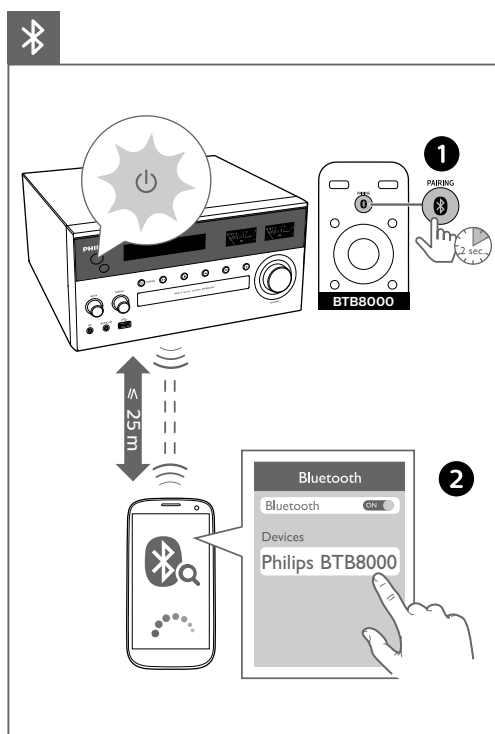
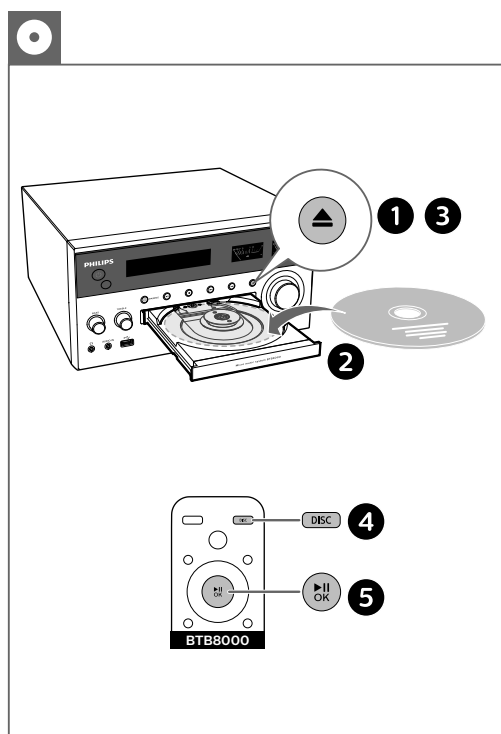
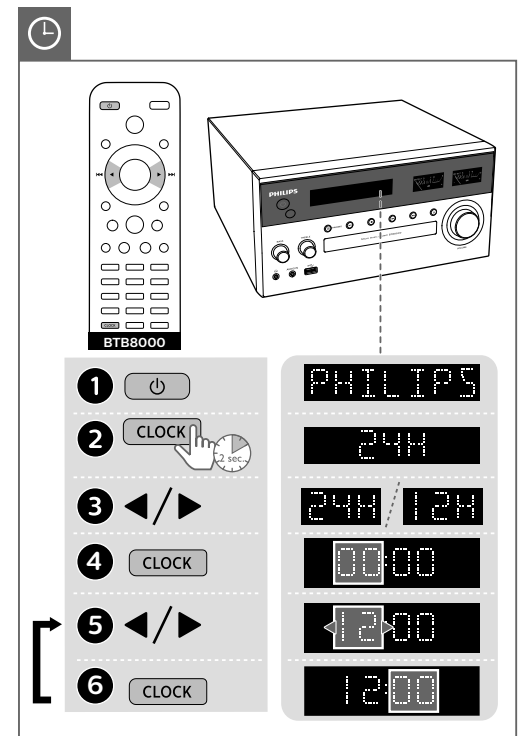
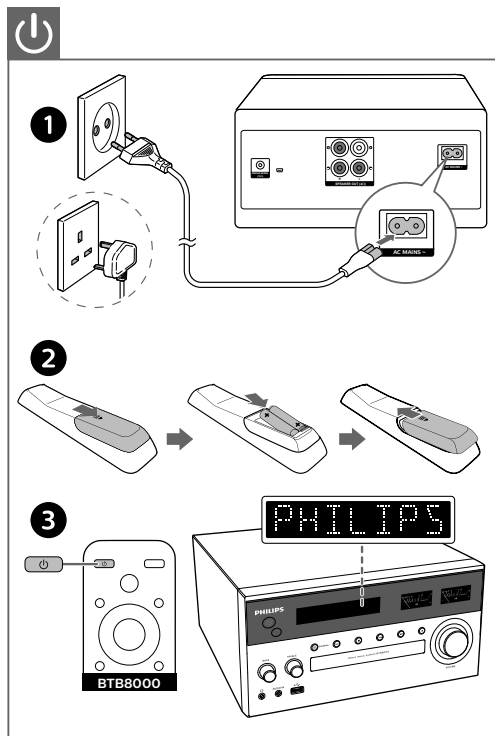
Register your product and get support at www.philips.com/support



This product has been manufactured by, and is sold under the responsibility of Gibson Innovations Ltd., and Gibson Innovations Ltd. is the warrantor in relation to this product. The Philips trademark and the Philips Shield Emblem are registered trademarks of Koninklijke Philips N.V. used under license.



BTB8000_12_QSG_V3.0



BTB8000

BTB8000

BTB8000

1 DAB
FM

2 OK

DAB

↓

PRESS OK

↓

TO SCAN

1 DAB
FM

2 A

2 B

FM

1 DAB
FM

2 SCAN
PROG

3

FM

P01

P03

BTB8000

1

2 TIMER
SLEEP

3

4 TIMER
SLEEP

00:00

08:00

08:00

5

6 TIMER
SLEEP

7

8

9 TIMER
SLEEP

00:30

FM

[CD]

VOL 3

TIMER ON

BTB8000

TIMER
SLEEP

⋮

120 MIN

↓

90 MIN

↓

60 MIN

↓

30 MIN

↓

15 MIN

↓

OFF

1

2

www.philips.com/support