

Always there to help you

Register your product and get support at
www.philips.com/support



BT4100



User manual

PHILIPS

Contents

1	Important	2
	Safety	2

2	Your Bluetooth speaker	3
	Introduction	3
	What's in the box	3
	Overview of the speaker	4

3	Get started	5
	Connect power	5
	Set time	5
	Switch to standby mode	5

4	Play from Bluetooth-enabled devices	6
	Connect a device	6
	Play from Bluetooth device	6
	Disconnect the Bluetooth-enabled device	6
	Reconnect the Bluetooth device	7
	Connect another Bluetooth-enabled device	7

5	Other features	8
	Listen to an external device	8
	Charge your mobile devices	8
	Adjust volume	8

6	Product information	9
	Specifications	9

7	Troubleshooting	10
	General	10
	About Bluetooth device	10

8	Notice	11
	Compliance	11
	Care of the environment	11
	Trademark notice	11

1 Important

Safety



Warning

- Never remove the casing of this speaker.
 - Never lubricate any part of this speaker.
 - Never place this speaker on other electrical equipment.
 - Keep this speaker away from direct sunlight, naked flames or heat.
 - Make sure that you always have easy access to the power cord, plug, or adaptor to disconnect the speaker from the power.
-
- Make sure that there is enough free space around the speaker for ventilation.
 - Only use attachments or accessories specified by the manufacturer.
 - Use only power supplies listed in the user manual.
 - The speaker shall not be exposed to dripping or splashing.
 - Do not place any sources of danger on the speaker (e.g. liquid filled objects, lighted candles).
 - Where the plug of the Direct Plug-in Adapter is used as the disconnect device, the disconnect device shall remain readily operable.



Note

- The type plate is located on the bottom of the apparatus.

2 Your Bluetooth speaker

Congratulations on your purchase, and welcome to Philips! To fully benefit from the support that Philips offers, register your product at www.philips.com/welcome.

Introduction

With this speaker, you can

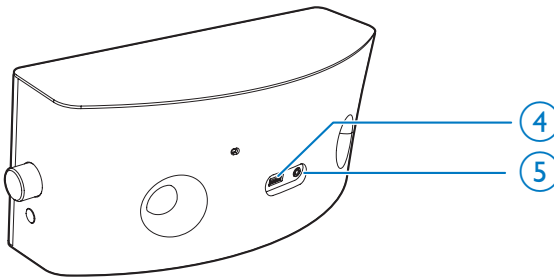
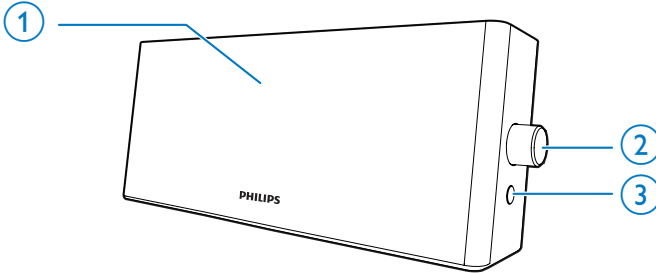
- play audio from Bluetooth-enabled devices or other external devices;
- view time; and
- charge your mobile devices.

What's in the box

Check and identify the contents of your package:

- Speaker
- Short user manual

Overview of the speaker



- ① **Display panel**
 - Display time and Bluetooth connection status.
- ② **-VOL +/SET TIME knob**
 - Adjust volume.
 - Set time.
- ③ **ⓧ**
 - Enter Bluetooth pairing mode.
 - Disconnect Bluetooth connection.
- ④ **5V \equiv 1A**
 - Charge mobile devices with a USB cable.
- ⑤ **AUDIO IN**
 - Connect an external audio device.

3 Get started

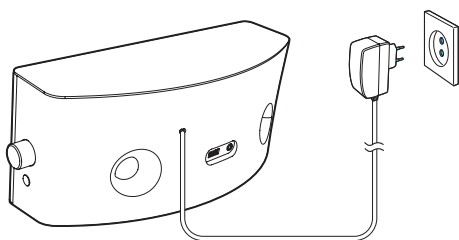
Always follow the instructions in this chapter in sequence.

Connect power

! Caution

- Risk of product damage! Make sure that the power voltage corresponds to the voltage printed on the back or underside of the speaker.
- Risk of electric shock! When you unplug the AC adapter, always pull the plug from the socket. Never pull the cord.

Connect the power adapter to the wall outlet.
↳ The Bluetooth indicator flashes on the display.



- 2 Rotate the knob to select 12 or 24 hour format.
- 3 Press the knob to confirm.
↳ The hour digits blink.
- 4 Rotate the knob to set the hour.
- 5 Press the knob to confirm.
↳ The minute digits blink.
- 6 Repeat steps 4-5 to set the minute.

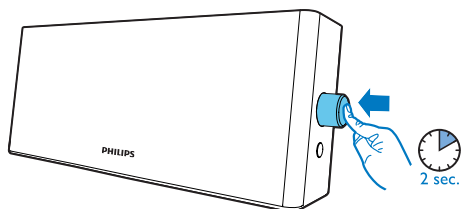
Switch to standby mode

The speaker switches to standby mode automatically in the following situations:

- The connection with Bluetooth devices or other external devices is invalid for 15 minutes; or
- Music playback is stopped for 15 minutes.

Set time

- 1 Press and hold the **SET TIME** knob for two seconds.
↳ [12HR] or [24HR] blinks on the display.



4 Play from Bluetooth-enabled devices

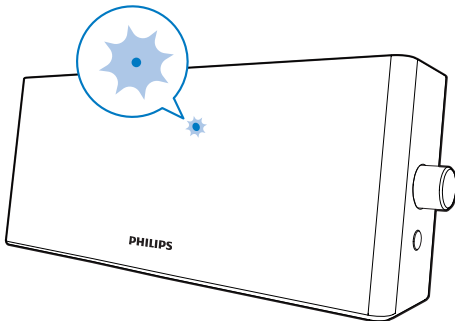
With this speaker, you can listen to audio from Bluetooth-enabled devices.

Connect a device

Note

- Make sure that your Bluetooth device is compatible with this speaker.
- Before pairing a device with this speaker, read its user manual for Bluetooth compatibility.
- The speaker can memorize a maximum of 4 paired devices. The fifth paired device will replace the first one.
- Make sure that Bluetooth function is enabled on your device, and your device is set as visible to all other Bluetooth devices.
- Any obstacle between this speaker and a Bluetooth device can reduce the operational range.
- Keep away from any other electronic device that may cause interference.
- The operational range between this speaker and a Bluetooth device is approximately 10 meters (30 feet).

- 1 Make sure that the speaker is in Bluetooth pairing mode.
 - ↳ The Bluetooth indicator flashes on the display.



- 2 On your Bluetooth device, enable Bluetooth and search for Bluetooth devices (see the user manual of the device).
- 3 Select **[Philips BT4100]** displayed on your device for pairing. If necessary, enter default password "0000".
 - ↳ If connection is successful, the speaker beeps twice, and the Bluetooth indicator turns solid blue.
 - ↳ If you fail to find **[Philips BT4100]** for pairing, press and hold **⏻** for two seconds to enter pairing mode, and then try again.

LED indicator	Description
Flashing blue	Connecting; Waiting for pairing
Solid blue	Connected

Play from Bluetooth device

After successful Bluetooth connection, play audio on the Bluetooth device.

- ↳ Audio streams from your Bluetooth device to the speaker.


Disconnect the Bluetooth-enabled device

- Press and hold **⏻** for two seconds;
- Disable Bluetooth on your device; or
- Move the device beyond the communication range.
 - ↳ The speaker beeps twice, and the Bluetooth indicator flashes.

Reconnect the Bluetooth device

- When you turn on the speaker, it reconnects the last connected device automatically;
- If not, manually select "**Philips BT4100**" on your Bluetooth device to start reconnection.

Connect another Bluetooth-enabled device

- 1 Press and hold  for two seconds to disconnect the current connection.
 - ↳ The speaker enters Bluetooth pairing mode.
- 2 Connect another Bluetooth device.

5 Other features

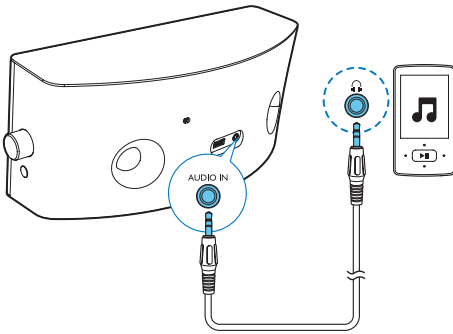
Listen to an external device

With this speaker, you can also listen to an external audio device such as an MP3 player.

Note

- Make sure that music playback through Bluetooth is stopped.

- 1 Connect an audio input cable (not supplied) with a 3.5 mm connector on both ends to
 - the **AUDIO IN** socket on this speaker; and
 - the headphone socket on the external device.
- 2 Play audio on the external device (refer to its user manual).



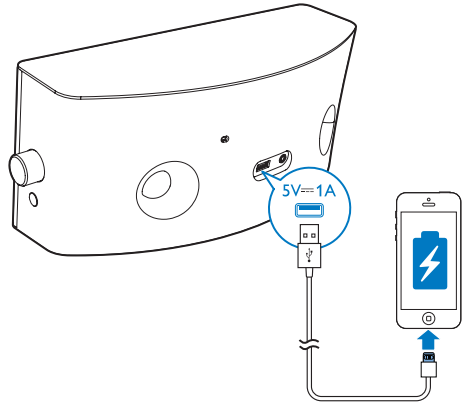
Charge your mobile devices

You can charge your mobile devices through the USB socket.

Note

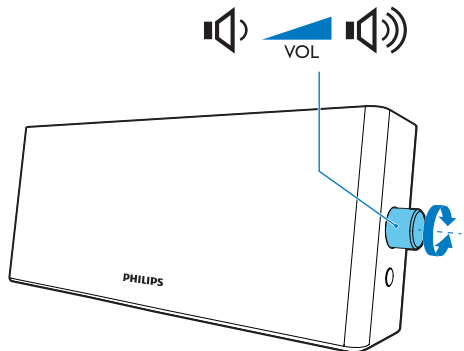
- The USB socket is for charging only.

- 1 Connect this speaker to AC power.
- 2 Connect this speaker to your mobile device with a USB cable (not supplied).
 - ↳ Once the device is recognized, the charging starts.



Adjust volume

During play, rotate the **-VOL +** knob to increase or decrease volume.



6 Product information



Note

- Product information is subject to change without prior notice.

Specifications

Amplifier

Rated Output Power	2 X 5 W RMS
Frequency Response	40 - 20000 Hz, ± 3 dB
Signal to Noise Ratio	> 65 dBA
Audio-in Input	600mV RMS 22 kohm

Bluetooth

Bluetooth Version	V4.0
Supported Profiles	A2DP, AVRCP
Operational Range	10 m (Free space)

Speaker

Speaker Impedance	4 ohm
Speaker Driver	10cm full range
Sensitivity	>84dB/m/W ± 4 dB/m/W

General information

Power Supply (power adapter)

- Brand name	PHILIPS;
- Model	TPA103B-18090-EU;
- Input	AC100-240V~, 50/60 Hz, 1.1A MAX;
- Output	9V \equiv 2 A;
Charging Voltage and Current	5V \equiv 1 A
Operation Power Consumption	12 W
Standby Power Consumption	<1 W
Dimensions - Main Unit (W x H x D)	296 x 120 x 112 mm
Weight - Main Unit	1.1 kg

7 Troubleshooting



Warning

- Never remove the casing of this device.

To keep the warranty valid, never try to repair the system yourself.

If you encounter problems when using this device, check the following points before requesting service. If the problem remains unsolved, go to the Philips Web page (www.philips.com/support). When you contact Philips, make sure that the device is nearby and the model number and serial number are available.

General

No power

- Make sure that the AC power adaptor of the device is connected properly.
- Make sure that there is power at the AC outlet.

No sound or poor sound

- Adjust volume on the product.
- Adjust volume on the connected device.

No response from the speaker

- Disconnect and reconnect the AC power plug, then try again.

Cannot charge mobile devices

- Make sure that AC power is connected properly.
- Make sure that there is power at the AC outlet.

About Bluetooth device

The audio quality is poor after connection with a Bluetooth-enabled device.

- The Bluetooth reception is poor: Move the device closer to this product or remove any obstacle between them.

Fail to find [Philips BT4100] on your device for pairing.

- Press and hold **0** for two seconds, and then try again.

Cannot connect with the device.

- The Bluetooth function of the device is not enabled. Refer to the user manual of the device for how to enable the function.
- This product is already connected with another Bluetooth-enabled device. Disconnect that device and then try again.

The paired device connects and disconnects constantly.

- The Bluetooth reception is poor: Move the device closer to this product or remove any obstacle between them.
- For some devices, Bluetooth connection may be deactivated automatically as a power-saving feature. This does not indicate any malfunction of this product.

8 Notice

Any changes or modifications made to this device that are not expressly approved by Gibson Innovations may void the user's authority to operate the equipment.

Compliance

CE 0890

Hereby, Gibson Innovations declares that this product is in compliance with the essential requirements and other relevant provisions of Directive 1999/5/EC. You can find the Declaration of Conformity on www.philips.com/support.

Care of the environment

Disposal of your old product



Your product is designed and manufactured with high quality materials and components, which can be recycled and reused.



This symbol on a product means that the product is covered by European Directive 2012/19/EU. Inform yourself about the local separate collection system for electrical and electronic products. Follow local rules and never dispose of the product with normal household waste. Correct disposal of old products

helps prevent negative consequences for the environment and human health.

Environmental information

All unnecessary packaging has been omitted. We have tried to make the packaging easy to separate into three materials: cardboard (box), polystyrene foam (buffer) and polyethylene (bags, protective foam sheet.) Your system consists of materials which can be recycled and reused if disassembled by a specialized company. Please observe the local regulations regarding the disposal of packaging materials, exhausted batteries and old equipment.

Trademark notice



The Bluetooth® word mark and logos are registered trademarks owned by Bluetooth SIG, Inc. and any use of such marks by Gibson Innovations Limited is under license. Other trademarks and trade names are those of their respective owners.

Class II equipment symbol:



CLASS II apparatus with double insulation, and no protective earth provided.



Specifications are subject to change without notice.

2015 © Gibson Innovations Limited. All rights reserved.

This product has been manufactured by, and is sold under the responsibility of Gibson Innovations Ltd., and Gibson Innovations Ltd. is the warrantor in relation to this product.

Philips and the Philips Shield Emblem are registered trademarks of Koninklijke Philips N.V. and are used under license from Koninklijke Philips N.V.

BT4100_12_UM_V1.0

