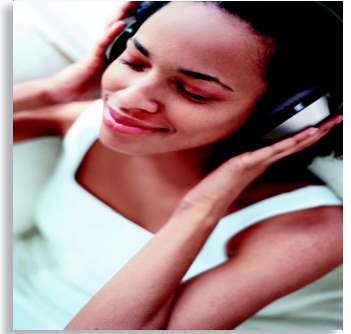




Philips
Wireless Hi-Fi Headphone



SHC8525

Superb wireless music

Freedom to enjoy music around your home. With Hi-Fi sound reproduction, this stereo headphone is the ultimate in personal convenience.

You'll forget you're wearing them!

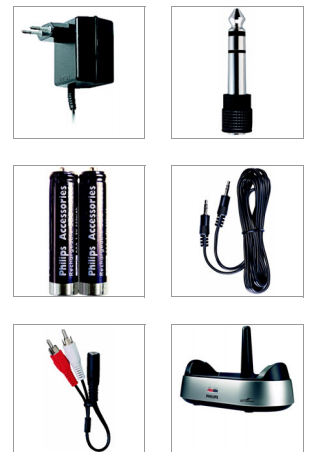
- 3-way adjustment for a better fit and bass performance
- Pre-formed ear cushions ensure a comfortable fit

The perfect wireless listening experience

- The whole ear is covered to optimise sound quality
- 40mm speaker driver delivers sound without distortion

Always ready to go

- FM Wireless transmission for freedom of movement
- Choose from 3 channels to minimise interference
- Energising docking station stores and recharges receiver



PHILIPS
sense and simplicity

Specifications

Sound

- **Acoustic system:** Closed
- **Frequency response:** 10 - 22,000 Hz
- **Magnet type:** Neodymium
- **Sensitivity:** 100 dB
- **Speaker diameter:** 40
- **Signal/noise ratio:** ~70 dB

Tuner/Reception/Transmission

- **Pilot tone frequency:** 19 kHz
- **Effective range:** 100 m
- **Carrier frequency range:** 863.0 - 865.0 MHz
- **Channel separation:** > 30 dB
- **Modulation:** FM
- **Number of channels:** 3

Convenience

- **Battery charging indication**
- **Automatic power off**
- **Operating time:** +/- 15 hours

- **Battery low indication**
- **Double PLL**

Electricity

- **Power supply headphone:** 2 x 1.5 V NiMH R03/AAA
- **Power supply transmitter:** AC/DC adapter 12 V/200 mA

Outer Box

- **Gross weight:** 6.944 lb
- **Outer carton (L x W x H):** 10.7 x 9.9 x 13.5 inch
- **Net weight:** 3.558 lb
- **Tare weight:** 3.386 lb

Packaging dimensions

- **Packaging dimensions (W x H x D):** 9.1 x 11.9 x 4.9 inch
- **Gross weight:** 2.734 lb
- **Net weight:** 1.779 lb
- **Tare weight:** 0.955 lb

Product highlights

3-way adjustable ear shells

Enjoy a comfortable fit and experience better bass performance thanks to the three-way adjustable ear shells that fit naturally around your ears.

Ergonomic design ear cushions

The ergonomic three-dimensional ear cushion shape evenly distributes the load for a better and more comfortable fit.

Full-size design

Full-size ear shells not only cover your whole ear for better sound quality, but also provide space for a larger, higher performance driver.

40 mm speaker driver

The 40 mm speaker driver is made of a composite Mylar material for a highly sensitive yet powerful element that delivers sound without audible distortion.

FM Wireless transmission

With high-frequency FM wireless transmission, which can even pass through walls, you can even listen to your music when you're in another room.

3 transmission channels

With a choice of three transmission channels, your listening pleasure is assured because you can easily switch to the one with the best reception.

Energising docking station

The docking station is the most convenient way to store your receiver when not in use. At the same time, it will recharge your receiver unit and have it ready for use at any moment.



Issue date 2008-09-16

Version: 3.0.3

12 NC: 9082 100 07822
UPC: 6 09585 11182 0

© 2008 Koninklijke Philips Electronics N.V.
All Rights reserved.

Specifications are subject to change without notice.
Trademarks are the property of Koninklijke Philips Electronics N.V. or their respective owners.

www.philips.com