

Register your product and get support at
www.philips.com/welcome

HTS3531



PHILIPS

Contents

1	Notice	4
	Copyright	4
	Compliance	4
	Trademarks	4

2	Important	5
	Safety	5
	Care for your product	5
	Care of the environment	6

3	Your home theater	6
	Main unit	6
	Remote control	7

4	Connect your home theater	8
	Speakers	8
	Connectors	9
	Connect to TV	10
	Connect audio from TV and other devices	11

5	Use your home theater	12
	Choose sound	12
	Discs	12
	USB storage devices	13
	DivX	14
	Karaoke	14
	Audio, video, and picture options	15
	Radio	16
	MP3 player	17
	Create MP3 files	17
	EasyLink	18

6	Change settings	19
	Picture	19
	Sound	19
	Language	20
	Parental control	20
	Energy saving	21
	Apply factory settings	21

7	Update software	22
	Check software version	22
	Update software through USB or CD-R	22

8	Product specifications	23
----------	-------------------------------	----

9	Troubleshooting	24
----------	------------------------	----

10	Index	26
-----------	--------------	----

1 Notice

This section contains the legal and trademark notices.

Copyright



This item incorporates copy protection technology that is protected by U.S. patents and other intellectual property rights of Rovi Corporation. Reverse engineering and disassembly are prohibited.

Compliance



This product is in compliance with the essential requirements and other relevant provisions of Directives 2006/95/EC (Low Voltage), 2004/108/EC (EMC).

Trademarks



Manufactured under license from Dolby Laboratories. Dolby and the double-D symbol are registered trademarks of Dolby Laboratories.



DivX[®], DivX Certified[®] and associated logos are registered trademarks of DivX, Inc. and are used under license.

ABOUT DIVX VIDEO: DivX[®] is a digital video format created by DivX, Inc. This is an official DivX Certified[®] device that plays DivX video. Visit divx.com for more information and software tools to convert your files into DivX video.

ABOUT DIVX VIDEO-ON-DEMAND: This DivX Certified[®] device must be registered in order to play purchased DivX Video-on-Demand (VOD) movies. To obtain your registration code, locate the DivX VOD section in your device setup menu. Go to vod.divx.com for more information on how to complete your registration.



HDMI, and HDMI logo, and High-Definition Multimedia Interface are trademarks or registered trademarks of HDMI licensing LLC in the United States and other countries.



2 Important

Read and understand all instructions before you use your home theater. If damage is caused by failure to follow instructions, the warranty does not apply.

Safety

Risk of electric shock or fire!

- Never expose the product and accessories to rain or water. Never place liquid containers, such as vases, near the product. If liquids are spilt on or into the product, disconnect it from the power outlet immediately. Contact Philips Consumer Care to have the product checked before use.
- Never place the product and accessories near naked flames or other heat sources, including direct sunlight.
- Never insert objects into the ventilation slots or other openings on the product.
- Where the mains plug or an appliance coupler is used as the disconnect device, the disconnect device shall remain readily operable.
- Disconnect the product from the power outlet before lightning storms.
- When you disconnect the power cord, always pull the plug, never the cable.

Risk of short circuit or fire!

- Before you connect the product to the power outlet, ensure that the power voltage matches the value printed on the back or bottom of the product. Never connect the product to the power outlet if the voltage is different.

Risk of injury or damage to the home theater!

- For wall-mountable products, use only the supplied wall mount bracket. Secure the wall mount to a wall that can support the combined weight of the product and the wall mount. Koninklijke Philips Electronics N.V. bears no responsibility for improper wall mounting that results in accident, injury or damage.
- For speakers with stands, use only the supplied stands. Secure the stands to the speakers tightly. Place the assembled stands on flat, level surfaces that can support the combined weight of the speaker and stand.

- Never place the product or any objects on power cords or on other electrical equipment.
- If the product is transported in temperatures below 5°C, unpack the product and wait until its temperature matches room temperature before connecting it to the power outlet.
- Visible and invisible laser radiation when open. Avoid exposure to beam.
- Do not touch the disc optical lens inside the disc compartment.
- Parts of this product can be made of glass. Handle with care to avoid injury and damage.

Risk of overheating!

- Never install this product in a confined space. Always leave a space of at least four inches around the product for ventilation. Ensure curtains or other objects never cover the ventilation slots on the product.

Risk of contamination!

- Do not mix batteries (old and new or carbon and alkaline, etc.).
- Remove batteries if they are exhausted or if the remote control is not to be used for a long time.
- Batteries contain chemical substances, they should be disposed of properly.

Risk of swallowing batteries!

- The product/remote control may contain a coin type battery, which can be swallowed. Keep the battery out of reach of children at all times!

Care for your product

- Do not insert any objects other than discs into the disc compartment.
- Do not insert warped or cracked discs into the disc compartment.
- Remove discs from the disc compartment if you are not using the product for an extended period of time.
- Use only microfiber cloth to clean the product.

Care of the environment



Your product is designed and manufactured with high quality materials and components, which can be recycled and reused.



When this crossed-out wheeled bin symbol is attached to a product it means that the product is covered by the European Directive 2002/96/EC. Please inform yourself about the local separate collection system for electrical and electronic products.

Please act according to your local rules and do not dispose of your old products with your normal household waste.

Correct disposal of your old product helps to prevent potential negative consequences for the environment and human health.



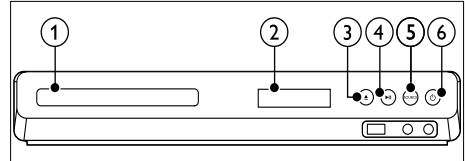
Your product contains batteries covered by the European Directive 2006/66/EC, which cannot be disposed with normal household waste.

Please inform yourself about the local rules on separate collection of batteries because correct disposal helps to prevent negative consequences for the environmental and human health.

3 Your home theater

Congratulations on your purchase, and welcome to Philips! To fully benefit from the support that Philips offers, register your home theater at www.philips.com/welcome.

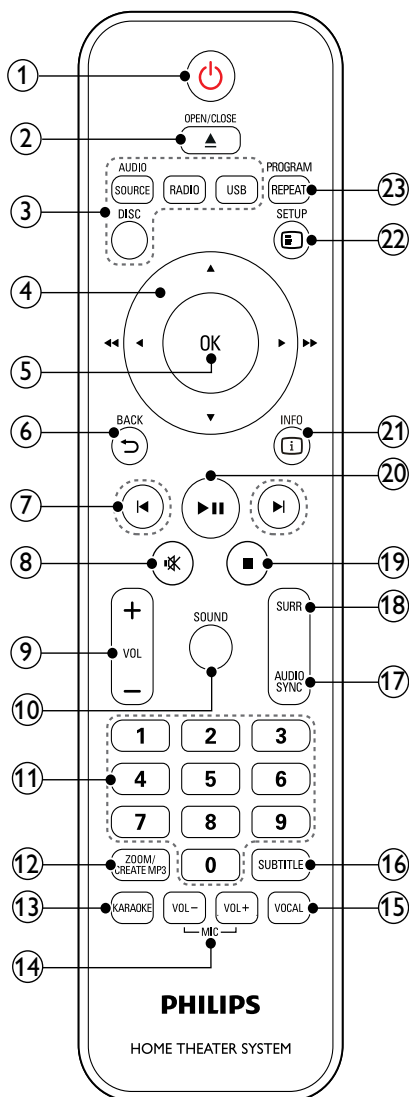
Main unit



- ① **Disc compartment**
- ② **Display panel**
- ③ **▲ (Open/Close)**
Open or close the disc compartment, or eject the disc.
- ④ **▶|| (Play/Pause)**
Start, pause or resume play.
- ⑤ **SOURCE**
Select an audio or video source for the home theater.
- ⑥ **⏻ (Standby-On)**
Switch the home theater on or to standby.

Remote control

This section includes an overview of the remote control.



- ① **⏻ (Standby-On)**
 - Switch the home theater on or to standby.
 - When EasyLink is enabled, press and hold for at least three seconds to switch all connected HDMI CEC compliant devices to standby.
- ② **▲ (Open/Close)**

Open or close the disc compartment, or eject the disc.
- ③ **Source buttons**
 - **DISC:** Switch to disc source. Access or exit the disc menu when you play a disc.
 - **AUDIO SOURCE:** Select an audio input source.
 - **RADIO:** Switch to FM radio.
 - **USB:** Switch to USB storage device.
- ④ **Navigation buttons**
 - Navigate menus.
 - In video mode, press left or right to fast backward or fast forward; press up or down to slow backward or slow forward.
 - In radio mode, press left or right to search a radio station; press up or down to fine tune a radio frequency.
- ⑤ **OK**

Confirm an entry or selection.
- ⑥ **↶ BACK**

Return to a previous menu screen.
- ⑦ **◀ / ▶ (Previous/Next)**
 - Skip to the previous or next track, chapter or file.
 - In radio mode, select a preset radio station.
- ⑧ **🔇 (Mute)**

Mute or restore volume.
- ⑨ **VOL +/-**

Increase or decrease volume.
- ⑩ **SOUND**

Select a sound mode.
- ⑪ **Numeric buttons**

Select an item to play.
- ⑫ **CREATE MP3/ZOOM**
 - Access the create MP3 menu.
 - Zoom into a video scene or picture. Press the **Navigation buttons** (left/right) to select a zoom factor.

- 13 **KARAOKE**
Access karaoke options.
- 14 **MIC VOL +/-**
Increase or decrease the microphone volume.
- 15 **VOCAL**
Turn the vocals on or off.
- 16 **SUBTITLE**
Select subtitle language for video.
- 17 **AUDIO SYNC**
 - Select an audio language or channel.
 - Press and hold to access audio delay setting, then press +/- to delay the audio to match the video.
- 18 **SURR**
Select surround sound or stereo sound.
- 19 **■ (Stop)**
Stop play.
- 20 **▶|| (Play/Pause)**
Start, pause or resume play.
- 21 **ℹ INFO**
Access more play options while playing a disc or a USB storage device.
- 22 **⊞ SETUP**
Access or exit the setup menu.
- 23 **REPEAT/PROGRAM**
 - Select or turn off repeat mode.
 - In radio mode, set a radio station.

EasyLink controls

With Easylink, you can control your home theater and the TV with the following buttons on your home theater remote control (see 'EasyLink' on page 18).

- **⏻ (Standby-On)**: Press and hold to switch your home theater, TV and the connected devices to standby.
- **▶|| (Play/Pause)**: When a video disc is in the disc compartment, wake up the TV from standby, and then play a disc.

4 Connect your home theater

This section helps you connect your home theater to a TV and other devices.

For information about the basic connections of your home theater and accessories, see the quick start guide. For a comprehensive interactive guide, see www.connectivityguide.philips.com.

Note

- For identification and supply ratings, refer to the type plate at the back or bottom of the product.
- Before you make or change any connections, make sure that all devices are disconnected from the power outlet.

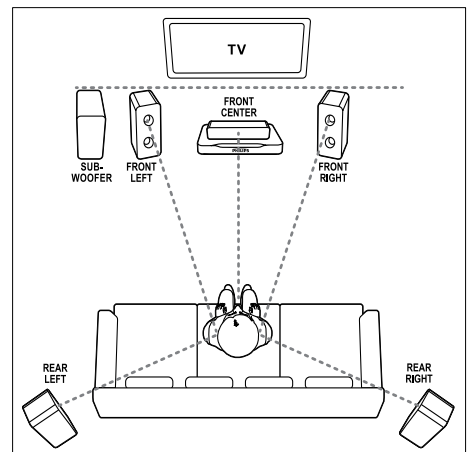
Speakers

Position, connect, and set up your speakers for best surround sound.

Position

Speaker position plays a critical role in setting up a surround sound effect.

For best results, place your speakers and the subwoofer as shown below.



Note

- Surround sound depends on factors such as room shape and size, type of wall and ceiling, windows and reflective surfaces, and speaker acoustics. Experiment with the speaker positions to find the optimum setting for you.

Follow these general guidelines, and then set up your speakers.

- Seating position:**
This is the center of your listening area.
- FRONT CENTER** (front center) speaker:
Place the center speaker directly in front of the seating position, either above or below your TV. Make sure that it is close to your ear height when you are seated.
- FRONT LEFT** (front left) and **FRONT RIGHT** (front right) speakers:
Place the left and right speakers in the front, and equidistant from the center speaker in an arc, so that all the three speakers are at same distance from your seating position. For best effect, point the speakers towards the seating position and place the speakers close to the ear level (when seated).
- REAR LEFT** (rear left) and **REAR RIGHT** (rear right) speakers:
Place the rear surround speakers to the left and right side of your seating position, either in line with it or slightly behind it. For best effect, point the speakers towards the seating position and place the speakers just above the ear level (when seated).
- SUBWOOFER** (subwoofer):
Place the subwoofer at least one meter to the left or right of the TV. Leave about ten centimeter clearance from the wall.

Connect

Connect your speakers and the subwoofer to your home theater as described in the quick start guide.

Setup

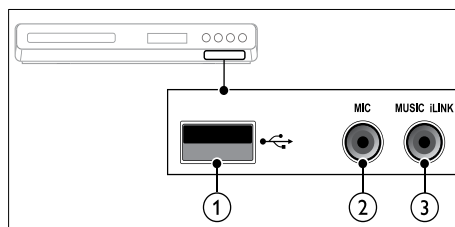
Set up your speakers through the speaker setup menu.

- Connect your speakers and subwoofer as described in the Quick start guide.
- Turn on your TV, and switch to the correct source for the home theater.
- Press **SETUP** on your home theater remote control.
- Select **[Audio Setup]**, and then press **OK**.
- Change the following settings, and then press **OK**.
 - [Speakers Volume]:** Set the volume level of each speaker.
 - [Speakers Delay]:** Set the delay time for speakers which are placed closer to the seating position in order to obtain equal audio transmission from all the speakers.

Connectors

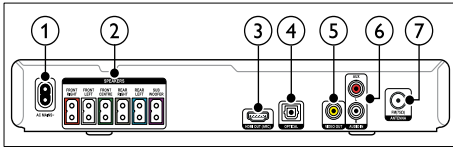
Connect other devices to your home theater.

Front



- USB**
Audio, video or picture input from a USB storage device.
- MIC**
Audio input from a microphone.
- MUSIC iLINK**
Audio input from an MP3 player.

Back connectors



- 1 AC MAINS**
Connect to the power supply.
- 2 SPEAKERS**
Connect to the supplied speakers and subwoofer.
- 3 HDMI OUT**
Connect to the HDMI input on the TV.
- 4 OPTICAL**
Connect to an optical audio output on the TV or a digital device.
- 5 VIDEO OUT**
Connect to the composite video input on the TV.
- 6 AUDIO IN-AUX**
Connect to an analog audio output on the TV or an analog device.
- 7 ANTENNA FM 75 Ω**
Signal input from an antenna, cable or satellite.

Connect to TV

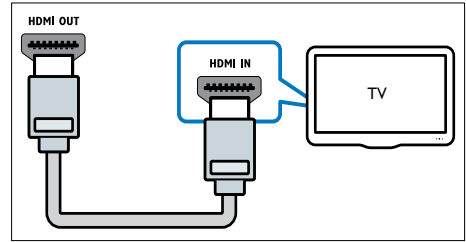
Connect your home theater to a TV to watch videos. You can listen to audio from TV programs through your home theater speakers. Use the best quality connection available on your home theater and TV.

Option 1: Connect to TV through HDMI

Best quality video

With a standard HDMI connection, you need an additional audio cable to play the audio from the TV through your home theater (see 'Connect audio from TV and other devices' on page 11).

- 1 Using a High Speed HDMI cable, connect the **HDMI OUT** connector on your home theater to the **HDMI** connector on the TV. The HDMI connector on the TV might be labeled **HDMI IN**.



- 2 On your TV, turn on HDMI-CEC. For details, see the TV user manual.
↳ When you play a disc on your home theater, the video is automatically displayed on TV and the audio is automatically played on the home theater.
- 3 To play audio from TV programs through your home theater, connect an additional audio cable (see 'Connect audio from TV and other devices' on page 11).
- 4 If audio from the TV does not play automatically on your home theater, set up the audio manually (see 'Set up audio for connected devices' on page 11).

Note

- If your TV has a DVI connector, you can use an HDMI/DVI adapter to connect to TV.

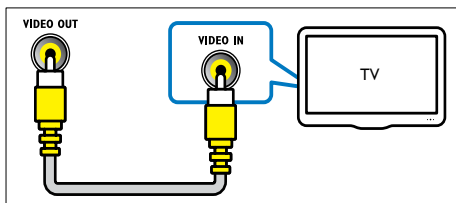
Option 2: Connect to the TV through composite video

Basic quality video

If your TV does not have HDMI connectors, connect your home theater to the TV through a composite connection. A composite connection does not support high-definition video.

With a composite connection, you need an additional audio cable to play the audio from the TV through your home theater (see 'Connect audio from TV and other devices' on page 11).

- 1 Using a composite video cable, connect the **VIDEO** connector on your home theater to the composite video connector on the TV. The composite video connector might be labeled **AV IN**, **VIDEO IN**, **COMPOSITE**, or **BASEBAND**.



- 2 On your TV, switch to the correct video input.
- 3 To play audio from TV programs through your home theater, connect an additional audio cable (see 'Connect audio from TV and other devices' on page 11).
On your home theater, press **SOURCE** repeatedly to select the correct audio input.

Connect audio from TV and other devices

Play audio from TV or other devices through your home theater.

Use the best quality connection available on your TV, home theater, and other devices.

Note

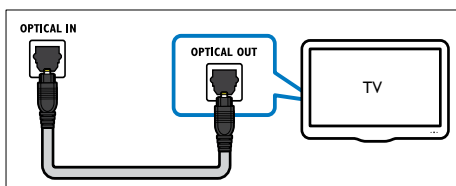
- The audio connections in this user manual are only recommendations. You can use other connections too.

Option 1: Connect audio through a digital optical cable

Best quality audio

Using an optical cable, connect the **OPTICAL** connector on your home theater to the **OPTICAL OUT** connector on the TV or other device.

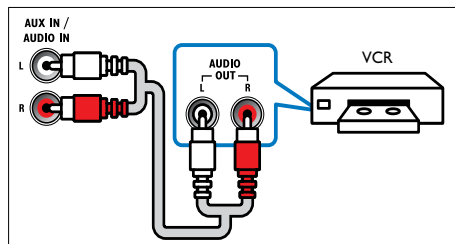
The digital optical connector might be labeled **SPDIF**, **SPDIF OUT**, or **OPTICAL**.



Option 2: Connect audio through analog audio cables

Basic quality audio

Using an analog cable, connect the **AUX** connectors on your home theater to the **AUDIO OUT** connectors on the TV or other device.



5 Use your home theater

This section helps you use the home theater to play media from a wide range of sources.

Before you start

- Make the necessary connections described in the Quick start guide and the user manual.
- Switch the TV to the correct source for the home theater.

Choose sound

This section helps you choose the ideal sound for your video or music.

Sound mode

Select predefined sound modes to suit your video or music.

- 1 Press **SOUND** repeatedly to select a sound mode.
 - **MOVIE**: Enjoy a cinematic audio experience, specially enhanced for movies.
 - **MUSIC**: Recreate the original recording environment of your music, in the studio or at a concert.
 - **ORIGINAL**: Experience the original sound of your movies and music, without added sound effects.
 - **NEWS**: Hear every word with optimized speech and clear vocals.
 - **GAMING**: Enjoy thrilling arcade sounds, ideal for action-packed video games or loud parties.

Surround sound mode

Experience an immersive audio experience with surround sound modes.

- 1 Select **SURR** repeatedly to select a surround mode.
 - **5CH STEREO**: Enhanced stereo sound. Ideal for party music.
 - **MULTI-CH**: Traditional 5.1 channels for a more relaxing cinematic experience.
 - **STEREO**: Two-channel stereo sound. Ideal for listening to music.

Discs

Your home theater can play DVDs, VCDs, and CDs. It can also play discs that you've made at home, such as CD-R discs of photos and music.

What you need

- Audio and video connection between your home theater and the TV.
- An audio or a video disc.

Play discs

- 1 Insert a disc into the home theater.
 - ↳ Your TV switches to the correct source and the disc plays automatically. If it does not, press **DISC**.
- 2 Press the play buttons to control play (see 'Play buttons' on page 13).

Play buttons

Button	Action
Navigation buttons	Navigate menus.
OK	Confirm an entry or selection.
▶ (Play/Pause)	Start, pause or resume play.
■	Stop play.
◀ / ▶	Skip to the previous or next track, chapter or file.
◀◀ / ▶▶	Fast backwards or fast forwards. Press repeatedly to change the search speed.
Navigation buttons (left/right)	Rotate the picture clockwise or counter-clockwise.
Navigation buttons (up/down)	Flip the picture vertically or horizontally.
SUBTITLE	Select subtitle language for video.
DISC	Access or exit the disc menu.
AUDIO SYNC	Select an audio language or channel.
ZOOM	Zoom into a video scene or picture.
REPEAT	Select or turn off repeat mode.
ⓘ INFO	Access the advanced options when you play your audio, video, or media files (see 'Audio, video, and picture options' on page 15).

Display menu for VCD and SVCD

Display the content menu on VCD and SVCD discs.

- 1 Press **⏏** **SETUP**.
- 2 Select **[Preference Setup]**, and then press **OK**.
- 3 Select **[PBC] > [On]**, and then press **OK**.

Note

- To skip the content menu, select **[Off]**.
- While playing a VCD/SVCD, you can press **DISC** to turn off or on the PBC (playback control).

Display menu for MP3/JPEG

You can choose how you want the MP3 contents to display.

- 1 Press **⏏** **SETUP**.
- 2 Select **[Preference Setup]**, and then press **OK**.
- 3 Select **[MP3/JPEG Display]**, and then press **OK**.
- 4 Select the following options, then press **OK**.
 - **[View Folders]**: Display the MP3 folders.
 - **[View Files]**: Display the MP3 files.

Synchronize picture and sound

If the audio and video are not synchronized, delay the audio to match the video.

- 1 Press **⏏** **SETUP**.
- 2 Select **[Audio Setup]**, and then press **OK**.
- 3 Select **[Audio Sync]**, and then press **OK**.
- 4 Press the **Navigation buttons** (left/right) to synchronize the audio with the video.
- 5 Press **OK** to confirm.

Note

- Press and hold **AUDIO SYNC** on the remote control for quick access to the audio sync setup menu.

USB storage devices

Enjoy pictures, audio and video on a USB storage device.

What you need

- A USB storage device that is formatted for FAT, and complies with the Mass Storage Class.
- A USB extension cable, if the USB storage device does not fit into the connector.

Note

- You can use digital cameras connected by USB if they can play the files without using a special computer program.

Play files

- 1 Connect the USB storage device to the home theater.
- 2 Press **USB**.
↳ A content browser is displayed.
- 3 Select a file, and then press **OK**.
- 4 Press the playback buttons to control play (see 'Play buttons' on page 13).

DivX

Play DivX videos from :

- a disc (see 'Discs' on page 12),
- a USB storage device (see 'USB storage devices' on page 13).

VOD code for DivX

Before you purchase DivX videos and play them on your home theater, register the home theater on www.divx.com using the DivX VOD code.

- 1 Press **⏏ SETUP**.
- 2 Select **[General Setup]**, and then press **OK**.
- 3 Select **[DivX(R) VOD Code]**, and then press **OK**.
↳ The DivX VOD registration code for your home theater is displayed.

Subtitles

If your video has subtitles in multiple languages, select a subtitle language.

- 1 While playing video, press **SUBTITLE** to select a language.

Note

- Make sure that the subtitle file has the same name as the video file. For example, if the video file is named 'movie.avi', save the subtitle file as 'movie.srt' or 'movie.sub'.
- Your home theater can play subtitle files in the following formats: .srt, .sub, .txt, .ssa, .ass, .smi, and .sami. These files do not appear in the file navigation menu.
- If the subtitles do not appear correctly, change the character set.

Subtitle character set

If the subtitles do not appear correctly, change the character set that supports the DivX subtitle.

- 1 Press **⏏ SETUP**.
- 2 Select **[Preference Setup]**, and then press **OK**.
- 3 Select **[DivX Subtitle]**, and then press **OK**.
- 4 Select a character set, and the press **OK**.

Character Set	Language
[Standard]	English, Albanian, Danish, Dutch, Finnish, French, Gaelic, German, Italian, Kurdish (Latin), Norwegian, Portuguese, Spanish, Swedish and Turkish
[Central Europe]	Albanian, Croat, Czech, Dutch, English, German, Hungarian, Irish, Polish, Romanian, Slovak, Slovene and Sorbian
[Cyrillic]	Bulgarian, Belorussian, English, Macedonian, Moldavian, Russian, Serbian and Ukrainian
[Greek]	Greek
[Hebrew]	Hebrew
[Chinese(Simp)]	Simplified Chinese

Karaoke

Play a Karaoke disc on your home theater and sing along with the music.

What you need

- A Karaoke microphone.
- Karaoke discs.

Note

- To prevent loud feedback or unexpected noise, turn the microphone volume to the minimum before you connect the microphone to your home theater.

Play karaoke music

- 1 Connect a karaoke microphone to the **MIC** connector on your home theater.
 - 2 Switch your TV to the correct source for your home theater.
 - 3 Play a karaoke disc.
 - 4 Press **VOCAL** to turn off the vocals and sing through the microphone.
 - 5 Press **MIC VOL +/-** to change the microphone volume.
 - 6 Press **KARAOKE** repeatedly to select a Karaoke option, the press **Navigation buttons** (left/right) and **OK** to change the settings.
 - **[Mic Off]/[Mic On]**: Turn the microphone on or off.
 - **[Vol]**: Set the default microphone volume level.
 - **[Echo]**: Change the echo level.
 - **[Key]**: Change the pitch to match your voice.
 - **[Karaoke Scoring]**: Set the karaoke scoring.
-

Audio, video, and picture options

Use advanced features when you play audio, video, or media files from a disc or a USB storage device.

Audio options

- 1 Press **INFO** repeatedly to cycle through the following options:
 - Show the current track information and time.
 - **[Off]**: Press **Navigation buttons** (left/right) to select a repeat mode.
 - **[Disc Go To]**: Skip to a specific part of the disc by entering the disc time.
 - **[Track Go To]**: Skip to a specific part of the track by entering the track time.
 - **[Select Track]**: Select a specific track.
-

Video options

- 1 Press **INFO**.
 - ↳ The video options menu is displayed.
 - 2 Press the **Navigation buttons** and **OK** to select and change:
 - **[Title]**: Select a specific title.
 - **[Chapter]**: Select a specific chapter.
 - **[Track]**: Select a specific track (for VCD/SVCD only).
 - **[Audio]**: Select audio language for video.
 - **[Subtitle]**: Select subtitle language for video.
 - **[Angle]**: Select video scenes recorded in different camera angles.
 - **[TT Time]**: Skip to a specific part of the video by entering the title time.
 - **[Ch Time]**: Skip to a specific part of the video by entering the chapter time.
 - **[Disc Time]**: Skip to a specific part of the video by entering the disc time (for VCD/SVCD only).
 - **[Track Time]**: Skip to a specific part of the video by entering the track time (for VCD/SVCD only).
 - **[Repeat AB]**: Mark two points within a chapter or track to repeat play, or turn off the repeat mode.
 - **[Preview]**: Select a content preview for disc.
 - **[Repeat]**: Select a repeat mode.
 - **[Time Disp.]**: Select the information of time display.
-

Picture options

- 1 Press **INFO** to access picture preview mode.
 - ↳ 12 thumbnail pictures are displayed.
 - 2 Press **◀ / ▶** to go to previous or next preview page.
 - 3 Press the **Navigation buttons** and **OK** to select a picture.
-

Slideshows

While playing audio, access fun features such as picture and musical slideshows.

Picture slideshows

View a slideshow of your pictures stored in your disc or a USB storage device.

- 1 Select a picture from a disc or USB storage device, and then press **▶||**.
- 2 Press **■** to stop the slideshow.

Musical slideshows

Create a musical slideshow to play music and pictures at the same time.

- 1 Select a music track, and then press **OK**.
- 2 Press **↵** **BACK**, and go to the picture folder.
- 3 Select a picture, and then press **▶** (**Play**) to start the slideshow.
- 4 Press **■** to stop slideshow.
- 5 Press **■** again to stop music.

Radio

Listen to FM radio on your home theater, and store up to 40 radio stations.

What you need

- FM antenna.

 **Note**

- AM and digital radio are not supported.
- If no stereo signal is detected, you are prompted to install the radio stations again.
- For the best reception, place the antenna away from the TV or other sources of radiation.

Tune stations

- 1 Connect the FM antenna as described in the Quick start guide.
- 2 Press **RADIO**.
 - ↳ If you have already installed the radio stations, the last channel that you listened to is played.
 - ↳ If you have not installed any radio stations, the message **AUTO INSTALL... PRESS PLAY** appears on the display panel. Press **▶** (**Play**).
- 3 Press the following buttons to listen or to change radio stations:

Button	Action
◀/▶	Select a preset radio station.
Navigation buttons (left/right)	Search for a radio station.
Navigation buttons (up/down)	Fine tune a radio frequency.
■	Press to stop the installation of radio stations. Press and hold to erase the preset radio station.
PROGRAM	Manual: Press once to access program mode, and press again to store the radio station. Automatic: Press and hold for three seconds to reinstall the radio stations.

Listen to radio

- 1 Press **RADIO**.
 - To listen to a preset station, press **◀** or **▶**.
 - To search for a radio station, and then listen, press **Navigation buttons** (left/right).
- 2 Press **+/-** (**Volume**) to change the volume.

Tuning grid

In some countries, you can toggle the FM tuning grid between 50 kHz and 100 kHz. Switching the tuning grid erases all preset radio stations.

- 1 Press **RADIO**.
- 2 Press **■**.
- 3 Press and hold **▶** (**Play**) to toggle between 50 kHz or 100 kHz.

MP3 player

Connect your MP3 player to play your audio files or music.

What you need

- An MP3 player.
- A 3.5mm stereo audio cable.

Play music

- 1 Connect the MP3 player to the home theater as described in the Quick start guide.
- 2 Press **AUDIO SOURCE** repeatedly until 'MUSIC I-LINK' appears on the display panel.
- 3 Press the buttons on the MP3 player to select and play audio files or music.

Create MP3 files

Use your home theater to convert audio CDs into MP3 files.

What you need

- An audio disc.
- A USB storage device

- 1 Connect a USB storage device to the home theater.
- 2 Play your audio CD (CDDA/HDCD).
- 3 Press **CREATE MP3**.
↳ A confirmation message is displayed.
- 4 Select **[Yes]**, and then press **OK**.
↳ The create MP3 screen is displayed. The right panel contains MP3 settings and the left panel shows the audio tracks.

CREATE MP3			
OPTIONS		TRACK	
Speed	Normal	<input type="radio"/> Track01	04:14
Bitrate	128kbps	<input type="radio"/> Track02	04:17
CRT ID3	Yes	<input type="radio"/> Track03	03:58
Device	USB1	<input type="radio"/> Track04	04:51
		<input type="radio"/> Track05	03:53
		<input type="radio"/> Track06	04:09
		<input type="radio"/> Track07	04:38
			▼
SUMMARY			
Select Track	0		
Time	00:00		
Start	Exit	Select All	Deselect All

- 5 Press the **Navigation buttons** and **OK** to select and change:
 - **[Speed]**: Select the write-to-file speed.
 - **[Bitrate]**: Select the conversion quality.
 - **[CRT ID3]**: Copy the tracks information when converting to MP3 files.
 - **[Device]**: Select the USB storage device which you use to store the MP3 files.
- 6 Navigate to the right panel, and then select the audio tracks and press **OK**.
 - To select all tracks, navigate to **[Select All]**, and then press **OK**.
- 7 Select **[Start]**, and then press **OK** to start the MP3 conversion.
 - ↳ A new folder which contains the MP3 files is created in the USB storage device.
 - To exit the menu, select **[Exit]**, and then press **OK**.

Note

- When the conversion is in process, do not press any buttons.
- DTS CDs and copy-protected CDs cannot be converted.
- Write-protected or password-protected USB storage device cannot be used to store MP3 files.

EasyLink

The home theater supports Philips EasyLink, which uses the HDMI-CEC (Consumer Electronics Control) protocol. EasyLink-compliant devices that are connected through HDMI can be controlled by a single remote control.

Philips does not guarantee 100% interoperability with all HDMI-CEC devices.

What you need

- HDMI-CEC compliant devices.
- An HDMI connection between the connected devices.

Switch on

- 1 On the TV and other connected devices, turn on the HDMI-CEC operations. For details, see the manual of the TV or other devices.
- 2 Press **SETUP**.
- 3 Select **[General Setup]**, and then press **OK**.
- 4 Select **[EasyLink Setup] > [EasyLink]**, and then press **OK**.
- 5 Select **[On]**, and then press **OK**.

Control devices

Control the home theater and the other connected HDMI-CEC compliant devices with a single remote control.

One-touch play

If you enable One-touch play, the TV automatically switches to the correct channel when you play a disc in your home theater.

One-touch standby

When you press and hold **Standby** on the remote control, the home theater and all the connected HDMI-CEC devices (that support one-touch standby) switch to the standby mode.

If one-touch standby is enabled on your home theater, you can switch to standby with the remote control of the TV or other HDMI-CEC devices.

6 Change settings

This section helps you to change the settings of your home theater.



Caution

- Most of the settings are already configured with the best value for your home theater. Unless you have a reason to change a setting, it is best to leave it at the default value.



Note

- You cannot change a setting that is grayed out.
- To return to the previous menu, press **↶**. **BACK**. To exit the menu, press **⏏** **SETUP**.

Picture

Change the picture settings to suit your preferences.



Note

- The best setting is automatically selected for the TV. If you change the setting, make sure that the TV supports the new settings.

Picture settings and format

- 1 Press **⏏** **SETUP**.
- 2 Select **[Video Setup]**, and then press **OK**.
- 3 Change the following settings, and then press **OK**:
 - **[TV System]**: For TV supported video format.
 - **[TV Display]**: For TV picture display format.
 - **[Picture Settings]**: Predefined color settings.

Picture resolution

To enjoy high definition HDMI video output, set the HDMI video settings that best match up with your TV capability.

- 1 Press **⏏** **SETUP**.
- 2 Select **[Video Setup]**, and then press **OK**.
- 3 Select **[HDMI Setup]**, and then press **OK**.
- 4 Change the following settings, and then press **OK**:
 - **[Wide Screen Format]**: For 16:9 wide screen TV display setting.
 - **[HDMI Video]**: HDMI resolution.

High definition picture

Support high definition JPEG pictures.

- 1 Press **⏏** **SETUP**.
- 2 Select **[Video Setup]**, and then press **OK**.
- 3 Select **[HD JPEG] > [On]**, and then press **OK**.

Sound

Change the sound settings to suit your preference.

HDMI audio

HDMI audio is automatically down-mixed to two channel for TV speakers. If you do not want to output audio through your TV, disable the HDMI audio.

- 1 Press **⏏** **SETUP**.
- 2 Select **[Audio Setup]**, and then press **OK**.
- 3 Select **[HDMI Audio] > [Off]**, and then press **OK**.

Language

Select a language for the home menu, audio, and subtitles.

Home menu

- 1 Press **⏏** **SETUP**.
- 2 Select **[General Setup]**, and then press **OK**.
- 3 Select **[OSD Language]**, and then press **OK**.
- 4 Select a menu language for your home theater, and then press **OK**.

Disc audio

- 1 Press **⏏** **SETUP**.
- 2 Select **[Preference Setup]**, and then press **OK**.
- 3 Select **[Audio]**, and then press **OK**.
- 4 Select an audio language for discs, and then press **OK**.

Note

- If your preferred disc language is not available, select **[Others]** from the list, and enter the 4-digit language code found at the end of this user manual.
- If you select a language that is not available on a disc, the home theater uses the default language of the disc.

Disc subtitle

- 1 Press **⏏** **SETUP**.
- 2 Select **[Preference Setup]**, and then press **OK**.
- 3 Select **[Subtitle]**, and then press **OK**.
- 4 Select a subtitle language for discs, and then press **OK**.

Disc menu

- 1 Press **⏏** **SETUP**.
- 2 Select **[Preference Setup]**, and then press **OK**.
- 3 Select **[Disc Menu]**, and then press **OK**.

- 4 Select a menu language for discs, and then press **OK**.

Note

- If your preferred disc language is not available, select **[Others]** from the list, and enter the 4-digit language code found at the end of this user manual.
- If you select a language that is not available on a disc, the home theater uses the default language of the disc.

Parental control

Restrict access to discs.

Password

You can set or change your password to play a restricted disc.

- 1 Press **⏏** **SETUP**.
- 2 Select **[Preference Setup]**, and then press **OK**.
- 3 Select **[Password]**, and then press **OK**.
↳ A change password menu is displayed.
- 4 Follow the instructions on the TV to set or change password.
 - If you do not have a password or you have forgotten, enter **0000**.
- 5 Press **OK**.

Ratings

Some discs are recorded with ratings according to age. You can set up your home theater to play only discs with an age rating lower than your child's age.

- 1 Press **⏏** **SETUP**.
- 2 Select **[Preference Setup]**, and then press **OK**.
- 3 Select **[Parental]**, and then press **OK**.
↳ A message prompts you to enter the password.
- 4 Enter the password with the **Numeric buttons**.
- 5 Select an age rating, and then press **OK**.
 - To play all discs irrespective of the rating, select level **8** or **[Off]**.

Lock disc

To restrict access to discs that are not encoded with ratings and parental control, lock the disc manually. You can lock up to 20 discs on your home theater.

- 1 While playing a disc, press **⏏** **SETUP**.
 - 2 Select **[General Setup]**, and then press **OK**.
 - 3 Select **[Disc Lock] > [Lock]**, and then press **OK**.
 - ↳ A message prompts you to enter the password.
 - 4 Enter the password with the **Numeric buttons**.
 - ↳ The disc is locked.
 - ↳ To play the locked disc, enter the password.
-

Energy saving

Save energy by changing the following settings.

Auto standby

When playing a disc or a USB storage device, automatically switch your home theater to standby if:

- it is in pause or stop mode, and
- no button is pressed for 30 minutes.

- 1 Press **⏏** **SETUP**.
 - 2 Select **[General Setup]**, and then press **OK**.
 - 3 Select **[Auto Standby] > [On]**, and then press **OK**.
-

Sleep timer

Set timers to switch the home theater to standby after a specified time.

- 1 Press **⏏** **SETUP**.
- 2 Select **[General Setup]**, and then press **OK**.
- 3 Select **[Sleep Timer]**, and then press **OK**.
- 4 Select the duration of the sleep timer.
 - ↳ The sleep timer can be set up to 60 minutes. If the sleep timer is set to **[Off]**, it switches off.
- 5 Press **OK** to activate.
 - ↳ The home theater switches to standby after the specified time.

Screen saver

Automatically switch your home theater to screen saver mode if:

- it is in pause or stop mode, and
 - no button is pressed for 10 minutes.
- 1 Press **⏏** **SETUP**.
 - 2 Select **[General Setup]**, and then press **OK**.
 - 3 Select **[Screen Saver] > [On]**, and then press **OK**.
-

Display panel

Change the brightness of the home theater display panel.

- 1 Press **⏏** **SETUP**.
 - 2 Select **[General Setup]**, and then press **OK**.
 - 3 Select **[Display Dim]**, and then press **OK**.
 - 4 Select the brightness, and then press **OK**.
-

Apply factory settings

Reset your home theater to the default settings. You cannot reset the parental control settings.

- 1 Press **⏏** **SETUP**.
- 2 Select **[Preference Setup]**, and then press **OK**.
- 3 Select **[Default]**, and then press **OK**.
- 4 Select **[OK]**, and then press **OK**.

7 Update software

To continue to get the best features and support for your home theater, update the software regularly. Compare the version of your current software with the latest version on www.philips.com/support.

Check software version

- 1 Press **[F] SETUP**.
- 2 Select **[Preference Setup]**, and then press **OK**.
- 3 Select **[Version Info.]**, and then press **OK**.
↳ The software version is displayed.

Update software through USB or CD-R

What you need

- A CD-R or a USB flash drive with at least 75MB of memory. The USB flash drive must be FAT formatted. Do not use a USB hard drive.
- A computer with Internet access.
- An archive utility that supports the ZIP file format (for example, WinZip® for Microsoft® Windows® or StuffIt® for Macintosh®).

Step 1: Download the latest software

- 1 Connect a USB flash drive or insert a CD-R to your computer.
- 2 In your web browser, go to www.philips.com/support.
- 3 At the Philips Support website, find your product and locate the **Software and drivers**.
↳ The software update is available as a zip file.
- 4 Save the zip file in the root directory of your USB flash drive or CD-R.

- 5 Use the archive utility to extract the software update file in the root directory.
↳ The files are extracted under the **UPG_ALL** folder of your USB flash drive or CD-R.
- 6 Remove the USB flash drive or CD-R from your computer.

Step 2: Update the software

Warning

- If you use a USB flash drive, make sure that there is no disc in the disc compartment, and the disc compartment is closed.

- 1 Connect the USB flash drive or insert the CD-R to your home theater.
- 2 Switch your TV to the correct source for your home theater.
- 3 Follow the instructions on the TV to complete the update.
↳ When the software update is complete, the home theater automatically switches off and restarts. If it does not, disconnect the power cord for a few seconds, and then reconnect it.

Note

- When the software update is in progress, do not turn off the power, or remove the USB flash drive or CD-R.

8 Product specifications

Note

- Specifications and design are subject to change without notice.

Region codes

The type plate on the back or bottom of the home theater shows which regions it supports.

Country	DVD
Europe, United Kingdom	
Asia Pacific, Taiwan, Korea	
Latin America	
Australia, New Zealand	
Russia, India	
China	

Media formats

- DVD-Video, DVD+R/+RW, DVD-R/-RW, DVD+R/-R DL, CD-R/CD-RW, Audio CD, Video CD/SVCD, Picture files, MP3 media, WMA media, DivX media, USB storage device

File formats

- Audio: .mp3, .wma
- Video: .avi, .divx, .mpg, .mpeg,
- Picture: .jpg, .jpeg

Amplifier

- Total output power: 300W RMS (30% THD)
- Frequency response: 20 Hz-20 kHz / ± 3 dB
- Signal-to-noise ratio: > 65 dB (CCIR) / (A-weighted)
- Input sensitivity:
 - AUX: 2 V
 - Music iLink: 1 V

Video

- Signal system: PAL / NTSC
- HDMI output: 480i/576i, 480p/576p, 720p, 1080i, 1080p

Audio

- S/PDIF Digital audio input:
 - Optical: TOSLINK
- Sampling frequency:
 - MP3: 32 kHz, 44.1 kHz, 48 kHz
 - WMA: 44.1 kHz, 48 kHz
- Constant bit rate:
 - MP3: 32 kbps - 320 kbps
 - WMA: 64 kbps - 192 kbps

Radio

- Tuning range:
 - Europe/Russia/China: FM 87.5-108 MHz (50 kHz)
 - Asia Pacific/Latin America: FM 87.5-108 MHz (50/100 kHz)
- Signal-to-noise ratio: FM 50 dB
- Frequency response: FM 200 Hz-12.5 kHz / ± 6 dB

USB

- Compatibility: Hi-Speed USB (2.0)
- Class support: USB Mass Storage Class (MSC)
- File system: FAT16, FAT32
- Maximum memory support: < 160 GB

Main unit

- Power supply:
 - Europe/China/Russia/India: 220-240V~, 50 Hz

- Latin America/Asia Pacific: 110-240V~, 50-60 Hz
- Power consumption: 55 W
- Standby power consumption: ≤ 0.9 W
- Dimensions (WxHxD): 360 x 58 x 325 mm
- Weight: 2.3 kg

Subwoofer

- Output power: 50 W RMS (30% THD)
- Impedance: 4 ohm
- Speaker drivers: 133 mm (5.25") woofer
- Dimensions (WxHxD): 160 x 265 x 265 mm
- Weight: 2.50 kg
- Cable length: 3 m

Speakers

Center speaker:

- Output power: 50 W RMS (30% THD)
- System: 1 x 63.5 mm (2.5") full range
- Speaker impedance: 4 ohm
- Speaker drivers: 1 x 63.5 mm (2.5") woofer
- Dimensions (WxHxD): 159 x 84.5 x 80 mm
- Weight: 0.35 kg
- Cable length: 2 m

Front/Rear speaker:

- Output power: 4 x 50 W RMS (30% THD)
- Speaker impedance: 4 ohm
- Speaker drivers: 1 x 63.5 mm (2.5") full range
- Dimensions (WxHxD): 84.5 x 159 x 80mm
- Weight (front): 0.35 kg/each
- Weight (rear): 0.35 kg/each
- Cable length (front): 3 m
- Cable length (rear): 7 m

Remote control batteries

- 2 x AAA-R03-1.5 V

Laser

- Type: Semiconductor laser GaAlAs (CD)
- Wave length: 645 - 665 nm (DVD), 770 - 800 nm (CD)
- Output power: 6 mW (DVD), 7 mW (VCD/CD)
- Beam divergence: 60 degrees.

9 Troubleshooting



Warning

- Risk of electric shock. Never remove the casing of the product.

To keep the warranty valid, never try to repair the product yourself.

If you have problems using this product, check the following points before you request service. If you still have a problem, register your product and get support at www.philips.com/welcome.

Main unit

The buttons on the home theater do not work.

- Disconnect the home theater from the power supply for a few minutes, then reconnect.

Picture

No picture.

- Make sure that the TV is switched to the correct source for the home theater.
- If this happens when you change the TV system, press **▲** to open the disc compartment, and then **3** on the remote control to restore the default TV system..

No picture on a TV connected through HDMI.

- Make sure that the HDMI cable is not faulty. If it is faulty, replace it with a new cable.
- Press **▲** to open the disc compartment, and then **1** on the remote control to restore the default picture resolution.
- Wait for 10 seconds for auto recovery, or change the HDMI video setting (see 'Picture resolution' on page 19).

Disc does not play high-definition video.

- Make sure that the disc contains high-definition video.
- Make sure that the TV supports high-definition video.
- Use an HDMI cable to connect to the TV.

Sound

No sound from home theater speakers.

- Connect the audio cable from your home theater to your TV or other devices (see 'Connect audio from TV and other devices' on page 11).
- Set up the audio for the connected device (see 'Set up audio for connected devices' on page 11).
- Reset your home theater to its factory settings (see 'Apply factory settings' on page 21), then switch it off and switch ON again.
- On your home theater, press **SOURCE** repeatedly to select the correct audio input.

Distorted sound or echo.

- If you play audio from the TV through the home theater, make sure that the TV is muted.

Audio and video are not synchronized.

- 1) Press and hold **AUDIO SYNC**. 2) Press **+/-** within five seconds to synchronize the audio with the video.

Play

Cannot play a disc.

- Clean the disc.
- Make sure that the home theater supports the type of disc (see 'Media formats' on page 23).
- Make sure that the home theater supports the region code of the disc (see 'Region codes' on page 23).
- If the disc is a DVD±RW or DVD±R disc, make sure that it is finalized.

Cannot play a DivX file.

- Make sure that the DivX file is encoded according to the 'Home Theater Profile' with the DivX encoder.
- Make sure that the DivX file is complete.

DivX subtitles do not display correctly.

- Make sure that the subtitle file name is the same as the movie file name (see 'Subtitles' on page 14).
- Select the correct character set: 1) Press **⏏** **SETUP**. 2) Select **[Preference Setup]** > **[DivX Subtitle]**. 3) Select the supported character set. 4) Press **OK**.

Cannot read the contents of a USB storage device.

- Make sure that the format of the USB storage device is compatible with the home theater.
- Make sure that the file system on the USB storage device is supported by the home theater.

'No entry' or 'x' sign appears on the TV.

- The operation is not possible.

EasyLink does not work.

- Make sure that the home theater is connected to a Philips brand EasyLink TV, and the EasyLink option is on (see 'EasyLink' on page 18).

When you switch on the TV, the home theater automatically switches on.

- This behavior is normal when you are using Philips EasyLink (HDMI-CEC). To make the home theater work independently, switch off EasyLink.

10 Index

A	
amplifier	23
audio	
HDMI audio	19
predefined modes	12
quality	11
settings	19
source	11
speaker setup	9
specifications	23
audio language	20
audio options	15
auto standby	21
<hr/>	
B	
brightness	21
<hr/>	
C	
care	
environment	6
product	5
connect	
audio (analog cable)	11
audio (optical cable - digital)	11
audio from TV and other devices	11
speakers	9
TV (Composite)	10
TV (HDMI)	10
connectors	
front connectors	9
control	
disc play	13
Easylink (HDMI-CEC)	8
main unit	6
parental control	20
radio	16
copyright protection	4
create MP3	17
<hr/>	
D	
disable	
HDMI-CEC	18
discs	
audio language	20
audio options	15
control buttons	13
DivX	14
lock/unlock	21
menu language	20
options	15
picture	16
play	12
subtitle	20
synchronize picture and sound	13
time search	15
titles	15
display	
MP3/JPEG menu	13
VCD/SVCD menu	13
display panel	6
DivX	
character set	14
subtitles	14
VOD code	14
<hr/>	
E	
EasyLink (HDMI-CEC)	
control buttons	8
one-touch play	18
one-touch standby	18
play audio	18
enable	
auto standby	21
HDMI-CEC	18
screen saver	21
energy	
auto standby	21
brightness	21
screen saver	21
sleep timer	21
<hr/>	
F	
factory settings	21
FM antenna	10
<hr/>	
H	
HDMI	
audio	19
video settings	19
HDMI-CEC	18
<hr/>	
K	
karaoke	14

L		
language		
audio	20	
disc menu	20	
onscreen menu	20	
subtitle	20	
M		
main unit		
overview	6	
specifications	23	
troubleshooting	24	
manually setup speakers	9	
media formats	23	
MP3		
connector	9	
create MP3	17	
display contents	13	
play	17	
N		
night mode	12	
O		
one-touch play	18	
one-touch standby	18	
options		
picture	15	
overview		
connectors	9	
HDMI-CEC	18	
main unit	6	
remote control	7	
settings	19	
speaker setup	9	
P		
parental control		
lock disc	21	
password	20	
ratings	20	
password	20	
Philips Easylink	18	
picture		
high resolution JPEG	19	
options	15	
rotate	15	
settings	19	
slideshow	15	
troubleshooting	24	
zoom	15	
picture options	15	
play		
discs	12	
MP3	17	
radio	23	
slideshow	15	
troubleshooting	25	
USB	13	
position		
connectors	9	
position	8	
preference		
audio	19	
auto standby	21	
change password	20	
disc menu	20	
display panel	21	
menu language	20	
screen saver	21	
sleep timer	21	
subtitle	20	
product specifications	23	
R		
radio		
control buttons	16	
FM antenna	10	
listen to radio	16	
specifications	23	
tune stations	16	
tuning grid	16	
ratings	20	
recycling	6	
region codes	23	
remote control		
batteries	24	
overview	7	
repeat	15	

S	
safety	
disposal	6
use of the product	5
screen saver	21
settings	
audio	19
auto standby	21
default	21
disc language	20
HDMI audio	19
HDMI video	19
HDMI-CEC	18
menu language	20
parental rating	20
password	20
picture	19
power	21
restore	21
screen saver	21
sleep timer	21
subtitle language	20
video	19
setup speakers	
manually	9
sleep timer	21
slideshows	
musical	16
picture	16
software	
check current version	22
update	22
sound	
predefined sound mode	12
surround sound	12
synchronize picture and sound	13
troubleshooting	25
speakers	
connect	9
manual setup	9
position	8
setup	9
specifications	24
surround sound	12
subtitle	
character set	14
language	20
subwoofer	
specifications	24
synchronize picture and sound	13

T	
time search	15
titles	15
trademarks	4
troubleshooting	
connection	24
main unit	24
picture	24
play	25
sound	25
tuning grid	16

U	
update software	
check current version	22
update	22
USB	
format	23
USB storage device	
options	15
play	14
specifications	23

V	
video	
picture settings	19
synchronize picture and sound	13
VOD code for DivX	14
video formats	23
video options	15
VOD code for DivX	14

Language Code

Abkhazian	6566
Afar	6565
Afrikaans	6570
Amharic	6577
Arabic	6582
Armenian	7289
Assamese	6583
Avestan	6569
Aymara	6589
Azerhijani	6590
Bahasa Melayu	7783
Bashkir	6665
Belarusian	6669
Bengali	6678
Bihari	6672
Bislama	6673
Bokmål, Norwegian	7866
Bosanski	6683
Brezhoneg	6682
Bulgarian	6671
Burmese	7789
Castellano, Español	6983
Catalán	6765
Chamorro	6772
Chechen	6769
Chewa; Chichewa; Nyanja	7889
中文	9072
Chuang; Zhuang	9065
Church Slavic; Slavonic	6785
Chuvash	6786
Corsican	6779
åesky	6783
Dansk	6865
Deutsch	6869
Dzongkha	6890
English	6978
Esperanto	6979
Estonian	6984
Euskara	6985
äĭĖÖĚĭ	6976
Faroese	7079
Français	7082
Frysk	7089
Fijian	7074
Gaelic; Scottish Gaelic	7168
Gallegan	7176
Georgian	7565
Gikuyu; Kikuyu	7573
Guarani	7178
Gujarati	7185
Hausa	7265
Herero	7290
Hindi	7273
Hiri Motu	7279
Hrwatski	6779
Ido	7379
Interlingua (International)	7365
Interlingue	7365
Inuktitut	7385

Inupiaq	7375
Irish	7165
Íslenska	7383
Italiano	7384
Ivrit	7269
Japanese	7465
Javanese	7486
Kalaallisut	7576
Kannada	7578
Kashmiri	7583
Kazakh	7575
Kernewek	7587
Khmer	7577
Kinyarwanda	8287
Kirghiz	7589
Komi	7586
Korean	7579
Kuanyama; Kwanyama	7574
Kurdish	7585
Lao	7679
Latina	7665
Latvian	7686
Letzeburgesch;	7666
Limburgan; Limburger	7673
Lingala	7678
Lithuanian	7684
Luxembourgish;	7666
Macedonian	7775
Malagasy	7771
Magyar	7285
Malayalam	7776
Maltese	7784
Manx	7186
Maori	7773
Marathi	7782
Marshallese	7772
Moldavian	7779
Mongolian	7778
Nauru	7865
Navaho; Navajo	7886
Ndebele, North	7868
Ndebele, South	7882
Ndonga	7871
Nederlands	7876
Nepali	7869
Norsk	7879
Northern Sami	8369
North Ndebele	7868
Norwegian Nynorsk;	7878
Occitan; Provençal	7967
Old Bulgarian; Old Slavonic	6785
Oriya	7982
Oromo	7977
Ossetian; Ossetic	7983
Pali	8073
Panjabi	8065
Persian	7065
Polski	8076
Português	8084

Pushto	8083
Russian	8285
Quechua	8185
Raeto-Romance	8277
Romanian	8279
Rundi	8278
Samoan	8377
Sango	8371
Sanskrit	8365
Sardinian	8367
Serbian	8382
Shona	8378
Shqip	8381
Sindhi	8368
Sinhalese	8373
Slovensky	8373
Slovenian	8376
Somali	8379
Sotho; Southern	8384
South Ndebele	7882
Sundanese	8385
Suomi	7073
Swahili	8387
Swati	8383
Svenska	8386
Tagalog	8476
Tahitian	8489
Tajik	8471
Tamil	8465
Tatar	8484
Telugu	8469
Thai	8472
Tibetan	6679
Tigrinya	8473
Tonga (Tonga Islands)	8479
Tsonga	8483
Tswana	8478
Türkçe	8482
Turkmen	8475
Twi	8487
Uighur	8571
Ukrainian	8575
Urdu	8582
Uzbek	8590
Vietnamese	8673
Volapuk	8679
Walloon	8765
Welsh	6789
Wolof	8779
Xhosa	8872
Yiddish	8973
Yoruba	8979
Zulu	9085

