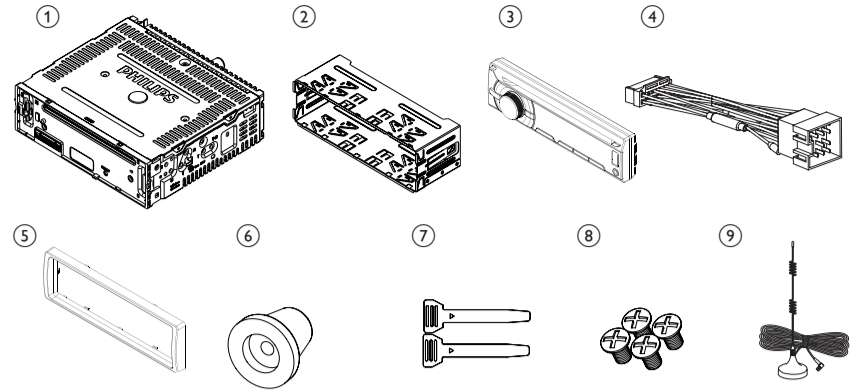


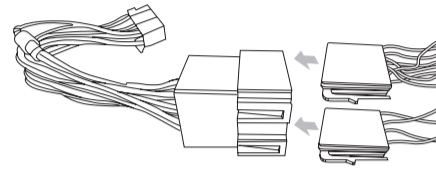


EN Quick Start Guide

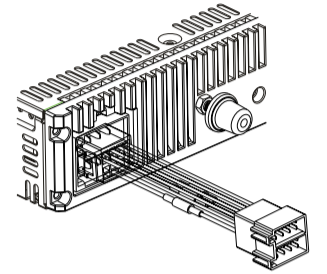
1



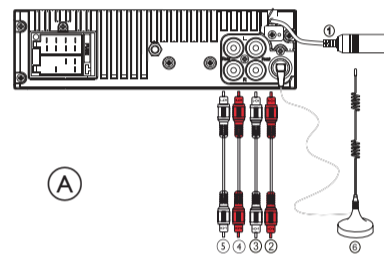
2



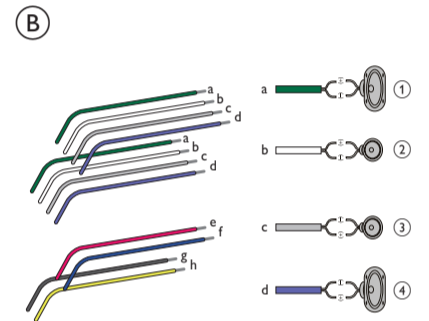
3



4

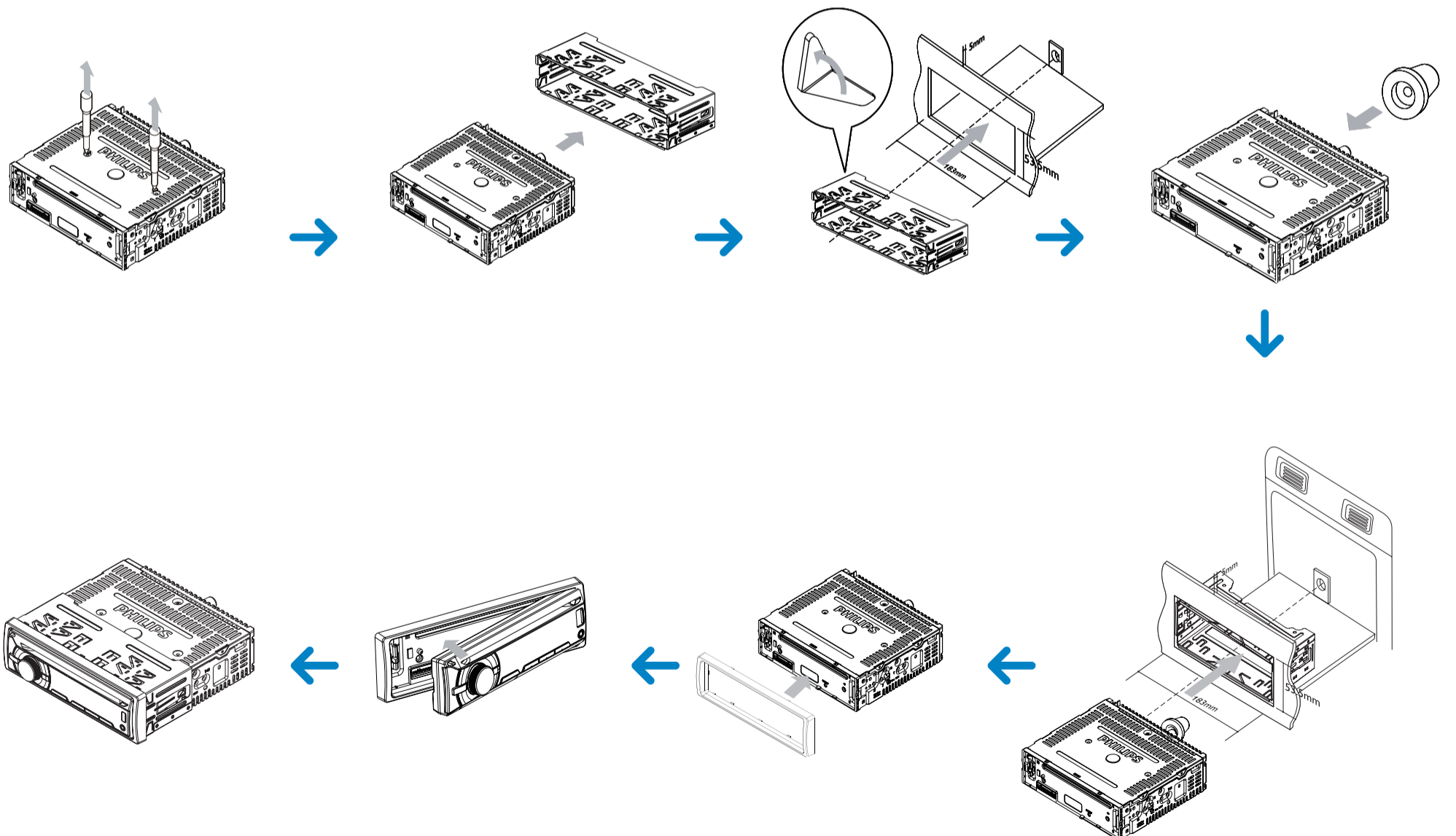


5



**PHILIPS**

6



## Overview of parts 1

These are the supplied parts needed to connect and install this unit.

- 1 In-car audio system
- 2 Sleeve
- 3 Front panel
- 4 Standard ISO connector
- 5 Trim plate
- 6 Rubber cushion
- 7 Disassembly tools
- 8 Screws (4 pieces)
- 9 DAB antenna

## Connection

### ! Caution

- Ensure that all loose leads are insulated with electrical tape.

### For cars with ISO connectors 2 3 4

- 1 Pull out the ISO connectors from car dashboard and connect them to the bigger end of the supplied standard connector.
- 2 Connect the other end of the supplied standard connector to the unit.
- 3 Connect the antenna and amplifier as illustrated, if applicable. You can connect the car audio to the amplifier through RCA-TO-RCA cables (not supplied).

Connector	Connect to
1 ANTENNA	Antenna
2 FRONT LINE OUT R (Socket)	Front right speaker
3 FRONT LINE OUT L (Socket)	Front left speaker
4 REAR LINE OUT R (Socket)	Rear right speaker
5 REAR LINE OUT L (Socket)	Rear left speaker
6 DAB Antenna	DAB Antenna

### For cars with ISO connectors 4 5

### ! Caution

- Be sure to connect the black ground (earth) lead first.

- 1 Connect the antenna and amplifier as illustrated, if applicable.
- 2 Cut off the bigger end of the supplied standard connector.
- 3 Check the car's wiring carefully and connect them to the supplied standard connector.
- 4 Connect the supplied standard connector to the unit.

1	Green/black strip	Left speaker (Rear)
2	White/black strip	Left speaker (Front)
3	Gray/black strip	Right speaker (Front)
4	Purple/black strip	Right speaker (Rear)
e	RED	Ignition key +12V DC when ON/ACC
f	BLUE	Motor/electric antenna relay control lead/Amplifier relay control lead
g	BLACK	Ground
h	YELLOW	To the +12V car battery which is energized at all times

### Mount in the dashboard 6

- 1 If the car does not have an on-board drive or navigation computer, disconnect the negative terminal of the car battery.
  - If you disconnect the car battery in a car that has an on-board drive or navigation computer, the computer may lose its memory.
  - If the car battery is not disconnected, to avoid short-circuit, ensure that bare wires do not touch each other.
- 2 Remove the two screws on the top of the unit.

- 3 Remove the mounting sleeve with the supplied disassembly tools.
- 4 Install the sleeve into the dashboard and bend the tabs outward to fix the sleeve.
- 5 Place the supplied rubber cushion over the end of the mounting bolt.
- 6 Slide the unit into the dashboard until you hear a click sound.
- 7 Reconnect the negative terminal of the car battery.

### Attach the front panel 6

- 1 Attach the trim plate.
- 2 Insert the right side of the panel in the chassis until it is correctly engaged.
- 3 Press the left side of the panel until the mechanism locks it into place.

### Turn on

- 1 Press  $\odot$  to turn on the unit.
  - To turn off the unit, press  $\odot$  for over 3 seconds.

### Set clock

- 1 Press MENU.
- 2 Press  $\blacktriangle$  or  $\blacktriangledown$  repeatedly until current time is displayed.
- 3 Turn  $\odot$  to set hour.
- 4 Press  $\odot$  to confirm.
- 5 Turn  $\odot$  to set minute.
- 6 Press  $\odot$  to confirm.

### View clock

- 1 Press and hold **OPTIONS** repeatedly until the clock is displayed.

### Listen to radio

- 1 Press **SOURCE** repeatedly to select Tuner.
- 2 Press  $\blacktriangle$  or  $\blacktriangledown$  to select band: [FM1], [FM2], [FM3], [AM1], or [AM2].

- 3 Press  $\blacktriangleleft$  or  $\blacktriangleright$  to tune to a radio station manually.
  - To search for a radio station automatically, press  $\blacktriangleleft$  or  $\blacktriangleright$  for over 3 seconds.

### Listen to Digital Audio Broadcasts (DAB)

For the first time when DAB mode is switched on.

- 1 Press **SOURCE** on the main unit repeatedly to select **DAB/DAB+**.
  - $\rightarrow$  The system performs auto scan.
  - $\rightarrow$  All the available DAB stations is stored.
  - $\rightarrow$  The radio tunes to the first available station.

### Play a disc

- 1 Insert a CD with the printed side facing up.
  - $\rightarrow$  Play starts automatically.

### Play from USB

- 1 Slide the USB socket cover marked  $\bullet \rightarrow$  to the left.
- 2 Insert the USB device into the USB socket.
  - $\rightarrow$  The unit starts playing from the USB device automatically.

## NOTE



Avoid prolonged use of the apparatus with volume above 85 decibels as this may damage your hearing.

