

## Docking Entertainment System

DCM230

Register your product and get support at  
[www.philips.com/welcome](http://www.philips.com/welcome)

User manual  
Manuel d'utilisation  
Manual de usuario  
Benutzerhandbuch  
Gebruikershandleiding  
Manuale dell'utente  
Användarhandbok  
Brugervejledning  
Käyttöopas  
Manual do usuário  
Εγχειρίδιο χρήσεως



# PHILIPS



## Italia

### DICHIARAZIONE DI CONFORMITA'

Si dichiara che l'apparecchio DCM230 Philips risponde alle prescrizioni dell'art. 2 comma 1 del D.M. 28 Agosto 1995 n. 548.

Fatto a Eindhoven

Philips Consumer Electronics  
Philips, Glaslaan 2  
5616 JB Eindhoven, The Netherlands

## Norge

Typeskilt finnes på apparatens underside.

**Observer: Nettbryteren er sekundert innkoplet. Den innebygde nettdelen er derfor ikke frakoplet nettet så lenge apparatet er tilsluttet nettkontakten.**

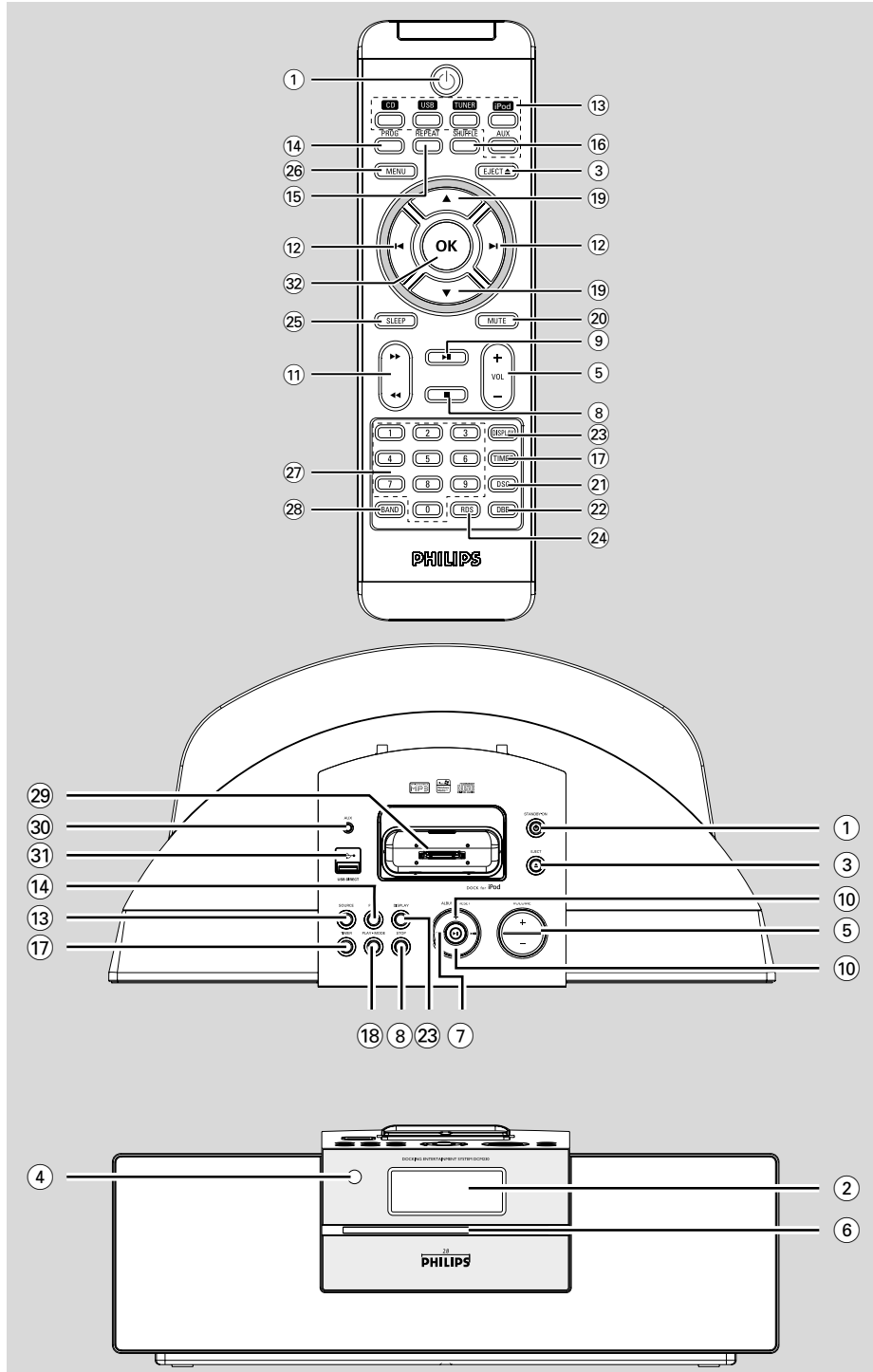
For å redusere faren for brann eller elektrisk støt, skal apparatet ikke utsettes for regn eller fuktighet.

## CAUTION

*Use of controls or adjustments or performance of procedures other than herein may result in hazardous radiation exposure or other unsafe operation.*

## VAROITUS

*Muiden kuin tässä esitettyjen toimintojen säädön tai asetusten muutto saattaa altistaa vaaralliselle säteilylle tai muille vaarallisille toiminnoille.*





## DK

**Advarsel:** Usynlig laserstråling ved åbning når sikkerhedsafbrydere er ude af funktion. Undgå udsættelse for stråling.

**Bemærk:** Netafbryderen er sekundært indkoblet og afbryder ikke strømmen fra nettet. Den indbyggede netdel er derfor tilsluttet til lysnettet så længe netstikket sidder i stikkontakten.

## S

**Klass 1 laserapparat**

**Varning!** Om apparaten används på annat sätt än i denna bruksanvisning specificerats, kan användaren utsättas för osynlig laserstrålning, som överskrider gränsen för laserklass 1.

**Observera!** Stömbrytaren är sekundärt kopplad och bryter inte strömmen från nätet. Den inbyggda nät delen är därför ansluten till elnätet så länge stickproppen sitter i vägguttaget.

## SF

**Luokan 1 laserlaite**

**Varoitus!** Laitteen käyttäminen muulla kuin tässä käyttöohjeessa mainitulla tavalla saattaa altistaa käyttäjän turvallisuusluokan 1 ylittävälle näkymättömälle lasersäteilylle.

**Oikeus muutoksiin varataan.** Laite ei saa olla alttiina tippu- ja roiskevedelle.

**Huom.** Toiminnanvalitsin on kytketty toisiopuolelle, eikä se kytke laitetta irti sähköverkosta. Sisäänrakennettu verkko-osa on kytkettynä sähköverkkoon aina silloin, kun pistoke on pistorasiassa.



## Index

English ..... 6

Français ..... 28

Español ..... 50

Deutsch ..... 72

Nederlands ..... 94

Italiano ..... 116

Svenska ..... 138

Dansk ..... 160

Suomi ..... 182

Português ..... 204

Ελληνικά ..... 226

English

Français

Español

Deutsch

Nederlands

Italiano

Svenska

Dansk

Suomi

Português

Ελληνικά

## Contents

### General Information

Environmental Information .....	7
Supplied accessories .....	7
Safety Information .....	7
Hearing Safety .....	8

### Preparations

Rear connections .....	9
Connecting a USB device or memory card .....	10
Connecting other equipment to your system .....	10
Before using the remote control .....	11
Replacing battery (lithium CR2025) into the remote control .....	11

### Controls

Controls on the system and remote control .....	12
---	----

### Basic Functions

Switching the system on .....	14
Switching the system to Eco Power Standby mode .....	14
Power Saving Automatic Standby .....	14
Adjusting volume and sound .....	14

### CD/MP3-CD Operation

Loading a disc .....	15
Basic playback controls .....	15
Playing an MP3 disc .....	16
Different play modes: SHUFFLE and REPEAT .....	17
Programming track numbers .....	17
Erasing the program .....	17

### Radio Reception

Tuning to radio stations .....	18
Programming radio stations .....	18
Automatic programming .....	18
Manual programming .....	18
Tuning to preset radio stations .....	19
RDS .....	19
Setting the RDS clock .....	19

### External Sources

Using a non-USB device .....	20
Using a USB mass storage device .....	20

### Clock/Timer

Clock setting .....	22
Timer setting .....	22
Activating and deactivating timer .....	22
Sleep timer setting .....	23

### iPod Dock

Compatible iPod players .....	24
Selecting the correct dock adaptor .....	24
Setup .....	24
Playing an iPod portable player .....	24
Charging iPod battery using the dock .....	24

### Specifications

### Maintenance

### Troubleshooting

## General Information

Congratulations on your purchase and welcome to Philips!

To fully benefit from the support that Philips offers, register your product at [www.philips.com/welcome](http://www.philips.com/welcome).

***This product complies with the radio interference requirements of the European Community.***

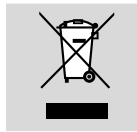
### Environmental Information

All unnecessary packaging has been omitted. We have tried to make the packaging easy to separate into three materials: cardboard (box), polystyrene foam (buffer) and polyethylene (bags, protective foam sheet).

Your system consists of materials which can be recycled and reused if disassembled by a specialized company. Please observe the local regulations regarding the disposal of packaging materials, exhausted batteries and old equipment.

### Disposal of your old product

Your product is designed and manufactured with high quality materials and components, which can be recycled and reused.



When this crossed-out wheeled bin symbol is attached to a product it means the product is covered by the European Directive 2002/96/EC.


Please inform yourself about the local separate collection system for electrical and electronic products.

Please act according to your local rules and do not dispose of your old products with your normal household waste. The correct disposal of your old product will help prevent potential negative consequences for the environment and human health.

### Notes for battery disposal

Your product contains batteries covered by the European Directive 2006/66/EC, which cannot be disposed of with normal household waste. Please inform yourself about the local rules on separate collection of batteries. The correct disposal of batteries helps prevent potentially negative consequences on the environment and human health.

### Supplied accessories

- remote control (with battery)
- FM antenna
- MW antenna
- 4 X iPod dock adaptors
- 1 X certified AC/DC adapter (Input: 100-240V ~ 50-60Hz 1.2 A, Output: 15V  3A)

### Safety Information

- Before operating the system, check that the operating voltage indicated on the typeplate of your system is identical with the voltage of your local power supply. If not, please consult your dealer.
- Place the system on a flat, hard and stable surface.
- Place the system in a location with adequate ventilation to prevent internal heat build-up in your system. Allow at least 10 cm (4 inches) clearance from the rear and the top of the unit and 5 cm (2 inches) from each side.
- The ventilation should not be impeded by covering the ventilation openings with items, such as newspapers, table-cloths, curtains, etc.
- Do not expose the system, batteries or discs to excessive moisture, rain, sand or heat sources caused by heating equipment or direct sunlight.
- No naked flame sources, such as lighted candles, should be placed on the apparatus.
- No objects filled with liquids, such as vases, shall be placed on the apparatus.
- Install this unit near the AC outlet and where the AC power plug can be reached easily.
- The apparatus shall not be exposed to dripping or splashing.
- If the system is brought directly from a cold to a warm location, or is placed in a very damp room, moisture may condense on the lens of the disc unit inside the system. Should this occur, the CD player would not operate normally. Leave the power on for about one hour with no disc in the system until normal playback is possible.
- The mechanical parts of the set contain self-lubricating bearings and must not be oiled or lubricated.
- **When the system is switched to Standby mode, it is still consuming some power.**  
**To disconnect the system from the power supply completely, remove the AC power plug from the wall socket.**

English

## General Information

### Hearing Safety

#### Listen at a moderate volume.

- Using headphones at a high volume can impair your hearing. This product can produce sounds in decibel ranges that may cause hearing loss for a normal person, even for exposure less than a minute. The higher decibel ranges are offered for those that may have already experienced some hearing loss.
- Sound can be deceiving. Over time your hearing "comfort level" adapts to higher volumes of sound. So after prolonged listening, what sounds "normal" can actually be loud and harmful to your hearing. To guard against this, set your volume to a safe level before your hearing adapts and leave it there.

#### To establish a safe volume level:

- Set your volume control at a low setting.
- Slowly increase the sound until you can hear it comfortably and clearly, without distortion.

#### Listen for reasonable periods of time:

- Prolonged exposure to sound, even at normally "safe" levels, can also cause hearing loss.
- Be sure to use your equipment reasonably and take appropriate breaks.

#### Be sure to observe the following guidelines when using your headphones.

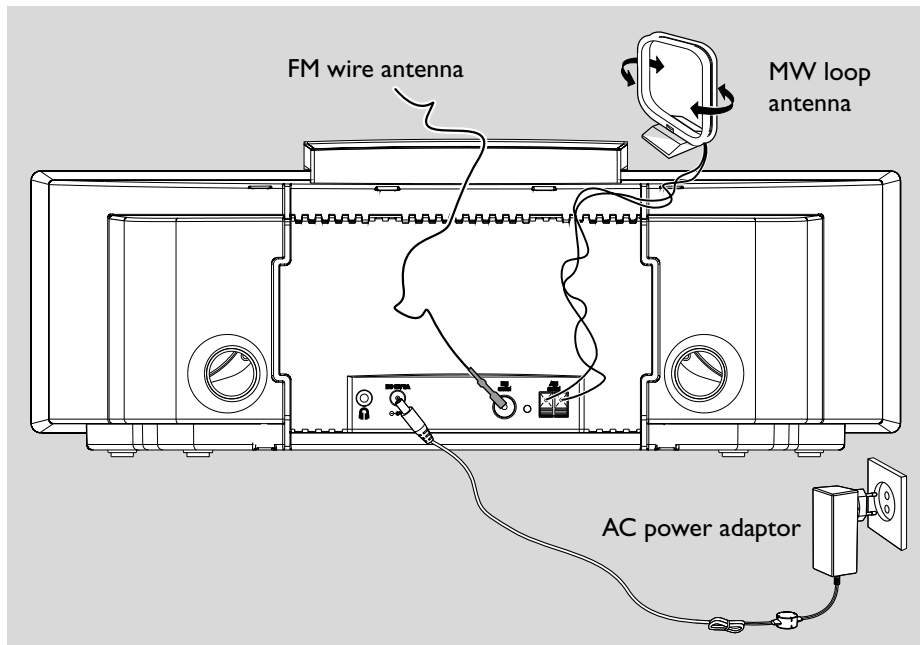
- Listen at reasonable volumes for reasonable periods of time.
- Be careful not to adjust the volume as your hearing adapts.
- Do not turn up the volume so high that you can't hear what's around you.
- You should use caution or temporarily discontinue use in potentially hazardous situations.
- Do not use headphones while operating a motorized vehicle, cycling, skateboarding, etc.; it may create a traffic hazard and is illegal in many areas.





## Preparations

English



### Rear connections

*The type plate is located at the rear of the system.*

*For users in the U.K.: please follow the instructions on page 2.*

#### A Power

- Before connecting the AC power adaptor to the wall outlet, ensure that all other connections have been made.

#### WARNING!

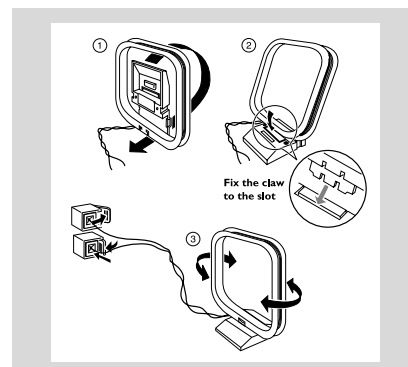
- For optimal performance, use only the original AC power adaptor.
- Never make or change connections with the power switched on.

*To avoid overheating of the system, a safety circuit has been built in. Therefore, your system may switch to Standby mode automatically under extreme conditions. If this happens, let the system cool down before reusing it (not available for all versions).*

#### B Antennas Connection

Connect the supplied MW loop antenna and FM antenna to the respective terminals. Adjust the position of the antenna for optimal reception.

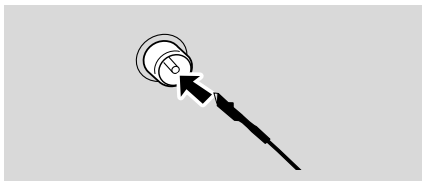
#### MW Antenna



- Position the antenna as far as possible from a TV, VCR or other radiation source.

## Preparations

### FM Antenna



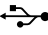
- For better FM stereo reception, connect an outdoor FM antenna to the FM AERIAL (FM ANTENNA) terminal.

### Optional connection

The optional equipment and connecting cords are not supplied. Refer to the operating instructions of the connected equipment for details.

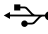
### Connecting a USB device or memory card

By connecting a USB mass storage device (including USB flash memory, USB flash players or memory cards) to the Hi-Fi system, you can enjoy the device's stored music through the powerful speakers of Hi-Fi system.

- Insert the USB device's USB plug into the  socket on the set.


OR

#### for the devices with USB cables:

- 1 Insert one plug of the USB cable (not supplied) to the  socket on the set.
- 2 Insert the other plug of the USB cable to the USB output terminal of the USB device.

OR

#### for the memory card:

- 1 Insert the memory card into a card reader (not supplied).
- 2 Use a USB cable (not supplied) to connect the card reader into the  socket on the set.

### Connecting other equipment to your system

- Use a cinch cable to connect AUX to the analogue audio out terminals of an external equipment (TV, VCR, Laser Disc player, DVD player or CD Recorder).

#### Note:

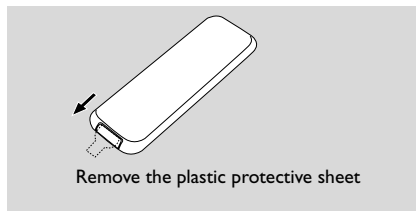
- If you are connecting equipment with a mono output (a single audio out terminal), connect it to the AUX left terminal. Alternatively, you can use a "single to double" cinch cable (the output sound still remain mono).

## Preparations

English

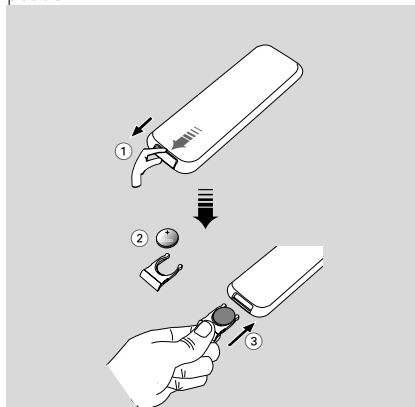
### Before using the remote control

- 1 Pull out the plastic protective sheet.
- 2 Select the source you wish to control by pressing one of the source select keys on the remote control (for example DISC, FM).
- 3 Then select the desired function (for example ► II , ◀◀ , ►►).



### Replacing battery (lithium CR2025) into the remote control

- 1 Press the slot on the battery compartment.
- 2 Pull out the battery compartment.
- 3 Replace a new battery and fully insert the battery compartment back to the original position.



**CAUTION!**  
Batteries contain chemical substances, so they should be disposed of properly.

## Controls *(illustrations on page 3)*

### Controls on the system and remote control

① **STANDBY-ON/ECO POWER**

- switches the system on or to Eco Power standby/normal standby with clock display.

② **Display screen**

- shows the status of the system.

③ **EJECT**

- ejects a disc from the disc loader.

④ **IR SENSOR**

- remote sensor

⑤ **VOLUME -/+ (VOL +/-)**

- adjusts the volume level.

⑥ **Disc loader**

⑦

for CD/MP3-CD/USB

fast searches back and forward within a track/disc (press and hold).

..... skips to the beginning of a current/previous/subsequent track.

⑧ **STOP**

- stops disc playback or erases a disc program.

⑨

- starts or interrupts playback.

⑩ **ALBUM/PRESET +/-**

- (for MP3-CD/USB) skips to the beginning of a current/previous/subsequent album.
- adjusts the hours and minutes for the clock/timer function.
- selects a preset radio station.

⑪

for CD/MP3-CD/USB

fast searches back and forward within a track/disc (press and hold).

for TUNER ..... tunes to radio stations (down/up).

⑫

for CD/MP3-CD/USB

..... skips to the beginning of a current/previous/subsequent track.

⑬ **SOURCE**

- selects the respective sound source for CD/USB/iPod/TUNER (FM/MW)/AUX.

⑭ **PROG**

- (for CD/MP3/USB) programs tracks.
- (for TUNER) programs radio stations.
- sets the clock function.

⑮ **REPEAT**

for CD/MP3/USB selects a repeat playback mode.

⑯ **SHUFFLE**

- plays disc/USB tracks randomly.

⑰ **TIMER**

- sets the timer function.

⑱ **PLAY•MODE**

- selects various repeat modes or the shuffle play mode for a disc.

⑲

- (for MP3-CD/USB) skips to the beginning of a current/previous/subsequent album.

⑳ **MUTE**

- interrupts and resumes sound production.

㉑ **DSC (Digital Sound Control)**

- selects sound characteristics: ROCK/POP/JAZZ/CLASSIC.

㉒ **DBB (Dynamic Bass Boost)**

- enhances the bass.

㉓ **DISPLAY**

- selects different disc information display modes during playback.

㉔ **RDS**

- for TUNER, displays RDS information.

㉕ **SLEEP**

- selects the sleeper time.

## Controls

English

### ②⑥ MENU

- equivalent to the MENU button on your iPod player.

### ②⑦ Numerical Keypad (0~9)

- (for CD/MP3/USB) selects a track directly.

### ②⑧ BAND

- For tuner (TUNER): press to switch between MW and FM.

### ②⑨ iPod dock

- is used to dock your iPod player for playback or recharging through this system.

### ③⑩ AUX

- is the jack used to connect an auxiliary device.

### ③⑪ USB DIRECT

- jack for the external USB mass storage device.

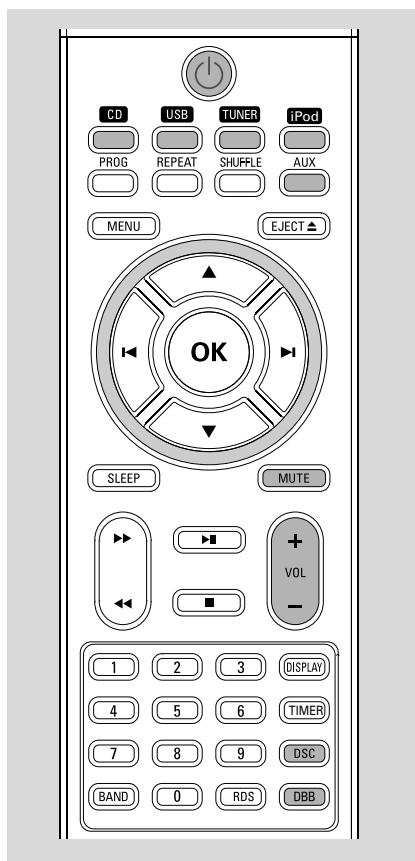
### ③⑫ OK

- confirms a selection (for iPod menu operation only).

#### Notes for remote control:

- *First select the source you wish to control by pressing one of the source select keys on the remote control (for example CD, FM).*
- *Then select the desired function (for example ► II, ◀◀, ▶▶).*

## Basic Functions



**Important!**  
Before you operate the system, complete the preparation procedures.

### Switching the system on

- Press **STANDBY-ON/ECO POWER** (or on the remote).  
→ The system will switch to the last selected source.
- Press **SOURCE** on the top of the system or **CD, USB, iPod, TUNER** or **AUX** on the remote control.  
→ The system will switch to the selected source.

### Switching the system to standby mode

- Press **STANDBY-ON/ECO POWER** (or on the remote).

- The backlight for clock display is dim in standby.
- The volume level (up to a maximum volume level of 12), interactive sound settings, last selected mode (ECO Power Standby or normal standby), source and tuner presets will be retained in the player's memory.

### Switching the system to Eco Power Standby mode

- Press and hold **STANDBY-ON/ECO POWER** (or on the remote) for more than 2 seconds.  
→ The backlight will go blank.

### Power Saving Automatic Standby

As a power-saving feature, the system automatically switches to Eco Power/ Standby 15 minutes after a CD/MP3/USB has reached the end and no control is operated.

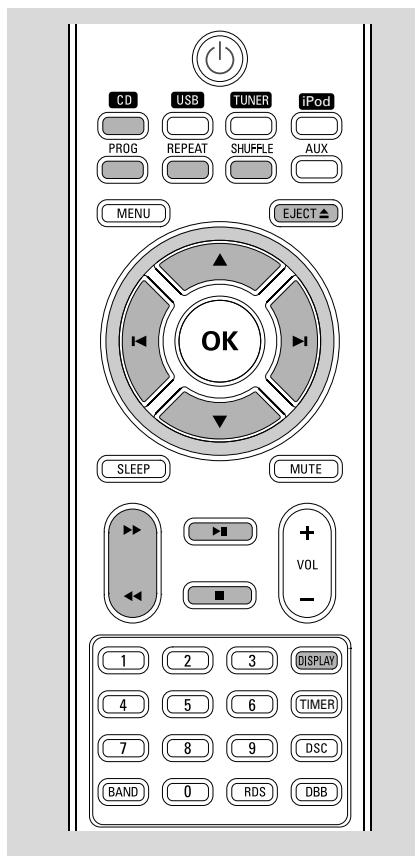
### Adjusting volume and sound

- 1 Press **VOLUME +/-** (or **VOL +/-** on the remote control) to decrease or increase the volume.  
→ Display shows the volume level VOL and a number from MIN 01, 02, ...31 MAX.
  - 2 Press **DSC** repeatedly to select the desired sound effect: **ROCK/POP/JAZZ/CLASSIC**.
  - 3 Press **DBB** to switch bass enhancement on or off.  
→ If the DBB is activated, **DBB ON** is shown.  
→ If the DBB is deactivated, **DBB OFF** is shown.
  - 4 Press **MUTE** on the remote control to interrupt sound reproduction instantly.  
→ Playback will continue without sound and **MUTE ---** will flash on the display.
- To activate sound reproduction you can:
    - press **MUTE** again;
    - adjust the volume controls;
    - change source.

### To listen through the headphone

- Connect the headphone plug to the socket on the rear of the set.  
→ The speakers will be muted.

## CD/MP3-CD Operation



**Important!**  
The lens of the CD player should never be touched.

### Loading a disc

This CD player plays Audio Discs including CD Recordables, CD-Rewritables and MP3 CD.

- CD-ROM, CD-I, CDV, VCD, DVD or computer CDs, however, are not possible.
- ① Press **SOURCE** on the top of the system to select CD or press **CD** on the remote.
- ② Insert a disc into the disc loader.
  - Make sure the label side is facing up.
  - Make sure you have removed any other disc from the slot loader.

- ③ Press **▶ ||** to start playback.
- ④ At any time, simply press **■** to stop playback.

### Basic playback controls

#### To play a disc

- Press **▶ ||** to start playback.
  - The current track number and elapsed playing time of the track are displayed during disc playback.

#### To select a different track

- Press **◀◀▶▶▶▶** (or **◀▶** on the remote control) once or repeatedly until the desired track number appears in the display.
- You can also use the **Numerical Keypad (0~9)** on the remote to select a track directly.
- If you have selected a track number shortly after loading a disc or in the PAUSE position, you will need to press **▶ ||** to start playback.

### Text display during playback

#### In CD mode

- Press **DISPLAY** repeatedly to see the following information.
  - Track number and elapsed playback time of current track.
  - Track number and total elapsed playback time.
  - Track number and remaining playback time of current track.
  - Track number and total remaining playback time.
  - Clock time.

#### In MP3-CD mode

- Press **DISPLAY** to display the ID-3 information if available and the clock time.

English

## CD/MP3-CD Operation

### To find a passage within a track

- ① Press and hold **I◀◀▶▶I** (or **◀◀/▶▶** on the remote control).
- ② When you recognize the passage you want, release **I◀◀▶▶I** (or **◀◀/▶▶** on the remote control).  
→ Normal playback continues.

### To stop playback

- Press **■**.

### To interrupt playback

- Press **▶ II** during playback.  
→ The display freezes and the elapsed playing time flashes when playback is interrupted.  
→ To resume, press **▶ II** again.

Notes:

*CD play will also stop when;*

- *you eject the disc.*
- *the disc has reached the end.*
- *you select another source: TUNER, USB, DOCK or AUX.*
- *you select standby.*
- *the set auto off time expires.*

### Playing an MP3 disc

- ① Load an MP3 disc.  
→ The disc reading time may exceed 10 seconds due to the large number of songs compiled into one disc.
- ② Press **ALBUM/PRESET +/-** (or **▲ / ▼** on the remote control) to select a desired album.
- ③ Press **I◀◀▶▶I** (or **◀ / ▶** on the remote control) to select a desired track.  
→ The album number will change accordingly as you reach the first track of an album by pressing **I◀◀** (**◀** on the remote) or the last track of an album by pressing **▶▶I** (**▶** on the remote).
- ④ Press **▶ II** to start playback.

### Supported MP3 disc formats:

- ISO9660, Joliet
- Maximum title number: 999 (depending on filename length)
- Maximum album number: 99
- Supported sampling frequencies: 32 kHz, 44.1kHz, 48 kHz
- Supported Bit-rates: 32~256 (kbps), variable bitrates





## CD/MP3-CD Operation

### Different play modes: SHUFFLE and REPEAT

You can select and change the various play modes before or during playback. The REPEAT modes can also be combined with PROGRAM.

- ❶ To select your play mode, press **PLAY•MODE** (**SHUFFLE** or **REPEAT** on the remote control) before or during playback until the display shows the desired function.
  - appears if the shuffle playback is activated and disappears if deactivated.
  - If appears, it indicates to play the current track repeatedly.
  - If is displayed, it indicates to play all tracks in the whole disc repeatedly.
  - For an MP3 CD, if both and flash on the display panel, it indicates to play the current album repeatedly.
- ❷ Press to start playback if in the STOP position.
  - If you have selected SHUFFLE, playback starts automatically.
- ❸ To return to normal playback, press the **PLAY•MODE** (**SHUFFLE** or **REPEAT** on the remote control) until or is no longer displayed.
- You can also press to stop playback and cancel your play mode.

#### Note:

- The Repeat and Shuffle functions cannot be activated simultaneously.

### Programming track numbers

Program in the STOP position to select and store your disc tracks in the desired sequence. If you like, store any track more than once. Up to 40 tracks can be stored in the memory.

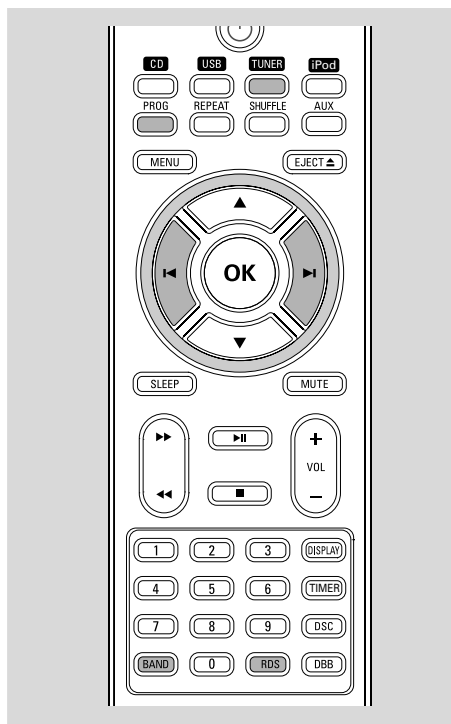
- ❶ Press **PROG** to enter the programming mode.
  - A track number flashes.
- ❷ Press (or / on the remote control) to select your desired track number.
- For an MP3 CD, Press **ALBUM/PRESET +/-** (or / on the remote control) to select a desired album number.
- ❸ Press **PROG** to confirm the track number to be stored.
  - *PR X* displays, in which *X* denotes the next program number to be stored.
- ❹ Repeat steps 2-3 to select and store all desired tracks.
  - *PROGRAM FULL* appears if you attempt to program more than 40 tracks.
- ❺ Press to finish programming.
  - *PROG* displays on the screen.
- ❻ To start playback of your disc program, press directly.

### Erasing the program

You can erase the program by:

- pressing once in the STOP mode;
- pressing twice during playback;
  - *PROG* disappears.
- ejecting the current disc;

## Radio Reception



### Tuning to radio stations

- 1 Press **SOURCE** repeatedly (or **TUNER** on the remote control) to select the tuner source.
- 2 Press **BAND** on the remote control to select the desired waveband : FM or MW.
- 3 Hold **◀◀/▶▶** (or **◀/▶** on the remote control) and then release the button.  
→ The system will start searching for a radio station with sufficient signal strength.
- 4 Repeat step 3 if necessary until you find the desired station.
- To tune to a weak station, press **◀◀/▶▶** (or **◀/▶** on the remote control) briefly and repeatedly until you have found optimal reception.

### Programming radio stations

You can store up to a total of 20 radio stations for each band in the memory.

#### Automatic programming

Automatic programming will start with a chosen preset number. From this preset number upwards, former programmed radio stations will be overridden.

- 1 Press **ALBUM/PRESET +/-** (or **◀/▶** on the remote control) to select the preset number where programming should start.

#### Note:

— If no preset number is selected, default is preset (1) and all your presets will be overridden.

- 2 Press **PROG** for more than two seconds to activate programming.  
→ All available stations are programmed.

#### Manual programming

- 1 Tune to your desired station (refer to "Tuning to radio stations").
- 2 Press **PROG** to activate programming.  
→ **PROG** flashes in the display.
- 3 Press **ALBUM/PRESET +/-** (or **◀/▶** on the remote control) to allocate a number from 1 to 20 to this station.
- 4 Press **PROG** again to confirm the setting.  
→ **PROG** disappears, the preset number and the frequency of the preset station are shown.
- 5 Repeat the above four steps to store other stations.
- You can override a preset station by storing another frequency in its place.

## Radio Reception

English

### Tuning to preset radio stations

- Press **ALBUM/PRESET +/-** (or ▲ / ▼ on the remote control) until the desired preset station is displayed.

### RDS

**Radio Data System** is a service that allows FM stations to show additional information. If you are receiving a RDS station, **RDS** and the station name are displayed.

When automatic programming is used, RDS stations will be programmed first.

### Scrolling through different RDS information

- Press **RDS** on the remote control briefly and repeatedly to scroll through the following information (if available):
  - Station name
  - Radio text messages
  - Program type
  - Frequency

## External Sources

### Using a non-USB device

- 1 Connect the audio out terminals of the external equipment (TV, VCR, Laser Disc player, DVD player or CD Recorder) to the AUX terminals of your system.
- 2 Press **SOURCE** repeatedly (or **AUX** on the remote control) to select external equipment.

#### Notes:

- All the sound control features (DSC or DBB, for example) are available for selection.
- Refer to the operating instructions for the connected equipment for details.

### Using a USB mass storage device

By connecting a USB mass storage device to the Hi-Fi system, you can enjoy the device's stored music through the powerful speakers of Hi-Fi system.

#### Playing a USB mass storage device Compatible USB mass storage devices

With the Hi-Fi system, you can use:

- USB flash memory (USB 2.0 or USB1.1)
- USB flash players (USB 2.0 or USB1.1)
- memory cards (requires an additional card reader to work with this Hi-Fi system)

#### Notes:

- In some USB flash players (or memory devices), the stored contents are recorded using copyright protection technology. Such protected contents will be unplayable on any other devices (such as this Hi-Fi system).
- Compatibility of the USB connection on this product:
  - a) This product supports most USB Mass storage devices (MSD) that are compliant to the USB MSD standards.
  - i) Most common Mass storage class devices are flash drives, memory sticks, jump drives and etc.
  - ii) If you see a "Disc Drive" show up on your computer after you plugged the mass storage device into your computer, most likely it is MSD compliant and it will work with this product.

b) If your Mass storage device required a battery/ power source. Please make sure you have a fresh battery in it or charge the USB device first and then plug it into the product again.

#### – Supported Music type:

a) This device only supports unprotected music with the following file extension:

.mp3

.wma

b) Music bought from on-line music stores are not supported because they are secured by Digital Rights Management protection (DRM).

c) File name extensions that end with the following are not supported:

.wav; .m4a; .m4p; .mp4; .aac and etc.

- No Direct connection can be made from Computer USB port to the product even you have either or both mp3 or wma files in your computer.

#### Supported formats:

- USB or memory file format FAT12, FAT16, FAT32 (sector size: 512 bytes)
- MP3 bit rate (data rate): 32-320 Kbps and variable bit rate
- WMA v9 or earlier
- Directory nesting up to a maximum of 8 levels
- Number of albums/ folders: maximum 99
- Number of tracks/titles: maximum 400
- ID3 tag v2.0 or later
- File name in Unicode UTF8 (maximum length: 128 bytes)

#### The system will not play or support the following:

- Empty albums: an empty album is an album that does not contain MP3/WMA files, and will not be shown in the display.
- Non-supported file formats are skipped. This means that e.g.: Word documents .doc or MP3 files with extension .dlf are ignored and will not be played.
- AAC, WAV, PCM audio files
- DRM protected WMA files
- WMA files in Lossless format



## External Sources

### How to transfer music files from PC to a USB mass storage device

By dragging and dropping music files, you can easily transfer your favorite music from PC to a USB mass storage device.

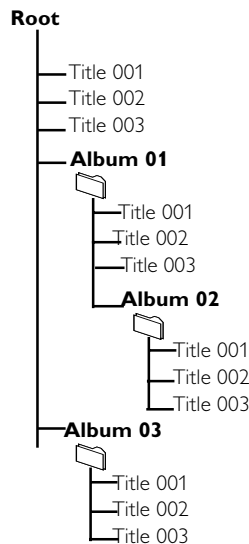
For the flash player, you can also use its music management software for the music transfer.

**However, those WMA files may be unplayable for compatibility reasons.**

### How to organize your MP3/WMA files on the USB mass storage device

This Hi-Fi system will browse the MP3/WMA files in the folders/sub-folders/titles order.

Example:



Organize your MP3/WMA files in different folders or subfolders as required.

#### Notes:

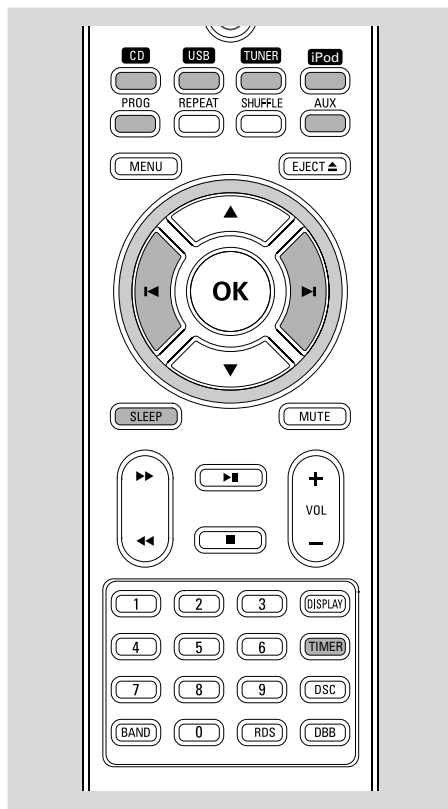
- If you have not organized MP3/WMA files into any albums on your disc, an album "01" will be automatically assigned for all those files.
- Make sure that the file names of MP3 files end with .mp3, and the file names of WMA files end with .wma.
- For DRM protected WMA files, use Windows Media Player 10 (or later) for conversion. Visit [www.microsoft.com](http://www.microsoft.com) for details about Windows Media Player and WM DRM (Windows Media Digital Rights Management).

- 1 Check the USB device has been properly connected. (See Installation: Connecting an additional appliance).
- 2 Press **SOURCE (USB)** on the remote) once or more to select USB.
  - **NO FILE** appears if no audio file is found in the USB device.
- 3 Play the USB's audio files as you do with the albums/tracks on a CD (See CD/MP3 Operations).

#### Notes:

- For compatibility reasons, the album/track information may differ from what it is displayed through flash players' music management software.
- File names or ID3 tags will be displayed as — if they are not in English.

## Clock/Timer



### Clock setting

The clock can be set in either 12-hour or 24-hour mode (12HR or 24HR for example).

- 1 In standby mode, press **PROG**.  
→ SET CLOCK is displayed briefly. Then, 12HR or 24HR is displayed.
- 2 Press **ALBUM/PRESET +/-** (or ◀/▶ on the remote control) to select clock mode.  
→ The clock digits for the hours continue to flash.
- 3 Press **ALBUM/PRESET +/-** (or ◀/▶ on the remote control) to set the hours.
- 4 Press **PROG** again.  
→ The clock digits for the minutes flash.
- 5 Press **ALBUM/PRESET +/-** (or ◀/▶ on the remote control) to set the minutes.
- 6 Press **PROG** to confirm the time.

### Timer setting

- The system can be used as an alarm clock, whereby the CD, TUNER, USB or DOCK is switched on at a set time (one time operation). The clock time needs to be set first before the timer can be used.
  - During setting, if no button is pressed within 90 seconds, the system will exit timer setting mode automatically.
- 1 Press **TIMER** for more than two seconds.
  - 2 Press **SOURCE** repeatedly to select the sound source.  
→ "SET TIMER" and "SELECT SOURCE" are displayed.
  - 3 Press **TIMER** to confirm your desired mode.  
→ The clock digits for the hours flash.
  - 4 Press **ALBUM/PRESET +/-** (or ◀/▶ on the remote control) to set the hours.
  - 5 Press **TIMER** again.  
→ The clock digits for the minutes flash.
  - 6 Press **ALBUM/PRESET +/-** (or ◀/▶ on the remote control) to set the minutes.
  - 7 Press **TIMER** to confirm the time.  
→ The timer is now set and activated.

### Activating and deactivating timer

- In standby or during playback, press **TIMER once** on the remote control.  
→ Display shows ⌚ if activated, and disappears if deactivated.

## Clock/Timer

English

### Sleep timer setting

The sleep timer enables the system to switch off by itself after a set period of time.

- ① Press **SLEEP** on the remote control repeatedly to select a preset time.
  - The selections are as follows (time in minutes):  
**OFF → 90 → 75 → 60 → 45 → 30 → 15 → OFF → 90 ...**
  - "SLEEP xx" is displayed. "xx" is the time in minutes.
  - „z" is displayed if the sleep time you have selected is not OFF.
- ② When you reach the desired length of time, stop pressing the **SLEEP** button.

### To deactivate the sleep timer

- Press **SLEEP** repeatedly until "OFF" is displayed, or press **ECO POWER/STANDBY ON** .

## iPod Dock

### Compatible iPod players

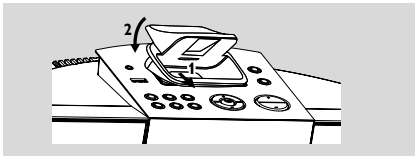
- Most Apple iPod models with 30-pin dock connectors as follows:  
Nano 1st /2nd/3rd generation, iPod 5th generation (video), iPod touch and iPod classic.

### Selecting the correct dock adaptor

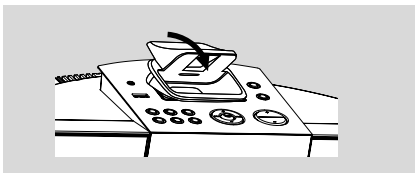
- 4 iPod dock adaptors of different type, as indicated at the back of the adaptor; are included to fit the following iPod:  
Nano 1st /2nd/3rd generation, iPod 5th generation (video), iPod touch and iPod classic.

### Setup

- Insert a dock adapter corresponding to the portable player you use.



- To connect with a different iPod portable player, pop up the corresponding dock adapter and replace with a new one of the matching type.



### Playing an iPod portable player

- 1 Correctly dock your iPod portable player in the cradle. Make sure the dock adaptor is compatible.
- 2 Make sure that you have powered on your iPod player before selecting **DOCK** source.  
→ On the display, "iPod" is displayed if iPod is connected.
- 3 Press **SOURCE** on the system repeatedly or **iPod** on the remote control to select iPod source.
- 3 Playback starts automatically. You can select available features (such as play/pause, skip track, fast forward/backward, menu selection) during playback.

### Charging iPod battery using the dock

- In **DOCK** mode, directly dock your iPod portable player on the cradle for charging.

#### Note:

— For the purpose of **SAVING POWER**, recharging of your iPod or USB device is **NOT SUPPORTED** when the main set is in the **STANDBY MODE**.





## Specifications

### AMPLIFIER

Output power ..... 2 x 15 W RMS  
Signal-to-noise ratio .....  $\geq 70$  dBA  
Frequency response ..... 20 Hz – 20 KHz,  $\pm 3$  dB  
Input sensitivity AUX ..... 0.5 V (max. 2 V)  
Impedance loudspeakers ..... 4  $\Omega$   
Impedance headphones ..... 32  $\Omega$   
Output power headphones ..... <50 mW

### CD PLAYER

Frequency range ..... 20 Hz – 20 kHz  
Signal-to-noise ratio ..... 70 dBA

### TUNER

FM wave range ..... 87.5 – 108 MHz  
Sensitivity at 75  $\Omega$   
– FM ..... 20 dBf  
Selectivity .....  $\geq 25$  dB  
Total harmonic distortion .....  $\leq 1\%$   
Frequency response  
– FM ..... 63 – 6000 Hz  
Signal-to-noise-ratio  
– FM .....  $\geq 50$  dBA

### USB PLAYER

USB ..... 12Mb/s, V1.1  
..... support MP3 and WMA files  
Number of albums/folders ..... maximum 99  
Number of tracks/titles ..... maximum 400

### GENERAL INFORMATION

AC Power ..... 100 – 240 V / 50-60 Hz  
Dimensions (w x h x d) .....  
..... 390 x 140.5 x 200.5 (mm)  
Weight ..... 2.33 kg  
Standby power consumption ..... <7 W  
Eco power standby ..... <1 W

**Specifications and external appearance are subject to change without notice.**

## Maintenance

### Cleaning the Cabinet

- Use a soft cloth slightly moistened with a mild detergent solution. Do not use a solution containing alcohol, spirits, ammonia or abrasives.

### Cleaning Discs

- When a disc becomes dirty, clean it with a cleaning cloth. Wipe the disc from the centre out.
- Do not use solvents such as benzene, thinner, commercially available cleaners, or antistatic spray intended for analogue records.



### Cleaning the disc lens

- After prolonged use, dirt or dust may accumulate at the disc lens. To ensure good playback quality, clean the disc lens with Philips CD Lens Cleaner or any commercially available cleaner. Follow the instructions supplied with cleaner.

## Troubleshooting

### WARNING

*Under no circumstances should you try to repair the system yourself, as this will invalidate the warranty. Do not open the system as there is a risk of electric shock.*

*If a fault occurs, first check the points listed below before taking the system for repair. If you are unable to remedy a problem by following these hints, consult your dealer or Philips for help.*

Problem	Solution
"PLEASE INSERT COMP3 DISC" is displayed.	<ul style="list-style-type: none"> <li>✓ Insert a disc.</li> <li>✓ Check if the disc is inserted upside down.</li> <li>✓ Wait until the moisture condensation at the lens has cleared.</li> <li>✓ Replace or clean the disc, see "Maintenance".</li> <li>✓ Use a finalised CD-RW or correct format disc.</li> </ul>
Radio reception is poor.	<ul style="list-style-type: none"> <li>✓ If the signal is too weak, adjust the antenna or connect an external antenna for better reception.</li> <li>✓ Increase the distance between the Micro HiFi System and your TV or VCR.</li> </ul>
The system does not react when buttons are pressed.	<ul style="list-style-type: none"> <li>✓ Remove and reconnect the AC power plug and switch on the system again.</li> </ul>
Sound cannot be heard or is of poor quality.	<ul style="list-style-type: none"> <li>✓ Adjust the volume.</li> <li>✓ Disconnect the headphone.</li> </ul>
The remote control does not function properly.	<ul style="list-style-type: none"> <li>✓ Select the source (CD or TUNER, for example) before pressing the function button (▶  , ◀◀ / ▶▶).</li> <li>✓ Reduce the distance between the remote control and the system.</li> <li>✓ Insert the battery with its polarities (+/- signs) aligned as indicated.</li> <li>✓ Replace the battery.</li> <li>✓ Point the remote control directly toward IR sensor on the front of the system.</li> </ul>
The timer is not working.	<ul style="list-style-type: none"> <li>✓ Set the clock correctly.</li> <li>✓ Switch on the timer.</li> </ul>
The Clock/Timer setting is erased.	<ul style="list-style-type: none"> <li>✓ Power has been interrupted or the power cord has been disconnected. Reset the clock/timer.</li> </ul>



## Troubleshooting

Problem	Solution
<b>Some files on the USB device are not displayed.</b>	✓ Check if the number of folders exceeds 99 or the number of titles exceeds 400.
<b><code>"DEVICE NOT SUPPORTED"</code> scrolls on the display.</b>	✓ Remove the USB mass storage device or select another source.

English



Meet Philips at the Internet  
<http://www.philips.com>

English

Français

Español

Deutsch

Nederlands

Italiano

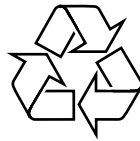
Svenska

Dansk

Suomi

Português

Ελληνικά



DCM230

**CLASS 1  
LASER PRODUCT**



Printed in China

PDCC-ZYL-0835