

Always there to help you

Register your product and get support at
www.philips.com/support

Question?
Contact
Philips



Short User Manual

PHILIPS



Specifications are subject to change without notice.
2014 © WOOX Innovations Limited. All rights reserved.
Philips and the Philips' Shield Emblem are registered trademarks of Koninklijke Philips N.V.
and are used by WOOX Innovations Limited under license from Koninklijke Philips N.V.

BT3000_05_Short User Manual_V1.0

BT3000

1 Important

Warning

- Never remove the casing of this speaker.
 - Never lubricate any part of this speaker.
 - Never place this speaker on other electrical equipment.
 - Keep this speaker away from direct sunlight, naked flames or heat.
 - Make sure that you always have easy access to the power cord, plug, or adaptor to disconnect the speaker from the power.
-
- Make sure that there is enough free space around the speaker for ventilation.
 - Only use attachments/accessories specified by the manufacturer.
 - Battery usage **CAUTION** – To prevent battery leakage which may result in bodily injury, property damage, or damage to the speaker:
 - Install the batteries correctly, + and - as marked on the speaker.
 - Do not mix batteries (old and new or carbon and alkaline, etc.).
 - Remove the batteries when the speaker is not used for a long time.
 - The batteries shall not be exposed to excessive heat such as sunshine, fire or the like.
 - Use only power supplies listed in the user manual.
 - The speaker shall not be exposed to dripping or splashing.
 - Do not place any sources of danger on the speaker (e.g. liquid filled objects, lighted candles).
 - Where the plug of the Direct Plug-in Adapter is used as the disconnect device, the disconnect device shall remain readily operable.

Note

- The type plate is located on the bottom of the product.

2 Notice

Any changes or modifications made to this device that are not expressly approved by WOOX Innovations may void the user's authority to operate the equipment.

Compliance

Hereby, WOOX Innovations declares that this product is in compliance with the essential requirements and other relevant provisions of Directive 1999/5/EC. You can find the Declaration of Conformity on www.philips.com/support.

CE 0700

Care of the environment

Disposal of your old product

Your product is designed and manufactured with high quality materials and components, which can be recycled and reused.

This symbol on a product means that the product is covered by European Directive 2012/19/EU. Inform yourself about the local separate collection system for electrical and electronic products. Follow local rules and never dispose of



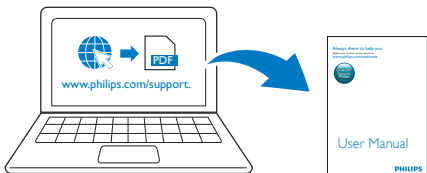
the product with normal household waste. Correct disposal of old products helps prevent negative consequences for the environment and human health.

Environmental information

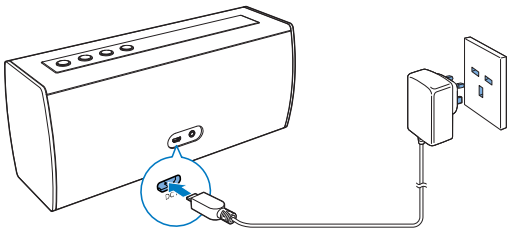
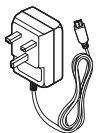
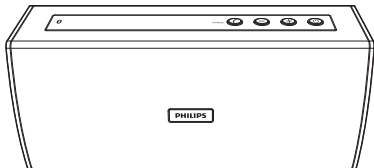
All unnecessary packaging has been omitted. We have tried to make the packaging easy to separate into three materials: cardboard (box), polystyrene foam (buffer) and polyethylene (bags, protective foam sheet). Your system consists of materials which can be recycled and reused if disassembled by a specialized company. Please observe the local regulations regarding the disposal of packaging materials, exhausted batteries and old equipment.

Trademark notice

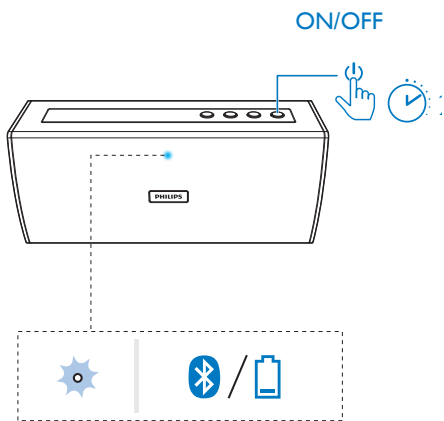
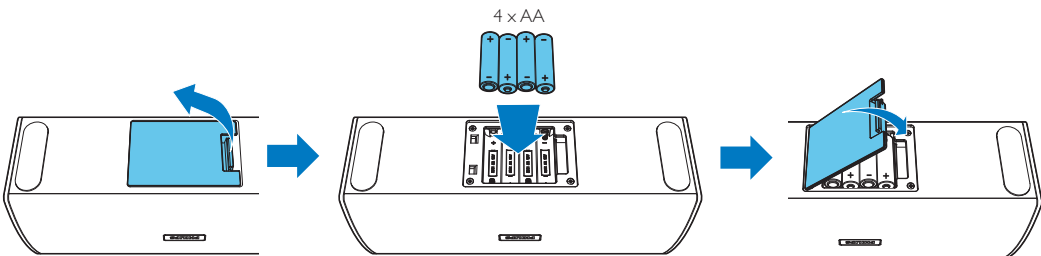
The Bluetooth® word mark and logos are registered trademarks owned by Bluetooth SIG, Inc. and any use of such marks by WOOX Innovations is under license.



To download the full user manual, visit www.philips.com/support.



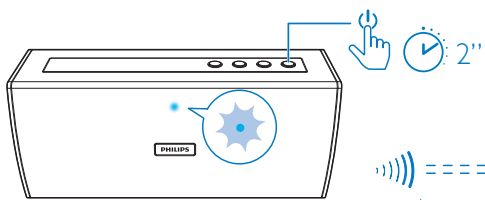
The product can be powered by either AC mains or batteries.



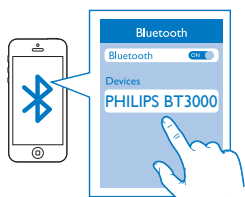
Press and hold for 2 seconds to turn on the speaker.
→ The LED indicator flashes blue.
→ If the battery is low, the LED indicator flashes red.



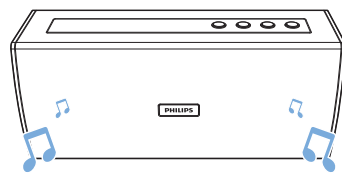
1



2



3

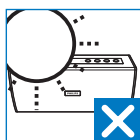
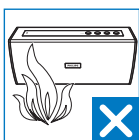
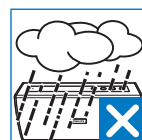
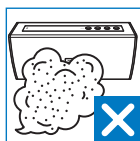
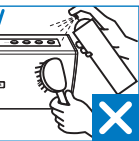
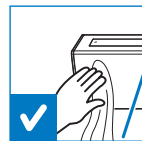
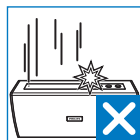
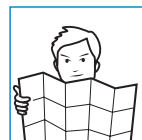
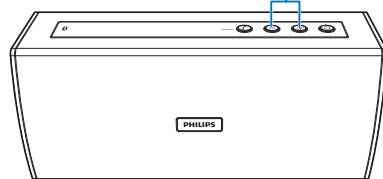


Play from Bluetooth-enabled devices

- On the speaker, press and hold for 2 seconds.
→ The LED indicator flashes blue.
- On your Bluetooth device, enable Bluetooth and search for Bluetooth devices.
- Select **[PHILIPS BT3000]** on your device to start pairing and connection. If necessary, enter default password "0000".
→ After successful pairing and connection, the speaker beeps twice, and the LED indicator turns solid blue.
- Play audio on the Bluetooth device.

Note:

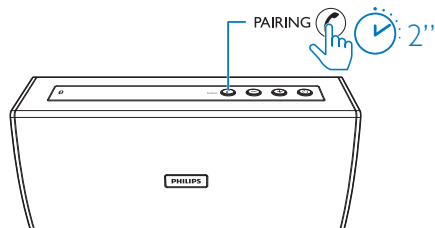
- The speaker can memorize a maximum of 4 paired devices. The fifth paired device will replace the first one.
- Keep away from any other electronic device that may cause interference.



After Bluetooth connection, you can control an incoming call with this speaker:

Button	Function
	Press to answer an incoming call.
	Press and hold for 2 seconds to reject an incoming call.
	During a call, press to end the current call.

Note: Music play pauses when there is an incoming call.



PAIRING

Enter Bluetooth pairing mode;
Disconnect Bluetooth connection.

Specifications

Amplifier

Total Output Power	5 W
Signal to Noise Ratio	> 67 dB
Audio-in Input	600 mV RMS 20 kohm

Bluetooth

Bluetooth Version	V3.0
Supported Profiles	HFP, A2DP, AVRCP
Range	10 m (Free space)

General information

Power Supply

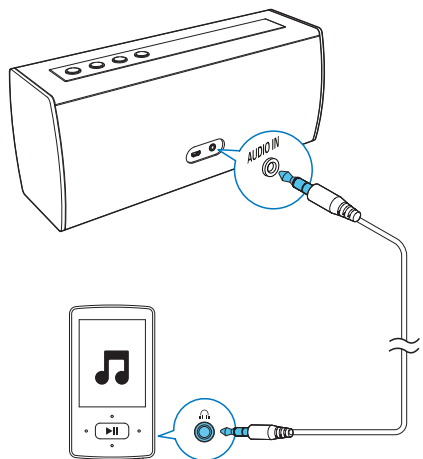
- AC Power (power adapter)	Brand name: PHILIPS; Model: AS100-050-A150; Input: 100-240 V~, 50/60 Hz, 0.5 A; Output: 5 V \pm 1.5 A;
----------------------------	---

- Battery 4 x 1.5 V LR6 AA

Operation Power Consumption 1.95 W

Dimensions - Main Unit (W x H x D) 280 x 121 x 93 mm

Weight - Main Unit 1.3 kg



Note: To switch to audio-in mode, make sure that there is no Bluetooth connection, or music playback through Bluetooth is paused.

