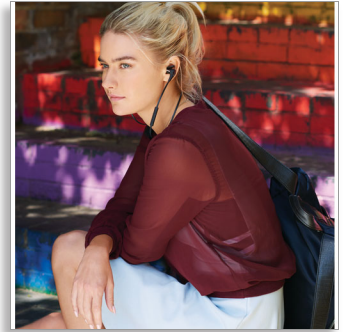




Philips
Bluetooth NFC in-ear
headphones

6mm drivers/ closed-back
In-ear



SHB5800BK



WIRELESS in-ear, NFC easy pairing

Solid bass

SHB5800 in-ear bluetooth headphones feature finely engineered drivers for solid bass & balanced sound, comfortable ear tips, one touch NFC for easy pairing and durable IPX2 sweat and moisture proofing, ideal for music and calls on the go.

Premium sound quality

- Finely tuned drivers for bassy and balanced sound
- Perfect in-ear seal blocks out external noise

Longer wearing comfort

- 3 interchangeable rubber a better fit
- 2 in-ear secure lock sizes for comfort and security
- Sweat and moisture proof materials ideal for sport

Fits your life as easily as it fits your ears

- Wireless Bluetooth music & call controls
- Bluetooth 3.0 AVRCP/HSP/HFP/A2DP mobile devices support
- One touch NFC connection for easy pairing

PHILIPS

Specifications

Accessories

- Quick start guide: Included
- USB cable: Included for charging

Design

- Color: Black

Connectivity

- Bluetooth profiles: A2DP, AVRCP, HFP, HSP
- Maximum range: Up to 10 m
- Bluetooth version: 3.0+EDR

Convenience

- Call Management: Answer/End Call, Reject Call, Last number redial, Call on Hold, Switch between call and music
- Volume control

Power

- Battery Type: Li-Polymer
- Music play time: 5.5 hr
- Standby time: 150 hr
- Talk time: 6 hr

Sound

- Frequency range: 8 -22 000Hz
- Impedance: 16 ohm
- Magnet type: Neodymium
- Maximum power input: 25 mW
- Speaker diameter: 6 mm

- Sensitivity: 105 dB
- Acoustic system: Closed
- Diaphragm: PET
- Type: Dynamic
- Sound Enhancement: Echo Control, Noise Reduction
- Voice coil: Copper

Packaging dimensions

- EAN: 69 23410 73262 7
- Packaging dimensions (W x H x D): 4 x 17.5 x 9.5 cm
- Gross weight: 0.101 kg
- Nett weight: 0.044 kg
- Number of products included: 1
- Packaging type: Carton
- Tare weight: 0.057 kg
- Type of shelf placement: Both

Outer Carton

- GTIN: 1 69 23410 73262 4
- Number of consumer packagings: 6
- Gross weight: 0.752 kg
- Outer carton (L x W x H): 21.5 x 14 x 18.5 cm
- Nett weight: 0.264 kg
- Tare weight: 0.488 kg

Product dimensions

- Product dimensions (W x H x D): 3.5 x 8 x 3.5 cm
- Weight: 0.015 kg

Highlights

2 sizes in-ear secure lock

2 in-ear secure lock sizes for comfort and security

3 sizes rubber caps

"With a choice of 3 interchangeable ear caps from size small to large, these headphones will always fit your ear perfectly. "

Bluetooth 3.0

Bluetooth 3.0 AVRCP/HSP/HFP/A2DP mobile devices support

Bluetooth-enabled wireless

When it comes to endless music listening pleasure and hassle-free switching between music and calls, nothing beats Bluetooth! To enjoy your favorite tunes, pair your Philips headset with your Bluetooth-enabled smart phone or tablet, then all it takes is a tap on each earshell's intuitive control to change the volume or pause a song while you handle incoming and outgoing calls.

Finely tuned drivers

Finely tuned earbud drivers deliver the best in sound enjoyment.

NFC easy pairing

NFC easy pairing lets you pair with only one touch with your in-ear Bluetooth and Bluetooth enabled device.

Perfect in-ear seal

Super-small speaker drivers inside these earphones fit comfortably inside the ear, yet their exceptionally snug fit seals out outside noise for an intense, high quality listening experience.

Sweat and moisture proof

IPX2 sweat and moisture proof materials make them ideal for outdoor use and casual sports.



Issue date 2022-04-29

Version: 1.4.5

12 NC: 8670 001 18156
EAN: 69 23410 73262 7

© 2022 Koninklijke Philips N.V.
All Rights reserved.

Specifications are subject to change without notice.
Trademarks are the property of Koninklijke Philips N.V.
or their respective owners.

www.philips.com