

Register your product and get support at  
[www.philips.com/welcome](http://www.philips.com/welcome)

## QUICK START GUIDE



Thanks for buying **Philips AJL305 clock radio**.

Our **Quick Start** guides you through just some of the features on the set.

Please read our instruction booklet to really rise & shine!

# 1. Using AJL305 Photo Manager

## Step 1: Install Software

You can edit and synchronize photos between the PC and AJL305 by using the supplied software AJL305 Photo Manager.

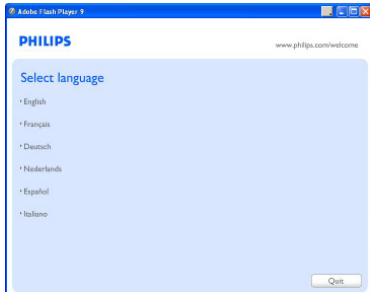
1. Insert the supplied CD into the CD or DVD driver on your PC.

→ A window pops out automatically.

### Tips:

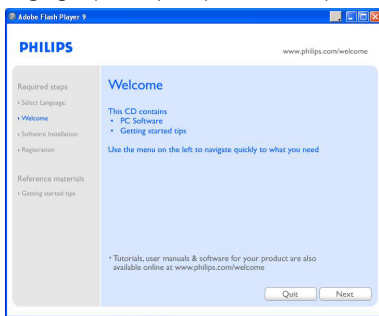
If auto run is forbidden on your PC,

- a. Double click the driver to open the folder.
- b. Double click the file setup.exe.

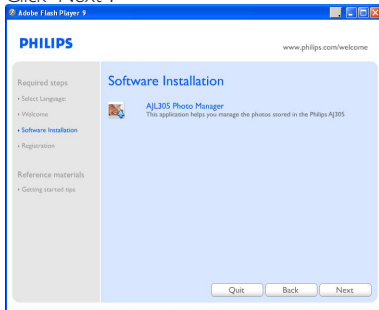


2. Select your preferred language and then click "Next".

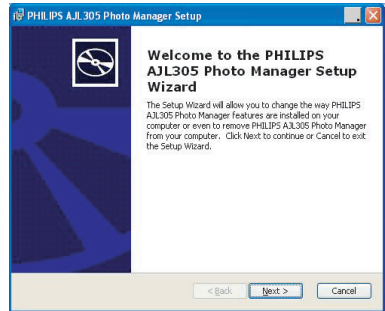
→ You can change AJL305 on screen display (OSD) language only by synchronizing the set with AJL305 Photo Manager in different languages (See step 5: Synchronization).



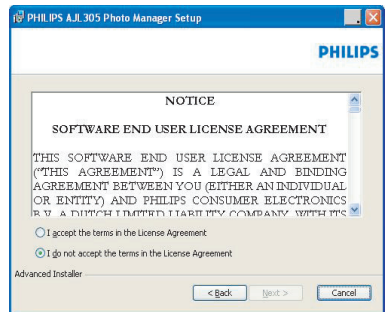
3. Click "Next".



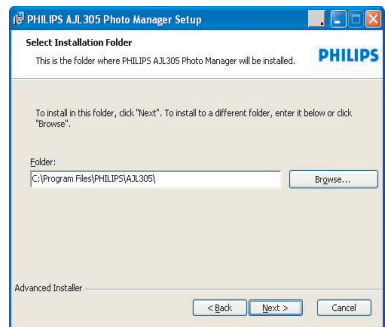
4. Click "Next".



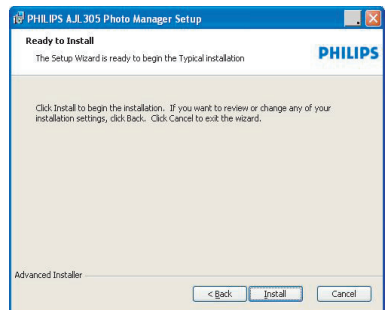
5. Click "I accept the terms in the License Agreement", and then click "Next".



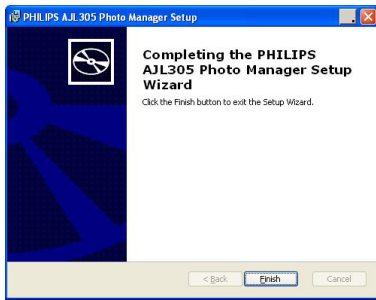
6. Select the directory where you want to install the software and then click "Next".



7. Click "Install" to start installation.



- Click "Finish" to exit.



## Step 2: Connecting to the PC

When you have finished installing the software,

- Double click the icon of AJL305 Photo Manager on the desktop or select the program from the start menu.
  - AJL305 Photo Manager starts to run.
- Connect the supplied mains adapter to the set's 9V DC jack and the plug into a wall outlet.
- Connect your AJL305 to a USB port on the PC with the supplied USB cable.

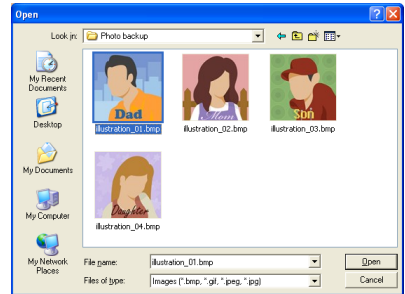
## Step 3: Loading Photos

- Click in one of the album and then select one photo.

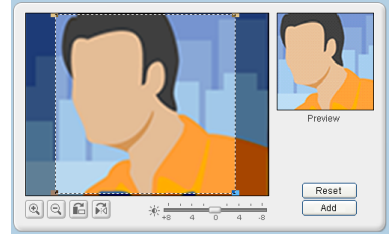


- Click "Load".

- The following window is displayed.



- Browse to the photo that you want to load.
- 



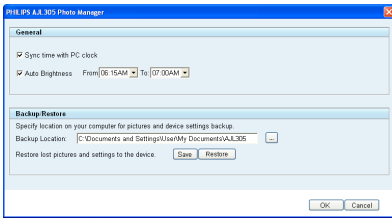
- Click the zoom tools to zoom the photo in or out.
- Click rotation tools to rotate or flip the photo.
- Drag the brightness tool bar to adjust the brightness.
- Move the selection area to the area that you want to display on AJL305.
- Click "Add" to add the photo into the album.
- Repeat step 1-9 to load photos for other albums.

### Tips:

You can store up to four photos in the five albums respectively.

## Step 4: Setting

You can synchronize time of the set with PC and set auto brightness function.



1. Check box "Sync time with PC real time clock".
2. Check box "Auto Brightness".
3. Select the start time and end time from the list.  
- Time is rounded to a smaller hour on the set.

### Tips:

You can set the timer to start at night and end in the morning so that AJL305 automatically dims at night and lights up in the morning.

You can back up the settings on the PC and restore the photos deleted by mistake.

1. Browse to a directory where you want to store the settings.
2. Click "Save" to save your settings.  
To restore photos,
  1. Click "Restore".
  2. Click "OK" to exit.

## Step 5: Synchronization

1. Click **SYNC** to synchronize AJL305 Photo Manager with AJL305.  
→ On screen display and AJL305 Photo Manager are in the same language.



### Warning:

Do not disconnect the power adapter of the set or disconnect the set from the PC during synchronization.

### Tips:

If synchronization is interrupted accidentally, plug in AJL305 again. **All five displays are blank. It is normal.**

- a. Connect the supplied mains adapter to the set's 9V DC jack and the plug into a wall outlet.
- b. Press **RESET**.
- c. Restart AJL305 Photo Manager.
- d. Click "Sync" to synchronize AJL305 with your PC again.

## 2. Setting clock and alarm

1. Press and hold **CLOCK** on the set to enter clock setting quickly.
2. Press and hold **ALARM** on the set to enter alarm setting quickly.

For detailed setting operations, refer to the supplied user manual.

## 3. Using voice memo

You can leave messages to each person in the album and playback the messages.

1. Press **PHOTO**.
2. Press **REC**.
3. Press **SELECT** below a certain person.
4. Press **REC**.
5. Speak near the MIC.
6. Press **REC** to end recording.
7. Press the button below the photo with **MEMO**.  
→ Message playback starts automatically.

## 4. Auto Tuning

You can make the set automatically scan FM stations and stores up to 15 preset stations by selecting **Radio Tuner** in **Setup** mode.

## 5. Using the stand

The set is equipped with a stand on the bottom panel. To set the unit for a different viewing angle, take the stand out, then place it back by reversing the side of the stand.