

Always there to help you

Register your product and get support at
www.philips.com/welcome

AZ420



User manual

PHILIPS

Contents

1	Important	2
	Safety	2
	Notice	2

2	Your CD Soundmachine	4
	Introduction	4
	What's in the box	4
	Overview of the main unit	5

3	Get started	7
	Install batteries	7
	Connect power	7

4	Play	8
	Play CD	8
	Play from USB devices	8
	Listen to an external device	8

5	Adjust sound	9
	Adjust volume level	9
	Enhance bass	9

6	Play options	10
	Select play modes	10
	Program tracks	10

7	Listen to the radio	11
	Tune to a radio station	11
	Program radio stations automatically	11
	Program radio stations manually	11
	Select a preset radio station	11

8	Product information	12
	Specifications	12

9	Troubleshooting	13
----------	------------------------	-----------

1 Important

Safety

- Read these instructions.
- Follow all instructions.
- Do not block any ventilation openings. Install in accordance with the manufacturer's instructions.
- Do not install near any heat sources such as radiators, heat registers, stoves, or other apparatus (including amplifiers) that produce heat.
- Protect the power cord from being walked on or pinched, particularly at plugs, convenience receptacles, and the point where they exit from the unit.
- Only use attachments/accessories specified by the manufacturer.
- Unplug this unit during lightning storms or when unused for long periods of time.
- Refer all servicing to qualified service personnel. Servicing is required when the unit has been damaged in any way, such as power-supply cord or plug is damaged, liquid has been spilled or objects have fallen into the apparatus, the unit has been exposed to rain or moisture, does not operate normally, or has been dropped.
- Battery usage CAUTION – To prevent battery leakage which may result in bodily injury, property damage, or damage to the unit:
 - Install all batteries correctly, + and - as marked on the unit.
 - Do not mix batteries (old and new or carbon and alkaline, etc.).
 - Remove batteries when the unit is not used for a long time.
- Batteries (battery pack or batteries installed) shall not be exposed to excessive heat such as sunshine, fire or the like.

- CAUTION: Danger of explosion if battery is incorrectly replaced. Replace only with the same or equivalent type.
- The unit shall not be exposed to dripping or splashing.
- Do not place any sources of danger on the unit (e.g. liquid filled objects, lighted candles).
- Where the MAINS plug or an appliance coupler is used as the disconnect device, the disconnect device shall remain readily operable.



Warning

- Never remove the casing of this apparatus.
- Never lubricate any part of this apparatus.
- Never place this apparatus on other electrical equipment.
- Keep this apparatus away from direct sunlight, naked flames or heat.
- Never look into the laser beam inside this apparatus.
- Ensure that you always have easy access to the power cord, plug or adaptor to disconnect this apparatus from the power.

Notice

Any changes or modifications made to this device that are not expressly approved by WOOX Innovations may void the user's authority to operate the equipment.

Disposal of your old product and batteries

Your product is designed and manufactured with high quality materials and components, which can be recycled and reused.

Never dispose of your product with other household waste. Please inform yourself about the local rules on the separate collection of electrical and electronic products and batteries. The correct disposal of these products helps prevent potentially negative consequences on the environment and human health.

Your product contains batteries, which cannot be disposed of with normal household waste.

Please inform yourself about the local rules on separate collection of batteries. The correct disposal of batteries helps prevent potentially negative consequences on the environment and human health.

Please visit www.recycle.philips.com for additional information on a recycling center in your area.

Environmental information

All unnecessary packaging has been omitted. We have tried to make the packaging easy to separate into three materials: cardboard (box), paper pulp (buffer) and polyethylene (bags, protective foam sheet.)

Your system consists of materials which can be recycled and reused if disassembled by a specialized company. Please observe the local regulations regarding the disposal of packaging materials, exhausted batteries and old equipment.



The making of unauthorized copies of copy-protected material, including computer programs, files, broadcasts and sound recordings, may be an infringement of copyrights and constitute a criminal offence. This equipment should not be used for such purposes.

Recording and playback of material might require consent. See Copyright Act 1956 and The Performer's Protection Acts 1958 to 1972.

This apparatus includes these labels:



Class II equipment symbol



This symbol indicates that the apparatus has a double insulation system.



The making of unauthorized copies of copy-protected material, including computer programs, files, broadcasts and sound recordings, may be an infringement of copyrights and constitute a criminal offence. This equipment should not be used for such purposes.



The USB-IF Logos are trademarks of Universal Serial Bus Implementers Forum, Inc.

Note

- The type plate is located on the bottom of the apparatus.

2 Your CD Soundmachine

What's in the box

Check and identify the contents of the package:

- Main unit
- AC power cord
- Short User Manual

Introduction

With this apparatus, you can enjoy music from audio discs, external devices, and listen to radio stations.

The apparatus offers you multiple sound effect settings that enrich sound with Dynamic Bass Boost (DBB).

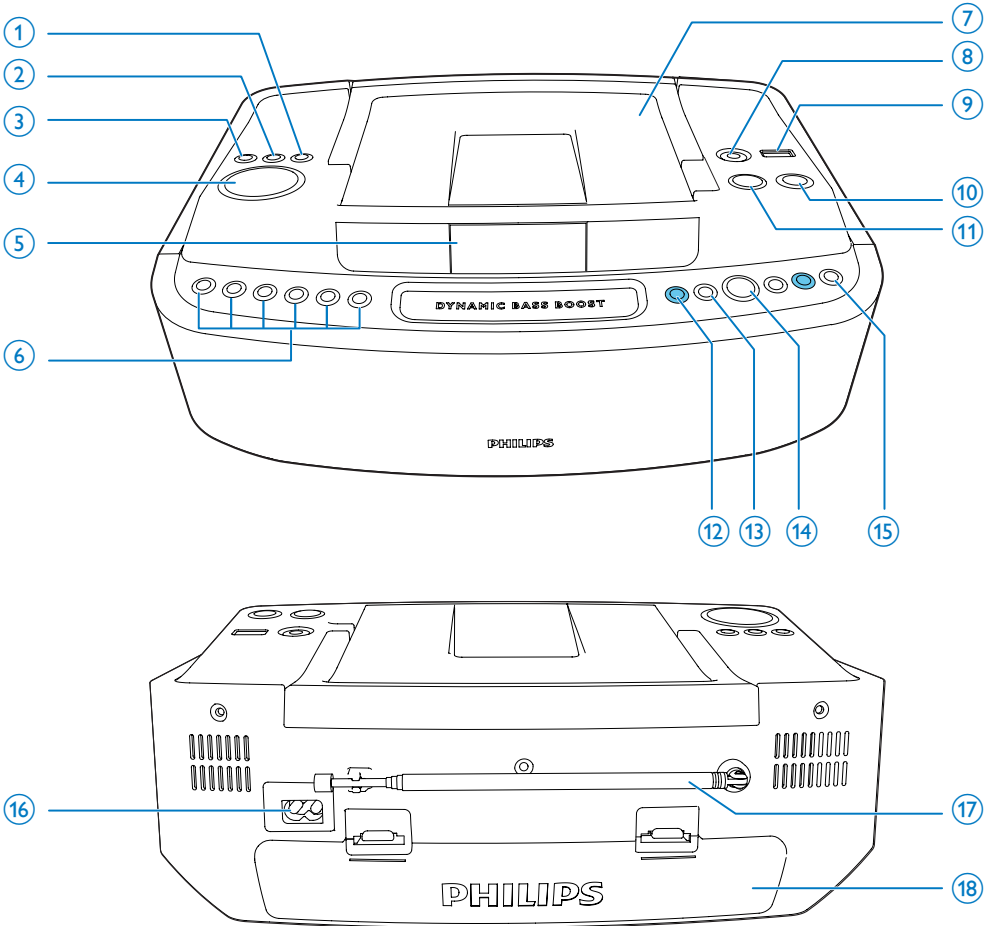
The apparatus supports the following media formats:



Note

- The type plate is located on the bottom of the apparatus.

Overview of the main unit



① MODE

- Select a play mode: REPEAT or SHUFFLE.

② PROG

- Program tracks and browse the program.

③ DBB

- Turn on/off dynamic bass boost.

④ -VOLUME +

- Adjust volume.

⑤ Display panel

- Display current status.

⑥ Number button ()

- Program tracks.
- Program radio stations.
- Select tracks or radio stations.


⑦ Disc compartment

⑧ AUDIO IN

- Jack for an external audio device.

⑨

- USB socket.

- ⑩ 
 - Turn on/off the unit.
- ⑪ **SOURCE**
 - Select a source (CD, USB, Audio in, FM).
- ⑫ **ALBUM /PRESET+/-**
 - Skip to the previous/next album.
 - Select a preset radio station.
- ⑬ **TUNING ◀◀ / ▶▶**
 - Tune to a radio station.
 - Skip to the previous/next track.
 - Search within a track.
- ⑭ **▶||**
 - Start or pause play.
- ⑮ **■**
 - Stop play.
 - Erase a program.
- ⑯ **AC MAINS**
 - Jack for the supplied AC power cord.
- ⑰ **FM ANTENNA**
 - Adjust FM reception.
- ⑱ **Battery compartment**

3 Get started

! Caution

- Use of controls or adjustments or performance of procedures other than herein may result in hazardous radiation exposure or other unsafe operation.

Always follow the instructions in this chapter in sequence.

If you contact Philips, you will be asked for the model and serial number of your apparatus. The model number and serial number are on the bottom of your apparatus. Write the numbers here:

Model No. _____

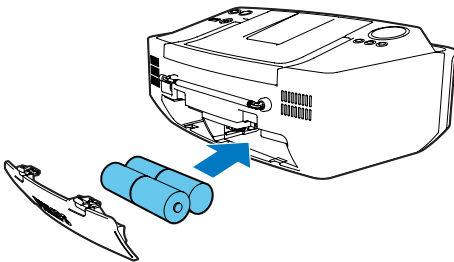
Serial No. _____

Install batteries

☰ Note

- You can use both batteries and AC power as power supply of this apparatus.
- Batteries are not supplied with the accessories.

- 1 Open the battery compartment.
- 2 Insert 4 batteries (type: R-14, UM-2 or C-cells) with correct polarity (+/-) as indicated.
- 3 Close the battery compartment.



Connect power

! Warning

- Risk of product damage! Ensure that the power supply voltage corresponds to the voltage printed on the back or the underside of the apparatus.
- Risk of electric shock! When you disconnect the AC power, always pull the plug from the socket. Never pull the cord.

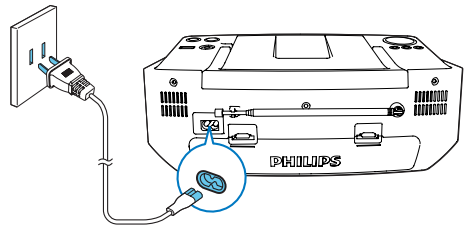
☰ Note

- Install the apparatus near the power supply socket and where the power plug can be easily reached.

- 1 Connect the AC power cord to the AC input jack on the apparatus and to the power supply socket.
 - To switch the apparatus off completely, disconnect the AC power cord from the power supply socket.

☰ Note

- To save energy: after use, turn off the apparatus.



Turn on

Press ϕ .

- ↳ The unit switches to the last selected source.

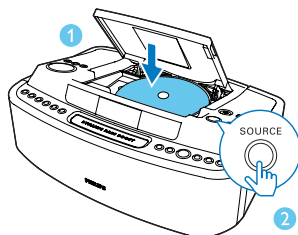
Switch to standby mode:

- The unit switches to standby mode automatically when there it is idle for over 15 minutes.

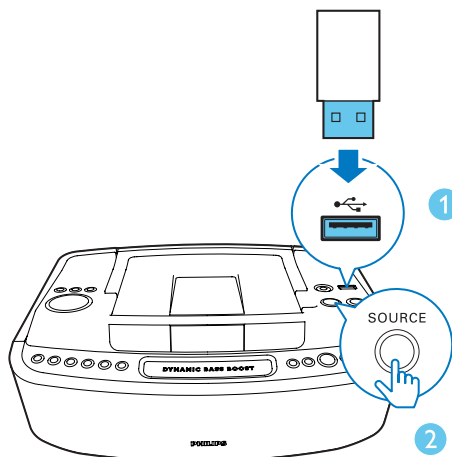
4 Play

Play CD

- 1 Open the disc compartment and insert a disc with the printed side facing up.
- 2 Press **SOURCE** repeatedly to select the CD source.
 - ↳ ● Displayed on the panel.
 - To pause/resume play, press ►||.
 - To stop play, press ■.
 - To skip to a track, press ◀◀ / ▶▶.
 - To search within a track, press and hold ◀◀ / ▶▶. Release to resume normal play.
 - To select an album, press **ALBUM +/-**.



- Press ◀◀ / ▶▶ to select a file.
- Press ■ to stop play.
- To search within a track, press and hold ◀◀ / ▶▶. Release to resume normal play.
- To select an album, press **ALBUM +/-**.



Listen to an external device

You can also listen to an external audio device through this unit.

- 1 Connect the **AUDIO IN** cable to
 - the **AUDIO IN** socket on this unit.
 - the headphone socket on an external device.
- 2 Press **SOURCE** repeatedly to select **AUDIO IN** source.
 - ↳ ● displayed on the panel.
- 3 Start playback on the external device. (See the user manual of the device.)

Play from USB devices

Note

- Ensure that the USB device contains playable audio contents for supported formats.
- The USB terminal can be loaded with 700 mA.

- 1 Insert the USB connector on the device into the USB socket.
- 2 Press **SOURCE** repeatedly to select the **USB** source.
 - ↳ ● displayed on the panel.
 - Press ►|| to pause/resume play.

5 Adjust sound

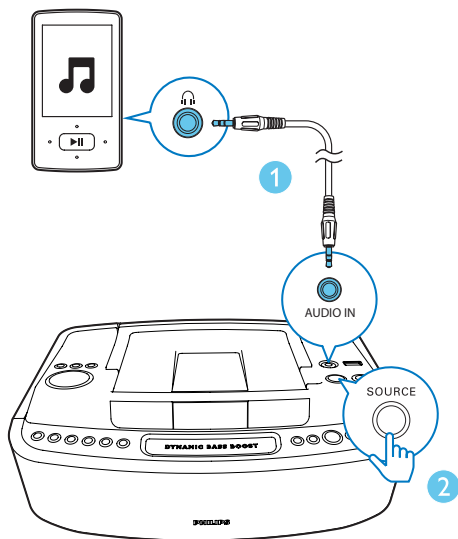
Adjust volume level

During play, press **-VOLUME +** to decrease/increase the volume level.

Enhance bass

During play, turn on or off the **DBB**.

↳ If DBB is activated, DBB is displayed.



6 Play options

- 4 Repeat step 3 to program more tracks.
- 5 Press ►|| to play the programmed tracks.
 - ↳ During play, [PROG] (program) is displayed.
 - To erase the program, press ■ twice.

Select play modes

- 1 Press **MODE** repeatedly to select a play mode:
 - **[REP]** (repeat) – repeat a track
 - **[REP ALL]** (repeat all) - repeat an entire CD/program
 - **[SHUF]** (shuffle) - play tracks randomly
- 2 To return to normal play, press **MODE** repeatedly until play mode icons are no longer displayed

Program tracks



Note

- You can program a maximum of 10 tracks.

- 1 In CD/USB mode, press ■ to stop playback.
- 2 Press **PROG** to activate the program mode.
 - ↳ [PROG] (program) starts to blink.
 - For MP3 tracks, press **ALBUM +/-** to select an album.
- 3 Press **◀◀ / ▶▶** or number buttons to select a track, then press **PROG** to confirm.
 - Track 1-5: Press **1 2 3 4 5** to select the corresponding track.
 - Track 6-10: 1. Press **5**. ("5" flashes on the display panel)
 2. Press a second number button within 5 seconds to select the total track number:
(For example, if you press **5** and then **8**, track 8 will be selected.)

7 Listen to the radio

Tune to a radio station

Note

- For optimal reception, fully extend and adjust the position of the FM antenna.

- 1 Press **SOURCE** repeatedly to select FM mode.
↳ **FM** displayed on the panel.
- 2 Press and hold **◀▶** for more than 2 seconds.
↳ The radio tunes to a station with strong reception automatically.
- 3 Repeat step 2 to tune to more stations.
 - To tune to a weak station, press **◀▶** repeatedly until you find optimal reception.

Program radio stations automatically

Note

- You can program a maximum of 10 FM radio stations.

- In tuner mode, press and hold **PROG** for 2 seconds to activate automatic program mode.
- ↳ **[AUTO]** (auto) is displayed.
 - ↳ All available stations are programmed in the order of waveband reception strength.
 - ↳ The first programmed radio station is broadcast automatically.

Program radio stations manually

Note

- You can program a maximum of 10 FM radio stations.

- 1 Tune to a radio station.
- 2 Press **PROG** to activate program mode.
↳ **[PROG]** (program) blinks on the display.
- 3 Press **◀▶** or number buttons to allocate a number to this radio station, then press **PROG** to confirm.
 - Station 1-5: Press **1 2 3 4 5** to select corresponding stations.
 - Track 6-10: 1. Press **5**. ("5" flashes on the display panel)

2. Press a second number button within 5 seconds to select the total station number.

(For example, if you press **5** and then **8**, station 8 will be selected.)

 - ↳ The preset number and the frequency of the preset station are displayed.
- 4 Repeat the above steps to program other stations.

Note

- To overwrite a programmed station, store another station in its place.

Select a preset radio station

In tuner mode, press **◀▶** or number buttons to select a preset radio station.

8 Product information

Note

- Product information is subject to change without prior notice.

Specifications

General

Power Supply	100 - 240V~, 50/60 Hz; or DC 4 X 1.5V \equiv / UM2/SIZE"C"/R14
Sound Power Output	1.7 W x 2 RMS
Operation Power Consumption	7 W
Standby Power Consumption	<0.5 W
Dimensions	- Main Unit 320 x 130 x 230 mm (W x H x D)
Weight	- Main Unit 1.5 kg

Disc

Laser Type	Semiconductor
Disc Diameter	12 cm/8 cm
Support Disc	CD-DA, CD-R, CD-RW, MP3-CD
Audio DAC	24 Bits / 44.1 kHz
Total Harmonic Distortion	<10%
Frequency Response	63 Hz -20 kHz
S/N Ratio	>55 dB

Tuner

Tuning Range	FM: 87.5 - 108 MHz
Tuning grid	50 kHz (FM);
Total Harmonic Distortion	<10%
Signal to Noise Ratio	>50 dB

- ISO9660, Joliet
- Maximum title number: 999 (depending on file name length)
- Maximum album number: 99
- Supported sampling frequencies: 32 kHz, 44.1kHz, 48 kHz
- Supported Bit-rates: 32~256 (kbps), variable bit rates

Compatible USB devices:

- USB flash memory (USB2.0)
- USB flash players (USB2.0)
- memory cards (requires an additional card reader to work with this apparatus)

Supported formats:

- USB or memory file format FAT12, FAT16, FAT32 (sector size: 512 bytes)
- MP3 bit rate (data rate): 32-320 Kbps and variable bit rate
- Directory nesting up to a maximum of 8 levels
- Number of albums/ folders: maximum 99
- Number of tracks/titles: maximum 999
- File name in Unicode UTF8 (maximum length: 16 bytes)

Unsupported formats:

- Empty albums: an empty album is an album that does not contain MP3/WMA files, and is not be shown in the display.
- Unsupported file formats are skipped. For example, Word documents (.doc) or MP3 files with extension .dlf are ignored and not played.
- AAC, WAV, PCM audio files

- DRM protected WMA files (.wav, .m4a, .m4p, .mp4, .aac)
- WMA files in Lossless format

Clean the cabinet

- Use a soft cloth slightly moistened with a mild detergent solution. Do not use a solution containing alcohol, spirits, ammonia or abrasives.

Clean discs

- When a disc becomes dirty, clean it with a cleaning cloth. Wipe the disc from the centre out.



- Do not use solvents such as benzene, thinner, commercially available cleaners, or antistatic spray intended for analogue records.

Clean the disc lens

- After prolonged use, dirt or dust may accumulate at the disc lens. To ensure good play quality, clean the disc lens with Philips CD lens cleaner or any commercially available cleaner. Follow the instructions supplied with cleaner.

9 Troubleshooting



Warning

- Never remove the casing of this device.

To keep the warranty valid, never try to repair the system yourself.

If you encounter problems when using this device, check the following points before requesting service. If the problem remains unsolved, go to the Philips Web page (www.philips.com/support). When you contact Philips, make sure that the device is nearby and the model number and serial number are available.

No power

- Ensure that the Mains cord is connected securely.
- Ensure that there is power at the AC Mains.
- Ensure that the batteries are inserted correctly.

No sound or poor sound

- Adjust the volume.

No response from the unit

- Disconnect and reconnect the AC power plug, then turn on the system again.
- As a power-saving feature, the unit switches off automatically 15 minutes after track play reaches the end and no control is operated.

USB device not supported

- The USB device is incompatible with the apparatus. Try another one.

No disc detected

- Insert a disc.
- Check if the disc is inserted upside down.
- Wait until the moisture condensation at the lens has cleared.
- Replace or clean the disc.
- Use a finalized CD or correct format disc.

Poor radio reception

- Increase the distance between the unit and your TV or VCR.
- Fully extend the FM antenna.
- Connect an outdoor FM antenna instead.



Specifications are subject to change without notice.

This product has been manufactured by, and is sold under the responsibility of WOOX Innovations (Shanghai) Commercial Company Ltd., and WOOX Innovations (Shanghai) Commercial Company Ltd., is the warrantor in relation to this product. Philips and the Philips Shield Emblem are registered trademarks of Koninklijke Philips N.V. and are used under license.

AZ420_93_UM_V2.0

