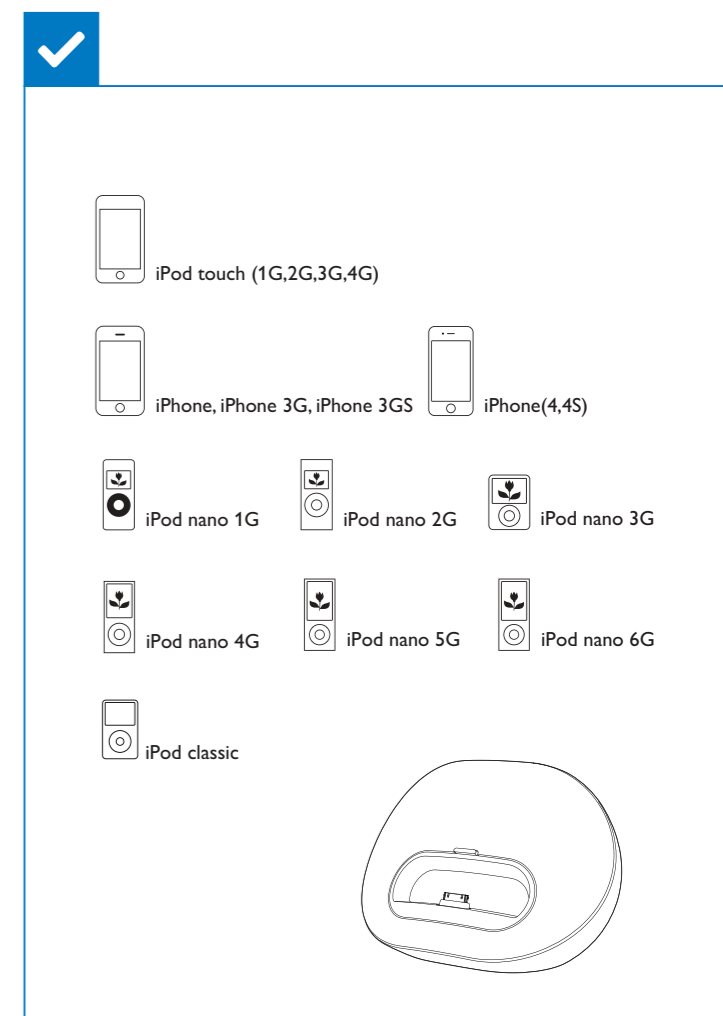
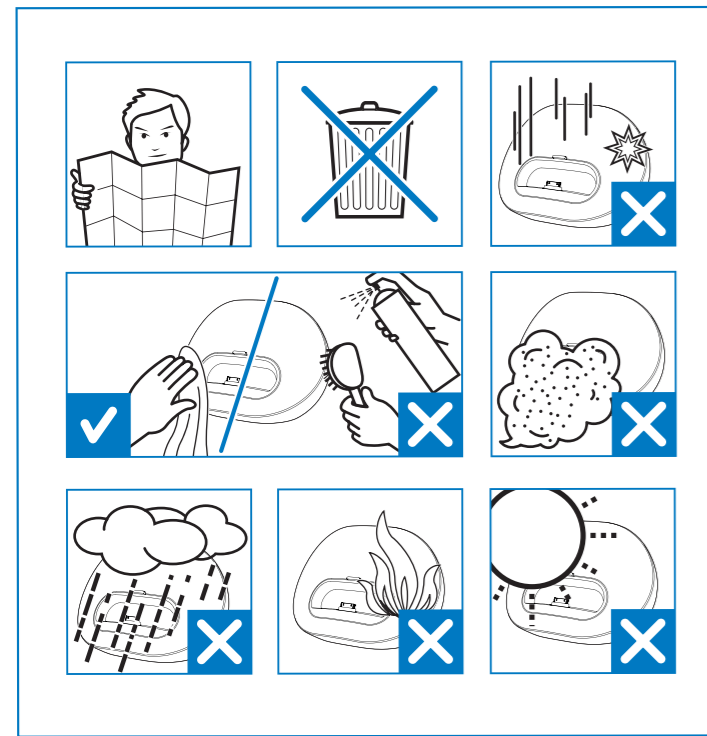
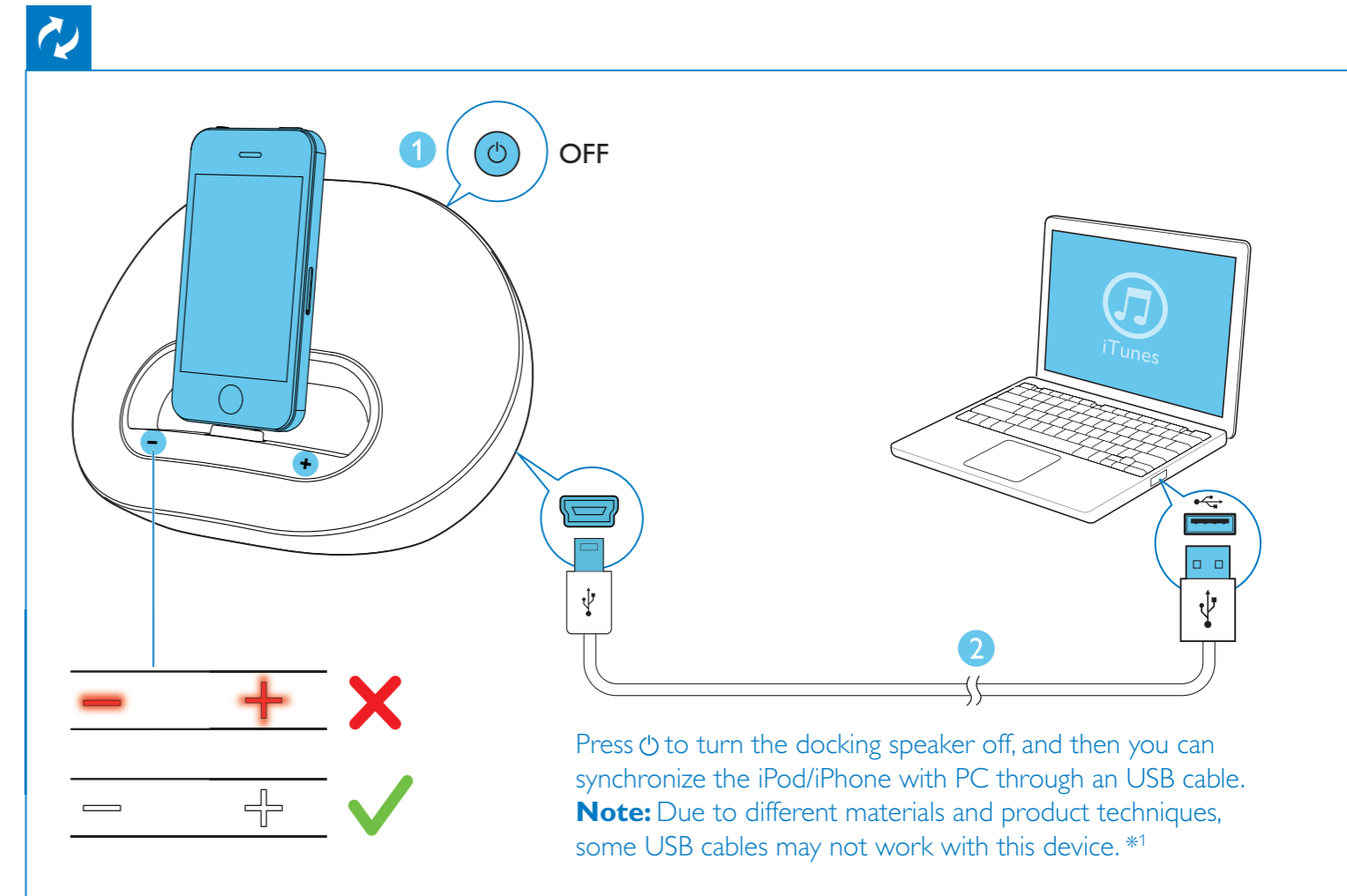
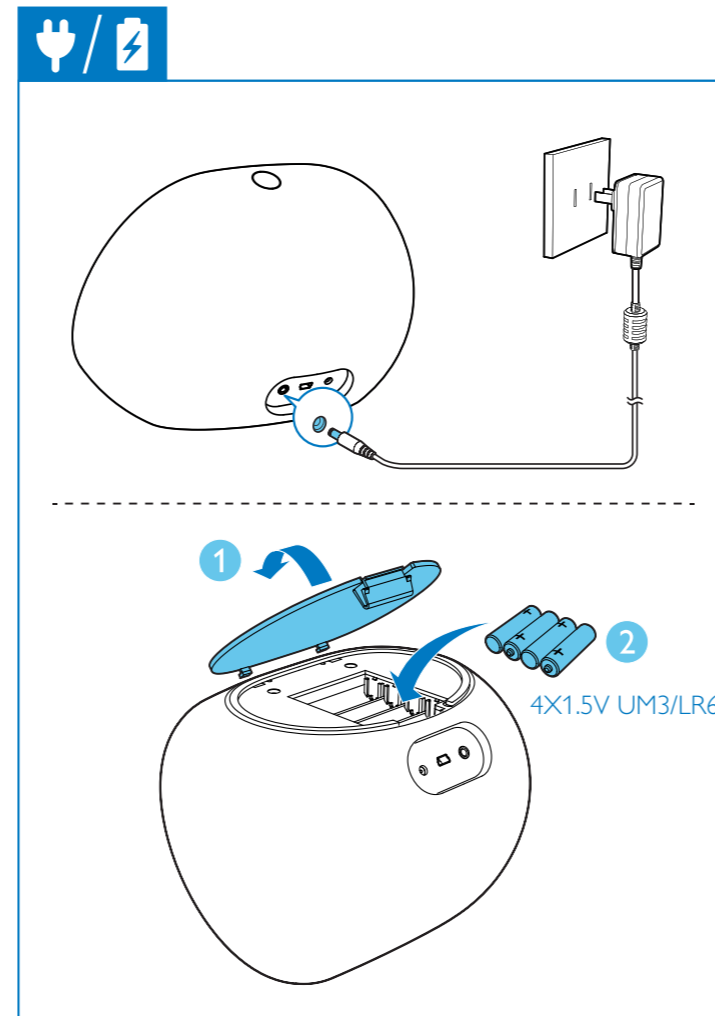
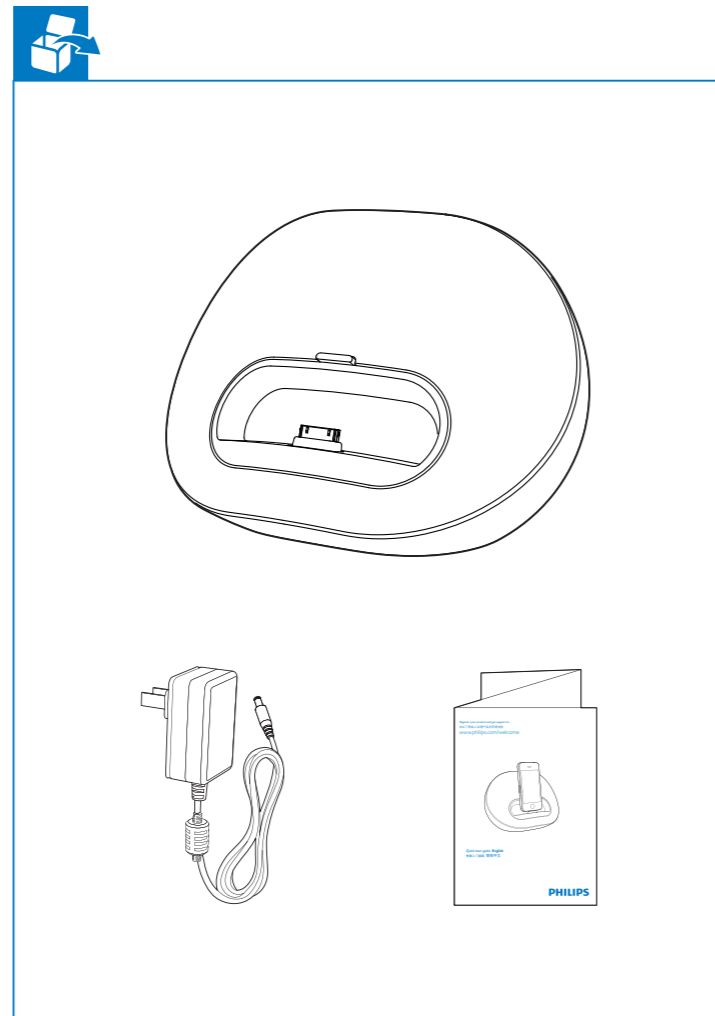


DS3100 (White 白)  
 DS3110 (Black 黑)



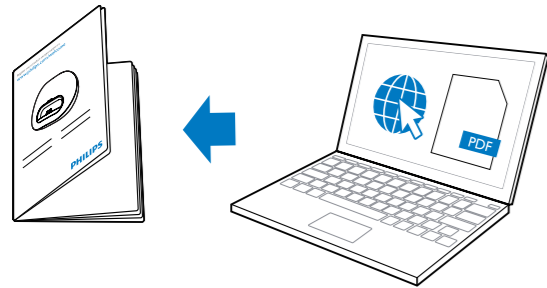
Quick start guide **English**  
 快速入门指南 **简体中文**

**PHILIPS**





www.philips.com/support



To get the detailed instructions for use, visit www.philips.com/welcome.

详细的使用说明请登录 www.philips.com/welcome。

- \*1 Press O to turn the docking speaker off, and then you can synchronize the iPod/iPhone with PC through an USB cable.
Note: Due to different materials and product techniques, some USB cables may not work with this device.
\*2 You can only charge your iPod/iPhone when the docking speaker is powered by AC supply.
\*3 If the docking speaker is powered by batteries, the volume is lower than that by AC supply.
\*4 For software upgrade of the docking speaker, refer to the online user manual.

Specifications

Table with specifications: Amplifier (Rated Output Power: 2 X 5 W RMS), General information (Power supply: AC Power, Model: AS190-090-AB190), Battery (4 x AA batteries), Operation Power Consumption (<10 W), Standby Power Consumption (<0.5 W), Max. load for iPod/iPhone (5 V === 1 A), Dimensions (224 x 162 x 120 mm), Weight (1.1 kg).

- \*1 按 O 以关闭扩充扬声器，然后您便可透过 USB 线缆将 iPod/iPhone 与电脑同步。注意：因材质与产品技术有别，部分 USB 线缆可能无法与此装置搭配使用。
\*2 只有当扩充扬声器是使用 AC 电源时，才能为 iPod/iPhone 充电。
\*3 如果扩充扬声器是使用电池电力，音量会比使用 AC 电源时小。
\*4 如需为扩充扬声器进行软件升级，请参阅网上使用手册。

规格

Table with specifications: 扩大机 (额定输出功率: 2 X 5 W RMS), 一般资讯 (电源供应: AC 电源, 机型: AS190-090-AB190), 电池 (4 个 AA 电池), 操作耗电量 (<10 W), 待机耗电量 (<0.5 W), 最大电荷 (5 V === 1 A), 尺寸 (224 x 162 x 120 厘米), 重量 (1.1 公斤).

1 Important

- Read these instructions.
Heed all warnings.
Follow all instructions.
Do not use this apparatus near water.
Do not block any ventilation openings.
Do not install near any heat sources such as radiators, heat registers, stoves, or other apparatus (including amplifiers) that produce heat.
Protect the power cord from being walked on or pinched, particularly at plugs, convenience receptacles, and the point where they exit from the apparatus.
Only use attachments/accessories specified by the manufacturer.
Unplug this apparatus during lightning storms or when unused for long periods of time.
Refer all servicing to qualified service personnel.
Battery usage CAUTION - To prevent battery leakage which may result in bodily injury, property damage, or damage to the unit:
Install all batteries correctly, + and - as marked on the unit.
Do not mix batteries (old and new or carbon and alkaline, etc.).
Remove batteries when the unit is not used for a long time.
Batteries (battery pack or batteries installed) shall not be exposed to excessive heat such as sunshine, fire or the like.
Apparatus shall not be exposed to dripping or splashing.
Do not place any sources of danger on the apparatus (e.g. liquid filled objects, lighted candles).
The USB socket is for data transmission only.
Where the plug of the Direct Plug-in Adapter is used as the disconnect device, the disconnect device shall remain readily operable.

Warning

- Never remove the casing of this apparatus.
Never place this apparatus on other electrical equipment.
Ensure that you always have easy access to the power cord, plug or adaptor to disconnect the apparatus from the power.

2 Notice

Any changes or modifications made to this device that are not expressly approved by Philips Consumer Lifestyle may void the user's authority to operate the equipment.



"Made for iPod" and "Made for iPhone" mean that an electronic accessory has been designed to connect specifically to iPod or iPhone respectively, and has been certified by the developer to meet Apple performance standards.

Disposal of your old product and batteries

Your product is designed and manufactured with high quality materials and components, which can be recycled and reused.
Never dispose of your product with other household waste.
Your product contains batteries, which cannot be disposed of with normal household waste.
Please visit www.recycle.philips.com for additional information on a recycling center in your area.

Environmental information

All unnecessary packaging has been omitted. We have tried to make the packaging easy to separate into three materials: cardboard (box), polystyrene foam (buffer) and polyethylene (bags, protective foam sheet).

Note

- The type plate is located on the bottom of the apparatus.

1 注意事项

- 阅读这些说明。
注意所有警告。
遵循所有说明。
不要在靠近水的地方使用本装置。
不要堵塞任何通风口。
不要在任何热源附近安装。
防止电源线被踩踏或挤压。
仅使用制造商指定的附件/配件。
在雷电天气期间或长期不用的情况下，请拔下本装置的电源插头。
所有维修均应由合格的维修人员来执行。
电池使用注意事项 - 为防止电池泄漏而造成人身伤害、财产损失或装置损坏，请：
按照装置上标明的 + 极和 - 极，正确安装所有电池。
请勿混合使用电池。
若打算长期不用本装置，应取出电池。
不可将电池置于高温环境。
切勿将本装置置于漏水或溅水环境下。
不要将任何危险源放在本装置上。
USB 插孔仅用于数据传输。
如果将直插式适配器的插头用作断开设备，则断开设备应可以随时使用。

警告

- 切勿拆下本产品的外壳。
切勿将本装置放在其它电器设备上。
确保始终可轻易地接触到电源线、电源插头或适配器，以便于将本装置从电源上断开。

2 注意

如果用户未经 Philips 优质生活部门的明确许可而擅自对此设备进行更改或修改，则可能导致其无权操作此设备。



"Made for iPod" and "Made for iPhone" 表示电子附件专为连接 iPod 或 iPhone 而设计，并经开发人员认证，符合 Apple 性能标准。

旧产品和电池的处理

本产品采用可回收利用的高性能材料和组件制造而成。
切勿将本产品与其它生活垃圾一起处理。
本产品所含的电池不能与一般的生活垃圾一同弃置。
关于您所在地区回收中心的更多信息，请访问 www.recycle.philips.com。

环境信息

已省去所有不必要的包装。我们努力使包装易于分为三种材料：纸板（盒）、泡沫塑料（缓冲物）和聚乙烯（袋、保护性泡沫片）。
您的系统包含可回收利用的材料（如果由专业公司拆卸）。请遵守当地有关包装材料、废电池和旧设备的处理的规定。

注

- 型号铭牌位于本设备的底部。

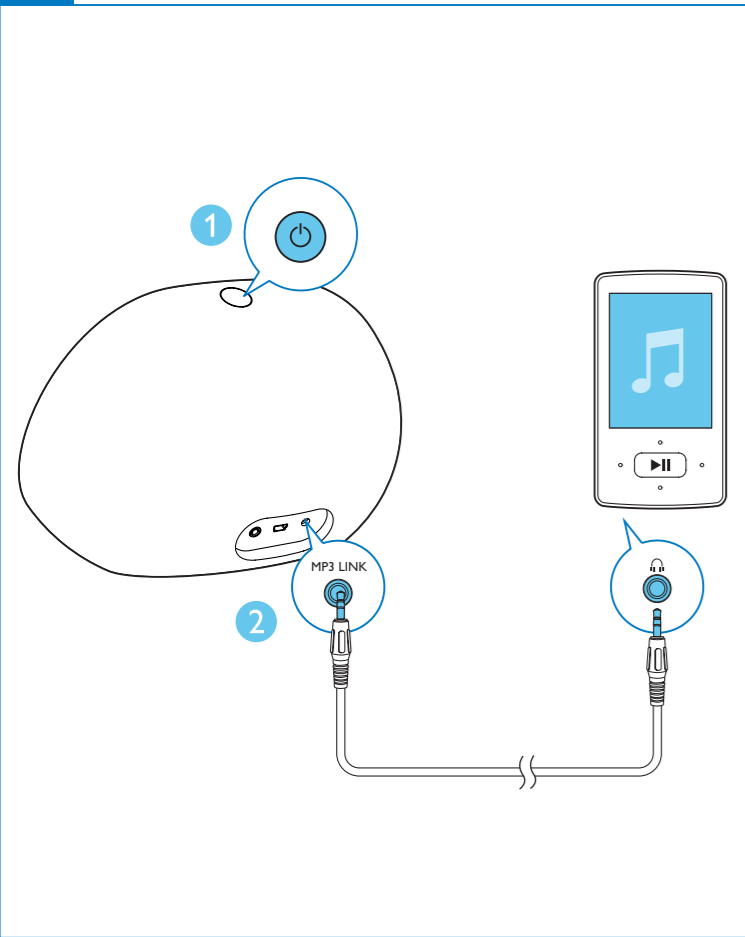


Table with hazardous substances: Name of the Parts, Housing, Loudspeakers, PWBs, Accessories. Hazardous/toxic Substance: 六价铬, 镉, 汞, 铅, 多溴联苯, 多溴二苯醚.

O: 表示该有毒有害物质在该部件所有均质材料中的含量均在SJ/T11363 - 2006 标准规定的限量要求以下。
O: Indicates that this toxic or hazardous substance contained in all of the homogeneous materials for this part is below the limit requirement in SJ/T11363 - 2006.

x: 表示该有毒有害物质至少在该部件的某一均质材料中的含量超出SJ/T11363 - 2006 标准规定的限量要求。

X: Indicates that this toxic or hazardous substance contained in at least one of the homogeneous materials used for this part is above the limit requirement in SJ/T11363 - 2006.



环保使用期限 Environmental Protection Use Period

This logo refers to the period ( 10 years ) during which the toxic or hazardous substances or elements contained in electronic information products will not leak or mutate so that the use of these [substances or elements] will not result in any severe environmental pollution, any bodily injury or damage to any assets.