

Always there to help you

HTB3510

Register your product and get support at
www.philips.com/welcome



Quick start guide

PHILIPS



EN Before using your product, read all accompanying safety information

CS Před použitím produktu si přečtěte doprovodné bezpečnostní informace

DA Læs alle medfølgende sikkerhedsoplysninger, inden du tager produktet i brug

DE Lesen Sie vor Verwendung dieses Produkts alle begleitenden Sicherheitsinformationen

EL Πριν χρησιμοποιήσετε το προϊόν, διαβάστε όλες τις παρεχόμενες πληροφορίες ασφάλειας

ES Antes de usar el producto, lea toda la información de seguridad adjunta

FI Lue kaikki turvallisuustiedot ennen tuotteen käyttöä

FR Avant d'utiliser votre produit, lisez l'intégralité des consignes de sécurité jointes

HU A termék használatá előtt alaposan olvassa el a mellékelt biztonsági tudnivalókat

IT Prima di utilizzare il prodotto, leggere tutte le relative informazioni sulla sicurezza

NL Lees voordat u het product gaat gebruiken eerst alle bijbehorende veiligheidsinformatie

NO Lees voordat u het product gaat gebruiken eerst alle bijbehorende veiligheidsinformatie

PL Przed rozpoczęciem korzystania z produktu należy zapoznać się z informacjami dotyczącymi bezpieczeństwa

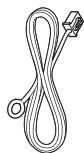
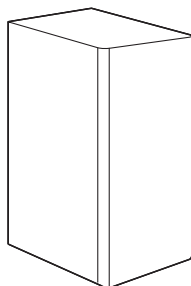
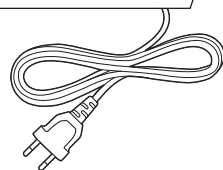
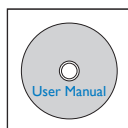
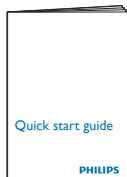
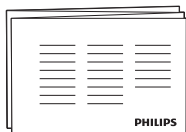
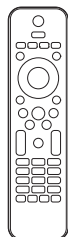
PT Antes de utilizar o produto, leia todas as informações de segurança que o acompanham

RO Înainte de a utiliza acest produs, citiți toate informațiile de siguranță care îl însoțesc

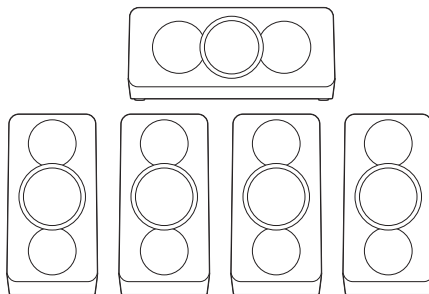
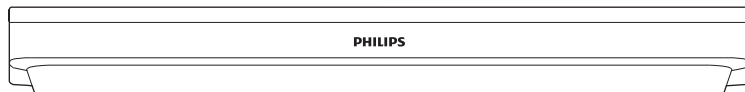
SK Pred použitím produktu si prečítajte všetky sprievodné bezpečnostné informácie maklumat keselamatan yang disertakan

SV Innan du använder produkten ska du läsa all tillhörande säkerhetsinformation

TR Ürününüzü kullanmadan önce ilgili tüm güvenliğin bilgilerini okuyun



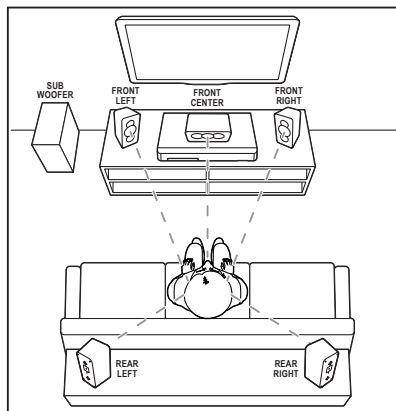
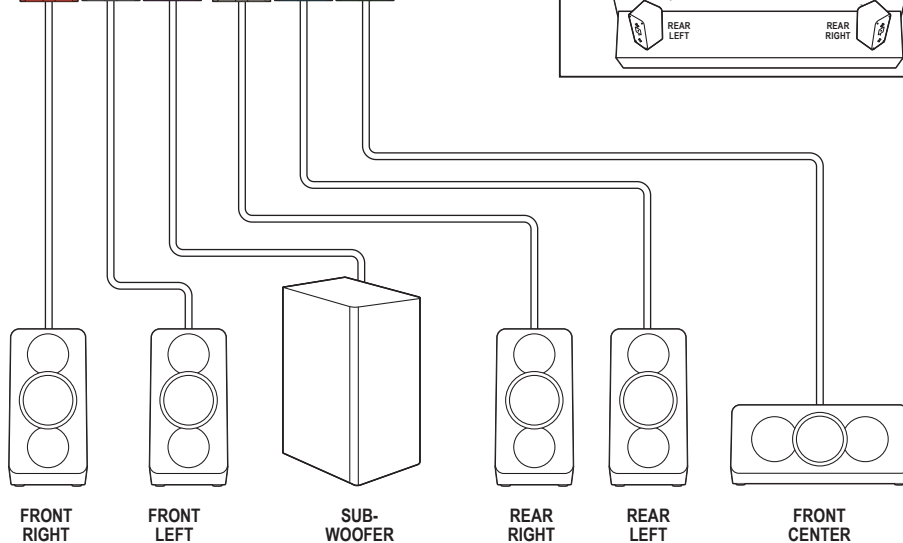
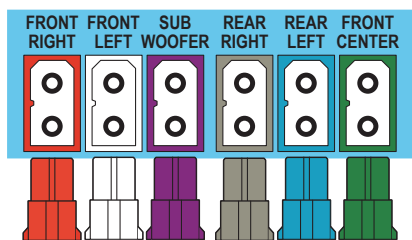
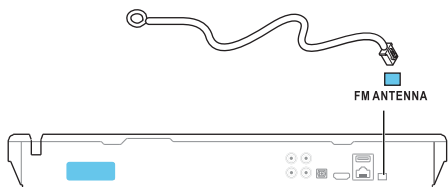
FM Antenna



1

- EN** Connect the home theater
- CS** Připojte domácí kino
- DA** Tilslut hjemmebiografen
- DE** Anschließen des Home Entertainment-Systems
- EL** Συνδέστε το home cinema
- ES** Conecta el sistema de cine en casa
- FI** Kotiteatterin liitännät
- FR** Connecter les enceintes au Home Cinéma
- HU** A házimozi csatlakoztatása

- IT** Collegamento del sistema Home Theater
- NL** Sluit de home cinema aan
- NO** Koble til hjemmekinoanlegget
- PL** Podłączenie zestawu kina domowego
- PT** Efectuar as ligações ao sistema de cinema em casa
- RO** Conectați sistemul home theater
- SK** Pripojenie k domácemu kinu
- SV** Anslut hemmabiosystemet
- TR** Ev sinemasını bağlayın



2

EN Connect to TV in one of these ways

CS Připojení k televizoru proveďte jedním z následujících způsobů

DA Tilslut til TV på en af følgende måder

DE Herstellen einer Verbindung mit dem Fernseher über einer dieser Möglichkeiten

EL Συνδεθείτε στην τηλεόραση με έναν από τους παρακάτω τρόπους

ES Conexión al televisor de una de estas maneras

FI Liitä televisioon jommallakummalla tavalla

FR Connectez-vous au téléviseur via l'une de ces méthodes

HU Csatlakoztassa a tv-készülékhez az alábbi módok egyike szerint

IT Eseguì il collegamento al TV in uno dei modi indicati di seguito

NL Maak op een van de volgende manieren verbinding met de TV

NO Koble til TV-en på en av følgende måter

PL Podłącz do telewizora przy użyciu jednej z tych metod

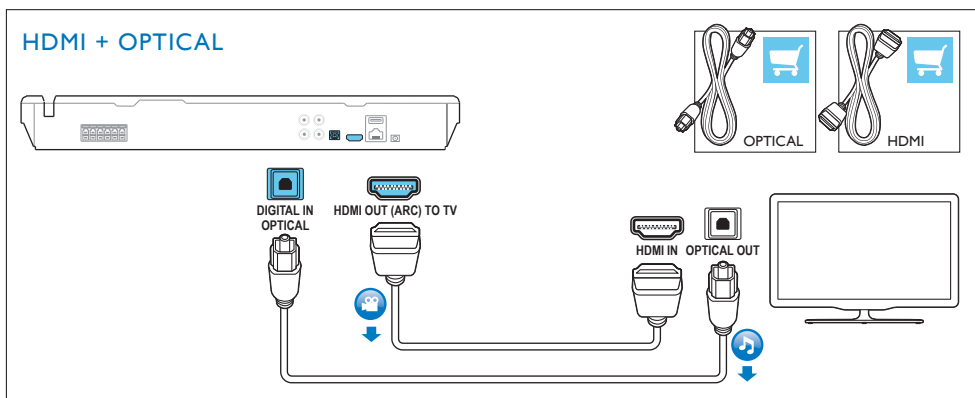
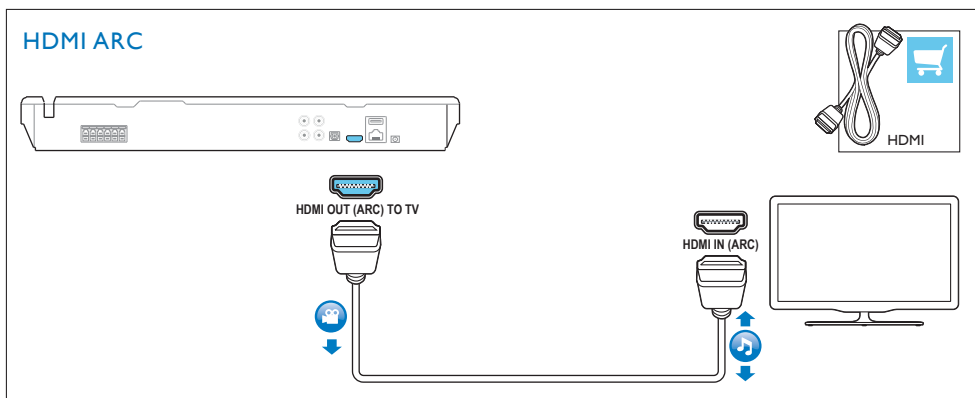
PT Ligar ao televisor de uma destas formas

RO Conectați-vă la televizor într-unul din aceste moduri

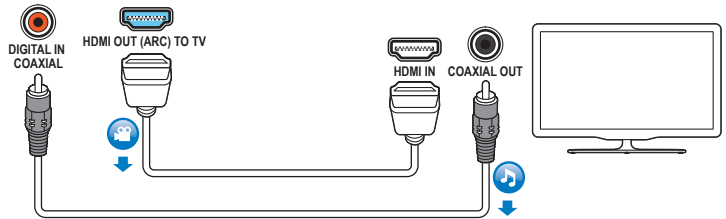
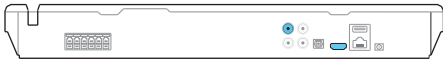
SK Pripojte zariadenie k televizoru jedným z týchto spôsobov

SV Anslut till TV:n på något av följande sätt

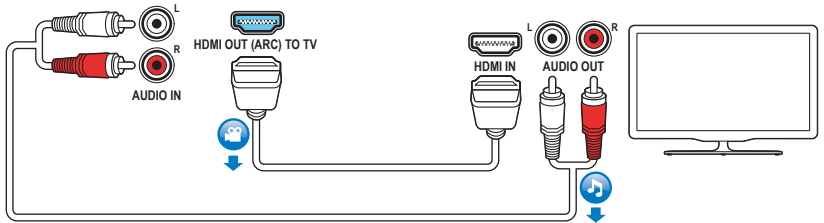
TR Aşağıdaki yöntemlerden biriyle TV'ye bağlanın



HDMI + COAXIAL



HDMI + AUDIO L/R

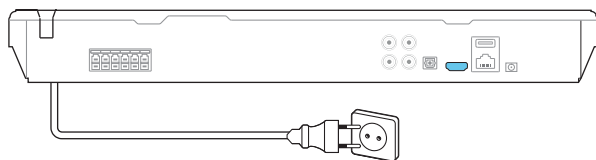


3

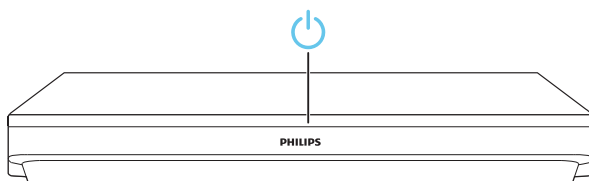
- EN** Switch on the home theater
- CS** Zapněte domácí kino
- DA** Tænd for hjemmteateret
- DE** Einschalten des Home Entertainment-Systems
- EL** Ενεργοποιήστε το home cinema
- ES** Enciende el sistema de cine en casa
- FI** Virran kytkeminen kotiteatteriin
- FR** Mettre sous tension le Home Cinéma
- HU** A házimozi bekapcsolása
- IT** Accensione del sistema Home Theater

- NL** Schakel de home cinema in
- NO** Slå på hjemmekinoanlegget
- PL** Włączenie zestawu kina domowego
- PT** Ligar o sistema de cinema em casa
- RO** Porniți sistemul home theater
- SK** Zapnutie domáceho kina
- SV** Sätt på hemmabiosystemet
- TR** Ev sinemasını açın

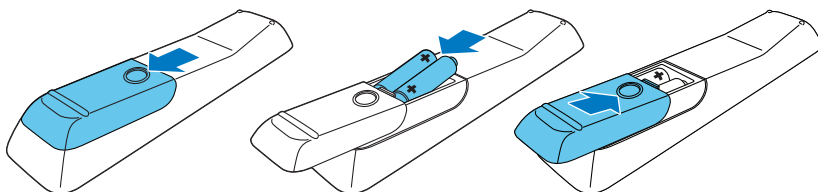
1



2

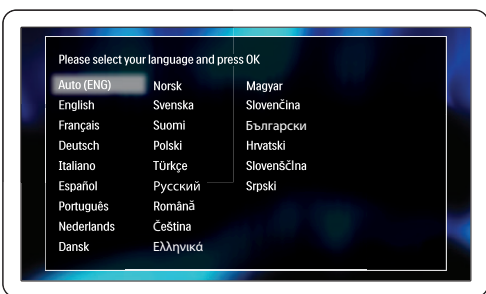
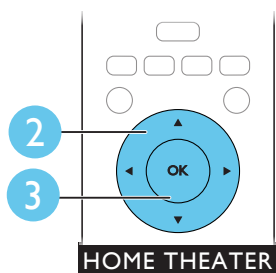
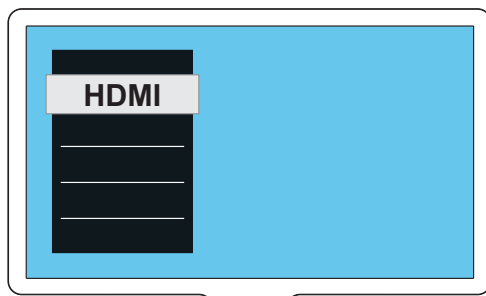
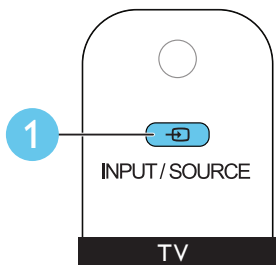


3



4

- EN** Complete the first time setup
CS Dokončíte jste nastavení při prvním zapnutí
DA Fuldfør den indledende opsætning
DE Abschließen der Ersteinrichtung
EL Ολοκληρώστε τη ρύθμιση για πρώτη φορά
ES Finaliza la configuración inicial
FI Ensiasennuksen suorittaminen loppuun
FR Effectuer la configuration initiale
HU Az első üzembe helyezés
IT Completamento della configurazione iniziale
NL Volttoo de eerste installatie
NO Fullføre den første konfigureringen
PL Pierwsza konfiguracja
PT Executar a configuração inicial
RO Realizați prima configurare
SK Dokončenie prvého nastavenia
SV Slutför förstagångsinställningen
TR İlk kullanım öncesi kurulumunu tamamlayın



5

EN Use your home theater

CS Použít domácího kina

DA Brug af din hjemmebiograf

DE Verwenden des Home Entertainment-Systems

EL Χρησιμοποιήστε το home cinema

ES Uso del sistema de cine en casa

FI Kotiteatterin käyttäminen

FR Utiliser votre Home Cinéma

HU A házimozi használat

IT Utilizzo del sistema HomeTheater

NL Uw home cinema bedienen

NO Bruke hjemmekinoanlegget

PL Korzystanie z zestawu kina domowego

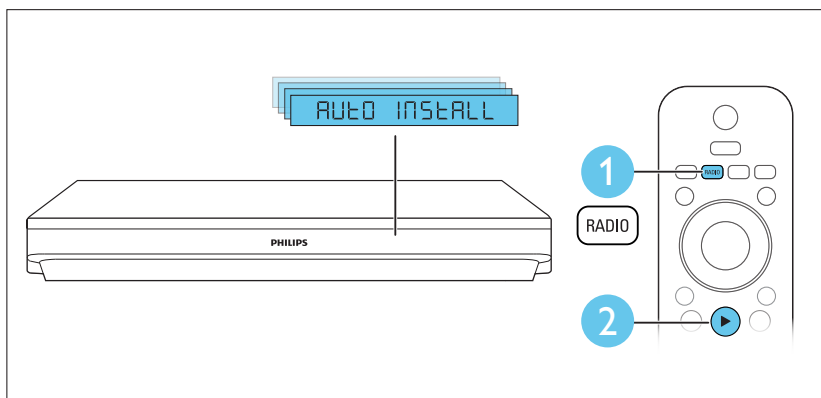
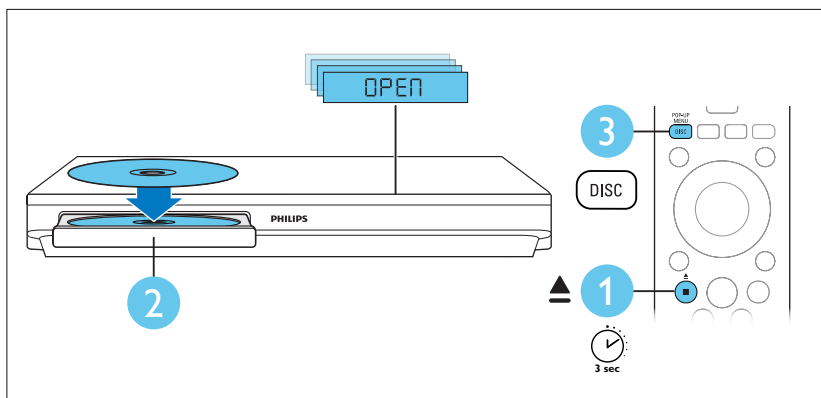
PT Utilizar o sistema de cinema em casa

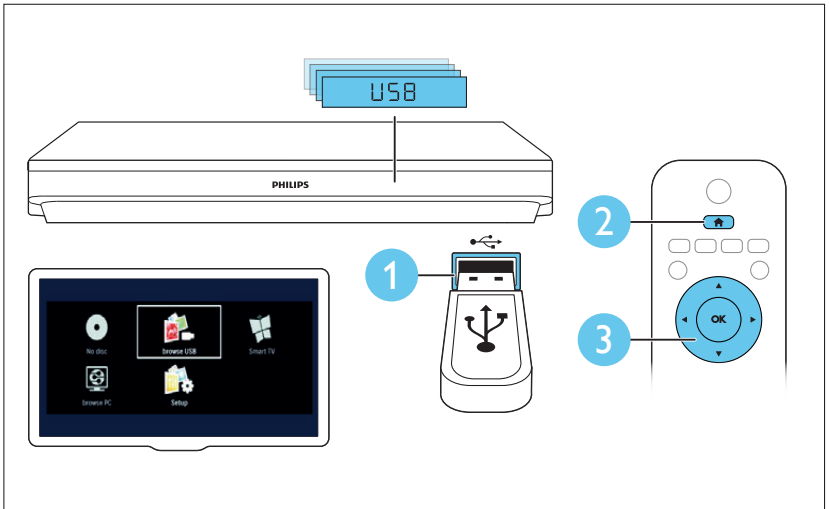
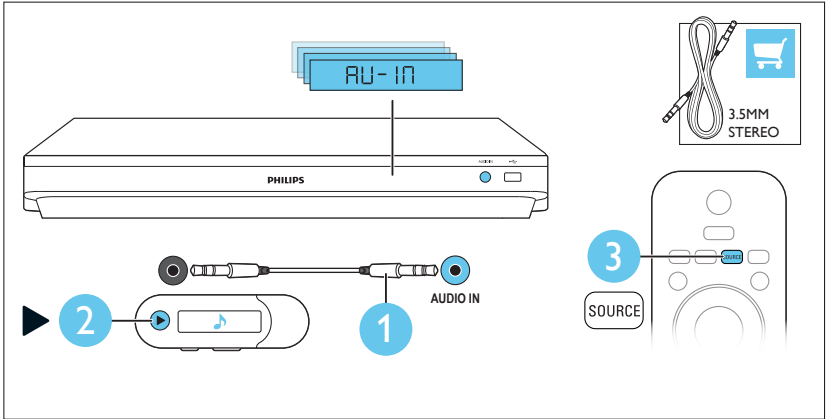
RO Utilizați sistemul home theater

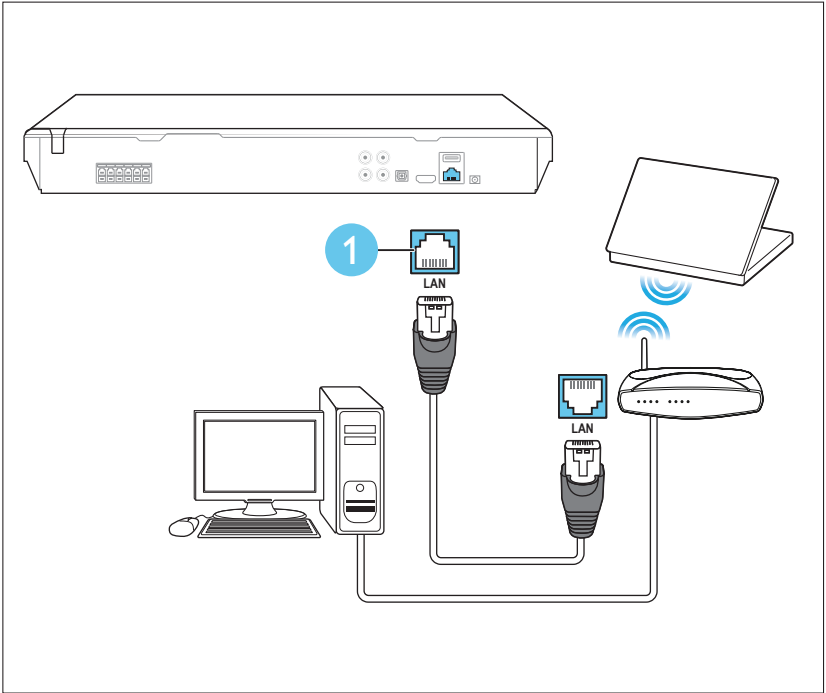
SK Používanie domáceho kina

SV Använda hemmabiosystemet

TR Ev sinema sisteminin kullanılması









Non-contractual images. / Images non contractuelles. /
Außervertragliche Bilder.

All registered and unregistered trademarks are property
of their respective owners.

Specifications are subject to change without notice
Trademarks are the property of Koninklijke Philips Electronics
N.V. or their respective owners
2013 © Koninklijke Philips Electronics N.V. All rights reserved

www.philips.com

HTB3510_12_QSG_V1.0



Be responsible
Respect copyrights

