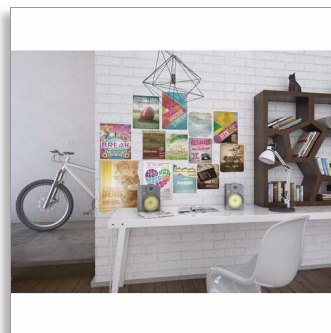




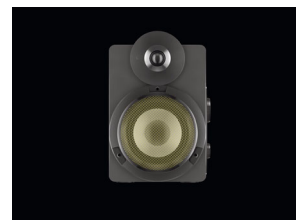
Philips
wireless studio speakers

Bluetooth® aptX

Digital-in, Analog-in
30W max



BTS3000G



Play it all, play it loud

Experience massive, hi-fi sound with these 30W studio speakers and incredible bass reproduction. Stream music wirelessly using Bluetooth® with aptX®. All in a compact design.

Enrich your sound experience

- Bass Reflex Speaker System delivers a powerful, deeper bass
- 30W maximum output power
- Treble and Bass Control for easy high and low tone settings

Enjoy your music from multiple sources

- Optical/coaxial in for connecting your TV, PC or game console
- Wireless music streaming via Bluetooth with Aptx support

Design that blends into your interior

- Compact design fits any space, any lifestyle

PHILIPS

Specifications

Bluetooth compatibility

- iPad: iPad 1, iPad 2, new iPad, iPad mini, iPad with Retina display
- iPhone: iPhone 3, iPhone 3GS, iPhone 4, iPhone 4S, iPhone 5
- iPod touch: 3rd generation or later
- Android tablets & smartphones
- other Bluetooth-enabled device
- work with: Bluetooth 4.0 or below

Optical/coaxial compatibility

- PC
- TV
- Game console

Sound

- Volume control: up/down
- Maximum output power (RMS): 30W
- Sound enhancement: treble and bass control

Loudspeakers

- No. of built-in speakers: 2 x 2

- Speaker drivers: 4" woofer, 15mm tweeter
- Speaker types: bass reflex speaker system

Connectivity

- Bluetooth profiles: A2DP
- Rear Connections: AUX in, Digital coaxial in, Digital optical in

Accessories

- Included accessories: AC-DC Adapter, Quick Use Guide, Remote Control (with battery)
- User Manual: 16 languages

Dimensions

- Speaker dimensions (WxDxH): 160 x 216 x 249 mm
- Packaging dimensions (WxDxH): 397 x 249 x 306 mm
- Product weight: 4.38 kg
- Weight incl. Packaging: 5.33 kg

Power

- Power supply: 110-240V, 50/60 Hz



Highlights

Bass Reflex Speaker System



Bass Reflex Speaker System delivers a deep bass experience from a compact loudspeaker box system. It differs from a conventional loudspeaker box system in the addition of a bass pipe that is acoustically aligned to the woofer to optimize the low frequency roll-off of the system. The result is deeper controlled bass and lower distortion. The system works by resonating the air mass in the bass pipe to vibrate like a conventional woofer. Combined with the response of the woofer, the system extends the overall low frequency sounds to create a whole new dimension of deep bass.

Treble and Bass Control

Treble and bass are equalizer features that control the high and low frequency sound levels of your audio respectively. Treble specifically regulates the amplification of the high tones in the music while bass controls the amplification level of the low tones. Using the up and down keys, the listener can conveniently place more or less emphasis on the low and high tones, or leave treble and bass flat to playback music according to its original recorded setting. Treble and Bass Control lets you listen to your music the way you like it.

Bluetooth with AptX support

Wireless music streaming via Bluetooth with Aptx support

