

Quick Start Guide



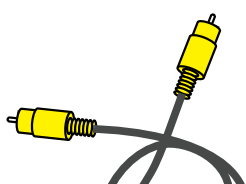
Step A Connect

Step B Setup

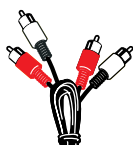
Step C Enjoy

What's in the Box?

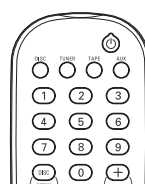
You should find these items upon opening the box.



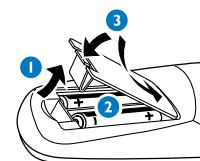
Composite Video Cable



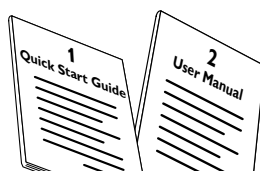
Audio Cable



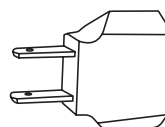
Remote control with two AA batteries



FM and MW antennas



Quick Start Guide
User Manual



Plug adapter (not for all versions)

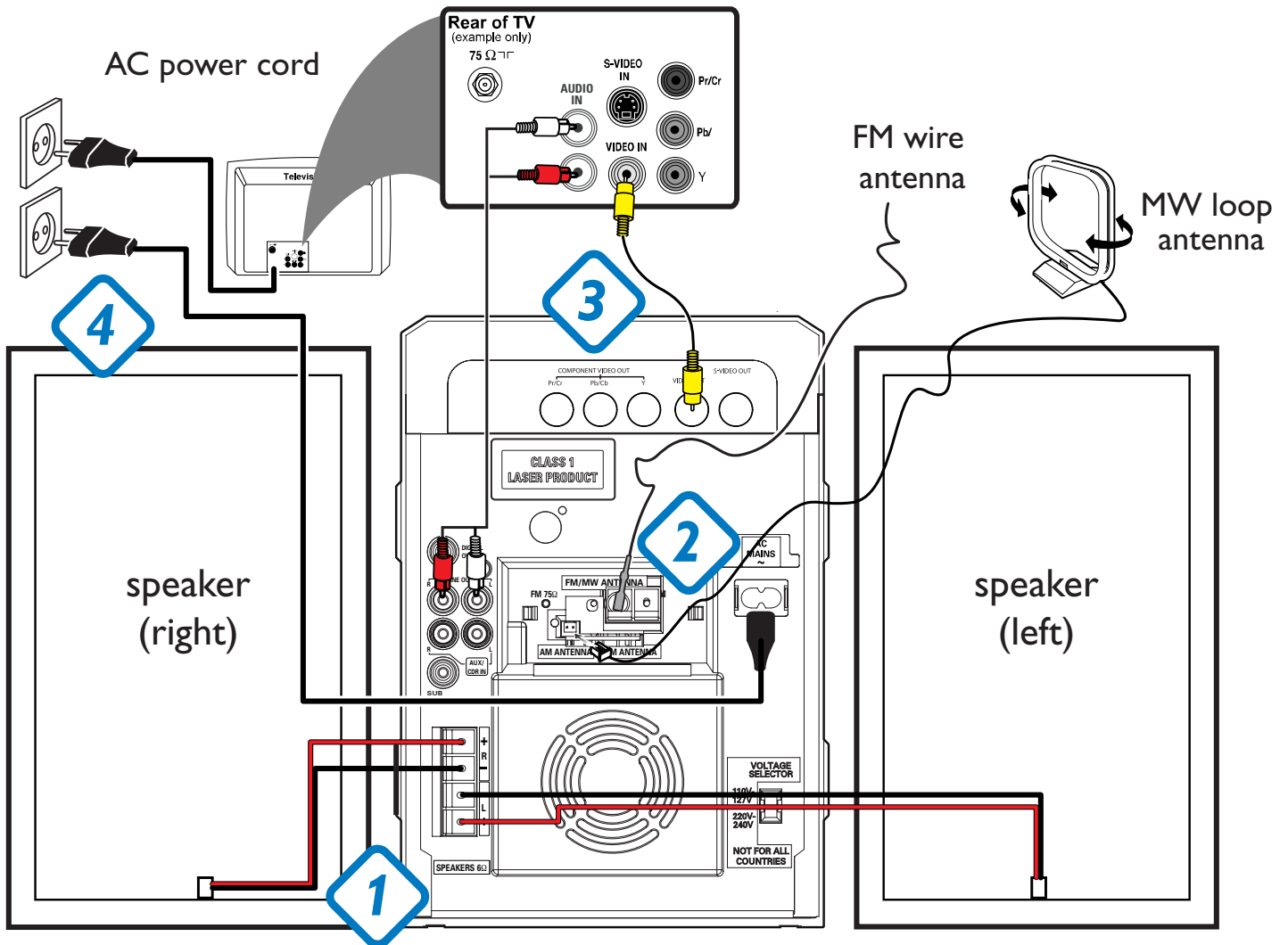
PHILIPS

Step A *Connect*

Tip

See the User Manual for other TV connection options.

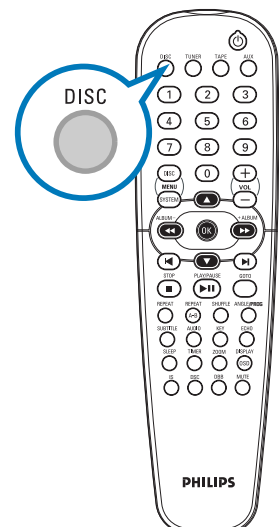
- 1 Connect the speaker cables.
- 2 Connect the MW and FM antennas.
- 3 Connect the composite video cable and audio cables to a TV.
- 4 Connect the power cords of the system and TV.



Step B *Setup*

Setting up the TV

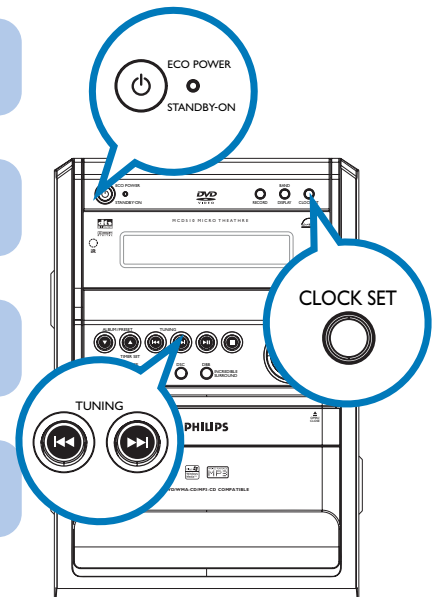
- 1 Press **SOURCE** (DISC on the remote) to select disc source.
- 2 Turn on the TV and set it to the correct Video In channel.



Step B *Setup*

Setting the clock

- 1 In normal standby mode, press and hold **CLOCK SET** on the system.
- 2 When the hour digits flash, press **TUNING** ◀▶ on the system to set the hours.
- 3 Press **CLOCK SET** again and the minute digits flash. Then press **TUNING** ◀▶ to set the minutes.
- 4 Press **CLOCK SET** again to confirm the time setting.



Tip

If the system is in Eco power standby mode, press and hold **ECO POWER/STANDBY-ON** ⏻ for more than 3 seconds to switch to normal standby.

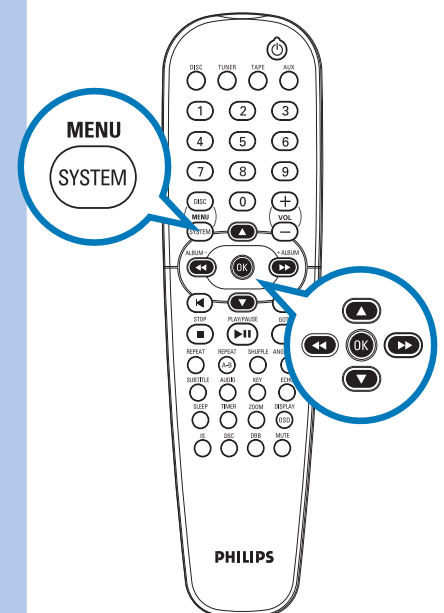
Setting DVD menu options

Language	Video	Audio	Rating
OSD Menu	English		
Subtitle	English		
Audio	English		
Menu	English		

Language	Video	Audio	Rating
TV Shape	4:3 LB		4:3 PS
TV System	Auto		4:3 LB
Video output	S-VIDEO		16:9

Language	Video	Audio	Rating
Digital Out	PCM		
PCM 48KHz	Off		Off
Priority	CD		On
Night Mode	Off		

Language	Video	Audio	Rating
Password	⛔	---	1.kid Safe
Rating	8. Adult		2.G
Load Factory	Reset		3.PG
			4.PG-13
			5.PG-R
			6.R
			7.NC-17
			8.Adult



Tip

See chapters "Preparations" and "DVD Menu Options" in the User Manual for detailed descriptions.

