

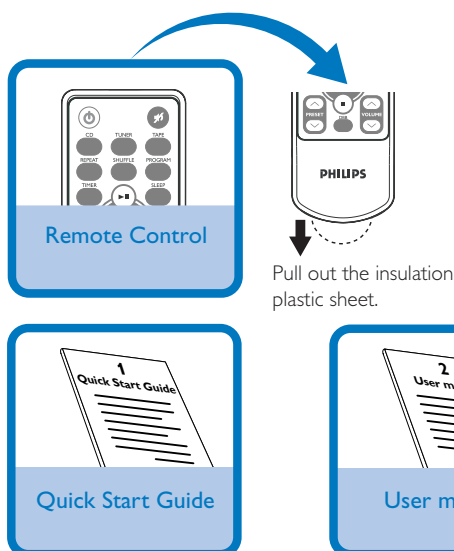
# Quick Start Guide



Step A	Setup
Step B	Enjoy

## What's in the Box?

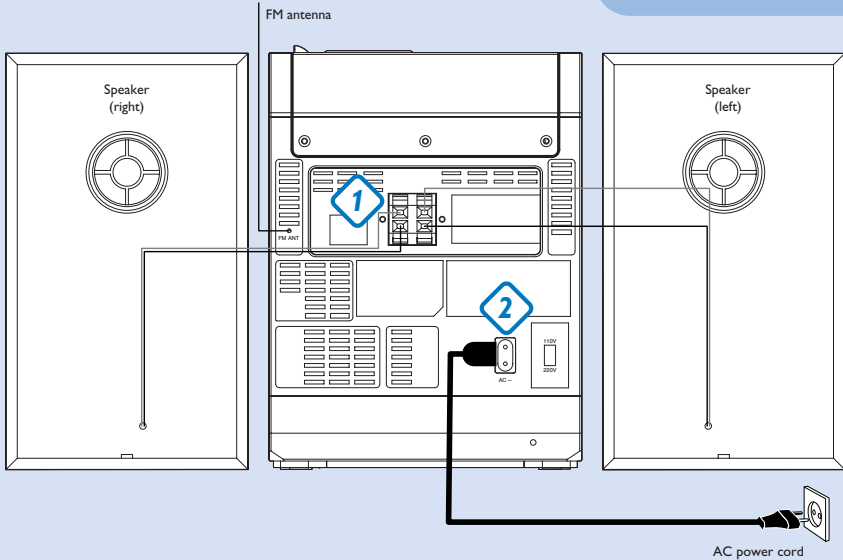
You should find these items upon opening the box.



## Connection

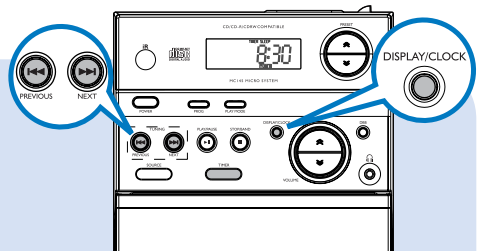
- 1 Connect the speaker wires to the **SPEAKERS** terminals.
- 2 After ensuring all the above connections have been made, connect the power cord of the system to the AC power outlet.

**Tip**  
It is unnecessary to connect the FM pigtail antenna since it is fixed to the main unit.



## Setting the clock

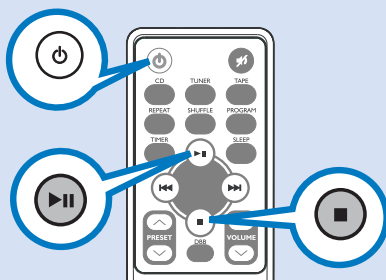
- 1 In standby mode, press **DISPLAY/CLOCK** button.. The clock digits for the hours flash.
- 2 Press **◀◀ / ▶▶** to set the hours.
- 3 Press **DISPLAY/CLOCK** again. The clock digits for the minutes flash.
- 4 Press **◀◀ / ▶▶** to set the minutes.
- 5 Press **DISPLAY/CLOCK** to confirm the time.



## Step B *Enjoy*

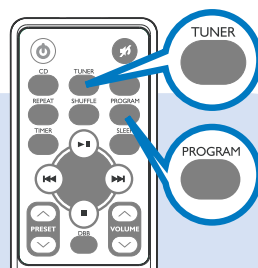
### Playing a disc

- 1 Select CD source.
- 2 Press **OPEN-CLOSE** on the top of the system to open the CD door.
- 3 Insert a disc with printed side facing up and press down on **OPEN-CLOSE** to close the CD door.
- 4 Press **▶||** to start playback.
- 5 Press **■** to stop playback.



### Auto programming radio stations

- 1 Press **SOURCE** (**TUNER** on the remote control) to select tuner source.
- 2 Press **STOP/BAND** (on the set) or **TUNER** (on the remote control) once or more to select your waveband.
- 3 Press **PRESET**  $\approx / \approx$  ( $\Delta / \nabla$  on remote control) to select the preset number where programming should start.
- 4 Press **PROG** for more than 2 seconds to activate programming.



#### Tip

**Detailed playback features and additional functions are described in the accompany user's manual.**