

PHILIPS

DVD플레이어

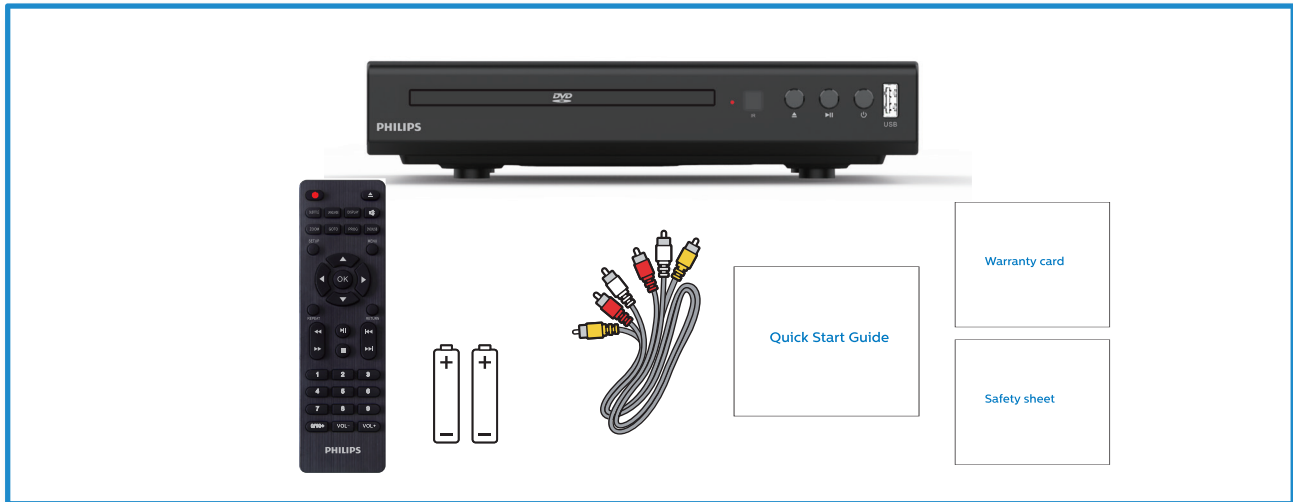
2000 시리즈

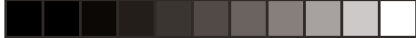
EP200

요약 사용 설명서

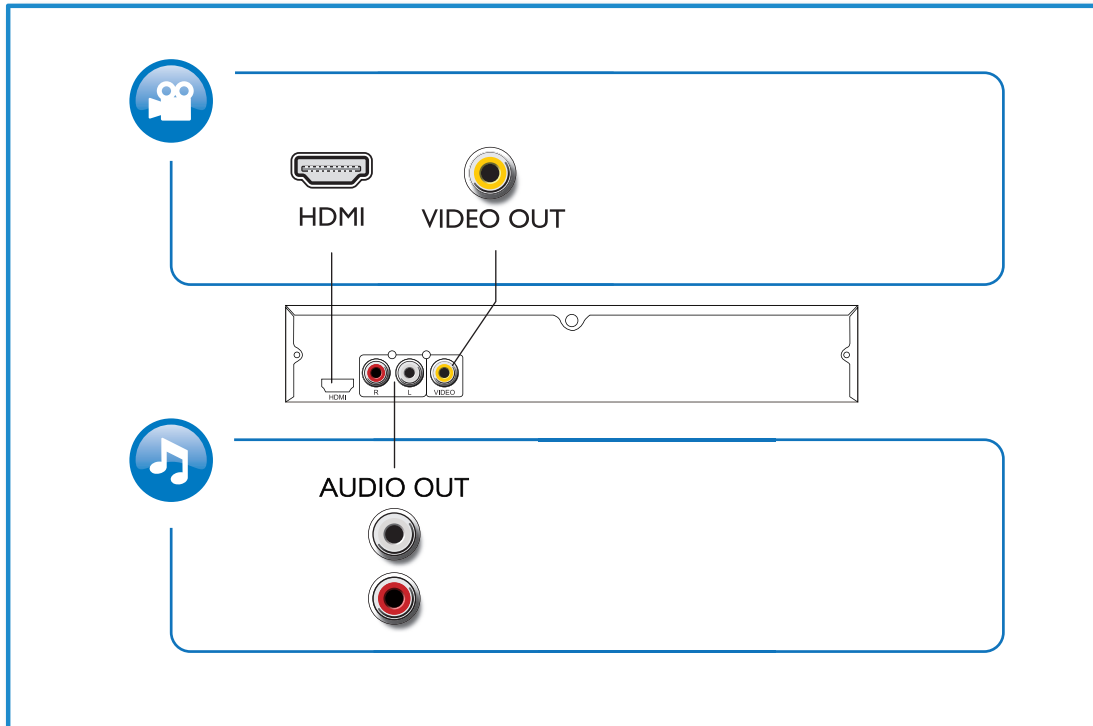


Register your product and get support at:
www.philips.com/support

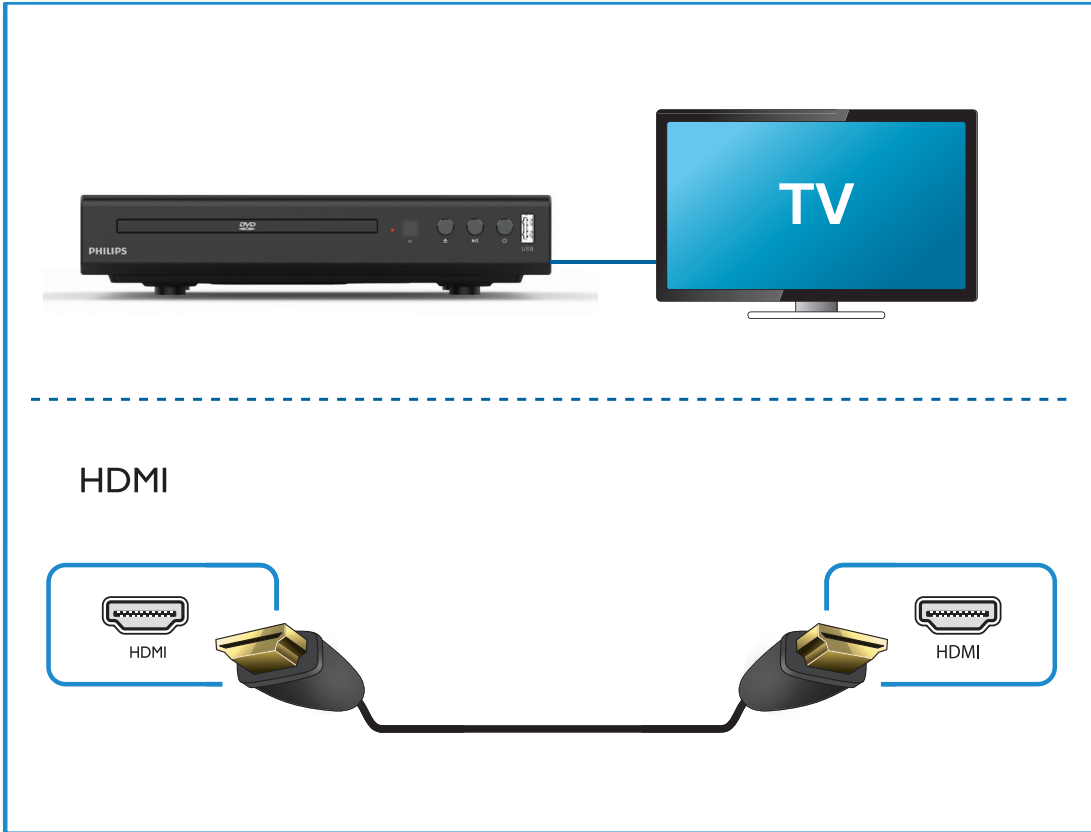


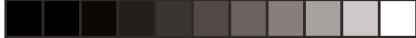


1



2





VIDEO OUT + AUDIO OUT

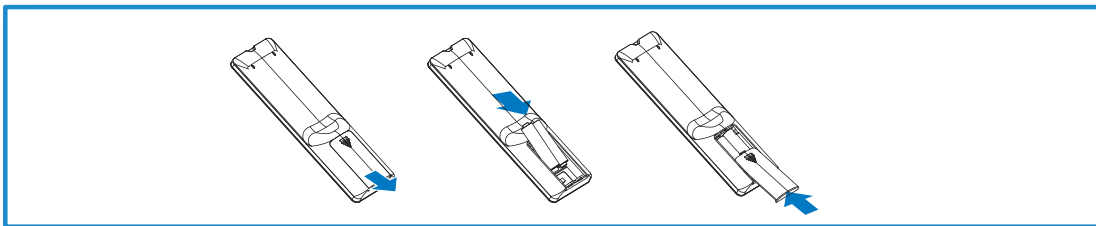


3





4

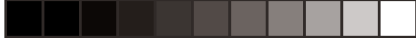


5



6





제품 사양

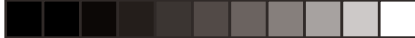
DVD플레이어

매개 변수	데이터
전압	100-240V AC/50/60Hz
정격 전력	15W
대기 전력	< 0.5W
오디오 디지털 아날로그	16bit/48KHz
비디오 출력	2.0Vpp(75 Ohm)
오디오 출력 최대	1.8 Vpp max .(10 KOhm)
신호 대 잡음비	>90dB
TV 시스템	PAL/NTSC
매개 변수	데이터
오디오 설정	아날로그 다운 믹스 스테레오
주파수	MP3:22.05 KHz, 24 KHz, 32 KHz, 44.1 KHz, 48 KHz WMA: 44.1 KHz, 48 KHz
출력 포트	R/L output Video output HDMI output

Product Specifications

DVD Player

Specifications	Description
Voltage	100-240 V AC/50/60 Hz
Rated power	15 W
Standby power	< 0.5 W
Digital and analog audio signal	16 bits/48 KHz
Video output	2.0 Vpp (75 Ohm)
Audio output	1.8 Vpp max. (10 KOhm)
Signal-to-noise ratio	> 90 dB
TV system	PAL/NTSC
Specifications	Description
Audio settings	Analog downmix stereo
Frequency	MP3: 22.05 KHz, 24 KHz, 32 KHz, 44.1 KHz, 48 KHz WMA: 44.1 KHz, 48 KHz
Output port	R/L output Video output HDMI output



Philips and the Philips Shield Emblem are registered trademarks of Koninklijke Philips N.V. and are used under license. This product has been manufactured by and is sold under the responsibility of MMD Hong Kong Holding Limited or one of its affiliates, and MMD Hong Kong Holding Limited is the warrantor in relation to this product.

