

Register your product and get support at
www.philips.com/welcome

Immersive
5000 series



Quick start guide

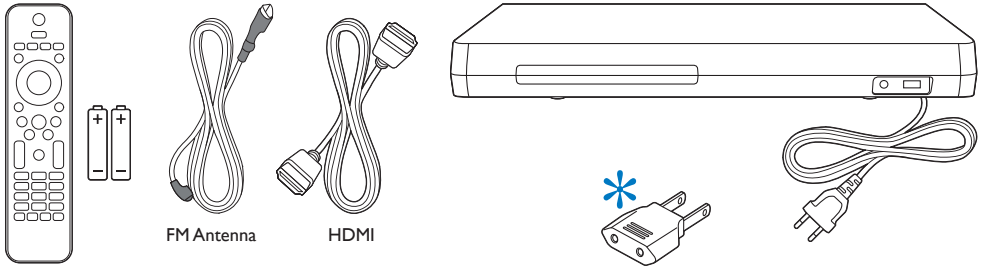
PHILIPS



EN Before using your product, read all accompanying safety information

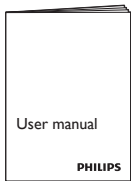
ES Antes de usar el producto, consulte la información de seguridad que se encuentra adjunta

PT Antes de usar o produto, leia todas as informações de segurança em anexo



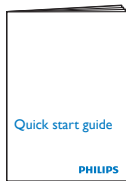
FM Antenna

HDMI



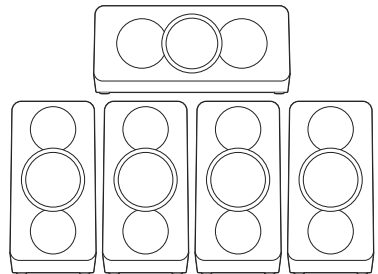
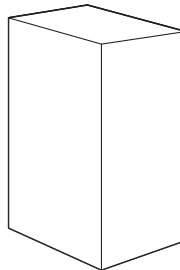
User manual

PHILIPS



Quick start guide

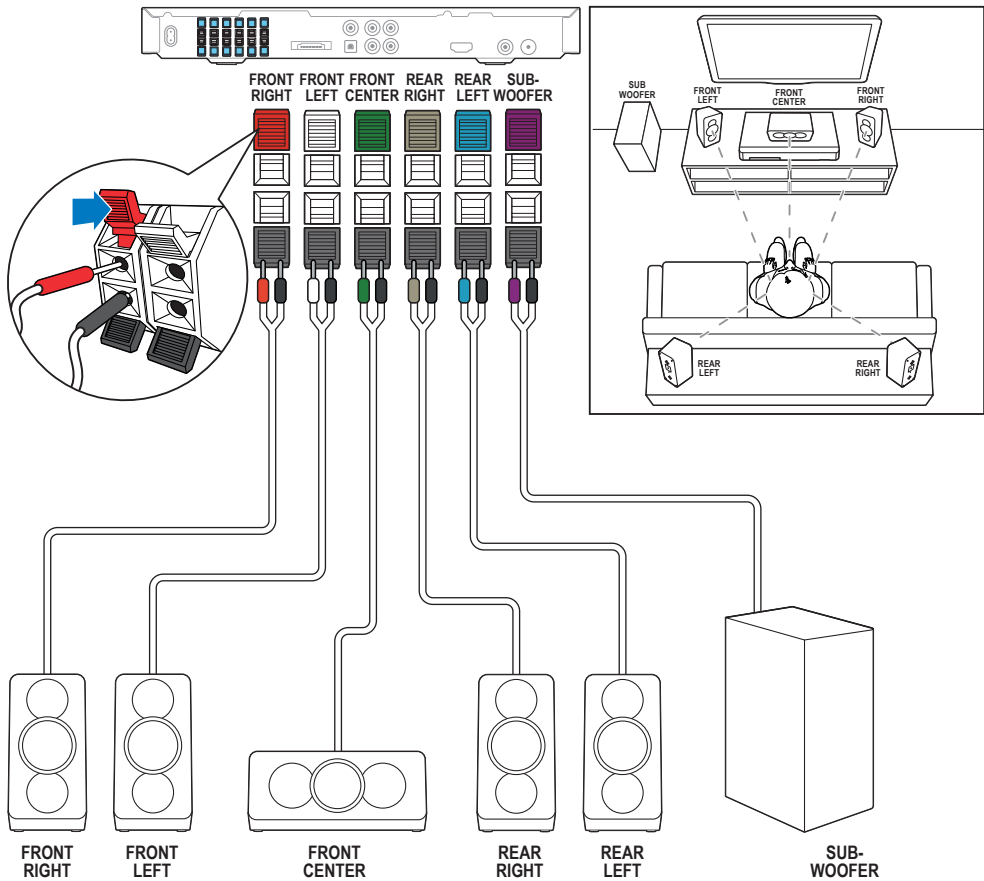
PHILIPS



* Adaptador fornecido como acessório não deverá ser usado nas redes elétricas do Brasil, seu uso é destinado exclusivamente a outros países da América Latina.

1

- EN** Connect the home theater
- ES** Conecte el sistema de cine en casa
- PT** Conectar o Home Theater

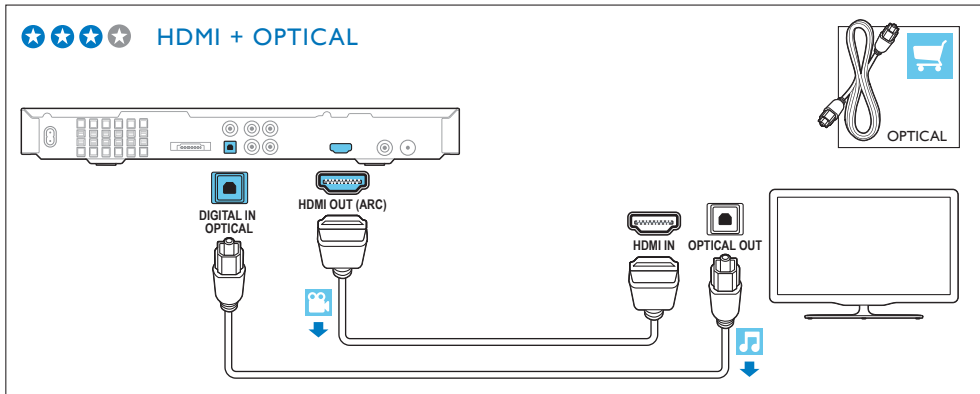
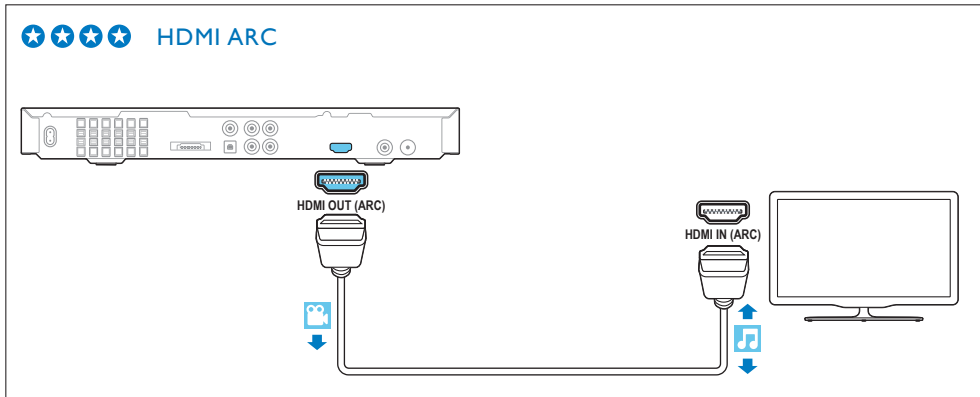


2

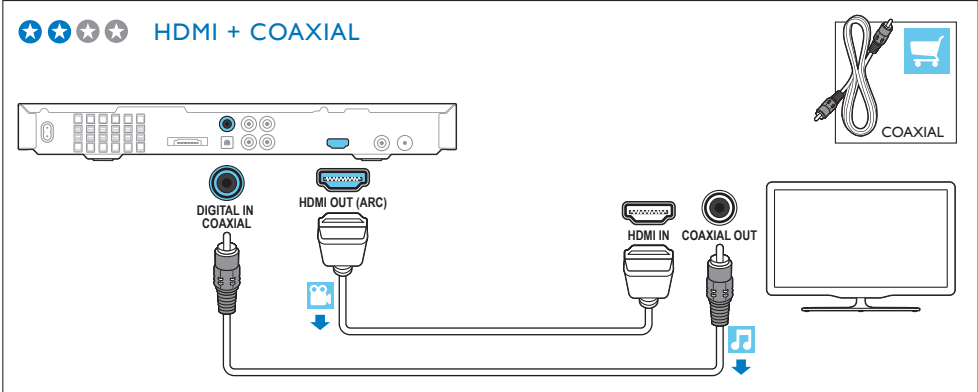
EN Connect to TV in one of these ways

ES Conecte al TV de alguna de las siguientes maneras

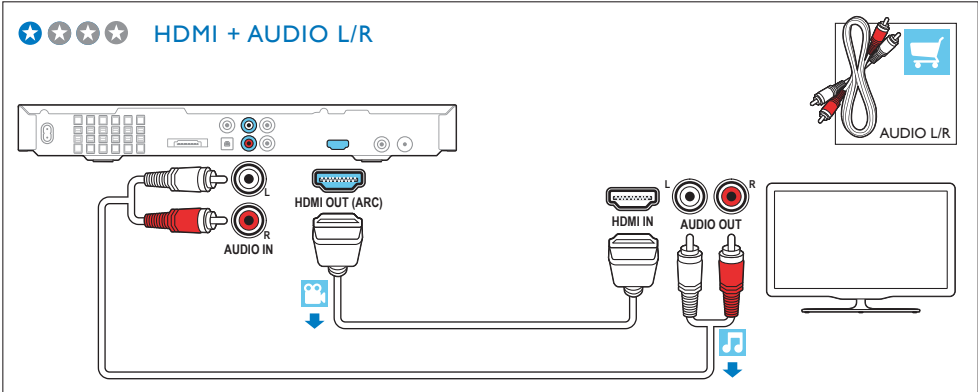
PT Conecte à TV de uma destas maneiras



★ ★ ★ ★ HDMI + COAXIAL



★ ★ ★ ★ HDMI + AUDIO L/R



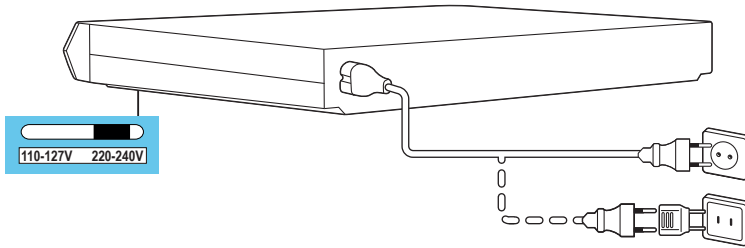
3

EN Switch on the home theater

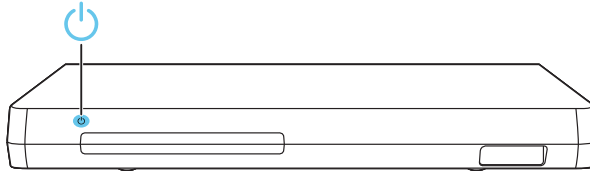
ES Encienda el sistema de cine en casa

PT Ligar o Home Theater

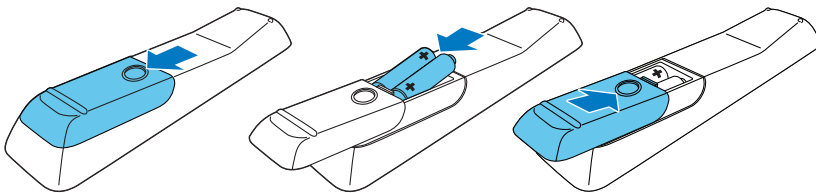
1



2



3

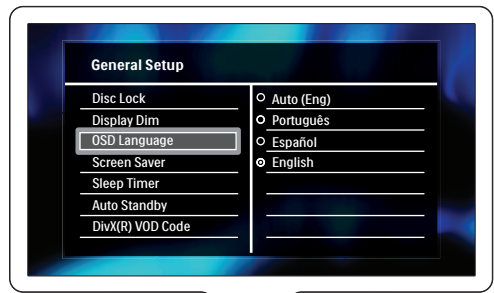
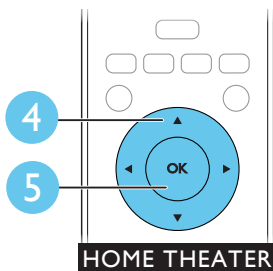
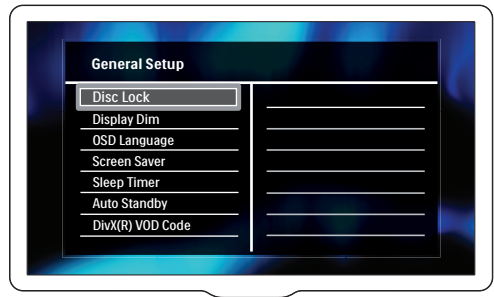
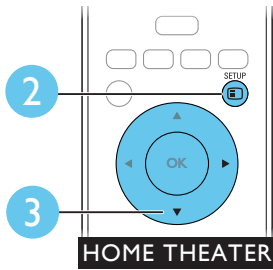
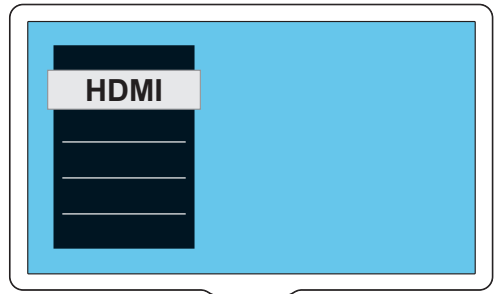
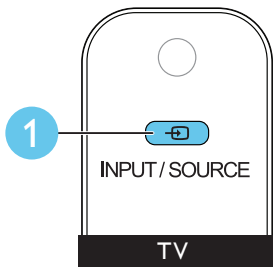


4

EN Complete the first time setup

ES Complete la configuración inicial

PT Fazer a configuração inicial

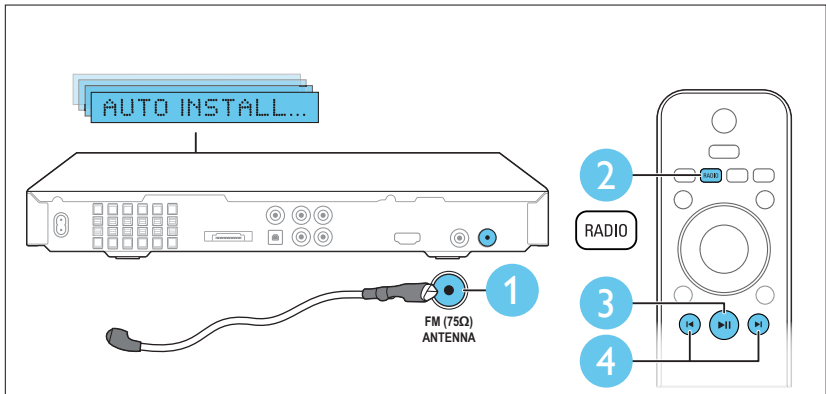
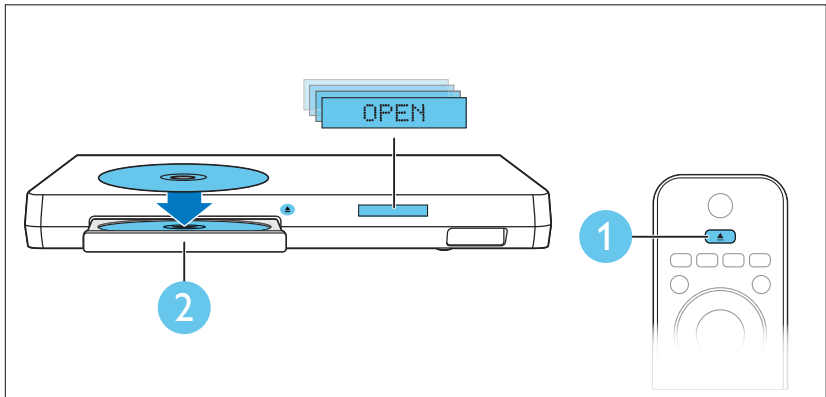


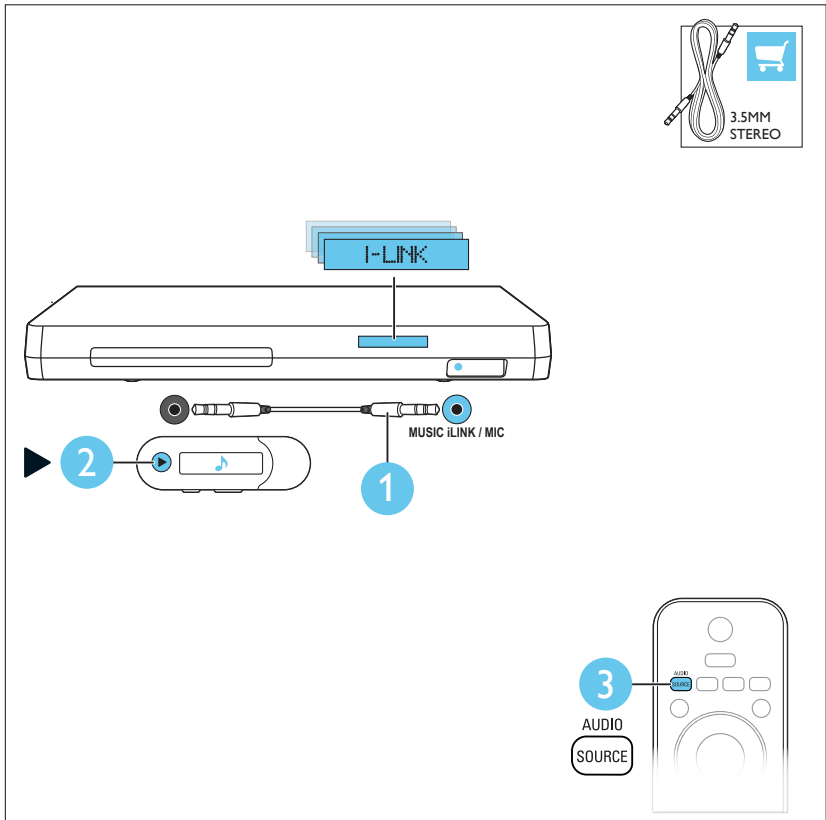
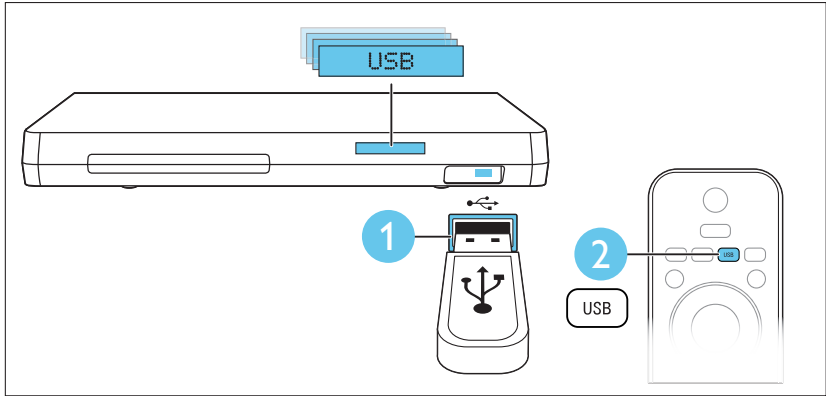
5

EN Use your home theater

ES Use el sistema de cine en casa

PT Usar o Home Theater







EN For more information about using this product visit www.philips.com/support

ES Para obtener más información sobre el uso de este producto, visite www.philips.com/support

PT Para obter mais informações sobre o uso deste produto, visite o site www.philips.com/support



www.philips.com/support



Non-contractual images. / Images non contractuelles. / Außervertragliche Bilder.

All registered and unregistered trademarks are property of their respective owners.

Specifications are subject to change without notice
Trademarks are the property of Koninklijke Philips Electronics N.V. or their respective owners
2012 © Koninklijke Philips Electronics N.V. All rights reserved
www.philips.com
sgsn_1151/55_v1

Evite o uso prolongado do aparelho com volume superior a 85 decibéis, pois isto poderá prejudicar a sua audição.
Potência total de saída de 1000W RMS (+/- 0.5dB, 30% THD)



Be responsible
Respect copyrights

