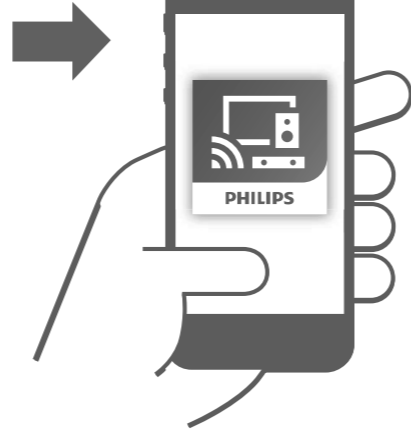
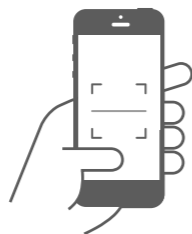


快速操作指南



扫描下载/安装



Download on the App Store

Philips Sound



在以下网站上注册产品并获得支持
www.philips.com/support

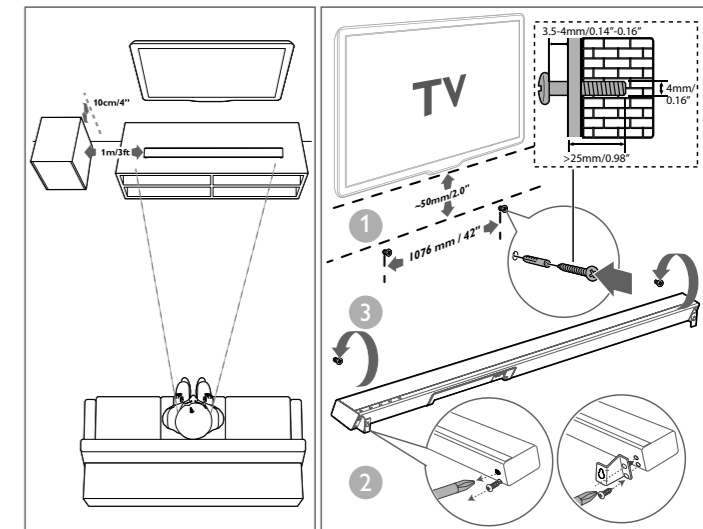


包装盒内物品



1

安放音箱 壁挂音箱 (可选)

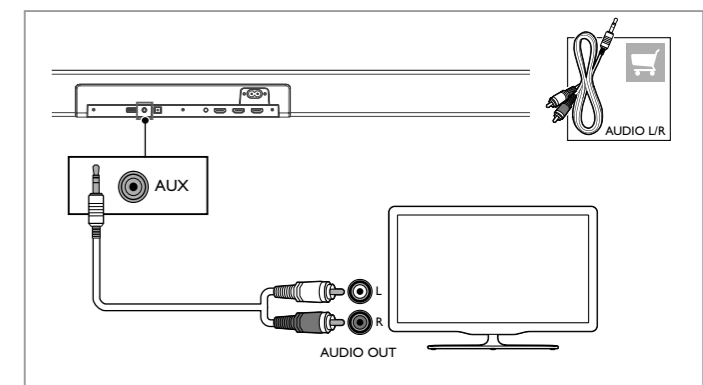
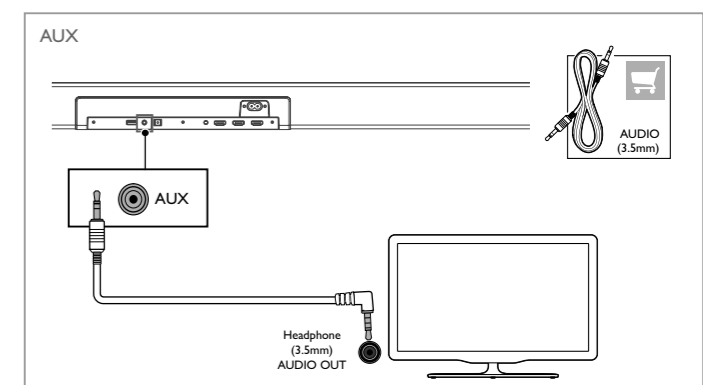
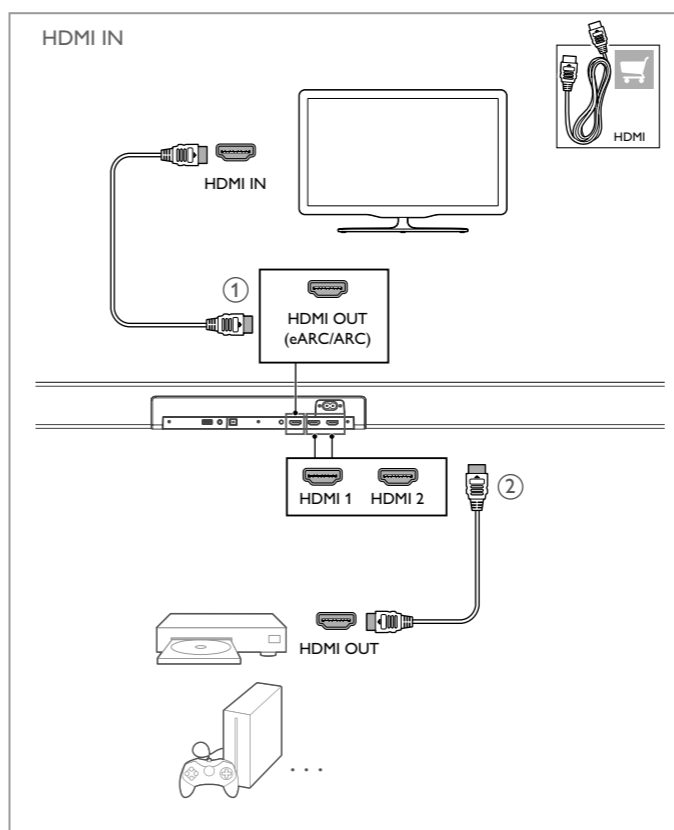
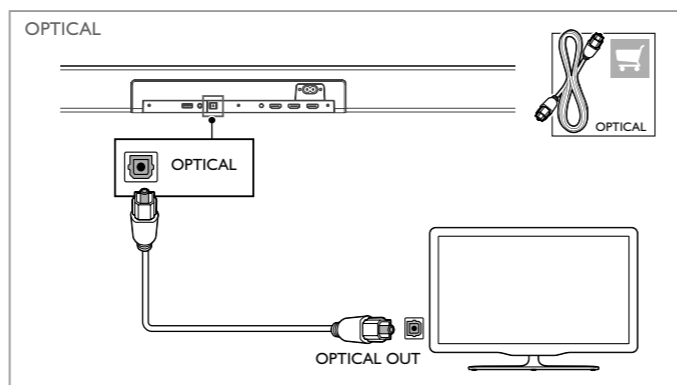
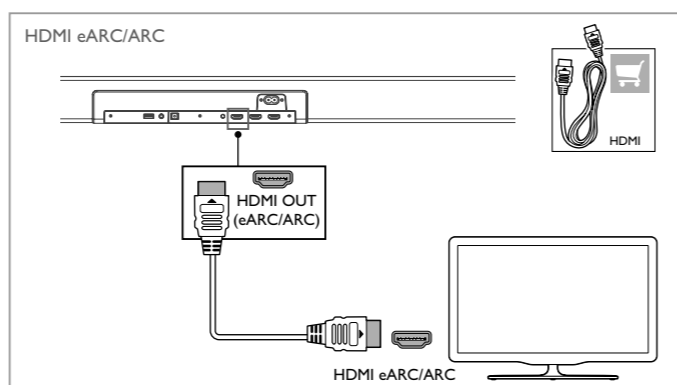


建议壁挂高度

建议在壁挂音箱之前先安装电视。预装电视后，将音箱安装在距电视底部 50mm / 2.0" 的位置。
如果想壁挂音箱，则先在墙上钻 2 个平行孔（根据墙的类型选 Ø3-8 mm）。孔之间的距离应为 1076mm / 42"。

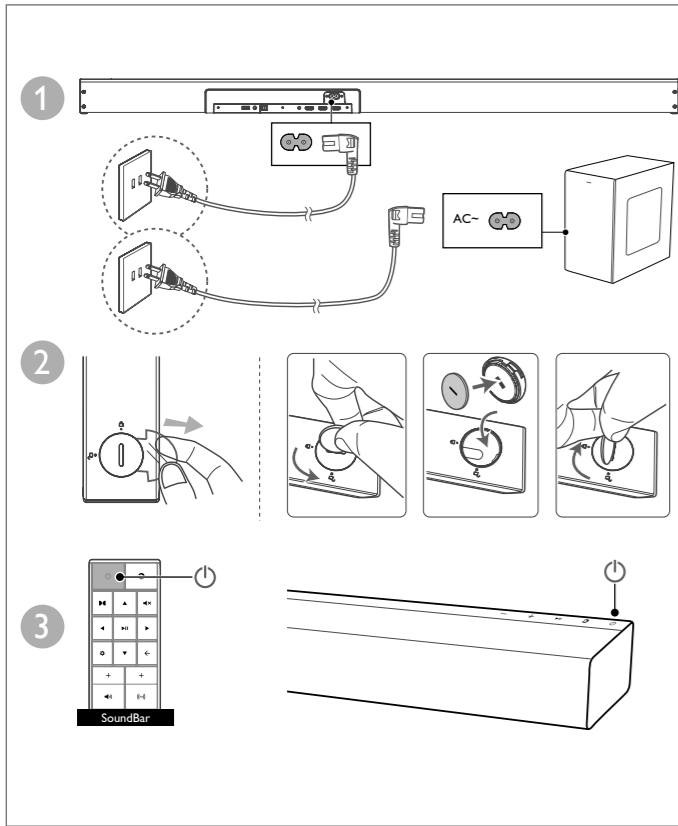
2

以如下某种方式通过电视收听音频

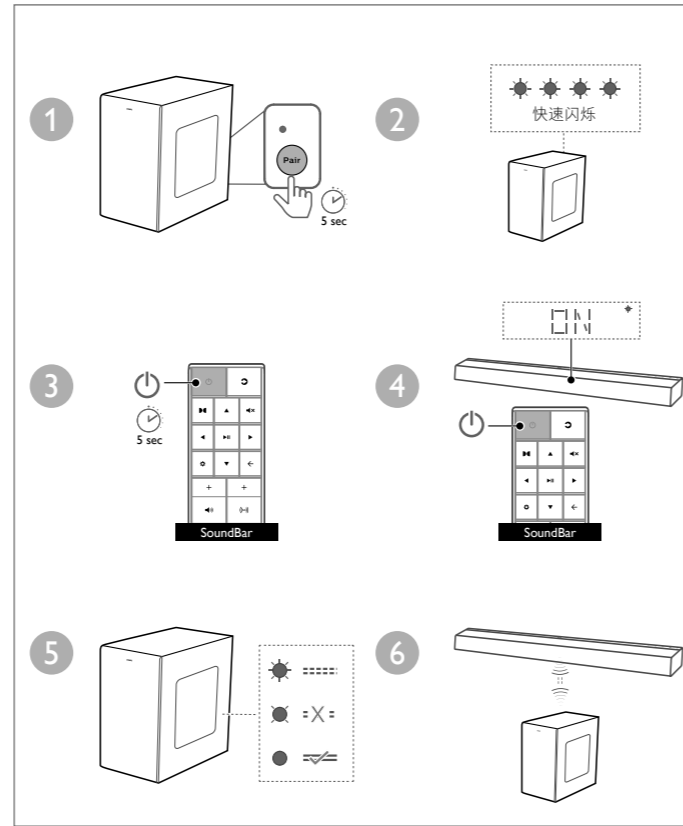


Philips and Philips Shield Emblem are registered trademarks of Koninklijke Philips N.V. and are used under license. This product has been manufactured by and is sold under the responsibility of MMD Hong Kong Holding Limited, or one of its affiliates and MMD Hong Kong Holding Limited, is the warrantor in relation to this product.

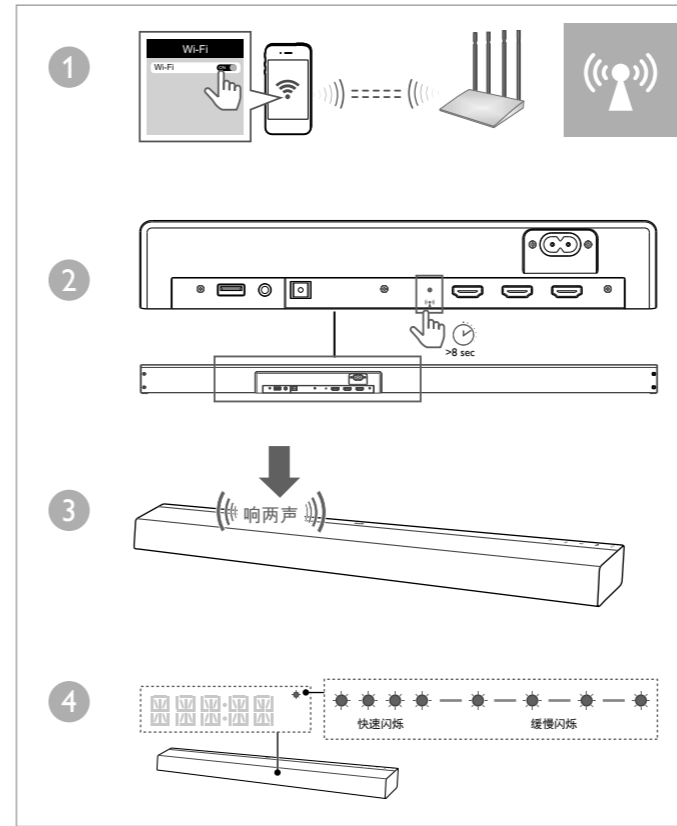
3 开启音箱



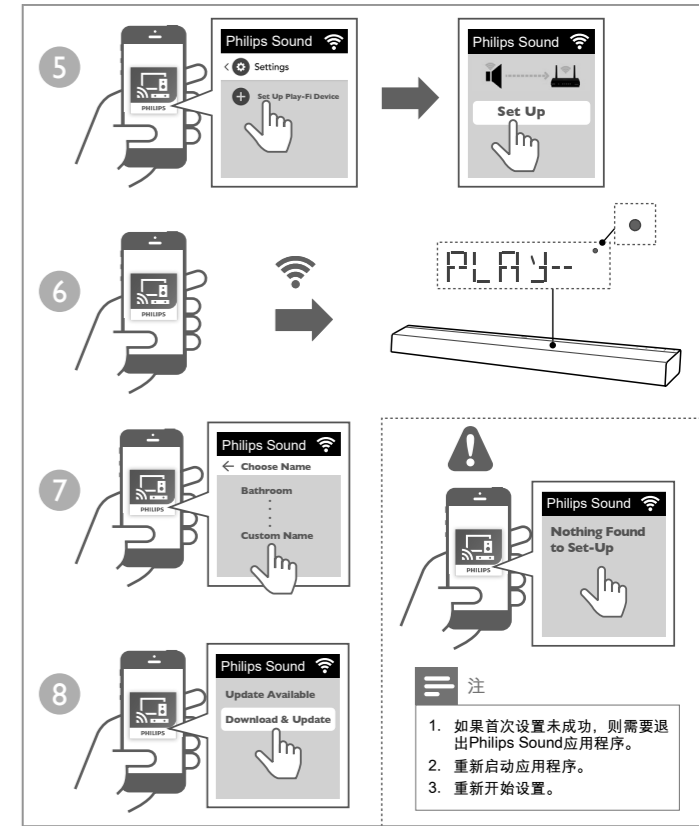
手动设置低音炮 (如果无法自动连接 / 无声音)



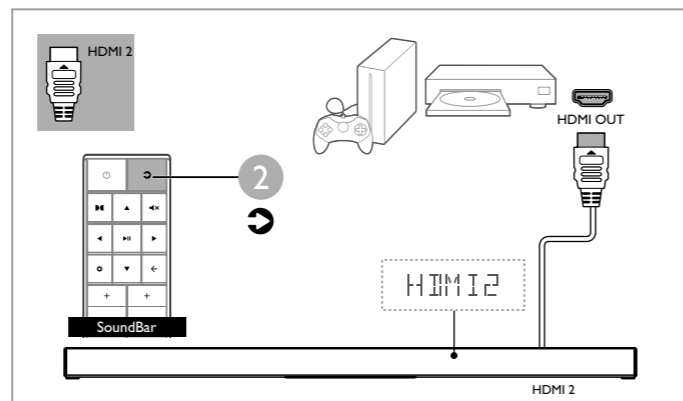
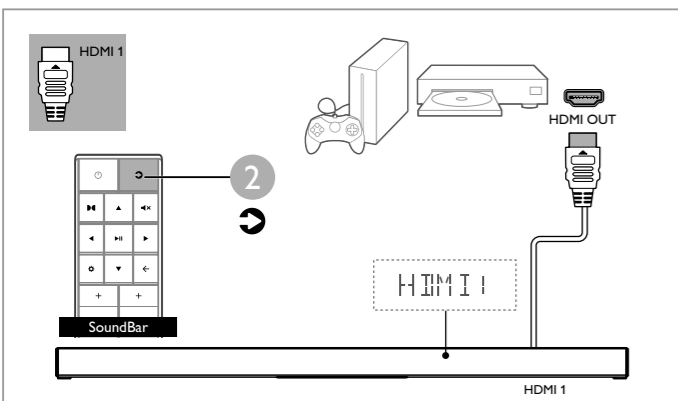
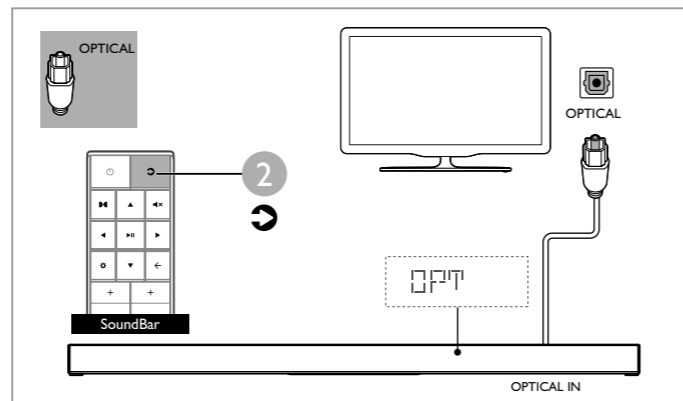
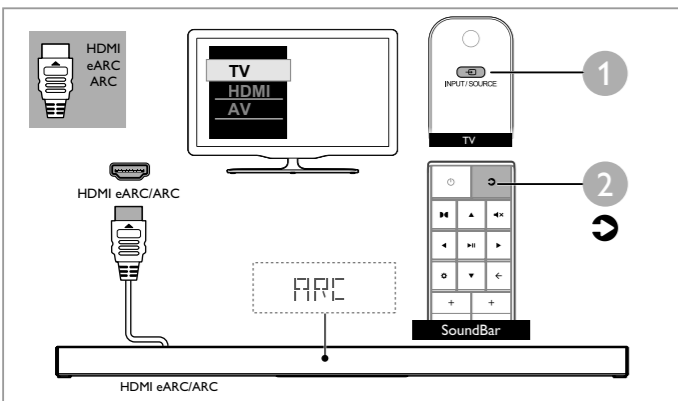
4 Wi-Fi 设置



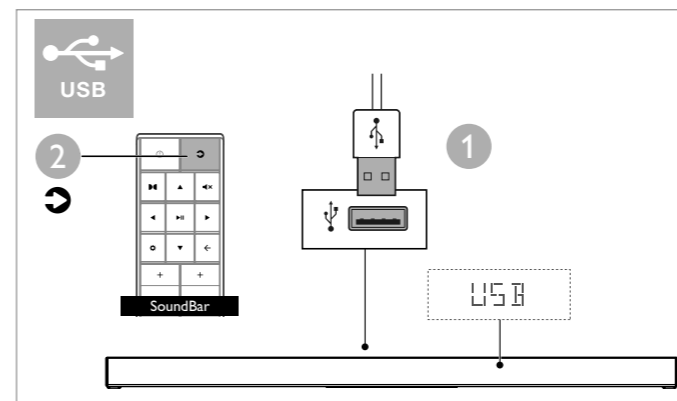
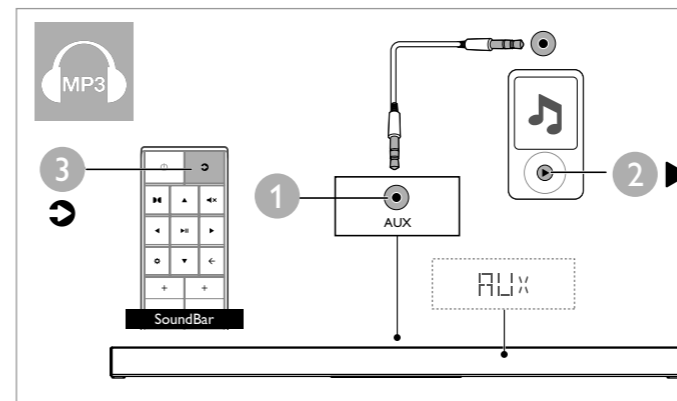
根据设备版本的不同，操作屏幕以及执行操作的方式可能有所不同。



5 选择正确的音频源



6 播放其他设备



7 通过蓝牙播放音频

