

Register your product and get support at
www.philips.com/welcome

HTS5561



EN User manual

PHILIPS

Contents

1 Using help	4
Navigate the onscreen help	4
2 Help and support	5
Update your onscreen help	5
Tutorials	6
FAQs	6
Contact Philips	6
3 Notice	6
Open source software	6
Trademarks	6
4 Important	8
Safety	8
Care for your product	8
Care of the environment	9
3D health warning	9
5 Your home theater	10
Main unit	10
Remote control	10
6 Connect your home theater	13
Speakers	13
Connectors	14
Connect to TV	16
Connect audio from TV and other devices	17
Computers and the Internet	18
7 Use your home theater	20
Choose sound	20
Discs	21
USB storage devices	24
DivX	24
Audio, video, and picture options	25
Radio	27
MP3 player	28
iPod or iPhone	28
Use smartphone	28
Browse PC through DLNA	30
Browse OnlineTV	32
Rent online video	33
EasyLink	34
8 Change settings	35
Picture	35
Sound	36
Language	37
Parental control	37
Energy saving	38
Apply factory settings	38
9 Update software	39
Check software version	39
Update software through the Internet	39
Update software through USB	39
10 Product specifications	40
11 Troubleshooting	44
12 Language code	47
13 Index	48

1 Using help

Philips is committed to develop products that contribute to a greener environment. To save paper and the environment, access the help on your home theater through the onscreen interface.

The onscreen help contains all the information that you need to set up your home theater.

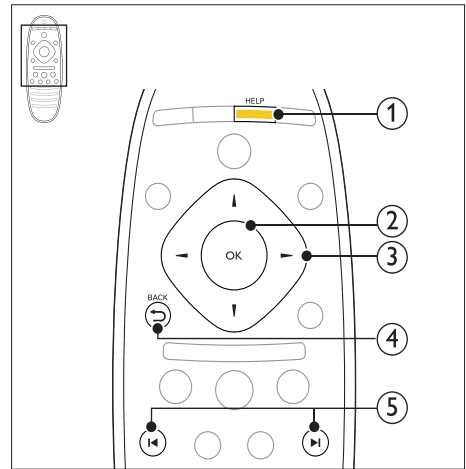
However, if you prefer to print the user manual, download the PDF version from www.philips.com/support. Follow the instructions on the website to select your language, and then enter your model number.

Access the onscreen help by pressing **HELP** (yellow button) on your remote control.

The onscreen help has two panels.

- The left panel contains the **Contents** and **Index**. Navigate the **Contents** or **Index** to select a page.
- The right panel contains the content of each page. Select **Related topics** for additional help on the content.

Navigate the onscreen help



- ① **HELP**
Access the onscreen help.
- ② **OK**
Display the selected page, or expand topics in **Contents**.
- ③ **Navigation buttons**
 - Up: Scroll up or move to the previous page.
 - Down: Scroll down or move to the next page.
 - Right: Navigate to the right panel or next index entry.
 - Left: Navigate to the left panel or previous index entry.
- ④ **↶ BACK**
Move up in the **Contents** or **Index**.
From the right panel, move to the **Contents** on the left panel.
- ⑤ **◀ / ▶ (Previous/Next)**
 - **◀**: Display the last viewed page in history.
 - **▶**: Display the next page from history.

2 Help and support

Watch video tutorials, download a software update, and find answers to many frequently answered questions (FAQs) on your product at www.philips.com.

Update your onscreen help

Philips continually tries to improve its products. To make sure that your onscreen help is up to date with the latest information, update your home theater with the latest onscreen help. Download the latest help from www.philips.com/support.

What you need

- A USB flash drive, with at least 35MB of memory. The USB flash drive must be FAT or NTFS formatted. Do not use a USB hard drive.
- A computer with Internet access.
- An archive utility that supports the ZIP file format (for example, WinZip® for Microsoft® Windows® or Stuffit® for Macintosh®).

Step 1: Check the current version of help

Check the current version of onscreen help installed in your home theater. If the version is lower than the version available at www.philips.com/support, download and install the latest onscreen help.

The last two digits indicate the version of the onscreen help installed in your home theater. For example, if the version in the home theater is 'Subsystem SW: 35-00-00-05', '05' represents the version of the onscreen help currently installed.

- 1 Press **⬆** (Home).
- 2 Select **[Setup]**, and then press **OK**.
- 3 Select **[Advanced]** > **[Version Info.]**, and then press **OK**.

Step 2: Download the latest onscreen help

- 1 Connect a USB flash drive to your computer.
- 2 In your web browser, go to www.philips.com/support.
- 3 At the Philips support website, find your product and click on **User manuals**, and then locate the **User Manual Upgrade Software**.
↳ The help update is available as a zip file.
- 4 Save the zip file in the root directory of your USB flash drive.
- 5 Use the archive utility to extract the help update file in the root directory of the USB flash drive.
↳ A file named 'HTSxxxxeDFU.zip' is extracted under the **UPG_ALL** folder of your USB flash drive, 'xxxx' being the model number of your home theater.
- 6 Disconnect the USB flash drive from your computer.

Step 3: Update onscreen help



Caution

- Before you connect the USB flash drive to your home theater, make sure that there is no disc in the disc compartment, and the disc compartment is closed.

- 1 Switch on the TV.
- 2 Connect the USB flash drive containing the downloaded file to your home theater.
- 3 Press **⬆** (Home).
- 4 Enter **338** on the remote control.
↳ Follow the instructions on the TV to confirm the update. Do not switch off the home theater or remove the USB flash drive during the update.
- 5 Disconnect the USB flash drive from the home theater.



Warning

- If power fails during the update, do not remove the USB flash drive from the home theater.
- If an error occurs during the update, retry the procedure. If the error reoccurs, contact Philips Consumer Care.

Tutorials

To set up your home theater and get additional information, refer to the video tutorials at www.philips.com/support.

FAQs

If you have a problem, refer to the frequently asked questions (FAQs) for this home theater at www.philips.com/support.

If you still need help, contact Philips Consumer Care in your country.



Warning

- Do not attempt to repair your home theater yourself. This may cause severe injury, irreparable damage to your home theater, or void your warranty.

Contact Philips

If you contact Philips, you will be asked for the model and serial number of your product. The model number and serial number are on the back or bottom of your product. Note the numbers before you call Philips:

Model No. _____

Serial No. _____

3 Notice

This section contains the legal and trademark notices.

Open source software

Philips Electronics Singapore Pte Ltd hereby offers to deliver, upon request, a copy of the complete corresponding source code for the copyrighted open source software packages used in this product for which such offer is requested by the respective licenses. This offer is valid up to three years after product purchase to anyone in receipt of this information. To obtain source code, please contact open.source@philips.com. If you prefer not to use email or if you do not receive confirmation receipt within a week after mailing to this email address, please write to "Open Source Team, Philips Intellectual Property & Standards, P.O. Box 220, 5600 AE Eindhoven, The Netherlands". If you do not receive timely confirmation of your letter, please email to the email address above. The texts of the licenses and acknowledgements for open source software used in this product are included in the user manual.

Trademarks



"Blu-ray 3D" and "Blu-ray 3D" logo are trademarks of Blu-ray Disc Association.



BONUSVIEW™

'BD LIVE' and 'BONUSVIEW' are trademarks of Blu-ray Disc Association.



'DVD Video' is a trademark of DVD Format/ Logo Licensing Corporation.



Java and all other Java trademarks and logos are trademarks or registered trademarks of Sun Microsystems, Inc. in the United States and/or other countries.

x.v.Colour

'x.v.Colour' is a trademark of Sony Corporation.



Manufactured under license under U.S. Patent #'s: 5,451,942; 5,956,674; 5,974,380; 5,978,762; 6,226,616; 6,487,535; 7,392,195; 7,272,567; 7,333,929; 7,212,872 & other U.S. and worldwide patents issued & pending. DTS and the Symbol are registered trademarks, & DTS-HD, and DTS-HD Master Audio | Essential and the DTS logos are trademarks of DTS, Inc. Product includes software. © DTS, Inc. All Rights Reserved.



Manufactured under license from Dolby Laboratories. Dolby, Pro Logic, and the double-D symbol are trademarks of Dolby Laboratories.



DivX®, DivX Certified®, DivX Plus™ HD and associated logos are trademarks of DivX, Inc. and are used under license.

ABOUT DIVX VIDEO: DivX® is a digital video format created by DivX, Inc. This is an official DivX Certified® device that plays DivX video. Visit divx.com for more information and software tools to convert your files into DivX video.

ABOUT DIVX VIDEO-ON-DEMAND: This DivX Certified® device must be registered in order to play purchased DivX Video-on-Demand (VOD) movies. To obtain your registration code, locate the DivX VOD section in your device setup menu. Go to vod.divx.com for more information on how to complete your registration.



HDMI, the HDMI logo, and High-Definition Multimedia Interface are trademarks or registered trademarks of HDMI licensing LLC in the United States and other countries.



SDHC Logo is a trademark of SD-3C, LLC.



A certificação é válida somente para o adaptador WiFi.

Philips

Modelo: WUB1110



1073-10-4906



(01) 07894401013577

“Este equipamento opera em caráter secundário, isto é, não tem direito a proteção contra interferência prejudicial, mesmo de estações do mesmo tipo, e não pode causar interferência a sistemas operando em caráter primário.”

4 Important

Read and understand all instructions before you use your home theater. If damage is caused by failure to follow instructions, the warranty does not apply.

Safety

Risk of electric shock or fire!

- Never expose the product and accessories to rain or water. Never place liquid containers, such as vases, near the product. If liquids are spilt on or into the product, disconnect it from the power outlet immediately. Contact Philips Consumer Care to have the product checked before use.
- Never place the product and accessories near naked flames or other heat sources, including direct sunlight.
- Never insert objects into the ventilation slots or other openings on the product.
- Where the mains plug or an appliance coupler is used as the disconnect device, the disconnect device shall remain readily operable.
- Disconnect the product from the power outlet before lightning storms.
- When you disconnect the power cord, always pull the plug, never the cable.

Risk of short circuit or fire!

- Before you connect the product to the power outlet, ensure that the power voltage matches the value printed on the back or bottom of the product. Never connect the product to the power outlet if the voltage is different.

Risk of injury or damage to the home theater!

- For wall-mountable products, use only the supplied wall mount bracket. Secure the wall mount to a wall that can support the combined weight of the product and the wall mount. Koninklijke Philips Electronics N.V. bears no responsibility for improper wall mounting that results in accident, injury or damage.
- For speakers with stands, use only the supplied stands. Secure the stands to the speakers tightly. Place the assembled stands on flat, level surfaces that can support the combined weight of the speaker and stand.

- Never place the product or any objects on power cords or on other electrical equipment.
- If the product is transported in temperatures below 5°C, unpack the product and wait until its temperature matches room temperature before connecting it to the power outlet.
- Visible and invisible laser radiation when open. Avoid exposure to beam.
- Do not touch the disc optical lens inside the disc compartment.
- Parts of this product can be made of glass. Handle with care to avoid injury and damage.

Risk of overheating!

- Never install this product in a confined space. Always leave a space of at least four inches around the product for ventilation. Ensure curtains or other objects never cover the ventilation slots on the product.

Risk of contamination!

- Do not mix batteries (old and new or carbon and alkaline, etc.).
- Remove batteries if they are exhausted or if the remote control is not to be used for a long time.
- Batteries contain chemical substances, they should be disposed of properly.

Risk of swallowing batteries!

- The product/remote control may contain a coin type battery, which can be swallowed. Keep the battery out of reach of children at all times!

Care for your product

- Do not insert any objects other than discs into the disc compartment.
- Do not insert warped or cracked discs into the disc compartment.
- Remove discs from the disc compartment if you are not using the product for an extended period of time.
- Use only microfiber cloth to clean the product.

Care of the environment



Your product is designed and manufactured with high quality materials and components, which can be recycled and reused.



When this crossed-out wheeled bin symbol is attached to a product it means that the product is covered by the European Directive 2002/96/EC. Please inform yourself about the local separate collection system for electrical and electronic products.

Please act according to your local rules and do not dispose of your old products with your normal household waste.

Correct disposal of your old product helps to prevent potential negative consequences for the environment and human health.



Your product contains batteries covered by the European Directive 2006/66/EC, which cannot be disposed with normal household waste.

Please inform yourself about the local rules on separate collection of batteries because correct disposal helps to prevent negative consequences for the environmental and human health.

3D health warning

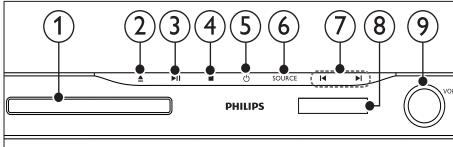
If you or your family has a history of epilepsy or photosensitive seizures, consult a medical professional before exposing yourself to flashing light sources, rapid image sequences or 3D viewing.

To avoid discomfort such as dizziness, headache or disorientation, we recommend not watching 3D for extended periods of time. If you experience any discomfort, stop watching 3D and do not immediately engage in any potentially hazardous activity (for example driving a car) until your symptoms have disappeared. If symptoms persist, do not resume watching 3D without consulting a medical professional first. Parents should monitor their children during 3D viewing and ensure they do not experience any discomfort as mentioned above. Watching 3D is not recommended for children under six years of age as their visual system is not fully developed yet.

5 Your home theater

Congratulations on your purchase, and welcome to Philips! To fully benefit from the support that Philips offers, register your home theater at www.philips.com/welcome.

Main unit



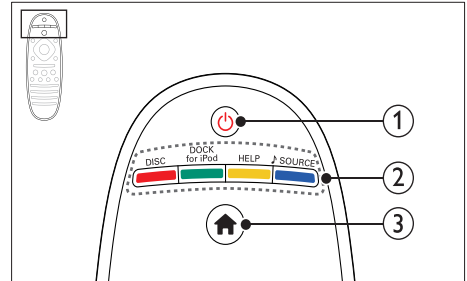
- ① **Disc compartment**
- ② **▲ (Open/Close)**
Press and hold for three seconds to open or close the disc compartment, or eject the disc.
- ③ **▶|| (Play/Pause)**
Start, pause or resume play.
- ④ **■ (Stop)**
Stop play.
- ⑤ **⏻ (Standby-On)**
Switch the home theater on or to standby.
- ⑥ **SOURCE**
Select an audio or video source for the home theater.
- ⑦ **⏮ / ⏭**
 - Skip to the previous or next track, chapter or file.
 - In radio mode, select a preset radio station.
- ⑧ **Display panel**
- ⑨ **Volume control wheel**

Remote control

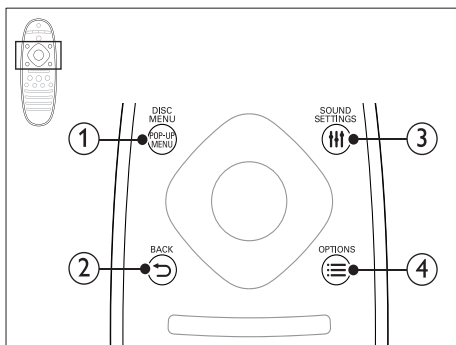
This section includes an overview of the remote control.

Overview

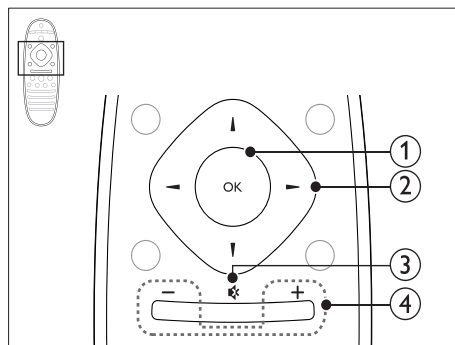
Control your home theater with the remote control.



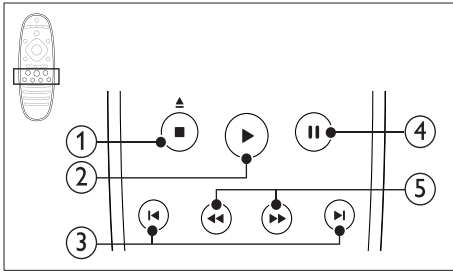
- ① **⏻ (Standby-On)**
 - Switch the home theater on or to standby.
 - When EasyLink is enabled, press and hold for at least three seconds to switch all connected HDMI CEC compliant devices to standby.
- ② **Source buttons / Color buttons**
 - **Color buttons:** Select tasks or options for Blu-ray discs.
 - **DISC:** Switch to disc source.
 - **DOCK for iPod:** Switch to Philips dock for iPod or iPhone.
 - **HELP:** Access the onscreen help.
 - **↵ SOURCE:** Select an audio input source or radio source.
- ③ **🏠 (Home)**
Access the home menu.



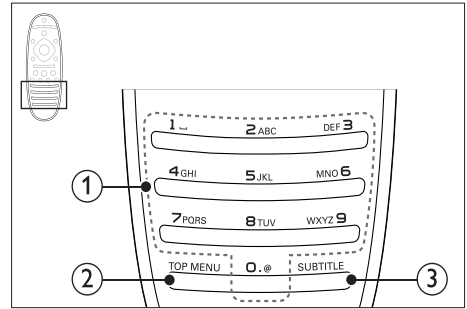
- ① **POP-UP MENU/DISC MENU**
Access or exit the disc menu when you play a disc.
- ② **↩ BACK**
 - Return to a previous menu screen.
 - In radio mode, press and hold to erase the current preset radio stations.
- ③ **≡ SOUND SETTINGS**
Access or exit sound options.
- ④ **☰ OPTIONS**
 - Access more play options while playing a disc or a USB storage device.
 - In radio mode, set a radio station.



- ① **OK**
Confirm an entry or selection.
- ② **Navigation buttons**
 - Navigate menus.
 - In radio mode, press left or right to start auto search.
 - In radio mode, press up or down to tune the radio frequency.
- ③ **⊘ (Mute)**
Mute or restore volume.
- ④ **+/- (Volume)**
Increase or decrease volume.



- ① **■ (Stop) / ▲ (Eject/ Open/Close)**
 - Stop play.
 - Press and hold for three seconds to open or close the disc compartment, or eject the disc.
- ② **▶ (Play)**
Start or resume play.
- ③ **◀ / ▶ (Previous/Next)**
 - Skip to the previous or next track, chapter or file.
 - In radio mode, select a preset radio station.
- ④ **|| (Pause)**
Pause play.
- ⑤ **◀◀ / ▶▶ (Fast Backward/Fast Forward)**
Search backwards or forward. Press repeatedly to change the search speed.



- ① **Alphanumeric buttons**
 - Enter values or letters (using SMS style entry).
 - In radio mode, select a preset radio station.
- ② **TOP MENU**
Access the main menu of a video disc.
- ③ **SUBTITLE**
Select subtitle language for video.

EasyLink controls

With Easylink, you can control your home theater and the TV with the following buttons on your home theater remote control (see 'EasyLink' on page 34).

- **⏻ (Standby-On):** Press and hold to switch your home theater, TV and the connected devices to standby.
- **▶ (Play):** When a video disc is in the disc compartment, wake up the TV from standby, and then play a disc.

6 Connect your home theater

theater

This section helps you connect your home theater to a TV and other devices.

For information about the basic connections of your home theater and accessories, see the quick start guide. For a comprehensive interactive guide, see www.connectivityguide.philips.com.

Note

- For identification and supply ratings, refer to the type plate at the back or bottom of the product.
- Before you make or change any connections, make sure that all devices are disconnected from the power outlet.

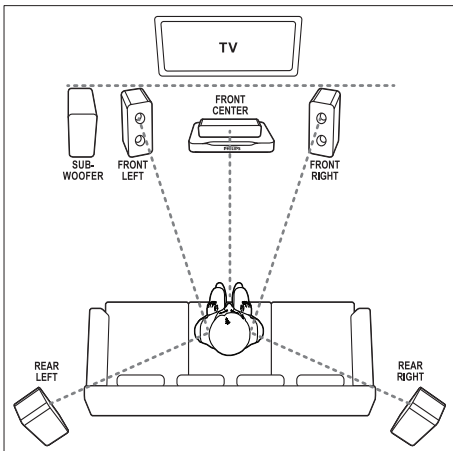
Speakers

Position, connect, and set up your speakers for best surround sound.

Position

Speaker position plays a critical role in setting up a surround sound effect.

For best results, place your speakers and the subwoofer as shown below.



Note

- Surround sound depends on factors such as room shape and size, type of wall and ceiling, windows and reflective surfaces, and speaker acoustics. Experiment with the speaker positions to find the optimum setting for you.

Follow these general guidelines, and then set up your speakers.

- 1 Seating position:**
This is the center of your listening area.
- 2 FRONT CENTER (front center) speaker:**
Place the center speaker directly in front of the seating position, either above or below your TV. Make sure that it is close to your ear height when you are seated.
- 3 FRONT LEFT (front left) and FRONT RIGHT (front right) speakers:**
Place the left and right speakers in the front, and equidistant from the center speaker in an arc, so that all the three speakers are at same distance from your seating position. For best effect, point the speakers towards the seating position and place the speakers close to the ear level (when seated).
- 4 REAR LEFT (rear left) and REAR RIGHT (rear right) speakers:**
Place the rear surround speakers to the left and right side of your seating position, either in line with it or slightly behind it. For best effect, point the speakers towards the seating position and place the speakers just above the ear level (when seated).
- 5 SUBWOOFER (subwoofer):**
Place the subwoofer at least one meter to the left or right of the TV. Leave about ten centimeter clearance from the wall.

Connect

Connect your speakers and the subwoofer to your home theater as described in the quick start guide.

Setup

Set up your speakers through the speaker setup menu.

- 1 Connect your speakers and subwoofer as described in the Quick start guide.
- 2 Press **Home** on your home theater remote control, and select **[Setup] > [Audio] > [Speaker Setup]**.
- 3 Enter the distance for each speaker, and then listen to the test tones and change the volume. Experiment a little with the speaker positions to find the ideal setting.

Wireless rear speakers

Convert the rear speakers of your home theater into wireless speakers by using a wireless module.

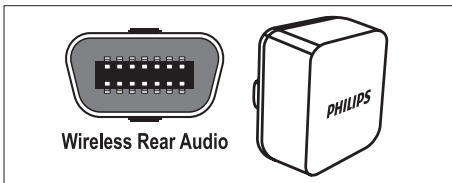
- The wireless transmitter connects to the **Wireless Rear Audio** connector on your home theater.
- The wireless receiver connects to the rear surround speakers and the power supply.

For more information, refer to the user manual of your wireless module.

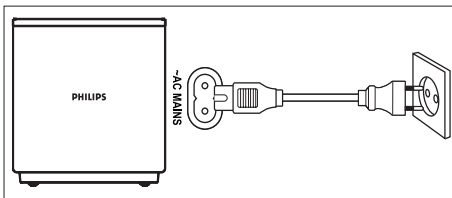
Wireless module - RWSS5510

Purchase the wireless module RWSS5510 (sold separately) from a Philips authorized dealer.

Wireless transmitter:



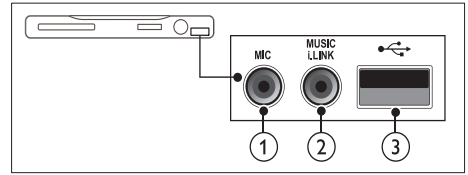
Wireless receiver:



Connectors

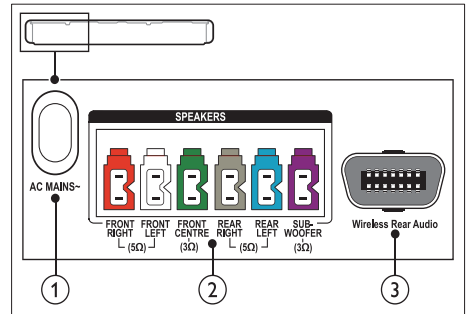
Connect other devices to your home theater.

Front



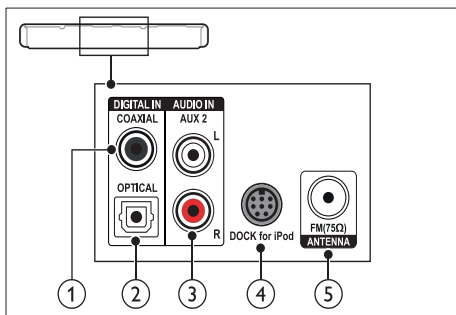
- ① **MIC (Available only in Asia Pacific and China)**
Audio input from a microphone.
- ② **MUSIC iLINK**
Audio input from an MP3 player.
- ③ **USB**
 - Audio, video or picture input from a USB storage device.
 - Connect to a Wi-Fi dongle (Model: Philips WUB1110).

Rear left



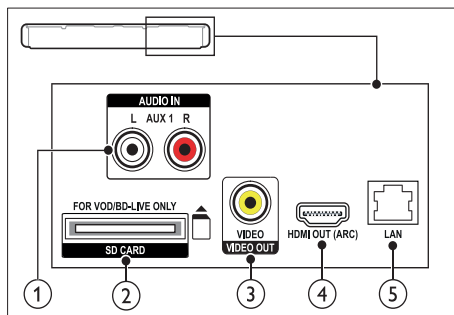
- ① **AC MAINS~**
Connect to the power supply.
- ② **SPEAKERS**
Connect to the supplied speakers and subwoofer.
- ③ **Wireless Rear Audio**
Connect to a Philips wireless module. (Model: Philips RWSS5510, sold separately)

Rear center



- ① **DIGITAL IN-OPTICAL**
Connect to an optical audio output on the TV or a digital device.
- ② **DIGITAL IN-COAXIAL**
Connect to a coaxial audio output on the TV or a digital device.
- ③ **AUDIO IN-AUX 2**
Connect to an analog audio output on the TV or an analog device.
- ④ **DOCK for iPod**
Connect to a Philips dock for iPod or iPhone. (Model: Philips DCK3060/DCK3061)
- ⑤ **ANTENNA FM 75 Ω**
Signal input from an antenna, cable or satellite.

Rear right



- ① **AUDIO IN-AUX 1**
Connect to an analog audio output on the TV or an analog device.
- ② **SD CARD (Not available in China)**
Slot for SD card. The SD card is used to rent online videos and access BD-Live.
- ③ **VIDEO OUT-VIDEO**
Connect to the composite video input on the TV.
- ④ **HDMI OUT (ARC)**
Connect to the HDMI input on the TV.
- ⑤ **LAN**
Connect to the LAN input on a broadband modem or router.

Connect to TV

Connect your home theater to a TV to watch videos. You can listen to audio from TV programs through your home theater speakers. Use the best quality connection available on your home theater and TV.

Option 1: Connect to TV through HDMI (ARC)

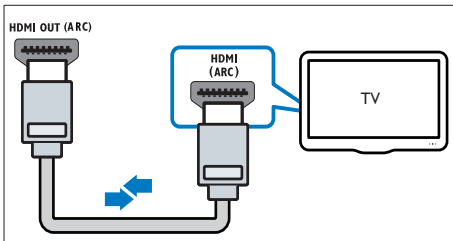
Best quality video

Your home theater supports HDMI version 1.4 - Audio Return Channel (ARC). If your TV is HDMI ARC compliant, connect your home theater to the TV through the HDMI ARC connection for easy and quick setup.

With HDMI ARC, you do not need an additional audio cable to play the audio from TV through your home theater.

- 1 Using a High Speed HDMI cable, connect the **HDMI OUT (ARC)** connector on your home theater to the **HDMI ARC** connector on the TV.

The **HDMI ARC** connector on the TV might be labeled **HDMI IN** or **HDMI**. For details on TV connectors, see the TV user manual.



- 2 On your TV, turn on HDMI-CEC. For details, see the TV user manual.

↳ When you play a disc on your home theater, the video is automatically displayed on TV and the audio is automatically played on the home theater.

- 3 If audio from the TV does not play automatically on your home theater, set up the audio manually (see 'Set up audio for connected devices' on page 18).

Option 2: Connect to TV through HDMI

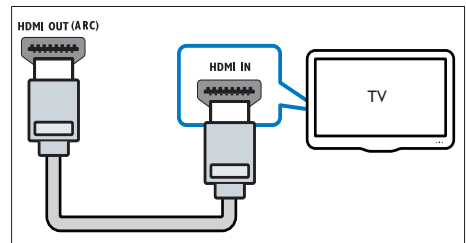
Best quality video

If your TV is not HDMI ARC compliant, connect your home theater to the TV through a standard HDMI connection.

With a standard HDMI connection, you need an additional audio cable to play the audio from the TV through your home theater (see 'Connect audio from TV and other devices' on page 17).

- 1 Using a High Speed HDMI cable, connect the **HDMI OUT (ARC)** connector on your home theater to the **HDMI** connector on the TV.

The HDMI connector on the TV might be labeled **HDMI IN**.



- 2 On your TV, turn on HDMI-CEC. For details, see the TV user manual.
↳ When you play a disc on your home theater, the video is automatically displayed on TV and the audio is automatically played on the home theater.

- 3 To play audio from TV programs through your home theater, connect an additional audio cable (see 'Connect audio from TV and other devices' on page 17).

- 4 If audio from the TV does not play automatically on your home theater, set up the audio manually (see 'Set up audio for connected devices' on page 18).

Note

- If your TV has a DVI connector, you can use an HDMI/DVI adapter to connect to TV.

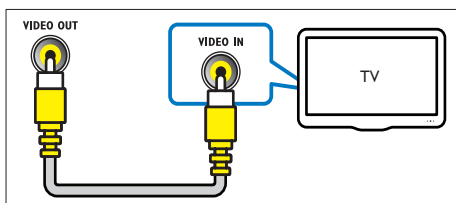
Option 3: Connect to the TV through composite video

Basic quality video

If your TV does not have HDMI connectors, connect your home theater to the TV through a composite connection. A composite connection does not support high-definition video.

With a composite connection, you need an additional audio cable to play the audio from the TV through your home theater (see 'Connect audio from TV and other devices' on page 17).

- Using a composite video cable, connect the **VIDEO** connector on your home theater to the composite video connector on the TV. The composite video connector might be labeled **AV IN**, **VIDEO IN**, **COMPOSITE**, or **BASEBAND**.



- On your TV, switch to the correct video input.
- To play audio from TV programs through your home theater, connect an additional audio cable (see 'Connect audio from TV and other devices' on page 17).

On your home theater, press **SOURCE** repeatedly to select the correct audio input.

Connect audio from TV and other devices

Play audio from TV or other devices through your home theater.

Use the best quality connection available on your TV, home theater, and other devices.

Note

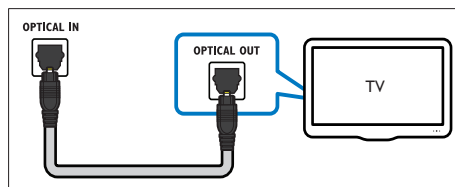
- The audio connections in this user manual are only recommendations. You can use other connections too.
- When your home theater and TV are connected through **HDMI ARC**, an audio connection is not required.

Option 1: Connect audio through a digital optical cable

Best quality audio

Using an optical cable, connect the **OPTICAL** connector on your home theater to the **OPTICAL OUT** connector on the TV or other device.

The digital optical connector might be labeled **SPDIF**, **SPDIF OUT**, or **OPTICAL**.

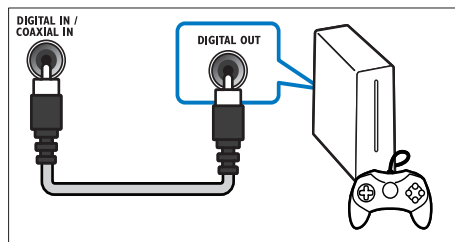


Option 2: Connect audio through a digital coaxial cable

Good quality audio

Using a coaxial cable, connect the **COAXIAL** connector on your home theater to the **COAXIAL/DIGITAL OUT** connector on the TV or other device.

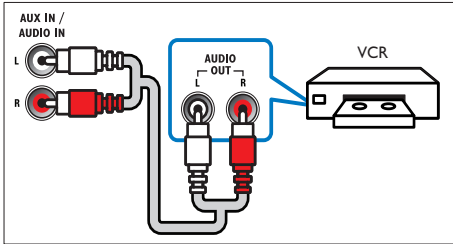
The digital coaxial connector might be labeled **DIGITAL AUDIO OUT**.



Option 3: Connect audio through analog audio cables

Basic quality audio

Using an analog cable, connect the **AUX** connectors on your home theater to the **AUDIO OUT** connectors on the TV or other device.



Set up audio for connected devices

When you connect a device to your home theater, check the audio settings.

- 1 On your TV and other devices, turn on HDMI-CEC. For details, see the user manual of the TV and the other device.
- 2 Select 'Amplifier' from the TV speakers menu. For details, see the TV user manual.
- 3 On your home theater, turn on System Audio Control, and then map the audio of the connected device to the correct connectors on your home theater (see 'Play audio from home theater' on page 35).

If the connected device is not HDMI-CEC compliant, press **SOURCE** repeatedly on your home theater to select the correct audio input.

Computers and the Internet

Connect your home theater to your computer network and the internet, and enjoy:

- **Multimedia content streamed from your computer:** Play music, photo, and video from a computer or other media server on your network (see 'Browse PC through DLNA' on page 30).
- **Online TV:** Browse Online TV services to access online information, games, news, music, and other services (see 'Browse Online TV' on page 32).
- **Software update:** Update the home theater software through the network (see 'Update software through the Internet' on page 39).

! Caution

- Before you try to connect the home theater to a computer network, familiarize yourself with the network router, media server software and networking principles. If necessary, read documentation that accompanies the network components. Philips is not responsible for lost, damaged, or corrupt data.

Wired connection

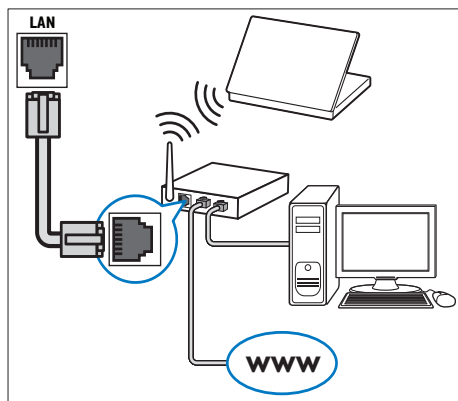
Connect your home theater to your router through a network cable.

What you need

- A network router (with DHCP enabled).
- A network cable (RJ45 straight cable).
- A computer with media server software installed (see 'Browse PC through DLNA' on page 30).
- For Online TV and software updates, make sure that the network router has access to the Internet, and is not restricted by firewalls or other security systems.

Set up the wired network

Connect your home theater to your router as shown below, and then switch on the devices.



- 1 Connect the home theater to a network router through a wired connection (see 'Wired connection' on page 18).
- 2 Turn on your TV, and switch to the correct source for the home theater.
- 3 Press **⬆** (Home).
- 4 Select **[Setup]**, and then press **OK**.
- 5 Select **[Network] > [Network Installation] > [Wired (Ethernet)]**, and then press **OK**.
- 6 Follow the instructions on the TV to complete the setup.
 - ↳ The home theater connects to the internet. If connection fails, select **[Retry]**, and then press **OK**.
- 7 Select **[Finish]**, and then press **OK** to exit.

Check wired network settings

- 1 Press **⬆** (Home).
- 2 Select **[Setup]**, and then press **OK**.
- 3 Select **[Network] > [View Network Settings]**, and then press **OK**.
 - ↳ The current network settings are displayed.

Wireless connection

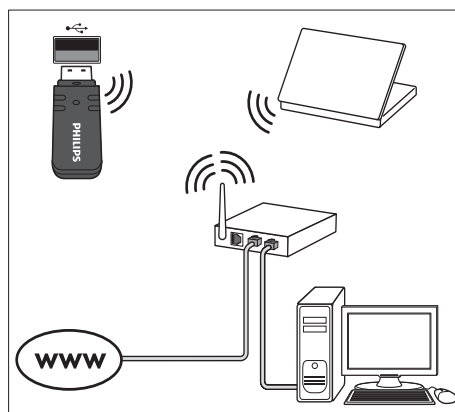
Connect your home theater to your router through a wireless connection.

What you need

- A network router (with DHCP enabled).
- A Wi-Fi dongle (Model: Philips WUB1110).
- A computer with media server software installed (see 'Set up media server software' on page 30).
- For Online TV and software update, make sure that the network router has access to the Internet and is not restricted by firewalls or other security systems.

Set up the wireless network

Connect your home theater to your router as shown below, and then switch on the devices.



- 1 Connect the home theater to a network router through a wireless connection (see 'Wireless connection' on page 19).
- 2 Turn on your TV, and switch to the correct source for the home theater.
- 3 Press **⬆** (Home).
- 4 Select **[Setup]**, and then press **OK**.
- 5 Select **[Network] > [Network Installation] > [Wireless (Wi-Fi)]**, and then press **OK**.
- 6 Follow the instructions on the TV to complete the setup.
 - ↳ The home theater connects to the internet. If connection fails, select **[Retry]**, and then press **OK**.
- 7 Select **[Finish]**, and then press **OK** to exit.

Check wireless network settings

- 1 Press **⬆** (Home).
- 2 Select **[Setup]**, and then press **OK**.
- 3 Select **[Network]** > **[View Wireless Settings]**, and then press **OK**.
↳ The current Wi-Fi settings are displayed.

Name your home theater

To easily identify your home theater on a network, name your home theater:

- 1 Turn on your TV, and switch to the correct source for the home theater.
- 2 Press **⬆** (Home).
- 3 Select **[Setup]**, and then press **OK**.
- 4 Select **[Network]** > **[Name your Product:]**, and then press **OK**.
- 5 Press the **Alphanumeric buttons** to enter the name.
- 6 Select **[Done]**, and then press **OK** to exit.

7 Use your home theater

This section helps you use the home theater to play media from a wide range of sources.

Before you start

- Make the necessary connections described in the quick start guide and the onscreen help.
- Complete the first-time setup. First-time setup appears when you turn on the home theater for the first time. If you do not complete the setup, you are prompted to complete it each time you turn on the home theater.
- Switch the TV to the correct source for the home theater.

Choose sound

This section helps you choose the ideal sound for your video or music.

- 1 Press **⏸** **SOUND SETTINGS**.
- 2 Press the **Navigation buttons** (left/ right) to access the sound options on the display.

Sound settings	Description
SOUND	Select a sound mode.
SURROUND	Select surround sound or stereo sound.
TREBLE	Change the high frequency output.
MID	Change the middle frequency output.
BASS	Change the low frequency output.
AUD SYNC	Delay the audio to match the video.

- 3 Select an option, and then press **OK**.
- 4 Press **⬅** **BACK** to exit.

If you do not press a button within a minute, the menu exits automatically.

Sound mode

Select predefined sound modes to suit your video or music.

- 1 Press **III SOUND SETTINGS**.
- 2 Select **SOUND**, and then press **OK**.
- 3 Press the **Navigation buttons** (up/down) to select a setting on the display:
 - **MOVIE**: Enjoy a cinematic audio experience, specially enhanced for movies.
 - **MUSIC**: Recreate the original recording environment of your music, in the studio or at a concert.
 - **ORIGINAL**: Experience the original sound of your movies and music, without added sound effects.
 - **NEWS**: Hear every word with optimized speech and clear vocals.
 - **GAMING**: Enjoy thrilling arcade sounds, ideal for action-packed video games or loud parties.
- 4 Press **OK** to confirm.

Surround sound mode

Experience an immersive audio experience with surround sound modes.

- 1 Press **III SOUND SETTINGS**.
- 2 Select **SURROUND**, and then press **OK**.
- 3 Press the **Navigation buttons** (up/down) to select a setting from your display:
 - **AUTO**: Surround sound based on the audio stream.
 - **5CH STER**: Enhanced stereo sound. Ideal for party music.
 - **MULTI-CH**: Immersive multi-channel sound for an enhanced movie experience.
 - **STEREO**: Two-channel stereo sound. Ideal for listening to music.
- 4 Press **OK** to confirm.

Equalizer

Change the high frequency (treble), mid frequency (mid), and low frequency (bass) settings of the home theater.

- 1 Press **III SOUND SETTINGS**.
- 2 Select **TREBLE, MID** or **BASS**, and then press **OK**.
- 3 Press the **Navigation buttons** (up/down) to change the frequency.
- 4 Press **OK** to confirm.

Discs

Your home theater can play DVDs, VCDs, CDs, and Blu-ray discs. It can also play discs that you've made at home, such as CD-R discs of photos and music.

What you need

For audio or 2D video:

- Audio and video connection between your home theater and the TV.
- An audio or a video disc.

For 3D video:

- A 3D TV.
- An HDMI connection between your home theater and the TV.
- A Blu-ray 3D disc.
- A pair of 3D glasses that are compatible with your 3D TV.

Play discs

- 1 Insert a disc into the home theater.
 - ↳ Your TV switches to the correct source and the disc plays automatically.
- 2 If the disc does not play automatically, press **DISC** or select **[play Disc]** in the home menu, and then press **OK**.
- 3 For a 3D video, put on your 3D glasses.
- 4 Press the play buttons to control play (see 'Play buttons' on page 22).



Note

- For a 3D video, during search forward or backward, and in some other play modes, the video displays in 2D. It returns to 3D display when you play normally again.



Tip

- To avoid flickering, change the brightness of the display (see 'Display panel' on page 38).

Play buttons

Button	Action
Navigation buttons	Navigate menus.
OK	Confirm an entry or selection.
▶ (Play)	Start or resume play.
⏸	Pause play.
■	Stop play.
⏮ / ⏭	Skip to the previous or next track, chapter or file.
⏪ / ⏩	Fast backwards or fast forwards. Press repeatedly to change the search speed.
Navigation buttons (up/down)	Rotate the picture clockwise or counter-clockwise.
SUBTITLE	Select subtitle language for video.
POP-UP MENU/DISC MENU	Access or exit the disc menu.
☰ OPTIONS	Access the advanced options when you play your audio, video, or media files (see 'Audio, video, and picture options' on page 25).

For video formats such as DivX and WMV:

- To stop play, press ■.
- To resume the video from where you stopped, press ▶ (Play).
- To play the video from the start, press OK.

Play 3D discs in 2D mode

If you do not have a 3D TV, watch the 3D disc in 2D mode.

- 1 Press **⬆** (Home).
- 2 Select **[Setup] > [Video] > [Watch 3D video] > [Off]**.
- 3 Press **OK**.
- 4 Play your Blu-ray 3D disc.
 - ↳ The 3D video is displayed in 2D.

Display menu for VCD and SVCD

Display the content menu on VCD and SVCD discs.

- 1 Press **⬆** (Home).
- 2 Select **[Setup] > [Preference]**, and then press **OK**.
- 3 Select **[VCD PBC] > [On]**, and then press **OK**.



Note

- To skip the content menu, select **[Off]**.

Synchronize picture and sound

If the audio and video are not synchronized, delay the audio to match the video.

- 1 Press **⏸ SOUND SETTINGS**.
- 2 Select **AUD SYNC**, and then press **OK**.
- 3 Press the **Navigation buttons** (up/down) to synchronize the audio with the video.
- 4 Press **OK** to confirm.

Bonus View on Blu-ray

On Blu-ray discs that support the Bonus View, enjoy extra content, such as a director's commentary, while you watch the main feature. Bonus View is also known as picture-in-picture.

- 1 Enable Bonus View (picture-in-picture) in the Blu-ray disc menu.
- 2 While you play the main feature, press **☰ OPTIONS**.
 - ↳ The options menu is displayed.
- 3 Select **[PIP Selection] > [PIP]**, and then press **OK**.
 - ↳ Depending on the video, PIP option [1] or [2] is displayed.
 - ↳ The picture-in-picture video is displayed in a small window.
- 4 Select **[2nd Audio Language]** or **[2nd Subtitle Language]**, and then press **OK**.
- 5 Select the language, and then press **OK**.



Note

- To turn off Bonus View, press **☰ OPTIONS**, select **[PIP Selection] > [Off]**, and then press **OK**.

BD-Live on Blu-ray

On Blu-ray discs with BD-Live content, access additional features, such as internet chats with the director, the latest movie trailers, games, wallpaper, and ringtones.

What you need

- a Blu-ray disc with BD-Live content
- an internet connection
- a storage device:
 - a USB storage device, with at least 1 GB of memory, or
 - an SD memory card of type SDHC Class 6, with at least 8 GB of memory.



Note

- BD-Live services vary from country to country, and depend on the disc.
- When you use BD-Live, data on the disc and home theater are accessed by the content provider.

Access BD-Live with a USB storage device

- 1 Connect your home theater to the home network and internet (see 'Computers and the Internet' on page 18).
- 2 Connect the USB storage device to the home theater.
 - The USB storage device is used to store the downloaded BD-Live content.
- 3 Press **⬆** (Home).
- 4 Select **[Setup]**, and then press **OK**.
- 5 Select **[Advanced]** > **[Local Storage]** > **[USB]**, and then press **OK**.
- 6 Select the BD-Live icon in the disc menu, and then press **OK**.
 - ↳ BD-Live starts to load. The loading time depends on the disc and your internet connection.
- 7 Press the **Navigation buttons** to navigate BD-Live, and then press **OK** to select an item.

Access BD-Live with an SD card

- 1 Connect your home theater to the home network and internet (see 'Computers and the Internet' on page 18).
- 2 Insert the SD memory card into the **SD CARD** slot on your home theater.
 - ↳ The first time you insert an SD memory card, the card is formatted. After formatting, leave the card in the home theater (see 'Format an SD card' on page 33).
- 3 Press **⬆** (Home).
- 4 Select **[Setup]**, and then press **OK**.
- 5 Select **[Advanced]** > **[Local Storage]** > **[SD card]**, and then press **OK**.
- 6 Select the BD-Live icon in the disc menu, and then press **OK**.
 - ↳ BD-Live starts to load. The loading time depends on the disc and your internet connection.
- 7 Press the **Navigation buttons** to navigate BD-Live, and then press **OK** to select an item.

Clear memory

If your storage device does not have enough memory for the BD-Live content, clear the memory on the storage device.

- 1 Press **⬆** (Home).
- 2 Select **[Setup]**, and then press **OK**.
- 3 Select **[Advanced]** > **[Clear memory]**, and then press **OK**.
 - ↳ This clears the local memory and deletes the BD-Live files that you downloaded on your storage device.

Disable BD-Live

To restrict access to BD-Live, turn on the BD-Live security.

- 1 Press **▲** (Home).
- 2 Select **[Setup]**, and then press **OK**.
- 3 Select **[Advanced] > [BD-Live security] > [On]**, and then press **OK**.
↳ BD-Live access is restricted.

Note

- You cannot restrict internet access on commercial Blu-ray discs.

USB storage devices

Enjoy pictures, audio and video on a USB storage device.

What you need

- A USB storage device that is formatted for FAT or NTFS file systems, and complies with the Mass Storage Class.
- A USB extension cable, if the USB storage device does not fit into the connector.

Note

- You can use digital cameras connected by USB if they can play the files without using a special computer program.
- To play DivX DRM - protected files from a USB storage device, connect your home theater to a TV through an HDMI cable.

Play files

- 1 Connect the USB storage device to the home theater.
- 2 Press **▲** (Home).
↳ The home menu is displayed.
- 3 Select **[browse USB]**, and then press **OK**.
↳ A content browser is displayed.
- 4 Select a file, and then press **OK**.
- 5 Press the playback buttons to control play (see 'Play buttons' on page 24).

Play buttons

Button	Action
Navigation buttons	Navigate menus.
OK	Confirm an entry or selection.
▶ (Play)	Start or resume play.
II	Pause play.
■	Stop play.
⏮ / ▶	Skip to the previous or next track, chapter or file.
⏪ / ⏩	Fast backwards or fast forwards. Press repeatedly to change the search speed.
Navigation buttons (up/down)	Rotate the picture clockwise or counter-clockwise.
SUBTITLE	Select subtitle language for video.
☰ OPTIONS	Access the advanced options when you play your audio, video, or media files (see 'Audio, video, and picture options' on page 25).

For video formats such as DivX and WMV:

- To stop play, press **■**.
- To resume the video from where you stopped, press **▶ (Play)**.
- To play the video from the start, press **OK**.

DivX

Play DivX videos from :

- a disc (see 'Discs' on page 21),
- a USB storage device (see 'USB storage devices' on page 24), or
- an online video store (see 'Rent online video' on page 33).

Note

- To play DivX DRM protected files from a disc, a USB storage device, or an online video store, connect your home theater to a TV through an HDMI cable.

VOD code for DivX

Before you purchase DivX videos and play them on your home theater, register the home theater on www.divx.com using the DivX VOD code.

- 1 Press **⬆** (Home).
- 2 Select **[Setup]**, and then press **OK**.
- 3 Select **[Advanced]** > **[DivX® VOD Code]**, and then press **OK**.
 - ↳ The DivX VOD registration code for your home theater is displayed.

Subtitles

If your video has subtitles in multiple languages, select a subtitle language.

- 1 While playing video, press **SUBTITLE** to select a language.

Note

- Make sure that the subtitle file has the same name as the video file. For example, if the video file is named 'movie.avi', save the subtitle file as 'movie.srt' or 'movie.sub'.
- Your home theater can play subtitle files in the following formats: .srt, .sub, .txt, .ssa, .ass, smi, and .sami. These files do not appear in the file navigation menu.
- If the subtitles do not appear correctly, change the character set.

Subtitle character set

If the subtitles do not appear correctly, change the character set that supports the DivX or RMVB/RM subtitle.

- 1 Press **≡ OPTIONS**.
 - ↳ The options menu is displayed.
- 2 Press the **Navigation buttons** to select **[Character Set]**, and then press **OK**.
- 3 Select a character set.

LATAM

Character Set	Language
[Standard]	English, Albanian, Danish, Dutch, Finnish, French, Gaelic, German, Italian, Kurdish (Latin), Norwegian, Portuguese, Spanish, Swedish and Turkish
[Central Europe]	Albanian, Croat, Czech, Dutch, English, German, Hungarian, Irish, Polish, Romanian, Slovak, Slovene and Sorbian
[Cyrillic]	Bulgarian, Belorussian, English, Macedonian, Moldavian, Russian, Serbian and Ukrainian
[Greek]	Greek

Audio, video, and picture options

Use advanced features when you play audio, video, or media files from a disc or a USB storage device.

Audio options

While playing audio, repeat an audio track, a disc, or a folder.

- 1 Press **≡ OPTIONS** repeatedly to cycle through the following functions:
 - **RPT TRAC / RPT FILE**: Repeat the current track or file.
 - **RPT DISC / RPT FOLD**: Repeat all the tracks on the disc or the folder.
 - **RPT RAND**: Play audio tracks in random order.
 - **RPT OFF**: Turn off the repeat mode.

Video options

While watching video, select options such as subtitles, audio language, time search, and picture settings. Depending on the video source, some options are not available.

- 1 Press **≡ OPTIONS**.
↳ The video options menu is displayed.
- 2 Press the **Navigation buttons** and **OK** to select and change:
 - **[Audio Language]**: Select audio language for video.
 - **[Subtitle Language]**: Select subtitle language for video.
 - **[Subtitle Shift]**: Change the subtitle position on the screen.
 - **[Info]**: Display information about what is playing.
 - **[Character Set]**: Select a character set that supports the DivX subtitle.
 - **[Time Search]**: Skip to a specific part of the video by entering the time of the scene.
 - **[2nd Audio Language]**: Select the second audio language for Blu-ray video.
 - **[2nd Subtitle Language]**: Select the second subtitle language for Blu-ray video.
 - **[Titles]**: Select a specific title.
 - **[Chapters]**: Select a specific chapter.
 - **[Karaoke]** (Available only in Asia Pacific and China): Change the karaoke settings.
 - **[Angle List]**: Select a different camera angle.
 - **[Menus]**: Display the disc menu.
 - **[PIP Selection]**: Display Picture-in-Picture window when playing a Blu-ray disc that supports the Bonus View.
 - **[Zoom]**: Zoom into a video scene or picture. Press the **Navigation buttons** (left/right) to select a zoom factor.
 - **[Repeat]**: Repeat a chapter or title.
 - **[Repeat A-B]**: Mark two points within a chapter or track to repeat play, or turn off the repeat mode.
 - **[Picture Settings]**: Select a predefined color setting.

Picture options

While viewing a picture, zoom into the picture, rotate it, add animation to a slideshow, and change the picture settings.

- 1 Press **≡ OPTIONS**.
↳ The picture options menu appears.
- 2 Press the **Navigation buttons** and **OK** to select and change the following settings:
 - **[Rotate +90]**: Rotate the picture 90 degree clockwise.
 - **[Rotate -90]**: Rotate the picture 90 degree counter-clockwise.
 - **[Zoom]**: Zoom into a video scene or picture. Press the **Navigation buttons** (left/right) to select a zoom factor.
 - **[Info]**: Display picture information.
 - **[Duration per slide]**: Select the display speed for each picture in a slide show.
 - **[Slide Animation]**: Select animation for the slide show.
 - **[Picture Settings]**: Select a predefined color setting.
 - **[Repeat]**: Repeat a selected folder.

Slideshows

While playing audio, access fun features such as picture and musical slideshows.

Picture slideshows

View a slideshow of your pictures stored in your disc or a USB storage device.

- 1 Select a picture from a disc or USB storage device, and then press **▶ (Play)**.
- 2 Press **≡ OPTIONS**.
- 3 Press **Navigation buttons** and **OK** to select the following settings:
 - **[Slide Animation]**: Select an animation for the slideshow.
 - **[Duration per slide]**: Select a display speed for each picture in a slideshow.
- 4 Press **■** to stop the slideshow.

Musical slideshows

Create a musical slideshow to play music and pictures at the same time.

- 1 Select a music track, and then press **OK**.
- 2 Press **↶ BACK**, and go to the picture folder.
- 3 Select a picture, and then press **▶ (Play)** to start the slideshow.
- 4 Press **■** to stop slideshow.
- 5 Press **■** again to stop music.

Radio

Listen to FM radio on your home theater; and store up to 40 radio stations.

What you need

- FM antenna.

Note

- AM and digital radio are not supported.
- If no stereo signal is detected, you are prompted to install the radio stations again.
- For the best reception, place the antenna away from the TV or other sources of radiation.

Tune stations

- 1 Connect the FM antenna as described in the quick start guide.
- 2 Press **♪ SOURCE** repeatedly until **RADIO** appears on the display panel.
 - ↳ If you have already installed the radio stations, the last channel that you listened to is played.
 - ↳ If you have not installed any radio stations, the message **AUTO INSTALL... PRESS PLAY** appears on the display panel. Press **▶ (Play)**.
- 3 Press the following buttons to listen or to change radio stations:

Button	Action
◀/▶ or Alphanumeric buttons	Select a preset radio station.
Navigation buttons (left/right)	Search for a radio station.
Navigation buttons (up/down)	Fine tune a radio frequency.
■	Press to stop the installation of radio stations.
↶ BACK	Press and hold to erase the preset radio station.
☰ OPTIONS	Manual: Press once to access program mode, and press again to store the radio station. Automatic: Press and hold for three seconds to reinstall the radio stations.

Listen to radio

- 1 Press **♪ SOURCE** repeatedly until **RADIO** appears on the display panel.
 - To listen to a preset station, press **◀** or **▶**.
 - To search for a radio station, and then listen, press **Navigation buttons** (left/right).
- 2 Press **+/- (Volume)** to change the volume.

Tuning grid

In some countries, you can toggle the FM tuning grid between 50 kHz and 100 kHz. Switching the tuning grid erases all preset radio stations.

- 1 Press **♪ SOURCE** repeatedly until **RADIO** appears on the display panel.
- 2 Press **■**.
- 3 Press and hold **▶ (Play)** to toggle between 50 kHz or 100 kHz.

MP3 player

Connect your MP3 player to play your audio files or music.

What you need

- An MP3 player.
- A 3.5mm stereo audio cable.

Play music

- 1 Connect the MP3 player to the home theater as described in the quick start guide.
- 2 Press **⏮ SOURCE** repeatedly until **MUSIC I-LINK** appears on the display panel.
- 3 Press the buttons on the MP3 player to select and play audio files or music.

iPod or iPhone

When you connect a Philips dock for iPod/iPhone, you can use the home theater to play music, movies and photos from your iPod or iPhone.

What you need

- A Philips dock (Model: Philips DCK3060/DCK3061).
- A yellow composite cable.



Note

- Charge your iPod/iPhone on the dock while the home theater is in iPod mode.

Dock your iPod or iPhone

- 1 Move the slide at the bottom of the dock to **STANDARD**, and then connect the dock to the home theater.
- 2 Connect the yellow composite cable to the dock and TV.
- 3 Switch on the iPod or iPhone, and place it on the dock.

Play music

- 1 Dock your iPod or iPhone (see 'Dock your iPod or iPhone' on page 28).
- 2 Press **DOCK for iPod** on the home theater remote control.
- 3 Browse on the iPod or iPhone screen to select music tracks.
 - To view the playlist on your TV and use the home theater remote control to select a track, press **DOCK for iPod** again.

Play video and slideshows

- 1 Dock your iPod or iPhone (see 'Dock your iPod or iPhone' on page 28).
- 2 On the home theater remote control, press **⬆ (Home)**.
- 3 Select **[browse iPod]**, and then press **OK**.
- 4 Switch the TV to the **AV/VIDEO** source (corresponding to the yellow composite cable).
 - ↳ The TV screen goes blank.
- 5 Browse on the iPod or iPhone screen to select videos or photos.
- 6 Press **▶ (Play)** to play the videos or photos.

Use smartphone

Turn your iPhone or Android smartphone into a virtual remote control, or use it to browse the contents of a disc or USB storage device on your home theater.

What you need

- An iPhone (iOS 3.1.3 and above) or Android (Android 2.1 and above) smartphone.
- A wired or wireless home network.

Before you start

- Connect your home theater to your home network (see 'Computers and the Internet' on page 18).
- Name your home theater (see 'Name your home theater' on page 20).
- Connect your smartphone to the same home network. For details, see your smartphone user manual.

Download MyRemote application

Download the Philips application, **MyRemote** (MyRemote) to your smartphone. This application is free.

Note

- Philips **MyRemote** is only available for iPhones and Android smartphones.

- 1 Tap the **App Store** (App Store) icon on the iPhone or the **Market** (Market) icon on the Android smartphone.
- 2 Search for 'Philips **MyRemote**' application.
- 3 Follow the instructions on your smartphone to download the application.
 - ↳ The **MyRemote** (MyRemote) icon is added to the home screen of your smartphone.

Access MyRemote application

Access the **MyRemote** application from your smartphone, and then identify your home theater on the home network.

- 1 Tap **MyRemote** (AV remote) on your iPhone.
 - ↳ Your home theater and the other devices on the network are displayed on your iPhone. A browsing bar with **Devices**, **Remote**, and **Source** tabs is also displayed.
- 2 If your home theater is not found, check the network connection (see 'Computers and the Internet' on page 18). Then, tap the **Devices** (Devices) tab on your smartphone to search again.
- 3 Tap your home theater icon on the smartphone.
 - ↳ The virtual remote control is displayed on the smartphone.
- 4 To exit the application, press the home button on your smartphone.

Use your smartphone as a remote control

The virtual remote control is displayed in multiple screens on the smartphone. To access the buttons, swipe the smartphone screen to the left or right.

Only the control buttons that are relevant to the play mode are enabled on your smartphone. For example, if you play pictures, only the remote control buttons that are used to control the pictures are enabled. However, if you play a video, additional buttons, such as **SUBTITLE** and **TOP MENU**, are enabled on your smartphone.

- 1 Launch the application on your smartphone (see 'Access MyRemote application' on page 29).
 - ↳ Depending on the play mode, the relevant remote control buttons are enabled.
- 2 If the remote control buttons do not appear, tap the **Remote** (Remote) tab on your smartphone.
- 3 Swipe to the left or right screen to access more buttons.

Note

- Some control functions are not available on smartphones.

Browse a disc or USB storage device

Browse a disc or USB storage device from your smartphone, and play an audio, video, or multimedia file.

- 1 Launch the remote control application on your smartphone (see 'Access MyRemote application' on page 29).
- 2 Load a data disc or connect a USB storage device into your home theater.
- 3 On your smartphone, tap the **Source** (Source) tab, and then select **DISC** (DISC) or **USB** (USB).
 - ↳ The folders in your disc or USB storage device are displayed.
- 4 Select a folder to browse, and then select a file to play.
 - ↳ The relevant remote control buttons are enabled on your smartphone.
- 5 To access the remote control while you browse the contents, tap the **Remote** (Remote) tab on your smartphone.

Browse PC through DLNA

When you connect your home theater to your home network, you can enjoy music, photo, and video stored on a computer or other media server on the network.

What you need

- A wired or wireless home network, connected with a Universal Plug and Play (uPnP) router.
- A Philips wireless USB adapter or a LAN cable to connect your home theater to your home network.
- A media server such as:
 - PC running Windows Media Player 11 or higher; or
 - Mac running Twonky Media Server.

Note

- For help to use other media servers, such as TVersion, see the web site of the media server.

Set up media server software

To enable media sharing, set up the media server software.

Before you start

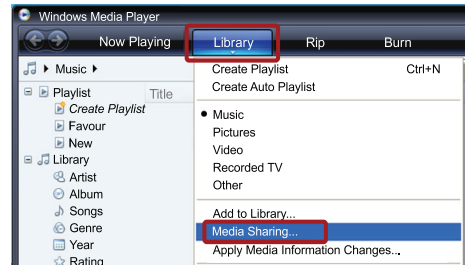
- Connect your home theater to your home network (see 'Computers and the Internet' on page 18).
- Connect your computer to the same home network (see 'Computers and the Internet' on page 18).
- Make sure that your PC firewall allows you to run Windows Media Player programs.
- Switch on your computer and the router.

Microsoft Windows Media Player 11

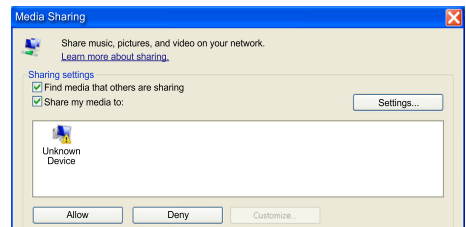
Note

- Depending on your version of Microsoft Windows, the screens might look different to the following screens.

- 1 Start Windows Media Player on your PC.
- 2 Click the **Library** tab, and then select **Media Sharing**.



- 3 The first time you select **Media Sharing** on your PC, a pop-up screen appears. Check the **Share my media box** and click **OK**.
↳ The **Media Sharing** screen is displayed.
- 4 In the **Media Sharing** screen, make sure that you see a device marked as **Unknown Device**.

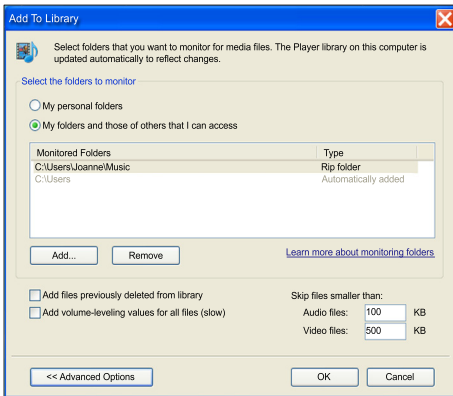


- ↳ If you don't see an unknown device after a minute or so, check that your PC firewall is not blocking the connection..

- 5 Select the unknown device and click **Allow**.
↳ A green tick appears next to the device.
- 6 By default, Windows Media Player shares from these folders: **My Music**, **My Pictures**, and **My Videos**. If your files are in other folders, select **Library** > **Add to Library**.



- ↳ The **Add to Library** screen is displayed.
- ↳ If necessary, select **Advanced options** to display a list of monitored folders.



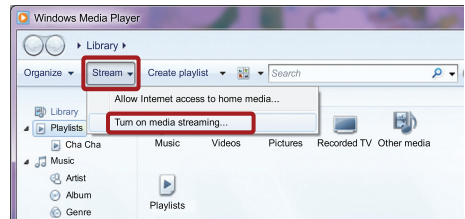
- 7 Select **My folders and those of others I can access**, and then click **Add**.
- 8 Follow the onscreen instructions to add the other folders that contain your media files.

Microsoft Windows Media Player 12

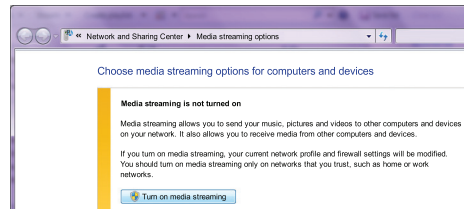
Note

- Depending on your version of Microsoft Windows, the screens might look different to the following screens.

- 1 Start Windows Media Player on your PC.
- 2 In Windows Media Player, click the **Stream** tab, and then select **Turn on media streaming**.
 - ↳ The **Media streaming options** screen is displayed.

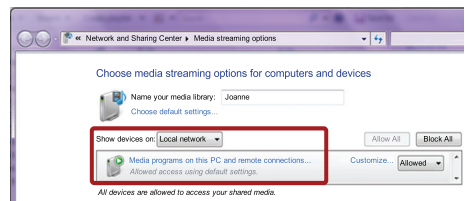


- 3 Click **Turn on media streaming**.



- ↳ You return to Windows Media Player screen.

- 4 Click the **Stream** tab and select **More streaming options**.
 - ↳ The **Media streaming options** screen is displayed.



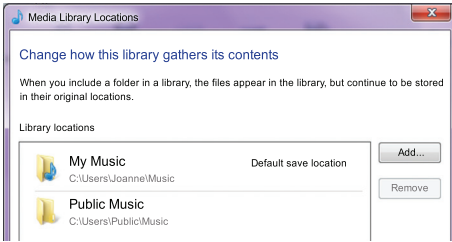
- 5 Make sure that you see a media program in the **Local network** screen.

- ↳ If you don't see a media program, check that your PC firewall is not blocking the connection.

- 6 Select the media program and click **Allowed**.

- ↳ A green arrow appears next to the media program.

- 7 By default, Windows Media Player shares from these folders: **My Music**, **My Pictures**, and **My Videos**. If your files are in other folders, click the **Organize** tab and select **Manage libraries > Music**.
 - ↳ The **Music Library Locations** screen is displayed.



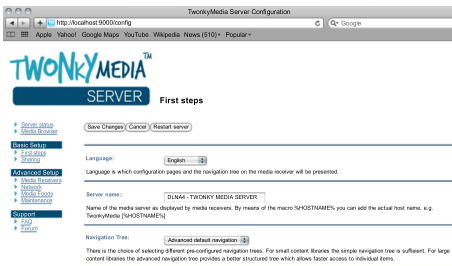
Follow the onscreen instructions to add the other folders that contain your media files.

Macintosh OS X Twonky Media (v4.4.2)

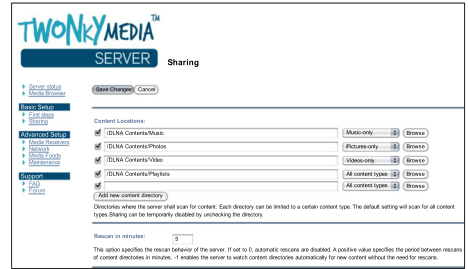
Note

- Depending on which version of the Mac operating system you use, your screens might look different to the following screens.

- Visit <http://www.twonkymedia.com> to purchase the software, or download a free 30-day trial to your Macintosh.
- Start Twonky Media on the Macintosh.
- In the Twonky Media Server screen, select **Basic Setup** and **First Steps**.
↳ The **First steps** screen is displayed.



- Type a name for your media server, and then click **Save changes**.
- Back in the Twonky Media screen, select **Basic Setup** and **Sharing**.
↳ The **Sharing** screen is displayed.



- Browse and select folders to share, and then select **Save Changes**.

- ↳ Your Macintosh rescans the folders automatically so that they are ready to share.

Play files from your PC

Note

- Before you play multimedia content from the computer, make sure that the home theater is connected to the home network, and the media server software is properly set up.

- Switch your TV to the correct HDMI source for your home theater.
- Press **↑ (Home)**.
↳ The home menu is displayed.
- Select [**browse PC**], and then press **OK**.
↳ A content browser is displayed.
- Select a file, and then press **OK**.
- Press the playback buttons to control play (see 'Play buttons' on page 24).

Browse Online TV

Use Online TV to access variety of internet applications and specially adapted internet websites. For interactive discussions on Online TV services, visit the Online TV forum at www.supportforum.philips.com

Note

- Koninklijke Philips Electronics N.V. bears no responsibility for content provided by Online TV service providers.

Access Online TV

- 1 Connect your home theater to a home network and the Internet (see 'Computers and the Internet' on page 18).
- 2 Press **⬆️ (Home)**.
 - ↳ The home menu appears.
- 3 Select **[browse Online TV]**, and then press **OK**.
 - ↳ The Online TV home page is displayed. The first time you access Online TV, follow the onscreen instructions to agree to the terms and conditions, and then register with Club Philips.
- 4 Press the **Navigation buttons** to select **App Gallery** (App Gallery) or **Internet** (Internet), and then press **OK**.
 - Access **App Gallery** (App Gallery) to add more Apps to your screen.
 - Access **Internet** (Internet) to browse the Internet.
- 5 Press **↩️ BACK** to return to the previous page, or press **⬆️ (Home)** to exit.

Browse internet

- 1 Press the **Navigation buttons** to select **Internet** (Internet) from the Online TV home page, and then press **OK**.
- 2 Select the address bar, and then press the **Alphanumeric buttons** to enter the URL of the website.
 - To clear the text in the address bar, press **↩️ BACK**.
 - To display the onscreen keyboard, follow the instructions on the screen.
- 3 After you enter the URL, press the **Navigation buttons** to select the arrow next to the address bar, and then press **OK** to confirm.
- 4 While browsing internet, press **☰** **OPTIONS** to access the address bar, shortcut keys and other advanced options.
- 5 Press **↩️ BACK** to return to the previous page, or press **⬆️ (Home)** to exit.

Clear browsing history

Clear the browsing history to remove passwords, cookies, and browsing data from your home theater.

- 1 Press **⬆️ (Home)**.
- 2 Select **[Setup]**, and then press **OK**.
- 3 Select **[Network] > [Clear Online TV Memory]**, and then press **OK**.

Rent online video

Not available in China

Rent videos from online stores, through your home theater. You can watch them right away or later.

Many online video stores offer a huge choice of video, with different rental prices, periods, and conditions. For some stores, you must create an account before you can rent.

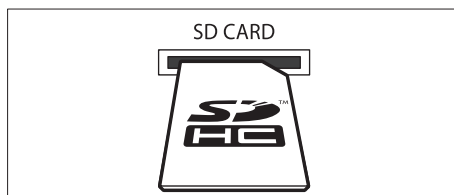
What you need

- A high-speed internet connection to the home theater.
- An HDMI connection between your home theater and TV.
- An SD memory card of type SDHC Class 6, with at least 8 GB of memory.

Format an SD card

Before you download any online video or BD-Live content, your SD card must be in the SD card slot of your home theater, and formatted.

- 1 Switch your TV to the correct HDMI source for your home theater.
- 2 Insert the SD memory card into the **SD CARD** slot on your home theater.



- 3 Follow the onscreen instructions to format the card.
 - ↳ Any content on the card is erased during formatting.
- 4 After formatting, leave the card in the **SD CARD** slot.

Rent and play online video

- 1 Connect your home theater to the home network and internet (see 'Computers and the Internet' on page 18).
- 2 Press **⬆** (**Home**).
- 3 Select **[browse Online TV]** and press **OK**.
 - ↳ The online services available in your country are displayed.
- 4 Press the **Navigation buttons** to go to a video store, and then press **OK**.
- 5 If prompted, follow the video store instructions to register or log in to an account.
 - ↳ You see an option to rent videos.
 - ↳ If you have rented videos and are still within the rental period, you also see an option to watch the videos.
- 6 Follow the video store instructions to rent or watch a video.
 - The video is downloaded to your SD memory card. You can watch it now or at any time within the rental period.
 - When you have downloaded a video to your card, you can watch it only on your home theater. You can't move the card and watch it on another device.
 - If you move the card and format it in another device, your downloaded video is erased. Download your video again before you watch.
- 7 Press the play buttons on your remote control to play, pause, search, or stop the video.

EasyLink

The home theater supports Philips EasyLink, which uses the HDMI-CEC (Consumer Electronics Control) protocol. EasyLink-compliant devices that are connected through HDMI can be controlled by a single remote control.

Philips does not guarantee 100% interoperability with all HDMI-CEC devices.

What you need

- HDMI-CEC compliant devices.
- An HDMI connection between the connected devices.

Switch on

- 1 On the TV and other connected devices, turn on the HDMI-CEC operations. For details, see the manual of the TV or other devices.
- 2 Press **⬆** (**Home**).
- 3 Select **[Setup]**, and then press **OK**.
- 4 Select **[EasyLink] > [EasyLink]**, and then press **OK**.
- 5 Select **[On]**, and then press **OK**.

Control devices

Control the home theater and the other connected HDMI-CEC compliant devices with a single remote control.

One-touch play

If you enable One-touch play, the TV automatically switches to the correct channel when you play a disc in your home theater.

One-touch standby

When you press and hold **⏻** (**Standby**) on the remote control, the home theater and all the connected HDMI-CEC devices (that support one-touch standby) switch to the standby mode.

If one-touch standby is enabled on your home theater, you can switch to standby with the remote control of the TV or other HDMI-CEC devices.

System Audio Control

When you play a device that has its audio output routed to the home theater, the home theater switches to the corresponding audio source automatically.

To use one-touch audio, turn on System Audio Control and follow the instructions on the TV to map connected devices to the audio input connectors of the home theater.

Audio Input Mapping

When you connect a new device to your home theater, map the device to the audio input connector (see 'Play audio from home theater' on page 35).

Play audio from home theater

Play the audio from a connected device through your home theater.

- 1 Press **⬆️** (Home).
- 2 Select **[Setup]**, and then press **OK**.
- 3 Select **[EasyLink]** > **[System Audio Control]** > **[On]**, and then press **OK**.
 - To play the audio from the TV speakers, select **[Off]**, and skip the following steps.
- 4 Select **[EasyLink]** > **[Audio Input Mapping]**, and then press **OK**.
- 5 Follow the instructions on the TV to map the audio of the connected device to the audio inputs on your home theater.



Note

- If you connect your home theater to the TV through an HDMI ARC connection, make sure that the TV audio is mapped to the ARC input on your home theater.

8 Change settings

This section helps you to change the settings of your home theater.



Caution

- Most of the settings are already configured with the best value for your home theater. Unless you have a reason to change a setting, it is best to leave it at the default value.



Note

- You cannot change a setting that is grayed out.
- To return to the previous menu, press **⬅️** **BACK**. To exit the menu, press **⬆️** (Home).

Picture

Change the picture settings to suit your preferences.



Note

- The best setting is automatically selected for the TV. If you change the setting, make sure that the TV supports the new settings.

Picture settings and format

- 1 Press **⬆️** (Home).
- 2 Select **[Setup]**, and then press **OK**.
- 3 Select **[Video]**, and then press **OK**.
- 4 Change the following settings, and then press **OK**:
 - **[TV Display]**: Picture format.
 - **[Picture Settings]**: Predefined color settings.

Picture color

Deep Color recreates the natural world on your TV screen and displays vivid images in over a billion of colors.

If your TV supports Deep Color and is connected to your home theater through an HDMI cable, you can change the Deep Color.

- 1 Press **▲** (Home).
- 2 Select **[Setup]**, and then press **OK**.
- 3 Select **[Video]** > **[HDMI Deep Color]**, and then press **OK**.
- 4 Select the following options, and then press **OK**:
 - **[Auto]**: Automatically select HDMI Deep Color.
 - **[On]**: View vivid images.
 - **[Off]**: Display standard 24-bit color.

Picture resolution

For HDMI video settings, connect your home theater to the TV through an HDMI cable.

- 1 Press **▲** (Home).
- 2 Select **[Setup]**, and then press **OK**.
- 3 Select **[Video]** > **[HDMI Video]**, and then press **OK**.
- 4 Change the HDMI resolution setting, and then press **OK**.

Blu-ray 3D video

To play 3D video, connect your home theater to a 3D TV through an HDMI cable.

- 1 Press **▲** (Home).
- 2 Select **[Setup]**, and then press **OK**.
- 3 Select **[Video]** > **[Watch 3D video]** > **[Auto]**, and then press **OK**.

Subtitle position

Automatically change the position of the subtitles to fit your TV screen.

- 1 Press **▲** (Home).
- 2 Select **[Setup]**, and then press **OK**.
- 3 Select **[Preference]** > **[Auto Subtitle Shift]** > **[On]**, and then press **OK**.

Sound

Change the sound settings to suit your preference.

HDMI audio

To hear an HDMI audio output from your TV, connect your home theater to the TV through an HDMI cable.

- 1 Press **▲** (Home).
- 2 Select **[Setup]**, and then press **OK**.
- 3 Select **[Audio]** > **[HDMI Audio]**, and then press **OK**.
- 4 Select the following options, and then press **OK**:
 - **[Bitstream]**: Enable bitstream output over HDMI.
 - **[Auto]**: Automatically select the best supported audio format.
 - **[Off]**: Disable audio from the TV.

Audio post processing

To select a predefined sound mode, enable audio post processing at the speaker (see 'Sound mode' on page 21).

- 1 Press **▲** (Home).
- 2 Select **[Setup]**, and then press **OK**.
- 3 Select **[Advanced]** > **[Enhanced Audio]** > **[On]**, and then press **OK**.

Note

- To play the original audio of the disc, select **[Off]**.

Night mode

For quiet listening, decrease the volume of loud sounds when you play discs. Night mode is only available for Dolby-encoded DVD and Blu-ray discs.

- 1 Press **▲** (Home).
- 2 Select **[Setup]**, and then press **OK**.
- 3 Select **[Audio]** > **[Night Mode]** > **[On]**, and then press **OK**.

Restore sound mode settings

Restore the equalizer settings of all the sound modes to the default values.

- 1 Press **▲** (Home).
- 2 Select **[Setup]**, and then press **OK**.
- 3 Select **[Audio]** > **[Default sound settings]**, and then press **OK**.

Language

Select a language for the home menu, audio, and subtitles.

Home menu

- 1 Press **▲** (Home).
- 2 Select **[Setup]**, and then press **OK**.
- 3 Select **[Preference]** > **[Menu language]**, and then press **OK**.
- 4 Select a menu language, and then press **OK**.

Disc audio

- 1 Press **▲** (Home).
- 2 Select **[Setup]**, and then press **OK**.
- 3 Select **[Preference]** > **[Audio]**, and then press **OK**.
- 4 Select an audio language for discs, and then press **OK**.



Note

- If your preferred disc language is not available, select **[Others]** from the list, and enter the 4-digit language code found at the end of this user manual (see 'Language code' on page 47).
- If you select a language that is not available on a disc, the home theater uses the default language of the disc.

Disc subtitle

- 1 Press **▲** (Home).
- 2 Select **[Setup]**, and then press **OK**.
- 3 Select **[Preference]** > **[Subtitle]**, and then press **OK**.
- 4 Select a subtitle language for discs, and then press **OK**.

Disc menu

- 1 Press **▲** (Home).
- 2 Select **[Setup]**, and then press **OK**.
- 3 Select **[Preference]** > **[Disc Menu]**, and then press **OK**.
- 4 Select a menu language for discs, and then press **OK**.



Note

- If your preferred disc language is not available, select **[Others]** from the list, and enter the 4-digit language code found at the end of this user manual (see 'Language code' on page 47).
- If you select a language that is not available on a disc, the home theater uses the default language of the disc.

Parental control

Restrict access to discs that are recorded with ratings.

Password

You can set or change your password to play a restricted disc.

- 1 Press **▲** (Home).
- 2 Select **[Setup]**, and then press **OK**.
- 3 Select **[Preference]** > **[Change Password]**, and then press **OK**.
 - ↳ A change password menu is displayed.
- 4 Follow the instructions on the TV to set or change password.
 - If you do not have a password or you have forgotten, enter **0000**.
- 5 Press **OK**.

Ratings

Some discs are recorded with ratings according to age. You can set up your home theater to play only discs with an age rating lower than your child's age.

- 1 Press **▲** (Home).
 - 2 Select **[Setup]**, and then press **OK**.
 - 3 Select **[Preference]** > **[Parental Control]**, and then press **OK**.
 - ↳ A message prompts you to enter the password.
 - 4 Enter the password with the **Numeric buttons**.
 - 5 Select an age rating, and then press **OK**.
 - To play all discs irrespective of the rating, select level **8** or **[Off]**.
-

Energy saving

Save energy by changing the following settings.

Auto standby

When playing a disc or a USB storage device, automatically switch your home theater to standby if:

- it is in pause or stop mode, and
 - no button is pressed for 30 minutes.
- 1 Press **▲** (Home).
 - 2 Select **[Setup]**, and then press **OK**.
 - 3 Select **[Preference]** > **[Auto Standby]** > **[On]**, and then press **OK**.
-

Sleep timer

Set timers to switch the home theater to standby after a specified time.

- 1 Press **▲** (Home).
- 2 Select **[Setup]**, and then press **OK**.
- 3 Select **[Preference]** > **[Sleep Timer]**, and then press **OK**.
- 4 Select the duration of the sleep timer.
 - ↳ The sleep timer can be set up to 60 minutes. If the sleep timer is set to **[Off]**, it switches off.
- 5 Press **OK** to activate.
 - ↳ The home theater switches to standby after the specified time.

Screen saver

Automatically switch your home theater to screen saver mode if:

- it is in pause or stop mode, and
 - no button is pressed for 10 minutes.
- 1 Press **▲** (Home).
 - 2 Select **[Setup]**, and then press **OK**.
 - 3 Select **[Preference]** > **[Screen Saver]** > **[On]**, and then press **OK**.
-

Display panel

Change the brightness of the home theater display panel.

- 1 Press **▲** (Home).
 - 2 Select **[Setup]**, and then press **OK**.
 - 3 Select **[Preference]** > **[Display Panel]**, and then press **OK**.
 - 4 Select the brightness, and then press **OK**.
-

Apply factory settings

Reset your home theater to the default settings. You cannot reset the parental control settings.

- 1 Press **▲** (Home).
- 2 Select **[Setup]**, and then press **OK**.
- 3 Select **[Advanced]** > **[Restore default settings]**, and then press **OK**.
- 4 Select **[OK]**, and then press **OK**.

9 Update software

To continue to get the best features and support for your home theater, update the software regularly. Compare the version of your current software with the latest version on www.philips.com/support.

Check software version

- 1 Press **▲** (Home).
- 2 Select **[Setup]**, and then press **OK**.
- 3 Select **[Advanced]** > **[Version Info.]**, and then press **OK**.
 - ↳ The software version is displayed.

Update software through the Internet

- 1 Connect your home theater to the network. Use a
 - wired network connection (see 'Set up the wired network' on page 19), or
 - a wireless network connection (see 'Set up the wireless network' on page 19).
- 2 Press **▲** (Home).
- 3 Select **[Setup]**, and then press **OK**.
- 4 Select **[Advanced]** > **[Software Update]** > **[Network]**.
 - ↳ If an upgrade media is detected, you are prompted to start or cancel the update.
- 5 Follow the instruction on the TV to confirm the update.
 - ↳ When the software update is complete, the home theater automatically switches off and restarts. If it does not, disconnect the power cord for a few seconds and then reconnect it.

Note

- If the home theater cannot connect to the Philips server, press **▲** (Home), and then select **[Setup]** > **[Network]** > **[Network Installation]** to set up the network.

Update software through USB

What you need

- A USB flash drive, with at least 75MB of memory. The USB flash drive must be FAT or NTFS formatted. Do not use a USB hard drive.
- A computer with Internet access.
- An archive utility that supports the ZIP file format (for example, WinZip® for Microsoft® Windows® or StuffIt® for Macintosh®).

Step 1: Download the latest software

- 1 Connect a USB flash drive to your computer.
- 2 In your web browser, go to www.philips.com/support.
- 3 At the Philips Support website, find your product and locate the **Software and drivers**.
 - ↳ The software update is available as a zip file.
- 4 Save the zip file in the root directory of your USB flash drive.
- 5 Use the archive utility to extract the software update file in the root directory of the USB flash drive.
 - ↳ The files are extracted under the **UPG_ALL** folder of your USB flash drive.
- 6 Disconnect the USB flash drive from your computer.

Step 2: Update the software

Caution

- Before you connect the USB flash drive to your home theater, make sure that there is no disc in the disc compartment, and the disc compartment is closed.

- 1 Connect the USB flash drive to your home theater.
- 2 Switch your TV to the correct source for your home theater.
- 3 Press **▲** (Home), and then select **[Setup]**.
- 4 Select **[Advanced]** > **[Software Update]** > **[USB]**.
- 5 Follow the instructions on the TV to confirm the update.
 - ↳ When the software update is complete, the home theater automatically switches off and restarts. If it does not, disconnect the power cord for a few seconds, and then reconnect it.

Note

- When the software update is in progress, do not turn off the power or remove the USB flash drive.

10 Product specifications

Note

- Specifications and design are subject to change without notice.

Region codes

The type plate on the back or bottom of the home theater shows which regions it supports.

Country	DVD	BD
Europe, United Kingdom	 	
Asia Pacific, Taiwan, Korea	 	
Latin America	 	
Australia, New Zealand	 	
Russia, India	 	
China	 	

Media formats

- AVCHD, BD, BD-R/ BD-RE, BD-Video, DVD-Video, DVD+R/+RW, DVD-R/-RW, DVD+R/-R DL, CD-R/CD-RW, Audio CD, Video CD/SVCD, Picture files, MP3 media, WMA media, DivX Plus HD media, USB storage device

File formats

- Audio: .aac, .mka, .mp3, .wma, .wav, .mp4, .m4a
- Video:
 - .avi, .divx, .mp4, .mkv, .asf, .wmv, .mpeg, .mpeg,
 - .rmvb, .rm (Available only in Asia Pacific and China)
- Picture: .jpg, .jpeg, .gif, .png

Audio formats

Your home theater supports the following audio files.

Extension	Container	Audio codec	Bit rate
.mp3	MP3	MP3	32 kbps ~ 320 kbps
.wma	ASF	WMA	64 kbps ~ 160 kbps
.aac	AAC	AAC, HE-AAC	192 kbps
.wav	WAV	PCM	1.4 Mbps
.m4a	MKV	AAC	192 kbps
.mka	MKA	PCM	27.648 Mbps
.mka	MKA	Dolby Digital	640 kbps
.mka	MKA	DTS core	1.54 Mbps
.mka	MKA	MPEG	912 kbps
.mka	MKA	MP3	32 kbps ~ 320 kbps
.mka	MKA	WMA	64 kbps ~ 160 kbps
.mka	MKA	AAC, HE-AAC	192 kbps

Video formats

If you have a high definition TV, your home theater allows you to play your video files with:

- Resolution: 1920 × 1080 pixels at
- Frame rate: 6 ~ 30 frames per second.

.avi files in AVI container

Audio codec	Video codec	Bit rate
PCM, Dolby Digital, DTS core, MP3, WMA	DivX 3.11, DivX 4.x, DivX 5.x, DivX 6.x	10 Mbps max
	MPEG 1, MPEG 2	20 Mbps (peak 40 Mbps)
	MPEG 4 ASP	10 Mbps max
	H.264/AVC HP@4.1/4.0; MP@3.2/3.1/3.0	20 Mbps (peak 40 Mbps)
	WMV9	20 Mbps

.divx files in AVI container

Audio codec	Video codec	Bit rate
PCM, Dolby Digital, MP3, WMA	DivX 3.11, DivX 4.x, DivX 5.x, DivX 6.x	10 Mbps max
	MPEG 1, MPEG 2	20 Mbps (peak 40 Mbps)
	MPEG 4 ASP	10 Mbps max

.mp4 or .m4v files in MP4 container

Audio codec	Video codec	Bit rate
Dolby Digital, MPEG, MP3, AAC, HE-AAC	MPEG 1, MPEG 2	20 Mbps (peak 40 Mbps)
	MPEG 4 ASP	10 Mbps max
	H.264/AVC HP@4.1/4.0; MP@3.2/3.1/3.0	20 Mbps (peak 40 Mbps)

.mkv files in MKV container

Audio codec	Video codec	Bit rate
PCM, Dolby Digital, DTS core, MPEG, MP3, WMA, AAC, HE-AAC	MPEG 1, MPEG 2	20 Mbps (peak 40 Mbps)
	MPEG 4 ASP	10 Mbps max
	H.264/AVC HP@4.1/4.0; MP@3.2/3.1/3.0	20 Mbps (peak 40 Mbps)
	WMV9	20 Mbps

.asf and .wmv files in ASF container

Audio codec	Video codec	Bit rate
PCM, Dolby Digital, MP3, WMA	MPEG 4 ASP	10 Mbps max
	H.264/AVC HP@4.1/4.0; MP@3.2/3.1/3.0	20 Mbps (peak 40 Mbps)
	WMV9	20 Mbps

.mpg and .mpeg files in PS container

Audio codec	Video codec	Bit rate
PCM, DTS core, MPEG, MP3	MPEG 1, MPEG 2	20 Mbps (peak 40 Mbps)
	MPEG 1, MPEG 2	20 Mbps (peak 40 Mbps)

.rm and .rmvb files in RM container (Available only in Asia Pacific and China)

Audio codec	Video codec	Bit rate
AAC, COOK	RV30, RV40	20 Mbps (peak 40 Mbps)

Amplifier

- Total output power:
 - Europe and Asia: 1000W RMS (30% THD)
 - Latin America: 800W RMS (+/- 0.5 dB, 10% THD)
- Frequency response: 20 Hz-20 kHz / ± 3 dB
- Signal-to-noise ratio: > 65 dB (CCIR) / (A-weighted)
- Input sensitivity:
 - AUX1, AUX2: 1000 mV
 - Music iLink: 500 mV

Video

- Signal system: PAL / NTSC
- HDMI output: 480i/576i, 480p/576p, 720p, 1080i, 1080p, 1080p24

Audio

- S/PDIF Digital audio input:
 - Coaxial: IEC 60958-3
 - Optical: TOSLINK
- Sampling frequency:
 - MP3: 32 kHz, 44.1 kHz, 48 kHz
 - WMA: 44.1 kHz, 48 kHz
- Constant bit rate:
 - MP3: 32 kbps - 320 kbps
 - WMA: 48 kbps - 192 kbps

Radio

- Tuning range:
 - Europe/China: FM 87.5-108 MHz (50 kHz)
 - Asia Pacific/Russia/Latin America: FM 87.5-108 MHz (50/100 kHz)
- Signal-to-noise ratio: FM 50 dB
- Frequency response: FM 180 Hz-12.5 kHz / ± 3 dB

USB

- Compatibility: Hi-Speed USB (2.0)
- Class support: USB Mass Storage Class (MSC)
- File system: FAT16, FAT32, NTFS
- Maximum memory support: < 160 GB

Main unit

- Power supply:
 - Europe/China: 220-240 V~, 50 Hz
 - Latin America/Asia Pacific: 110-127 V/220-240 V~, 50-60 Hz
 - Russia/India: 220-240 V~, 50 Hz
- Power consumption: 105 W
- Standby power consumption: ≤ 0.5 W
- Dimensions (WxHxD): 435 x 57 x 356.5 mm
- Weight: 3.69 kg

Subwoofer

- Output power:
 - Europe and Asia: 230W RMS (30% THD)
 - Latin America: 184W RMS (+/- 0.5 dB, 10% THD)
- Impedance: 3 ohm
- Speaker drivers:
 - Europe and Asia: 165 mm (6.5") woofer
 - India and Latin America: 203 mm (8") woofer
- Frequency response: 20 Hz-150 Hz
- Dimensions (WxHxD):
 - HTS4561/HTS4562: 123x 309 x 369 mm
 - HTS5561/HTS5562/HTS5581/HTS5582/HTS5591/HTS5592: 196 x 395 x 342 mm
- Weight:
 - HTS4561/HTS4562: 3.6 kg
 - HTS5561/HTS5562/HTS5581/HTS5582/HTS5591/HTS5592: 4.8 kg
- Cable length: 3 m

Speakers

Center speaker:

- Output power:
 - Europe and Asia: 230W RMS (30% THD)
 - Latin America: 184W RMS (+/- 0.5 dB, 10% THD)
- System: full range satellite
- Speaker impedance: 3 ohm
- Speaker drivers:
 - HTS4561/HTS4562: 1 x 76.2 mm (3") full range
 - HTS5561/HTS5562/HTS5581/HTS5582/HTS5591/HTS5592: 2 x 76.2 mm (3") full range
- Frequency response: 150 Hz-20 kHz
- Dimensions (WxHxD):
 - HTS4561/HTS4562 : 161 x 95 x 92 mm
 - HTS5561/HTS5562/HTS5581/HTS5582/HTS5591/HTS5592: 280 x 95 x 92 mm
- Weight:
 - HTS4561/HTS4562: 0.8kg
 - HTS5561/HTS5562/HTS5581/HTS5582/HTS5591/HTS5592: 1.40 kg
- Cable length: 2 m

Front / rear speakers:

- Output power:
 - Europe and Asia: 4 x 135W RMS (30% THD)
 - Latin America: 4 x 108W RMS (+/- 0.5 dB, 10% THD)
- Speaker impedance: 5 ohm
- Speaker drivers:
 - HTS4561/HTS4562: 2 x 76.2 mm (3") full range
 - HTS5561/HTS5562/HTS5581/HTS5582/HTS5591/HTS5592: 2 x 76.2 mm (3") full range
- Frequency response: 150 Hz-20 kHz
- Dimensions (WxHxD):
 - HTS4561/HTS4562: 95 x 161 x 87 mm
 - HTS5561/HTS5562/HTS5581/HTS5582/HTS5591/HTS5592 small speakers: 100 x 280 x 104 mm
 - HTS5561/HTS5562/HTS5581/HTS5582/HTS5591/HTS5592 tall speakers: 260 x 1101 x 260 mm

- Weight:
 - HTS4561/HTS4562: 0.6 kg each
 - HTS5561/HTS5562/HTS5581/HTS5582/HTS5591/HTS5592 small speakers: 0.98-1.07 kg each
 - HTS5561/HTS5562/HTS5581/HTS5582/HTS5591/HTS5592 tall speakers: 3.81-3.89 kg each
- Cable length (front speakers): 4 m
- Cable length (rear speakers): 10 m

Remote control batteries

- 2 x AAA-R03-1.5 V

Laser

- Laser Type (Diode): InGaN/AlGaIn (BD), AlGaInP (DVD/CD)
- Wave length: 405 +7 nm/-7 nm (BD), 655 +10 nm/-10 nm (DVD), 790 +10 nm/-20 nm (CD)
- Output power (Max. ratings): 20 mW (BD), 6 mW (DVD), 7 mW (CD)

11 Troubleshooting



Warning

- Risk of electric shock. Never remove the casing of the product.

To keep the warranty valid, never try to repair the product yourself.

If you have problems using this product, check the following points before you request service. If you still have a problem, register your product and get support at www.philips.com/welcome.

Main unit

The buttons on the home theater do not work.

- Disconnect the home theater from the power supply for a few minutes, then reconnect.

Picture

No picture.

- Make sure that the TV is switched to the correct source for the home theater.

No picture on a TV connected through HDMI.

- Make sure that you use a High Speed HDMI cable to connect the home theater and TV. Some Standard HDMI cables do not display properly for some images, 3D video, or Deep Color.
- Make sure that the HDMI cable is not faulty. If it is faulty, replace it with a new cable.
- Press **⬆️ (Home)** and then **731** on the remote control to restore the default picture resolution.
- Change the HDMI video setting, or wait for 10 seconds for auto recovery (see 'Picture resolution' on page 36).

Disc does not play high-definition video.

- Make sure that the disc contains high-definition video.
- Make sure that the TV supports high-definition video.
- Use an HDMI cable to connect to the TV.

Sound

No sound from home theater speakers.

- Connect the audio cable from your home theater to your TV or other devices. You do not need a separate audio connection when:
 - the home theater and TV are connected through an **HDMI ARC** connection, or
 - a device is connected to the **HDMI IN** connector on your home theater.
- Set up the audio for the connected device (see 'Set up audio for connected devices' on page 18).
- Reset your home theater to its factory settings (see 'Apply factory settings' on page 38), and then switch it off and switch on again.
- On your home theater, press **SOURCE** repeatedly to select the correct audio input.

Distorted sound or echo.

- If you play audio from the TV through the home theater, make sure that the TV is muted.

Audio and video are not synchronized.

- 1) Press **SOUND SETTINGS**. 2) Press the **Navigation buttons** (left/right) to select **AUD SYNC**, and then press **OK**. 3) Press the **Navigation buttons** (up/down) to synchronize the audio with the video.

Play

Cannot play a disc.

- Clean the disc.
- Make sure that the home theater supports the type of disc (see 'Media formats' on page 40).
- Make sure that the home theater supports the region code of the disc (see 'Region codes' on page 40).
- If the disc is a DVD±RW or DVD±R disc, make sure that it is finalized.

Cannot play a DivX file.

- Make sure that the DivX file is encoded according to the 'Home Theater Profile' with the DivX encoder.
- Make sure that the DivX file is complete.

DivX or RMVB/RM subtitles do not display correctly.

- Make sure that the subtitle file name is the same as the movie file name (see 'Subtitles' on page 25).
- Select the correct character set: 1) Press **OPTIONS**. 2) Select **[Character Set]**. 3) Select the supported character set. 4) Press **OK**.

Cannot read the contents of a USB storage device.

- Make sure that the format of the USB storage device is compatible with the home theater.
- Make sure that the file system on the USB storage device is supported by the home theater.

'No entry' or 'x' sign appears on the TV.

- The operation is not possible.

EasyLink does not work.

- Make sure that the home theater is connected to a Philips brand EasyLink TV, and the EasyLink option is on (see 'EasyLink' on page 34).

When you switch on the TV, the home theater automatically switches on.

- This behavior is normal when you are using Philips EasyLink (HDMI-CEC). To make the home theater work independently, switch off EasyLink.

Cannot access BD-Live features.

- Make sure that the home theater is connected to the network. Use a wired network connection (see 'Wired connection' on page 18) or wireless network connection (see 'Wireless connection' on page 19).
- Make sure that the network is set up. Use a wired network installation (see 'Set up the wired network' on page 19) or wireless network installation (see 'Set up the wireless network' on page 19).
- Make sure that the Blu-ray disc supports BD-Live features.
- Clear memory storage (see 'Clear memory' on page 23).

Cannot play video or photos from an iPod or iPhone on the TV.

- Browse and select videos and photos from the iPod or iPhone screen, and play them on your TV.
- Make sure that the iPod or iPhone software has not been tampered with or illegally modified.

Cannot view pictures from an iPod or iPhone on the TV.

- Connect a yellow composite cable to the iPod dock and the TV.
- Switch the TV to the **AV/VIDEO** source (corresponding to the yellow composite cable).
- Press the play button on the iPod or iPhone to start a slideshow.
- Make sure that the iPod or iPhone software has not been tampered with or illegally modified.

Play 3D video in 2D mode.

- Make sure that your home theater is connected to a 3D TV through an HDMI cable.
- Make sure that the disc is a Blu-ray 3D disc, and the Blu-ray 3D video option is on (see 'Blu-ray 3D video' on page 36).

TV screen is black when you play a Blu-ray 3D video or a DivX copy protected video.

- Make sure that the home theater is connected to the TV through an HDMI cable.
- Switch to the correct HDMI source on the TV.

Cannot download video from an online video store.

- Make sure that your home theater is connected to the TV through an HDMI cable.
- Make sure that the SD card is formatted, has enough memory to download the video, and is of type SDHC Class 6.
- Make sure that you have paid for the video, and it is within the rental period.
- Make sure that the network connection is good. Use a wired network connection (see 'Wired connection' on page 18) or a wireless network connection (see 'Wireless connection' on page 19).
- Visit the video store website for more information.

Network

Wireless network distorted or not found.

- Make sure that the wireless network is not disturbed by microwave ovens, DECT phones, or other neighboring Wi-Fi devices.
- If the wireless network does not work properly, try a wired network installation (see 'Set up the wired network' on page 19).

12 Language code

Abkhazian	6566	Inupiaq	7375	Pushto	8083
Afar	6565	Irish	7165	Russian	8285
Afrikaans	6570	Íslenska	7383	Quechua	8185
Amharic	6577	Italiano	7384	Raeto-Romance	8277
Arabic	6582	Ivrit	7269	Romanian	8279
Armenian	7289	Japanese	7465	Rundi	8278
Assamese	6583	Javanese	7486	Samoan	8377
Avestan	6569	Kalaallisut	7576	Sango	8371
Aymara	6589	Kannada	7578	Sanskrit	8365
Azerhijani	6590	Kashmiri	7583	Sardinian	8367
Bahasa Melayu	7783	Kazakh	7575	Serbian	8382
Bashkir	6665	Kernewek	7587	Shona	8378
Belarusian	6669	Khmer	7577	Shqip	8381
Bengali	6678	Kinyarwanda	8287	Sindhi	8368
Bihari	6672	Kirghiz	7589	Sinhalese	8373
Bislama	6673	Komi	7586	Slovensky	8373
Bokmål, Norwegian	7866	Korean	7579	Slovenian	8376
Bosanski	6683	Kuanyama; Kwanyama	7574	Somali	8379
Brezhoneg	6682	Kurdish	7585	Sotho; Southern	8384
Bulgarian	6671	Lao	7679	South Ndebele	7882
Burmese	7789	Latina	7665	Sundanese	8385
Castellano, Español	6983	Latvian	7686	Suomi	7073
Catalán	6765	Letzeburgesch;	7666	Swahili	8387
Chamorro	6772	Limburgan; Limburger	7673	Swati	8383
Chechen	6769	Lingala	7678	Svenska	8386
Chewa; Chichewa; Nyanja	7889	Lithuanian	7684	Tagalog	8476
中文	9072	Luxembourgish;	7666	Tahitian	8489
Chuang; Zhuang	9065	Macedonian	7775	Tajik	8471
Church Slavic; Slavonic	6785	Malagasy	7771	Tamil	8465
Chuvash	6786	Magyar	7285	Tatar	8484
Corsican	6779	Malayalam	7776	Telugu	8469
Česky	6783	Maltese	7784	Thai	8472
Dansk	6865	Manx	7186	Tibetan	6679
Deutsch	6869	Maori	7773	Tigrinya	8473
Dzongkha	6890	Marathi	7782	Tonga (Tonga Islands)	8479
English	6978	Marshallese	7772	Tsonga	8483
Esperanto	6979	Moldavian	7779	Tswana	8478
Estonian	6984	Mongolian	7778	Türkçe	8482
Euskara	6985	Nauru	7865	Turkmen	8475
Ελληνικά	6976	Navaho; Navajo	7886	Twí	8487
Faroese	7079	Ndebele, North	7868	Uighur	8571
Français	7082	Ndebele, South	7882	Ukrainian	8575
Frysk	7089	Ndonga	7871	Urdu	8582
Fijian	7074	Nederlands	7876	Uzbek	8590
Gaelic; Scottish Gaelic	7168	Nepali	7869	Vietnamese	8673
Gallegan	7176	Norsk	7879	Volapuk	8679
Georgian	7565	Northern Sami	8369	Walloon	8765
Gikuyu; Kikuyu	7573	North Ndebele	7868	Welsh	6789
Guarani	7178	Norwegian Nynorsk;	7878	Wolof	8779
Gujarati	7185	Occitan; Provençal	7967	Xhosa	8872
Hausa	7265	Old Bulgarian; Old Slavonic	6785	Yiddish	8973
Herero	7290	Oriya	7982	Yoruba	8979
Hindi	7273	Oromo	7977	Zulu	9085
Hiri Motu	7279	Ossetian; Ossetic	7983		
Hrwatski	6779	Pali	8073		
Ido	7379	Panjabi	8065		
Interlingua (International)	7365	Persian	7065		
Interlingue	7365	Polski	8076		
Inuktitut	7385	Portugués	8084		

13 Index

2

2D video 22

3

3D
3D disc in 2D mode 22
3D safety 9
3D video 21

A

advanced
BD-Live security 24
enhanced audio 36
restore default settings 38
software update 39
software version 39
amplifier 42
audio
formats 41
HDMI audio 36
input mapping 34
language 37
night mode 36
options 25
post processing 36
predefined modes 21
quality 17
settings 36
source 18
speaker setup 14
specifications 42
audio formats 41
audio input mapping 35
audio language 37
audio options 25
auto standby 38

B

bass 21
BD-Live
BD-Live (SD card) 23
BD-Live (USB) 23
clear memory 23
disable 24
troubleshooting 45
Blu-ray 21
Bonus View 22
brightness 38

browse
disc 22
from iPhone 29
from iPod 28
Online TV 32
online video stores 34
USB storage device 24

C

care
environment 9
health 9
product 8
character set 25
close disc compartment 10
computer
DLNA 30
media server software 30
computer network 18
connect
audio (analog cable) 18
audio (coaxial cable - digital) 17
audio (optical cable - digital) 17
audio from TV and other devices 17
computer 30
home network 18
speakers 13
to Internet 18
TV (Composite) 17
TV (HDMI ARC) 16
TV (HDMI) 16
wireless speakers 14
connectors
back connectors - center 15
back connectors - left 14
back connectors - right 15
front connectors 14
control
disc play 22
Easylink (HDMI-CEC) 12
main unit 10
parental control 37
radio 27
USB storage device 24

D

disable
audio post processing 36
BD-Live 24
HDMI-CEC 34
discs
2D video 22

3D disc in 2D mode	22
3D video	21
audio	25
audio language	37
BD-Live	23
Bonus View	22
control buttons	22
DivX	24
eject disc	10
menu language	37
options	25
picture	26
picture-in-picture	22
play	21
subtitle	37
synchronize picture and sound	22
time search	26
titles	26
display panel	10
DivX	
character set	25
subtitles	25
VOD code	25
DLNA	30
dock your iPod or iPhone	28
<hr/>	
E	
EasyLink (HDMI-CEC)	
audio input mapping	35
control buttons	12
one-touch play	34
one-touch standby	34
system audio control	34
eject disc	10
enable	
auto standby	38
auto subtitle shift	36
BD-Live	24
HDMI-CEC	34
predefined sound mode	36
screen saver	38
energy	
auto standby	38
brightness	38
screen saver	38
sleep timer	38
<hr/>	
F	
factory settings	38
FAQs	6
FM antenna	15
format	43
format SD card	33
front connectors	14
<hr/>	
H	
HDMI	
audio	36
Deep color	36
TV (HDMI ARC)	16
video	36
HDMI-CEC	34
help	
navigate	4
read	4
update	5
<hr/>	
I	
Internet	
BD-Live	23
connect to	18
online video stores	34
update home theater software	39
iPod and iPhone	
dock your iPod or iPhone	28
music	28
Philips dock	15
video and slideshow	28
<hr/>	
L	
language	
2nd audio language	22
2nd subtitle language	22
audio	37
disc menu	37
language code	47
onscreen menu	37
subtitle	37
legal notices	6
<hr/>	
M	
Macintosh Twonky Media	32
main unit	
overview	10
specifications	43
troubleshooting	44
manually setup speakers	14
media formats	40
media server software	30
microphone	14
Microsoft Windows Media Player 11	30
Microsoft Windows Media Player 12	31

MP3	
connector	14
play	28
multimedia content	
from disc	21
from online stores	33
from PC	30
from USB storage device	

N

network	
home network	18
name a device	20
settings	18
troubleshooting	46
update home theater software	39
Wi-Fi	19
wired connection	18
wireless connection	19
night mode	36

O

one-touch play	34
one-touch standby	34
Online TV	
access	33
clear browsing history	33
online video stores	34
watch Online TV	33
online video stores	
format SD card	33
rent and play video	34
troubleshooting	45
open disc compartment	10
open source software	6
options	
audio	25
picture	26
video	26
overview	
browse PC	30
connectors	14
HDMI-CEC	34
main unit	10
Online TV	32
online video stores	34
remote control	10
settings	35
speaker setup	14

P

parental control	
password	37
ratings	38
password	37
PC	
DLNA	30
media server software	30
Philips Easylink	34
picture	
options	26
rotate	26
settings	35
slideshows	26
troubleshooting	44
zoom	26
picture options	26
picture-in-picture	
2nd audio language	22
2nd subtitle language	22
play	
discs	21
DivX	24
from PC	32
iPod and iPhone	28
MP3	28
online video	34
radio	42
slideshows	26
troubleshooting	45
USB	24
position	
connectors	14
position	13
subtitle	36
power options	
auto standby	38
brightness	38
screen saver	38
sleep timer	38
preference	
audio	36
auto standby	38
auto subtitle shift	36
change password	37
disc menu	37
display panel	38
menu language	37
parental control	37
screen saver	38
sleep timer	38
subtitle	37
product specifications	40

<hr/>		
R		
radio		
control buttons	27	
FM antenna	15	
listen to radio	27	
specifications	42	
tune stations	27	
tuning grid	27	
ratings	38	
recycling	9	
region codes	40	
remote control		
batteries	44	
overview	10	
virtual	28	
rent video		
format SD card	33	
online video stores	34	
troubleshooting	45	
repeat	25	
RMVB or RM		
character set	25	
subtitles	25	
<hr/>		
S		
safety		
disposal	9	
use of the product	8	
watching 3D	9	
screen saver	38	
SD card	33	
settings		
3D video	36	
audio	36	
auto subtitle shift	36	
default	38	
disc language	37	
HDMI audio	36	
HDMI video	36	
HDMI-CEC	34	
menu language	37	
parental rating		
password	37	
ratings	38	
password	37	
picture	35	
power	38	
ratings	38	
resolution	36	
restore	38	
screen saver	38	
sleep timer	38	
subtitle language	37	
video	35	
setup speakers	14	
manually	14	
sleep timer	38	
slideshows		
animation	26	
duration	26	
musical	27	
picture	26	
smartphone		
browse disc or USB from smartphone	29	
smartphone as remote control	29	
software		
check current version	39	
electronic user manual	5	
update	39	
sound		
bass	21	
equalizer	21	
predefined sound mode	21	
surround sound	21	
synchronize picture and sound	22	
treble	21	
troubleshooting	45	
speaker setup		
predefined modes	21	
settings	36	
speakers		
5.1 speakers	13	
connect	13	
manual setup	14	
position	13	
setup	14	
specifications	43	
surround sound	21	
wireless	14	
specifications	40	
standby	38	
subtitle		
character set	25	
language	37	
position	36	
subwoofer		
specifications	43	
synchronize picture and sound	22	
system audio control	34	

T	
time search	26
titles	26
trademarks	6
treble	21
troubleshooting	
connection	44
main unit	44
network	46
picture	44
play	45
serial number	6
sound	45
tuning grid	27
tutorials	6

U	
update software	
check current version	39
electronic user manual	5
from a USB storage device	39
from network	39
USB storage device	
control buttons	24
options	25
play	24
specifications	43
update home theater software	39
user manual	
download	5
navigate	4
read	4
update	5

V	
video	
HDMI deep color	36
online video	34
picture resolution	36
picture settings	35
synchronize picture and sound	22
video and slideshow	28
VOD code for DivX	25
watch 3D	22
video formats	42
video on demand	
format SD card	33
online video stores	34
video options	26
VOD code for DivX	25

W	
wired network	
settings	19
wired connection	18
wireless network	
settings	20
Wi-Fi	19
Wi-Fi dongle	19
wireless connection	19
wireless speakers	14

Validez de la garantía

Todos los productos de la línea de audio y video Philips, se registrarán por un año de garantía internacional (365 días), salvo para Chile donde los productos de las líneas CD Portable y RCR CD, los cuales se rigen por 6 meses de garantía (182 días)

Condiciones de la garantía

Esta garantía perderá su validez si:

- El defecto es causado por uso incorrecto o en desacuerdo con el manual de instrucciones
- El aparato sea modificado, violado por una persona no autorizada por Philips
- El producto esté funcionando con un suministro de energía (red eléctrica, batería, etc.) de características diferentes a las recomendadas en el manual de instrucciones
- El número de serie que identifica el producto se encuentre de forma adulterada.

Están excluidos de garantía,

- Los defectos que se generen debido al incumplimiento del manual de instrucciones del producto
- Los casos fortuitos o de la fuerza mayor, como aquellos causados por agentes de la naturaleza y accidentes, descargas eléctricas, señales de transmisión débiles.
- Los defectos que se generen debido al uso de los productos en servicios no doméstico/residencial regulares o en desacuerdo con el uso recomendado
- Daños ocasionados por fluctuaciones de voltajes, voltaje fuera de norma o por causas fuera de Philips, como cortocircuitos en los bafles o parlantes.
- En las ciudades en donde no existe el taller autorizado del servicio de Philips, los costos del transporte del aparato y/o el técnico autorizado, corren por cuenta del cliente.
- La garantía no será válida si el producto necesita modificaciones o adaptaciones para que funcione en otro país que no es aquél para el cual fue mercadeado.

El único documento válido para hacer efectiva la garantía de los productos, es la Factura o Boleta de compra del consumidor final.

Aquellos productos que hayan sido adquiridos en otros países y que no estén en el rango normal del país donde se efectuará la reparación, dicha prestación de servicio tomará mas tiempo de lo normal ya que es necesario pedir las partes/piezas al centro de producción correspondiente.

Centros de información

Líneas de atención al consumidor

Bolivia: 800 100 664
<http://www.philips.com/>

Chile: 600 7445477
www.philips.cl

Colombia: 01 800 700 7445
www.philips.com.co

Costa Rica: 0800 507 7445
www.centralamerica.philips.com

Ecuador: 1-800-10-1045
www.centralamerica.philips.com

El Salvador: 800 6024
www.centralamerica.philips.com

Guatemala: 1 800 299 0007
www.centralamerica.philips.com

Honduras
www.centralamerica.philips.com

México: 01 800 504 6200
www.philips.com.mx

Nicaragua
www.centralamerica.philips.com

Panamá: 800 8300
www.centralamerica.philips.com

Perú: 0800-00100
www.philips.com.pe

República Dominicana: 1 800 751 2673
www.centralamerica.philips.com

Venezuela: 0800 100 4888
www.philips.com.ve

LISTA DE SERVIÇO AUTORIZADO - BRASIL

ACRE					
CRUZEIRO DO SUL	68-33222716	ITUMBIAIRA	64-34310837	SAO JOAO DEL REI	32-33718306
RIO BRANCO	68-32217642	LUIZIANIA	61-36228519	SAO SEBASTIAO DO PARAISO	35-35313094
		MINIROS	64-36618259	SETE LAGOAS	31-37718570
ALAGOAS		PIRES DO RIO	64-34611133	TEOFILO OTONI	33-35225831
ARAPIRACA	82-35222367	RIALMA	62-33971320	TIMOTEO	31-38482728
MACEIO	82-32417237	RIO VERDE	64-36132034	TRES CORACOES	35-32324143
PALMEIRA DOS INDIOS	82-34213452	TRINDADE	62-35051505	UBA	32-35323626
UNIAO DOS PALMARES	82-32811305	URUACU	62-33571285	UBERABA	34-33332520
				UBERLANDIA	34-32123636
		MARANHAO		VARGINHA	35-32228414
AMAPA		ACAILANDIA	99-35381889	VARZEA DA PALMA	38-37311548
MACAPA	96-32175934	BACABAL	99-36212794	VICOSA	31-38918000
		CAXIAS	99-35212377		
AMAZONAS		CODO	99-36612942	PARA	
MANAUS	92-36633366	SANTA INES	98-36537553	ALTAMIRA	91-35154349
MANAUS	92-32324252	IMPERATRIZ	99-35232906	ANANINDEUA	91-32354831
		PEDREIRAS	99-36423142	BELEM	91-32421090
BAHIA		PRESIDENTE DUTRA	99-36631815	BELEM	91-32542424
ALAGOINHAS	75-34211128	SAO JOSE DE RIBAMAR	98-32241581	CAPANEMA	91-34621100
BARREIRAS	77-36117592	SAO LUIS	98-32323236	CAPANHAL	91-37215052
CAETITE	77-34541183			MARABA	94-33224207
CAMACARI	71-36218288	MATO GROSSO		PARAGOMINAS	91-30110778
CRUZ DAS ALMAS	75-36212839	BARRA DO GARCAS	66-34011394	PARAUPEBAS	94-33561756
EUNAPOLIS	73-32815181	CUIABA	65-33176464	SANTAREM	93-35235322
FEIRA DE SANTANA	75-32232882	LUCAS DO RIO VERDE	65-35491333	TUCURUI	55-33523215
GUANAMBI	77-34512791	PONTES E LACERDA	65-32682326		
ILHEUS	73-32315995	RONDONOPOLIS	66-34233888	PARAIBA	
IRECE	74-36410202	TANGARA DA SERRA	65-33261431	CAMPINA GRANDE	83-33212128
ITABUNA	73-36137777	VARZEA GRANDE	65-36826502	GUARABIRA	83-32711159
JACOBINA	74-36221323			JOAO PESSOA	83-32469689
JEQUIE	73-35264411	MATO GROSSO DO SUL		NOVA FLORESTA	83-33741014
JUAZEIRO	74-36116456	AMAMBAI	67-34811543	SAPE	83-32832479
LAURO DE FREITAS	71-33784021	CAMPO GRANDE	67-33831540		
MURITIBA	75-34241908	CAMPO GRANDE	67-33213898	PARANA	
PAULO AFONSO	75-32811349	DOURADOS	67-34217117	ARAPONGAS	43-32521606
RIBEIRA DO POMBAL	75-32761853	NOVA ANDRADINA	67-34413851	ASSIS CHATEAUBRIAND	44-35285181
SALVADOR	71-32473659			BANDEIRANTES	43-35421711
SALVADOR	71-32072070	MINAS GERAIS		CAMPO MOURAO	44-30164500
SALVADOR	71-33356233	ANDRADAS	35-37312970	CASCAVEL	45-32254005
SENHOR DO BONFIM	74-35413143	ARAGUARI	34-32416026	CIANORTE	44-36292842
SERRINHA	75-32611794	ARAXA	34-36611132	CURITIBA	41-33334764
SANTO ANTONIO DE JESUS	75-36314470	ARAXA	34-36691869	CURITIBA	41-32648791
TEIXEIRA DE FREITAS	73-30111600	ARCOS	37-33513455	FOZ DO IGUAU	45-35234115
		BAMBUI	37-34311473	FRANCISCO BELTRAO	46-35241501
CEARA		BELO HORIZONTE	31-32254066	IBIPORA	43-32581863
CRATEUS	88-36910019	BETIM	31-35322088	IRATI	42-34221337
FORTALEZA	85-40088555	BOM DESPACHO	37-35222511	LAPA	41-36222410
IGUAU	88-35810512	CARANGOLA	32-37412017	LONDRINA	43-33210077
ITAPIPOCA	88-36312030	CARATINGA	33-33213433	MANDAGUARI	44-32331335
JUAZEIRO DO NORTE	88-35871973	CASSIA	35-35412293	MARECHAL CANDIDO RONDON	45-32542605
SOBRAL	88-36110605	CATAGUASES	32-34227986	MARINGA	44-32264620
TAUA	88-34371987	CONGONHAS	31-37311638	MEDIANEIRA	45-32642580
TIANGUA	88-36713336	CONTAGEM	31-33912994	PARANAVAI	44-34234711
UBAJARA	88-36341233	CORONEL FABRICIANO	31-38411804	PATO BRANCO	46-32242786
		CURVELO	38-37213009	PONTA GROSSA	42-30285061
DISTRITO FEDERAL		DIVINOPOLIS	37-32212353	RIO NEGRO	47-36450251
BRASILIA	61-35564840	FORMIGA	37-33214177	ROLANDIA	43-32561947
BRASILIA	61-33549615	GOVERNADOR VALADARES	33-32716650	SANTO ANTONIO PLATINA	43-35341809
BRASILIA	61-34451991	GUAXUPE	35-35514124	SAO MIGUEL DO IGUAU	45-35651429
		IPATINGA	31-38222332	TOLEDO	45-32522471
ESPIRITO SANTO		ITABIRA	31-38316218	UMUARAMA	44-30561485
ALEGRE	28-35526349	ITAUBA	35-36211315		
ARACRUZ	27-32561251	ITAPECERICA	37-33411326	PERNAMBUCO	
BAIXO GUANDU	27-37321142	ITAUNA	37-32412468	CABO SANTO AGOSTINHO	81-35211823
BARRA DE SAO FRANCISCO	27-37562245	JOAO MONLEVADE	31-38512909	CAMARAGIBE	81-34581246
CACHEIRA DE ITAPEMIRIM	28-35223524	JOAO PINHEIRO	38-35611327	CARUARU	81-37220235
COLATINA	27-37222288	JUIZ DE FORA	32-32151514	GARANHUNS	87-37610085
GUARAPARI	27-33614355	LAGOA DA PRATA	37-32613493	PAULISTA	81-34331142
SAO MATEUS	27-37633806	LAVRAS	35-38210550	RECIFE	81-32313399
SERRA	27-33264292	MANHUAQU	33-33314735	RECIFE	81-34656042
VILA VELHA	27-32891233	MONTE CARMELO	34-38422078	RECIFE	81-32286123
VITORIA	27-32233899	MONTE SANTO DE MINAS	35-35911888	SERRA TALHADA	87-38311401
		MONTES CLAROS	38-32218925		
GOIAS		MURIAE	32-37224334	PIAU	
ANAPOLIS	62-33243562	NANUQUE	33-36212165	PARNAIBA	86-33222877
CALDAS NOVAS	64-34532878	NOVA LIMA	31-35412026	TERESINA	86-32230825
CATALAO	64-34412786	OLIVEIRA	37-33314444	TERESINA	86-32214618
FORMOSA	61-36318166	PARACATU	38-36711250		
GOIANESIA	62-33534967	PASSOS	35-35214342	RIO DE JANEIRO	
GOIANIA	62-32916770	PATOS DE MINAS	34-38222588	BARRA DO PIRAI	24-24437745
GOIANIA	62-32510933	PATROCINIO	34-38311531	BELFORD ROXO	21-27795797
GOIANIA	62-32292908	PIUMHI	37-33714632	BOM JESUS DO ITABAPOANA	22-38312216
GOIATUBA	64-34952401	POCOS DE CALDAS	35-37224448	CABO FRIO	22-26451819
INHUMAS	62-35111431	PONTE NOVA	31-38172486	CAMPOS DOS GOYTACAZES	22-27221499
ITAPURANGA	62-33551484	POUSO ALEGRE	35-34212120	COREIRO	22-25512099

LISTA DE SERVIÇO AUTORIZADO - BRASIL

DUQUE DE CAXIAS	21-27711508	CONCORDIA	49-34423704	SAO CAETANO DO SUL	11-42275339
ITAIGUAI	21-26886491	CRICIUMA	48-21015555	SAO CARLOS	16-33614913
ITAOCARA	22-38612740	CURITIBANOS	49-32410851	SAO JOAO DA BOA VISTA	19-36232990
ITAPERUNA	22-38236825	FLORIANOPOLIS	48-32049700	SAO JOSE DO RIO PARDO	19-36085760
MACAE	22-27591358	GAROPABA	48-32544104	SAO JOSE DO RIO PRETO	17-32325680
MAGE	21-26333342	INDAIAL	47-33333275	SAO JOSE DOS CAMPOS	12-39239508
NITEROI	21-2622-0157	ITAJAI	47-33444477	SAO PAULO	11-29791184
NOVA FRIBURGO	22-25227692	JARAGUA DO SUL	47-33722050	SAO PAULO	11-38659897
PETROPOLIS	24-22454997	JOACABA	49-35220418	SAO PAULO	11-22722245
RESENDE	24-33550101	JOINVILLE	47-34331146	SAO PAULO	11-26940101
RIO DE JANEIRO	21-24264702	LAGES	49-32244414	SAO PAULO	11-32077111
RIO DE JANEIRO	21-25892030	LAGUNA	48-36443153	SAO PAULO	11-39757996
RIO DE JANEIRO	21-25096851	MARAVILHA	49-36640052	SAO PAULO	11-22976464
RIO DE JANEIRO	21-24315759	PINHALZINHO	49-33661014	SAO PAULO	11-56679695
RIO DE JANEIRO	21-25714999	PORTO UNIAO	42-35232839	SAO PAULO	11-38751333
RIO DE JANEIRO	21-3381-0711	RIO DO SUL	47-35211920	SAO PAULO	11-38457575
SAO GONCALO	21-27013214	RIO NEGRINHO	47-36440979	SAO PAULO	11-22966122
TERESOPOLIS	21-27439467	SAO MIGUEL DO OESTE	49-36220026	SAO PAULO	11-20713907
TRES RIOS	24-22521388	TUBARAO	48-36261651	SAO PAULO	11-25770899
VOLTA REDONDA	24-33481601	VIDEIRA	49-35660376	SAO PAULO	11-32222311
		XANXERE	49-34333026	SAO ROQUE	11-47125635
				SAO VICENTE	13-34646559
RIO GRANDE DO NORTE		SÃO PAULO		SOROCABA	15-32241170
CAICO	84-34171844	AGUAS DE LINDOIA	19-38241524	SUZANO	11-47598671
NATAL	84-32231249	AMERICANA	19-34062914	TABOAO DA SERRA	11-47871480
NATAL	84-32132345	AMPARO	19-38072674	TACUARITINGA	16-32524039
PARA DOS FERROS	84-33512334	ARACATUBA	18-36218775	TAUBATE	12-36219080
		ARARAQUARA	16-33368710	TIETE	15-32822452
RIO GRANDE DO SUL		ASSIS	18-33242649	TUPA	14-34962596
BAGE	53-32411295	ATIBAIA	11-44118145	VALINHOS	19-38716629
BENTO GONCALVES	54-34526825	AVARE	14-37322142	VOTUPORANGA	17-34214940
CAMAQUA	51-36711686	BARRETOS	17-33222742		
CANELA	54-32821551	BAURUI	14-31049551	SERGIPE	
CARAZINHO	54-33302292	BIRIGUI	18-36424011	ARACAJU	79-32176080
CAXIAS DO SUL	54-30211808	BOTUCATU	14-38821081	ITABAIANA	79-34313023
DOIS IRMAOS	51-35641286	CAMPINAS	19-37372500	LAGARTO	79-36312656
ERECHIM	54-33211933	CAMPOS DO JORDAO	12-36622142		
ESTANCIA VELHA	51-35612142	CATANDUVA	17-35232524	TOCANTINS	
FARROUPILHA	54-32683603	CERQUILHO	15-32842121	ARAGUAINA	63-34111818
FLORES DA CUNHA	54-32922625	CRUZEIRO	12-31433859	GUARAI	63-34641590
FREDERICO WESTPHALEN	55-37441850	DIADEMA	11-40430669	GURUPI	63-33511038
GRAVATAI	51-30422830	DRACENA	18-38212479	PALMAS	63-32175628
IJUI	55-33327766	FERNANDOPOLIS	17-34423752		
LAJEADO	51-37145155	FRANCA	16-37223898		
MARAU	54-33424571	FRANCO DA ROCHA	11-44492608		
MONTENEGRO	51-36324187	GUARATINGUETA	12-31335030		
NOVA PRATA	54-32421328	GUARUJA	13-33582942		
NOVO HAMBURGO	51-35823191	GUARULHOS	11-24431153		
OSORIO	51-36632524	IBITINGA	16-33417665		
PASSO FUNDO	54-33111104	INDAIATUBA	19-38753831		
PELOTAS	53-32223633	ITAPETININGA	15-32710936		
PORTO ALEGRE	51-32226941	ITAPIRA	19-38633802		
PORTO ALEGRE	51-33256653	ITAPOLIS	16-32622524		
PORTO ALEGRE	51-32268834	ITAQUAQUECETUBA	11-46404162		
RIO GRANDE	53-32323211	ITARARE	15-35322743		
SANTA CRUZ DO SUL	51-37153048	ITU	11-40230188		
SANTA MARIA	55-30282235	ITUVERAVA	16-37293365		
SANTA ROSA	55-35113449	JALES	17-36524479		
SAO JOSE DO OURO	54-33521216	JAU	14-36222117		
SOBRADINHO	51-37421409	JUNDIAI	11-45862182		
TAPERA	54-33851160	LEME	19-35713528		
TAGUARI	51-36534390	LIMEIRA	19-34413179		
TORRES	51-36641940	LINS	14-35227283		
TRES DE MAIO	55-35358727	MARILIA	14-34547437		
URUGUAIANA	55-34118069	MATAO	16-33821046		
VACARIA	54-32311396	MAUA	11-45145233		
VENANCIO AIRES	51-37411443	MOGI DAS CRUZES	11-47941814		
VERA CRUZ	51-37181350	MOGI GUAÇU	19-38181171		
		MOJI MIRIM	19-38624401		
RONDÔNIA		OLIMPIA	17-32805378		
BURITIS	69-32383830	OSASCO	11-36837343		
CACOAL	69-34431415	OURINHOS	14-33225457		
GUAJARA MIRIM	69-35414430	PIRACICABA	19-34340454		
PORTO VELHO	69-32273377	PIRASSUNUNGA	19-35614091		
		PORTO FERREIRA	19-35851891		
RORAIMA		PRESIDENTE PRUDENTE	18-32225168		
BOA VISTA	95-32249605	PROMISSAO	14-35411696		
		REGISTRO	13-38212324		
SANTA CATARINA		RIBEIRAO PRETO	16-36368156		
ARARANGUA	48-35220304	RIBEIRAO PRETO	16-39049908		
BALNEARIO CAMBORIU	47-33630706	RIO CLARO	19-35348543		
BLUMENAU	47-33233907	SALTO	11-40296563		
BRUSQUE	47-33557518	SANTO ANDRE	11-49905288		
CANOINHAS	47-36223615	SANTOS	13-32272947		
CAPINZAL	49-35552266	SAO BERNARDO CAMPO	11-41257000		
CHAPECO	49-33221144				

CERTIFICADO DE GARANTIA NO BRASIL

Este aparelho é garantido pela Philips do Brasil Ltda., por um período superior ao estabelecido por lei. Porém, para que a garantia tenha validade, é imprescindível que, além deste certificado, seja apresentada a nota fiscal de compra do produto.

A Philips do Brasil Ltda. assegura ao proprietário consumidor deste aparelho as seguintes garantias, a partir da data de entrega do produto, conforme expresso na nota fiscal de compra, que passa a fazer parte deste certificado:

Garantia para rádios e reprodutores de CD portáteis (sem caixa acústica destacável): 180 dias

Garantia para os demais produtos da marca Philips: 365 dias.

Esta garantia perderá sua validade se:

- O defeito apresentado for ocasionado pelo uso indevido ou em desacordo com o seu manual de instruções.
- O produto for alterado, violado ou consertado por pessoa não autorizada pela Philips.
- O produto for ligado a fonte de energia (rede elétrica, pilhas, bateria, etc.) de características diferentes das recomendadas no manual de instruções e/ou no produto.
- O número de série que identifica o produto estiver de alguma forma adulterado ou rasurado.

Estão excluídos desta garantia defeitos decorrentes do descumprimento do manual de instruções do produto, de casos fortuitos ou de força maior; bem como aqueles causados por agentes da natureza e acidentes. Excluem-se igualmente desta garantia defeitos decorrentes do uso dos produtos em serviços não doméstico/residencial regular ou em desacordo com o uso recomendado.

ESTÃO EXCLUÍDAS DA GARANTIA ADICIONAL AS PILHAS OU BATERIAS FORNECIDAS JUNTO COM O CONTROLE REMOTO.

Nos municípios onde não exista assistência técnica autorizada Philips, as despesas de transporte do aparelho e/ou técnico autorizado correm por conta do consumidor requerente do serviço.

A garantia não será válida se o produto necessitar de modificações ou adaptações para habilitá-lo a operar em qualquer outro país que não aquele para o qual foi designado, fabricado, aprovado e/ou autorizado, ou ter sofrido qualquer dano decorrente deste tipo de modificação.

Philips do Brasil Ltda.

No Brasil, para informações adicionais sobre o produto, entre em contato com o CIC - Centro de Informações ao Consumidor através dos telefones (11) 2121-0203 (Grande São Paulo) e 0800-701-0203 (demais regiões e estados).

Horário de atendimento: de segunda a sexta-feira, das 8h às 20h e sábados das 8h às 13h.

Visite também nossa página de suporte ao consumidor no website www.philips.com.br/suporte, onde também está disponível a lista completa e atualizada das assistências técnicas autorizadas Philips.

*Para atendimento fora do Brasil, contate a Philips local ou a: Philips Consumer Service
Beukenlaan 2 - 5651 CD Eindhoven The Netherlands*

Certificado de Garantía en Argentina

Artefacto:

**Fabricante/Importador: Philips Argentina S.A.
y/o Fábrica Austral de Productos Eléctricos S.A.**

Dirección: Vedia 3892 - Buenos Aires

Fecha de Venta:

Modelo:

--

Nro. de serie

Firma y sello de la casa vendedora.

PHILIPS ARGENTINA S.A. en adelante denominada “la empresa”, garantiza al comprador de este artefacto por el término de (1) año a partir de la fecha de adquisición, el normal funcionamiento contra cualquier defecto de fabricación y/o vicio de material, y se compromete a reparar el mismo —sin cargo alguno para el adquirente— cuando el mismo fallare en situaciones normales de uso y bajo las condiciones que a continuación se detallan:

1. Este certificado de garantía es válido únicamente en la Republica Argentina. El certificado debe ser completado por la casa vendedora y ser presentado por el usuario conjuntamente con la factura original de compra.
2. Serán causas de anulación de esta garantía en los casos que corresponda:
 - 2.1. Uso impropio o distinto del uso doméstico.
 - 2.2. Exceso o caídas de tensión eléctrica que impliquen uso en condiciones anormales.
 - 2.3. Instalación y/o uso en condiciones distintas a las marcadas en el “Manual de instalación y uso” que se adjunta a esta garantía.
 - 2.4. Cualquier intervención al artefacto por terceros no autorizados por la empresa.
3. La garantía carecerá de validez si se observare lo siguiente:
 - 3.1. Enmiendas o raspaduras en los datos del certificado de garantía o factura.
 - 3.2. Falta de factura original de compra que detalle tipo de artefacto, modelo, número de serie y fecha que coincida con los del encabezamiento del presente certificado.
4. No están cubiertos por esta garantía los siguientes casos:
 - 4.1. Los daños ocasionados al exterior del gabinete.
 - 4.2. Las roturas, golpes, caídas o rayaduras causadas por traslados.
 - 4.3. Los daños o fallas ocasionados por deficiencias, sobretensiones, descargas o interrupciones del circuito de alimentación eléctrica o rayos, deficiencias en la instalación eléctrica del domicilio del usuario o conexión del artefacto a redes que no sean las especificadas en el Manual de Uso del mismo.
 - 4.4. Las fallas, daños, roturas o desgastes producidos por el maltrato o uso indebido del artefacto y/o causadas por inundaciones, incendios, terremotos, tormentas eléctricas, golpes o accidentes de cualquier naturaleza.
 - 4.5. Las fallas o daños ocasionados en desperfectos en la línea telefónica.
 - 4.6. Las fallas producidas por una mala recepción ocasionada en el uso de una antena deficiente o en señales de transmisión débiles.
5. Las condiciones de instalación y uso del artefacto se encuentran detalladas en el Manual de Uso del mismo.
6. La empresa no asume responsabilidad alguna por los daños personales o a la propiedad al usuario o a terceros que pudieran causar la mala instalación o uso indebido del artefacto, incluyendo en este último caso a la falta de mantenimiento.
7. En caso de falla, el usuario deberá requerir la reparación a la empresa a través del Service Oficial y/o Talleres Autorizados más próximos a su domicilio y cuyo listado se acompaña al presente. La empresa a segura al usuario la reparación y/o reposición de piezas para su correcto funcionamiento en un plazo no mayor a 30 días contados a partir de la fecha de solicitud de reparación, salvo caso fortuito o fuerza mayor.

8. Toda intervención del servicio técnico realizada a pedido del usuario dentro del plazo de garantía, que no fuera originada por falla o defecto alguno cubierto por este certificado, deberá ser abonado por el interesado de acuerdo a la tarifa vigente.
9. El presente certificado anula cualquier otra garantía implícita o explícita, por la cual y expresamente no autorizamos a ninguna otra persona, sociedad o asociación a asumir por nuestra cuenta ninguna responsabilidad con respecto a nuestros productos.
10. En caso de que durante el período de vigencia de esta garantía el artefacto deba ser trasladado a las Delegaciones Oficiales y/o Talleres Autorizados de Service para su reparación, el transporte será realizado por la empresa y serán a su cargo los gastos de flete y seguros y cualquier otro que deba realizarse para su ejecución.



PHILIPS

Red de Talleres Autorizados en Argentina

CAPITAL FEDERAL

ATTENDANCE S.A.

- Av. Monroe 3351 (C1430BKA) Cap. Fed.
- Tel.: 4545-5574/0704 ó 6775-1300
- Ventas de Repuestos y Accesorios
- Tel.: 4545-0854

DIG TRONIC

- Av. San Martín 1762 (C1416CRS) Cap. Fed.
- Tel.: 4583-1501

ELECTARG S.R.L.

- Av. Córdoba 1357 (C1055AAD) Cap. Fed.
- Ventas de Repuestos y Accesorios
- Tel.: 4811-1050

Caballito Electarg J. M. Moreno 287 4903-6967/6854/8983

BUENOS AIRES

Azul	Herlein Raúl Horacio	Av. 25 de Mayo 1227	(02281) 428719
Bahía Blanca	Neutron	Soler 535	(0291) 4535329
Bragado	Yacovino Juan J.	San Martín 2141	(02342) 424147
Campana	Electricidad Krautor	Lavalle 415	(03489) 432919
Chivilcoy	Fama	Coronel Suárez 110	(02346) 424129
Junín	Junín Service	Alsina 537	(02362) 442754
La Plata	Da Tos e Hijos	Calle 68 N° 1532	(0221) 4516021
La Plata	Service Técnico La Plata	Av. 51 N° 1051 esq. 16	(0221) 4108155
Mar de Ajó	Tauro Electrónica	Catamarca 14	(02257) 421750
Mar del Plata	Central Service	Olazábal 2249	(0223) 4721639/4729367
Mar del Plata	Service Integral	Diag. Pueyrredón 3229	(0223) 4945633
Necochea	Eléctronica Camejo	Calle 63 N° 1745	(02262) 426134
Pehuajó	Calcagni Carlos Alberto	Zubiría 794	(02396) 472665
Pergamino	ACV Sistemas	Dr. Alem 758	(02477) 421177
Pergamino	El Service	Juan B. Justo 1931	(02477) 418000

San Nicolás	Servític	Bv. Alvarez 148	(03461) 454729/429578
San Pedro	Eléctronica Menisale	Mitre 1695	(03329) 425523
Tandil	Lazzarini Oscar Rafael	Pellegrini 524	(02293) 442167
Trenque Lauquen	Labruno Electrónica	Av. San Martín 426	(02392) 423248
Tres Arroyos	Saini Fabián y Sergio	Av. Belgrano 562	(02983) 427369
Zárate	Eléctronica Spinozzi	Ituzaingó 1030	(03487) 427353

GRAN BUENOS AIRES

Avellaneda	Casa Torres S.A.	Av. Mitre 2559	4255-5854
Florencio Varela	Casa Torres S.A.	San Martín 2574	4255-5854
Gregorio de Laferrere	Eléctronica Alvarez	Honorio Luque 6084	4626-1322
Lomas de Zamora	Attendance S.A. Lomas	Laprida 485	4292-8900
Merlo	Argentronica S.H.	Pte. Cámpora 2175	(0220) 4837177/4829934
Moreno	Argentronica S.H.	Bmé. Mitre 2977 loc.2	(0237) 4639500
Morón	Servotronic	Ultra. Sra. del Buen Viaje 1222	4627-5656
Olivos	Appliance	Av. Libertador 2684	4794-7700
Quilmes	Casa Torres S.A.	E. Ríos esq. Gran Canaria	4255-5854
Ramos Mejía	Electarg S.R.L. Suc.	Belgrano 224	4656-0619
San Miguel	Servotronic San Miguel	Belgrano 999	4664-4131
Villa Ballester	Servotronic	J. Hernández 3101	4767-2515/4768-5249

CATAMARCA

Catamarca	Omicron Central de Serv.	San Martín 225	(03833) 427235
-----------	--------------------------	----------------	----------------

CHACO

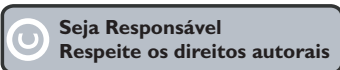
Resistencia	Freschi Jorge Oscar	Av. Avalos 320	(03722) 426030
-------------	---------------------	----------------	----------------

CHUBUT

Comodoro Rivadavia	C.A.S. S.R.L.	Alem 145	(0297) 4442629
Trelew	Fagtron Electrónica	Brasil 253	(02965) 427073

CORDOBA

Córdoba Capital	Servelco S.R.L.	Pje. E. Marsilla 635	(0351) 4724008/4732024
Río Cuarto	Maurutto Víctor G.	Bv. Almaguer 487	(0358) 4660204
Río Cuarto	Capaldi Abel	Paunero 832	(0358) 4623003
Río Tercero	Service Omega	Homero Manzi 149	(03571) 423330
San Francisco	Acuña Walter Electrónica	M. Moreno 360	(03564) 425367
Villa María	Grasso Electrónica	Bv. Alvear 541	(0353) 4521366
Villa María	Vanguard Sist. Electrónicos	México 421	(0353) 4532951



Especificações sujeitas a alteração sem aviso prévio.

Marcas comerciais são propriedade de Koninklijke Philips Electronics N.V. ou de seus respectivos proprietários.

www.philips.com

© 2011 Koninklijke Philips Electronics N.V.

All rights reserved.

sgpam_HTS5561/78_wk 1122_v3