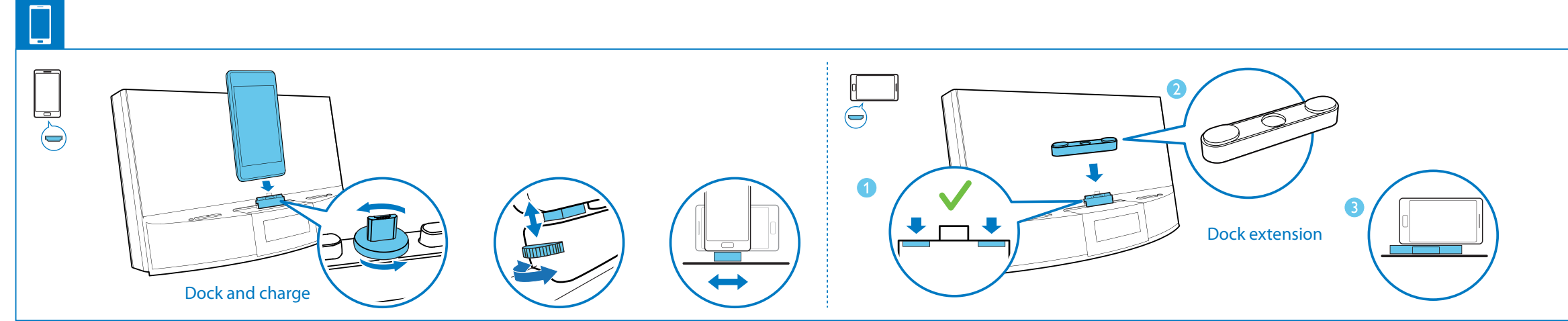
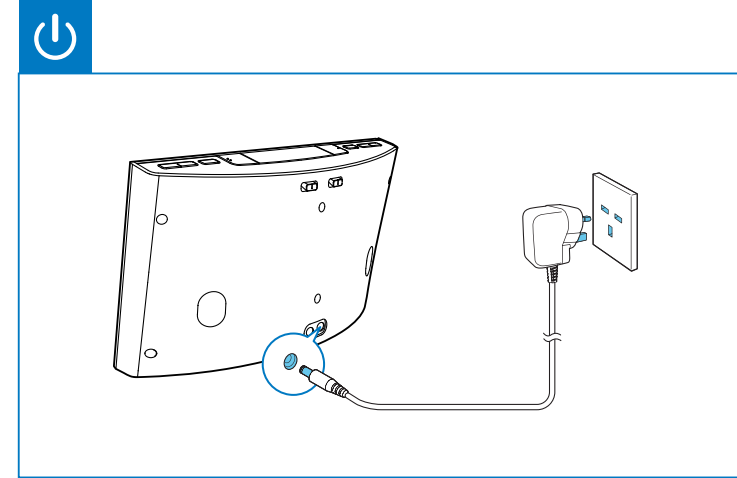
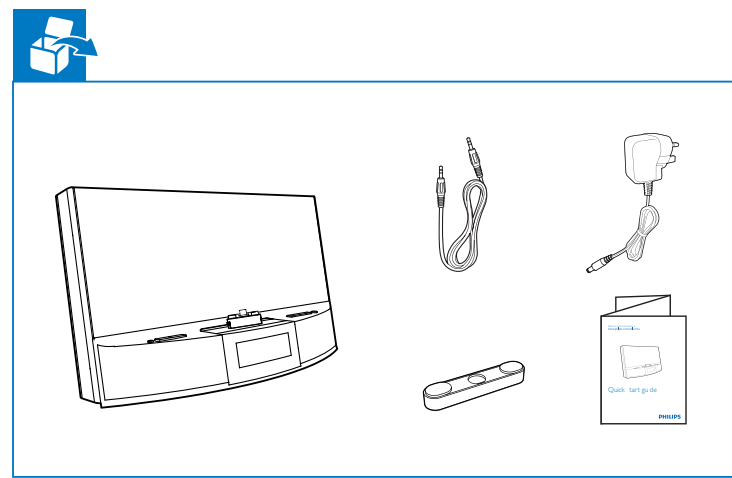


AS141

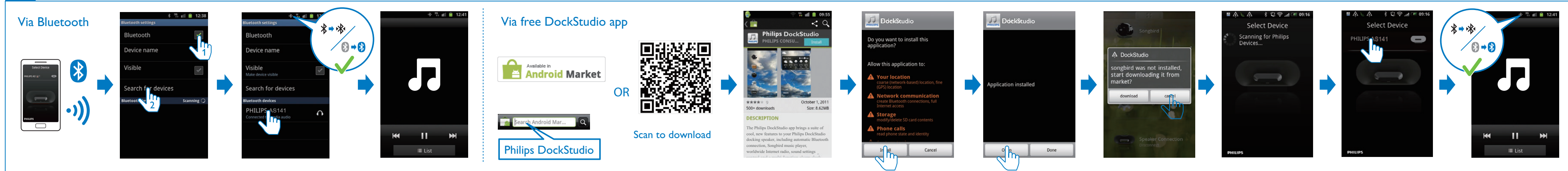


Quick start guide

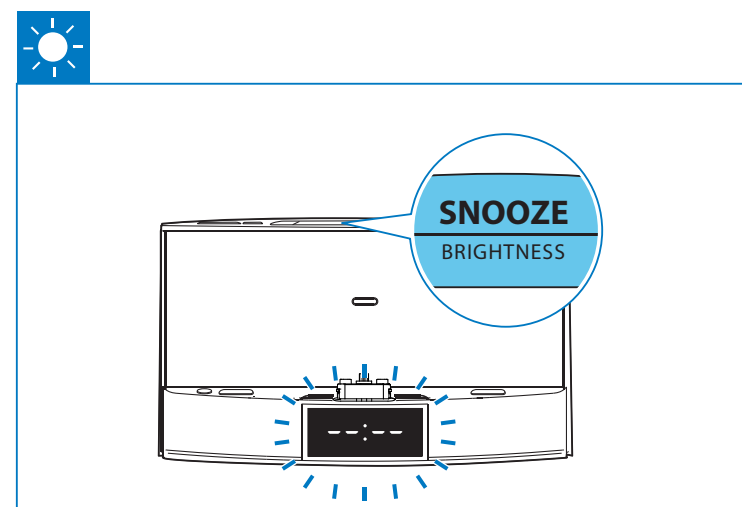
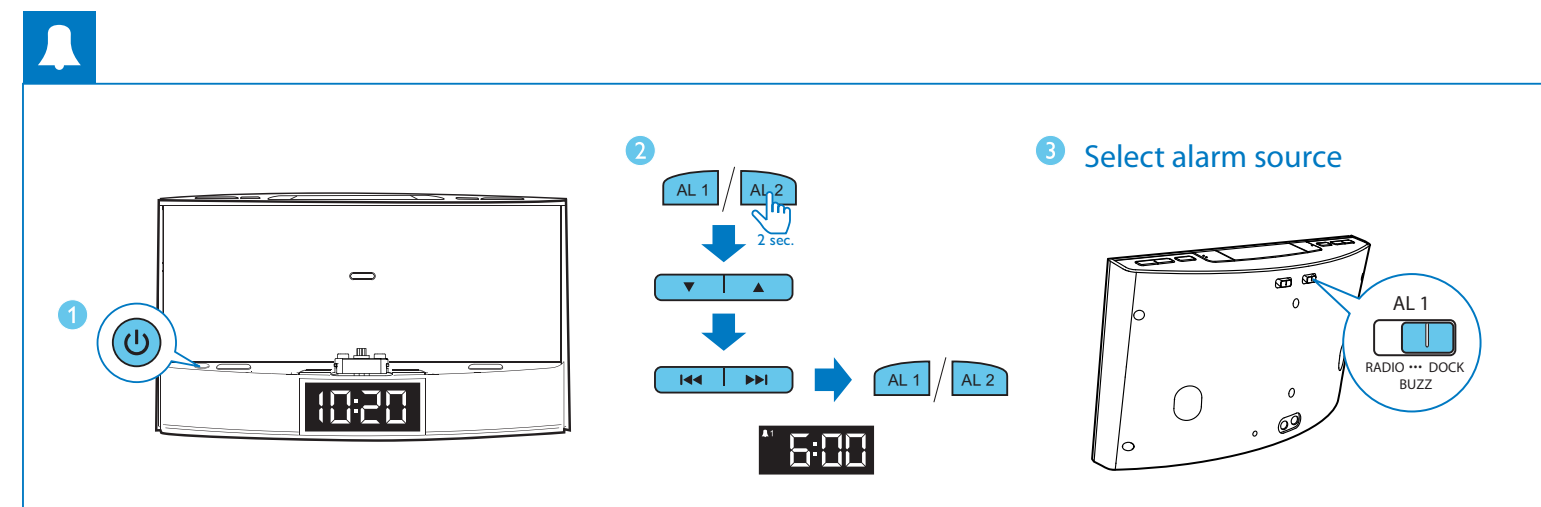
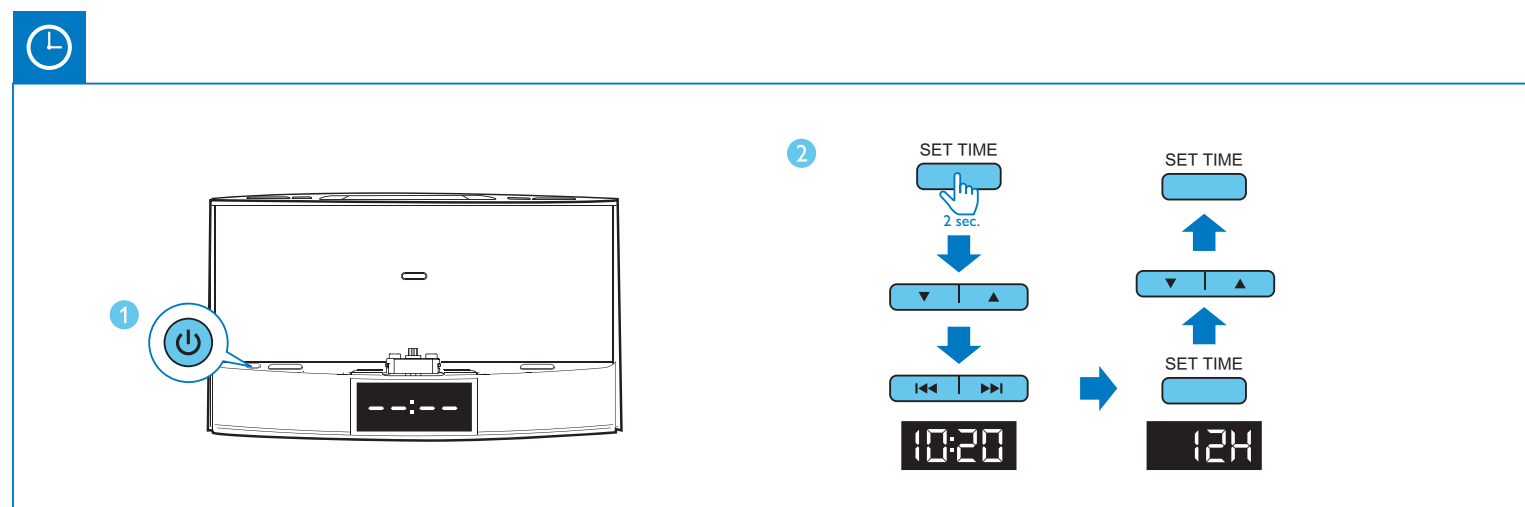
PHILIPS

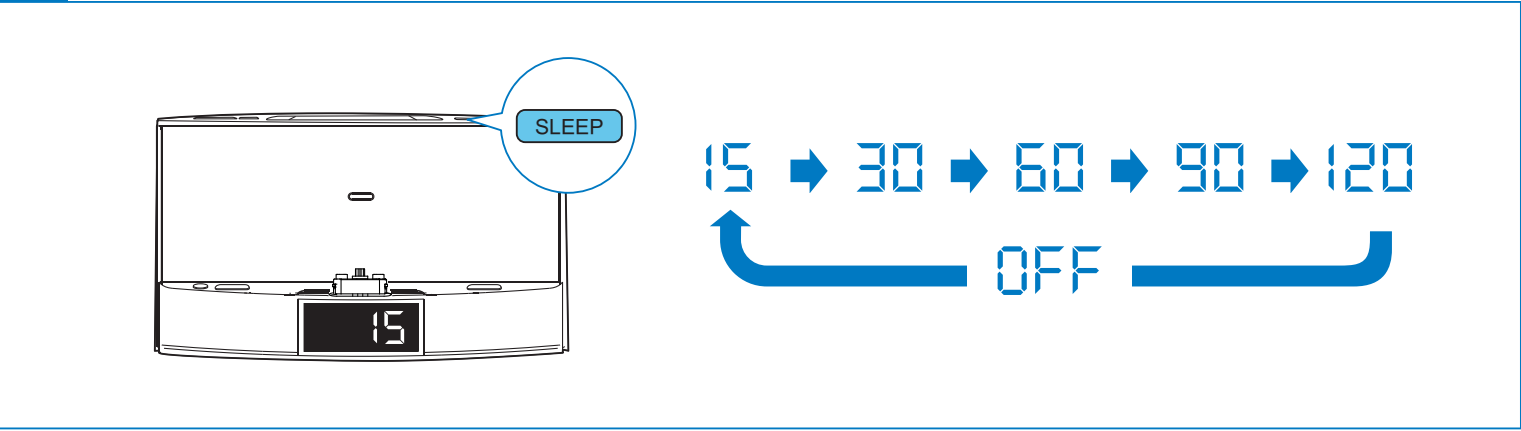


3 Play music

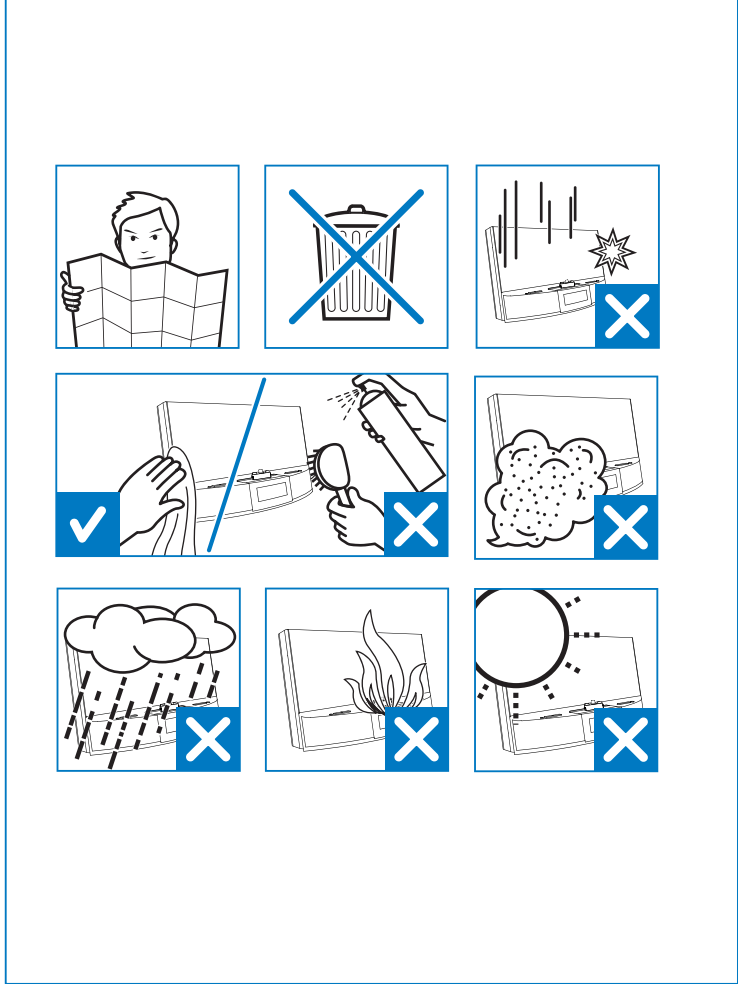
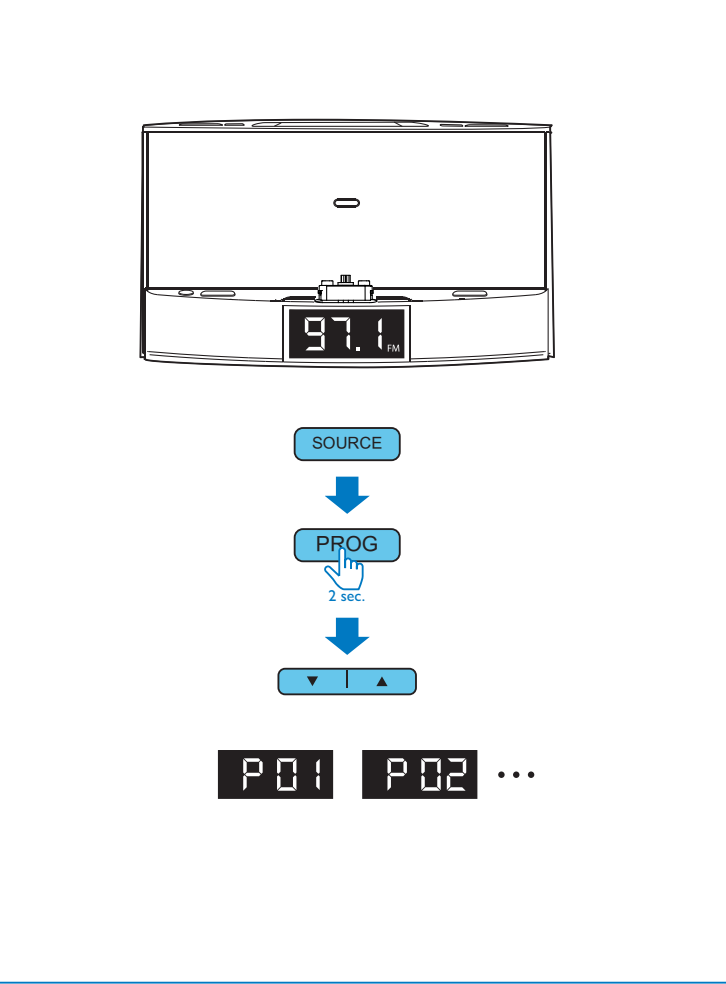
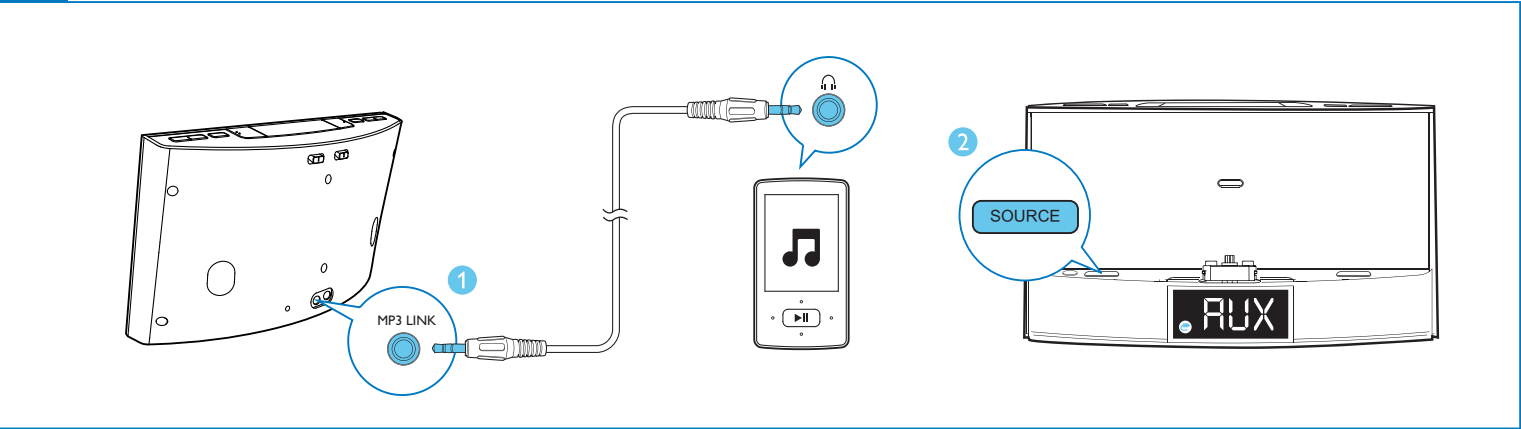


Option Install Songbird





MP3-link

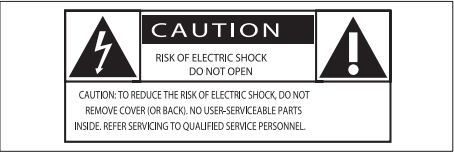


EN

- *1 **System requirements:**
Android system (version 2.1 or above);
Bluetooth 2.1 or above; and
Micro USB connector
Note: If the micro USB connector is located at the top, screen auto-rotation is available for Android 2.3 or above.
Visit www.philips.com/FlexiDock for more details.
- *2 To download and install Songbird on your computer, visit www.philips.com/songbird.
- *3 To get the detailed instructions for use, visit www.philips.com/support.

1 Important

Know these safety symbols



This 'bolt of lightning' indicates uninsulated material within your unit may cause an electrical shock. For the safety of everyone in your household, please do not remove product covering. The 'exclamation point' calls attention to features for which you should read the enclosed literature closely to prevent operating and maintenance problems.
WARNING: To reduce the risk of fire or electric shock, this apparatus should not be exposed to rain or moisture and objects filled with liquids, such as vases, should not be placed on this apparatus.

CAUTION: To prevent electric shock, match wide blade of plug to wide slot, fully insert.

- 1 Read these instructions.
- 2 Keep these instructions.
- 3 Heed all warnings.
- 4 Follow all instructions.
- 5 Do not use this apparatus near water.
- 6 Clean only with dry cloth.
- 7 Do not block any ventilation openings. Install in accordance with the manufacturer's instructions.
- 8 Do not install near any heat sources such as radiators, heat registers, stoves, or other apparatus (including amplifiers) that produce heat.
- 9 Protect the power cord from being walked on or pinched, particularly at plugs, convenience receptacles, and the point where they exit from the apparatus.
- 10 Only use attachments/accessories specified by the manufacturer.
- 11 Unplug this apparatus during lightning storms or when unused for long periods of time.
- 12 Refer all servicing to qualified service personnel. Servicing is required when the apparatus has been damaged in any way, such as power-supply cord or plug is damaged, liquid has been spilled or objects have fallen into the apparatus, the apparatus has been exposed to rain or moisture, does not operate normally, or has been dropped.
- 13 Apparatus shall not be exposed to dripping or splashing.
- 14 Do not place any sources of danger on the apparatus (e.g. liquid filled objects, lighted candles).
- 15 Where the plug of the Direct Plug-in Adapter is used as the disconnect device, the disconnect device shall remain readily operable.

2 Notice

Any changes or modifications made to this device that are not expressly approved by Philips Consumer Lifestyle may void the user's authority to operate the equipment.

This product complies with the radio interference requirements of the European Community.

Your product is designed and manufactured with high quality materials and components, which can be recycled and reused.

When this crossed-out wheeled bin symbol is attached to a product it means that the product is covered by the European Directive 2002/96/EC.
Please inform yourself about the local separate collection system for electrical and electronic products.

Please act according to your local rules and do not dispose of your old products with your normal household waste. Correct disposal of your old product helps to prevent potential negative consequences for the environment and human health.

Environmental information
All unnecessary packaging has been omitted. We have tried to make the packaging easy to separate into three materials: cardboard (box), polystyrene foam (buffer) and polyethylene (bags, protective foam sheet).
Your system consists of materials which can be recycled and reused if disassembled by a specialized company. Please observe the local regulations regarding the disposal of packaging materials, exhausted batteries and old equipment.

3 Get started

Connect power

Caution

- Risk of product damage! Ensure that the power voltage corresponds to the voltage printed on the back or underside of the device.
- Risk of electric shock! When you unplug the power adapter, always pull the plug from the socket. Never pull the cord.

Note

- The type plate is located on the bottom of the docking system.

Connect the power adapter to:

- the DC IN socket of the docking system.
- the wall socket.

Set clock

- 1 In standby mode, press and hold **SET TIME** for two seconds to activate clock setting mode.
→ The hour and minute digits begin to blink.
- 2 Press **▲** / **▼** and **◀◀** / **▶▶** repeatedly to set the hour and minute.
- 3 Press **SET TIME** to confirm.
→ **[12H]** or **[24H]** begins to blink.
- 4 Press **▲** / **▼** to select 12/24 hour format.
- 5 Press **SET TIME** to confirm.
→ The set time is displayed.

Turn on

Press **⏻**.
→ The docking system switches to the last selected source.

Switch to standby mode

Press **⏻** again to switch the docking system to standby mode.
→ **[OFF]** appears for one second, then the clock (if set) is displayed.

Select source

Press **SOURCE** repeatedly to select a source: Bluetooth, FM tuner, or MP3 link.

Note

- When an android phone is docked, the system automatically switches to Bluetooth mode.

4 Listen to FM radio

Tune to FM radio stations

Note

- Position the antenna as far as possible from TV, VCR, or other radiation source.
- For better reception, fully extend and adjust the position of the antenna.

- 1 Press **SOURCE** repeatedly to select FM tuner source.
- 2 Press and hold **◀◀** / **▶▶** for two seconds.
→ The docking system tunes to a station with strong reception automatically.
- 3 Repeat step 2 to tune to more radio stations.

To tune to a station manually:

- 1 Press **◀◀** / **▶▶** repeatedly until you find optimal reception.

Store FM radio stations automatically

Note

- You can store a maximum of 20 FM radio stations.

In tuner mode, press a hold **PROG** for two seconds.

→ The docking system stores all the available FM radio stations and broadcasts the first available station automatically.

Store FM radio stations manually

- 1 Tune to an FM radio station.
- 2 Press **PROG**.
→ The preset number begins to blink.
- 3 Press **▲** / **▼** repeatedly to select a number.
- 4 Press **PROG** again to confirm.
- 5 Repeat steps 1 to 4 to store other stations.

Note

- To remove a pre-stored station, store another station in its place.

Select a preset radio station

In tuner mode, press **▲** / **▼** repeatedly to select a preset number.

5 Other features

Set alarm timer

Set alarm

In standby mode, you can set two alarms to ring at different time.

Note

- Make sure that you have set the clock correctly.

- 1 Press and hold **AL1/AL2** for two seconds to activate alarm setting mode.
→ The hour and minute digits begin to blink.
- 2 Press **▲** / **▼** and **◀◀** / **▶▶** repeatedly to set the hour and minute.
- 3 Press **AL1/AL2** to confirm.

Select alarm source

Note

- For alarm sound, you can select buzzer, your last listened radio channel, or the latest played track in your Android phone.

Adjust **AL1/AL2 RADIO-BUZZ-DOCK** control to select alarm source for both alarms.

Note

- If **DOCK** is selected as alarm source, make sure that you have docked the phone into the docking system.

Activate/deactivate alarm timer

- 1 Press **AL1/AL2** to view alarm settings.
- 2 Press **AL1/AL2** again to activate or deactivate the alarm timer.
→ The alarm icon appears if alarm timer is on and disappears if it is off.
 - To stop the ringing alarm, press the corresponding **AL1/AL2**.
 - The alarm repeats ringing for the next day.

Snooze alarm

When alarm sounds, press **SNOOZE**.

→ The alarm snoozes and repeats ringing nine minutes later.

Set sleep timer

This docking system can switch to standby mode automatically after a preset period.
Press **SLEEP** repeatedly to select the sleep timer period (in minutes).
→ When the sleep timer is activated, **zZ** appears.

To deactivate the sleep timer, press **SLEEP** repeatedly until **[OFF]** (off) appears.

Play audio from an external device

You can listen to audio from an external device through this device.

Philips Consumer Lifestyle
HK-1145-AS141
(Report No. / Numéro du Rapport)

Year 2011
(Year in which the CE mark is affixed / Année au cours de laquelle le marquage CE a été apposé)

PHILIPS

EC DECLARATION OF CONFORMITY
(DECLARATION DE CONFORMITÉ CE)

We / Nous, PHILIPS CONSUMER LIFESTYLE B.V.
(Name / Nom de l'entreprise)
TUSSENDIEPEN 4, 9206 AD DRACHTEN, THE NETHERLANDS
(address / adresse)

Declare under our responsibility that the electrical product(s):
PHILIPS
(Product name / Nom du produit)
Docking System for Android
(product description / description du produit)

SGS Elnko
SGS Elnko
SGS Elnko

AS141/12, /05
(Type version et modèle / référence du modèle)

1999/5/EC (R&TTE Directive)
2004/108/EC (EMC Directive)
2009/125/EC (ErP Directive)
- EC12/15/2008
- EC27/8/2009

And are produced under a quality scheme at least in conformity with ISO 9001 or CENELEC Permanent Documents
(El sont fabriqués conformément à un schéma de qualité au moins conforme à la norme ISO 9001 ou aux Documents Permanents CENELEC)

The Notified Body
(L'Organisme Notifié)
performed
(a été effectué)
(Name and number / nom et numéro)
R&TTE
CS
(description of intervention / description de l'intervention)

Following the provisions of:
(Conformément aux exigences essentielles et autres dispositions pertinentes de):
1999/5/EC (R&TTE Directive)
2004/108/EC (EMC Directive)
2009/125/EC (ErP Directive)
- EC12/15/2008
- EC27/8/2009

And issued the certificate
(et a été certifié)
Remarks:
(Remarques):

SZEMT10700287RF
(certificate number / numéro du certificat)

Drachten, The Netherlands, Nov.11, 2011
(place, date / lieu, date)

A.Speelman, CL Compliance Manager
(signature, name and function / signature, nom et fonction)

Philips Consumer Lifestyle

AMB 544-9056