



© 2010 Koninklijke Philips Electronics N.V.

All rights reserved.

PT9000_12_UM_V2.0



Register your product and get support at
www.philips.com/welcome

PT9000



EN User manual

FR Mode d'emploi

DA Brugervejledning

IT Manuale utente

DE Benutzerhandbuch

NL Gebruiksaanwijzing

ES Manual del usuario

SV Användarhandbok

PHILIPS

Contents

1	Important	5
	Important Safety Instructions	5
	Notice	8

2	Your portable TV	10
	Introduction	10
	What's in the box	10
	Overview of the main unit	11
	Overview of the remote control	13

3	Connect	16
	Connect TV antenna	16
	Connect power	16
	Connect a USB device	17
	Connect an SD card	17
	Connect an external device	18

4	Get started	19
	Charge the built-in battery	19
	Install remote control battery	20
	Install the stand	21
	Use the Home menu	21
	Set time and date	22
	First time settings	22
	Manual search	23

5	Watch TV	25
	Turn on	25
	Switch channels	25
	Adjust volume level	25
	View program information (DTV)	25
	Use the electronic program guide (DTV)	26
	Manage channels (DTV)	26
	Play options	27

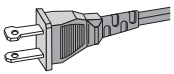
6	Use more of your player	28
	Play music	28
	Play photos	28
	Play DivX video	29
	Display a theme clock	30
	Use the counter	30
	Set the alarm timer	30
	Watch connected devices	31
7	Adjust settings	32
8	Mount the set	34
	Test TV reception quality	34
	Preparation	34
	Mounting the set	35
9	Product information	37
	Product information	37
	USB playability information	37
10	Troubleshooting	39

1 Important

Important Safety Instructions

- ① Read these instructions.
- ② Keep these instructions.
- ③ Heed all warnings.
- ④ Follow all instructions.
- ⑤ Do not use this apparatus near water.
- ⑥ Clean only with dry cloth.
- ⑦ Do not block any ventilation openings. Install in accordance with the manufacturer's instructions.
- ⑧ Do not install near any heat sources such as radiators, heat registers, stoves, or other apparatus (including amplifiers) that produce heat.
- ⑨ For countries with a polarized mains, do not defeat the safety purpose of the polarized or grounding-type plug. A polarized plug has two blades with one wider than the other. A grounding type plug has two blades and a third grounding prong. The wide blade or the third prong are provided for your safety. If the provided plug does not fit into your outlet, consult an electrician for replacement of the obsolete outlet.

Caution: To prevent electric shock, match the wide blade of the plug to the wide slot, fully insert.



- ⑩ Protect the power cord from being walked on or pinched, particularly at plugs, convenience receptacles, and the point where they exit from the apparatus.
- ⑪ Only use attachments/accessories specified by the manufacturer.
- ⑫ Use only with the cart, stand, tripod, bracket, or table specified by the manufacturer or sold with the apparatus. When a cart is used, use caution when moving the cart/apparatus combination to avoid injury from tip-over.



- ⑬ Unplug this apparatus during lightning storms or when unused for long periods of time.
- ⑭ Refer all servicing to qualified service personnel. Servicing is required when the apparatus has been damaged in any way, such as power-supply cord or plug is damaged, liquid has been spilled or objects have fallen into the apparatus, the apparatus has been exposed to rain or moisture, does not operate normally, or has been dropped.
- ⑮ Batteries (battery pack or batteries installed) shall not be exposed to excessive heat such as sunshine, fire or the like.
- ⑯ Apparatus shall not be exposed to dripping or splashing.
- ⑰ Do not place any sources of danger on the apparatus (e.g. liquid filled objects, lighted candles).
- ⑱ Where the MAINS plug or an appliance coupler is used as the disconnect device, the disconnect device shall remain readily operable.



Warning

- Never remove the casing of this apparatus.
- Never lubricate any part of this apparatus.
- Never place this apparatus on other electrical equipment.
- Keep this apparatus away from direct sunlight, naked flames or heat.
- Never look into the laser beam inside this apparatus.
- Ensure that you always have easy access to the power cord, plug or adaptor to disconnect this apparatus from the power.

Hearing safety

Listen at a moderate volume.

- Using headphones at a high volume can impair your hearing. This product can produce sounds in decibel ranges that may cause hearing loss for a normal person, even for exposure less than a minute. The higher decibel ranges are offered for those that may have already experienced some hearing loss.
- Sound can be deceiving. Over time your hearing 'comfort level' adapts to higher volumes of sound. So after prolonged listening, what sounds 'normal' can actually be loud and harmful to your hearing. To guard against this, set your volume to a safe level before your hearing adapts and leave it there.

To establish a safe volume level:

- Set your volume control at a low setting.
- Slowly increase the sound until you can hear it comfortably and clearly, without distortion.

Listen for reasonable periods of time:

- Prolonged exposure to sound, even at normally 'safe' levels, can also cause hearing loss.
- Be sure to use your equipment reasonably and take appropriate breaks.

Be sure to observe the following guidelines when using your headphones.

- Listen at reasonable volumes for reasonable periods of time.
- Be careful not to adjust the volume as your hearing adapts.
- Do not turn up the volume so high that you can't hear what's around you.
- You should use caution or temporarily discontinue use in potentially hazardous situations. Do not use headphones while operating a motorized vehicle, cycling, skateboarding, etc.; it may create a traffic hazard and is illegal in many areas.

Notice

Any changes or modifications made to this device that are not expressly approved by Philips Consumer Lifestyle may void the user's authority to operate the equipment.



This product complies with the radio interference requirements of the European Community.

Environmental information

All unnecessary packaging has been omitted. We have tried to make the packaging easy to separate into three materials: cardboard (box), polystyrene foam (buffer) and polyethylene (bags, protective foam sheet.) Your system consists of materials which can be recycled and reused if disassembled by a specialized company. Please observe the local regulations regarding the disposal of packaging materials, exhausted batteries and old equipment.

Norge

Typeskilt finnes på apparatens underside.

Observer: Nettbryteren er sekundært innkoplet. Den innebygde nettdelen er derfor ikke frakoplet nettet så lenge apparatet er tilsluttet nettkontakten.

For å redusere faren for brann eller elektrisk støt, skal apparatet ikke utsettes for regn eller fuktighet.

Recycling



Your product is designed and manufactured with high quality materials and components, which can be recycled and reused.

When you see the crossed-out wheel bin symbol attached to a product, it means the product is covered by the European Directive 2002/96/EC:



Never dispose of your product with other household waste. Please inform yourself about the local rules on the separate collection of electrical and electronic products. The correct disposal of your old product helps prevent potentially negative consequences on the environment and human health.

Your product contains batteries covered by the European Directive 2006/66/EC, which cannot be disposed of with normal household waste. Please inform yourself about the local rules on separate collection of batteries. The correct disposal of batteries helps prevent potentially negative consequences on the environment and human health. Always bring your product to a professional to remove the built-in battery.



The making of unauthorized copies of copy-protected material, including computer programs, files, broadcasts and sound recordings, may be an infringement of copyrights and constitute a criminal offence. This equipment should not be used for such purposes.

Recording and playback of material might require consent. See Copyright Act 1956 and The Performer's Protection Acts 1958 to 1972.



ABOUT DIVX VIDEO: DivX® is a digital video format created by DivX, Inc. This is an official DivX Certified device that plays DivX video. Visit www.divx.com for more information and software tools to convert your files into DivX video.

ABOUT DIVX VIDEO-ON-DEMAND: This DivX Certified® device must be registered in order to play DivX Video-on-Demand (VOD) content. To generate the registration code, locate the DivX VOD section in the device setup menu. Go to vod.divx.com with this code to complete the registration process and learn more about DivX VOD.

DivX®, DivX Certified® and associated logos are registered trademarks of DivX, Inc. and are used under license.

2 Your portable TV

Congratulations on your purchase, and welcome to Philips! To fully benefit from the support that Philips offers, register your product at www.philips.com/welcome.

Introduction

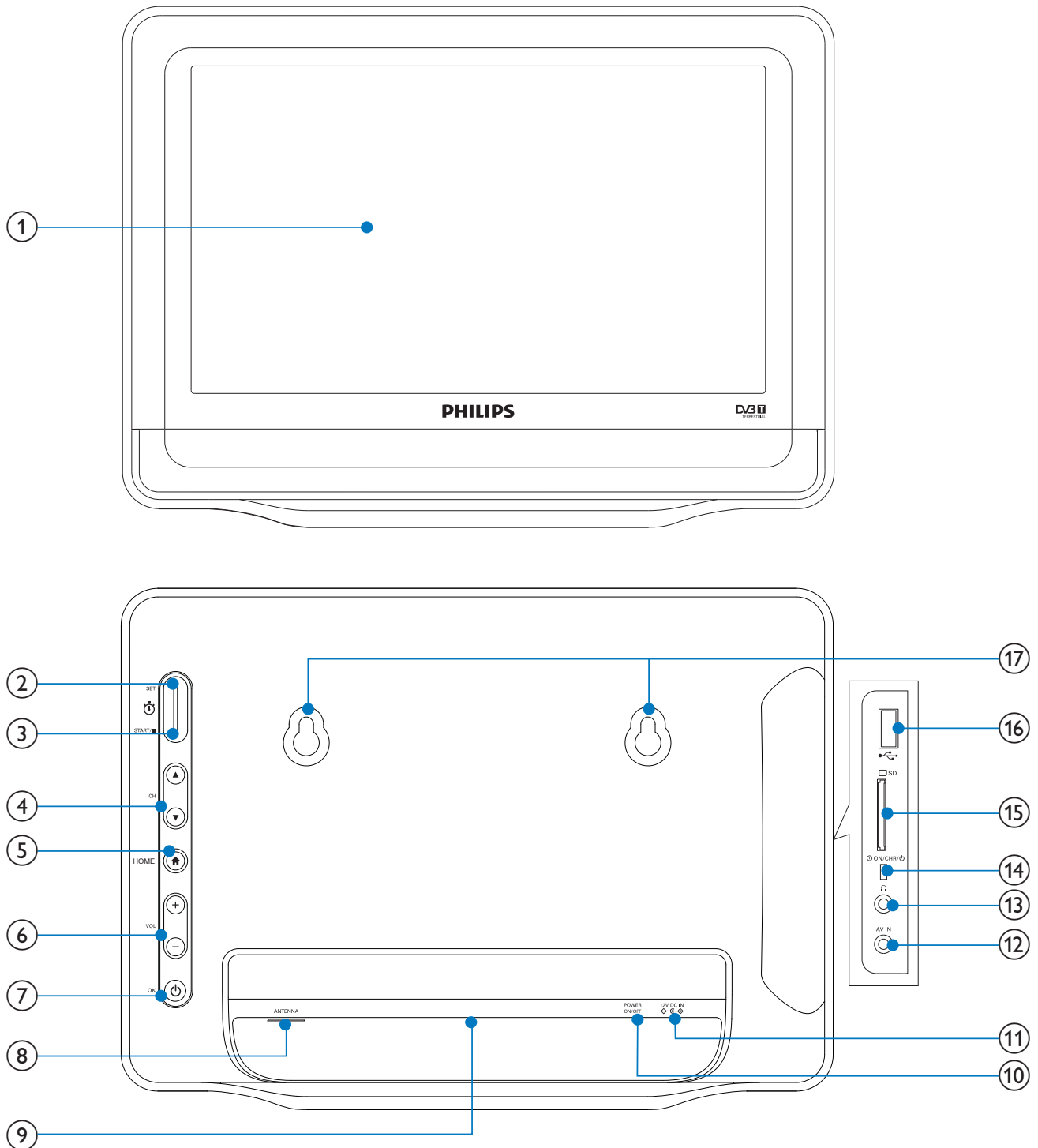
With the portable TV, you can enjoy digital television with extra program content.

What's in the box

Check and identify the contents of your package:

- 1 x Portable TV
- 1 x Remote control
- 1 x AC power adapter, SP-01A1201000-V
- 1 x AV cable
- 1 x Antenna
- 1 x Antenna converter
- 1 x Base stand
- 1 x Mounting arm
- 4 x Mounting screws
- 1 x User manual
- 1 x Quick start guide

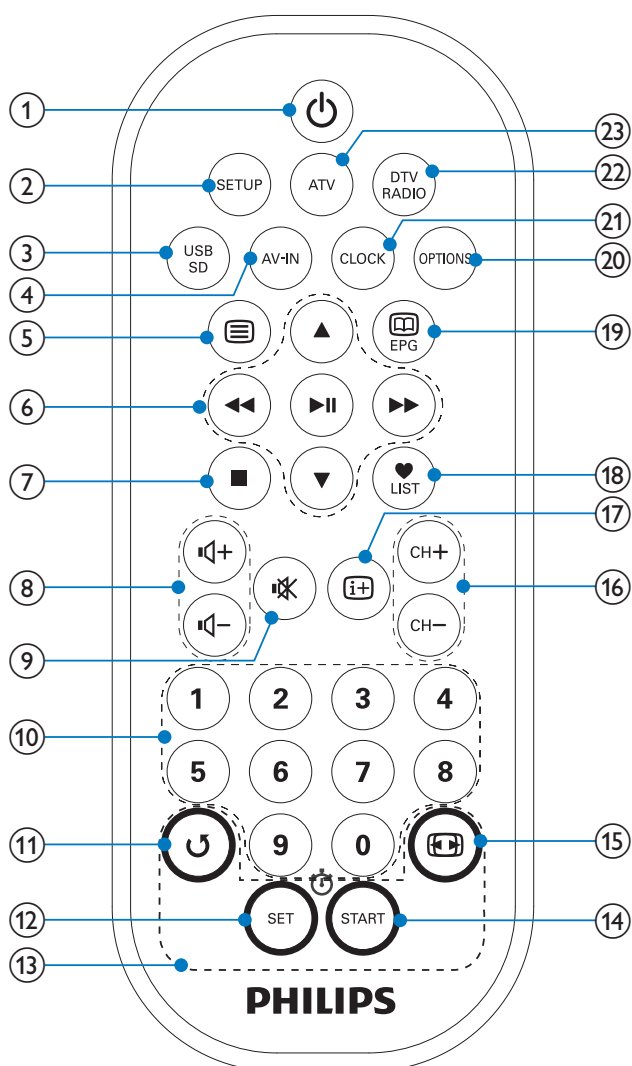
Overview of the main unit



- ① Display panel
- ② SET
 - Sets a counter.
- ③ START
 - Starts/stops a counter.

- ④ **CH▲/▼**
 - Switches to the next or previous channel.
 - Navigates menus.
- ⑤ **HOME**
 - Selects the home menu.
- ⑥ **VOL+/-**
 - Increases or decreases volume.
- ⑦ **⏻/OK**
 - Confirms an entry or selection.
 - Switches to standby or switches on from standby.
- ⑧ **ANTENNA**
 - Antenna jack.
- ⑨ **Stand slot**
- ⑩ **POWERON/OFF**
 - Turns on/off the unit.
- ⑪ **12V DC IN**
 - Power supply socket.
- ⑫ **AV IN**
 - Audio/video input jack.
- ⑬ **🎧**
 - Headphone jack.
- ⑭ **ON/CHR**
 - Charging indicator.
- ⑮ **SD card slot**
- ⑯ **🔌**
 - Jack for a USB mass storage device.
- ⑰ **Mounting hole**

Overview of the remote control



- ①
 - Switches to standby or switches on from standby.
- ② **SETUP**
 - Selects or exits the setup menu.
- ③ **USB/SD**
 - Selects a USB/SD source.
- ④ **AV-IN**
 - Selects an AV input source.
- ⑤
 - Toggles teletext on or off.

- ⑥ ▲, ▼, ◀, ▶
- Navigates menus.
- ◀, ▶
- Searches backward/forward at different speeds.
 - Skips to the previous or next title, chapter, or track.
- ▶||
- Confirms an entry or selection.
 - Accesses or exits the channel list.
 - Starts or pauses play.
- ⑦ ■
- Stop.
- ⑧ 🔊/🔊-
- Increases or decreases volume.
- ⑨ 🔇
- Mutes or unmutes volume.
- ⑩ 0-9
- Numeric keypad
- ⑪ ↻
- Rotates an image.
- ⑫ SET
- Sets a counter.
- ⑬ **Color keys**
- Selects tasks or options.
 - Switches Teletext pages.
- ⑭ **START**
- Starts/stops a counter.
- ⑮ 📺
- Switches the aspect ratio.
- ⑯ **CH+, CH-**
- Switches to the next or previous channel.
- ⑰ ⓘ
- Displays program information, if available.
- ⑱ **LIST**
- Accesses or exits the favorite list.

- ①9 **EPG**
 - Toggles the Electronic Program Guide (EPG) on or off. Enabled on digital channels only.
- ②0 **OPTIONS**
 - Accesses options relating to the current activity or selection.
- ②1 **CLOCK**
 - Selects the clock mode.
- ②2 **DTV/RADIO**
 - Selects the digital TV/Radio mode.
- ②3 **ATV**
 - Selects the analog TV mode.

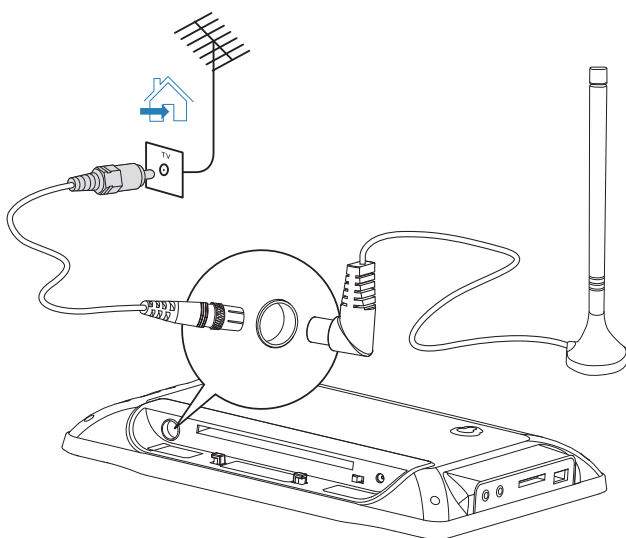
3 Connect

Make the following connections to use this product.

Connect TV antenna

You can connect the unit to the supplied antenna or home antenna (not supplied) to receive TV program.

- 1 Connect the supplied antenna to the antenna jack.

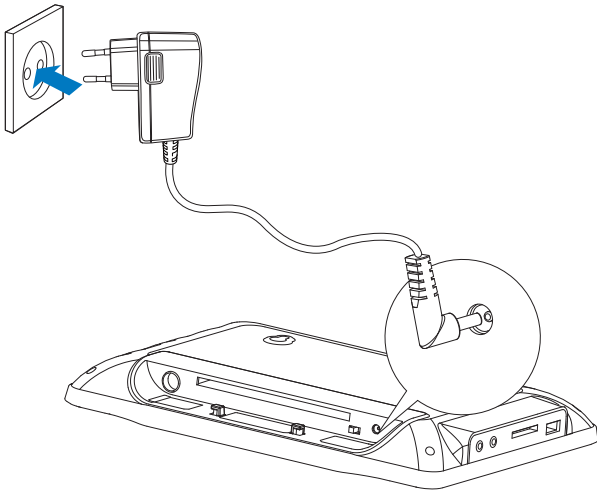


Tip

- For better reception, connect the set to home antenna.

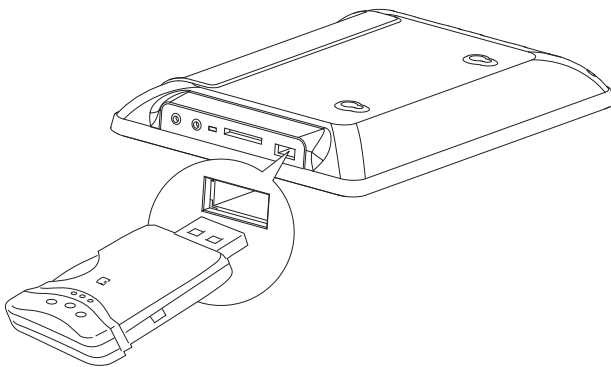
Connect power

- 1 Connect the supplied AC adaptor to the set and to the AC outlet.



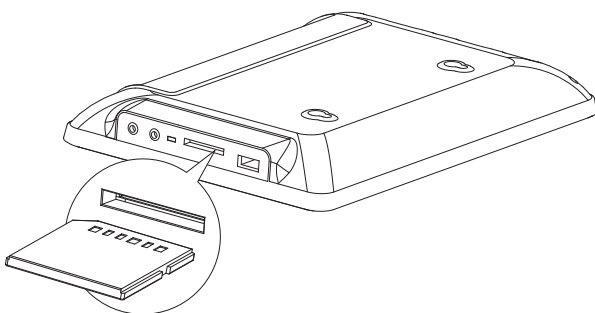
Connect a USB device

- 1 Connect a USB storage device to  socket.



Connect an SD card

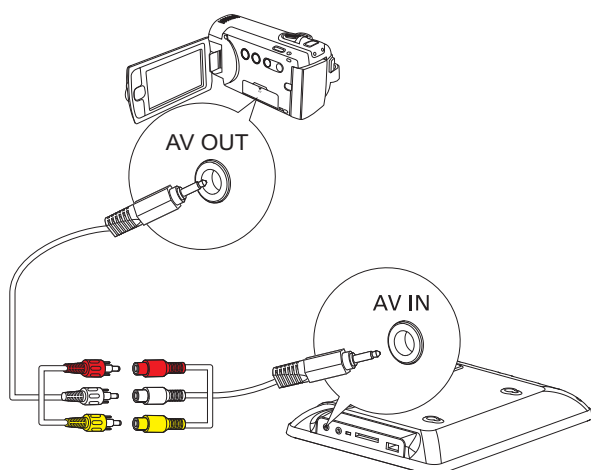
- 1 Connect an SD card to the SD card slot.



Connect an external device

You can connect an external device to watch contents on the set.

- 1 Connect an external device to the set with AV cables.
 - Match the color of the AV cables (not supplied) with the jacks: the yellow cable is for the yellow video jack, the red/white cable is for the red/white audio jacks.



4 Get started



Caution

- Use of controls or adjustments or performance of procedures other than herein may result in hazardous radiation exposure or other unsafe operation.

Always follow the instructions in this chapter in sequence.

If you contact Philips, you will be asked for the model and serial number of this product. The model number and serial number are on the bottom of this product. Write the numbers here:

Model No. _____

Serial No. _____

Charge the built-in battery



Caution

- Risk of product damage! Make sure that the power supply voltage corresponds to the voltage printed on the base of the set.
- Use only the supplied AC adaptor to charge the battery.
- Danger of explosion if battery is incorrectly replaced. Replace only with the same or equivalent type.



Note

- The type plate is located under the stand of the set.


Fast charge mode

To charge the set when it is powered off:

- 1 Slide the **POWERON/OFF** switch to the **OFF** position.
↳ The set is powered off.
- 2 Connect the supplied AC adaptor to the set and to the AC outlet.

- ↳ The charge indicator turns to orange. It takes less than four hours to fully charge the built-in battery.
- ↳ When the built-in battery is fully charged, the charge indicator turns off.

To charge the set when it is switched to standby:

- 1 Slide the **POWERON/OFF** switch to the **ON** position.
 - ↳ The set is powered on.
- 2 Press  to switch the set to standby.
- 3 Connect the supplied AC adaptor to the set and to the AC outlet.
 - ↳ The charge indicator turns to orange. It takes less than four hours to fully charge the built-in battery.
 - ↳ When the built-in battery is fully charged, the charge indicator turns to red.

Slow charge mode

To charge the set when it is powered on:

- 1 Slide the **POWERON/OFF** switch to the **ON** position.
 - ↳ The set is powered on.
- 2 Connect the supplied AC adaptor to the set and to the AC outlet.
 - ↳ The charge indicator turns to orange. It takes less than 15 hours to fully charge the built-in battery.
 - ↳ When the built-in battery is fully charged, the charge indicator turns to green.

Install remote control battery



Caution

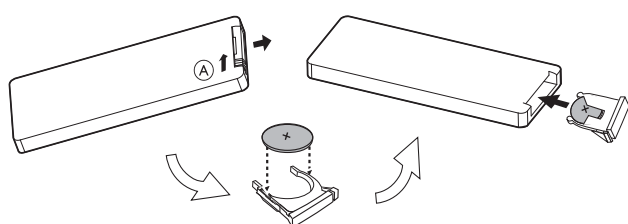
- Danger of explosion if battery is incorrectly replaced. Replace only with the same or equivalent type.
- Risk of explosion! Keep batteries away from heat, sunshine or fire. Never discard batteries in fire.
- Risk of decreased battery life! Never mix different brands or types of batteries.
- Risk of product damage! When the remote control is not used for long periods, remove the batteries.



Note

- Batteries contain chemical substances, they should be disposed of properly.
- Perchlorate Material - special handling may apply. See www.dtsc.ca.gov/hazardouswaste/perchlorate.

- 1 Open the battery compartment.
- 2 Insert one CR2025 battery with correct polarity (+/-) as indicated.
- 3 Close the battery compartment.

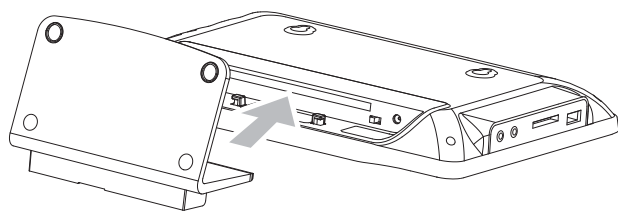


Install the stand

You can use the stand to place the TV set on a flat surface.

To install the stand:

- 1 Align the stand with the slot at the bottom of the set.
- 2 Fit the stand into the slot until it locks into place.



Use the Home menu

- 1 Press **HOME** to display the home menu.
 - To watch DTTV programs or listen to DTTV radio, select **[TV-Digital]**.
 - To watch analog TV programs, select **[TV-Analog]**.
 - To browse and play files in a memory card, select **[SD card]**.

- To browse and play files in a USB storage device, select **[USB]**.
- To watch a connected device, select **[AV-in]**.
- To display a theme clock, select **[Clock]**.
- To select the setup menu, select **[Setup]**.

Set time and date

- 1 Press **HOME** on the main unit.
- 2 Select **[Setup]**.
↳ The setup menu is displayed.
- 3 Select **[Clock]**.
↳ The clock setup menu is displayed.
- 4 Select **[Sync time] > [Off]**.
 - To enable time synchronization, select **[Sync time] > [On]**.
- 5 Set time and date.
 - To set the time and date, select **[Set time]/[Set date]**.
 - To set the date and time format, select **[Set date format]/[Set time format]**.

First time settings

Set up DTTV channels

- 1 Press **DTV/RADIO** to switch to the DTTV mode.
- 2 Press **SETUP**.
↳ You are prompted to select your country.
- 3 Press **▲/▼** to select your country, then press **▶||**.
↳ You are prompted to perform the auto channel search.
- 4 Select **[Auto search]**, then press **▶||**.
↳ Auto channel search starts.
↳ When auto channel search is complete, the total number of TV and radio channels found is displayed.
↳ To view the programs of the first found channel, press **▶||**.

Set up analog TV channels

- 1 Press **ATV** to switch to the analog TV mode.
- 2 Press **SETUP**.
 - ↳ The analog TV setup menu is displayed.
- 3 Select [**Auto search**], then press **▶||**.
 - ↳ You are prompted to select your country.
- 4 Press **▲/▼** to select your country, then press **▶||**.
 - ↳ Auto search starts.
 - ↳ When auto search is complete, the total number of analog TV channels is displayed.
 - ↳ To view the programs of the first found channel, press **▶||**.
 - ↳ To change channels, press **CH +/-** or **CH▲/▼** on the main unit.

Manual search

You can search TV channels manually.

Search DTTV channels manually

- 1 Press **DTV/RADIO**.
- 2 Press **SETUP**.
 - ↳ The setup menu is displayed.
- 3 Select [**DTTV**] > [**Manual search**].
 - ↳ The manual search screen is displayed.
- 4 Press **▶||** to add new channels.
- 5 Select channel number, then press **▶||**.
 - ↳ The manual search starts.
 - ↳ The number of TV and radio channels found is displayed after the manual search ends.
 - ↳ To exit manual search, press **SETUP**.

Search analog TV channels manually

- 1 Press **ATV**.
- 2 Press **SETUP**.

↳ The analog TV setup menu is displayed.

3 Select **[Manual search]>[Manual search]**.

4 Press **▶||**.

↳ The manual search starts.

↳ The number of available analog TV channels is displayed after the manual search ends.

↳ To exit manual search, press **SETUP**.

5 Watch TV





Note

- Before you start, ensure that you have connected the antenna to the set.
- Make sure you are in an area with sufficient signal coverage. You can check the signal coverage with the TV broadcast authority of your country or visit www.support.philips.com.

Turn on

Slide the **POWERON/OFF** switch to the **ON** position.

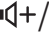

Switch to standby

- 1 To switch the unit to standby mode, press  on the main unit for 3 seconds
 - To switch on the unit from standby mode, press  on the main unit.

Switch channels

- 1 Press **CH+/CH-** or **Number keys** on the remote control.
 - You can also press **CH▲/▼** on the main unit to switch channels.

Adjust volume level

- Press  to increase/decrease the volume level.
- Press  to mute/unmute sound.




View program information (DTV)

To view brief information of the current program, press .

- To exit the program information page, press  again.



Tip

- **I-II**: Program containing different audio languages. You can press **OPTIONS** to access this function.
- : Program containing subtitles. You can press **OPTIONS** to access this function.
- : Program containing Teletext. You can press  to access this function.

Access teletext

If the current channel has teletext available,  is shown.

- To access teletext, press .






Tip


- The program may request using color keys to access or control the viewing features. Follow the instructions on the teletext screen.

Use the electronic program guide (DTV)

EPG is an on-screen guide available for digital TV programs. You can navigate, select, and view programs by time or title.

- 1 Select a channel in the digital TV mode.
- 2 Press **EPG**.
 - ↳ The Electronic Program Guide menu is displayed.
- 3 Press / to select a program.
- 4 Press  **II**.
 - ↳ The brief information of this program is displayed.
- 5 To exit the EPG menu, press **EPG**.

Manage channels (DTV)

- 1 Press  **II** in the DTV mode.
 - ↳ The channel list is displayed.
- 2 Select a channel.
 - To lock the channel, press the red button.

- You are asked to enter the password (**3308 by default**).
- To unlock the channel, press the red button.
- You are asked to enter the password (**3308 by default**).
- To hide the channel, press the yellow button.
- To add the channel to your favorite list, press the green button.

Play options

- 1 During play, press **SETUP** to select some play options.
- 2 Follow the on-screen instructions.

6 Use more of your player

Play music



Note

- Make sure that the USB/SD device contains playable audio contents for supported formats.

- 1 Connect a USB/SD device to the set.
- 2 Press **USB/SD** to select the USB/SD source.
- 3 Press ▲/▼ to select an audio file.
- 4 Press ►|| to start play.
 - To pause/resume play, press ►||.
 - To select the previous or next audio file, press ◀◀ or ▶▶.
 - To stop play, press ■.
 - To exit and return to the main menu, press **HOME** on the main unit.



Note

- Philips does not guarantee compatibility with all USB/SD devices.
- NTFS (New Technology File System) data format is not supported.

Play photos



Note

- Make sure that the USB/SD device contains JPEG files.

- 1 Connect a USB/SD device to the set.
- 2 Press **USB/SD** to select the USB/SD source.
- 3 Press ▲/▼ to select a JPEG file.
- 4 Press ►|| to start slide show.

- To pause/resume play, press ►||.
- To view the previous or next photo, press ◀◀ or ▶▶.
- To stop play, press ■.
- To rotate a photo, press ↻.
- To browse photos in the album view, press ⓘ+.
- To exit and return to the main menu, press **HOME** on the main unit.

Play DivX video

DivX video is a digital media format that retains high quality despite a high rate of compression. This set is DivX Ultra Certified so that you can enjoy DivX video with additional feature support such as menus, multiple subtitles and alternate audio tracks.



Note

- Video rented or purchased through the DivX VOD (Video on Demand) service can be played only on the device to which it is registered. Enter this set's DivX registration code when you rent or purchase video from www.divx.com/vod.
- This set can play DivX video files that are up to 4GB in size.
- Always stop play before you disconnect a USB device.

- 1 Connect a USB/SD device to the set.
- 2 Press **USB/SD** to select the USB/SD source.
- 3 Press ▲/▼ to select a DivX video file.
- 4 Press ►|| to start play.
 - To pause/resume play, press ►||.
 - To start search within video, press ◀◀ or ▶▶.
 - To stop play, press ■.
 - To exit and return to the main menu, press **HOME** on the main unit.

Display a theme clock



Note

- Make sure that have set the clock correctly.

- 1 Press **CLOCK**.
 - ↳ The clock is displayed.
 - ↳ To exit and return to the main menu, press **HOME** on the main unit.



Tip

- You can view your photos with music in the clock display if you connect a USB/SD device with audio files and JPEG files to the set.

Use the counter

- 1 At any operation mode, press **SET** repeatedly to set the countdown duration.
- 2 Press **START**.
 - ↳ The timer starts counting down.
 - ↳ When countdown ends, the alarm rings.
 - ↳ To stop the alarm, press **START**.

Set the alarm timer



Note

- Make sure that you set the clock correctly.

- 1 Press **SETUP**.
 - ↳ The setup menu is displayed.

- 2 Select **[Clock]** > **[Alarm]** > **[ON]**.
 - To turn off the alarm, select **[Off]**
- 3 Select **[Clock]** > **[Set Alarm Time]**.
- 4 Use the navigation keys to set the alarm timer and press **▶||** to confirm.

Watch connected devices



Note

- Make sure that external devices are connected to the set and work normally.

- 1 Turn on the connected device.
- 2 Press **AV-IN**.
 - ↳ The contents from the connected device is displayed.
 - ↳ To change brightness and contrast settings, press **SETUP** and select **[Brightness]** or **[Contrast]**.
 - ↳ To exit and return to the main menu, press **HOME** on the main unit.

7 Adjust settings



Note

- If the setup option is grayed out, it means that the setting cannot be changed at the current state.

To maximize your play experience, press **SETUP** to fine-tune your settings.

1 Press **SETUP**.

↳ The setup menu is displayed.

2 Use navigation keys to select an option and press **▶||** to confirm.

[General]	
[Language]	Select on-screen display language.
[DivX (VOD)]	Get DivX registration code.
[DivX subtitles]	Select DivX subtitle language.
[Set password]	Change password.
[Factory settings]	Restore factory settings.
[Video]	
[Brightness]	Adjust screen brightness.
[Contrast]	Adjust screen contrast.
[Audio]	
[Downmix]	Adjust down mix settings.
[Audio CH]	Set audio output channel.
[DTTV]	
[Auto search]	Search channels automatically.
[Manual search]	Search channels manually.
[DTTV Parental]	Select parental options.
[Country]	Select specific country.
[Time settings]	Set time.

[Clock]	
[Set time]	Set displayed time.
[Set date]	Set displayed date.
[Set date format]	Set date format.
[Set time format]	Set time format.
[Sync time]	Set time synchronization on/off.
[Alarm]	Set alarm on/off.
[Set Alarm Time]	Set alarm time.
[Photo]	
[Frequency]	Select intervals for JPEG play.
[Transition]	Select the effect for slide show.
[Format]	Select display format.
[Display]	Select photo display mode.
[Version]	Check the version information.

3 Press ◀◀ to go back to the previous menu.

4 Press **SETUP** to exit.

8 Mount the set

You can mount the set under your kitchen cabinet.

Test TV reception quality



Caution

- Test the TV reception before mounting the set under the kitchen cabinet.
- If the TV reception is poor, connect the main unit with a fix TV cable or buy an active antenna (PHILIPS SDV 2740, SDV 6122, SDV 2750).

- 1 Connect the supplied antenna to **ANTENNA** jack.
- 2 Place the main unit as close to open area or window as possible.
- 3 Adjust the place of the main unit until you get good signal reception.

Preparation



Note

- Ask a friend or professional personnel to safely mount the product under your kitchen cabinet.

- a. Find a mounting location near a wall outlet.
- b. Use the mounting template to test the design and thickness of your kitchen cabinet.
- c. Decide whether you want to connect the set with other audio/video equipment.

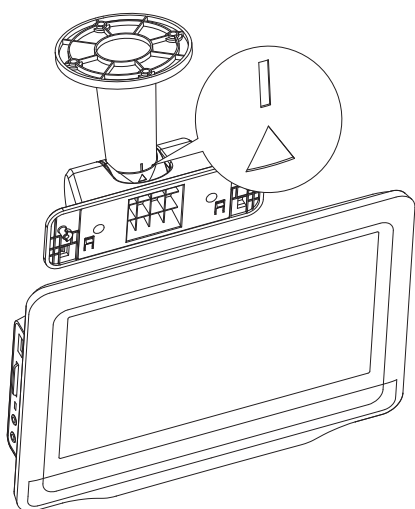
Mounting the set



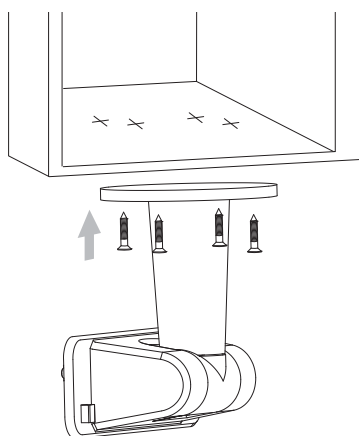
Warning

- Install the set as far as possible from sources of interference, such as a refrigerator, microwave oven, fluorescent lamp, and so on.
- Install the set on a board that is at least 15mm thick.

- 1 Find a spot near a wall outlet and an antenna jack.
- 2 Verify the correct mounting direction.

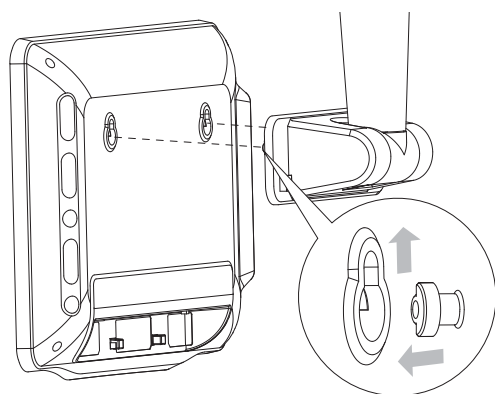


- 3 Attach the mounting arm to the mounting surface.
 - Make sure that the mounting plate is parallel to the mounting surface.
- 4 Fix the supplied screws vertically and firmly into the board.



- 5 Detach all the connections from the set.

- 6 Align the mounting holes.
- 7 Hook the set onto the mounting arm until locked securely.



- 8 Make all the connections.

9 Product information



Note

- Product information is subject to change without prior notice.

Product information

Dimensions	181.3 × 247.9 × 30.8 mm
Weight	0.88 kg
Power supply	Input: AC 100-240V, 50/60 Hz Output: DC 12V 1A
Power consumption	≤ 12W
Operating temperature range	0 - 40°C (32 - 104°F)
TV system	DVB-T/Analogue TV
Speaker	2 × 1.5W (RMS)
USB	2.0
Card	SD memory card

USB playability information

Compatible USB devices:

- USB flash memory (USB 2.0 or USB 1.1)
- USB flash players (USB 2.0 or USB 1.1)
- memory cards (requires an additional card reader to work with this unit)

Supported formats:

- USB or memory file format FAT12, FAT16, FAT32 (sector size: 512 bytes)
- MP3 bit rate (data rate): 32-320 Kbps and variable bit rate
- WMA v9 or earlier

- Directory nesting up to a maximum of 8 levels
- Number of albums/ folders: maximum 99
- Number of tracks/titles: maximum 999
- ID3 tag v2.0 or later
- File name in Unicode UTF8 (maximum length: 128 bytes)

Unsupported formats:

- Empty albums: an empty album is an album that does not contain MP3/WMA files, and is not be shown in the display.
- Unsupported file formats are skipped. For example, Word documents (.doc) or MP3 files with extension .dlf are ignored and not played.
- AAC, WAV, PCM audio files
- DRM protected WMA files (.wav, .m4a, .m4p, .mp4, .aac)
- WMA files in Lossless format

10 Troubleshooting



Warning

- Never remove the casing of this apparatus.

To keep the warranty valid, never try to repair the system yourself. If you encounter problems when using this apparatus, check the following points before requesting service. If the problem remains unsolved, go to the Philips web site (www.philips.com/welcome). When you contact Philips, ensure that the apparatus is nearby and the model number and serial number are available.

No power

- Ensure that both plugs of the mains cord are properly connected.
- Ensure that there is power at the AC outlet.
- Check if the built-in battery is drained.

No response to the remote control

- Ensure that the path between the remote control and the player is clear from obstacles.
- From a close distance, point the remote control directly at the player.
- Replace the remote control batteries.
- The function does not work for this disc. Refer to the disc instructions.

No sound

- Adjust the volume.

TV reception with Black and White picture or no sound

- Ensure that you set the TV system and TV sound correctly according to local TV broadcast specifications. If you do not know the information, contact local TV broadcast authorities for help.

USB device not supported

- The USB device is incompatible with the unit. Try another one.

Cannot display some files in USB device

- The number of folders or files in the USB device has exceeded a certain limit. This phenomenon is not a malfunction.
- The formats of these files are not supported.

Timer does not work

- Set the clock correctly.
- Switch on the timer.

Clock/timer setting erased

- Power has been interrupted or the power plug has been disconnected.
- Reset the clock/timer.