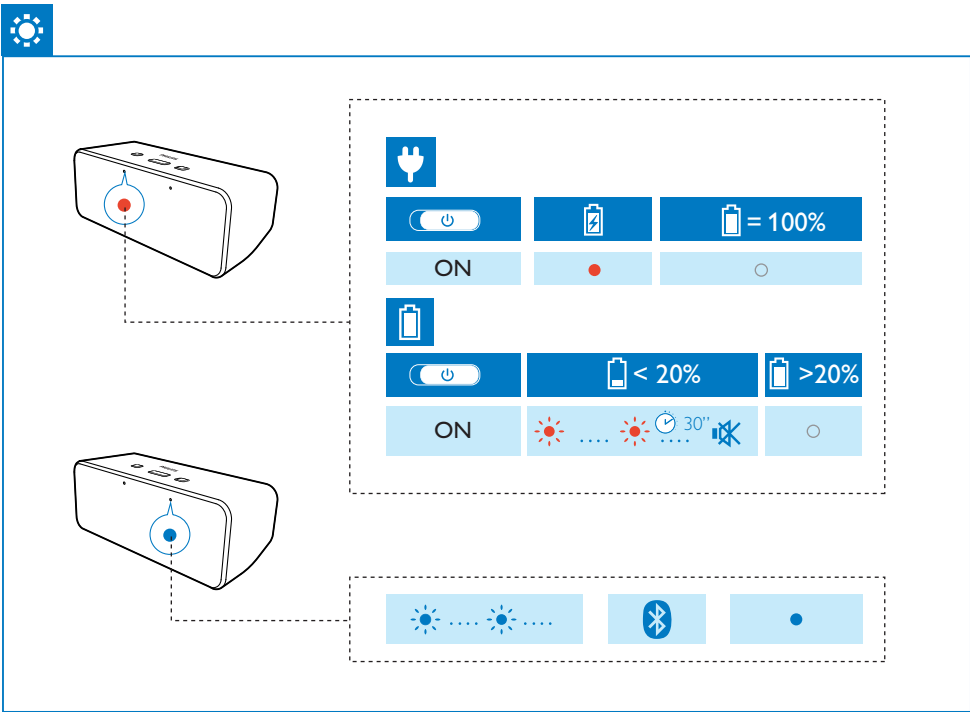
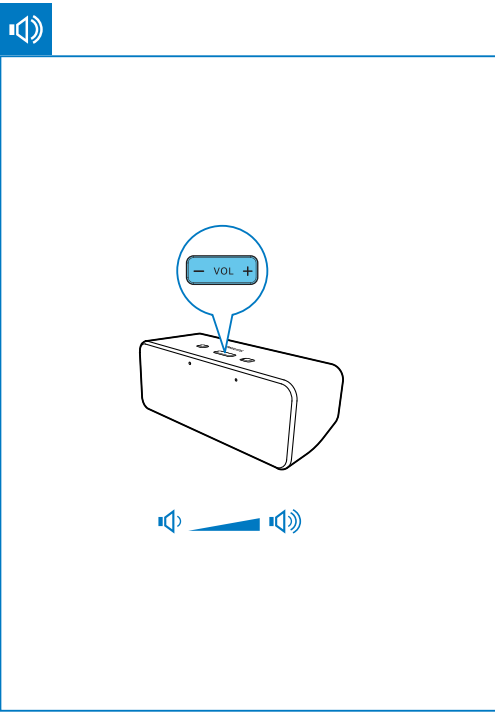
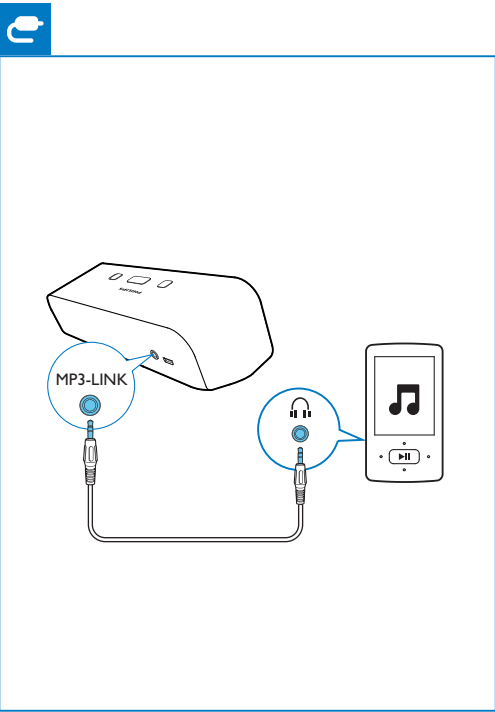
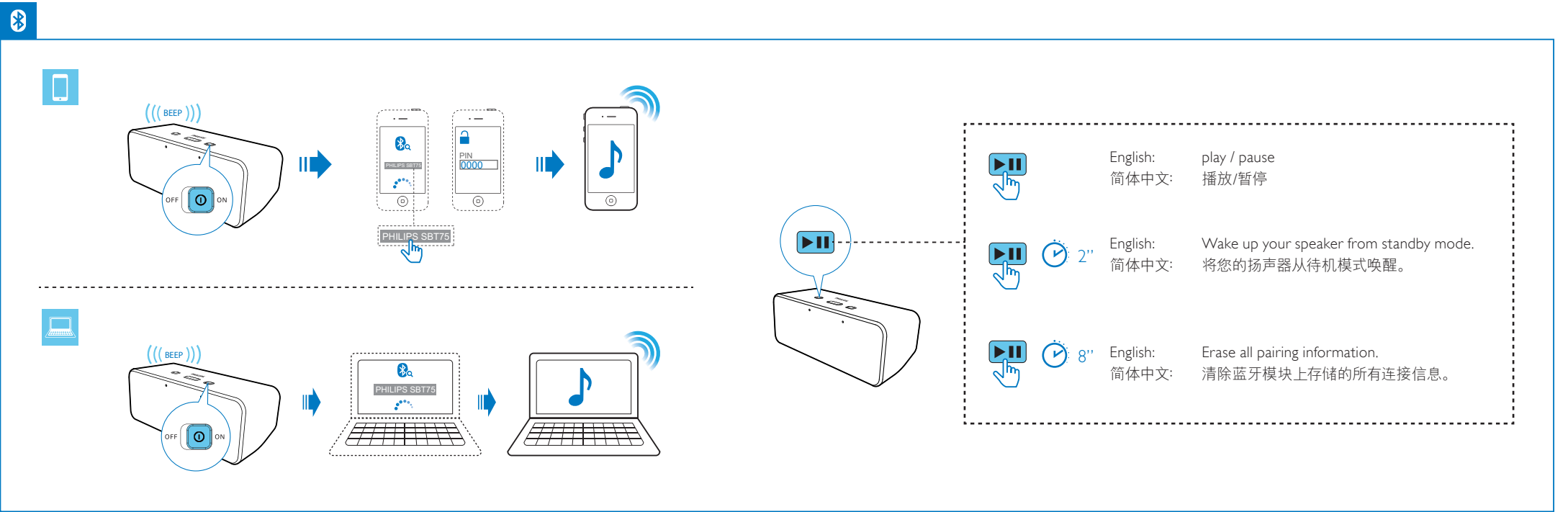
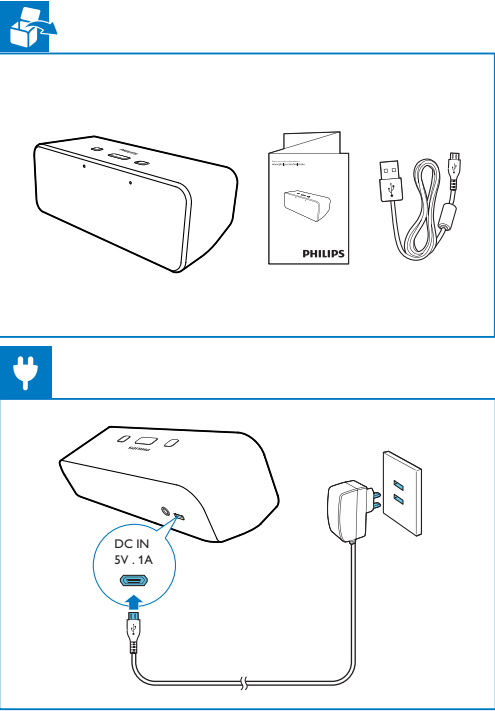




快速使用指南

PHILIPS





Before using your product, read all accompanying safety information.

English

Specifications	
Amplifier	
Rated Output Power	2X2 W RMS
Signal to Noise Ratio	> 67 dBA
MP3 Link	600 mV RMS 20 kohm
General information	
DC Power Input	Input: 5 V==1 A
Operation Power Consumption	3 W
Eco Standby Power Consumption	<0.5 W
Dimensions - Main Unit	184 x 62 x 63mm
Weight - Main Unit	0.388 kg

使用产品 之前， 请先阅读所有随附的安全信息。

简体中文

规格

功放器	
额定输出功率	2X2 瓦 RMS
信噪比	> 67 dBA
MP3 Link	600 毫伏 RMS 20 千欧姆

一般信息

直流电源	输入: 5伏 == 1安
工作功耗	3瓦
尺寸 - 主装置 (宽 x 高 x 厚)	184 x 62 x 63毫米
重量 - 主装置	0.388 千克

Important

Safety

Important Safety Instructions

- Read these instructions.
- Heed all warnings.
- Follow all instructions.
- Do not use this device near water.
- Clean only with dry cloth.
- Do not block any ventilation openings. Install in accordance with the manufacturer's instructions.
- Do not install near any heat sources such as radiators, heat registers, stoves, or other devices (including amplifiers) that produce heat.
- Protect the power cord from being walked on or pinched, particularly at plugs, convenience receptacles, and the point where they exit from the device.
- Only use attachments/accessories specified by the manufacturer.
- Unplug this device during lightning storms or when unused for long periods of time.
- Refer all servicing to qualified service personnel. Servicing is required when the device has been damaged in any way, such as power-supply cord or plug is damaged, liquid has been spilled or objects have fallen into the device, the device has been exposed to rain or moisture, does not operate normally, or has been dropped.
- Devices shall not be exposed to dripping or splashing.
- Do not place any sources of danger on the device (e.g. liquid filled objects, lighted candles).
- Where the plug of the Direct Plug-in Adapter is used as the disconnect device, the disconnect device shall remain readily operable.



Warning

- Never remove the casing of this apparatus.
- Never lubricate any part of this apparatus.
- Never place this apparatus on other electrical equipment.

Notice

Any changes or modifications made to this device that are not expressly approved by Philips Consumer

Lifestyle may void the user's authority to operate the equipment.

CE0560

This product complies with the requirement of the 1999/5/EC directive.



This product complies with the radio interference requirements of the European Community.



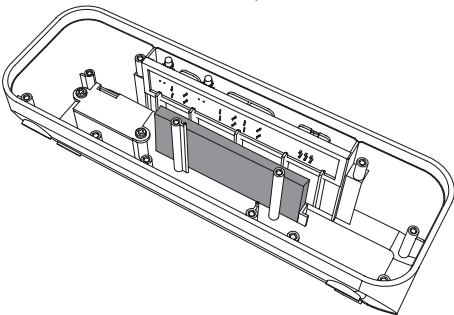
Your product is designed and manufactured with high quality materials and components, which can be recycled and reused.



When this crossed-out wheeled bin symbol is attached to a product it means that the product is covered by the European Directive 2002/96/EC. Please inform yourself about the local separate collection system for electrical and electronic products. Please act according to your local rules and do not dispose of your old products with your normal household waste. Correct disposal of your old product helps to prevent potential negative consequences for the environment and human health.



Your product contains batteries covered by the European Directive 2006/66/EC, which cannot be disposed with normal household waste. Please inform yourself about the local rules on separate collection of batteries because correct disposal helps to prevent negative consequences for the environmental and human health. Always bring your product to a professional to remove the built-in battery.



Environmental information

All unnecessary packaging has been omitted. We have tried to make the packaging easy to separate into three materials: cardboard (box), polystyrene foam (buffer) and polyethylene (bags, protective foam sheet.) Your system consists of materials which can be recycled and reused if disassembled by a specialized company. Please observe the local regulations regarding the disposal of packaging materials, exhausted batteries and old equipment.



Be responsible
Respect copyrights

The making of unauthorized copies of copy-protected material, including computer programs, files, broadcasts and sound recordings, may be an infringement of copyrights and constitute a criminal offence. This equipment should not be used for such purposes.



Note

- The type plate is located on the bottom of the apparatus.

1 注意事项

安全

重要安全说明

- 阅读这些说明。
- 注意所有警告。
- 遵循所有说明。
- 不要在靠近水的地方使用本设备。
- 只能使用干布进行清洁。
- 不要堵塞任何通风口。 按照制造商的说明进行安装。
- 不要在任何热源附近安装，如散热器、蓄热器、炉具或其它发热设备 (包括功放器)。
- 防止电源线被踩踏或挤夹，特别是在插头、电源插座和设备电源线出口位置。
- 仅使用制造商指定的附件/配件。
- 在雷电天气期间或长期不用的情况下，请拔下本设备的电源插头。
- 所有维修均应 by 合格的维修人员来执行。 本设备有任何损坏时，如电源线或插头损坏，液体泼溅到或物体跌落到设备上，设备淋雨或受潮，无法正常运行，或者跌落，均需要进行维修。

- 切勿将本设备暴露在漏水或溅水环境下。
- 不要将任何危险源放在本设备上 (例如装有液体的物体、点燃的蜡烛)。
- 如果将直插式适配器的插头用作断开设备，则断开设备应可以随时使用。



警告

- 切勿拆下本产品的外壳。
- 切勿润滑本装置的任何部件。
- 切勿将本装置放在其它电器设备上面。

注意

如果用户未经 Philips 优质生活部门的明确许可而擅自对此设备进行更改或修改，则可能导致其无权操作此设备。

CE0560

本产品符合1999/5/EC指令的要求。



本产品符合欧盟的无线电干扰要求。



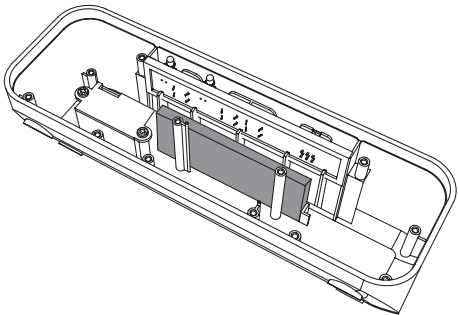
本产品采用可回收利用的高性能材料和组件制造而成。



如果产品上贴有带叉的轮式垃圾桶符号，则表示此产品符合欧盟指令 2002/96/EC。请熟悉当地针对电子和电器产品制订的分门别类的收集机制。请遵循当地的规章制度，不要将旧产品与一般的生活垃圾一同弃置。正确弃置旧产品有助于避免对环境 and 人类健康造成潜在的负面影响。



该产品含有符合欧洲指令 2006/66/EC 的电池，不能与一般的生活垃圾一同弃置。请熟悉当地有关单独收集电池的规章制度，因为正确弃置将有助于避免对环境 and 人类健康造成负面影响。务必让专业人员拆卸产品中的内置电池。



环境信息

已省去所有不必要的包装。 我们努力使包装易于分为三种材料: 纸板 (盒)、泡沫塑料 (缓冲物) 和聚乙烯 (袋、保护性泡沫片)。您的系统包含可回收利用的材料 (如果由专业公司拆卸)。 请遵守当地有关包装材料、废电池和旧设备的处理的规定。



Be responsible
Respect copyrights

进行受版权保护材料 (包括计算机程序、文件、广播和录音) 的未授权复制可能会侵犯版权并构成犯罪。 不得将此设备用于这些目的。



注

- 型号铭牌位于本设备的底部。

