

Always there to help you

Register your product and get support at  
www.philips.com/welcome

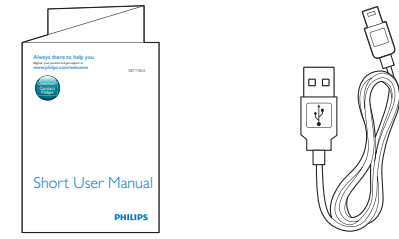
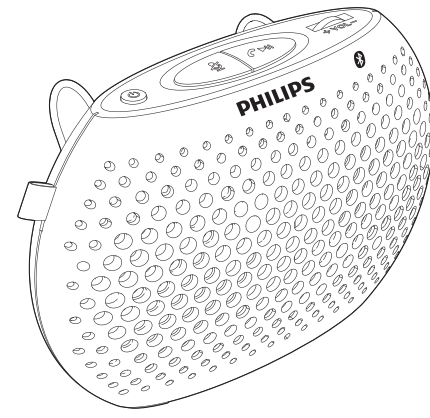
SBT11BLK

Question?  
Contact  
Philips

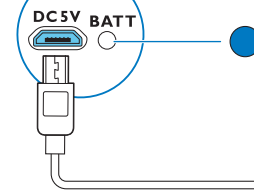
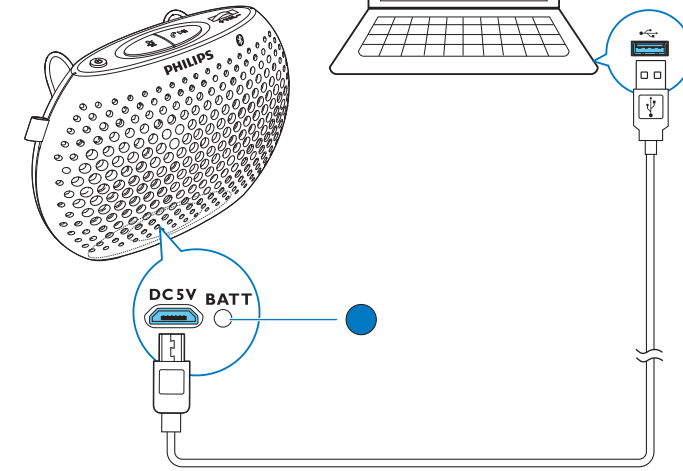


# Short User Manual 简明用户手册

Philips Electronics Hong Kong Ltd.

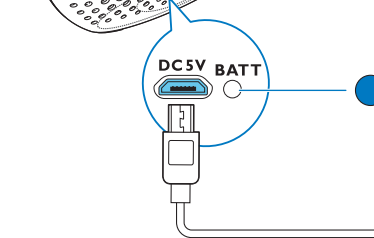
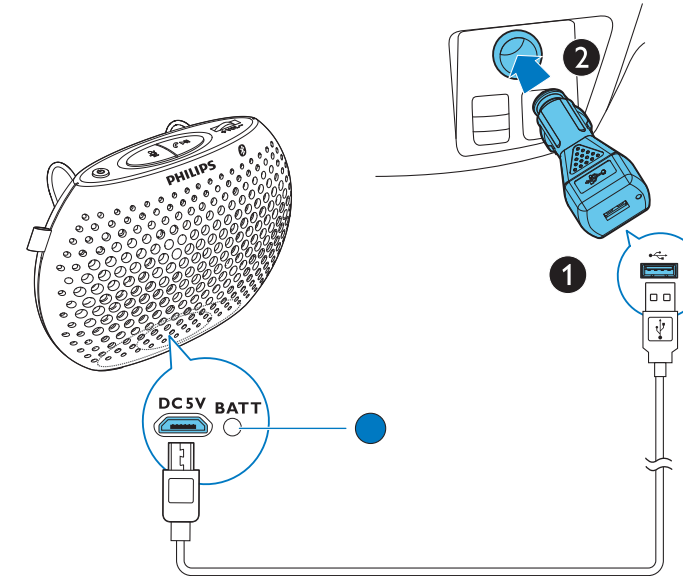


Before using your product, read all accompanying safety information.  
使用产品之前, 请先阅读所有随附的安全信息。



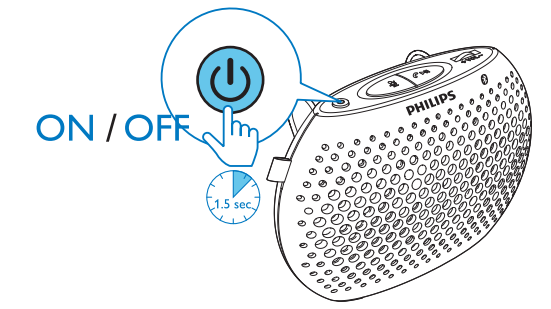
Charging indicator

Indicator	Battery
Solid green	Under charging
Off	Fully charged



充电指示灯

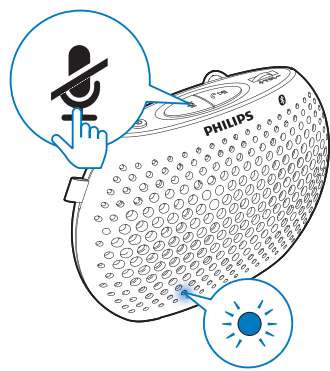
指示灯	电池
呈绿色持续亮起	正在充电
关	充满电



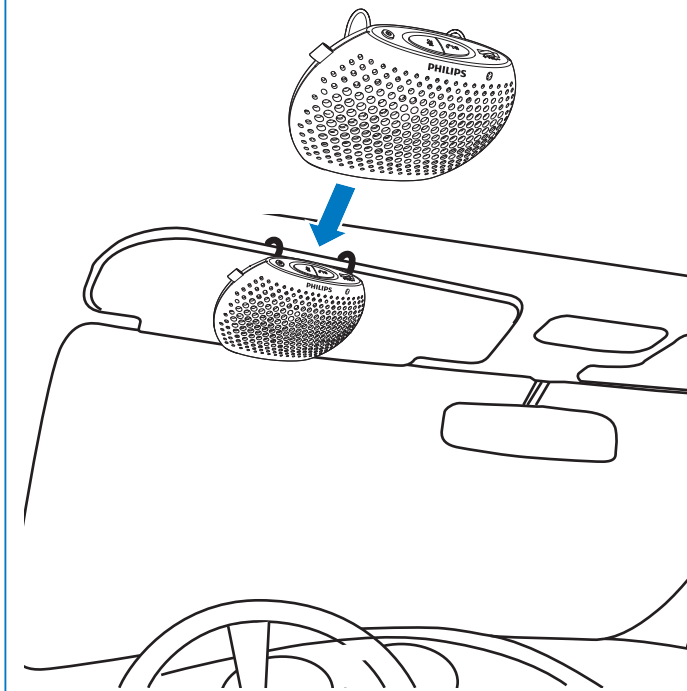
ON / OFF

If an audio input cable is connected to the **AUX** socket, this product does not automatically power off.  
In Bluetooth mode, if Bluetooth connection is invalid for 15 minutes, this product automatically powers off.

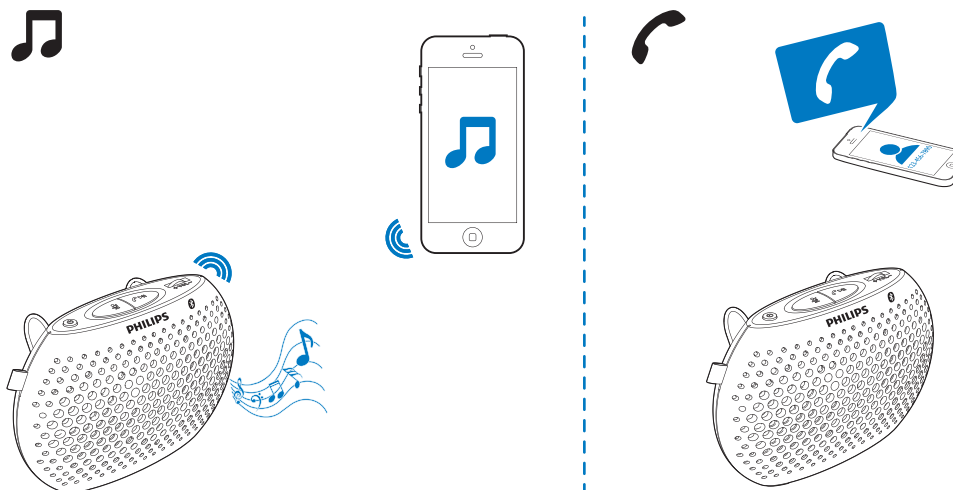
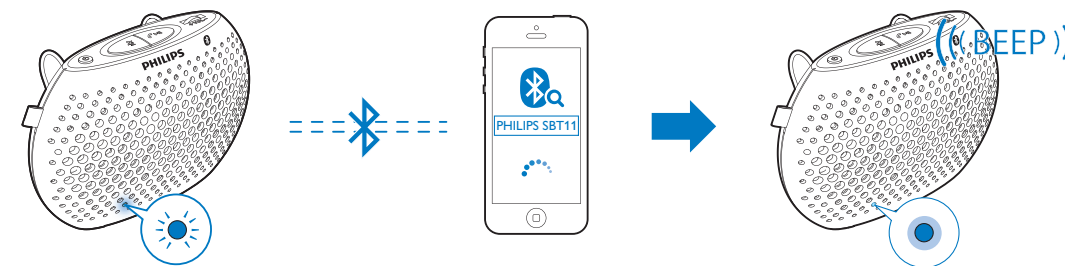
如果音频输入线缆连接至 **AUX** 插孔, 则本产品无法自动关机。  
在蓝牙模式下, 如果蓝牙连接无效达 15 分钟, 则本产品会自动关机。



In mute status, the bluetooth indicator keeps flashing.  
静音状态下, 蓝牙指示灯持续闪烁。



Securely fix this product to the driver-side sun visor with the clip.  
用夹子将本产品安全固定在驾驶位一侧的遮阳板上。



Note:

Make sure that no audio input cable is connected to the **AUX** socket.  
To turn off the Bluetooth indicator, press and hold **⏏** and **⏏** simultaneously for 1.5 seconds. To turn on the Bluetooth indicator, press and hold **⏏** for 1.5 seconds.

Bluetooth indicator

Indicator	Bluetooth connection
Blinking blue	Connecting or waiting for connection
Solid blue	Connected

Control

Buttons	Functions
<b>⏏</b>	Start, pause, or resume play. Press to answer an incoming call. Press to end the current call. Press and hold to reject an incoming call. Press twice to dial the last called number. Press twice to hold on the current call and answer another incoming call.
<b>🔇</b>	Mute the integrated microphone or release it from mute status.
<b>+ VOL -</b>	Increase or decrease the speaker volume.

注意:

确保音频输入线缆未连接至 **AUX** 插孔。  
要关闭蓝牙指示灯, 同时按下 **⏏** 和 **⏏** 键1.5秒。要关闭蓝牙指示灯, 按住 **⏏** 键1.5秒。

蓝牙指示灯

指示灯	蓝牙连接
呈蓝色闪烁	正在连接或等待连接
呈蓝色持续亮起	已连接

控件

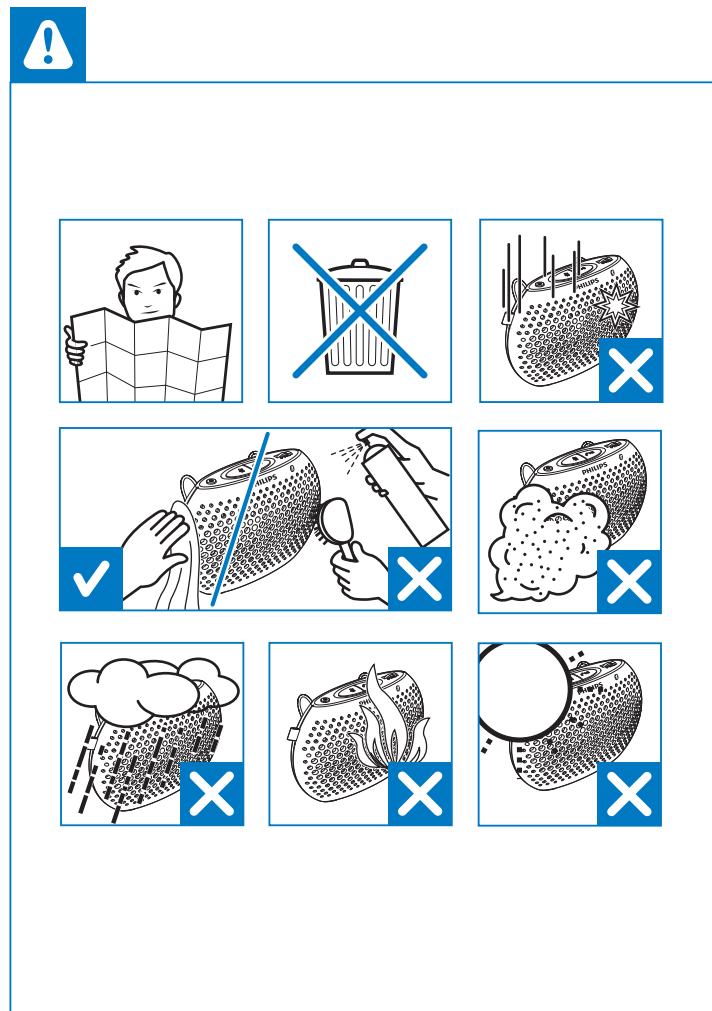
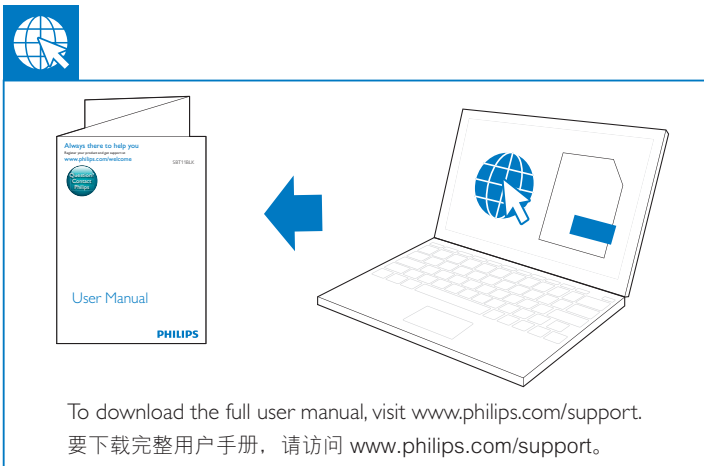
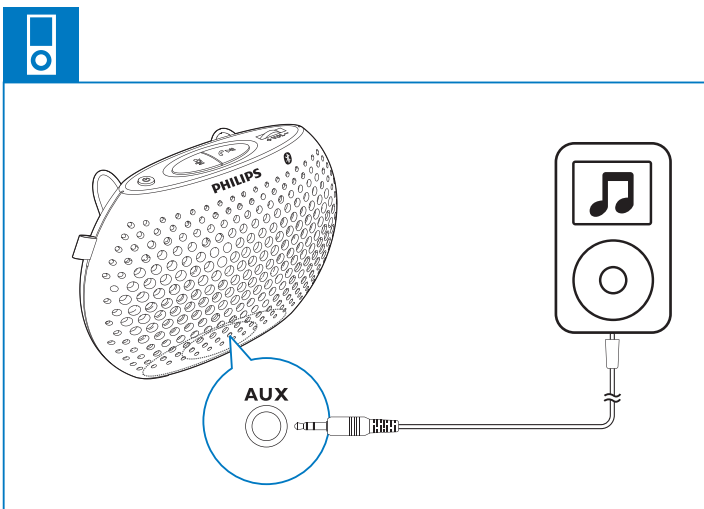
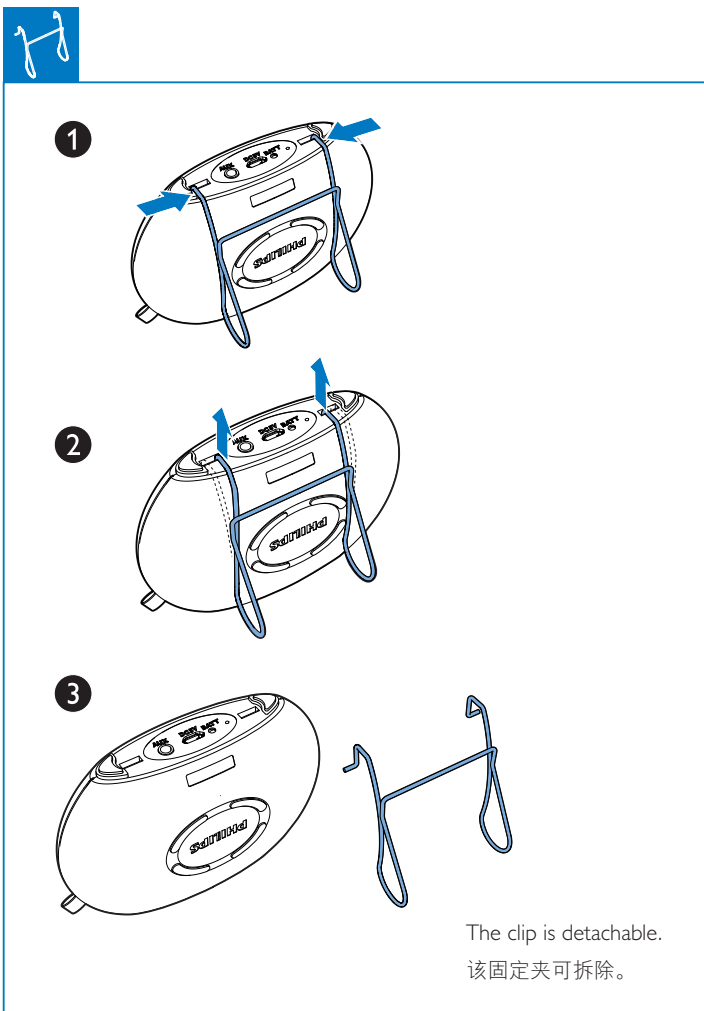
按钮	功能
<b>⏏</b>	播放、暂停或继续播放。 按下可接听来电。 按下可结束当前通话。 按住可拒接来电。 按两次可拨打上一个呼叫号码。 按两次可保持当前通话并接听其他来电。
<b>🔇</b>	将集成式麦克风静音或取消静音。
<b>+ VOL -</b>	增大或减小扬声器音量。



All registered and unregistered trademarks are property of their respective owners.  
© 2013 Koninklijke Philips Electronics N.V.  
All rights reserved.

SBT11BLK\_93\_Short User Manual\_V1.1





部件名称 Name of the Parts	有毒有害物质或元素 Hazardous/toxic Substance					
	铅 (Pb, Lead)	汞 (Hg, Mercury)	镉 (Cd, cadmium)	六价铬(Chromium 6+)	多溴联苯 (PBB)	多溴二苯醚 (PBDE)
Housing 外壳	○	○	○	○	○	○
Loudspeakers 喇叭单元	○	○	○	○	○	○
PWBs 电路板组件	x	○	○	○	○	○
Accessories (cables) 附件(电源线, 连接线)	x	○	○	○	○	○

○: 表示该有毒有害物质在该部件所有均质材料中的含量均在SJ/T11363 - 2006 标准规定的限量要求以下。  
○: Indicates that this toxic or hazardous substance contained in all of the homogeneous materials for this part is below the limit requirement in SJ/T11363 - 2006.

x: 表示该有毒有害物质至少在该部件的某一均质材料中的含量超出SJ/T11363 - 2006 标准规定的限量要求。  
x: Indicates that this toxic or hazardous substance contained in at least one of the homogeneous materials used for this part is above the limit requirement in SJ/T11363 - 2006.



此标识指期限 (十年, 从生产日期算起), 电子信息产品中含有的有毒有害物质或元素在正常使用的条件下不会发生外泄或突变, 电子信息产品用户使用该电子信息产品不会对环境造成严重污染或对其人身、财产造成严重损害的期限。  
This logo refers to the period ( 10 years ) during which the toxic or hazardous substances or elements contained in electronic information products will not leak or mutate so that the use of these [substances or elements] will not result in any severe environmental pollution, any bodily injury or damage to any assets.

## EN

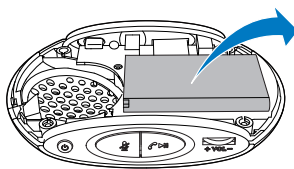
### 1 Important

- Read these instructions.
- Heed all warnings.
- Follow all instructions.
- Do not use this apparatus near water.
- Do not install near any heat sources such as radiators, heat registers, stoves, or other apparatus (including amplifiers) that produce heat.
- Only use attachments/accessories specified by the manufacturer.
- Refer all servicing to qualified service personnel. Servicing is required when the apparatus has been damaged in any way, such as liquid has been spilled or objects have fallen into the apparatus, the apparatus has been exposed to rain or moisture, does not operate normally, or has been dropped.
- The battery shall not be exposed to excessive heat such as sunshine, fire or the like.
- Apparatus shall not be exposed to dripping or splashing.
- Do not place any sources of danger on the apparatus (e.g. liquid filled objects, lighted candles).

**!** Caution

- Removal of the built-in battery invalidates the warranty and may destroy the product.

Always bring your product to a professional to remove the built-in battery.



**≡** Note

- The type plate is located on the back of the product.

### 2 Notice

Any changes or modifications made to this device that are not expressly approved by Philips Consumer Lifestyle may void the user's authority to operate the equipment.

### Care of the environment

Your product is designed and manufactured with high quality materials and components, which can be recycled and reused.  
Never dispose of your product with other household waste. Please inform yourself about the local rules on the separate collection of electrical and electronic products and batteries. The correct disposal of these products helps prevent potentially negative consequences on the environment and human health.

Your product contains batteries, which cannot be disposed of with normal household waste. Please inform yourself about the local rules on separate collection of batteries. The correct disposal of batteries helps prevent potentially negative consequences on the environment and human health. Please visit [www.recycle.philips.com](http://www.recycle.philips.com) for additional information on a recycling center in your area.

**Environmental information**  
All unnecessary packaging has been omitted. We have tried to make the packaging easy to separate into three materials: cardboard (box), polystyrene foam (buffer) and polyethylene (bags, protective foam sheet).  
Your system consists of materials which can be recycled and reused if disassembled by a specialized company. Please observe the local regulations regarding the disposal of packaging materials, exhausted batteries and old equipment.

### Trademark notice

The Bluetooth® word mark and logos are registered trademarks owned by Bluetooth SIG, Inc. and any use of such marks by Philips is under license.

### Copyright

2013 © Koninklijke Philips Electronics N.V.  
Specifications are subject to change without notice. Trademarks are the property of Koninklijke Philips Electronics N.V. or their respective owners. Philips reserves the right to change products at any time without being obliged to adjust earlier supplies accordingly.

### 3 Product information

**≡** Note

- Product information is subject to change without prior notice.

General information	
Power Supply (through USB socket)	5V, 0.6A;
Built-in Battery	Lithium battery
Dimensions - Main Unit (W x H x D)	107 X 73 X 53 mm
Weight - Main Unit	0.125 kg

Bluetooth	
Bluetooth specification	V2.1+EDR
Supported profiles	HFP v1.6, AD2P v1.2, HSP v1.2
Range	10 m (Free space)

Amplifier	
Rated Output Power	1.2 W RMS
Signal to Noise Ratio	> 62 dBA
Aux Input	600 mV RMS, 22 kOhm

## ZH-CN

### 1 注意事项

- 阅读这些说明。
- 注意所有警告。
- 遵循所有说明。
- 不要在靠近水的地方使用本装置。
- 不要在任何热源附近安装, 如散热器、蓄热器、炉具或其它发热设备 (包括功放器)。
- 仅使用制造商指定的附件/配件。
- 所有维修均应由合格的维修人员来执行。本装置有任何损坏时, 如液体泼溅到或物体跌落到装置上, 装置淋雨或受潮, 无法正常运行, 或者跌落, 均需要进行维修。
- 不可将电池置于高温环境, 如阳光直射处、明火或类似环境。
- 切勿将本装置置于漏水或溅水环境下。
- 不要将任何危险源放在本装置上 (例如装有液体的物体、点燃的蜡烛)。

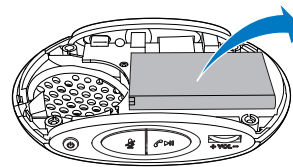


- 仅在非热带地区使用本产品。

**!** 注意

- 拆卸内置电池将使保修失效, 并可能损坏本产品。

务必让专业人士拆卸产品中的内置电池。



**≡** 注

- 铭牌 (铭牌上的信息包括工作电压) 位于主机背部, 使用前请先了解铭牌上的相关信息。

### 2 注意

如果用户未经 Philips 优质生活部门的明确许可而擅自对此设备进行更改或修改, 则可能导致其无权操作此设备。

### 爱护环境

本产品采用可回收利用的高性能材料和组件制造而成。  
切勿将本产品与其它生活垃圾一起处理。请自行了解当地关于分类收集电子、电气产品及电池的规定。正确弃置这些产品有助于避免对环境 and 人体健康造成潜在的负面影响。本产品所含的电池不能与一般的生活垃圾一同弃置。  
请自行了解当地关于分类收集电池的规定。正确弃置电池有助于避免对环境 and 人类健康造成潜在的负面影响。  
关于您所在地区回收中心的更多信息, 请访问 [www.recycle.philips.com](http://www.recycle.philips.com)。

**环境信息**  
已省去所有不必要的包装。我们努力使包装易于分为三种材料: 纸板 (盒)、泡沫塑料 (缓冲物) 和聚乙烯 (袋、保护性泡沫片)。  
您的系统包含可回收利用的材料 (如果由专业公司拆卸)。请遵守当地有关包装材料、废电池和旧设备的处理的规定。

### 商标声明

蓝牙® 词汇和标识均为 Bluetooth SIG, Inc. 所有, Philips 对这些词汇和标识的任何使用均属合法。

### 版权

2013 © Koninklijke Philips Electronics N.V.  
规格如有更改, 恕不另行通知。所有商标均是 Koninklijke Philips Electronics N.V. 或其各自所有者的财产。飞利浦保留随时更改产品的权利, 而且没有义务对较早提供的产品进行相应的调整。

### 3 产品信息

**≡** 注

- 产品信息如有更改, 恕不另行通知。

### 一般信息

电源 (通过 USB 插孔)	5 伏, 0.6 安
内置电池	锂电池
尺寸 - 主装置 (宽 x 高 x 厚)	107 X 73 X 53 毫米
重量 - 主装置	0.125 千克

### 蓝牙

蓝牙规格	V2.1+EDR
支持的模式	HFP v1.6, AD2P v1.2, HSP v1.2
范围	10 米 (开阔空间)

### 功放器

额定输出功率	1.2 瓦 RMS
信噪比	> 62 dBA
AUX 输入	600 毫伏 RMS, 22 千欧