

PHILIPS

Soundbar

HTLI04I



User manual

Register your product and get support at
www.philips.com/welcome

Content

General Information	1
Safety Instructions	
Warnings	
Care & Safety Information	
Setup	2
Soundbar Placement	
Connections	3
Input Connections	
Remote Control	4
Getting Started	5-6
Trouble Shooting	7
Specification	8
Warranty	9

Accessories

	Qty.
1. 2 RCA to 2 RCA Cable	1
2. User Manual	1
3. Remote Control	1
4. Rowel Plug + Screw	2 Each
5. Wall Mounting Marker slip	1

General Information

Safety Instructions

Please read carefully the Safety Mark on the Back side



This mark is intended to alert the users from the non isolated dangerous voltage within the product that may be of sufficient magnitude to constitute a risk of electric shock to persons



This mark is intended to alert the user for important operating and servicing instruction

Warnings

- * Avoid sustained periods on high-volume use, and do not turn the volume to maximum level while using high output signal, such as Mobile Phone or DVD, etc., as this will cause distortion and may damage the loudspeaker cones.
- * Please switch off the system from the wall socket, when not in use.
- * Please unplug the system from the AC outlet when unused for a long time
- * Do not open the cover or back panel to avoid electronic shock or any other accidents. No user-serviceable parts are inside.
- * Only for indoor use.
- * Plug the system to the AC outlet with the right voltage marked on the back panel of the Sound Bar.

Care and safety information

Avoid high temperatures, moisture, water and dust

- Apparatus should not be exposed to dripping or splashing of liquid.
- Do not place any sources of danger on the Bar (e.g. liquid filled objects, lighted candles).
- Do not install near heat sources.

Do not block any ventilation openings

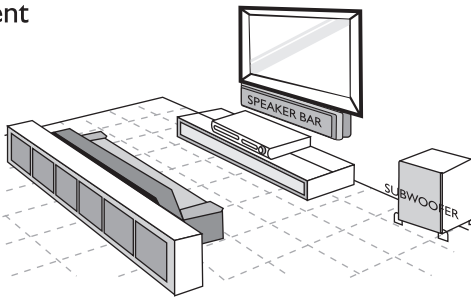
- Place the apparatus in a location with adequate ventilation to prevent internal heat build up. Allow at least 100cm (4 inches) of free space all around the apparatus for adequate ventilation.
- At high volume the back cover of Bar becomes hot. Do not touch it.

Care of the cabinet

- Use a soft cloth slightly moistened to clean the cabinet. Do not use a solution containing alcohol, spirits, ammonia or abrasives.

Speaker Placement & Connections

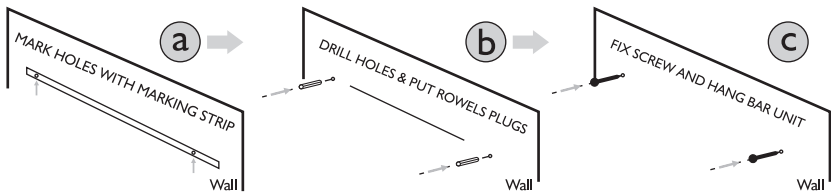
(A) Placement



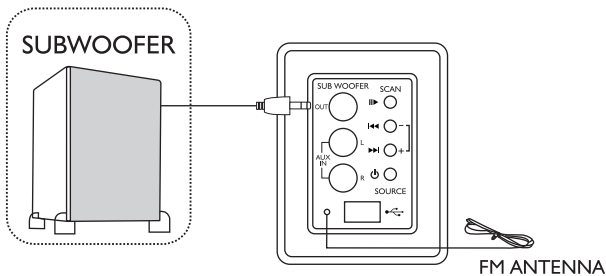
- Place Speaker Bar on top of a table or mount it on the wall.
- Place it at a height that is closest to the listening ear-level.
- Position Speaker Bar so that it is directly parallel to the listening area.
- Place the subwoofer at the corner of the room or at least one meter away from the TV.

(B) Wall Mounting

Get ready with wall mounting arrangement using provided accessories.



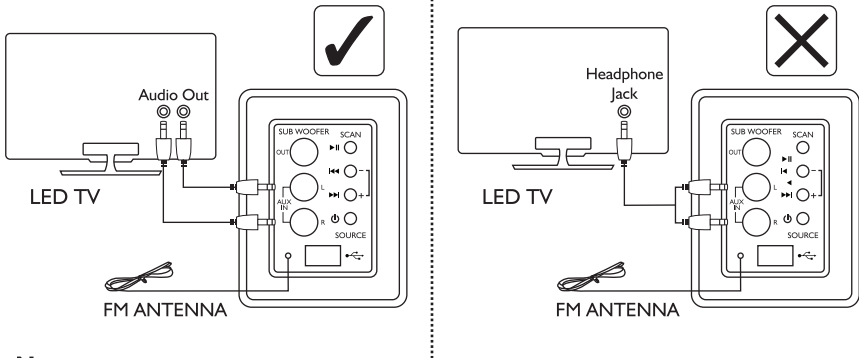
(C) Connections



- Note
- * Placement of subwoofer is very important for low frequency response.
 - * Do not keep any object below subwoofer.

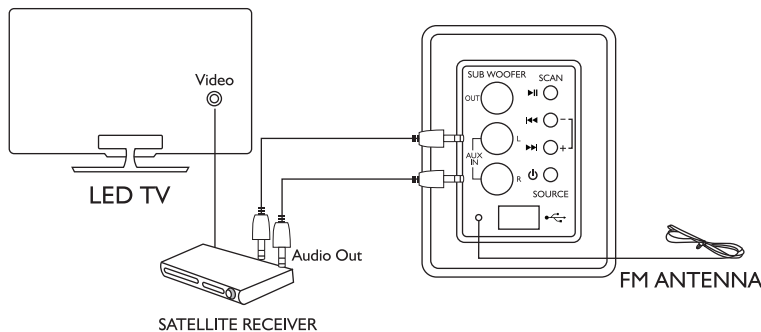
Input Connections

A Connect audio from TV

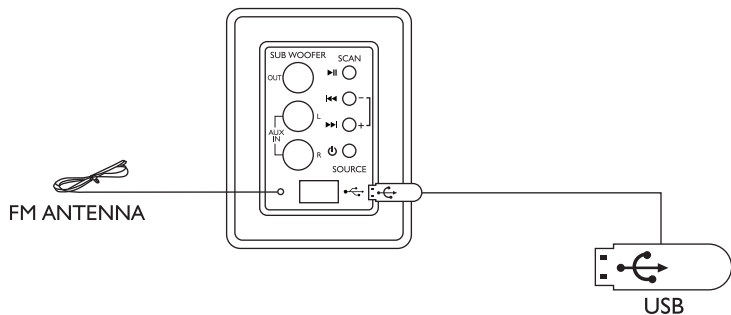


Note :
Do not attach soundbar with Earphone / Headphone jack of LED TV.
It may effect the sound and reliability of Soundbar

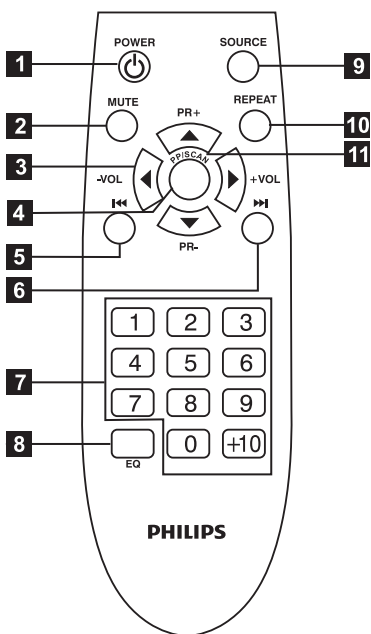
B Connect audio from Satellite Receiver



C Connect from USB



Remote Control



- 1 POWER**
Switches system ON AND STANDBY
- 2 MUTE**
Turns off speaker sound
- 3 MAIN VOLUME (<>)**
Adjusts volume of speakers.
- 4 PP / SCAN**
 - (a) Play and Pause in USB
 - (b) Auto Scan in Radio Mode
- 5 PREVIOUS <<**
 - (a) Play previous file in USB
 - (b) Long press song will rewind
 - (c) Tuning down in radio mode
- 6 NEXT >>**
 - (a) Play next file in USB
 - (b) Long press song will fast forward
 - (c) Tuning up in radio mode
- 7 DIGITS**
Press number key to play directly MP3 files
(Eg. To play 57th song press 5 then 7)
In radio mode select preset station directly
- 8 EQUALIZER**
Select preset sound modes in USB
- 9 SOURCE**
To select desired input USB / FM / AUX IN / BT
- 10 REPEAT**
Repeats a track or the entire USB
- 11 PR - / +**
Up and Down preset channel in FM

Note : Equalizer works in USB & Bluetooth Mode only.

Playing TV Audio

You can enjoy a theatre experience, just attach TV output to your Sound Bar AUX IN

1. Select source from you source key on remote
2. Display shown **IN**

Button	Action
– Volume	Volume Decrease
+ Volume	Volume Increase
Mute	To Mute / Unmute Sound

Play from a USB Storage Device

The Soundbar is fitted with a USB connector that allow you to listen music

1. Connect the USB storage device to the Soundbar.
2. It auto shifts to USB mode
3. Display shows **USB**
4. Then song number will appear on display
(eg. if you listening sixteenth songs **016** will appear)
5. Use number key to select song directly or +10 key

Note : It normal to experience on occasional 'skip' while listening to your MP3 Tracks due to poor clarity of digital contact during internet downloading & system supports USB upto 16GB only.

Button	Action
⏮ ⏭	Skips to the previous or next track
	on long press work as rewind & forward
PP/Scan	Starts, Pauses or Resume Play
Numeric Buttons	Select and song to play
Repeat	Repeats track or the entire USB
Equalizer	Selects a predefined sound effect

Play from Radio

- 1. Press source key to select FM
- 2. Display shows FM frequency (eg. 104.0)
- 3. Press following buttons to control play

Button	Action
⏮ ⏭	Search for a radio station
– PR + PR	Select a preset radio station
PP / SCAN	Press to auto scan the radio station
Numeric Keys	Select preset directly (eg. for 104.6 press 1046)

Note - While autoscanning turn off your TV/DVD or other radiation source. For best reception while listening radio turn off TV/DVD or other radiation source & extend antenna wire provided on left side of bar.

Play through Bluetooth

You can enjoy music wireless with Bluetooth

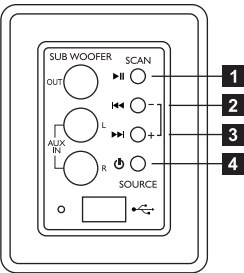
- 1. Select Source
- 2. Display Shown BLU (Flashing)
- 3. Pair Smart Phone with name HTL1041
- 4. Stop flashing once Bluetooth device is paired.

Now your system is ready to play wireless. Control all function from your smart phone eg. ⏮, ⏭, ⏻

Button	Action
– Volume	Volume Decrease
+ Volume	Volume Increase
Mute	To Mute / Unmute Sound

Note : Turn off TV while using MP3 IN

Side Panel



No.	Key	Short Press	Long Press
1	▶	Play/Pause	Scan (Radio Mode)
2	⏮	Previous	- Volume
3	⏭	Next	+ Volume
4	⏻	Mode	ST / BY

Troubleshooting

WARNING

Under no circumstances should you try to repair the system yourself, as this will invalidate the warranty. Do not open the system as there is a risk of electric shock. If a fault occurs, first check the points listed below before taking the system for repair.

If you are unable to remedy the problem by following these hints, consult your dealer or PHILIPS for help.

Problem	Solution
No power.	<ul style="list-style-type: none">— Check if the AC power cord is properly inserted into the AC mains socket.
No sound or distorted sound.	<ul style="list-style-type: none">— Adjust the volume.— Select the correct source to choose the equipment that you want to hear through the System.
The remote control does not function Properly.	<ul style="list-style-type: none">— Reduce the distance between the remote control and the system.— Replace the batteries with new ones.— Point the remote control directly toward the IR sensor (located on front panel of the Soundbar).— Check that the batteries are loaded correctly.— Switch off system for 30 seconds and then restart
Low hum or buzz sound.	<ul style="list-style-type: none">— Place the product as far away as possible from electrical devices that may be causing interference.— Check power supply voltage and consult electrician
The content of the USB flash drive cannot be read	<ul style="list-style-type: none">— The USB flash drive format is not compatible with the system. Drive is formatted with a different file system which is not supported by this unit (e.g. NTFS)
Slow operation of the USB Flash drive	<ul style="list-style-type: none">— Large file size of high memory USB flash drive takes longer time to read and play.
Cannot detect USB flash drive	<ul style="list-style-type: none">— Take out USB drive insert it again properly.
FM not properly tuned	<ul style="list-style-type: none">— Match with local frequency
FM reception not good	<ul style="list-style-type: none">— While listening radio turn off TV/DVD or other radiation source.— Extend antenna wire
Bluetooth	<ul style="list-style-type: none">— Reduce the distance between system and your device.— Re-Pair the device.

Product Specifications*

Total System Power	40W RMS
Speaker Bar Power	22W RMS
Subwoofer Bar Power	18W RMS
Separation	> 35db
SNR	> 65db
Audio Input Socket	RCA Type
Audio Output Socket	RCA Type
Power Consumption	15 W
Bluetooth Range	Upto 10 Mtrs.
Subwoofer Speaker	1 Way
Speaker Size	5.25"
Impedance	4 Ohm
Frequency Range	40 Hz to 450 Hz
Dimension	255 x 320 x 255 (WXHxD)
Weight	4.4 Kg
Speaker	1 Way, 2 Speakers
Speaker Size	3"
Impedance	4 Ohm
Frequency Range	150 Hz to 15 KHz
Dimension	715 x 110 x 92 (WXHxD)
Weight	3.7 Kg
USB	
Class Support	UMS (USB Mass Storage Class)
Capacity	upto 16 GB
Playbility	MP3 Track

* Specification subject to change without prior notice.
Measured under specific conditions.

Warranty

This Philips Sound Bar is warranted against any defect due to defective materials or workmanship for 12 months from the date of purchase. Should a defect develop during the period of warranty, **Gibson Innovations India Private Limited** undertake to repair the apparatus FREE OF CHARGE through the dealer from whom it has been purchased or at any of the Philips Authorised Service Centres.

The warranty is not valid in case :

1. Proof of purchase is not accompanied with this warranty card.
2. The warranty card is not completed immediately after purchase.
3. The apparatus is not used according to this manual.
4. Defects are caused by improper or reckless use.
5. Any repairs are done by persons other than Philips Authorised service centre.
7. The serial number is tampered with.
8. Defects due to causes beyond control like lightning, abnormal voltage, acts of God or while in transit to the purchaser's residence.

All consumables and parts susceptible to normal wear and tear are not covered under warranty.

Please fill the following for your reference and warranty validity:-

Week/S. No. _____ Bill No. _____

Date of Purchase: _____

Dealer's name: _____

Dealers Stamp: _____

Customer's name & address: _____

Model No.: _____

Dealer's Signature: _____

Gibson Innovations India Private Limited,
4th Floor, Block-I, Vatika Business Park, Sec-49, Sohna Road, Gurgaon-122018,
Haryana, India

The Philips trademark and Philips shield emblem are registered trademarks of Koninklijke Philips N.V. used under license.

This product has been manufactured by and sold under the responsibility of Gibson Innovation India Private Ltd. and Gibson Innovations India Private Ltd. is the warrantor in relation to this product.

Question?
Contact
Philips

Always there to help you

Visit us at www.india.philips.com
Contact at: 1860 180 1111, 1800 102 2929
Or customecare.india@philips.com



HTLI04I

www.philips.com