

Always there to help you

Register your product and get support at
www.philips.com/welcome



AZ1068



User manual

PHILIPS

Contents

1	Important	2
	Safety	2

2	Your CD Soundmachine	3
	Introduction	3
	What's in the box	3
	Overview of the main unit	4

3	Get started	5
	Install batteries	5
	Connect AC power	6
	Turn on	6

4	Use your CD Soundmachine	7
	Play CD	7
	Play from USB	7
	Play from SD card	8
	Listen to radio	8
	Use your microphone	8
	Program tracks	9
	Control play	9

5	Product information	10
	Specifications	10
	Supported MP3 disc formats	10
	USB playability information	10

6	Troubleshooting	11
----------	------------------------	-----------

7	Notice	12
----------	---------------	-----------

1 Important

Safety



This 'bolt of lightning' indicates uninsulated material within the device may cause an electrical shock. For the safety of everyone in your household, please do not remove the covering.

The 'exclamation mark' calls attention to features for which you should read the enclosed literature closely to prevent operating and maintenance problems.

WARNING: To reduce the risk of fire or electric shock, the device should not be exposed to rain or moisture and objects filled with liquids, such as vases, should not be placed on the device.

CAUTION: To prevent electric shock, fully insert the plug. (For regions with polarized plugs: To prevent electric shock, match wide blade to wide slot.)

Important Safety Instructions

- Follow all instructions.
- Heed all warnings.
- Do not use this apparatus near water.
- Clean only with dry cloth.
- Do not block any ventilation openings. Install in accordance with the manufacturer's instructions.
- Do not install near any heat sources such as radiators, heat registers, stoves, or other device (including amplifiers) that produce heat.
- Protect the power cord from being walked on or pinched, particularly at plugs, convenience receptacles, and the point where they exit from the device.
- Only use attachments/accessories specified by the manufacturer.
- Use only with the cart, stand, tripod, bracket, or table specified by the manufacturer or sold with the device. When a cart is used, use caution when moving the cart/device combination to avoid injury from tip-over.



- Unplug this device during lightning storms or when unused for long periods of time.
- Refer all servicing to qualified service personnel. Servicing is required when the device has been damaged in any way, such as power-supply cord or plug is damaged, liquid has been spilled or objects have fallen into the device, the device has been exposed to rain or moisture, does not operate normally, or has been dropped.
- Battery usage CAUTION – To prevent battery leakage which may result in bodily injury, property damage, or damage to the device:
 - Do not mix batteries (old and new or carbon and alkaline, etc.).
 - Install batteries correctly, + and - as marked on the device.
 - The batteries shall not be exposed to excessive heat such as sunshine, fire or the like.
 - Remove batteries when the device is not used for a long time.
- Device shall not be exposed to dripping or splashing.
- Do not place any sources of danger on the device (e.g. liquid filled objects, lighted candles).

- Where the MAINS plug or an appliance coupler is used as the disconnect device, the disconnect device shall remain readily operable.



Warning

- Never remove the casing of this device.
- Never lubricate any part of this device.
- Never place this device on other electrical equipment.
- Keep this device away from direct sunlight, naked flames or heat.
- Never look into the laser beam inside this device.
- Ensure that you always have easy access to the power cord, plug, or adaptor to disconnect this device from the power.

2 Your CD Soundmachine

Congratulations on your purchase, and welcome to Philips! To fully benefit from the support that Philips offers, register your product at www.philips.com/welcome.

Introduction

With this unit, you can:

- enjoy audio from discs, USB/SD storage devices;
- enjoy Karaoke by connecting a microphone;
- listen to FM radio stations.

The unit supports these media formats:

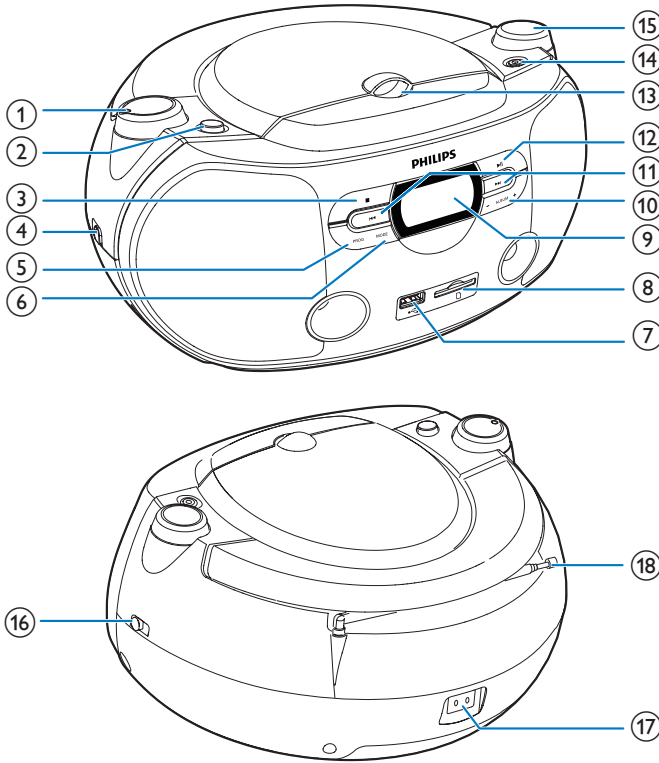


What's in the box

Check and identify the contents of the package:

- Main unit (without battery)
- Power cord
- User Manual

Overview of the main unit



① VOLUME

- Adjust volume.

② MICVOL

- For a low sensitivity microphone, button up to increase microphone loudness
- For a high sensitivity microphone, button up to avoid echo noise.

③ ■

- Stop play.
- Erase a program.

④ CD•USB/SD•FM•OFF

- Select a source: CD, USB, SD, or FM.
- Turn off the unit.

⑤ PROG

- For CD/USB/SD: program the play sequence of tracks.

⑥ MODE

- Select repeat or shuffle play mode.

⑦

- USB socket.

⑧ SD

- SD card slot.

⑨ Display panel

- Show display information.

⑩ -ALBUM+

- Skip to previous or next album in CD/USB/SD card with MP3 folder.

- ⑪ **⏮ / ⏭**
 - Skip to previous or next track.
 - Search within a track.
- ⑫ **⏸**
 - Pause or resume play.
- ⑬ **LIFT TO OPEN**
 - Open or close the disc compartment.
- ⑭ **MIC IN**
 - Socket for connecting a microphone.
- ⑮ **TUNING**
 - Tune to FM radio stations.
- ⑯ **USB•SD**
 - Select USB or SD source.
- ⑰ **AC MAINS~**
 - Power supply socket.
- ⑱ **FM antenna**
 - Adjust FM reception.

3 Get started



Caution

- Use of controls or adjustments or performance of procedures other than herein may result in hazardous radiation exposure or other unsafe operation.

Always follow the instructions in this chapter in sequence.

If you contact Philips, you will be asked for the model and serial number of this apparatus. The model number and serial number are on the bottom of the apparatus. Write the numbers here:

Model No. _____

Serial No. _____

Install batteries

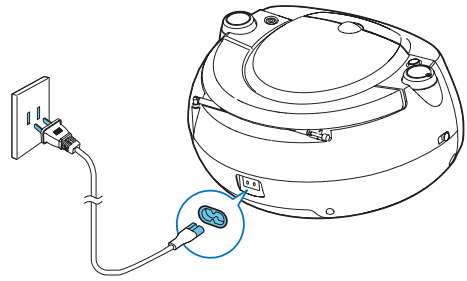
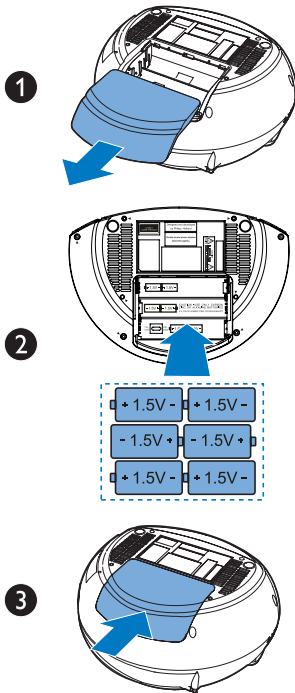


Note

- You can use both batteries and AC power as power supply of this device.

- 1 Open the battery compartment.
- 2 Insert 6 × 1.5 V R14/UM2/C CELL batteries (not supplied) with correct polarity (+/-) as indicated.

3 Close the battery compartment.



Turn on

After connected to power, the device switches to the last selected source automatically.



Tip

- Switch the source selector to **OFF** and disconnect the power plug from the wall outlet after use to save energy.

Connect AC power



Caution

- Risk of product damage! Ensure that the power supply voltage corresponds to the voltage printed on the back or the underside of the unit.
- Risk of electric shock! When you unplug the AC adaptor, always pull the plug from the socket. Never pull the cord.
- Before you connect the AC power cord, make sure that you have completed all other connections.

4 Use your CD Soundmachine

Play CD

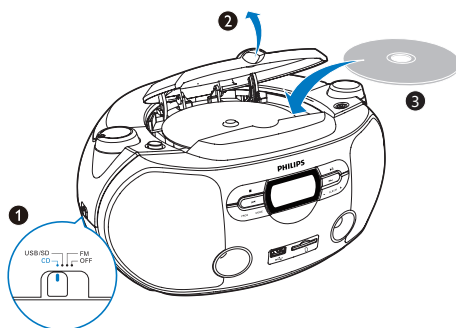
Note

- You cannot play CDs encoded with copyright protection technologies.

You can play commercially available audio CDs:

- CD-Recordables (CD-R)
- CD-Rewritables (CD-RW)
- MP3-CDs

- 1 Switch the source selector to **CD**.
↳ [cd] is display.
 - 2 Lift to open the lid of the CD compartment.
 - 3 Insert a CD with the printed side facing up, and close the CD lid.
↳ The total number of tracks are displayed.
↳ Play starts automatically. If not, press ►||.
- To select a track, press ◀◀ / ▶▶.
 - To pause CD play, press ►||.
↳ [▶] flashes.
 - To resume CD play, press ►|| again.
 - To stop CD play, press ■.

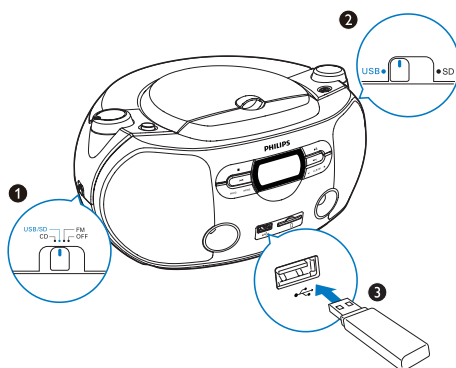


Play from USB

Note

- Make sure that the USB device contains playable audio contents for supported formats.
- The USB terminal can be loaded with 500 mA.

- 1 Switch the source selector to **USB/SD**.
- 2 Switch the **USB/CD** selector to **USB**.
- 3 Insert a USB storage device into the USB socket.
↳ [uSb] is displayed.
↳ Play starts automatically. If not, press ►||.

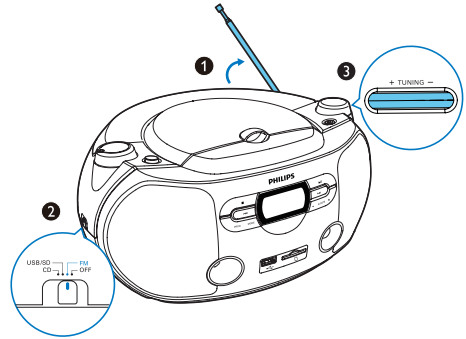
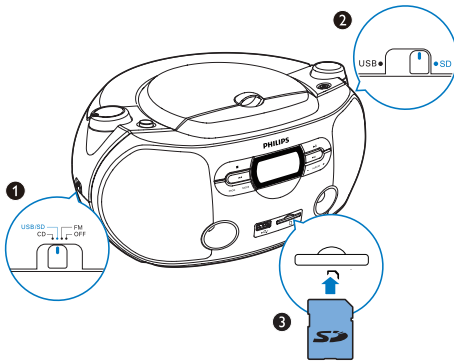


Play from SD card

Note

- Make sure that the USB device contains playable audio contents for supported formats.

- Switch the source selector to **USB/SD**.
- Switch the **USB/SD** selector to **SD**.
- Insert an SD card into the SD slot.
 ↳ **[Sd]** is displayed.
 ↳ Play starts automatically. If not, press **▶II**.



Note

- No information is displayed in FM mode.

Use your microphone

You can connect a microphone (not supplied) to sing along with a music source.

Note

- Before you connect a microphone, set the microphone volume to the minimum to prevent howling.

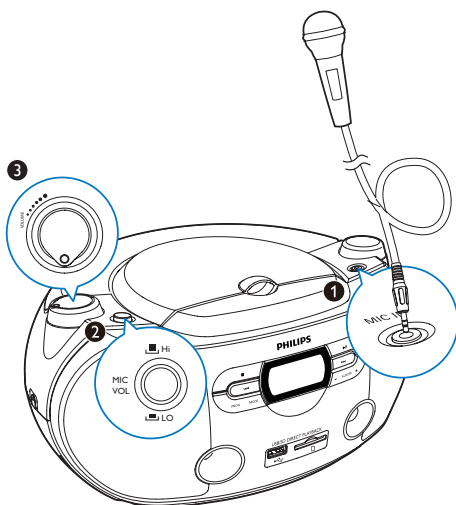
Listen to radio

Tip

- Position the antenna as far as possible from TV, VCR, or other radiation source.

- Fully extend and adjust the position of the antenna for optimal reception.
- Switch the source selector to **FM**.
- Rotate **TUNING +/-** until you find optimal reception.
- Repeat step 3 to tune to more stations.

- Connect a microphone to the **MIC IN** socket.
- Press **MIC VOL** up or down due to microphone sensitivity (see the microphone user manual for microphone sensitivity).
 - When use a low sensitivity microphone, press **MIC VOL** up to **HI** to increase microphone loudness.
 - When use a high sensitivity microphone, press **MIC VOL** down to **LO** to avoid echo noise.
- Rotate **VOLUME** to adjust microphone input volume.
- Speak or sing through the microphone.



Tip

- To avoid echo noise, disconnect the microphone, or turn off the microphone, or put the microphone away from the device if not use it.
- Different microphones may have different sound quality due to sensitivity.

Program tracks

In CD/USB/SD mode, you can program a maximum of 20 tracks.

- 1 Press **■** to stop play, and press **PROG** to activate the program mode.
↳ **[PROG]** (program) starts to blink.
- 2 For MP3 tracks, press **ALBUM +/-** to select an album.
- 3 Press **◀▶** to select a track number, and then press **PROG** to confirm.
- 4 Repeat step 3 to program more tracks.
- 5 Press **▶||** to play the programmed tracks.
↳ During play, **[PROG]** (program) is displayed.
 - To erase the program, at the stop position, press **■**.

Control play

VOLUME	Rotate to adjust volume.
■	Stop play.
▶ 	Pause or resume play.
◀▶	Press to select previous/next track. Press and hold to fast backward/forward in a track.
PROG	In CD/USB/SD mode, program tracks.
MODE	Select a play mode. [◀] (repeat): Repeat a track. [◀ ALB] (repeat album): Repeat an album. [◀ ALL] (repeat all): Repeat an entire CD/program. [◀] (shuffle): Play tracks randomly. To return to normal play, press MODE repeatedly until the repeat icons disappear.
-ALBUM+	Select previous/next album.

Tip

- When search reaches the end of the last track, the CD stops.
- Shuffle play cannot be selected when you play programmed tracks.

5 Product information

Note

- Product information is subject to change without prior notice.

Specifications

Amplifier

Total Output Power	5 W
Frequency Response	125 -16000 Hz, -3dB
Signal to Noise Ratio	>55 dBA
Total Harmonic Distortion	<1 %

Disc

Laser Type	Semiconductor
Disc Diameter	12 cm/8 cm
Support Disc	CD-DA, CD-R, CD-RW, MP3-CD
Audio DAC	24 Bits / 44.1 kHz
Total Harmonic Distortion	<1% (1 kHz)
Frequency Response	60 Hz - 16 kHz; ±3 dB
S/N Ratio	>55 dBA

USB

USB Direct Version	USB 1.1 or 2.0
USB 5 V Power	≤500 mA

Tuner

Tuning Range	FM: 87.5-108 MHz
Total Harmonic Distortion	<3%
Signal to Noise Ratio	>50 dBA

General information

Power Supply:	
- AC Power	220 V~, 50 Hz;
- Battery	6 × 1.5 V R14/UM2/C CELL batteries
Operation Power Consumption	16 W
Dimensions	
- Main unit (W × H × D)	291 × 142 × 243 mm
Weight - main unit	1.7 kg

Supported MP3 disc formats

- ISO9660, Joliet
- Maximum title number: 999 (depending on file name length)
- Maximum album number: 99
- Supported sampling frequencies: 32 kHz, 44.1 kHz, 48 kHz
- Supported Bit-rates: 32~256 (kbps), variable bit rates

USB playability information

Compatible USB devices:

- USB flash memory (USB1.1 or 2.0)
- USB flash players (USB1.1 or 2.0)

Supported USB formats:

- USB or memory file format FAT12, FAT16, FAT32 (sector size: 512 bytes)
- MP3 bit rate (data rate): 32-320 Kbps and variable bit rate
- Directory nesting up to a maximum of 8 levels

- Number of albums/ folders: maximum 99
- Number of tracks/titles: maximum 999
- File name in Unicode UTF8 (maximum length: 16 bytes)

Unsupported USB formats:

- Empty albums: an empty album is an album that does not contain MP3 files, and is not shown in the display.
- Unsupported file formats are skipped. For example, Word documents (.doc) or MP3 files with extension .dlf are ignored and not played.
- AAC, WAV, PCM audio files

6 Troubleshooting



Warning

- Never remove the casing of this device.

To keep the warranty valid, never try to repair the system yourself.

If you encounter problems when using this device, check the following points before requesting service. If the problem remains unsolved, go to the Philips Web page (www.philips.com/support). When you contact Philips, make sure that the device is nearby and the model number and serial number are available.

No power

- Make sure that the AC power plug of the unit is connected properly.
- Make sure that there is power at the AC outlet.
- Insert the batteries with polarities (+/- signs) aligned as indicated.
- Replace the battery.

No sound

- Adjust volume.
- Make sure that the track played is of a compatible format.
- Make sure that **MUSIC** is selected when play CD/USB/SD card, and **SPEECH** is selected when use microphone.

Cannot play disc

- Make sure that the disc is inserted with the printed side facing up.
- Wipe the disc with fibre cleaning cloth from the centre to the edge in a straight line.
- This disc may be defective. Play another disc.
- Make sure that the CD is a finalized CD/CD-R/CD-RW.
- Make sure that the laser lens is clean.
- Make sure that the CD is not encoded with copyright protection technologies.

USB device or SD card not supported

- The USB device or SD card is not compatible with this device. Try another one.

Poor radio reception

- Increase the distance between the unit and your TV or VCR.
- Fully extend the FM antenna.

7 Notice

Any changes or modifications made to this device that are not expressly approved by Philips Consumer Lifestyle may void the user's authority to operate the equipment.

Your product is designed and manufactured with high quality materials and components, which can be recycled and reused.

Never dispose of your product with other household waste. Please inform yourself about the local rules on the separate collection of electrical and electronic products and batteries. The correct disposal of these products helps prevent potentially negative consequences on the environment and human health.

Your product contains batteries, which cannot be disposed of with normal household waste. Please inform yourself about the local rules on separate collection of batteries. The correct disposal of batteries helps prevent potentially negative consequences on the environment and human health.

Please visit www.recycle.philips.com for additional information on a recycling center in your area.

Environmental information

All unnecessary packaging has been omitted. We have tried to make the packaging easy to separate into three materials: cardboard (box), polystyrene foam (buffer) and polyethylene (bags, protective foam sheet.)

Your system consists of materials which can be recycled and reused if disassembled by a specialized company. Please observe the local regulations regarding the disposal of packaging materials, exhausted batteries and old equipment.



**Be responsible
Respect copyrights**

The making of unauthorized copies of copy-protected material, including computer programs, files, broadcasts and sound

recordings, may be an infringement of copyrights and constitute a criminal offence. This equipment should not be used for such purposes.

This apparatus includes these labels:



Class II equipment symbol



This symbol indicates that the apparatus has a double insulation system.



Note

- The type plate is located on the bottom of the device.

部件名称 Name of the Parts	有毒有害物质或元素 Hazardous/toxic Substance					
	铅 (Pb, Lead)	汞 (Hg, Mercury)	镉 (Cd, cadmium)	六价铬(Chromium 6+)	多溴联苯 (PBB)	多溴二苯醚 (PBDE)
Housing 外壳	O	O	O	O	O	O
Loudspeakers 喇叭单元	O	O	O	O	O	O
PWBs 电路板组件	X	O	O	O	O	O
Accessories (Remote control & cables) 附件（遥控器，电源线，连接线）	X	O	O	O	O	O

○：表示该有毒有害物质在该部件所有均质材料中的含量均在SJ/T11363 - 2006 标准规定的限量要求以下。
O: Indicates that this toxic or hazardous substance contained in all of the homogeneous materials for this part is below the limit requirement in SJ/T11363 – 2006.

×：表示该有毒有害物质至少在该部件的某一均质材料中的含量超出SJ/T11363 – 2006 标准规定的限量要求。
X: Indicates that this toxic or hazardous substance contained in at least one of the homogeneous materials used for this part is above the limit requirement in SJ/T11363 - 2006.



环保使用期限 Environmental Protection Use Period

This logo refers to the period (10 years)

电子信息产品中含有的有毒有害物质或元素在正常使用的条件下不会发生外泄或突变，电子信息产品用户使用该电子信息产品不会对环境造成严重污染或对其人身、财产造成严重 损害的期限。

This logo refers to the period (10 years) during which the toxic or hazardous substances or elements contained in electronic information products will not leak or mutate so that the use of these [substances or elements] will not result in any severe environmental pollution, any bodily injury or damage to any assets.



Specifications are subject to change without notice
© 2013 Koninklijke Philips Electronics N.V.
All rights reserved.

AZ1068_93_UM_V1.0

