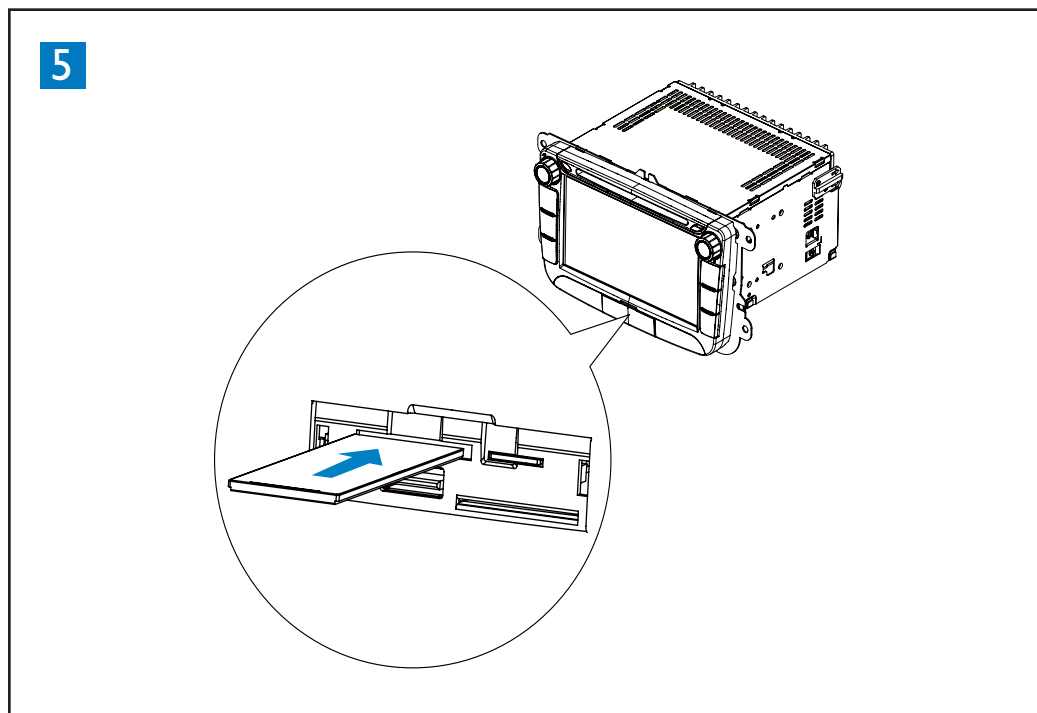
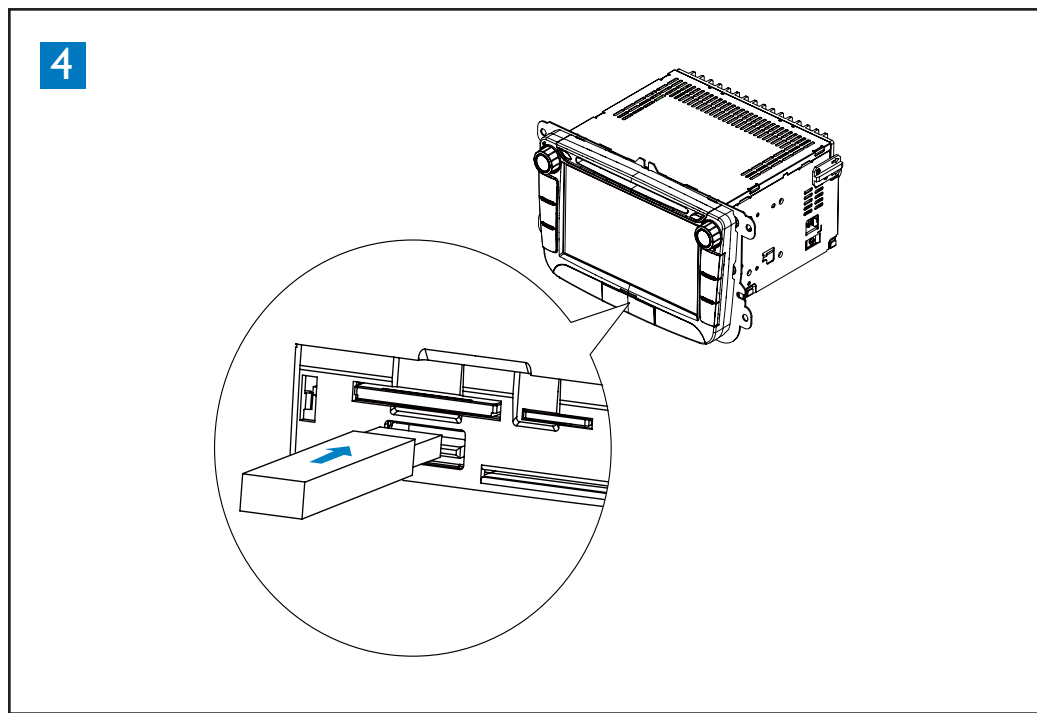
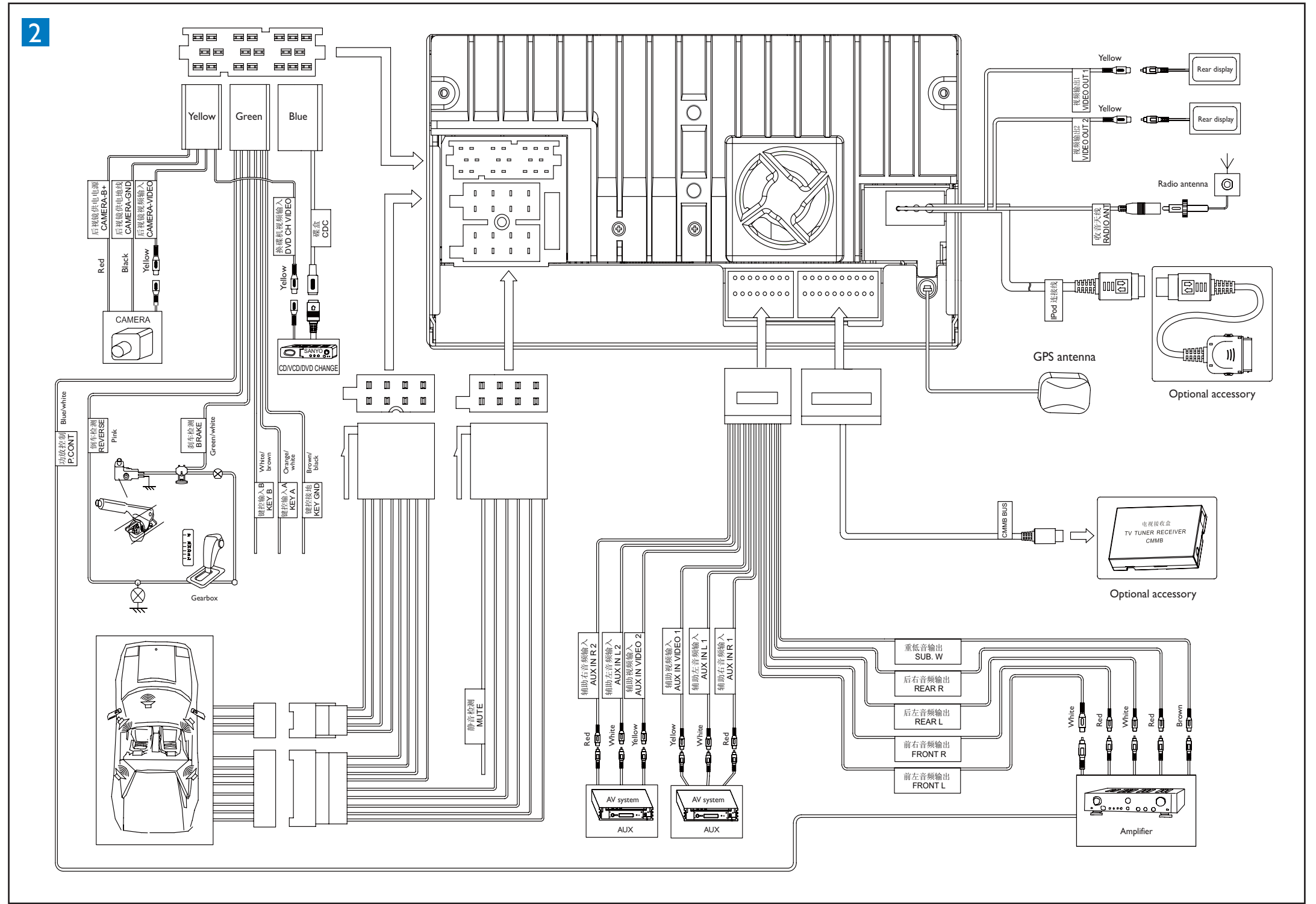
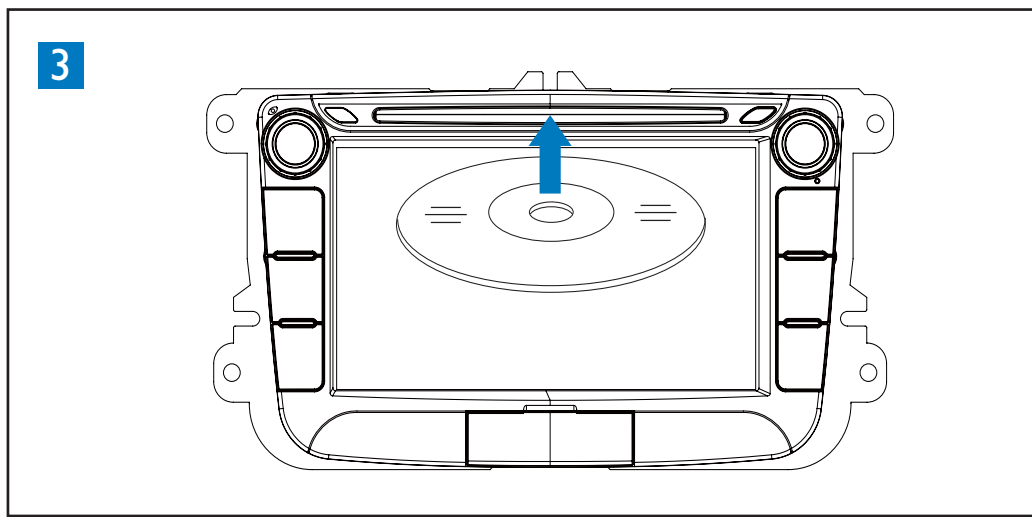
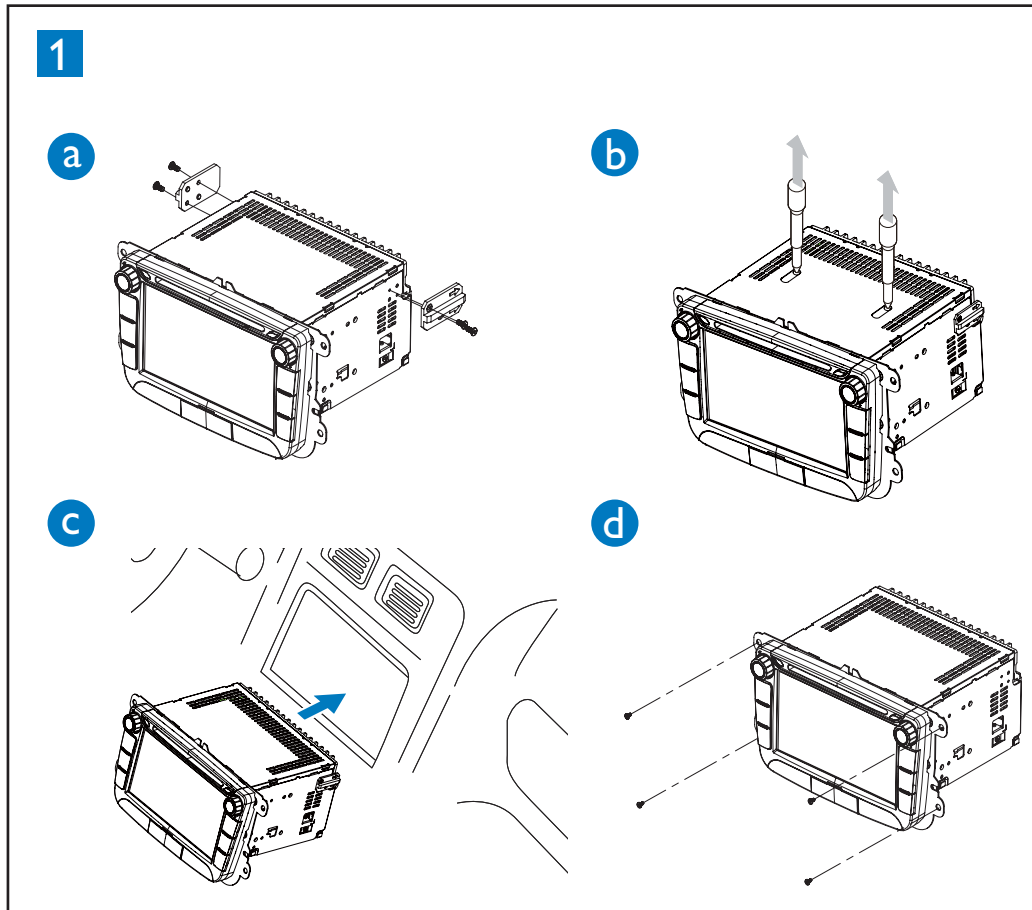




PHILIPS



English

Install the car audio 1

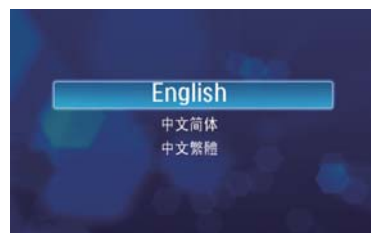
- If the car does not have an on-board drive or navigation computer, disconnect the negative terminal of the car battery.
- Take out the original car audio and keep the screws.
- Mount the supplied mounting brackets onto the unit with the supplied screws.
- Connect wires 2.
- Take off the two screws on the top side of the unit.
- Slide the unit into the dashboard until a click sound is heard.
- Fix the unit onto the dashboard with screws.
- Reconnect the negative terminal of the car battery.

Turn on

! Caution

- Risk of road accidents! Never watch video or adjust settings while you drive.

- Press ϕ to turn on the unit.
 - The available OSD (On-Screen Display) languages are displayed.



- Tap a language.
 - The OSD language is changed to the selected language immediately.

- To turn off the unit, press ϕ for 3 seconds.

Set date and time

- Press MENU.
 - The main menu is displayed.



- Tap [Settings].
- Tap [Time].
 - The date/time setup menu is displayed.



Set date

- Tap [Date].
- Tap the displayed date information.
 - A submenu is displayed.
- Tap \blacktriangle or \blacktriangledown to set year, month and day.

Set time mode

- Tap [Time Mode].
- Tap [12H] or [24H] to select clock mode.

Set time

- Tap [Time].
- Tap the displayed time.
 - A submenu is displayed.
- Tap \blacktriangle or \blacktriangledown to set hour and minute.

Adjust screen

To turn off the screen

- Press DISP for over 2 seconds.

To adjust screen brightness

- Press DISP.
- Rotate TUNE/SELECT to adjust the value.

Use map

Note

- You may need to upgrade the map (sold separately) before using it (see "Upgrade the map" section).

- Tap the upper left corner to display home menu.
- Tap [Navigation].
 - The navigation menu is displayed in a few seconds.
- Refer to the map manual to operate the navigation tool.

Listen to Radio

- Tap \blacktriangle to display home menu.
- Tap [Radio].
 - Band and frequency information is displayed.



- Tap on FM or AM to select band:
- Briefly tap \blacktriangle or \blacktriangledown to tune to a radio station by step.

Play disc 3

You can play video, audio or images stored on the following discs:

- DVD video, DVD-R, DVD-RW
- VCD
- Audio CD, CD-R, CD-RW

- Insert the disc into the disc slot with label side facing up.
 - Play starts automatically.
 - To remove the disc, press the \blacktriangle button.

Connect USB device 4

- Open the USB/SD card door.
- Insert the USB device to the USB socket.
 - Play starts automatically.

Note

- To remove the USB device, switch to disc, radio or other source first.

Insert SD/MMC card 5

- Open the USB/SD card door.
- Insert the SD/MMC card into the SD/MMC card slot.
 - Play starts automatically.

Remove the SD/MMC card

- Switch to another source.
- Press the card until you hear a click sound.
 - The card is now disengaged.
- Remove the SD or MMC card.

Play with Bluetooth device

Pair the Bluetooth-enabled devices

To connect your Bluetooth device to the unit, you need to pair the device to the unit. Pairing needs only to be done once.

You can pair up to eight devices.

- Search for Bluetooth device with the device.
- Select "CID3289" in the pairing list.
- Enter default password "0000".
 - if pairing succeeds, phone call record is displayed.



Make a call

- Pair the phone with the unit.
- Tap \blacktriangle to display the home menu.
- Tap [Bluetooth].
 - The Bluetooth menu is displayed.



- Tap \blacktriangle or \blacktriangledown to select the paired phone, then tap \blacktriangle .
- Tap \blacktriangle or \blacktriangledown to search for phone number from the following list:

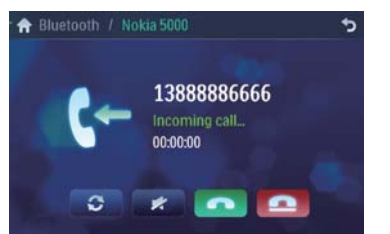


Or tap \blacktriangle to dial number directly, then tap \blacktriangle to dial.

Receive call

By default, all incoming calls are received automatically.

- If there is incoming call, [Incoming call...] flashes on the screen. Speak into the Bluetooth microphone.



- When conversation ends, tap \blacktriangle (red) to terminate the call.

