

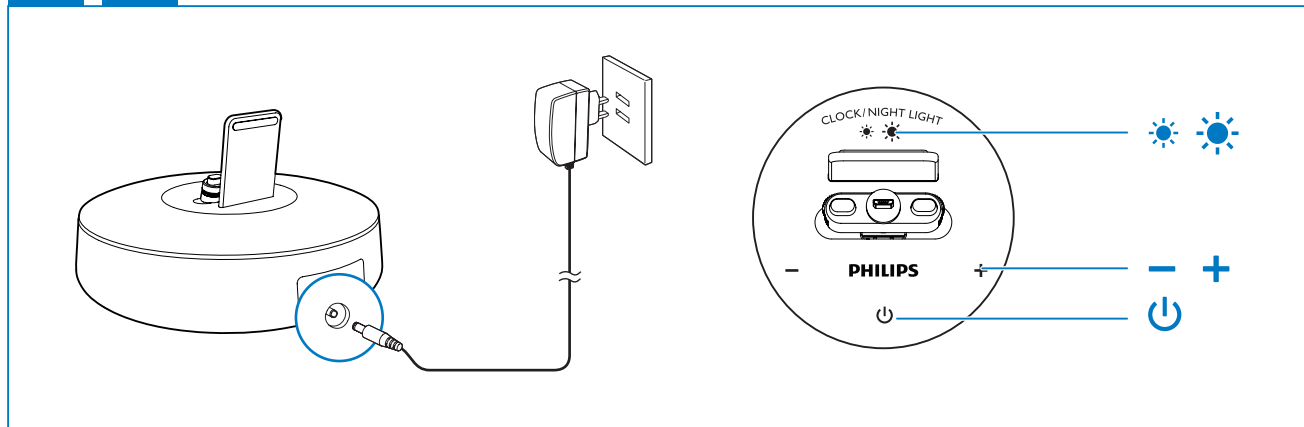
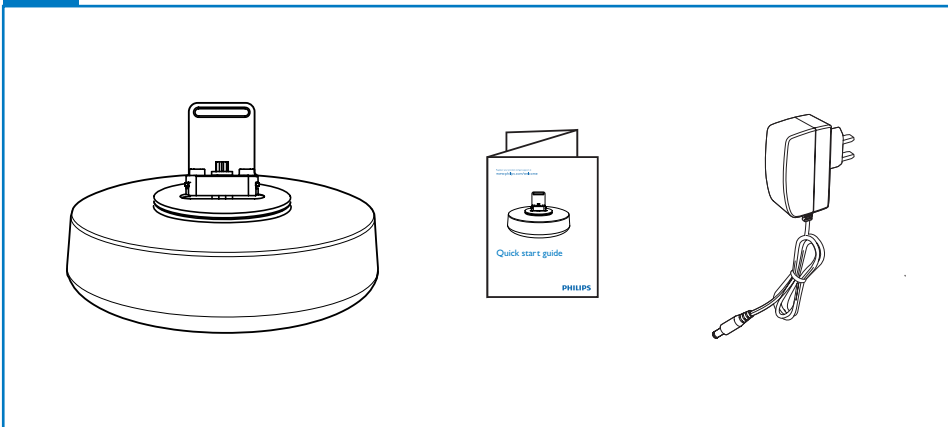


Quick start guide 快速启用指南

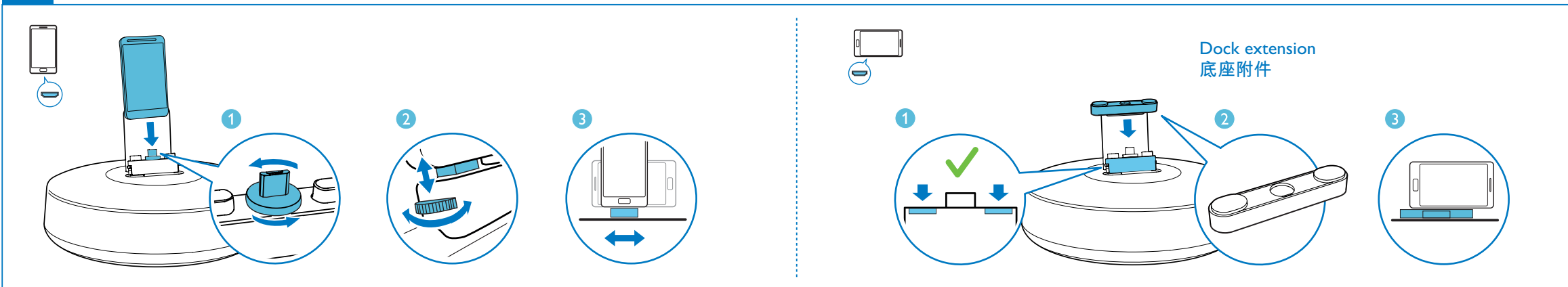
PHILIPS



- Before using your product, read all accompanying safety information.
使用产品之前，请先阅读所有随附的安全信息。
- System requirements:
For Android system (version 2.1 or above);
Bluetooth 2.1 or above;
Micro USB connector:
系统要求：
适用于 Android 系统（2.1 或更高版本）
蓝牙 2.1 或更高版本：
微型 USB 接口
- Note: If the micro USB connector is located at the top, screen auto-rotation is available for Android 2.3 or above. Visit www.philips.com/FlexiDock for more details.
注意：如果微型 USB 接口位于顶部，则屏幕自动旋转功能适用于 Android 2.3 或更高版本。有关详细信息，请访问 www.philips.com/FlexiDock。
- To download and install Songbird on your PC, visit www.philips.com/songbird
要在您的电脑上下载并安装 Songbird，请访问 www.philips.com/songbird
- To get the full user manual, visit www.philips.com/support
要获取完整的用户手册，请访问 www.philips.com/support

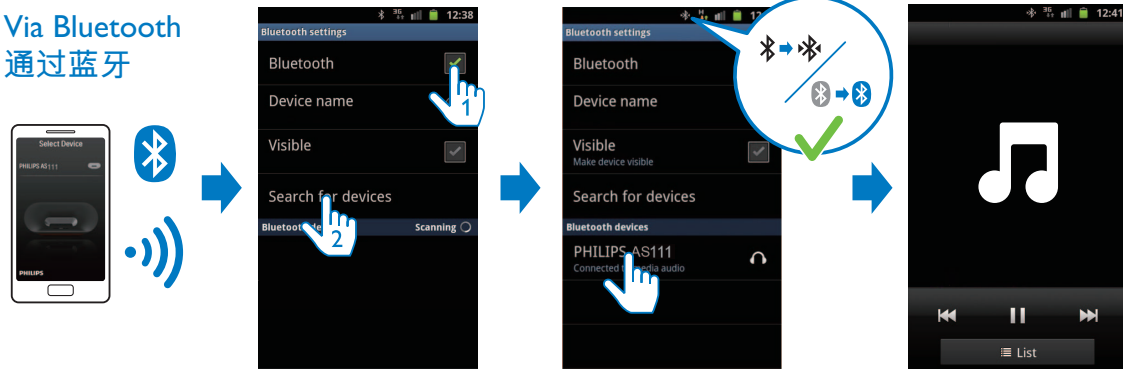


2 Dock and charge 连接和充电

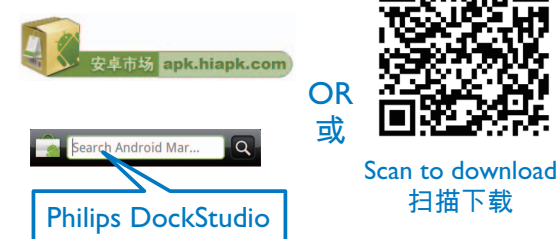


3 Play music 音乐播放

Via Bluetooth
通过蓝牙



Via free DockStudio app
通过免费 DockStudio
应用程序

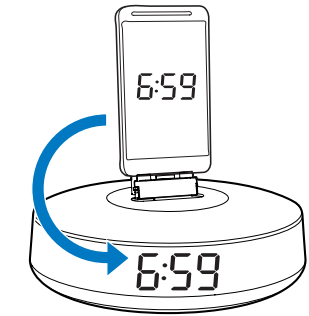


Option 选用 Install Songbird 安装 Songbird

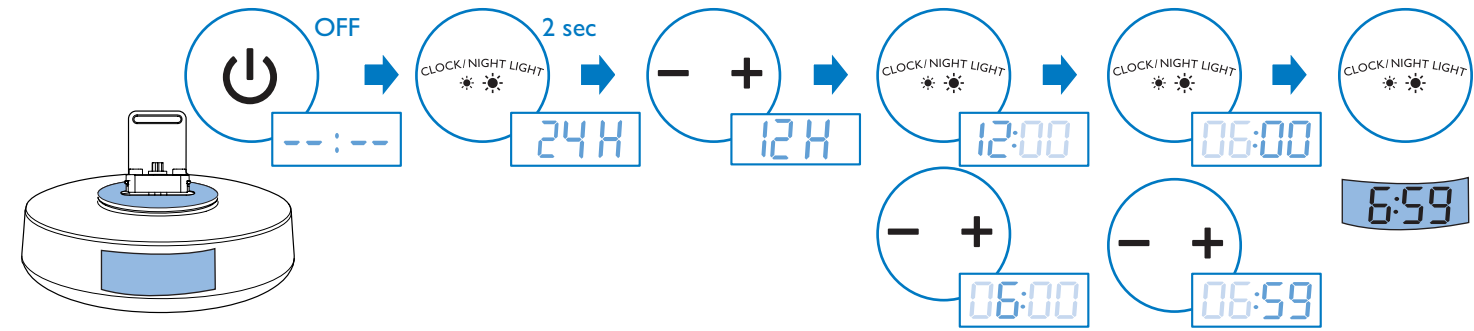


Set time 设置时间

Auto-time synchronization
自动同步时间



Press and hold for 2 seconds to set time
按住 两秒设置时间



EN

Safety

- Read these instructions.
- Keep these instructions.
- Heed all warnings.
- Follow all instructions.
- Do not use this apparatus near water.
- Clean only with dry cloth.
- Install in accordance with the manufacturer's instructions.
- Do not install near any heat sources such as radiators, heat registers, stoves, or other apparatus (including amplifiers) that produce heat.
- Protect the power cord from being walked on or pinched, particularly at plugs, convenience receptacles, and the point where they exit from the apparatus.
- Only use attachments/accessories specified by the manufacturer.
- Unplug this apparatus during lightning storms or when unused for long periods of time.
- Refer all servicing to qualified service personnel. Servicing is required when the apparatus has been damaged in any way, such as power-supply cord or plug is damaged, liquid has been spilled or objects have fallen into the apparatus, the apparatus has been exposed to rain or moisture, does not operate normally, or has been dropped.
- Apparatus shall not be exposed to dripping or splashing.
- Do not place any sources of danger on the apparatus (e.g. liquid filled objects, lighted candles).
- Where the plug of the Direct Plugin Adapter is used as the disconnect device, the disconnect device shall remain readily operable.

Warning

- Never remove the casing of this apparatus.
- Never lubricate any part of this apparatus.
- Never place this apparatus on other electrical equipment.

Notice

Any changes or modifications made to this device that are not expressly approved by Philips Consumer Lifestyle may void the user's authority to operate the equipment.

Disposal of your old product

Your product is designed and manufactured with high quality materials and components, which can be recycled and reused. Never dispose of your product with other household waste. Please inform yourself about the local rules on the separate collection of electrical and electronic products and batteries. The correct disposal of these products helps prevent potentially negative consequences on the environment and human health.

Please visit www.recycle.philips.com for additional information on a recycling center in your area.

Environmental information

All unnecessary packaging has been omitted. We have tried to make the packaging easy to separate into three materials: cardboard (box), polystyrene foam (buffer) and polyethylene (bags, protective foam sheet.) Your system consists of materials which can be recycled and reused if disassembled by a specialized company. Please observe the local regulations regarding the disposal of packaging materials, exhausted batteries and old equipment.

Note

- The type plate is located on the bottom of the apparatus.

Product information

Note

- Product information is subject to change without prior notice.

Specification

Amplifier	
Rated Output Power:	2X2 W
Signal to Noise Ratio:	75 dBA
General information	
AC power (power adaptor):	S018KC0590240 (Philips) Input: 100-240V~50/60Hz 500mA Output: 5.9V === 2400mA
Operation Power Consumption:	8W
Eco Standby Power Consumption:	<1W
Charging:	maximum 1A for micro USB
Dimensions - Main Unit (W x H x D):	171 X 102.6 X 171 mm
Weight - Main Unit:	0.605kg

简体中文

安全

- 阅读这些说明。
- 保留这些说明。
- 注意所有警告。
- 遵循所有说明。
- 不要在靠近水的地方使用本装置。
- 只能使用干布进行清洁。
- 按照制造商的说明进行安装。
- 不要在任何热源附近安装，如散热器、散热器、炉具或其它发热设备（包括功放器）。
- 防止电源线被踩踏或挤夹，特别是在插头、电源插座和设备电源线出口位置。
- 仅使用制造商指定的附件/配件。
- 在雷电天气期间或长期不用的情况下，请拔下本装置的电源插头。
- 所有维修均应由合格的维修人员来执行。 本装置有任何损坏时，如电源线或插头损坏，液体泼溅到或物体跌落到装置上，装置淋雨或受潮，无法正常运行，或者跌落，均需要进行维修。
- 切勿将本装置置于漏水或溅水环境下。
- 不要将任何危险源放在本装置上（例如装有液体的物体、点燃的蜡烛）。
- 如果将直插式适配器的插头用作断开设备，则断开设备应可以随时使用。
- 仅在海拔不超过 2000 米的区域使用本产品。



- 仅在非热带地区使用本产品。



警告

- 切勿拆下本产品的外壳。
- 切勿润滑本装置的任何部件。
- 切勿将本装置放在其它电器设备上面。

注意

如果用户未经 Philips 优质生活部门的明确许可而擅自对此设备进行更改或修改，则可能导致其无权操作此设备。

弃置旧产品

本产品采用可回收利用的高性能材料和组件制造而成。切勿将本产品与其它生活垃圾一起处理。请自行了解当地关于分类收集电子、电气产品及电池的规定。正确弃置这些产品有助于避免对环境和人体健康造成潜在的负面影响。关于您所在地区回收中心的更多信息，请访问 www.recycle.philips.com。

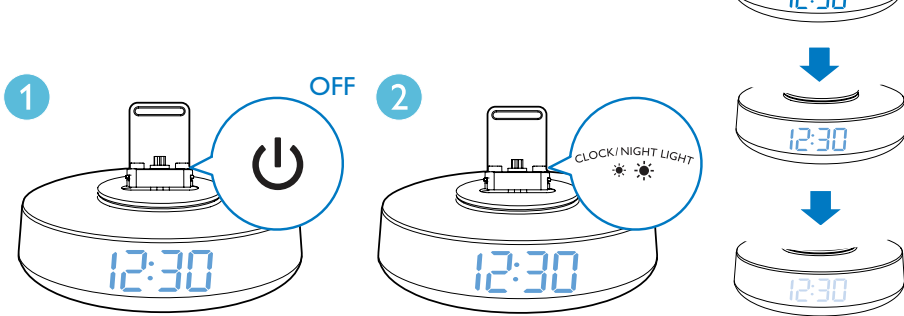
环境信息

已省去所有不必要的包装。 我们努力使包装易于分为三种材料：纸板（盒）、泡沫塑料（缓冲物）和聚乙烯（袋、保护性泡沫片）。

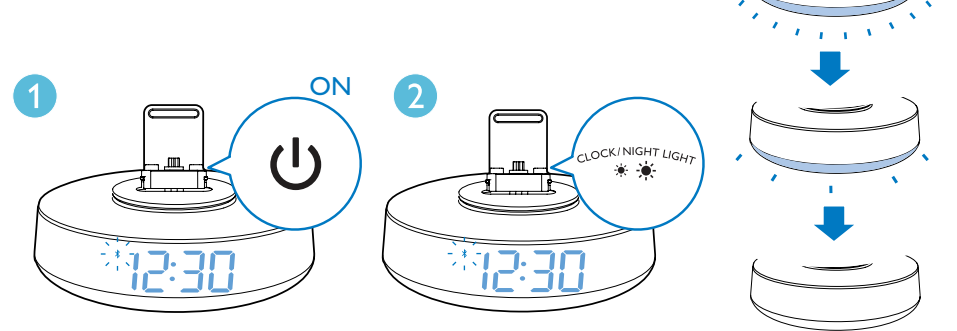
Adjust brightness 调节亮度

Press to adjust brightness of light. 按 调节亮度

For display panel
调节显示面板的亮度



For night light
调节夜光灯的亮度



您的系统包含可回收利用的材料（如果由专业公司拆卸）。 请遵守当地有关包装材料、废电池和旧设备的处理的规定。

注

- 型号铭牌位于本设备的底部。

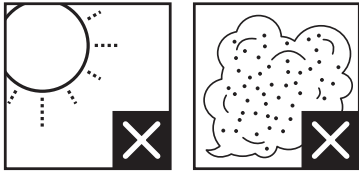
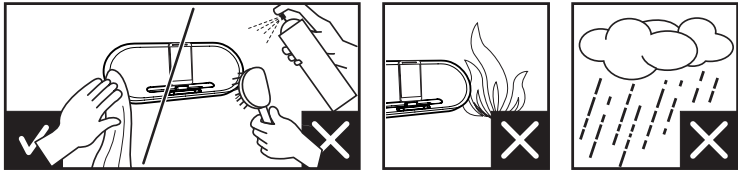
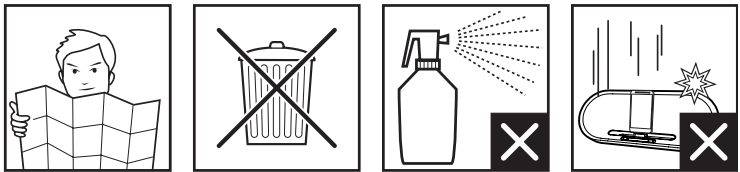
产品信息

注

- 产品信息如有更改，恕不另行通知。

规格

功放器	
额定输出功率:	2X2 瓦
信噪比:	75 dBA
一般信息	
交流电源 (电源适配器):	S018KC0590240 (飞利浦) 输入: 约 100-240 伏, 50/60 赫兹, 500 毫安 输出: 5.9 伏 === 2400 毫安
工作功耗:	8 瓦
环保节能待机功耗:	< 1 瓦
充电:	微型 USB 最大 1 安
尺寸 - 主装置 (宽 x 高 x 厚):	171 X 102.6 X 171 毫米
重量 - 主装置:	0.605 千克



部件名称 Name of the Parts	有毒有害物质或元素 Hazardous/toxic Substance					
	铅 (Pb, Lead)	汞 (Hg, Mercury)	镉 (Cd, cadmium)	六价铬 (Chromium 6+)	多溴联苯 (PBB)	多溴二苯醚 (PBDE)
Housing 外壳	O	O	O	O	O	O
LCD Panel 液晶面板	X	X	O	O	O	O
PWBs 电路板组件	X	O	O	O	O	O
Accessories (Remote control & cables) 附件（电源线， 连接线）	X	O	O	O	O	O

O：表示该有毒有害物质在该部件所有均质材料中的含量均在SJ/T11363 - 2006 标准规定的限量要求以下。
O: Indicates that this toxic or hazardous substance contained in all of the homogeneous materials for this part is below the limit requirement in SJ/T11363 – 2006.

X：表示该有毒有害物质至少在该部件的某一均质材料中的含量超出SJ/T11363 – 2006 标准规定的限量要求。
X: Indicates that this toxic or hazardous substance contained in at least one of the homogeneous materials used for this part is above the limit requirement in SJ/T11363 - 2006.



© 2012 Koninklijke Philips Electronics N.V.
All rights reserved.

AS111_QSG_93_V5.0

