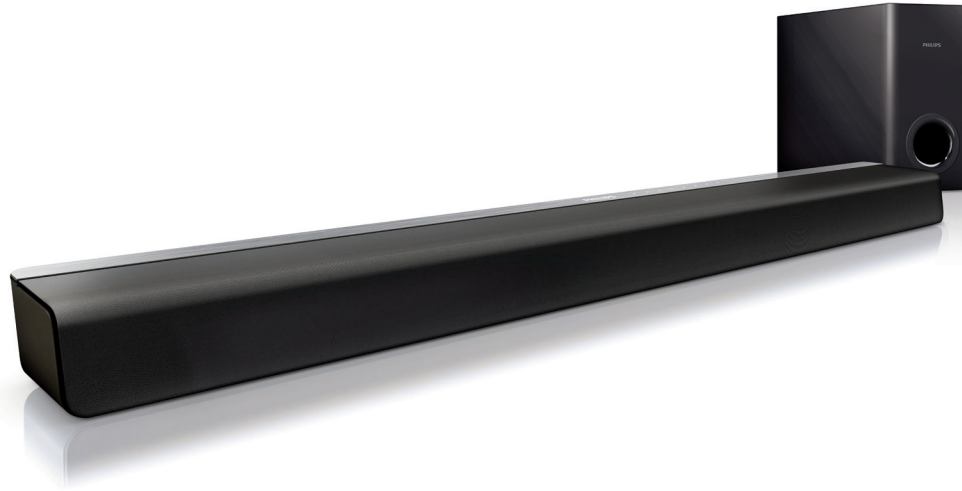


Always there to help you

Register your product and get support at
www.philips.com/support



CSS2133B



Quick start guide

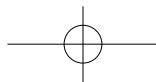
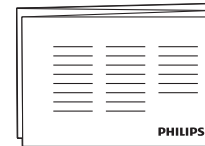
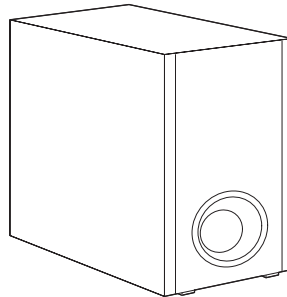
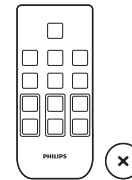
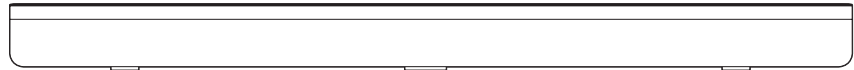
PHILIPS



EN Before using your product, read all accompanying safety information

MS-MY Sebelum menggunakan produk anda, baca semua maklumat keselamatan yang disertakan

TH ก่อนใช้งานผลิตภัณฑ์ของคุณ โปรดอ่านข้อมูลด้านความปลอดภัยที่มีให้โดยละเอียด



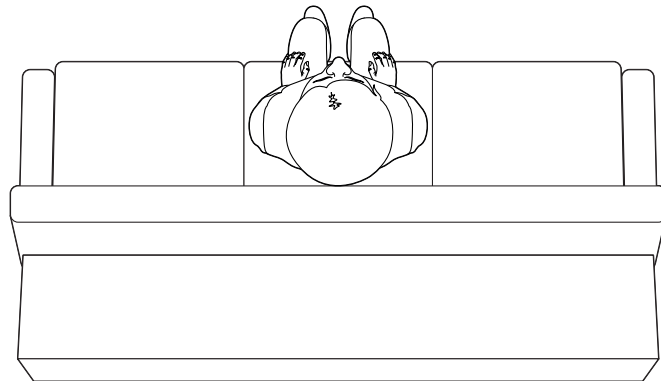
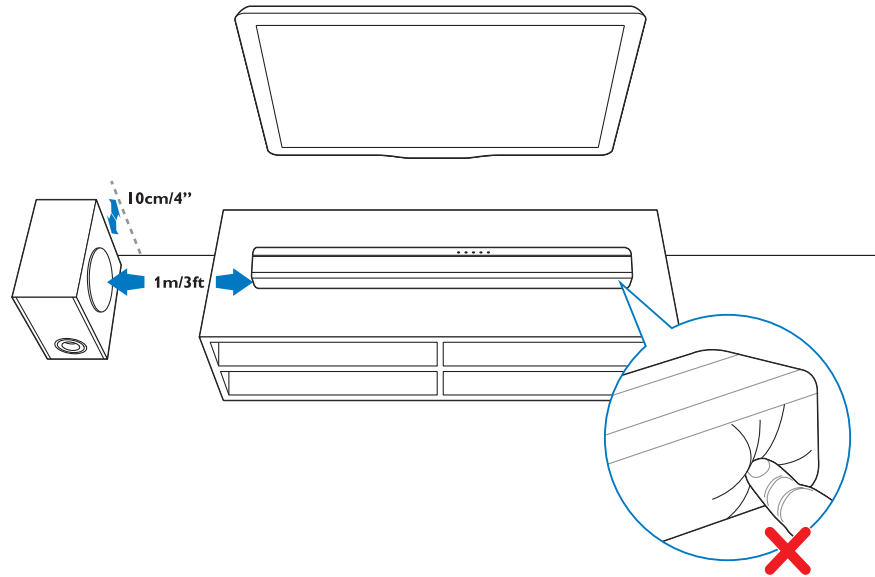


1

EN Position your product

MS-MY Letakkan kedudukan produk anda

TH จัดวางผลิตภัณฑ์ของคุณ



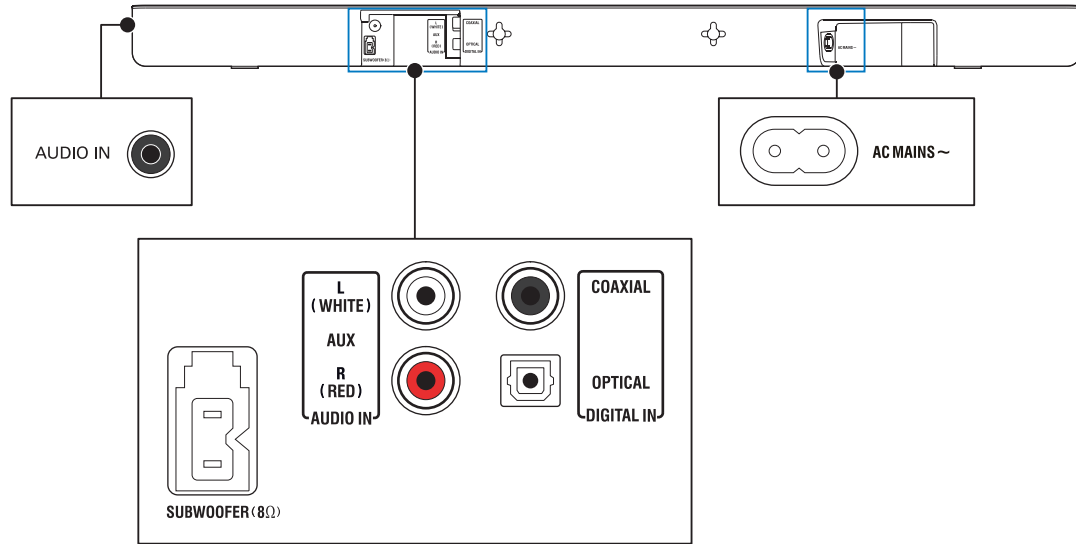


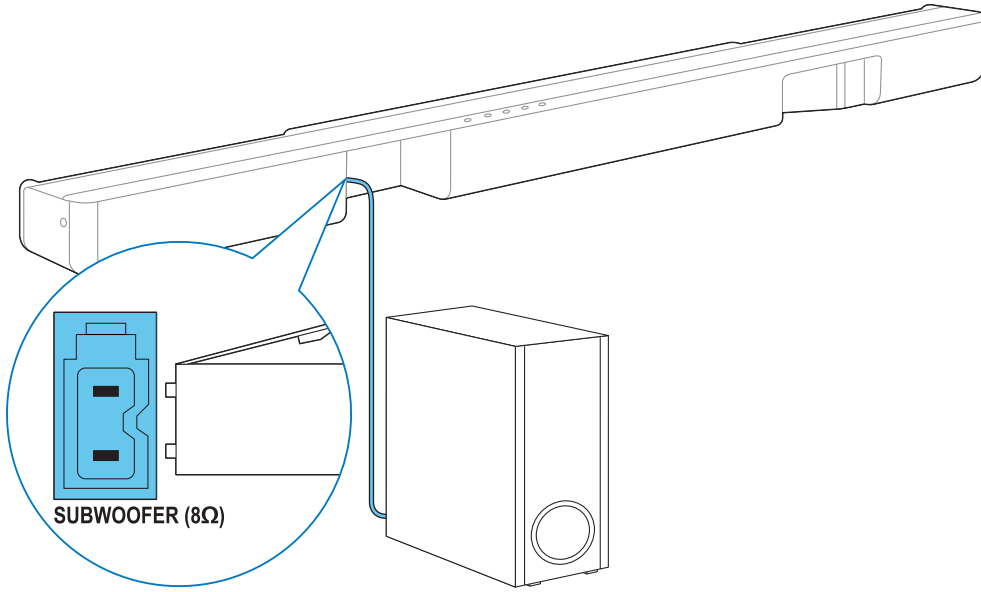
2

EN Connect your product

MS-MY Sambungkan produk anda

TH เชื่อมต่อผลิตภัณฑ์ของคุณ





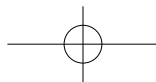
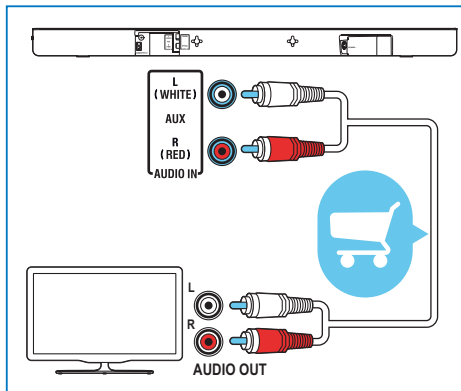
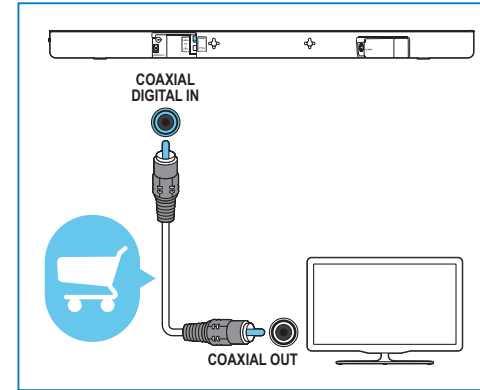
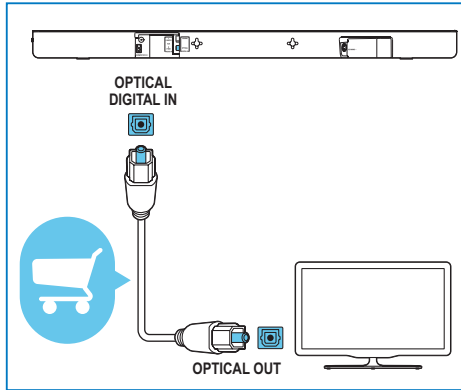


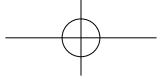
3

EN Connect to TV in one of these ways

MS-MY Sambung kepada TV dalam salah satu cara berikut

TH เชื่อมต่อทีวีด้วยวิธีใดวิธีหนึ่งดังนี้



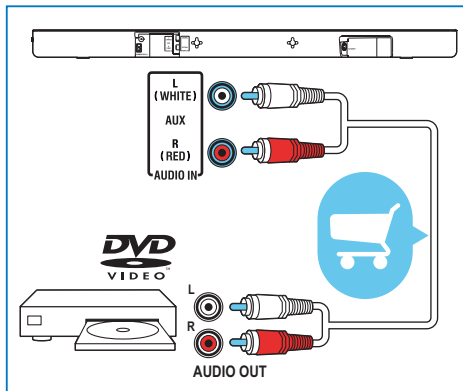
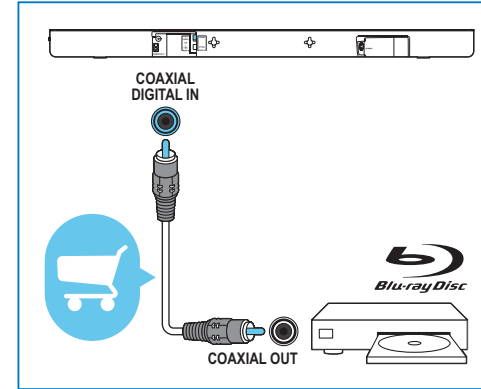
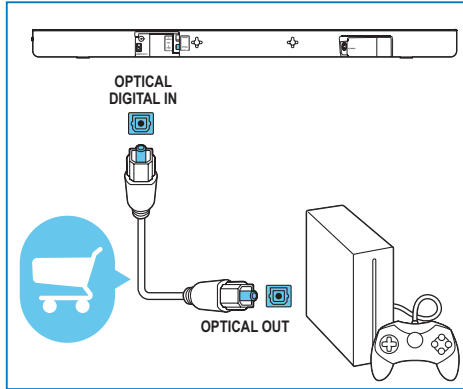


4

EN Connect to other devices in one of the following ways

MS-MY Sambungkan ke peranti lain dalam salah satu cara

TH เชื่อมต่อกับอุปกรณ์อื่นๆ ด้วยวิธีใดวิธีหนึ่งต่อไปนี้





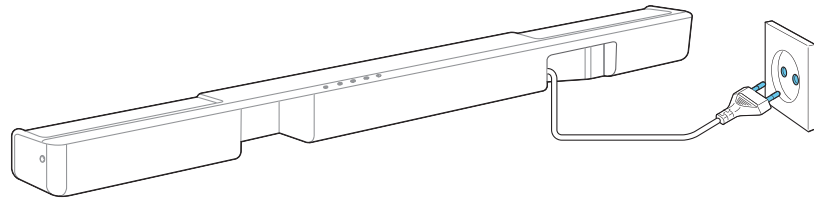
5

EN Switch on your product

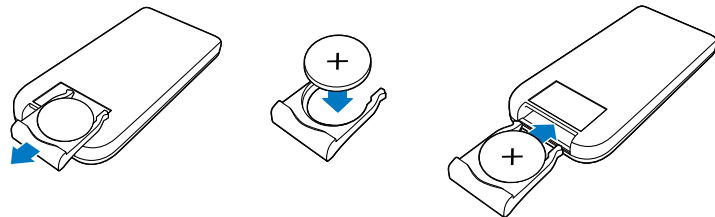
MS-MY Hidupkan produk anda

TH เปิดการทำงานผลิตภัณฑ์ของคุณ

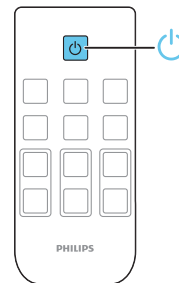
1



2



3

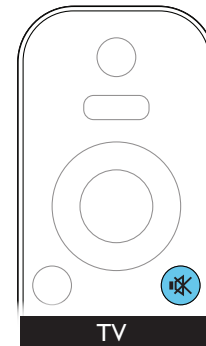
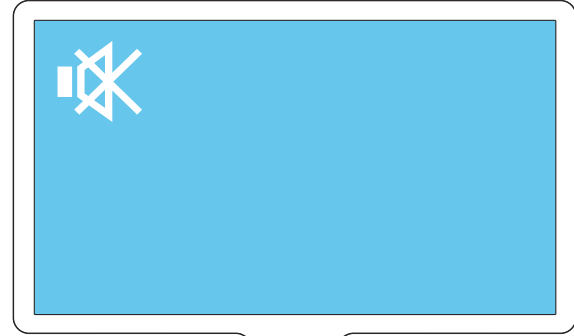




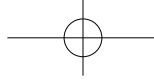
EN Mute your TV

MS-MY Redamkan TV anda

TH การปิดเสียงทีวีของคุณ



TV

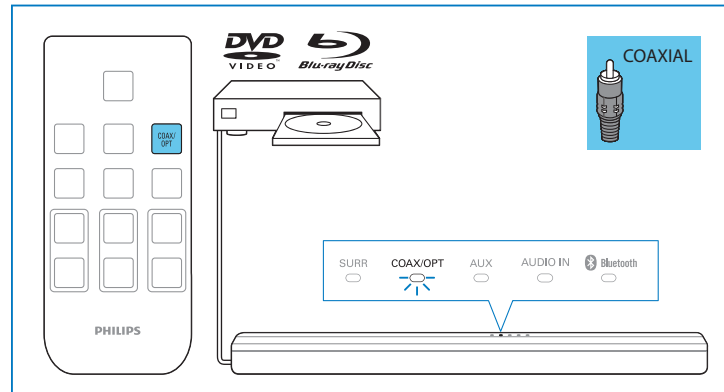
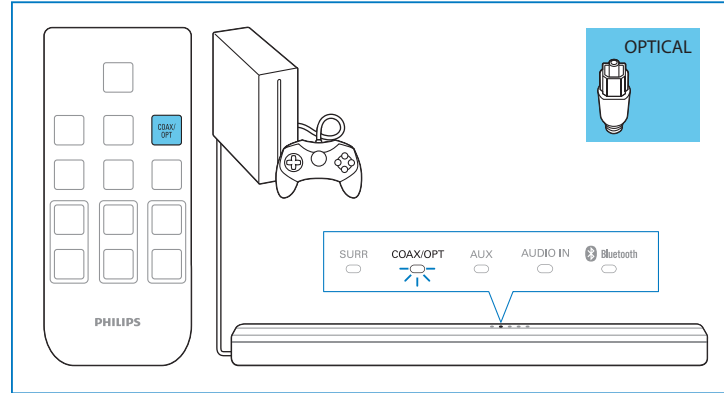


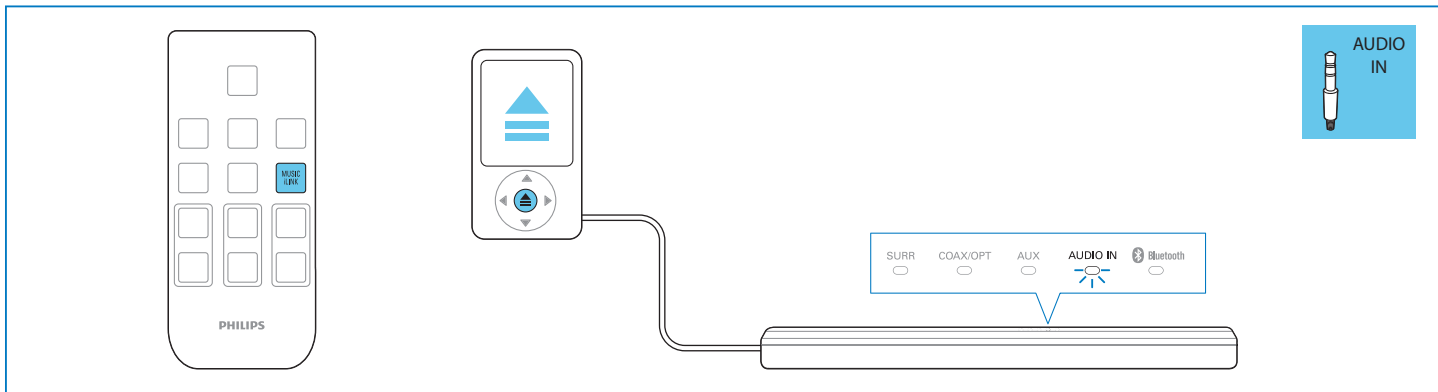
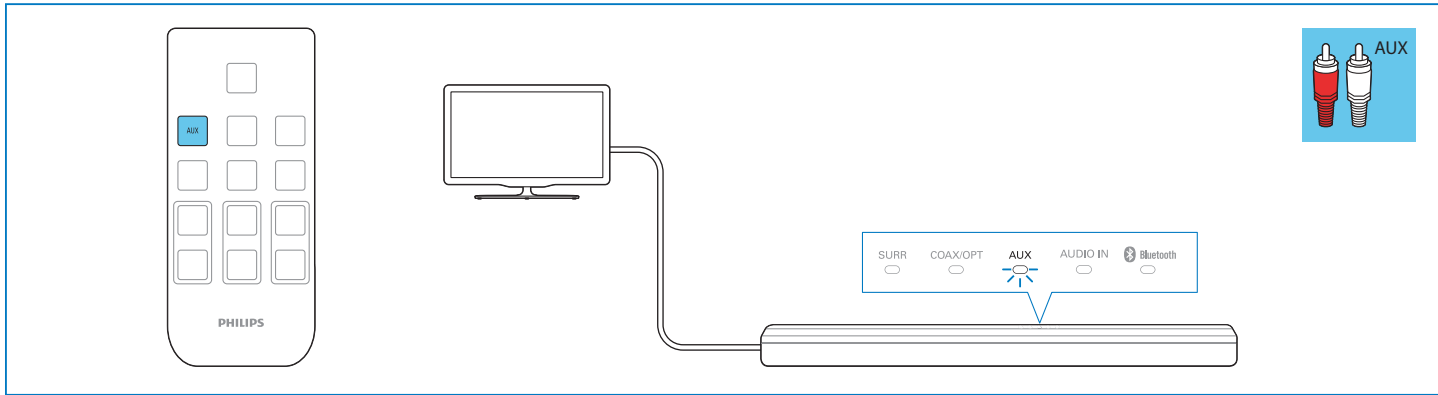
7

EN Select the correct audio source

MS-MY Pilih sumber audio yang betul

TH เลือกแหล่งเสียงที่ถูกต้อง





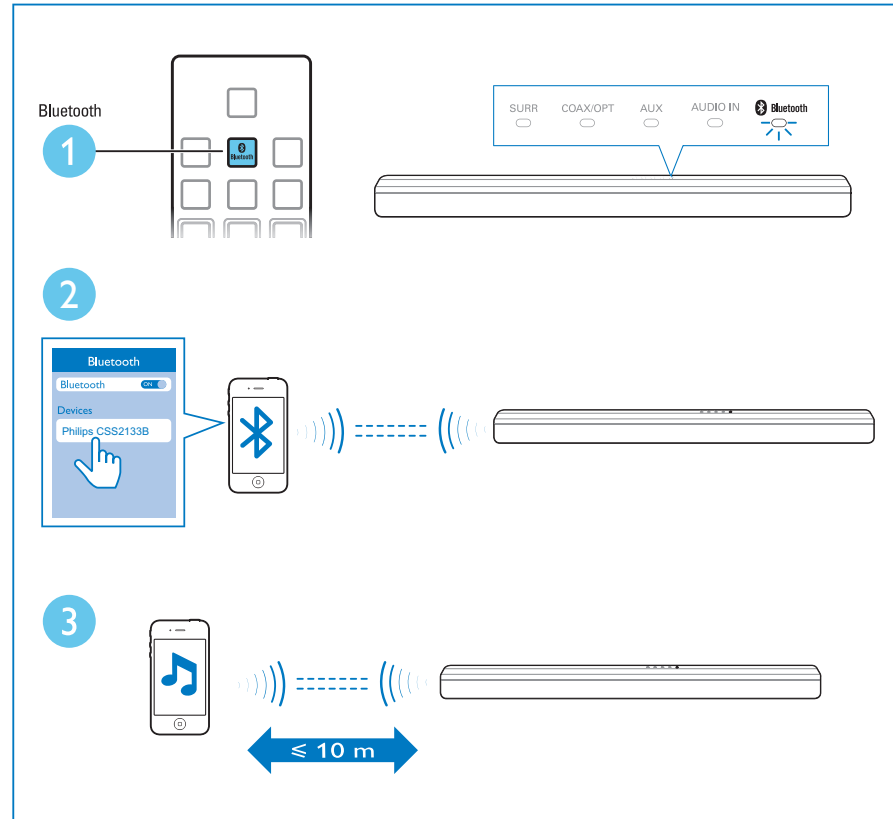


8

EN Play audio through Bluetooth

MS-MY Mainkan audio melalui Bluetooth

TH การเล่นเสียงผ่านทาง Bluetooth

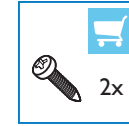




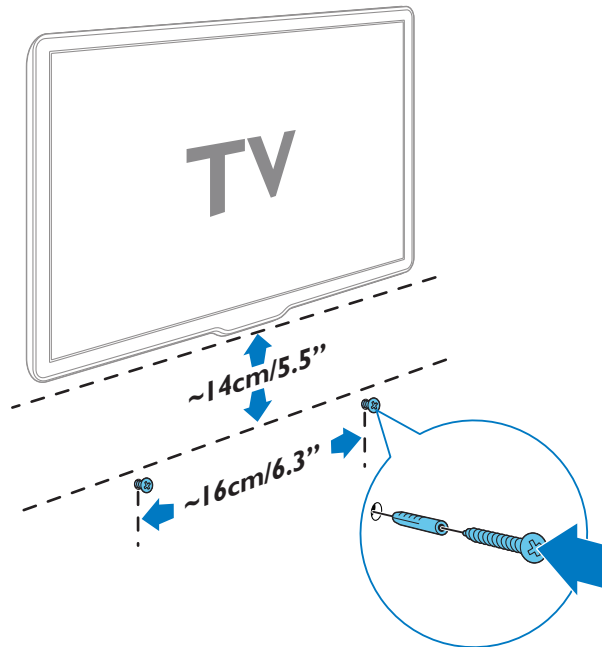
EN Wall mount your product (optional)

MS-MY Lekapkan produk anda dinding (pilihan)

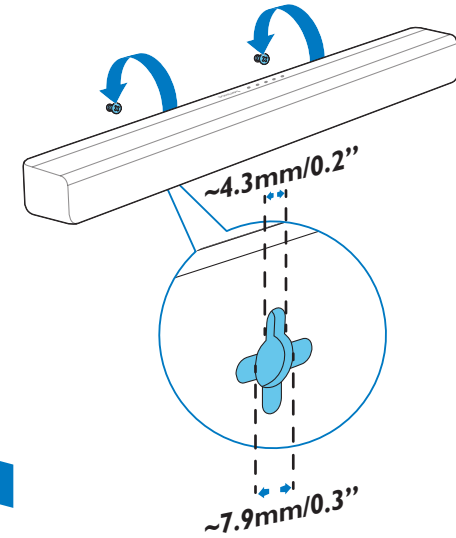
TH ยึดผลิตภัณฑ์นี้เข้ากับผนัง (เลือกได้)

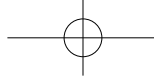


1



2





EN For more information about using this product, visit www.philips.com/support

MS-MY Untuk maklumat lanjut tentang penggunaan produk ini, lawati www.philips.com/support

TH สำหรับข้อมูลเพิ่มเติมเกี่ยวกับการใช้ผลิตภัณฑ์นี้ โปรดเยี่ยมชม www.philips.com/support



www.philips.com/support



Manufactured under license from Dolby Laboratories. Dolby and the double-D symbol are trademarks of Dolby Laboratories.



The Bluetooth® word mark and logos are registered trademarks owned by Bluetooth SIG, Inc. and any use of such marks by Gibson Innovations Limited is under license. Other trademarks and trade names are those of their respective owners.



Specifications are subject to change without notice
2015 © Gibson Innovations Limited. All rights reserved.
This product has been manufactured by, and is sold under the responsibility of Gibson Innovations Ltd., and Gibson Innovations Ltd. is the warrantor in relation to this product. Philips and the Philips Shield Emblem are registered trademarks of Koninklijke Philips N.V. and are used under license from Koninklijke Philips N.V.

CSS2133B_98_QSG_V1.0

