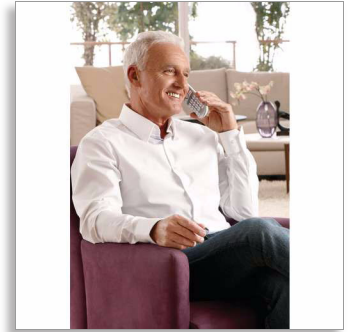


Philips SoClear
Cordless phone

3000 series

1.9" display/ amber backlight
Speakerphone
2 handsets



XL3902S

Comfortable and simple

Easy to see, easy to hear

This comfortable and user-friendly phone has been specially designed to be simple to use. With extra-large buttons and a bigger screen, making calls is easy. And with extra loud sound capabilities, you can set the volume to suit you.

Hear everything loud and clear

- Extra loud sound for clear voice reproduction
- Handset speakerphone allows you to talk handsfree
- Hearing aid compatible - reduces unwanted noise
- Optimized antenna layout for great reception in any room

Smart, simple and easy to use

- Extra loud ringer, so you never miss a call
- Large display and easy to read characters
- Instantly call your loved ones via speed-dial keys
- Ultimate convenience through easy setup
- Up to 17 hours of talk time

Eco-conscious product

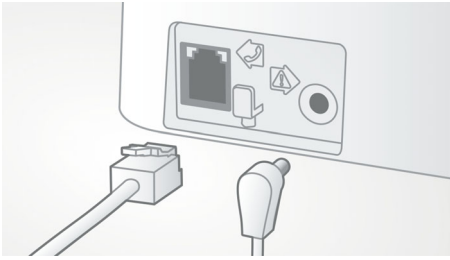
- 60% reduction of radiation when ECO mode is activated
- Low power consumption: < 0,6W in stand-by mode

PHILIPS

Cordless phone
3000 series 1.9" display/ amber backlight, Speakerphone, 2 handsets

Highlights

Easy setup



Ultimate convenience through easy set up.
Simplified installation - Plug & Play product

Extra loud ringer

Extra loud ringer, so you never miss a call

Extra loud sound



Extra loud sound for clear voice reproduction

Handset speakerphone



Handsfree mode uses a built-in loud speaker to amplify the voice of the caller, allowing you to speak and listen during a call without holding the phone to your ear. This is especially useful if you want to share the call with others or simply multitask.

Hearing aid compatible



Hearing aid compatible - reduces unwanted noise

Instant calling



Instantly call your loved ones via speed-dial keys

Large, easy to read display



Large display and easy to read characters

Optimized antenna layout

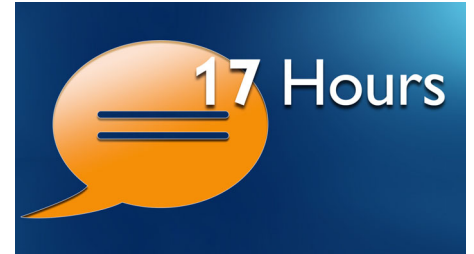


Our optimized antenna layout ensures strong and stable reception – even in areas of the

XL3902S/51

house where cordless transmission is difficult. Now you can take a call wherever you are in the house, and enjoy a long, uninterrupted conversation even as you walk around.

Up to 17 hours talk time



The phone can support up to 17 hours conversation on a single charge.

ECO mode



60% reduction of radiation when ECO mode is activated

Low power consumption: < 0.6 W



Philips phones are energy efficient and are designed to be respectful to the environment. Now the power consumed in stand-by mode is less than < 0.6 W.

Specifications

Sound

- Hearing Aid Compatible
- Volume control on handset
- Ringtones on handset: 10 polyphonic

Picture/Display

- Display size: 4.8 cm / 1.9"
- Display type: FSTN - dot matrix
- Backlight: Yes
- Backlight color: Soft Amber

Convenience

- Menu structure in the handset: List Menu
- Speakerphone - talk handsfree
- Personalization: Silence mode
- Signal strength indicator: 3- bar indicator
- Battery level indicator: 3- bar battery icon
- Intercom - multiple handsets
- Date / Time display
- Alarm Clock
- Battery charge indication
- Programmable hot keys: Key 1 and 2, and M1/2/3
- Call Management: Call Waiting*, Microphone mute, Missed Calls, Received Calls, AOH/ Caller ID
- Key tone on/off
- Auto hang up
- Multi base capability: 1
- Multi handset capability: Up to 4
- Number of keys: 23
- Backlit keypad: Soft Amber
- Base Station keys: Paging key
- Up to 17 hrs talk time
- Up to 300 hrs standby time
- Charge time: 8 hours
- Line cord length: 1.8m

- Power cord length: 1.8m
- Range: Open field <300m; in door <50m

Memory Capacity

- Phonebook: 100 names and numbers + 2 direct access memories
- Redial List Capacity: 20 entries
- Call log entries: 50 entries
- Phonebook store in the base

Power

- Battery capacity: 650 mAh
- Battery type: AAA NiMH Rechargeable
- Mains power: AC 100-240V ~50/60Hz

Security

- Transmission encryption : Yes

Network Features

- Compatible: GAP

SAR Value

- Philips handsets: <0.1 W/kg

Eco Design

- EcoMode: automatic & manual

Packaging dimensions

- Packaging type: Carton
- Number of products included: 1
- Type of shelf placement: Laying
- Packaging dimensions (W x H x D):
19.7 x 15.7 x 11.9 cm
- Gross weight: 0.87 kg
- Nett weight: 0.719 kg
- Tare weight: 0.151 kg
- EAN: 87 12581 66146 5



Issue date 2015-03-01

Version: 2.0.3

12 NC: 8670 000 95777
EAN: 87 12581 66146 5

© 2015 Koninklijke Philips N.V.
All Rights reserved.

Specifications are subject to change without notice.
Trademarks are the property of Koninklijke Philips N.V.
or their respective owners.

www.philips.com