

For product support, visit  
Para obtener asistencia técnica, visite  
Pour en savoir plus sur l'assistance sur les produits, visitez le site

HTL5110

[www.hd.philips.com](http://www.hd.philips.com)



# Quick start guide

**EN** For Product recycling information, please visit - [www.recycle.philips.com](http://www.recycle.philips.com)

**FR-CA** Para obtener información de productos de reciclaje, por favor visite - [www.recycle.philips.com](http://www.recycle.philips.com)

**ES** Para obtener información del reciclaje de productos, por favor visite - [www.recycle.philips.com](http://www.recycle.philips.com)

P&F USA, Inc.

**PHILIPS**



**EN** Before using your product, read all accompanying safety information

**FR-CA** Avant d'utiliser votre produit, prenez le temps de lire toute l'information de sécurité connexe

**ES** Antes de usar el producto, consulte la información de seguridad que se encuentra adjunta



**EN** For further assistance, call the customer support service in your country.

To obtain assistance in the U.S.A., Canada, Puerto Rico, or the U.S. Virgin Islands, contact Philips Customer Care Center at 1-866-310-0744

To obtain assistance in Mexico, contact Philips Customer Care Center at 01 800 839 1989

**FR-CA** Pour obtenir de l'aide supplémentaire, communiquez avec le centre de service à la clientèle de votre pays.

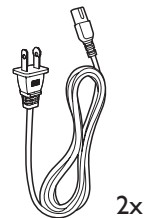
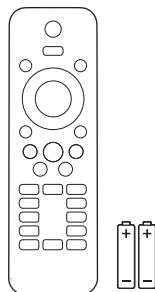
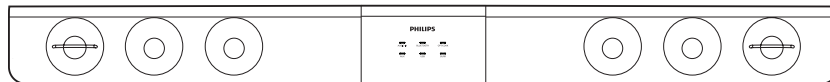
Pour obtenir de l'aide aux États-Unis, au Canada, à Puerto Rico ou aux Îles Vierges américaines, communiquez avec le centre de service à la clientèle Philips au : 1-866-310-0744

Pour obtenir l'aide au Mexique, entrez en contact avec le centre de soin de client de Philips à 01 800 839 1989

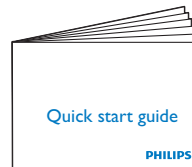
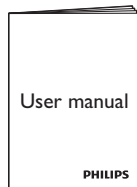
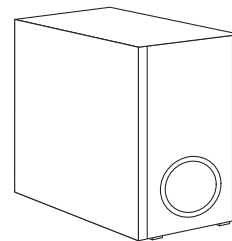
**ES** Para obtener más información, llame al servicio de soporte al cliente de su país.

Para obtener asistencia en los Estados Unidos, en Canadá, Puerto Rico o en las Islas Virgenes de los Estados Unidos, comuníquese con Centro de atención al cliente de Philips al 1-866-310-0744

Solo para Mexico CENTRO DE ATENCION A CLIENTES LADA, 01 800 839 1989 Solo Para Mexico.



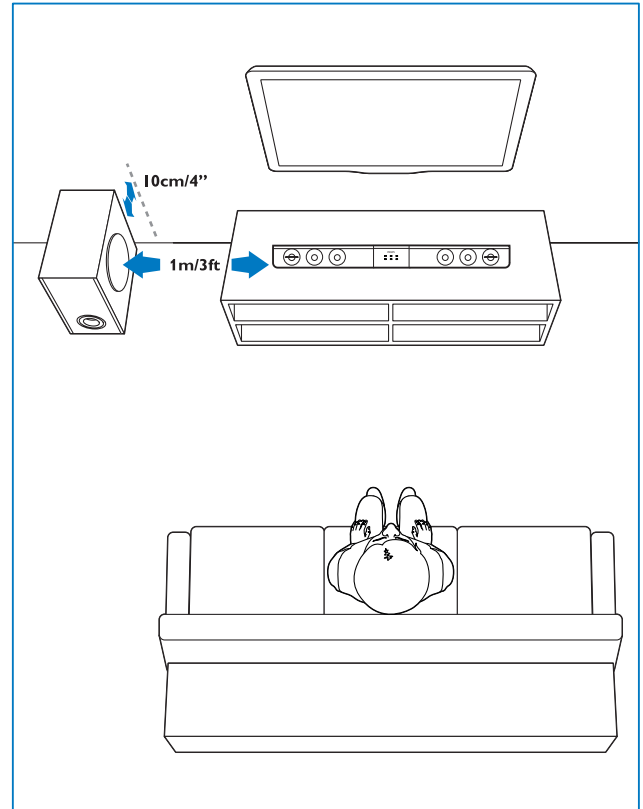
Power Cord



Cable Tie

# 1

- EN** Position the SoundBar  
**FR-CA** Positionnez le SoundBar  
**ES** Posicione el sistema SoundBar

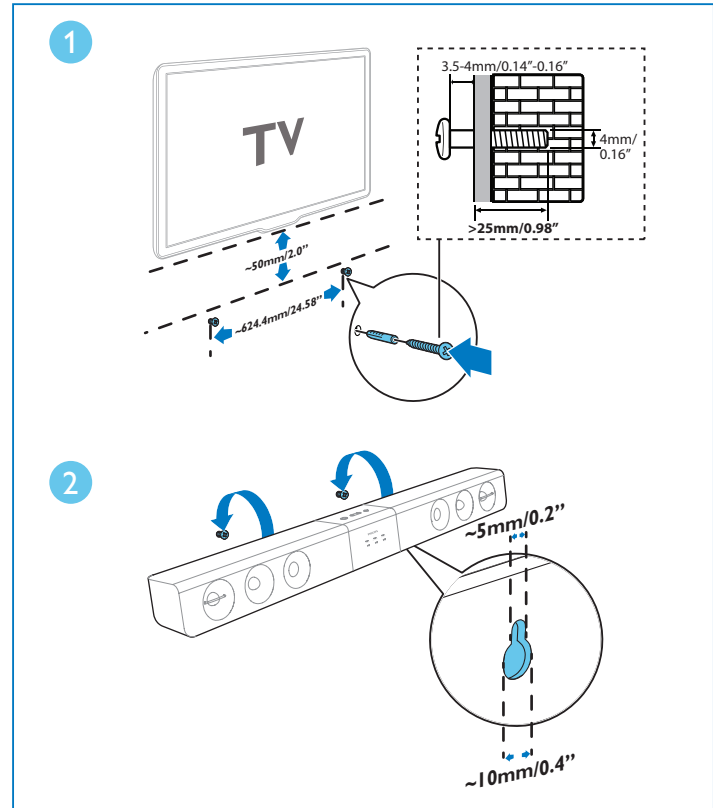




**EN** Wall mount the SoundBar (optional)

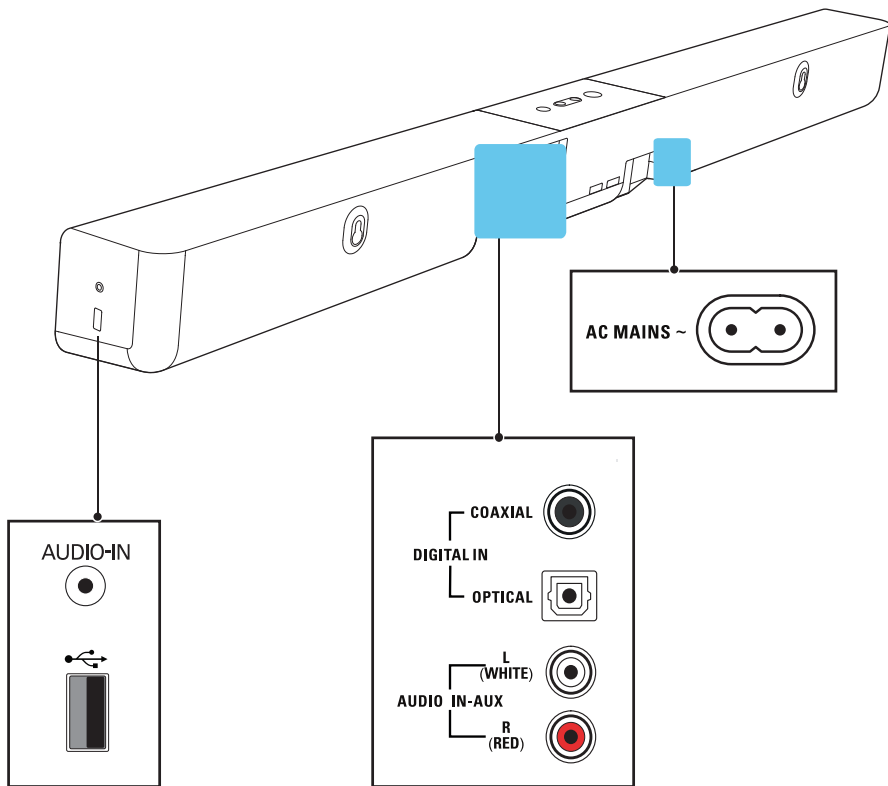
**FR-CA** Fixez le SoundBar au mur (facultatif)

**ES** Montaje en pared del SoundBar (opcional)



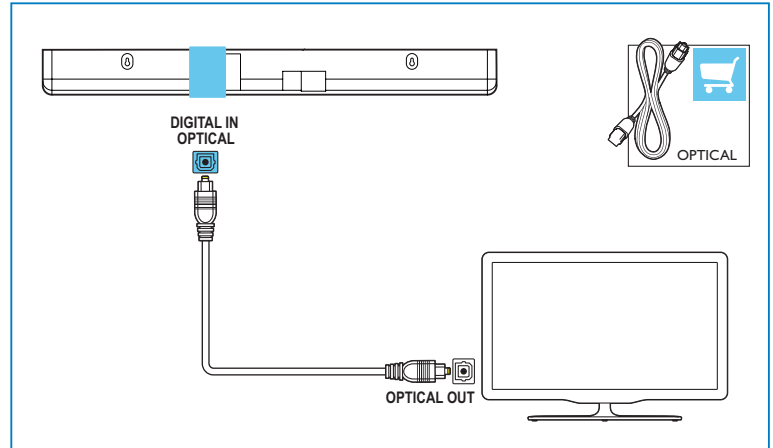
# 2

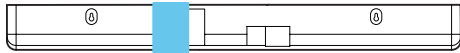
- EN** Connect the SoundBar
- FR-CA** Branchez le SoundBar
- ES** Conecte el sistema SoundBar



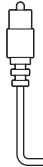
# 3

- EN** Enjoy audio from your devices
- FR-CA** Profitez du contenu audio de vos appareils
- ES** Disfrute el audio de sus dispositivos

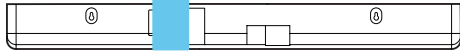
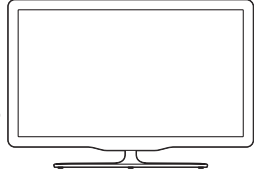




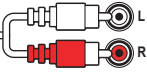
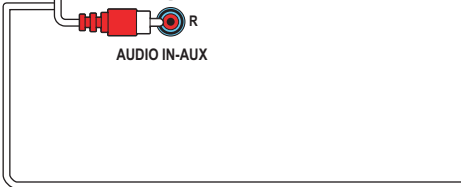
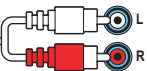
DIGITAL IN  
COAXIAL



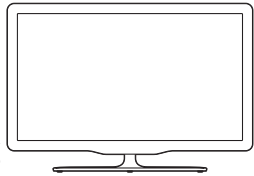
COAXIAL OUT



AUDIO IN-AUX

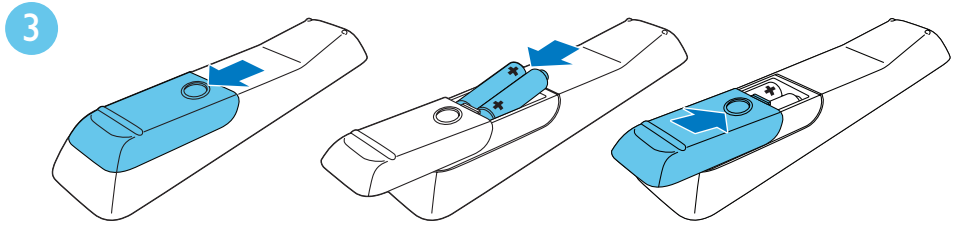
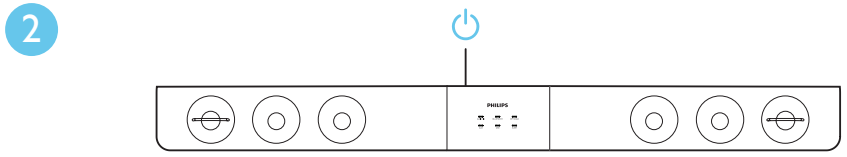
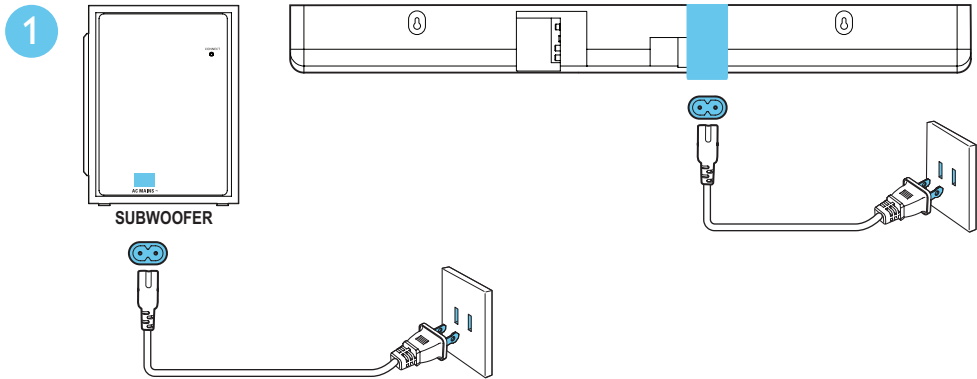


AUDIO OUT



# 4

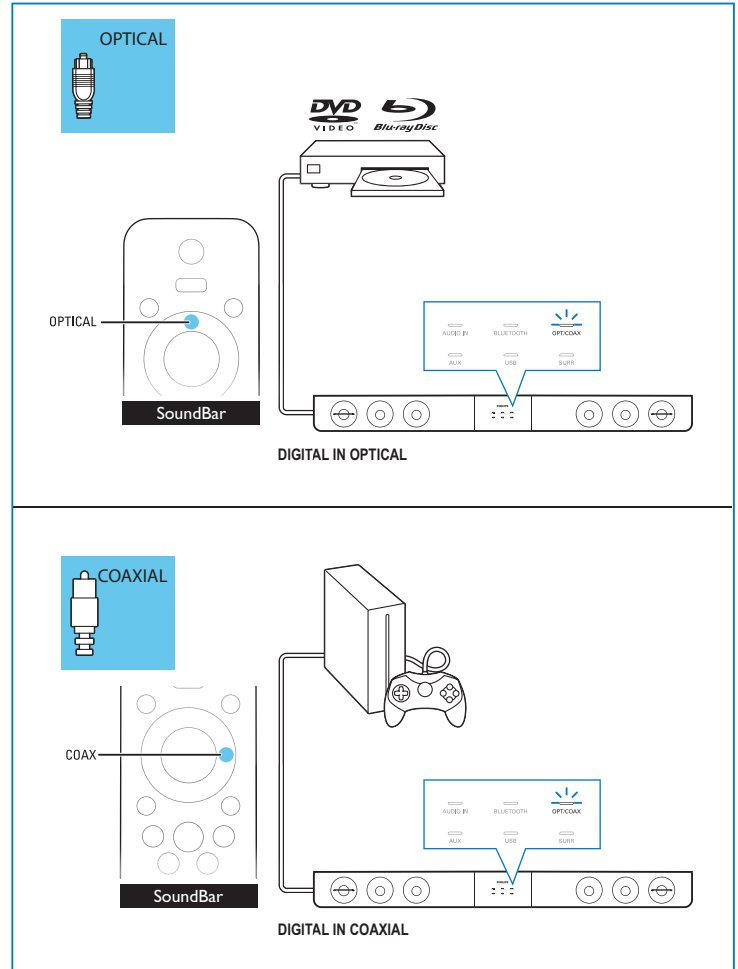
**EN** Switch on the SoundBar  
**FR-CA** Allumez le SoundBar  
**ES** Encienda el sistema SoundBar

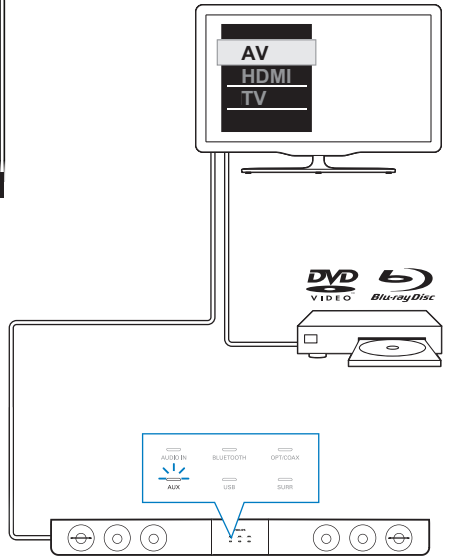
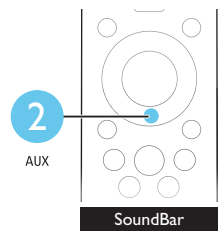
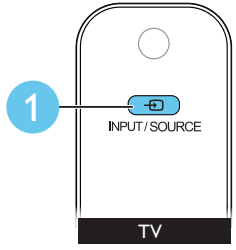
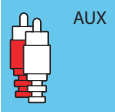




# 5

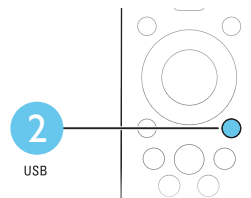
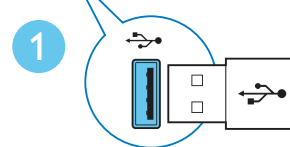
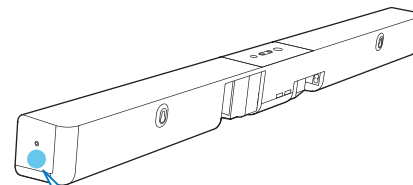
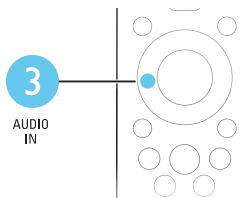
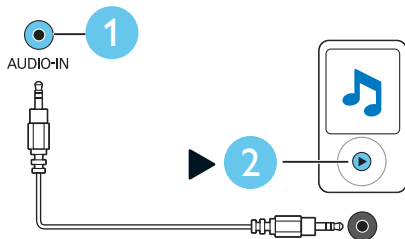
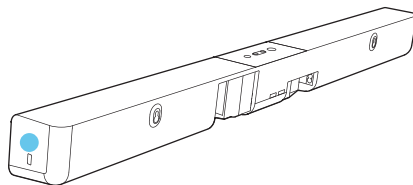
- EN** Select the correct audio source
- FR-CA** Sélectionnez la source audio appropriée
- ES** Selección de la fuente de audio correcta





# 6

- EN** Play other devices
- FR-CA** Lisez le contenu d'autres appareils
- ES** Reproducción de otros dispositivos

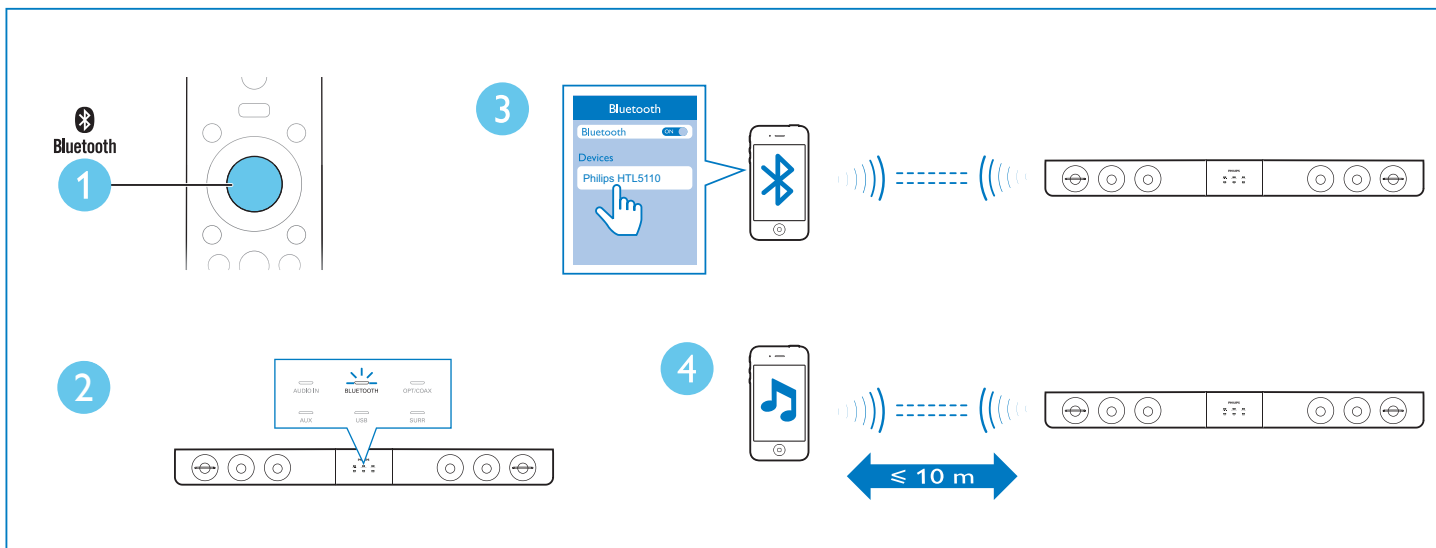


# 7

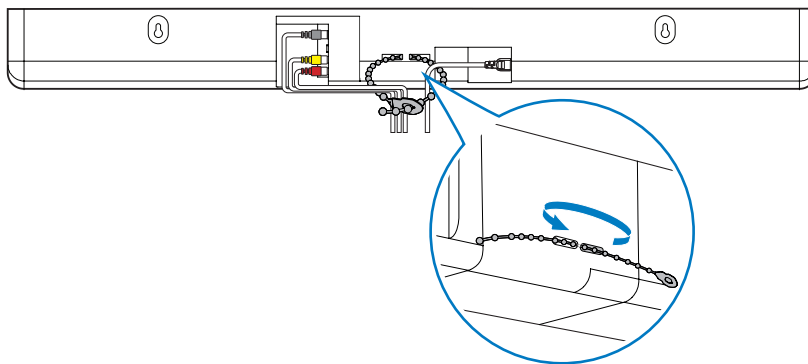
**EN** Play audio through Bluetooth

**FR-CA** Lisez du contenu audio par connexion Bluetooth

**ES** Reproducción de audio a través de Bluetooth



- EN** Cable management  
**FR-CA** Gestion des câbles  
**ES** Administración de cables





Manufactured under license from Dolby Laboratories. Dolby and the double-D symbol are trademarks of Dolby Laboratories.



The Bluetooth® word mark and logos are registered trademarks owned by Bluetooth SIG, Inc. and any use of such marks by Philips is under license. Other trademarks and trade names are those of their respective owners.



- EN** For more information about using this product, visit [www.philips.com/support](http://www.philips.com/support)
- FR-CA** Pour en savoir plus sur l'utilisation de ce produit, visitez le site [www.philips.com/support](http://www.philips.com/support)
- ES** Para obtener más información acerca de este producto, visite [www.philips.com/support](http://www.philips.com/support)

P&F USA, Inc.  
PO Box 2248 Alpharetta, GA 30023-2248



Non-contractual images. / Images non contractuelles. / Außervertragliche Bilder.  
All registered and unregistered trademarks are property of their respective owners.  
Specifications are subject to change without notice  
Trademarks are the property of Koninklijke Philips Electronics  
N.V. or their respective owners  
2013 © Koninklijke Philips Electronics N.V. All rights reserved  
[www.philips.com](http://www.philips.com)  
HTL5110\_F7\_QSG\_V1.0

