

Always there to help you

Register your product and get support at
www.philips.com/support



HTD3509

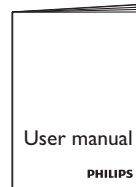
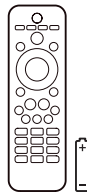
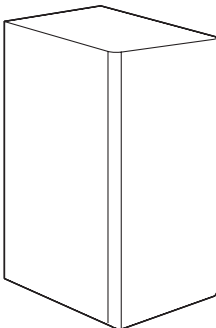
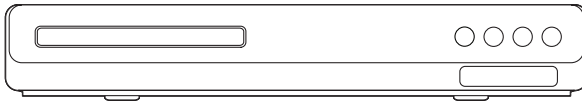


Quick start guide

PHILIPS



Before using your product, read all accompanying safety information



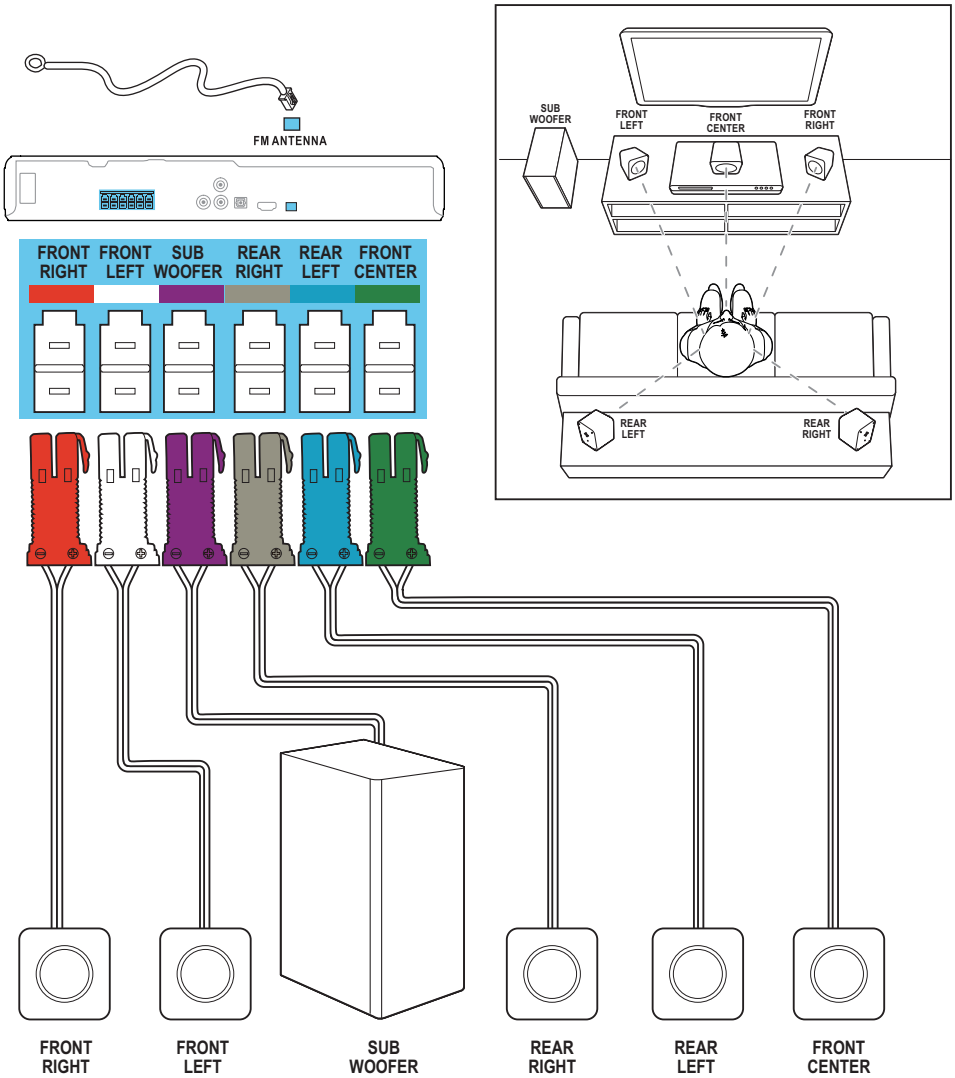
Power Cord



FM Antenna

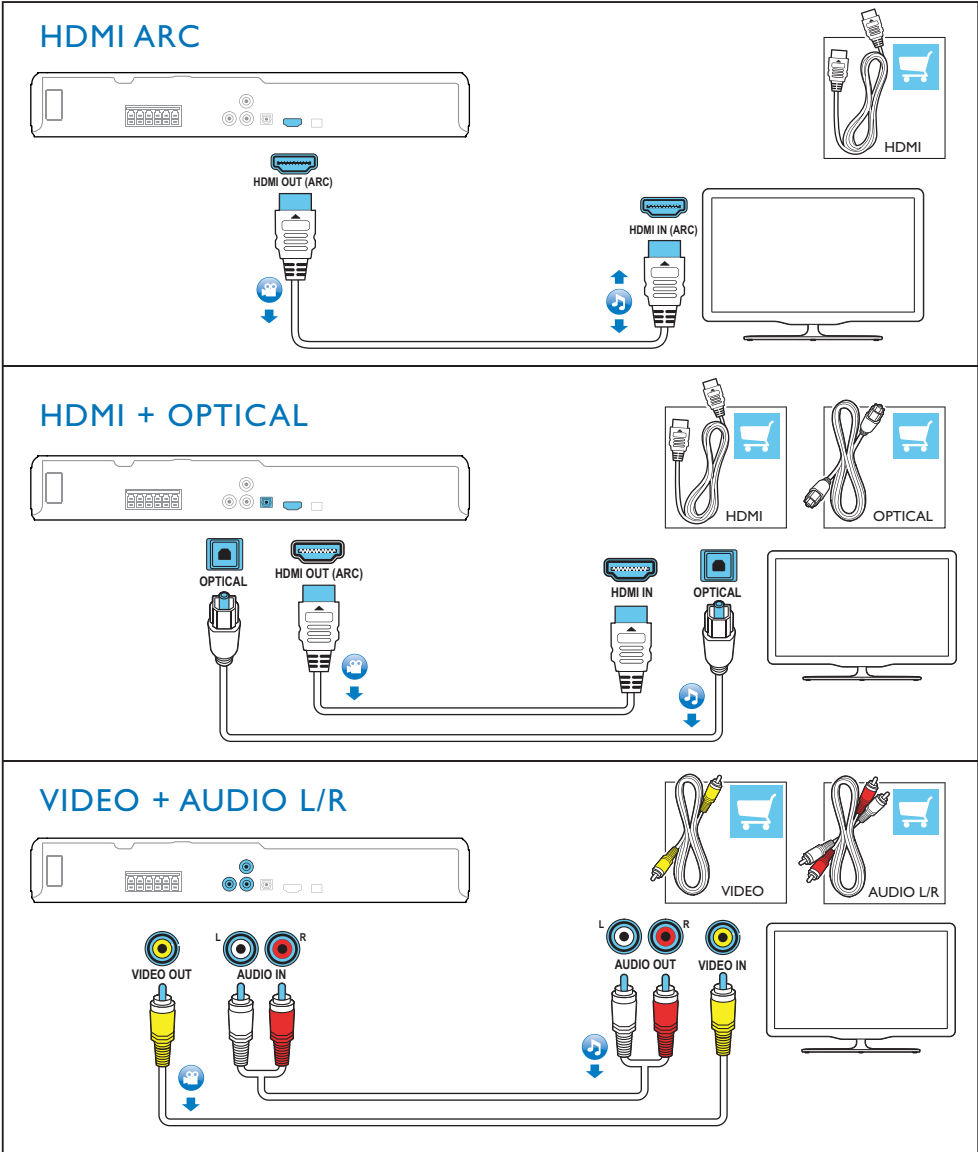
1

Connect and position the home theater



2

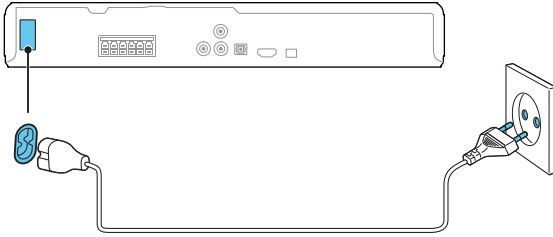
Connect to TV in one of these ways



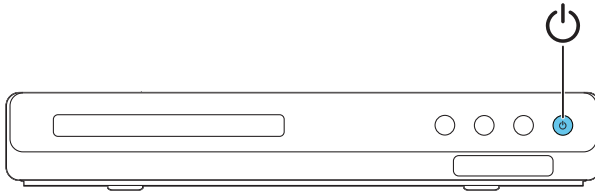
3

Switch on the home theater

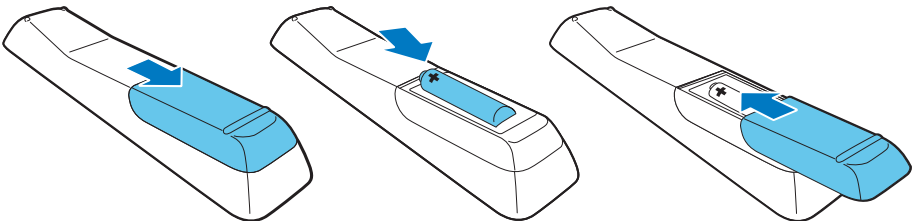
1



2

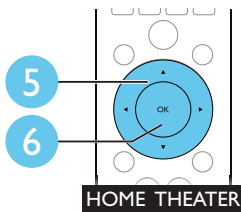
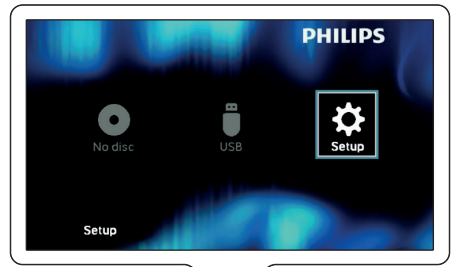
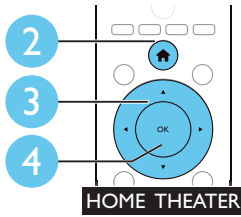
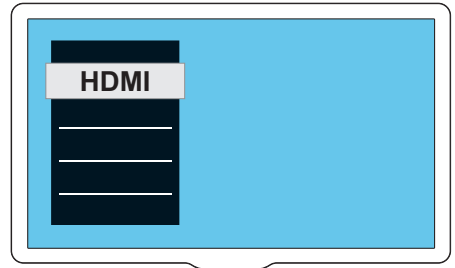
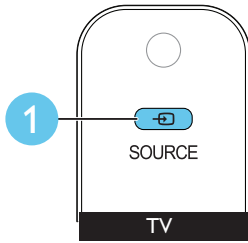


3



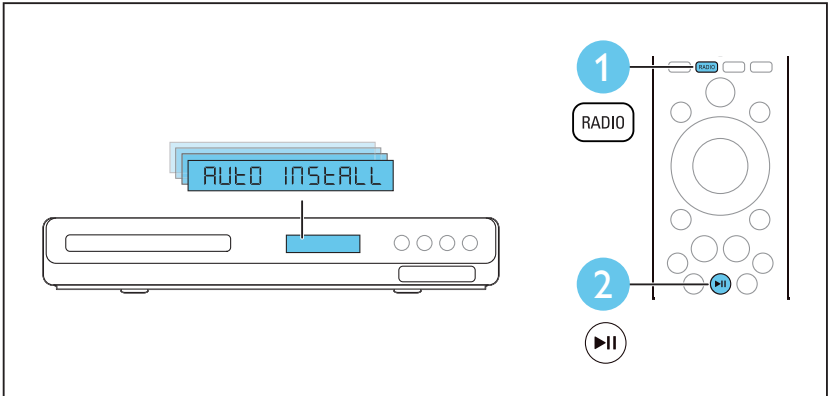
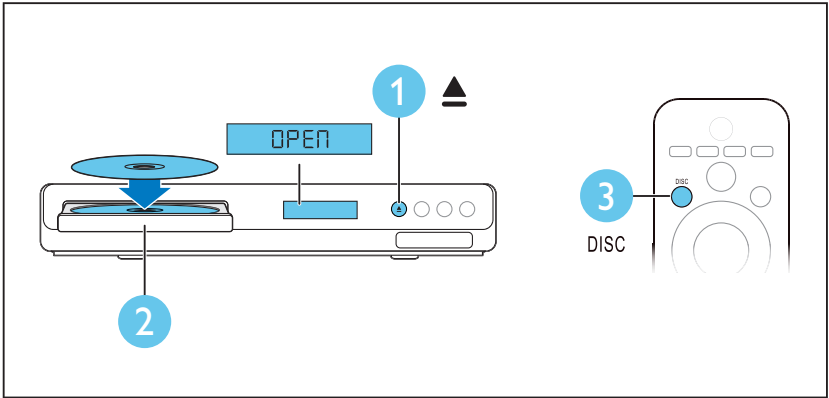
4

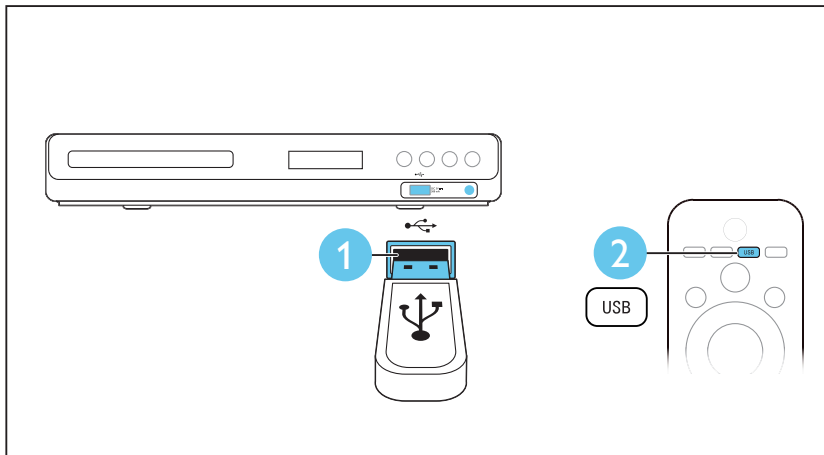
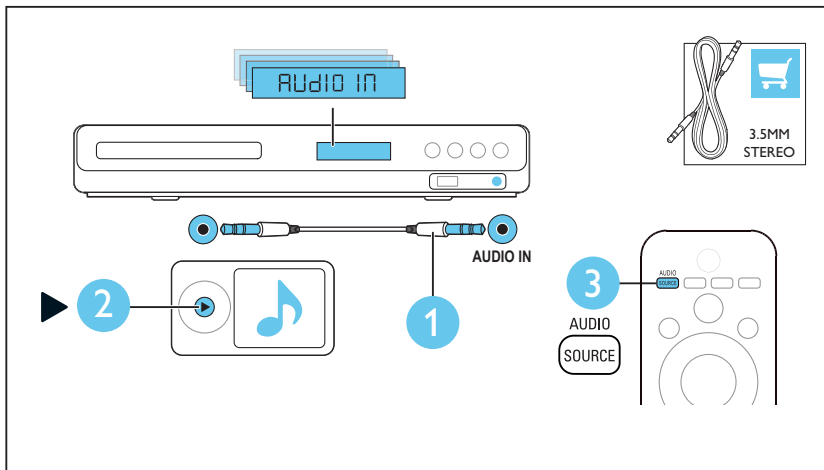
Complete the first time setup



5

Use your home theater







For more information about using this product, visit www.philips.com/support



www.philips.com/support



Specifications are subject to change without notice
© 2015 Koninklijke Philips N.V. All rights reserved.
Trademarks are the property of Koninklijke Philips N.V. or their respective owners.

HTD3509_94_QSG_V1.0

