

Always there to help you

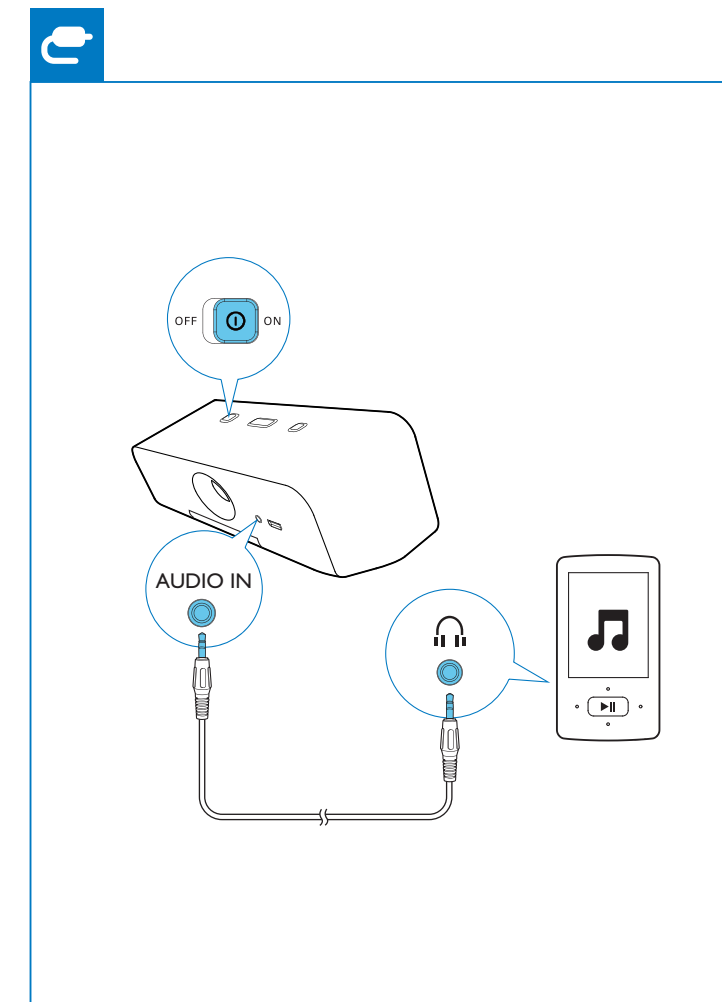
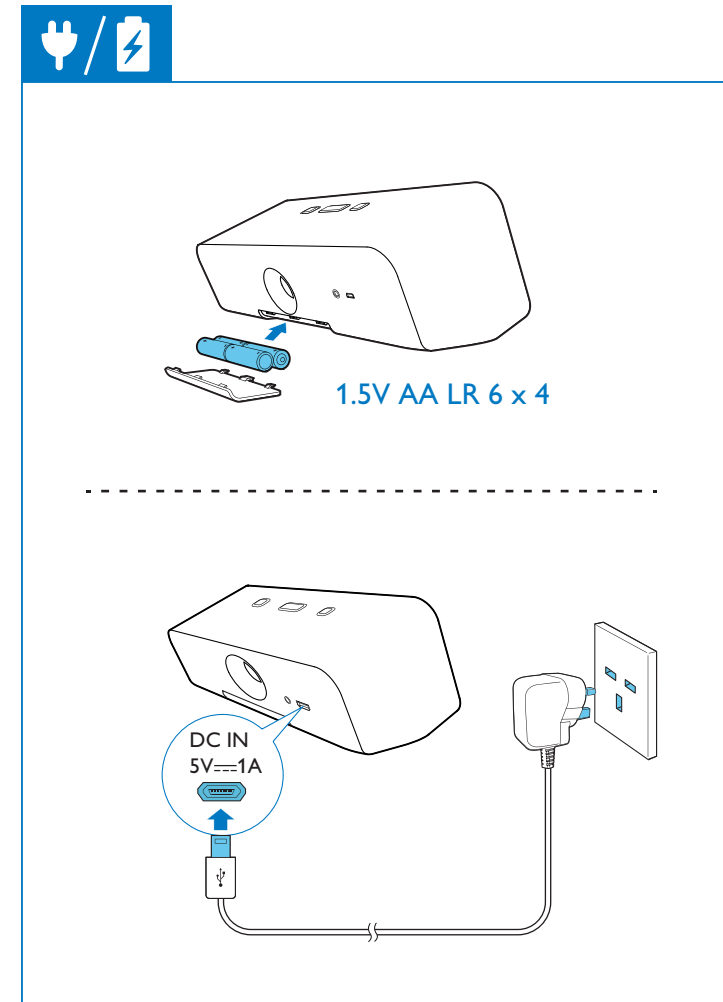
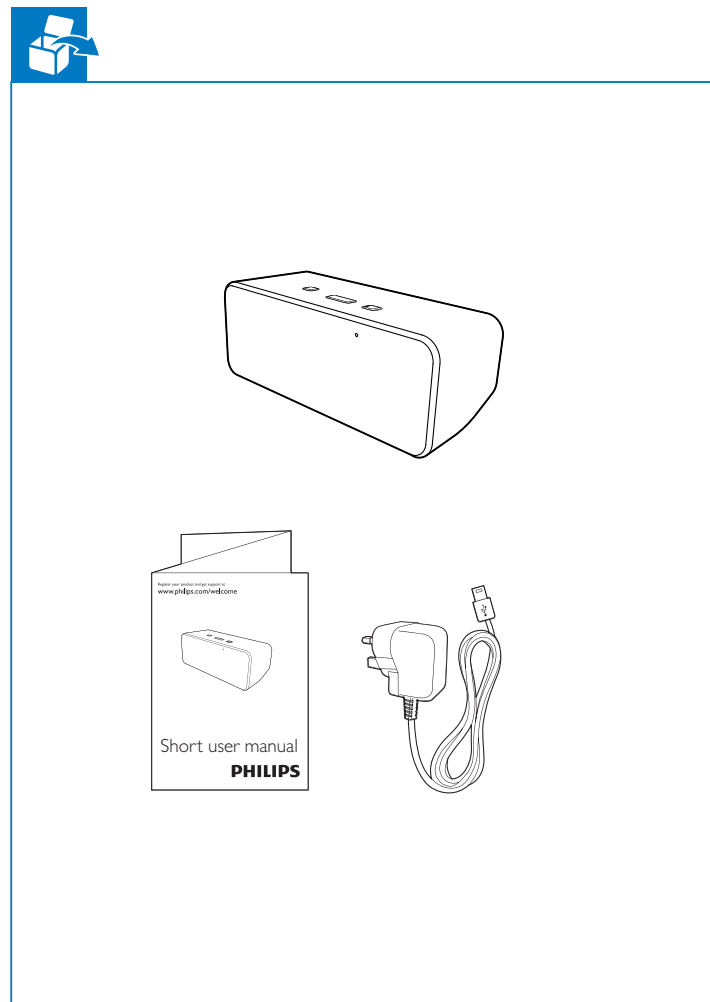
Register your product and get support at
www.philips.com/welcome



SBT300/05



Short user manual



1 Press **Pairing** for 2 seconds to enter pairing mode.

2 Enable Bluetooth®, then select '**PHILIPS_SBT300**' on your mobile device (if necessary, input '0000' as the pairing password).

3 Wait until the Bluetooth® indicator turns solid blue and the speaker beeps twice.

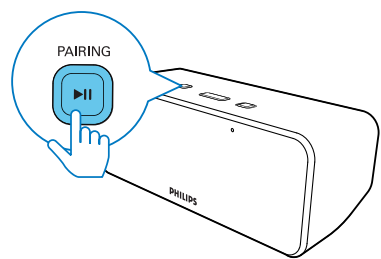
4 Start music play on your mobile device.

* The speaker turns off automatically when it is idle for 15 minutes without Audio-in cable plugged in. To restart the speaker, slide **ON/OFF** twice.

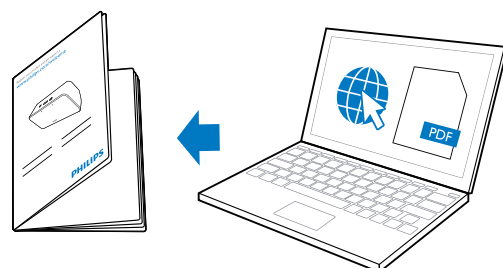
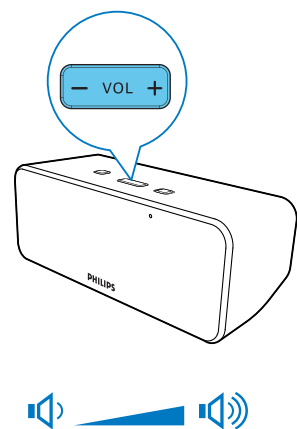
All registered and unregistered trademarks are property of their respective owners.
© 2013 Koninklijke Philips Electronics N.V.
All rights reserved.

SBT300_05_Short UM_V1.0





* Press to play / pause
(Only available in Bluetooth mode)



www.philips.com/support

Safety

Warning

- Never remove the casing of this apparatus.
- Never lubricate any part of this apparatus.
- Never look into the laser beam inside this apparatus.
- Never place this apparatus on other electrical equipment.
- Keep this apparatus away from direct sunlight, naked flames or heat.
- Ensure that you always have easy access to the power cord, plug or adaptor to disconnect the apparatus from the power.

- The device shall not be exposed to dripping or splashing.
- Do not place any source of danger on the device (e.g. liquid filled objects, lit candles).
- Make sure that there is enough free space around the product for ventilation.
- Battery usage CAUTION – To prevent battery leakage which may result in bodily injury, property damage, or damage to the unit:
 - Install all batteries correctly, + and - as marked on the unit.
 - Do not mix batteries (old and new or carbon and alkaline, etc.).
 - Remove batteries when the unit is not used for a long time.
 - Batteries (battery pack or batteries installed) shall not be exposed to excessive heat such as sunshine, fire or the like.
- Where the plug of the Direct Plug-in Adapter is used as the disconnect device, the disconnect device shall remain readily operable.
- Only use attachments/accessories specified by the manufacturer.

Notice

Any changes or modifications made to this device that are not expressly approved by Philips Consumer Lifestyle may void the user's authority to operate the equipment.



This product complies with the radio interference requirements of the European Community.

CE 0890

This product complies with the requirement of the 1999/5/EC directive. A copy of the EC declaration of Conformity is available in the Portable Document Format(PDF) version of the user manual at www.philips.com/support.



Your product is designed and manufactured with high quality materials and components, which can be recycled and reused.



When this crossed-out wheeled bin symbol is attached to a product it means that the product is covered by the European Directive 2002/96/EC. Please inform yourself about the local separate collection system for electrical and electronic products.

Please act according to your local rules and do not dispose of your old products with your normal household waste. Correct disposal of your old product helps to prevent potential negative consequences for the environment and human health.



Your product contains batteries covered by the European Directive 2006/66/EC, which cannot be disposed with normal household waste. Please inform yourself about the local rules on separate collection of batteries because correct disposal helps to prevent negative consequences for the environmental and human health.

Environmental information

All unnecessary packaging has been omitted. We have tried to make the packaging easy to separate into three materials: cardboard (box), polystyrene foam (buffer) and polyethylene (bags, protective foam sheet.)

Your system consists of materials which can be recycled and reused if disassembled by a specialized company. Please observe the local regulations regarding the disposal of packaging materials, exhausted batteries and old equipment.



The making of unauthorized copies of copy-protected material, including computer programs, files, broadcasts and sound recordings, may be an infringement of

copyrights and constitute a criminal offence. This equipment should not be used for such purposes.

Note

- The type plate is located on the back of the apparatus.

Specifications

Amplifier

| | |
|-----------------------|--------------------|
| Rated Output Power | 2X2 W RMS |
| Signal to Noise Ratio | > 67 dBA |
| MP3 Link | 600 mV RMS 20 kohm |

Bluetooth

| | |
|-------------------|-------------------------|
| Bluetooth version | V2.1+ EDR |
| Frequency band | 2.402-2.480 GHzISM Band |
| Rang | 10m (free space) |

General information

| | |
|-----------------------------|---|
| AC Power | ASUC12B-050100 Input: 100-240 V~; 50/60Hz; 0.3 A Output: 5VDC == 1000mA |
| Operation Power Consumption | 4 W |
| Dimensions - Main Unit | 300 x 117 x 118mm |
| Weight - Main Unit | 1.15 kg |

