

# Always there to help you

Register your product and get support at  
[www.philips.com/support](http://www.philips.com/support)



BT50  
BT25



## User manual

# PHILIPS



# Contents

---

<b>1</b>	<b>Important</b>	<b>2</b>
----------	------------------	----------

---

<b>2</b>	<b>Your portable speaker</b>	<b>3</b>
	Introduction	3
	What's in the box	3
	Overview of the speaker	3

---

<b>3</b>	<b>Get started</b>	<b>4</b>
	Charge the built-in battery	4
	Turn on/off	4

---

<b>4</b>	<b>Play from Bluetooth devices</b>	<b>5</b>
	Connect a device	5
	Disconnect a device	5
	Reconnect a device	6

---

<b>5</b>	<b>Play from external devices</b>	<b>7</b>
----------	-----------------------------------	----------

---

<b>6</b>	<b>Product information</b>	<b>8</b>
	Amplifier	8
	Speaker	8
	Bluetooth	8
	General information	8

---

<b>7</b>	<b>Troubleshooting</b>	<b>9</b>
	General	9
	About Bluetooth device	9

---

<b>8</b>	<b>Notice</b>	<b>10</b>
	Compliance	10
	Care of the environment	10
	Trademark notice	10

# 1 Important



## Warning

- Never remove the casing of this product.
  - Never lubricate any part of this product.
  - Never place this product on other electrical equipment.
  - Keep this product away from direct sunlight, naked flames or heat.
- 
- Read these instructions.
  - Heed all warnings.
  - Follow all instructions.
  - Do not use this apparatus near water.
  - Do not install near any heat sources such as radiators, heat registers, stoves, or other apparatus (including amplifiers) that produce heat.
  - Only use attachments/accessories specified by the manufacturer.
  - Refer all servicing to qualified service personnel. Servicing is required when the apparatus has been damaged in any way, such as liquid has been spilled or objects have fallen into the apparatus, the apparatus has been exposed to rain or moisture, does not operate normally, or has been dropped.
  - The battery shall not be exposed to excessive heat such as sunshine, fire or the like.
  - Apparatus shall not be exposed to dripping or splashing.
  - Do not place any sources of danger on the apparatus (e.g. liquid filled objects, lighted candles).



## Note

- The type plate is located on the bottom of the apparatus.

## 2 Your portable speaker

Congratulations on your purchase, and welcome to Philips! To fully benefit from the support that Philips offers, register your product at [www.philips.com/welcome](http://www.philips.com/welcome).

### Introduction

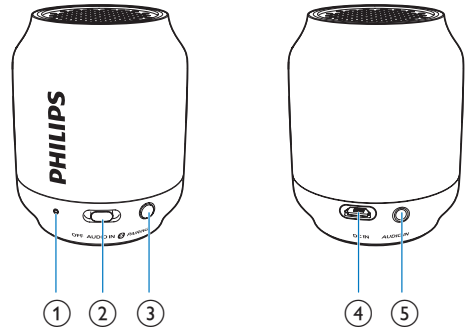
With this speaker, you can enjoy audio from Bluetooth-enabled devices or other external devices.

### What's in the box

Check and identify the contents of your package:

- Speaker
- USB cable for charging
- Short user manual
- Safety & notice leaflet

### Overview of the speaker



- ① **LED indicator**
  - Indicate battery or Bluetooth connection status.
- ② **Source selector (OFF/AUDIO IN/ BT)**
  - Select Bluetooth or AUDIO IN source.
  - Turn the speaker off.
- ③ **PAIRING**
  - Enter Bluetooth pairing mode.
  - Disconnect Bluetooth connection.
- ④ **DC IN**
  - Recharge the built-in battery.
- ⑤ **AUDIO IN**
  - Connect an external audio device.

# 3 Get started

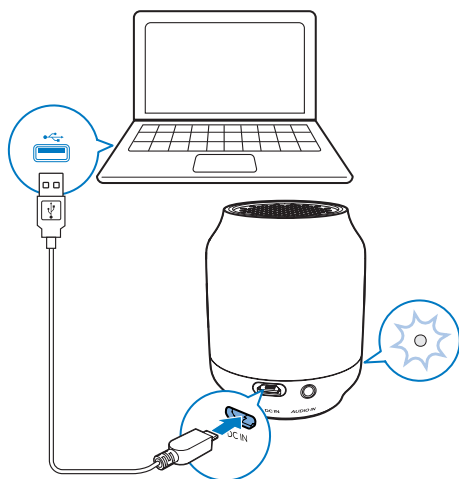
Always follow the instructions in this chapter in sequence.

## Charge the built-in battery

The speaker is powered by a built-in rechargeable battery.

### Note

- Before use, fully charge the built-in battery.
- The micro USB socket is for charging only.
- It takes you approximately two hours to fully charge the battery.
- Rechargeable battery has a limited number of charge cycles. Battery life and number of charge cycles vary by use and settings.



Connect the USB cable between

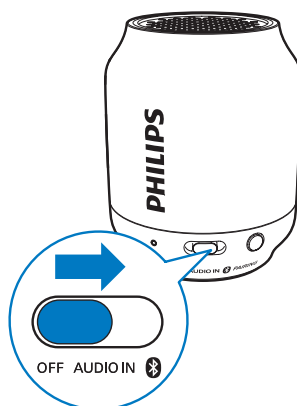
- the **DC IN** socket on the speaker; and
- a USB socket on a computer.

The LED indicator indicates the battery status.

	Under charging	Fully charged
"OFF" mode	Flashing white	Off
"AUDIO IN" mode	Flashing white	Solid white
"Bluetooth" mode	Flashing blue or solid blue (depending on Bluetooth connection status)	Flashing blue or solid blue (depending on Bluetooth connection status)

## Turn on/off

- To turn the speaker on, slide the source selector to **AUDIO IN** or **0**.



- To turn the speaker off, slide the source selector to **OFF**.

## Switch to standby mode

The speaker switches to standby mode automatically in the following situations:

- In Bluetooth mode, the connection with Bluetooth device is invalid for 15 minutes; or
- In AUDIO IN mode, no audio input cable is connected for 15 minutes.

# 4 Play from Bluetooth devices

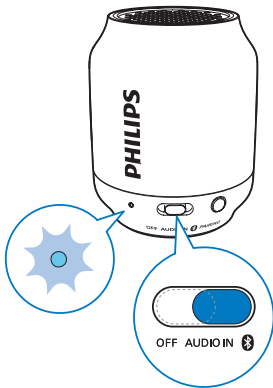
With this speaker, you can listen to audio from Bluetooth-enabled devices.

### Note

- The speaker can memorize a maximum of four paired devices. The fifth paired device will replace the first one.
- Any obstacle between this speaker and a Bluetooth device can reduce the operational range.
- Keep away from any other electronic device that may cause interference.
- The operational range between this speaker and a Bluetooth device is approximately 10 meters (30 feet).
- Make sure that no audio input cable is connected to the **AUDIO IN** socket.

## Connect a device

- 1 Slide the source selector to **BT**.  
↳ The LED indicator flashes blue.



- 2 On your Bluetooth device, enable Bluetooth and search for Bluetooth devices that can be paired (refer to the user manual of the device).

- 3 Select **[Philips BT50]** or **[Philips BT25]** displayed on your device for pairing and connection. If necessary, input "0000" as the pairing password.  
↳ After successful pairing and connection, the speaker beeps twice, and the LED indicator turns solid blue.
  - If you cannot find **[Philips BT50]** or **[Philips BT25]** on your device, press and hold **PAIRING** for more than three seconds until you hear triple beeps.

- 4 Play audio on the Bluetooth device.

### Tip

- You can use your Bluetooth device to control play.

## LED indicator (blue)

Indicator	Bluetooth connection status
Fast flashing (2Hz)	Pairing
Slow flashing (1Hz)	Connecting
Solid blue	Connected

## Disconnect a device

- Press and hold **PAIRING** for more than three seconds;  
↳ The speaker beeps for three times.
- Disable Bluetooth on your device; or
- Move the device beyond the communication range.  
↳ The speaker beeps twice, and the LED indicator flashes blue.

### Note

- Before connecting another Bluetooth device, disconnect the current device first.

---

## Reconnect a device

When you turn on the speaker, it will reconnect the last connected device automatically; If not, select **[Philips BT50]** or **[Philips BT25]** on your Bluetooth device to start connection.

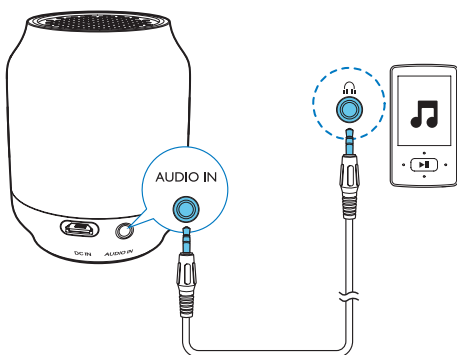


## 5 Play from external devices

With this speaker, you can also listen to an external audio device such as an MP3 player.

### Note

- Make sure that music playback through Bluetooth is stopped.



- 1 Connect an audio input cable (not supplied) with a 3.5 mm connector on both ends to
  - the **AUDIO IN** socket on this speaker;
  - and
  - the headphone socket on the external device.
- 2 Slide the source selector to **AUDIO IN**.  
↳ The LED indicator turns white.
- 3 Play audio on the external device (refer to its user manual).

# 6 Product information



## Note

- Product information is subject to change without prior notice.

## General information

Power Supply (through micro USB socket)	5V, 0.5 A
Built-in Li-polymer Battery	3.7V, 365 mAh
Dimensions - Main Unit (W x H x D)	61 x 76 x 61 mm
Weight - Main Unit	0.1 kg

## Amplifier

Rated Output Power	2W RMS
Frequency Response	100 -16000 Hz, $\pm 3$ dB
Signal to Noise Ratio	> 70 dBA
Audio-in Input	300 mV (typical) – 1600 mV (Max.) RMS

## Speaker

Speaker Impedance	4 ohm
Speaker Driver	4cm full range
Sensitivity	>82dB/m/W $\pm$ 3dB/m/W

## Bluetooth

Bluetooth Version	V2.1 + EDR
Bluetooth profile	A2DP
Frequency band/Output power	2.400GHz - 2.483GHz ISM Band / $\leq$ 4dBm (Class 2)
Bluetooth Range	10 m (Free space)

# 7 Troubleshooting



## Warning

- Never remove the casing of this device.

To keep the warranty valid, never try to repair the system yourself.

If you encounter problems when using this device, check the following points before requesting service. If the problem remains unsolved, go to the Philips Web page ([www.philips.com/support](http://www.philips.com/support)). When you contact Philips, make sure that the device is nearby and the model number and serial number are available.

---

## General

### No power

- Recharge your speaker.

### No sound

- Adjust volume on the connected device.
- When you listen to audio through Bluetooth, make sure that no audio input cable is connected to the **AUDIO IN** socket.
- Make sure that your Bluetooth device is within the effective operational range.

### No response from the speaker

- Recharge the speaker.

---

## About Bluetooth device

### The audio quality is poor after connection with a Bluetooth-enabled device.

- The Bluetooth reception is poor. Move the device closer to this product or remove any obstacle between them.

### Fail to find [Philips BT50] or [Philips BT25] on your device for pairing.

- Press and hold **PAIRING** for more than three seconds, and then try again.

### Cannot connect with the device.

- The Bluetooth function of the device is not enabled. Refer to the user manual of the device for how to enable the function.
- This product is already connected with another Bluetooth-enabled device. Disconnect that device and then try again.

### The paired device connects and disconnects constantly.

- The Bluetooth reception is poor. Move the device closer to this product or remove any obstacle between them.
- For some devices, Bluetooth connection may be deactivated automatically as a power-saving feature. This does not indicate any malfunction of this product.

# 8 Notice

Any changes or modifications made to this device that are not expressly approved by Gibson Innovations may void the user's authority to operate the equipment.

---

## Compliance

Hereby, Gibson Innovations declares that this product is in compliance with the essential requirements and other relevant provisions of Directive 2014/53/EU. You can find the Declaration of Conformity on [www.philips.com/support](http://www.philips.com/support).

---

## Care of the environment

### Disposal of your old product and battery



Your product is designed and manufactured with high quality materials and components, which can be recycled and reused.



This symbol on a product means that the product is covered by European Directive 2012/19/EU.



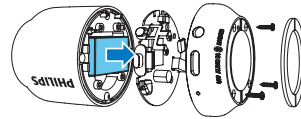
This symbol means that the product contains a built-in rechargeable battery covered by European Directive 2013/56/EU which cannot be disposed of with normal household waste. We strongly advise you to take your product to an official collection point or a Philips service

centre to have a professional remove the rechargeable battery. Inform yourself about the local separate collection system for electrical and electronic products and rechargeable batteries. Follow local rules and never dispose of the product and rechargeable batteries with normal household waste. Correct disposal of old products and rechargeable batteries helps prevent negative consequences for the environment and human health.

### ! Caution

- Removal of the built-in battery invalidates the warranty and may destroy the product.

Always bring your product to a professional to remove the built-in battery.



### Environmental information

All unnecessary packaging has been omitted. We have tried to make the packaging easy to separate into three materials: cardboard (box), polystyrene foam (buffer) and polyethylene (bags, protective foam sheet.) Your system consists of materials which can be recycled and reused if disassembled by a specialized company. Please observe the local regulations regarding the disposal of packaging materials, exhausted batteries and old equipment.

---

## Trademark notice



The Bluetooth® word mark and logos are registered trademarks owned by Bluetooth SIG, Inc. and any use of such marks by Gibson is under license. Other trademarks and trade names are those of their respective owners.





Copyright © 2015 Gibson Innovations Limited. Revised Edition © 2017  
This product has been manufactured by, and is sold under the responsibility of Gibson  
Innovations Ltd., and Gibson Innovations Ltd. is the warrantor in relation to this product.  
Philips and the Philips Shield Emblem are registered trademarks of Koninklijke Philips N.V.  
and are used under license.

BT25\_BT50\_00\_UM\_V4.0

